

---

# Script Tool Box

---

**About Script Tool Box:** Script Tool box is an application designed to aid in the writing of AppleScript™ by giving scripters some features not present in the current Script Editor. By using Script Tool Box along with Script Editor you can greatly enhance your productivity in writing AppleScripts.

**Features:**

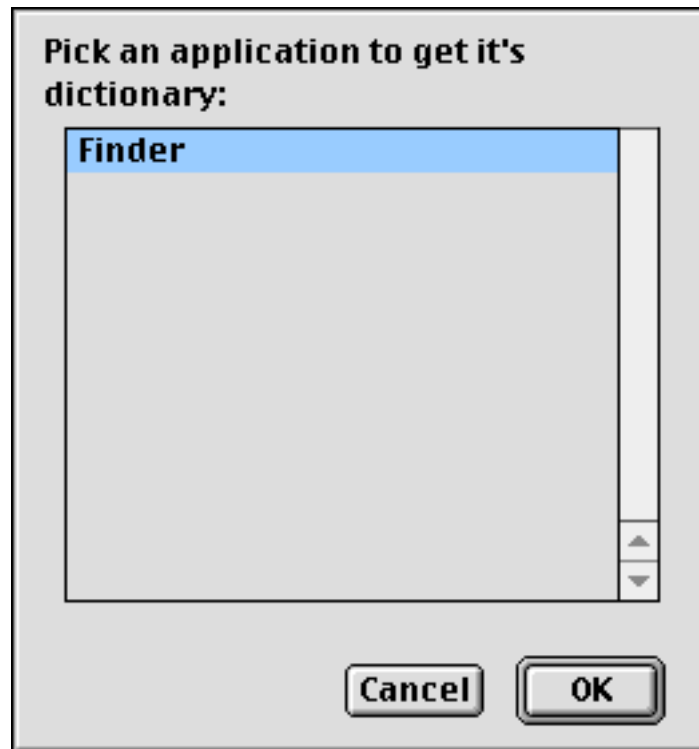
1. Get Dictionary, allows you to have easy access to compiled a list of scriptable applications you frequently need the AppleScript™ dictionaries to. And will open the selected applications dictionary.
2. File Path / Folder Path, will allow you to get the file path or folder path to a selected item and will past the file path or folder path onto the clipboard. This makes it ready to past into your AppleScript™, for scripts dealing with file and folder manipulation.
3. Open clipboard, allows you to have one click access to the finder's clipboard.
4. Ascii Table, opens a window with an ascii table so you can quickly see what ascii number relates to which character and the characters name.
5. Run Script, allows you to have a list of compiled scripts that can be run from within Script Tool Box.

**System Requirements:**

1. Mac OS 8.6 or higher.
2. PowerPC or higher.
3. 3MB of free ram.

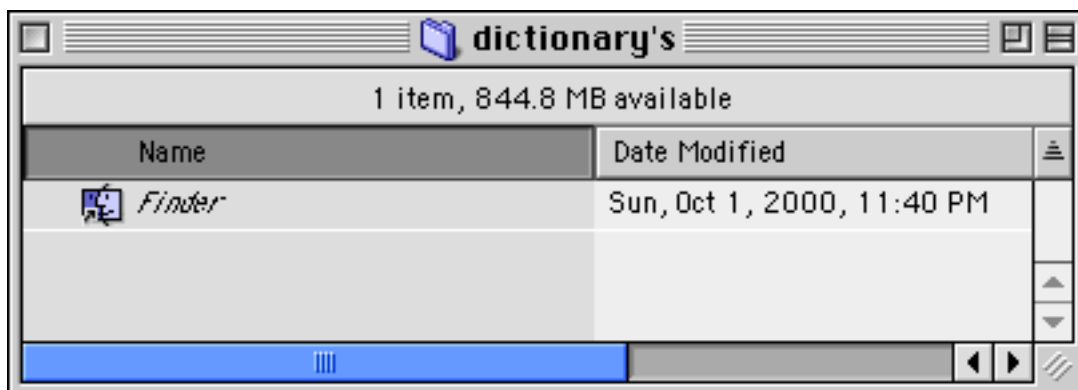
### How to use Script Tool Box:

4. The Dictionary button will open a dialog box that lets you select from your list of applications which one you would like to get the dictionary for.

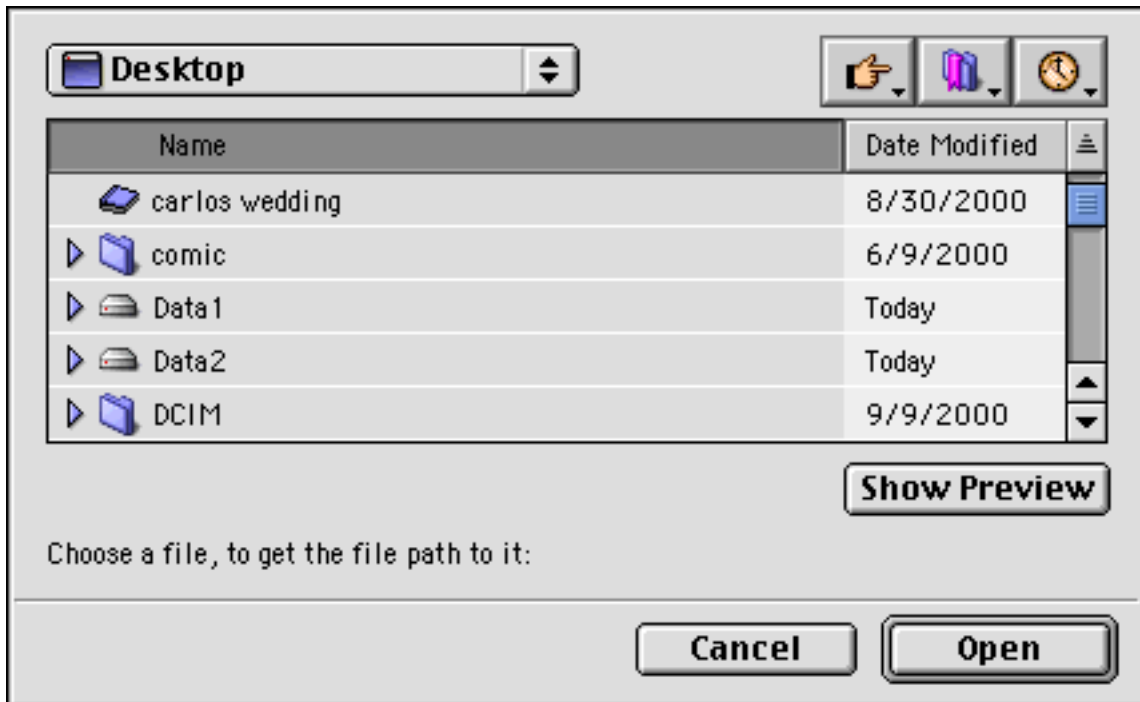


5. The Dictionary folder button will allow you to customize the list of applications that the Get Dictionary button will display. When you click on the Dictionary folder button it will open the folder. Inside this folder you may place aliases to as many applications as you want, the more aliases you put in the longer the list becomes.

**Note:** By default there will be an alias to the Finder the first time you launch the application.

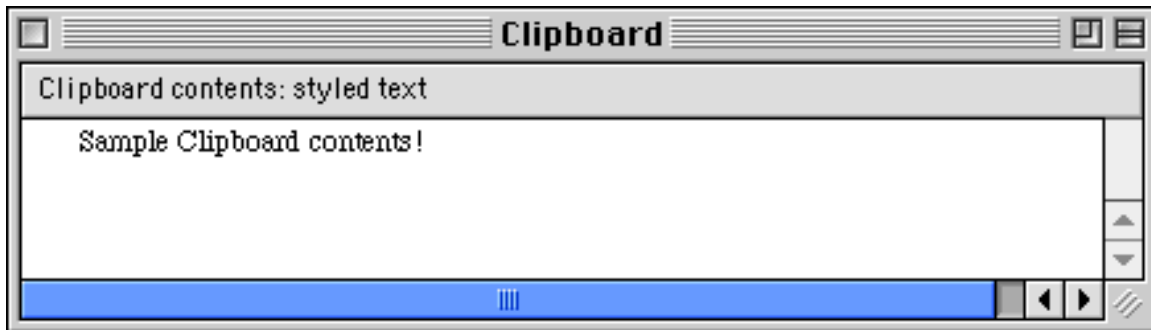


6. The File Path to button will open a dialog box that will allow you to navigate through your hard drive and choose a file. Once you have chosen the file, the file path will be on the clipboard and ready to paste into your script. **Note:** An example file path would be; **MacintoshHD:System Folder:Finder**



7. The Folder Path to button will open a similar dialog box that will allow you to navigate through your hard drive and choose a folder. Once you have chosen the folder, the folder path will be on the clipboard and ready to paste into your script. **Note:** An example folder path would be; **MacintoshHD:System Folder:Extensions:**

8. The Show Clipboard button will open a window showing the clipboard contents.



9. The Show Ascii Chart button will open a window with a chart showing all of the ascii numbers with their corresponding names and characters. **Note: You can select text in the chart to copy and paste it into your script as you see fit.**

A screenshot of a window titled "ASCII CHART". The window contains a table with three columns: "ASCII", "CHARACTER", and "NAME". The table lists ASCII values from 0 to 15, their corresponding characters (NUL, SOH, STX, ETX, EOT, ENQ, ACK, BEL, BS, HT, LF, VT, FF, CR, SO, SI), and their names (Null, Start of Heading, Start of Text, End of Text, End of Transmission, Enquiry, Acknowledge, Bell, Backspace, Horizontal Tab, Line Feed, Vertical Tab, Form Feed, Carriage Return, Shift Out, Shift In). The table has a vertical scrollbar on the right side.

ASCII	CHARACTER	NAME
0	NUL	Null
1	SOH	Start of Heading
2	STX	Start of Text
3	ETX	End of Text
4	EOT	End of Transmission
5	ENQ	Enquiry
6	ACK	Acknowledge
7	BEL	Bell
8	BS	Backspace
9	HT	Horizontal Tab
10	LF	Line Feed
11	VT	Vertical Tab
12	FF	Form Feed
13	CR	Carriage Return
14	SO	Shift Out
15	SI	Shift In

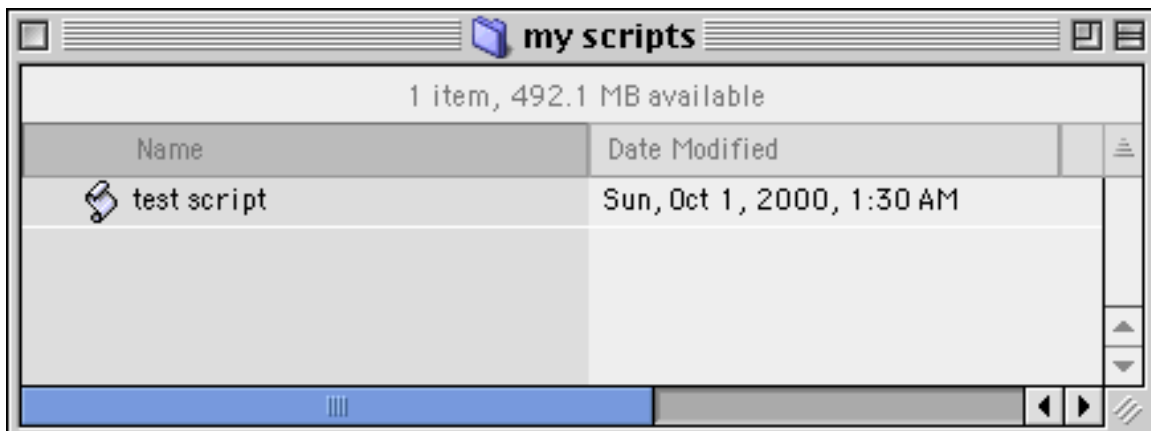
10. The Run Script button will run a compiled script from the list at the bottom of the Script Tool Box window.

Once you have selected which script you want from the list box, you only have to click the Run Script button.

Note if you do not select a script from the list box before you click the Run Script button, you will be presented with a dialog box asking you to select a script from the list box.



11. The Script folder button will open the folder containing the scripts that are listed in the list box at the bottom of the Script Tool Box window. Inside this folder is where you would place your compiled scripts. Note: Once you place your scripts in this folder you have to quit and re-launch the Script Tool Box application in order for them to show up in the list box.



**Ordering/Registraton:**

You can order the full registered version of Script Tool Box either by check, money order or credit card with the included register application. Simply fill out the form in the register application, print it out and mail it in. Or you can purchase it online from my secure online order page at <http://www.power-scripts.com>

©2000 by Power-Scripts, Charles Booker [scriptmaster@power-scripts.com](mailto:scriptmaster@power-scripts.com)