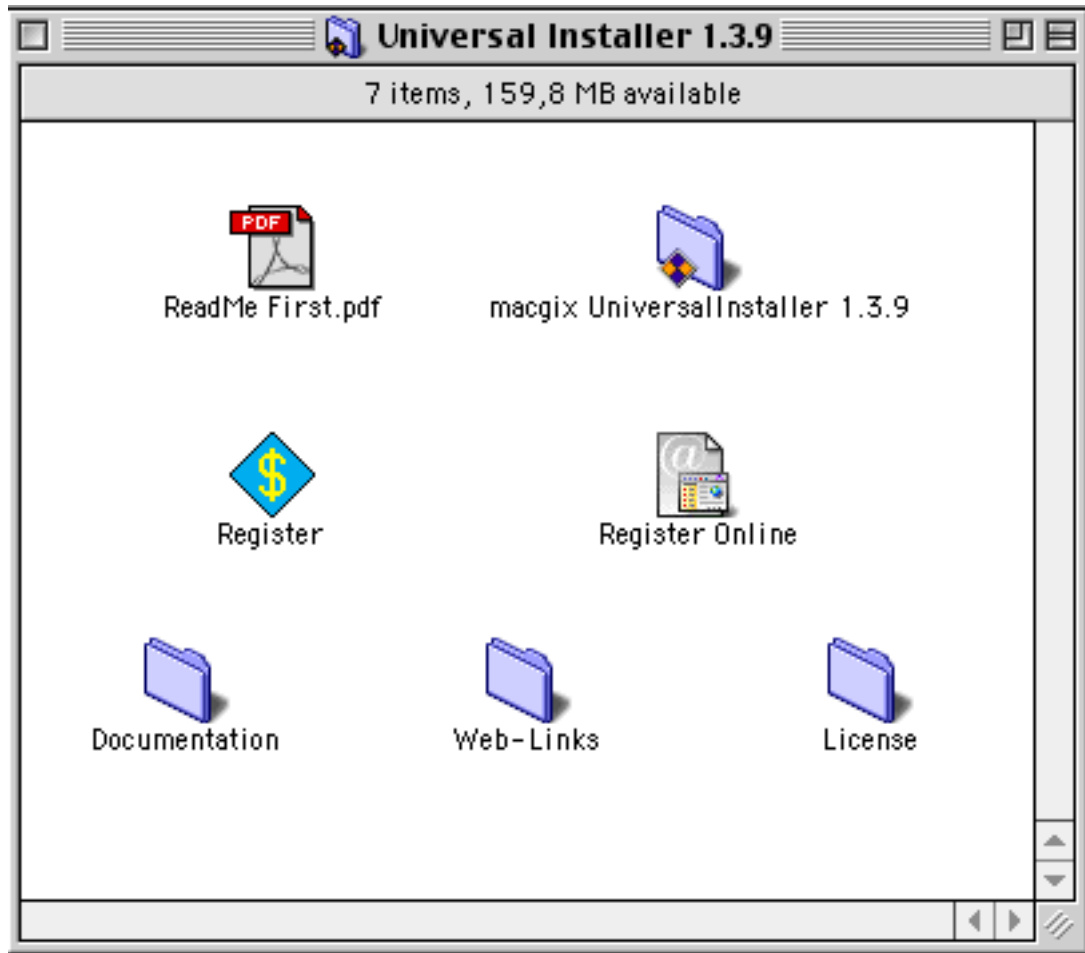


macgix Universal Installer 1.3.9 Evaluation Documentation:

Copyright © 1997 - 2000 macgix Thomas Kuehner



If you open the extracted folder you will see this objects:

1. **ReadMe First.pdf** - Description and short overview of the installer application.
2. **macgix UniversalInstaller 1.3.9** - The root folder for your own installation
3. **Register** - The well known Register application.
You may register via kagi.com using this or:
4. **Register Online** - using this link and your credit card.
5. **Documentation** - Futher documentation (like this file) of the installer.
6. **Web-Links** - Bookmarks to the macgix ftp-/http-server and one for sending mail directly to me unsing your email-client.

Follow opening „macgix Universal Installer 1.3.9“. This is your workspace for creating own installation later.

You find the folder „Put Your installation in here!“. Please go on opening that folder too!

This is what it contains. You should later replace the SimpleText files with your own ReadMe and License. You should rename the installer application into something that points to your product too, when you build your own distribution.



I recommend to run the Evaluation copy as it is first to learn how the installer works and what it will do for you! So check the „parts“ folder for the items, that will be installed when running the Evaluation copy.

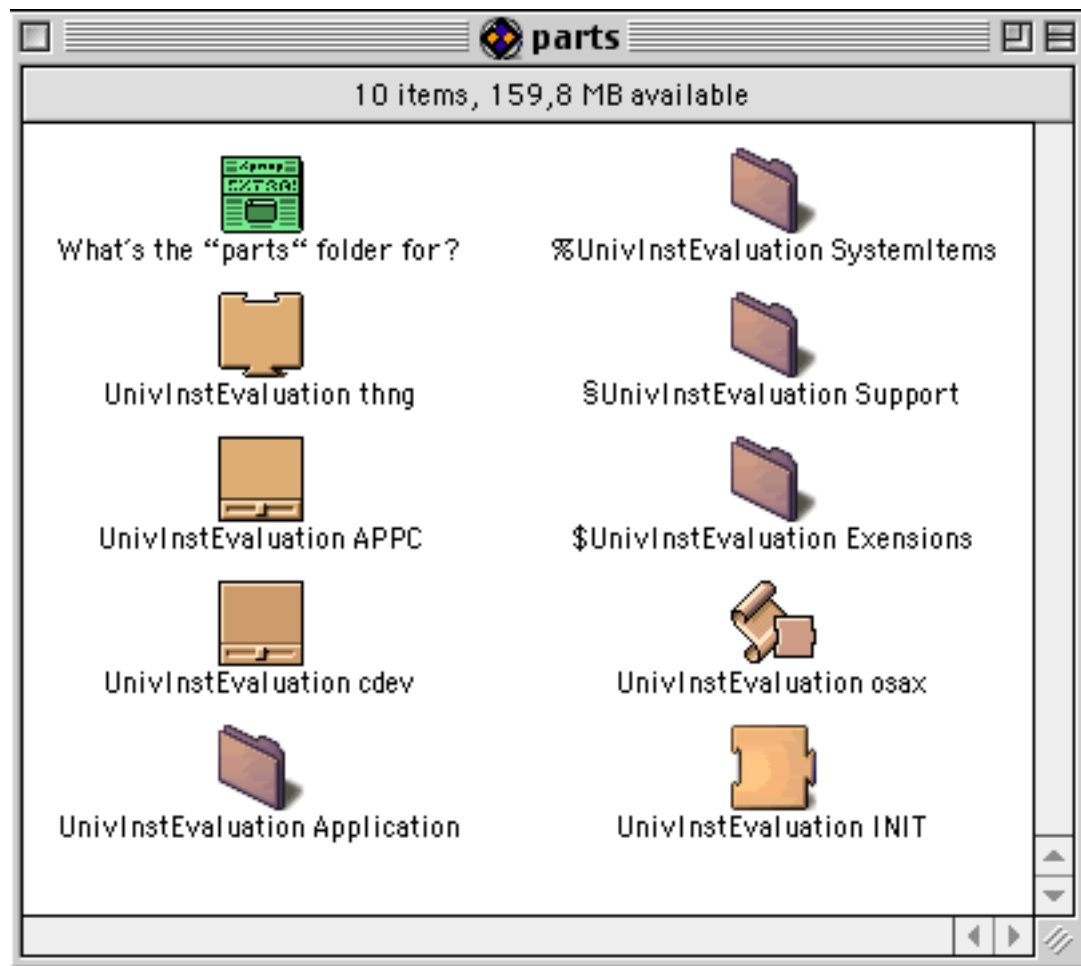
The items in the „parts“ folder are „fakes“. That means, the extensions and control panels are empty files with a correct creator type.

This means, that they do no harm to your system if you forget to remove them after the Evaluation copy of this installer has run.

If you like the files more compressed then you should create an compressed disk-image of your installation folder. This reduces the size by fairly the half, but guarantees a fast decompression when installing.

It's very Apple-like to distribute software in installers using disk-images.

There is even the possibility to create self-mounting images using the „Make SMI 1.1“ application (Be aware of a bug in Make SMI 1.1! You will have to set the bundle bit manually using FileBuddy™ or another utility like it, because Make SMI 1.1 did forget it!)



Here is the content of the „parts“ folder as it has been when the archive was extracted for the first time. It looks like this and contains four folders and six files. You will find the files later when the installer has executed in their proper destinations.

NOW LET'S GO!



Start the installer „Run me for evaluation“ by double-clicking its icon. You will see this splash screen that may be closed by hitting the „ENTER“-key.

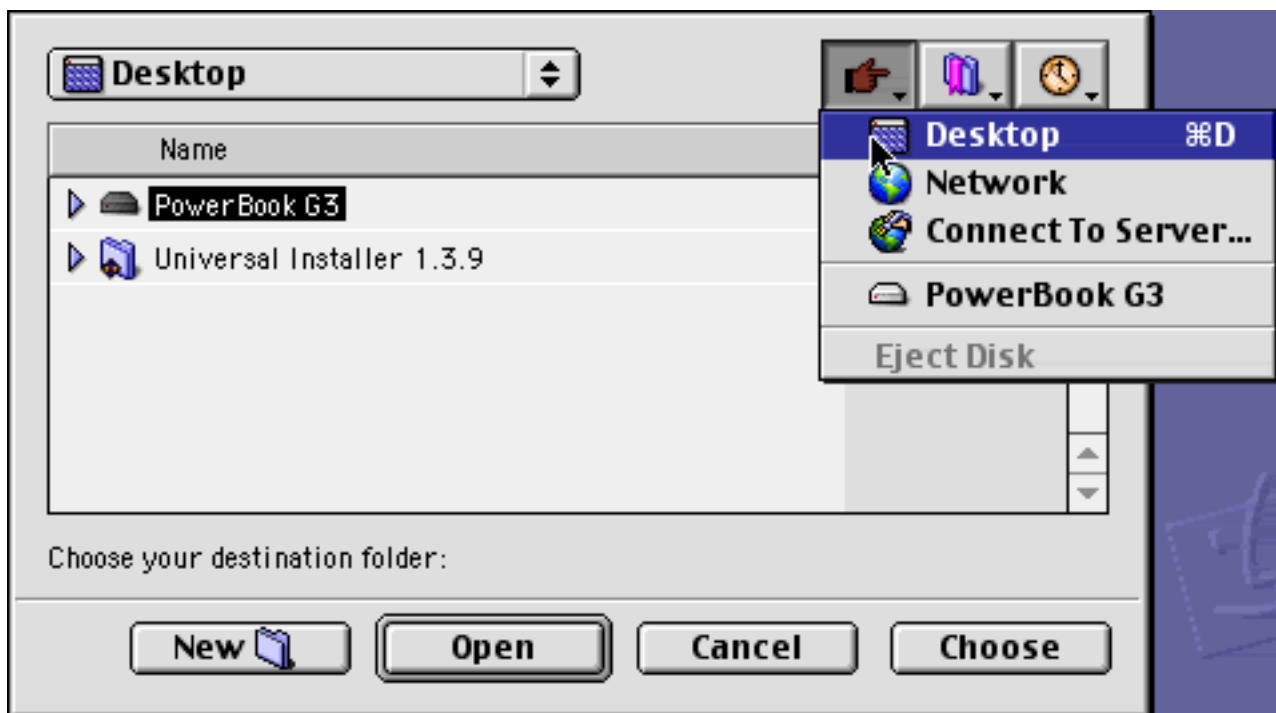
A „nasty“ reminder appears (EVALUATION NOTE):



This is your last chance to „Cancel“ the installation.
This screen may be a different if the installer is registered or may be disabled when building the installer with a registered copy.

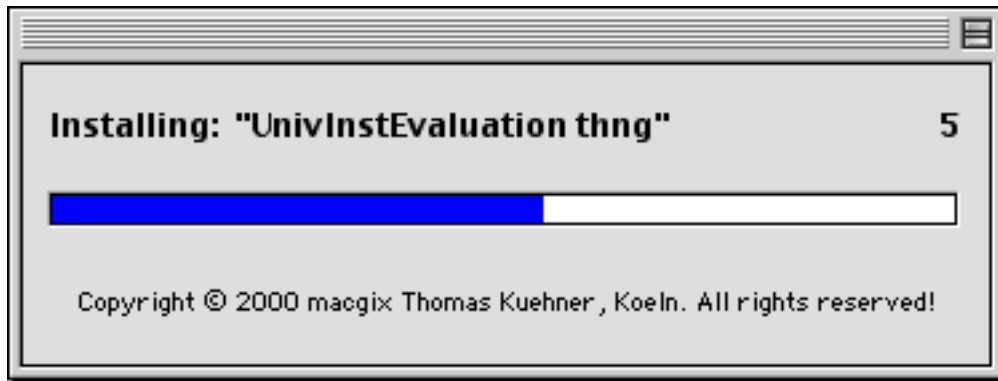


If a simple folder (without a prefix) is found in the „parts“ folder, the user will be prompted to choose a folder as the destination for the simple folder.



In this example the folder should be installed on the desktop.
So you may choose „Desktop“ from the „hand“-menu while holding the „Alt“-key pressed when releasing the mouse-button.

Now the installation runs!



When installation is running, information about the files and folders that are currently processed is shown in this status window.

Installation has succesfully finished:



If system items have been installed, the user is recommended to restart his/her machine before using the new installed files.

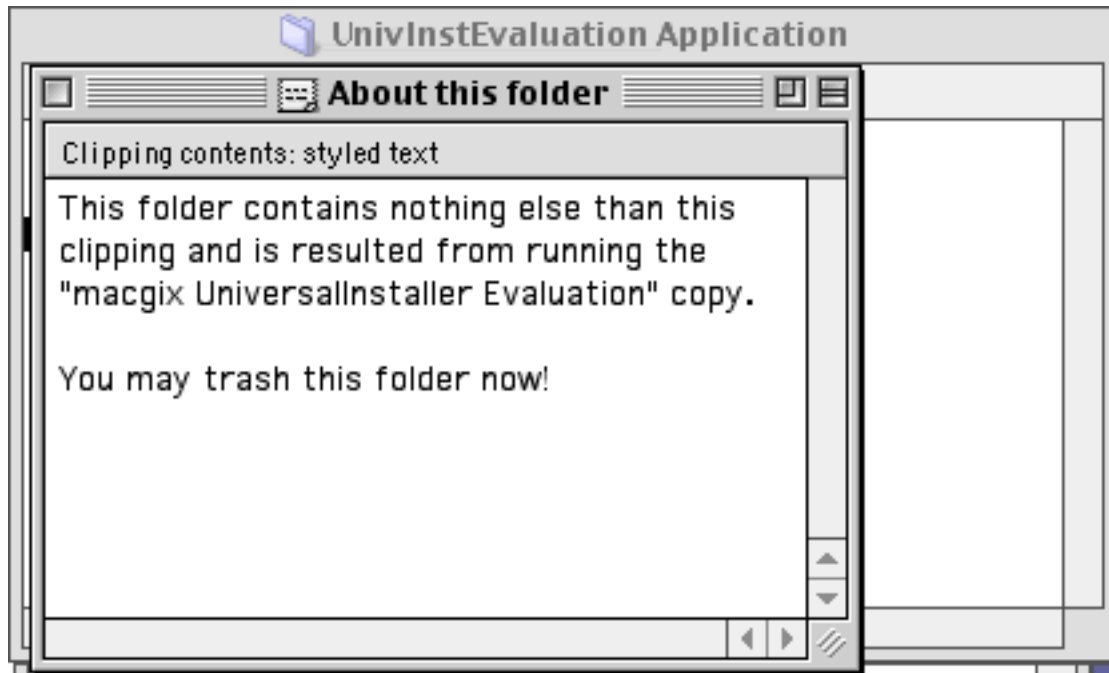
If no system items have been installed only the „Quit“ button will be displayed and the message is different from the one shown above.

After installation:

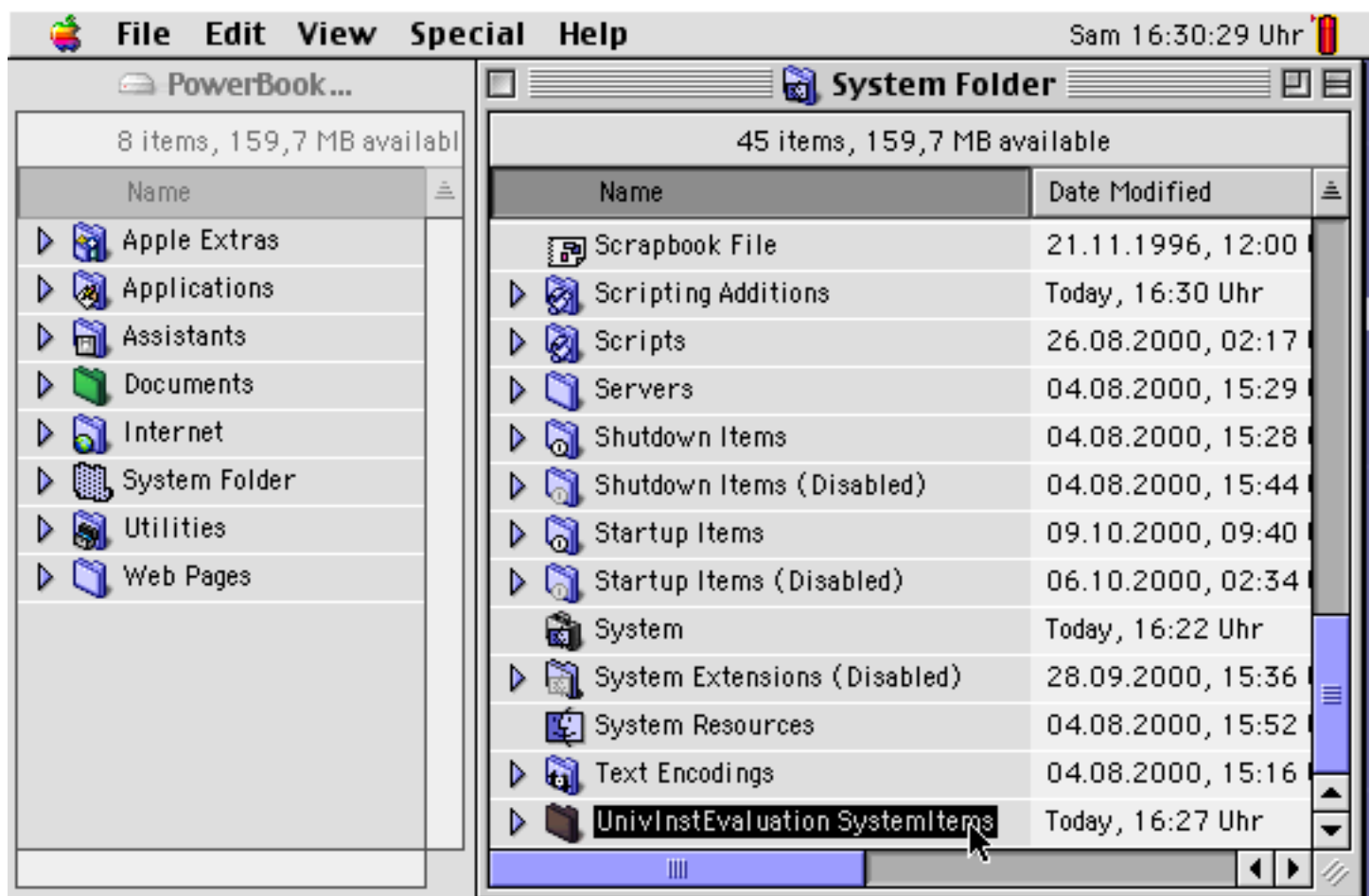


After a succesful installation you find the new application folder on your desktop and its window opened in the upper left corner of your desktop.

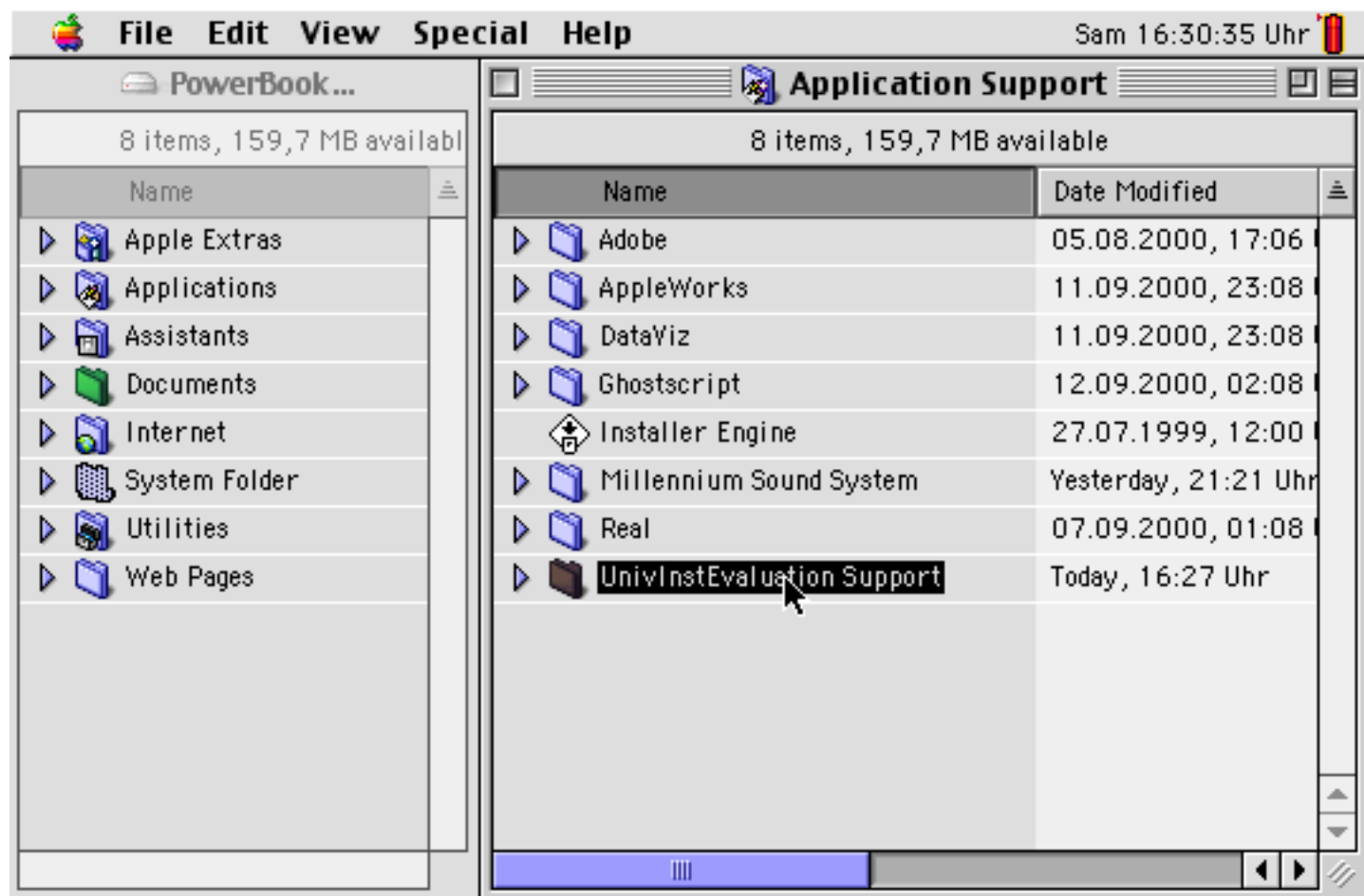
FURTHER EVALUATION INSTALLATION RESULTS



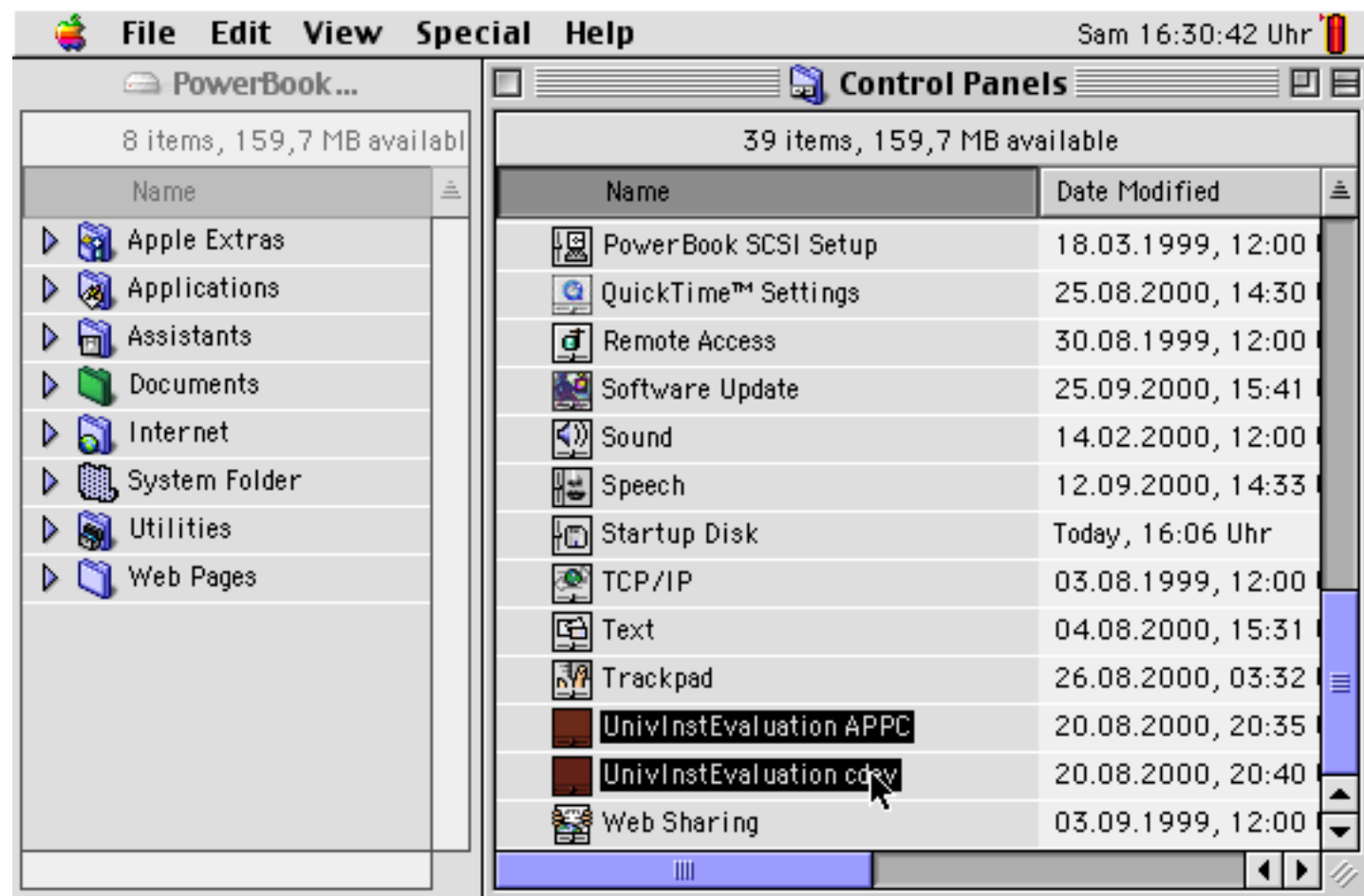
The folder (and all other installed folders) contents a simple text-clipping telling the user (you) that you may trash `em.



Now you will see where all other items have been placed and you now want to trash them too. The first one is in the System folder of the active system the installer has run from.



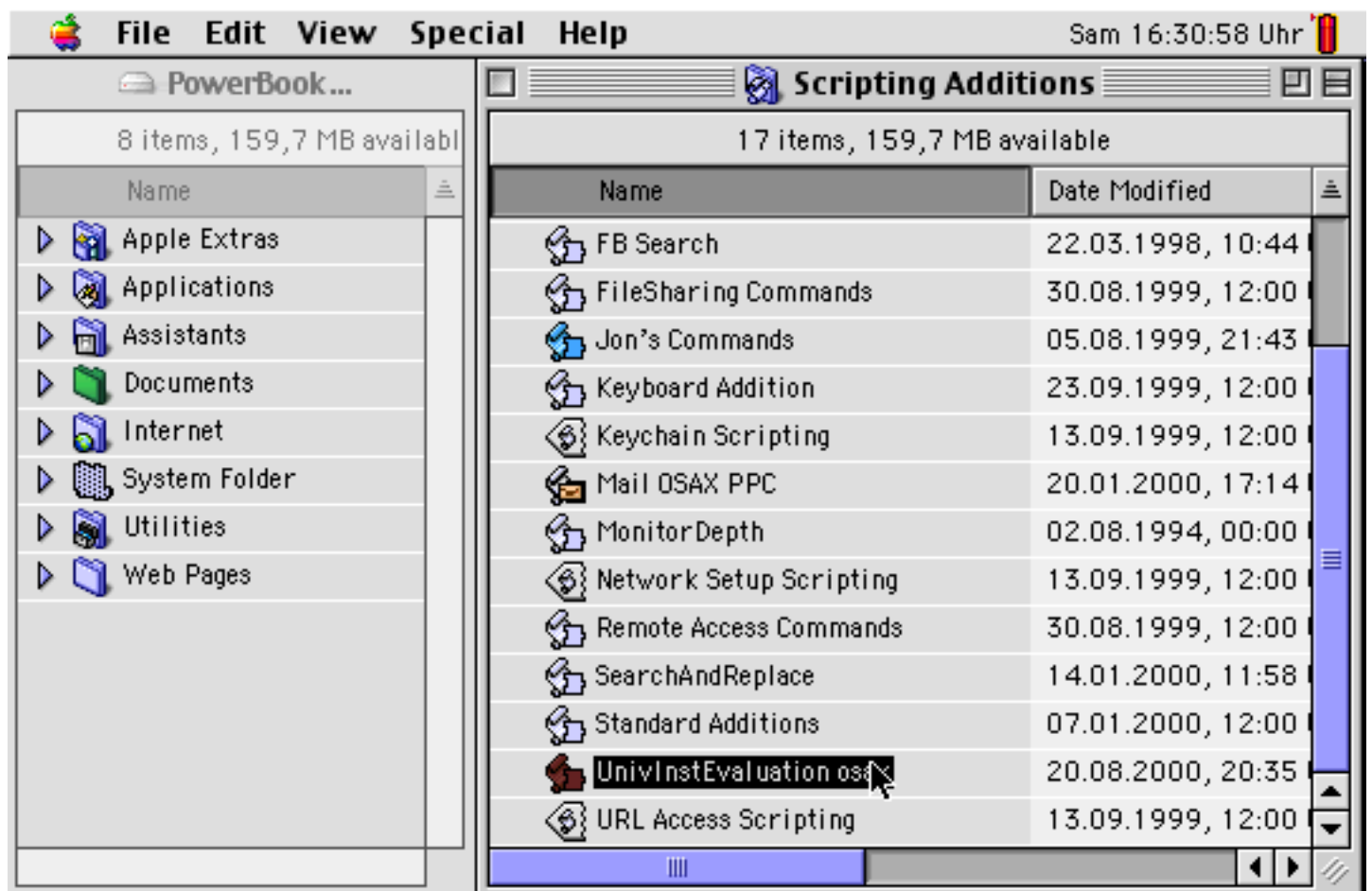
Then look into „Application Support“ folder...



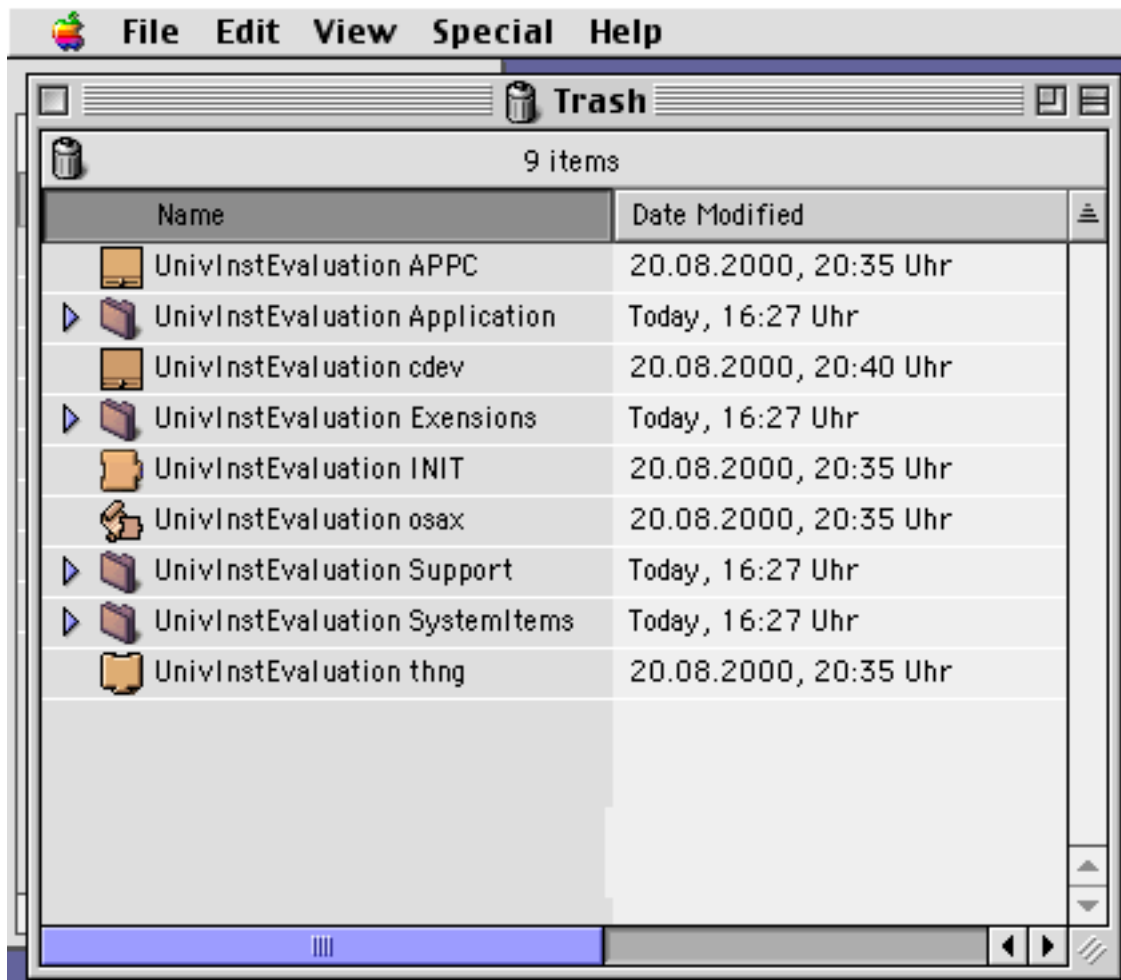
Then into your „Control Panels“ folder...



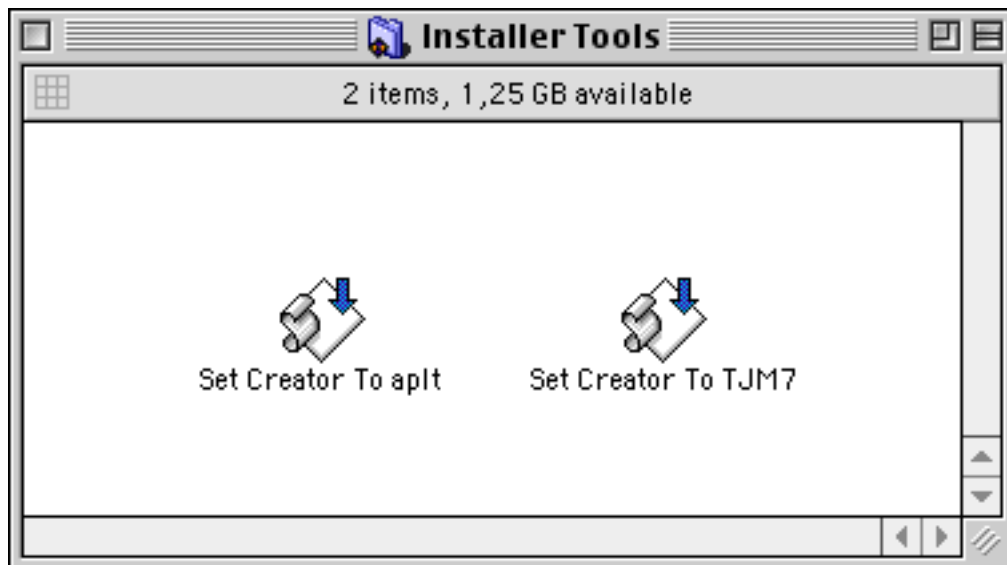
Then into your „Extensions“ folder...



finally into your „Scripting Additions“ folder!



If you trashed all the items shown above, your trash should look like this.
You may empty the trash now without having your system affected :-).



As mentioned in the ReadMe file, you may have to change creator types of installers for running on systems prior to Mac OS 8.0. Simply drag one ore more installer applications onto the desired application and change the creator type easily.