

# **Microspot PrintmiX**

## **User Guide**



Microspot PrintmiX™ User Guide

Copyright © 2001 by Microspot Limited. All Rights Reserved.

Microspot, Microspot PrintmiX, Microspot PhotoXtra, Microspot PhotoFix and Microspot PhotoXtraPak are trademarks of Microspot Limited.

Macintosh is a registered trademark and Mac is a trademark of Apple Computer Inc.

Adobe and Acrobat are trademarks of Adobe Systems Inc.

All other products mentioned are trademarked by the appropriate companies.

Application Designed and Written by:

Matt Gough, Robin Landsbert & Douglas Norton

Manual Written by:

Hazel Parratt

Microspot Ltd. (Worldwide Headquarters)

Concorde House

10-12 London Road

Maidstone

Kent ME16 8QA

UK

Phone: +44 (0)1622 687771

FAX: +44 (0)1622 690801

email: [sales@microspot.co.uk](mailto:sales@microspot.co.uk)

Web page: [www.microspot.co.uk](http://www.microspot.co.uk)

Macro Enter Corp. (Distribution for the Americas, Australia and New Zealand)

1756 Costa del Sol

Boca Raton FL 3343

USA

Phone: +1 (561) 395-9996

FAX: +1 (561) 395-9941

email: [sales@macroenter.com](mailto:sales@macroenter.com)

Web page: [www.macroenter.com](http://www.macroenter.com)

Reference: HP-PMX 1.0-8/11/01

# Table Of Contents

<b>Introduction</b>	<b>1</b>
About Microspot PrintmiX	1
Requirements	1
Mac OS X version	1
Classic version	1
Installing the Application	2
Launching and Enabling the Application	2
Getting Help	4
The Help Palette	4
The Microspot PrintmiX Manual	5
Registration	5
Upgrades	6
Technical Support	6
 <b>Using Microspot PrintmiX</b>	 <b>8</b>
Getting Started	8
Choosing the Layout	9
Placing Images in a Layout	12
Adding Images	12
Replacing Images	15
Deleting Images	15
Changing the Display of Images	16
Zooming In and Out	16
Moving the Image in the Layout	17
Using Frames	18
Adding Frames	19
Replacing Frames	20
Deleting Frames	21
Printing	21
Quitting Microspot PrintmiX	22

<b>Menus</b>	<b>23</b>
PrintmiX Menu	23
File Menu	24
Edit Menu	25
Window Menu	26
Help Menu	27

# Introduction

---

---

## About Microspot PrintmiX

---

---

Microspot PrintmiX makes it easy to arrange and print out multiple images on one sheet of paper.

PrintmiX provides a selection of layouts and frames. After choosing a layout, simply drag and drop images into the PrintmiX template directly from a PhotoXtra or iPhoto album or from the Finder, or place an image into the template using the Insert Image tool. Reduce or enlarge the images within PrintmiX, and add frames around them if desired. When you are happy with your layout, send the page to print.

---

---

## Requirements

---

---

### Mac OS X version

- Macintosh with G4 processor
- CD Drive
- Mac OS X
- 5MB free RAM

### Classic version

- Macintosh 68020 or greater.
- CD Drive
- Mac OS 7.1 or later
- 5MB free RAM
- QuickTime 3.0
- Drag & Drop manager.

---

---

## Installing the Application.

---

---

### To install Microspot PrintmiX:

1. Double-click the PrintmiX Installer icon on the PrintmiX CD.
2. Follow the instructions that display.

The Microspot PrintmiX folder is installed at the location specified. An alias to the PrintmiX application is placed on the desktop.

---

---

## Launching and Enabling the Application

---

---

### To launch the PrintmiX application:

- Double-click the PrintmiX icon within the Microspot PrintmiX folder.
- or
- Click the PrintmiX alias on the desktop.

The application opens.

The first time you launch PrintmiX you are asked to enter a name and valid serial number to enable the software.

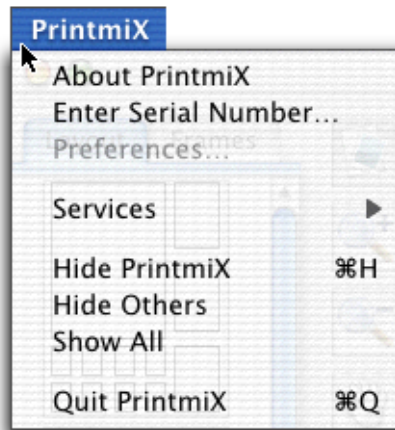
## To enable Microspot PrintmiX:

1. Enter a name and valid serial number (the organization name is optional) in the dialog that displays.

The serial number must be valid for the version you are using. This is supplied with the PrintmiX software when purchased.

2. The OK button is available only when you type in a valid serial number.
- Click OK to open the application.
  - Click Cancel and the application runs in demo mode. Images will print with the word 'Demo' across them.

When running PrintmiX in demo mode, select Enter Serial Number from the PrintmiX menu to enter a serial number and enable the application.



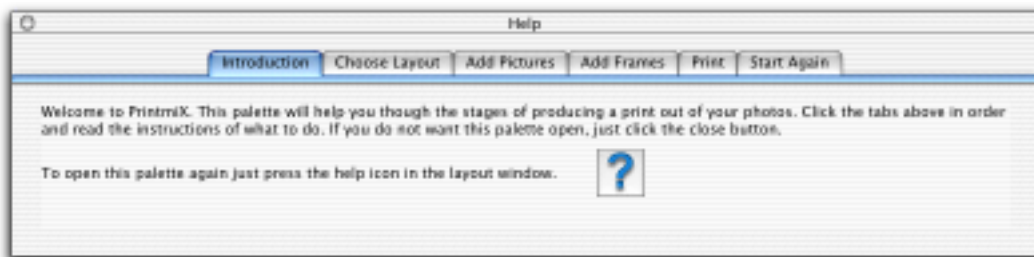
---

## Getting Help

---

### The Help Palette

The first time PrintmiX is launched, the Help palette displays automatically.



- Click on the various tabs to display information about that subject.
- Close the palette by clicking on the Close box in the top left corner of the palette.



- Display the palette again at any time by clicking on the Help tool in the PrintmiX tool area.



## **The Microspot PrintmiX Manual**

The PrintmiX manual is included on the Microspot PrintmiX CD in pdf format. An installer for Adobe™ Acrobat™ Reader is also included. The manual is installed on your hard drive during the installation process.

Once Acrobat Reader is installed, select PrintmiX Manual from the Help menu and Acrobat Reader will launch and open the manual. You can then navigate through and read the manual on screen, or print sections for your reference.

## **Registration**

Register Microspot PrintmiX via the internet, or by filling in and returning the registration card included with the product.

### **To register via the internet:**

1. Launch Microspot PrintmiX.
2. Select Registration Information from the Help menu.

The Registration Information dialog displays:



3. Click Connect to go to the Microspot product registration web page.
4. Follow the registration instructions.

Once you have registered the product, Microspot can send you information about upgrades and new products.

## Upgrades

To obtain any available information about upgrades from the Microspot web site, select Upgrade Information from the Help menu in PrintmiX.

## Technical Support

You must register your product to be entitled to receive technical support.

**For technical support in North America, South America, Australia and New Zealand, please contact:**

Macro Enter Corp.  
1756 Costa del Sol  
Boca Raton, FL 33432  
USA

Technical Support: (561) 395-9704; International: + 1-561-395+9704  
FAX: (561) 395-9941; International: + 1-561-395-9941

Email: [support@macroenter.com](mailto:support@macroenter.com)  
Web Pages: [www.macroenter.com](http://www.macroenter.com)

**In Europe and other parts of the world, please contact:**

Microspot Limited (Worldwide Headquarters)  
Concorde House  
10-12 London Road  
Maidstone  
Kent  
ME16 8QA  
England

Phone: 01622-687771; International: + 44-1622-687771  
FAX: 01622-690801; International: + 44-1622-690801

Email: [support@microspot.co.uk](mailto:support@microspot.co.uk)  
Web Pages: [www.microspot.co.uk](http://www.microspot.co.uk)

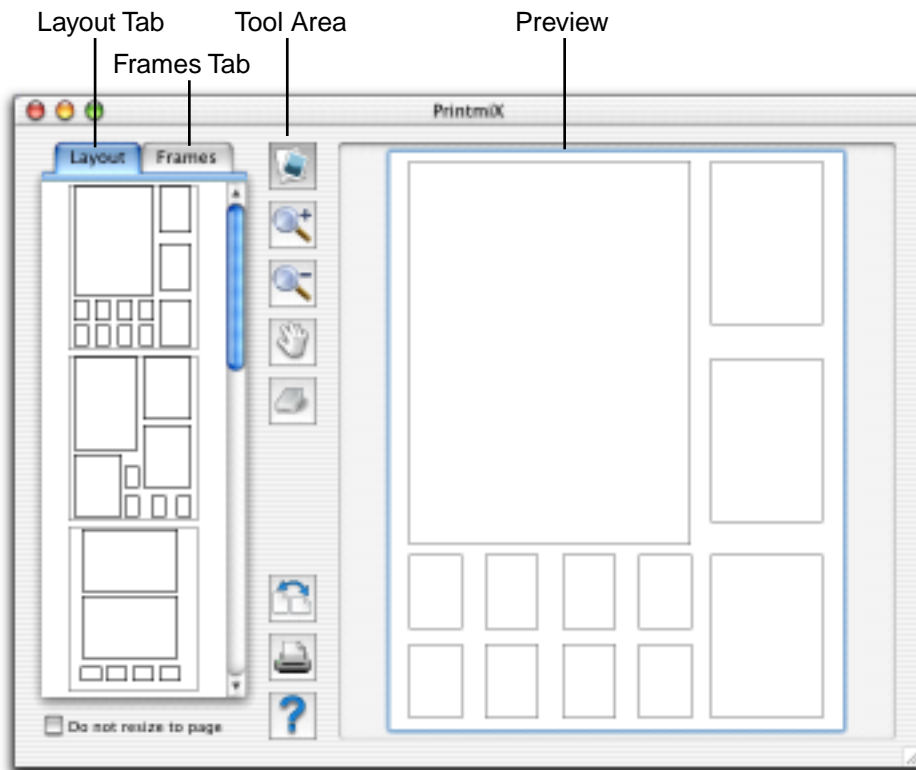
# Using Microspot PrintmiX

---

## Getting Started

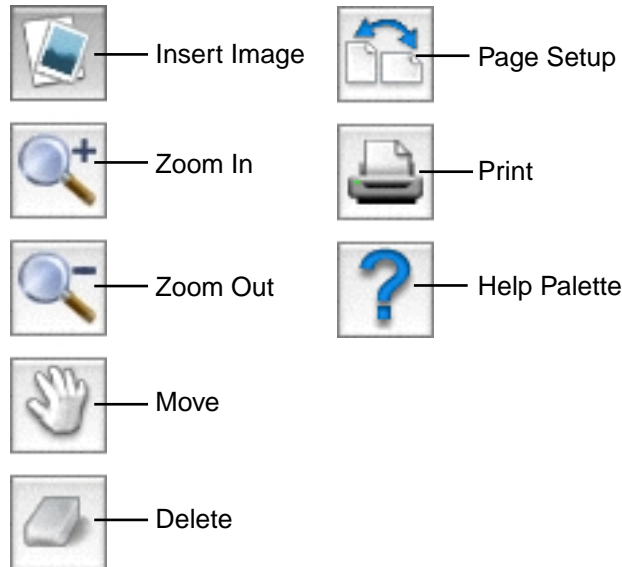
---

When PrintmiX is launched, a layout window like the one shown below displays automatically:



- The preview area displays a preview of how your pictures will be printed.
- The Layout tab holds a selection of different layouts used to organize your pictures on a page.
- The Frames tab contains a selection of different frames that can be applied around your pictures on the layout.

- The top part of the tool area contains tools used to insert and manipulate images. At the bottom of the tool area are three further buttons used to access the Page Setup and Print dialogs, and to display the Help palette.



Layouts cannot be saved, but multiple PrintmiX windows can be open at the same time (memory permitting). To open a new layout at any time, select New from the File menu.

---

---

## Choosing the Layout

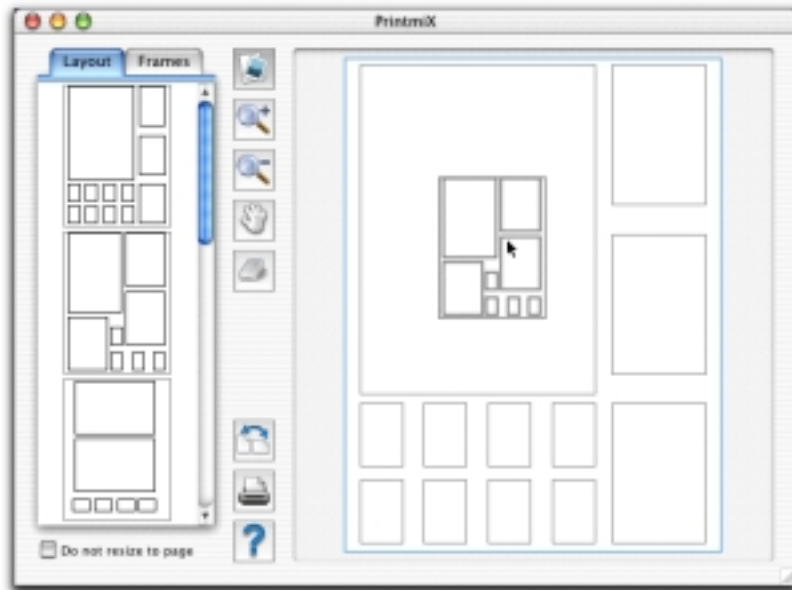
---

---

You choose a layout from the selection available in the Layout tab. Each layout contains one or more 'panes' into which you can insert images. The layout chosen determines the number of images printed on a page, the size of those images, and the position of the images on the page.

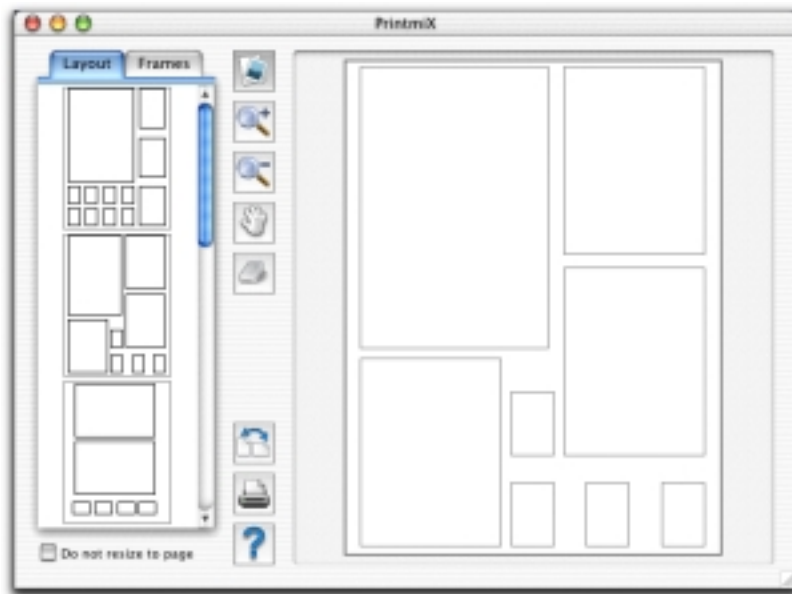
### To choose a layout:

1. Click the Layout tab to select it, then use the scroll bar to view the layouts available.
2. When you have decided the layout to use, position the cursor over that layout, press and hold down the mouse button and move the cursor over the preview area.



3. Release the mouse button.

The layout selected is applied to the page in the preview area.

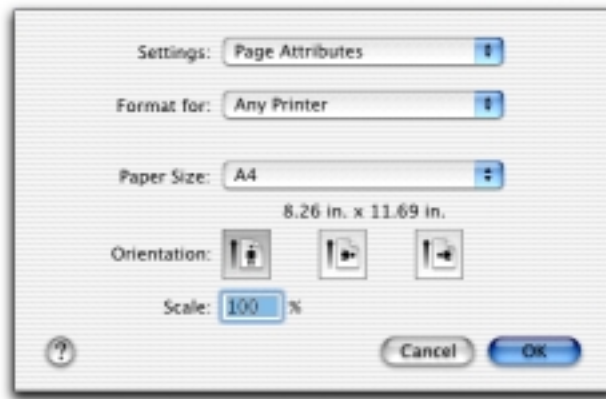


If the images you want to print via PrintmiX are wider than they are tall, you may want to change the orientation of the page. This is done via the Page Setup dialog.

4. To display the Page Setup dialog, select Page Setup from the File menu or click on the Page Setup icon in the PrintmiX window.

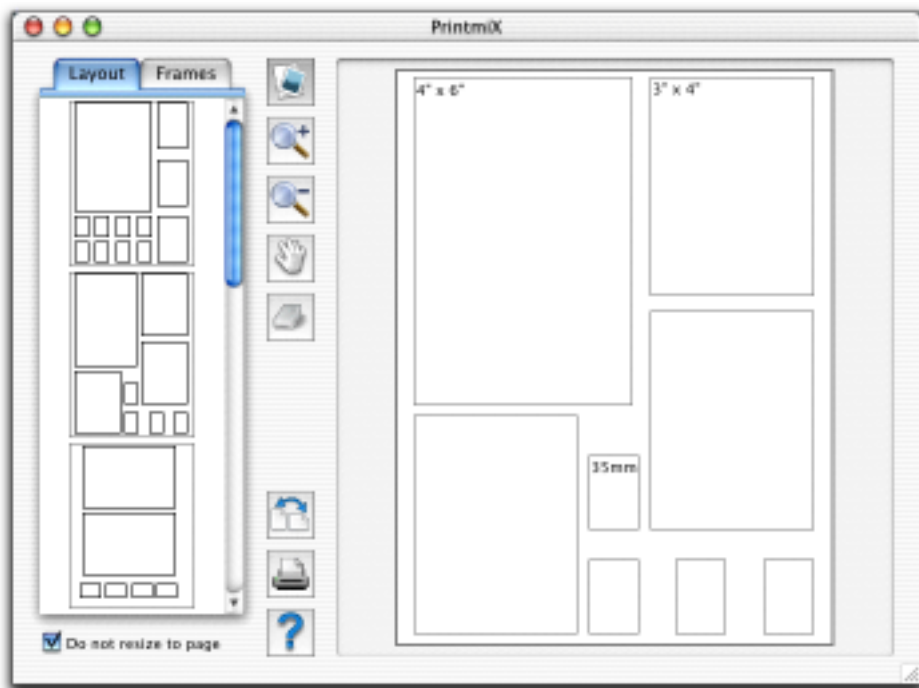


The Page Setup dialog displays.



5. Choose portrait or landscape orientation according to your requirements.
6. Click OK to close the dialog.

If you wish to print images of a set size, click the ‘Do not resize to page’ checkbox at the bottom left of the PrintmiX window.



The size of each pane displays on the preview.

If this box is not checked, the layout is scaled to fill the page.

---

## Placing Images in a Layout

---

### Adding Images

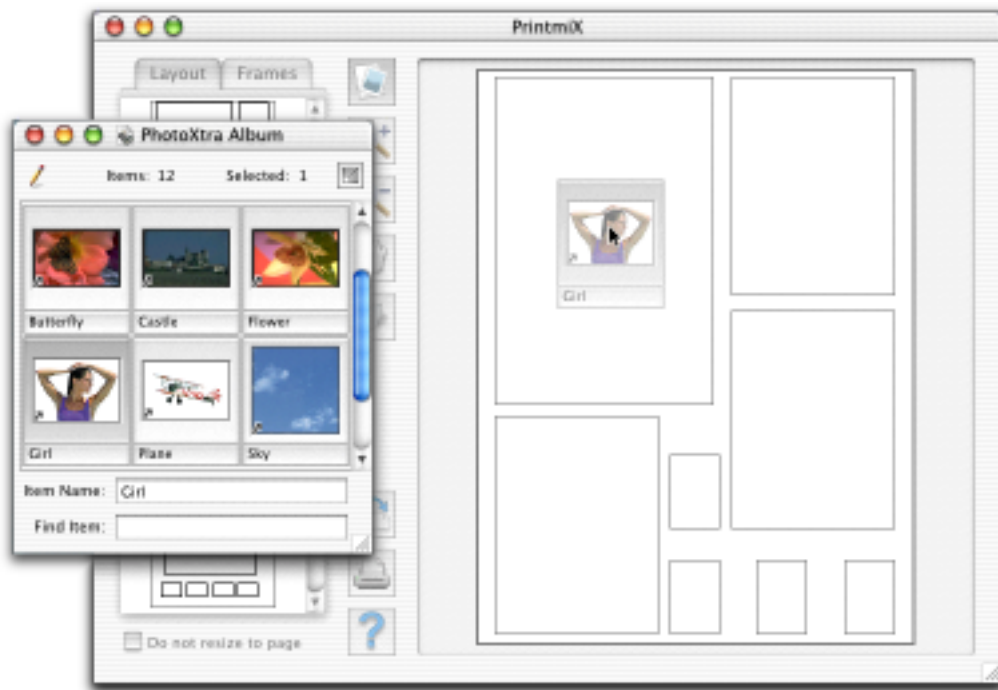
Inserting pictures into the PrintmiX layout is very easy. Pictures can be dropped in directly from a PhotoXtra or iPhoto album or the Finder, or inserted using the Insert Image tool.



*NOTE: It is important that the images placed in the PrintmiX layout are of a resolution appropriate to the printer to be used to print the images, and to the required size of the printed images. If very large image files are placed in the PrintmiX layout, it requires a large amount of memory to perform any actions and may be slow to use.*

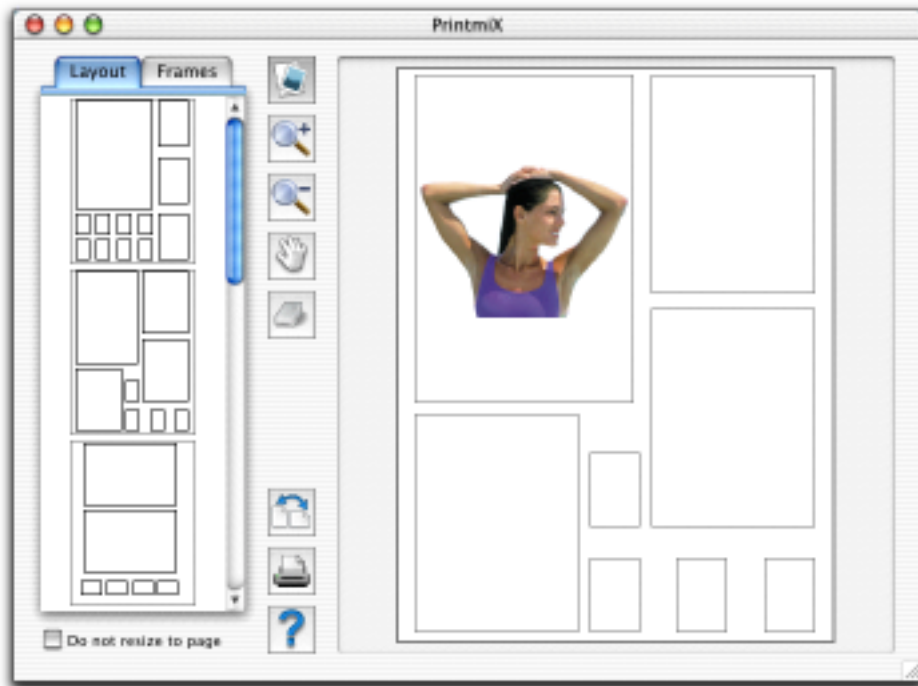
**To place an image from a PhotoXtra or iPhoto album into the layout:**

1. Open Microspot PhotoXtra or iPhoto. (*See the PhotoXtra manual for more information.*)
2. Open the PhotoXtra or iPhoto album that contains the image to be placed in the PrintmiX layout.
3. Position the album and the PrintmiX window on screen so that both can be seen.
4. Choose an image in the album to place on the PrintmiX layout.
5. Click the image in the album to select it and, holding down the mouse button, drag the image over the layout pane that you want to place it in.



6. Release the mouse button.

The chosen image is displayed in the appropriate pane of the PrintmiX layout.



7. Repeat the process to insert images in the other panes of the layout.

*NOTE: To fill up all empty panes with the same picture, hold down the Command key when releasing the mouse button to drop the image into the layout.*

**To place an image into the layout using the Insert Image tool:**

1. Select the Insert Image tool in the PrintmiX tool area.



2. Move the cursor over the layout.

The cursor changes to the Insert Image cursor.



3. Click a pane in the layout preview.

A standard open dialog displays.

4. Locate and select the image you wish to insert in the pane and click Open.

The image selected appears in the appropriate pane of the layout.

5. Repeat the process to insert images in the other panes of the layout.

#### **To place an image from the Finder into the layout:**

1. In the Finder, locate the image to place in the layout.
2. Drag the image icon from the Finder and drop it into the desired pane.
3. Repeat the process to insert images in the other panes of the layout.

*NOTE: To fill up all the empty panes with the same picture, hold down the Command key when releasing the mouse button to drop the image into the layout.*

## **Replacing Images**

To replace an image in a pane of the layout with another image, simply insert another image over the original.

## **Deleting Images**

To delete an image from a pane, select the Delete tool in the PrintmiX tool area and click the image to be deleted.



---

## Changing the Display of Images

---

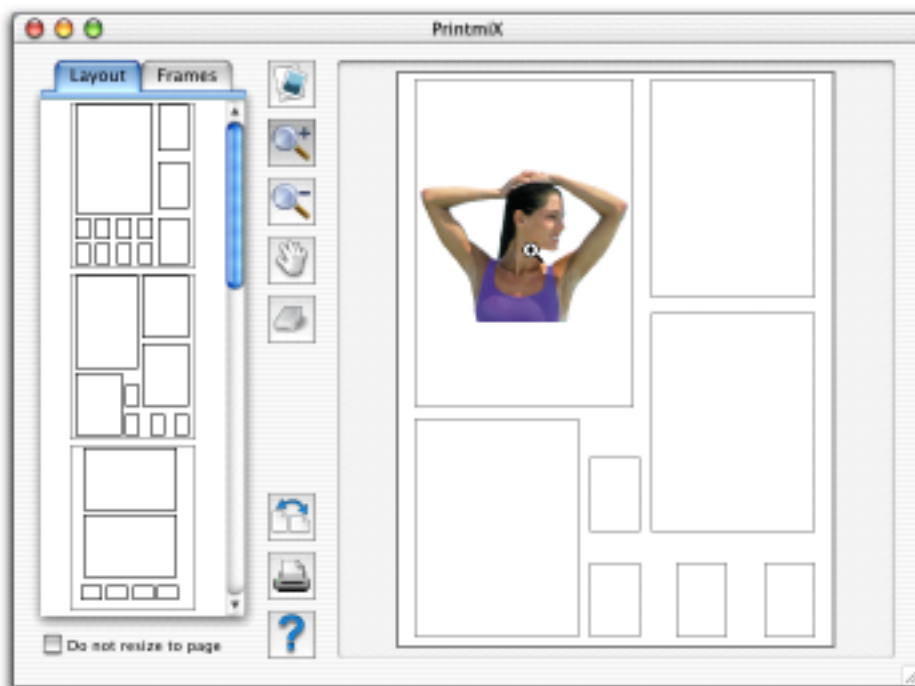
### Zooming In and Out

Once an image is placed in the PrintmiX layout, you can use the Zoom In and Zoom Out tools to resize the image in the pane.

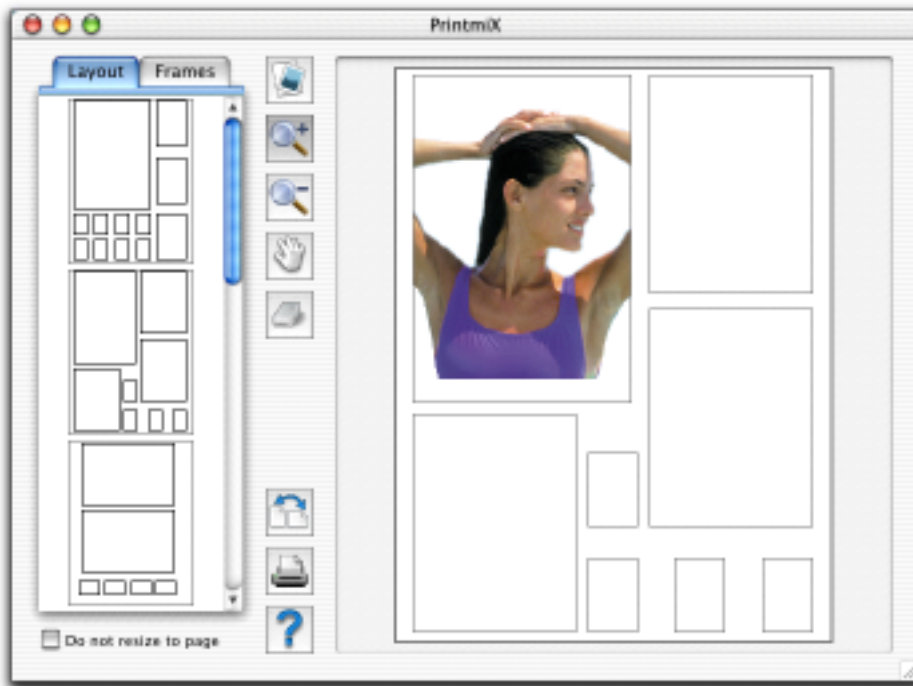
1. Select the Zoom In tool in the PrintmiX tool area.



2. Click the image on the layout that you wish to zoom in on. Click and hold down the mouse button to zoom in more quickly.



3. Release the mouse button when the image reaches the desired magnification



*NOTE: Select the Zoom In tool and hold down the Option key to switch to the Zoom Out tool.*

Use the Zoom Out tool in the same way as the Zoom In tool.



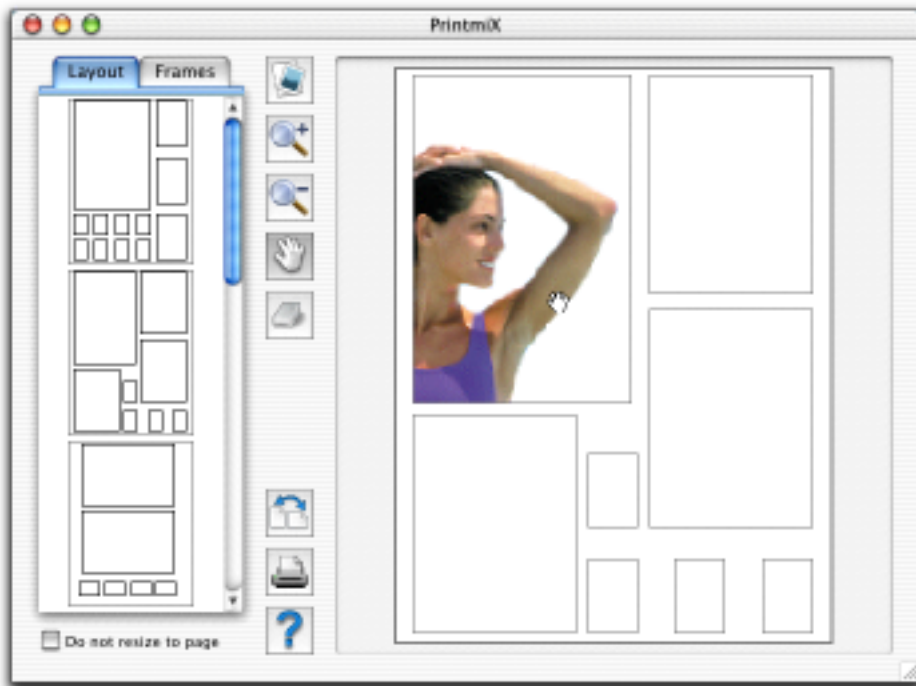
## **Moving the Image in the Layout**

When an image is placed in the PrintmiX layout, the Hand tool may be used to position the image within the pane.

1. Click the Hand tool in the PrintmiX tool area to select it.



2. Position the cursor over the image to be moved, then click and hold down the mouse button.
3. Drag the image into a new position and release the mouse button.



---

## Using Frames

---

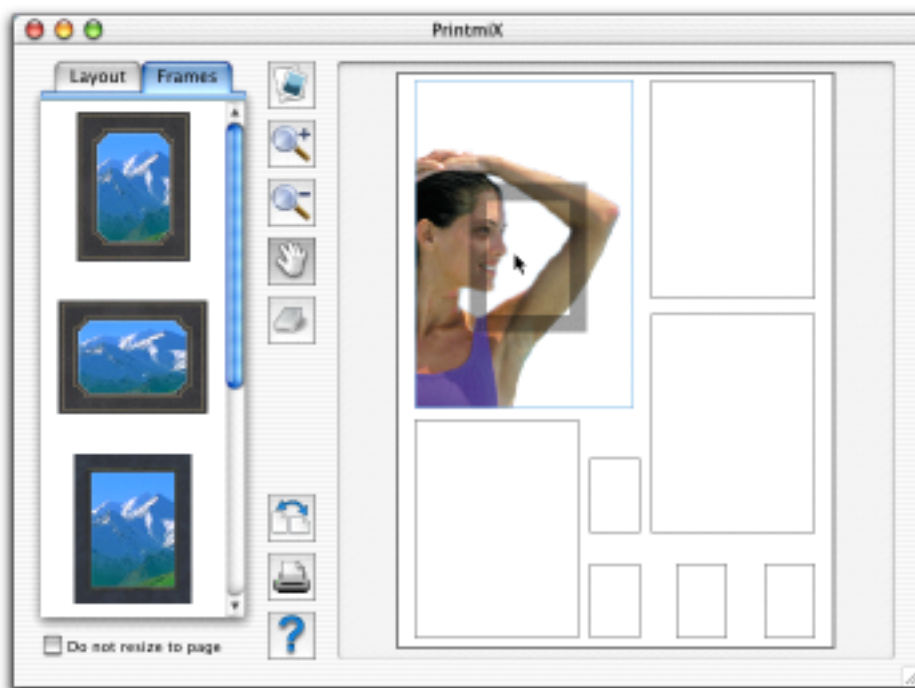
If you wish, you can choose to include a frame around some or all of the images on the layout.

## Adding Frames

You choose a frame from the selection available in the Frames tab.

### To add a frame:

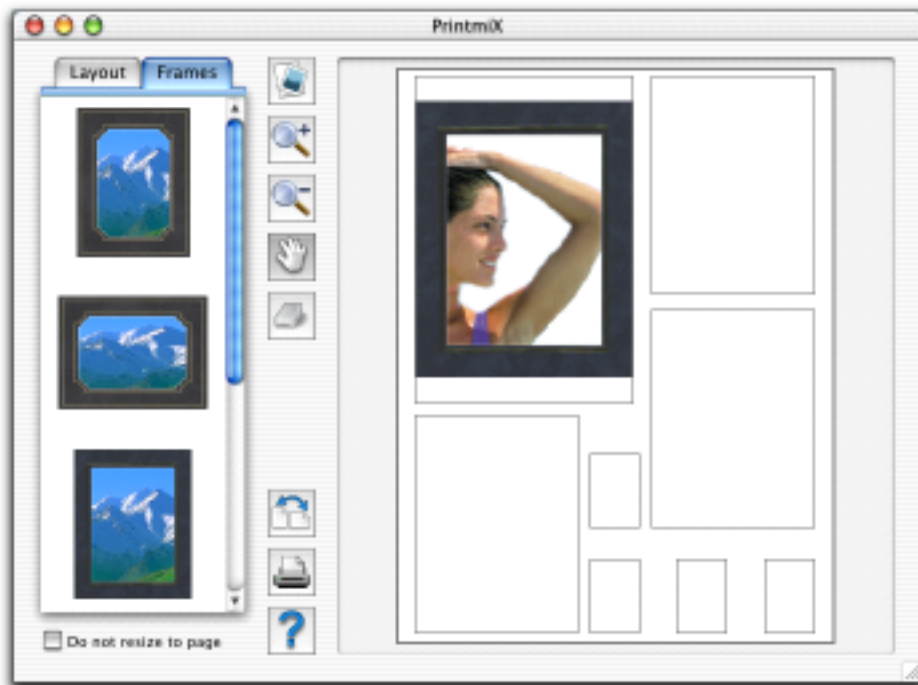
1. Click the Frames tab to select it, then use the scroll bar to view the frames available.
2. When you have decided which frame to use, position the cursor over that frame, press and hold down the mouse button, then move the cursor over the preview area.



3. Release the mouse button.

The frame selected is applied to the chosen pane in the layout.

*NOTE: The image in the pane may be resized to fit within the outside edges of the frame. The image can still be resized or repositioned after a frame has been applied to it. [See Changing the Display of Images on page 16.](#)*



4. Repeat this process for each pane that you wish to apply a frame to.

#### **NOTES:**

*A frame can be applied to a pane that does not yet contain an image. Images are added to panes that contain frames in the same way as they are applied to empty panes. [See Adding Images on page 12 for more details.](#)*

*If there are no frames available in the Frames tab, the Frames folder may have been moved or incorrectly installed. Ensure it is located in the same folder as the PrintmiX application.*

## **Replacing Frames**

To replace a frame applied to a pane in the layout with another frame, simply drag and drop another frame over the first.



## Deleting Frames

To delete a frame and image from a pane, select the Delete tool in the PrintmiX tool area and click the frame and image to be deleted.



*NOTE: A frame cannot be deleted without also deleting any image in the pane.*

---

---

## Printing

---

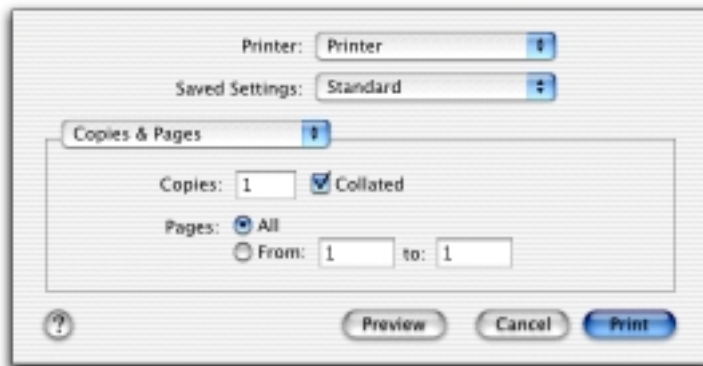
---

When you have applied images and frames to the layout, and have adjusted the images as desired, you are ready to print your layout.

1. Select Print from the File menu or click the Print icon in the PrintmiX tool area.



A Print dialog similar to the one below displays.



2. Enter the number of copies you wish to print.

3. Click the Print button.

The layout is printed.

---

---

## Quitting Microspot PrintmiX

---

---

When you have printed your layout, close the window by clicking the close box in the top left corner of the window, or by selecting Close from the File menu. Layouts cannot be saved

### **To quit the application:**

- Select Quit from the File menu.

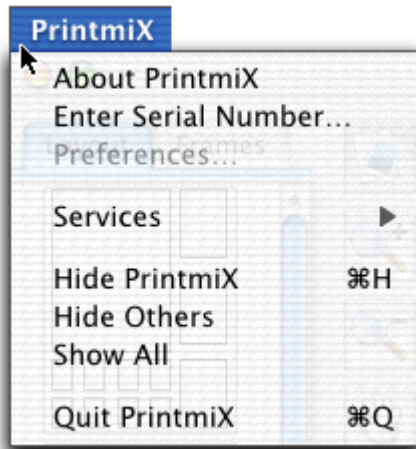
The application closes.

# Menus

---

## PrintmiX Menu

---



### About PrintmiX

Displays a window containing information about the PrintmiX application.

### Enter Serial Number

If the serial number is not entered when the application is launched, it runs in demo mode. Select Enter Serial Number to enter the PrintmiX serial number into a dialog and fully enable the application.

### Preferences

As there are no preference settings for PrintmiX this option is always grayed out.

# Services

The Services submenu is supplied by the System. Refer to your system documentation for details.

## Hide PrintmiX

Hides the PrintmiX application and all its palettes and windows.

## Hide Others

Hides the windows and palettes of all applications other than PrintmiX.

## Show All

Shows the windows and palettes of all applications including PrintmiX.

## Quit PrintmiX

Exits from the application. Any open layouts are closed. Layouts cannot be saved.

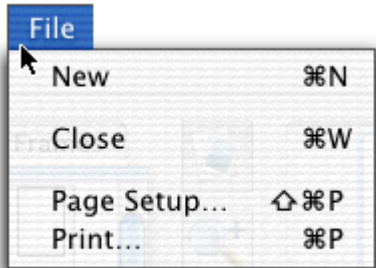
---

---

# File Menu

---

---



## **New**

Opens a new PrintmiX layout window.

## **Close**

Closes the current PrintmiX layout window. Layouts cannot be saved.

## **Page Setup**

Displays the Page Setup dialog used to specify how you want your document to appear on the printed page. Options include paper size, orientation and scale.

## **Print**

Displays the Print dialog for the currently selected printer.

---

---

## **Edit Menu**

---

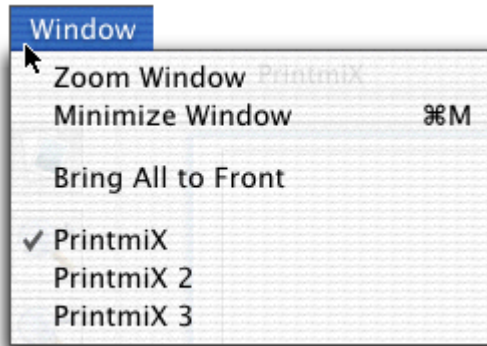
---

The Edit menu is included in the PrintmiX application for reasons of consistency, but as no edit options are available, they are always grayed out.

---

## Window Menu

---



### Minimize Window

Moves a window out of the way by minimizing it, which puts the window into the Dock. This is an alternative to clicking the middle button in the top left corner of a window.

### Bring All To Front

Brings all the PrintmiX document windows to the front, above the windows of any other applications.

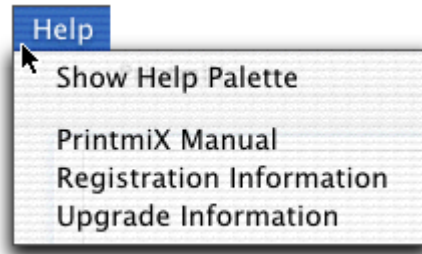
### [Layout Names]

Open layouts are listed at the bottom of the Window menu. Select the layout name to make it the active layout.

---

## Help Menu

---



### **Show/Hide Help Palette**

Display or hides the PrintmiX help palette.

### **PrintmiX Manual**

Opens the PrintmiX manual.

### **Registration Information**

Displays the Registration Information dialog used to register the product via the internet.

### **Upgrade Information**

Displays the Upgrade Information dialog used to obtain any available information about upgrades from Microspot's web pages.