

Desktop Transporter

VERSION 2.0
DOCUMENTATION



© 2001-2006 **DEVON***technologies*

TABLE OF CONTENTS

Introduction	5
The Desktop Transporter Advantage	6
What's New	9
Requirements	11
Installing, Updating, Removing	13
License Agreement	14
Sharing Your Desktop	16
Share Your Desktop	17
Unshare a Desktop	20
Controlling Access with a Password	21
Connecting to Displays	22
Connecting to a Shared Desktop	23
Using a Connected Machine	26
Entering and Leaving Fullscreen Mode	32
Getting Statistics	34

Using the Menu Extra	36
Opening Remote Desktops, Changing Settings	37
Removing the Menu Extra	39
Preferences	40
General Settings	41
Sharing Settings	45
Optimizing Performance	48
Decreasing Bandwidth Usage	49
Lowering Processor Usage	50
Troubleshooting	51
Appears to Hang When Connecting	52
Problems Locating the Remote Desktop	54
Problems Interacting with the Remote Desktop	55
Problems with Network Address Translation (NAT)	57

Advanced Usage	58
The Desktop Transporter daemon	59
Running 'desktoptransporterd'	61
Configuring the Daemon	63
Daemon Command Reference	66
Other Products	70
At a Glance	71
DEVONthink	73
DEVONagent	75
DEVONnote	78
PhotoStickies	80
Desktop Transporter	81
Needful Things	83

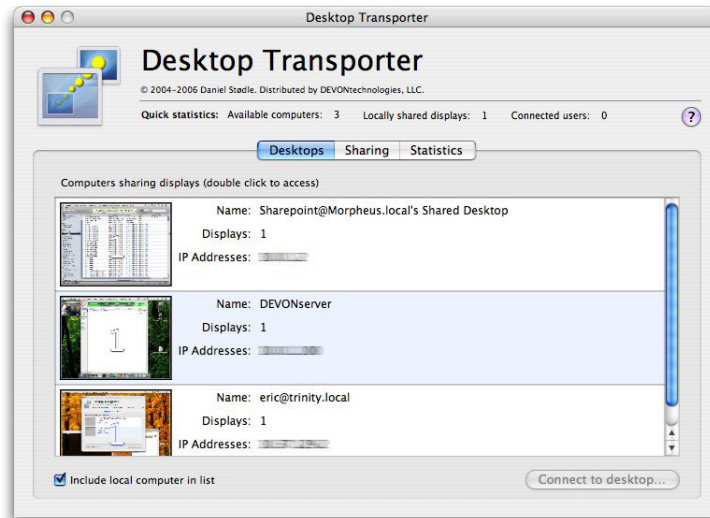
INTRODUCTION

The Desktop Transporter Advantage	6
What's New	9
Requirements	11
Installing, Updating, Removing	13
License Agreement	14

Desktop Transporter is an application that allows you to share the desktop of one or multiple users of your Mac, as well as connect to other shared desktops. The application works best with a reasonably fast network connection between the shared Macs, say an Airport (11 mbps) or Ethernet network, and requires Mac OS X 10.3 or later.

THE DESKTOP TRANSPORTER ADVANTAGE

With Desktop Transporter, it is possible to get access to your Mac from anywhere. Connect to any Mac set to share and control it from your desktop. Switch between all available shared Mac desktops and use copy/paste to transfer text and graphics between the local and remote machine.



Bonjour support makes it easy to discover shared machines on your local area network (LAN), while password protection keeps your data away from unauthorized eyes.

Some other key features:

- *Multi-monitor support:* Desktop Transporter supports sharing multiple desktops from all attached monitors simultaneously, allowing for greater flexibility and choice.
- *Fast user switching:* Your displays remain shared even if your user is switched out by another user. This means that two or more people can use the same Mac simultaneously, with one user working locally and the remaining users accessing the Mac remotely.
- *Full screen access:* Work with a remote Mac as if it was your local one in full screen mode. If the remote screen is too large, Desktop Transporter shows only a part of it , following the mouse pointer.
- *Non-English keyboards:* One of the biggest disadvantages of VNC outside the English-speaking world is that it doesn't support non-English keyboards. Desktop Transporter plays well with any keyboard, from French to German to Russian.

- *Synchronized clipboards:* Desktop Transporter lets you seamlessly copy and paste both text and images from one connected machine to the other.
- *Menu extra:* There is no need to keep the main application running to share or access your displays. Desktop Transporter comes with a handy menu extra that gives you instant access to displays available on your local network, as well as allows you to change your local sharing settings.
- *Faceless sharing:* Desktop Transporter uses a background process, known in Unix-terminology as a 'daemon,' to manage shared displays. This means that you can optionally leave your displays shared, without having the menu extra or the main application running. The daemon also offers command-line control for advanced users.
- *Share-on-login:* Desktop Transporter can automatically share your displays when you log in.
- *Password protection:* Access to your displays can be protected using a password.

WHAT'S NEW

VERSION 2.0

Desktop Transporter 2.0 is a major rewrite of the application, and includes both major and minor changes (as well as important bug fixes). The following list of changes outlines the most major changes and new features.

- *NEW:* Native Universal Binary support of both PowerPC and Intel-based Macs.
- *NEW:* Support for Fast User Switching; your desktops remain shared even when your user ID is switched out.
- *NEW:* A handy menu extra lets you change your sharing settings, and access shared displays, without keeping the main application open.
- *NEW:* By keeping a process running in the background, Desktop Transporter is able to share your desktops without having the main application or the menu extra running.
- *NEW:* Desktop Transporter allows you to view remote desktops in fullscreen without scaling them down to fit on your own display.

- *NEW*: Improved clipboard synchronization; synchronized clipboards work more reliably than in previous versions of Desktop Transporter.
- *NEW*: Desktop Transporter can share your displays automatically once you log in.

REQUIREMENTS

Desktop Transporter is a Universal Binary application, meaning that it fully supports both PowerPC and Intel based Macs. It requires Mac OS X 10.3 or later. Desktop Transporter is not compatible with other remote desktop solutions available for Mac OS X, such as Apple Remote Desktop or VNC.

COMPUTER REQUIREMENTS

Desktop Transporter works fine with any Mac that runs Mac OS X 10.3 or later, and typically uses between 5 and 20MB of RAM, depending on the number of desktops you are connected to.

Sharing one or more desktops will not usually overly tax your RAM, although you may notice that the performance of the Mac sharing its display(s) will be somewhat lower than usual.

NETWORK REQUIREMENTS

Desktop Transporter also requires a good network connection between the Macs sharing and accessing the displays. To illustrate the necessity of a fast network, a display running at 1024x768 pixels in millions of

colors takes 3MB to store. Normally, the entire display isn't updated all at once, but even so, the bandwidth requirements per second tend to approach 0.5 to 1.0 MB/s. Broadband connections are highly recommended.

For best performance, connected Macs should be on the same local area network (LAN). You can use Desktop Transporter on a wireless network, however you should consider reducing the quality of the shared displays in order to reduce network load.

For more info on optimizing Desktop Transporter's performance, [click here](#).

INSTALLING, UPDATING, REMOVING

INSTALLING AND UPDATING

To install Desktop Transporter onto your Mac, just move the Desktop Transporter application package to the Applications folder (or alternate destination of your choice).

To update an existing version of Desktop Transporter, simply copy the application package from the disk image to your Applications folder, replacing the old version.

REMOVING DESKTOP TRANSPORTER FROM YOUR MAC

To remove Desktop Transporter from your Mac, trash the following files and folders (~ stands for your Home directory):

- Desktop Transporter
- ~/Library/Preferences/com.danielstoedle.
DesktopTransporter.plist
- Open System Preferences, remove 'Desktop Transporter Status Menu' and 'Desktop Transporter Share-on-Login' from the Login Items if necessary.

LICENSE AGREEMENT

PLEASE READ THIS LICENSE CAREFULLY BEFORE USING THIS SOFTWARE. BY USING THIS SOFTWARE, YOU ARE AGREEING TO BE BOUND BY THE TERMS OF THIS LICENSE AGREEMENT. IF YOU DO NOT AGREE TO THE TERMS OF THIS LICENSE, DELETE THE SOFTWARE OR RETURN THE SOFTWARE AND RELATED DOCUMENTATION TO DEVONTECHNOLOGIES, LLC.

1. License: The application and other components (sound and graphics) accompanying this License, whether on disk, in read only memory, or on any other media (the “Software”), and the related documentation are licensed to you by DEVONtechnologies. You own the disk on which the Software is recorded but DEVONtechnologies and/or DEVONtechnologies’ Licensor(s) retain title to the Software and related documentation. This License allows you to non-simultaneously use the Software on multiple computers by the same person.
2. Restrictions: The Software contains copyrighted material, trade secrets and other proprietary material and in order to protect them you may not decompile, reverse engineer, disassemble or otherwise reduce the Software to a human-perceivable form. You may not sub-license, modify, rent, lease, or create derivative works based upon the Software in whole or in

part. You may not distribute the Software in any form, including, but not limited to, electronic information service distribution, bulletin board distribution, and magnetic or optical medium distribution.

3. Disclaimer of Warranty on Software: You expressly acknowledge and agree that use of the Software is at your sole risk. The Software and related documentation is provided “AS IS” and without warranty of any kind.

4. Limitation of Liability: UNDER NO CIRCUMSTANCES INCLUDING NEGLIGENCE, SHALL DEVONTECHNOLOGIES BE LIABLE FOR ANY INCIDENTAL, SPECIAL OR CONSEQUENTIAL DAMAGES THAT RESULT FROM THE USE OR INABILITY TO USE THE SOFTWARE OR RELATED DOCUMENTATION. In no event shall DEVONtechnologies’ total liability to you for all damages, losses and causes of action (whether in contract, tort (including negligence) or otherwise) exceed the amount paid by you for the Software.

Apple, Carbon, Classic, Cocoa, Colorsync, Darwin, Mac OS X, Quicktime, Quartz and all other registered names are trademarks of their respective owners.

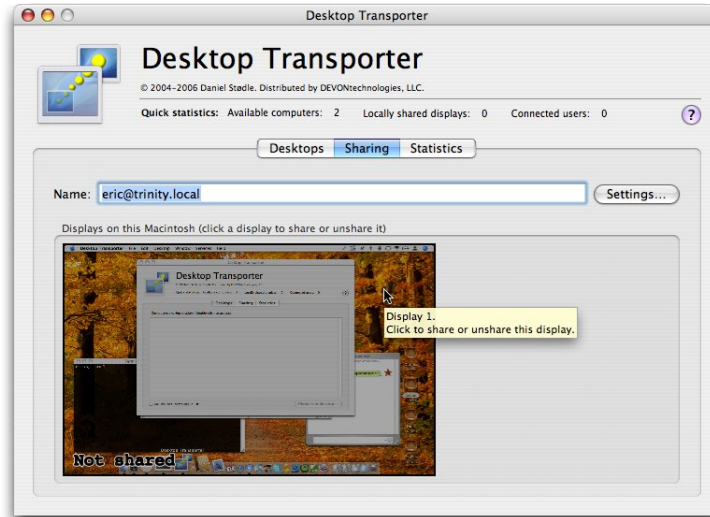
SHARING YOUR DESKTOP

Share Your Desktop	17
Unshare a Desktop	20
Controlling Access with a Password	21

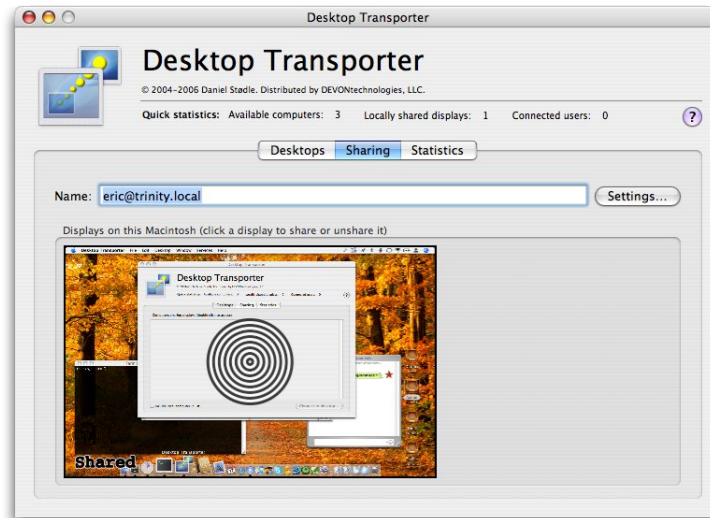
Sharing your desktop with Desktop Transporter is very simple. In fact, the first time you start Desktop Transporter, your desktop (or each of your screens if you are using more than one monitor) will be shared by default. To start or stop sharing a desktop or screen, follow the instructions in this chapter.

SHARE YOUR DESKTOP

Sharing your desktop with Desktop Transporter is very simple. You change the sharing status of your desktop or your separate screens on the Sharing tab in Desktop Transporter's browser window. To share your desktop, simply click its corresponding miniature version. On Macs with multiple monitors attached, Desktop Transporter shows multiple miniature screens.



When a desktop is shared, the text 'Shared' appears in the miniature's lower-left corner, the preview appears in color and 'radio waves' emanate from the center of the image. When a desktop isn't shared, it appears in grayscale with the text 'Not shared' in its lower-left corner.



You can change the name of your shared desktop(s) by entering a new name in the name field. The name is used when your desktop(s) are advertised using Bonjour. To change other settings, click the Settings button or select Desktop Transporter > Preferences.

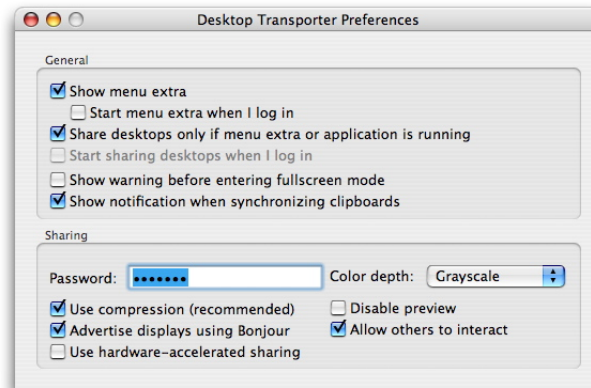
When you share or unshare your local desktop(s), you will see the counter for 'Number of locally shared desktops' under the Desktop Transporter heading change to reflect the current sharing status. Also, if you have checked 'Include local computer in list' on the Desktops tab, you will also see your computer appear or disappear as you share and unshare your desktop(s).

UNSHARE A DESKTOP

To unshare a desktop, simply click on the miniature version of a shared desktop. The radio waves disappear, and the image grays out with the text 'Not shared,' indicating that the desktop is no longer shared.

CONTROLLING ACCESS WITH A PASSWORD

Desktop Transporter lets you control access to your desktop(s) using a password. Set your password in Desktop Transporter's Preferences panel, which you access by selecting Desktop Transporter > Preferences.



Once you have opened the preferences panel, you set a password by entering it in the Password field. The password takes effect immediately.

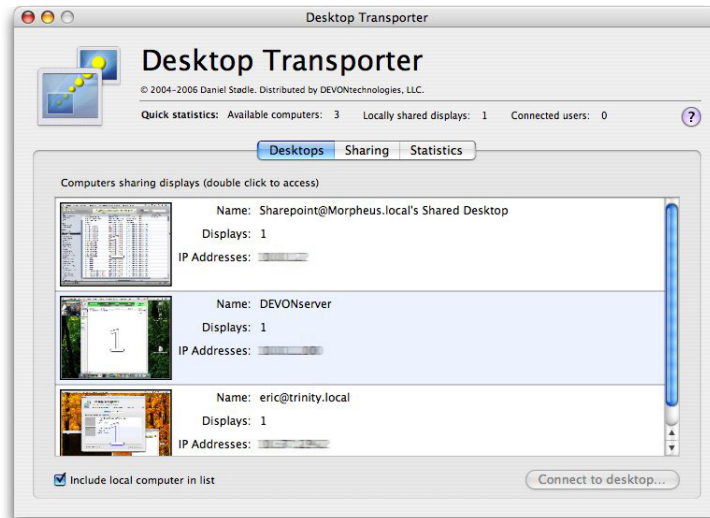
CONNECTING TO DISPLAYS

Connecting to a Shared Desktop	23
Using a Connected Machine	26
Entering and Leaving Fullscreen Mode	32
Getting Statistics	34

Connecting to a shared display is as simple as double-clicking it in the list of shared desktops, visible in the Desktops tab in Desktop Transporter's main window.

CONNECTING TO A SHARED DESKTOP

Connecting to a shared desktop is as simple as double-clicking it in the list of shared desktop, visible in the Desktops tab in Desktop Transporter's main window. If the other Mac has previews enabled, you see a preview of the remote desktop in the list as well, otherwise you will merely see a black square with a number in it.



The number indicates which remote desktop you are seeing a preview of. If the other Mac has more than one shared screen, you will only see a preview of one of the screens.

CONNECTING USING THE BROWSER WINDOW

If no Desktop Transporter browser window is opened, open one using File > Open Browser. To connect to the selected desktop, simply press the Connect to Desktop button, or double-click the remote Mac's entry in the list of shared systems. You can also single-click on the preview image. Doing this will open Desktop Transporter's viewer window. If the remote Mac requires a password for access, you will be prompted for this password. Otherwise, the remote Mac's first shared screen should appear in the main viewer window after a brief pause.

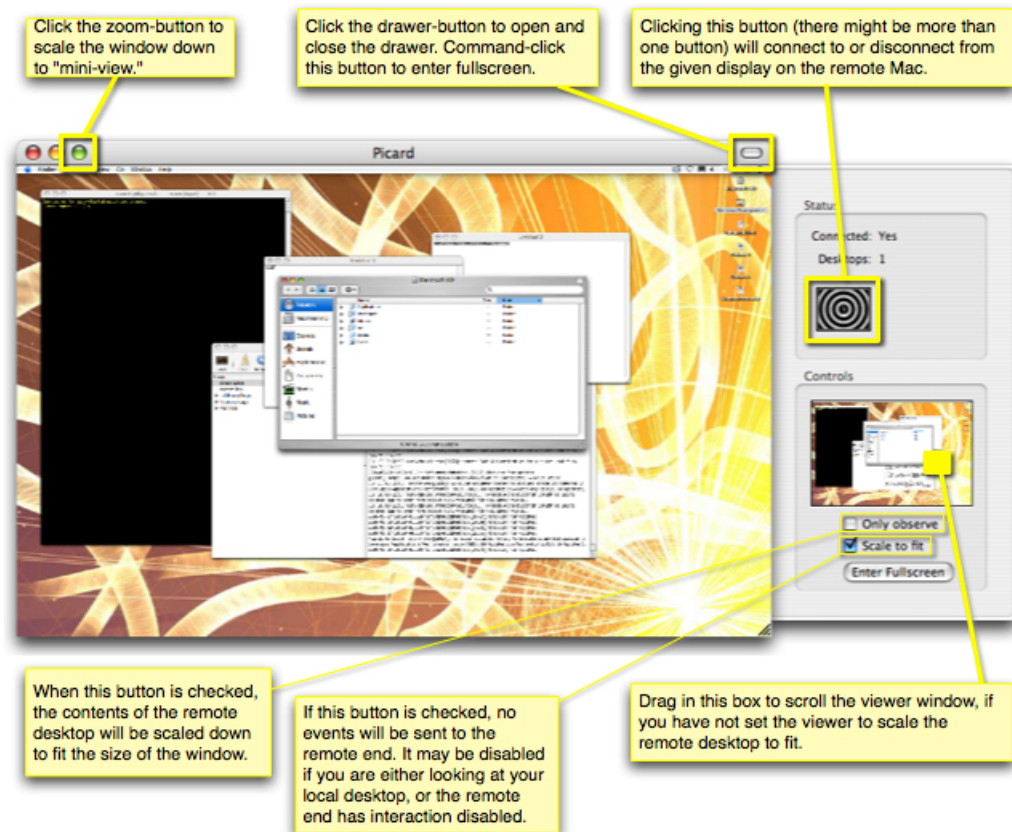
Note: If Desktop Transporter appears to become unresponsive when you select a Mac in the list, it is likely that you are running into firewall problems. Please see the [Troubleshooting section](#) for more information.

CONNECTING MANUALLY

If you don't see the computer you wish to connect to in the list, you can add it by selecting Desktop > Connect to Shared Desktop or by pressing Command-K. This will bring up a dialog box that allows you to enter the address and the port number of the remote desktop (it is usually OK to leave the port as-is). This is necessary if the remote Mac isn't on the same local network as you are, or if the remote Mac doesn't advertise its desktops using Bonjour. The address can either be an IP address or a hostname.

USING A CONNECTED MACHINE

When you connect to a remote Mac, Desktop Transporter will open a viewer window for you before automatically selecting the first available screen. At this point, you can interact with the remote desktop almost as if it was local.



USING THE DRAWER

When the viewer window opens, it will, by default, have a drawer attached. The drawer opens and closes when you click the viewer window's toolbar button, located in the top-right corner of the viewer window's title bar.

The drawer contains a number of controls that let you navigate the remote desktop, as well as select which remote desktop to access. The drawer's Status area contains information about the connection, as well as one or more miniature previews. They indicate the screens shared by the remote Mac, and you can switch between the available shared desktops by clicking the different miniature preview buttons. The currently selected desktop's button will have small radiowaves radiating from it.

In the Controls area of the viewer window's drawer, you will see a miniature version of the currently viewed remote desktop, as well as two checkboxes: one, that let you control whether to only observe the remote desktop, and a second which decides whether the remote desktop's contents should be scaled to fit inside the viewer window. When Scale to fit is disabled, you can scroll the visible area of the remote desktop by dragging the black, outlined rectangle in the miniature display. (The rectangle will only appear when 'Scale to fit' is disabled.)

Note: In some cases the 'Only observe' checkbox will be disabled. There are two reasons that this may happen. First, that you are looking at your own, shared screen (in which case it wouldn't make sense to interact anyway), or second, that the remote party wants to prevent others from interacting; that is, the other Mac's 'Allow others to interact' box is not checked in Desktop Transporter's Preferences.

INTERACTING WITH THE REMOTE MACHINE

When connected to a remote Mac, you will be able to interact with it only if the remote end has interaction enabled. If the remote end allows interaction, you should be able to use it almost as if the machine was local.

Note: When you are running in windowed mode, some keyboard shortcuts will affect the local Mac rather than the remote Mac. These include Command-Tab and the Exposé shortcuts (most others will be sent to the remote Mac). When you are running the remote desktop in fullscreen mode, all keyboard shortcuts work as you would expect on the remote Mac, including Command-Tab and Exposé.

In cases where the remote desktop becomes unavailable, or when you disconnect from it by clicking on the radiating button in the desktop window, the remote desktop will appear grayed out.

USING COPY AND PASTE

Desktop Transporter supports synchronized copy/paste. This means that you can copy and paste text or graphics from a remote desktop to your local system, and vice versa.

Desktop Transporter supports copy/paste of most text and graphics objects, although you may come across objects that won't work properly. When you copy something from a remote desktop, you will briefly see a notification appear in the viewer window, informing you that the clipboards are being synchronized. The notification will disappear once the synchronization is complete. You can disable the notification in Desktop Transporter's [Preferences](#). Text is typically synchronized instantaneously, while graphics may take a little while longer. Copy/paste support is always enabled.

MINIMIZING A VIEWER WINDOW

When clicking the green Zoom button in the window's title bar, the window will reduce to a small 'mini-view' of the remote desktop. You can still manipulate the remote desktop while in this zoomed state, although not with as much precision as you would were you not zoomed in.

ENTERING AND LEAVING FULLSCREEN MODE

To enter fullscreen mode, you can either select Desktop > Enter Fullscreen, Command-click the drawer button in the top right corner of the window's titlebar, or click the Enter Fullscreen button in the viewer window's drawer. You will be presented with a dialog box informing you on how to exit fullscreen mode. You will also be given the option of disabling the Enter Fullscreen dialog for future invocations.

You leave fullscreen mode by pressing Command-Control-F. All other key combinations are sent to the remote machine.

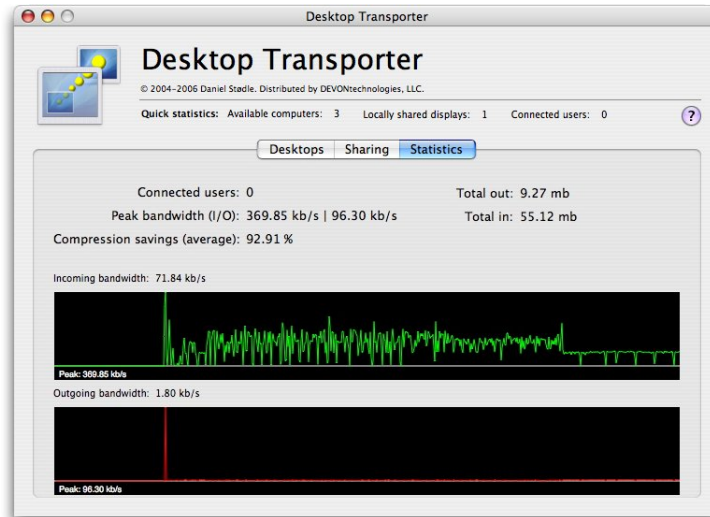
If you have checked the 'Scale to fit' checkbox in the viewer window's drawer, the remote desktop will be scaled down in order to fit your current screen's resolution. If the 'Scale to fit' checkbox isn't checked, the remote desktop will not be scaled down, and you can navigate it by moving your mouse to the edges of the remote desktops's visible area.

Note: If your local physical display is running at a resolution larger than the remote screen, no scaling will take place, regardless of the 'Scale to fit' checkbox' state.

You can select the screen on which Desktop Transporter shows the remote desktop in fullscreen by moving the desktop window to the screen which you want to use before entering fullscreen mode.

GETTING STATISTICS

In the Statistics tab of a Desktop Transporter's browser window, you are presented a live graph of Desktop Transporter's bandwidth usage, an estimate of how much outgoing bandwidth is saved by using compression, total amount of data transferred, and peak bandwidth.



The Statistics tab can be useful to see how Desktop Transporter uses the available bandwidth, and to examine the effects of reducing color depth or resolution of your shared desktops.

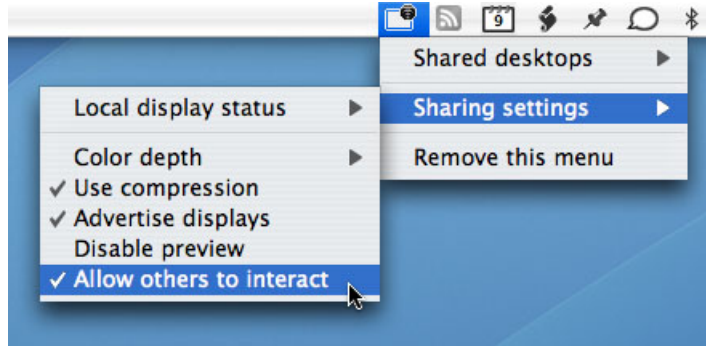
USING THE MENU EXTRA

Opening Remote Desktops, Changing Settings	37
Removing the Menu Extra	39


Desktop Transporter comes with a menu extra that lets you access shared desktops on your local network without going through the main Desktop Transporter application.

OPENING REMOTE DESKTOPS, CHANGING SETTINGS

Besides listing the available remote desktops, the menu extra lets you configure your own shared desktops, and conveys the current state of remote and locally shared desktops to you using its in-menu icon.



A small cross appears in the circle when no local desktops are shared, otherwise tiny radiowaves appear in the circle. When Desktop Transporter discovers desktops shared on the local network using Bonjour, the small screen will light up and be highlighted with a light, blue color.

Remote displays available	No remote displays	Local sharing enabled
		
		Local sharing disabled

The menu extra offers its options through two sub-menus. The first, called Shared desktops, lets you access any desktops visible on the local network. Select any desktop advertised on the network via Bonjour to open a viewer window for it.

The second sub-menu, Sharing Settings, lets you configure the sharing state of your local desktops, as well as change the sharing depth, use of compression, Bonjour advertising, and remote previews. For an in-depth explanation of these settings, see the chapter on [Preferences](#).

REMOVING THE MENU EXTRA

To remove the menu extra from your menu bar, select the 'Remove this menu' menu item. If you don't want the menu extra to appear when you launch Desktop Transporter, you can disable it in Desktop Transporter's Preferences. You can also configure the menu extra to start as soon as you log in. To do this, check the 'Start menu extra on login' item, also located in Preferences.

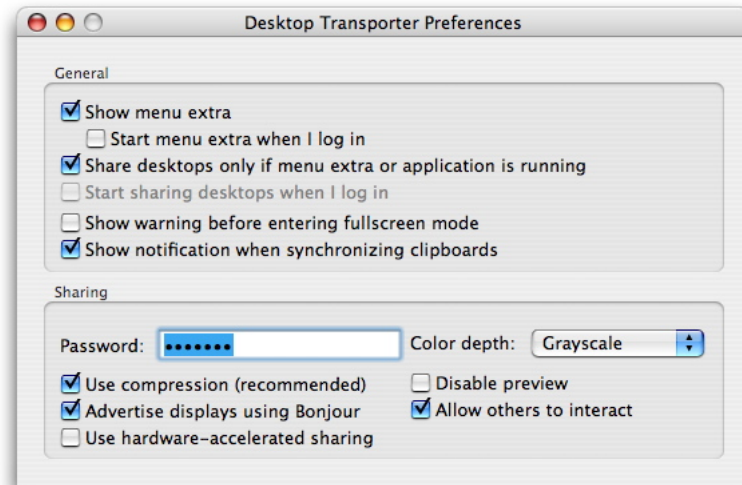
PREFERENCES

General Settings	41
Sharing Settings	45

Desktop Transporter has a number of settings that can be tweaked to configure its behaviour to best fit your needs. To configure these settings, choose Preferences from the Desktop Transporter menu.

GENERAL SETTINGS

The following describes Desktop Transporter's general settings.



CONTROLLING THE MENU EXTRA

The first block of options allow you to control if the menu extra shall be shown and if yes, if it shall be started automatically after you log in.

- *Show menu extra:* With this setting enabled, Desktop Transporter's menu extra will start when launched. The menu extra allows you to access desktops advertised using Bonjour as well as change your sharing settings without having to open the main Desktop Transporter application.
- *Start menu extra when I log in:* Enable this option to launch the menu extra whenever you log in. This is accomplished by adding an item to your login items. Uncheck this option to remove the menu extra from your login items.

CONTROLLING BACKGROUND SHARING

The next few options control whether Desktop Transporter will share your desktop; even if the menu extra and main Desktop Transporter application are not running.

- *Share desktops only if menu extra or application is running:* This setting, which is on by default, makes sure that your

desktops are not shared once you quit both the menu extra and the main application. If this setting is disabled, your desktops will remain shared until you log out, even if neither the menu extra nor the main application is running.

- *Start sharing desktops when I log in:* This setting lets you share your desktops immediately after you log in, without having to start the main application or the menu extra. This is accomplished by adding a helper application to your login items that starts the 'desktoptransporterd' background process (daemon). This setting is grayed out (disabled) if you have 'Share desktops only if menu extra or application is running' enabled.

OTHER SETTINGS

The last two general options let you switch on-screen notifications on and off.

- *Show warning before entering fullscreen mode:* This setting lets you control whether or not a warning appears before entering fullscreen mode.
- *Show notification when synchronizing clipboards:* When this setting is selected you will see a notification in Desktop

Transporter's viewer window whenever the clipboards of the remote and local machines are being synchronized. The notification persists until the synchronization is complete.

SHARING SETTINGS

The following settings affect how your local desktop are shared with other Macs running Desktop Transporter on your network, and if they're advertised using Bonjour or not.

CONTROLLING ACCESS TO YOUR DESKTOP

Your data is valuable. Protect access to your Mac by mandating that users enter a password; those who can't are then prevented from interacting with your machine.

- *Password:* Enter a password here to restrict access to your shared desktops. Note that the password you enter here will be stored as clear text in Desktop Transporter's preferences file, so be sure to choose a unique password (in other words, a password for this use only).
- *Allow others to interact:* When this box is checked, other users — once connected to your desktop — will be able to interact with it (move the mouse, click, enter text, and so on). If you only wish to allow others to observe your desktop, uncheck this box.

- *Disable preview:* Disabling preview will prevent others from seeing a miniature version of your shared desktops. If you are concerned about security, you should enable this option. Instead of seeing your desktop, other users will only see a black box, filled with a number indicating which physical screen it is (the number is the same as that you also see embossed on the desktop preview on the [Sharing](#) tab).

CONTROLLING THE SHARING

Finally, fine-tune your sharing settings for optimum performance.

- *Color depth:* Choose either Millions, Thousands or Grayscale. Millions of colors means better quality, whereas using Thousands of colors provides you with better performance. For best performance, use Grayscale.
- *Use compression:* This option enables the use of Run Length Encoding, a fast and simple way of reducing network traffic while not adding too much latency to the shared desktop. Use of this option is highly recommended.
- *Advertise displays using Bonjour:* With this option on, other Macs on your local network are able to automatically discover your shared desktops. Highly recommended for convenience,

though if you are concerned about security, we recommend you disable it.

- *Use hardware-accelerated sharing:* This setting allows you to enable the use of OpenGL for accelerating shared desktops. Using hardware-accelerated sharing is a good idea if you are on a fast network and the content of the screen you are sharing changes often. You may notice that the sharing Mac's performance is somewhat slower with this setting enabled.

OPTIMIZING PERFORMANCE

Decreasing Bandwidth Usage	49
Lowering Processor Usage	50

Using a remote desktop over a network connection puts a very heavy load on your network, and a slow connection can significantly impair usability. Here are some tips on how to improve the performance.

In general, there are a number of ways for you to increase performance when using Desktop Transporter. The optimizations mainly fall into two categories: Decreasing the amount of data sent over the network, and decreasing processor usage on the Macintosh sharing desktops (leaving more time for the applications on the shared computer to do their work).

DECREASING BANDWIDTH USAGE

The following optimizations will decrease bandwidth usage:

- Share your desktop as grayscale instead of thousands or millions of colors (you can change this on the fly)
- Make sure compression is enabled
- Change the shared screen to a lower resolution

LOWERING PROCESSOR USAGE

These optimizations will decrease processor usage, possibly improving update latency:

- Make sure that the desktop is shared with the same number of colors as it is actually displaying (ie, if your display is currently running with millions of colors, you should share it using millions of colors as well). This does not apply to Grayscale; for grayscale mode, you should have your screen set to millions of colors.
- Enable hardware-accelerated sharing. Enabling hardware acceleration can dramatically lower the CPU usage of the Mac sharing its desktop(s). It may interfere with some applications using OpenGL, however, and you may also notice that local graphics performance is somewhat sluggish.
- Disable compression. This has a very low impact on performance, and the benefits are not great. You risk severely increasing bandwidth usage by doing this, but if network performance is not an issue, it might be worthwhile, especially when you are attempting to watch quickly-changing content (such as an animation, a movie, or a game).

TROUBLESHOOTING

Appears to Hang When Connecting	52
Problems Locating the Remote Desktop	54
Problems Interacting with the Remote Desktop	55
Problems with Network Address Translation (NAT)	57

As Desktop Transporter is a very network oriented application, there are many things that can go wrong, despite the software's best efforts. A number of common problems, and their solution, are presented here.

APPEARS TO HANG WHEN CONNECTING

Desktop Transporter may appear to hang (as indicated by the spinning rainbow of death) in cases where the remote host is not responding. This is typically caused by the remote host running firewall software, and is most easily solved by opening port 7001 on the remote Mac. If the remote Mac is running the default firewall software, follow these steps to open up port 7001:

- Open System Preferences
- Select Sharing and click the Firewall tab
- If the firewall isn't running, the firewall is not the cause of your problems. Read on below for other possible causes.
- If the firewall is running, proceed. To open port 7001, click New and select Other in the menu that appears.
- Enter 7001 in the field for port number, and a description (such as "Desktop Transporter" or similar)
- Click OK, and make sure that the checkbox for Desktop Transporter is checked in the list of open ports

Note: The firewall status of the client Mac is of no importance, unless that Mac is also sharing its desktop.

If there are multiple users sharing their desktops on the same Mac, you will also need to open up ports 7002, 7003, and so on. Desktop Transporter may use ports in the range between 7001 and 7021.

PROBLEMS LOCATING THE REMOTE DESKTOP

If you don't see shared desktops in the list of shared desktops or not the ones you are interested in, there are a number of things you can do:

- First, check that the sharing computer is 1) sharing its desktop(s), and 2) that it is advertising it or them using Bonjour (the 'Advertise desktops using Bonjour' checkbox should be checked).
- If both of the above conditions are fulfilled, it is possible that the other Macintosh is on a different subnet, where Bonjour isn't getting through. You can solve this by connecting manually to the remote desktop. To do this, you need to know the hostname or IP address of the Mac to which you wish to connect, and then enter this information after choosing Desktop > Connect to Shared Desktop.
- Generally, if you are able to use iTunes Music Sharing to share music between your Macs, you should also be able to use Desktop Transporter's auto-discovery of shared desktops. iTunes Music Sharing can be a useful test to determine if Bonjour is working properly between Macs.

PROBLEMS INTERACTING WITH THE REMOTE DESKTOP

In some cases, you may experience problems interacting with a remote desktop, either in full screen mode or in windowed mode.

MOUSE AND KEYBOARD DON'T DO ANYTHING

First, make sure that the 'Only Observe' checkbox is unchecked, otherwise, you will not be able to interact with the remote desktop at all. Also, ensure that the computer sharing the desktop has the 'Allow others to interact' checkbox on the Sharing tab checked.

To access the 'Only Observe' checkbox, you need to open the viewer window drawer for the display in question. Click the window's toolbar button (the long button in the top-right corner of the viewer window's titlebar).

MODIFIER KEYS REACT STRANGELY

A common reason for problems or inconsistencies when interacting with the remote desktop is that the state of the modifier keys (Command, Shift, Option, and Control) has become inconsistent. This means that the remote computer thinks that, for instance, the Command key is pressed, whereas in reality it isn't.

To fix this, simply press and release, in turn, the modifier keys on your keyboard. This should return the remote state to normal, allowing you to interact with the remote desktop as usual.

PROBLEMS WITH NETWORK ADDRESS TRANSLATION (NAT)

Network Address Translation, or NAT, often causes problems when you attempt to connect manually to a remote Macintosh. These problems are in general difficult to fix without detailed knowledge of the network infrastructure, and so won't be dealt with here.

ADVANCED USAGE

The Desktop Transporter daemon	59
Running 'desktoptransporterd'	61
Configuring the Daemon	63
Daemon Command Reference	66

As of version 2.0, Desktop Transporter has been split up into multiple pieces. One of the advantages to this is that parts of Desktop Transporter can be started and configured from the command line. This chapter tells you more about this functionality, and shows you how to harness the flexibility of this new, split architecture.

THE DESKTOP TRANSPORTER DAEMON

Desktop Transporter consists of four main pieces:

- The Desktop Transporter application
- The menu extra
- The Desktop Transporter daemon
- The helper application Desktop Transporter Share-On-Login

The menu extra, the daemon, and the helper application are located inside the application package and are controlled from application's Preferences pane. The Share-On-Login application only does one thing, namely to start the Desktop Transporter daemon, which is called "desktoptransporterd."

The Desktop Transporter daemon, 'desktoptransporterd,' is the application that is responsible for sharing your desktop. For regular use, this is all you need to know. However, if you are interested in sharing your desktops remotely, you may want to read on.

When the daemon desktoptransporterd is launched, it opens a random port in the high range (usually 40,000 to 65,000) on which it listens for control connections. The port is opened only on the 'localhost' device,

which means that you will only be able to connect to the port from the local machine. This is a security measure. If you need to start or configure the daemon remotely, you should enable the Remote Login feature of Mac OS X, which allows you to connect to your computer using SSH.

RUNNING 'DESKTOPTRANSPORTERD'

The Desktop Transporter daemon is located inside Desktop Transporter's main bundle. To locate it, simply execute the following command in a Terminal window:

```
cd "Desktop Transporter.app/Contents/Resources/"
```

The daemon can then be started by executing it as follows:

```
./desktoptransporterd
```

If you supply the `-h` or `-help` switch, the daemon will print some brief usage information before it exits. To make the daemon detach from your terminal (daemonize) when it starts, supply it with the `-daemon` switch.

Keep in mind that to prevent the daemon from exiting immediately, you must disable the [Preferences](#) setting that unshares desktops if neither the menu extra nor the main application is running. Besides using the Desktop Transporter application, you can also change this setting from the command line (the following command should be all on one line):

```
defaults write  
com.danielstoedle.DesktopTransporter  
share_only_when_running -int 0
```

CONFIGURING THE DAEMON

The daemon is configured by connecting to it, usually using a telnet client.

CONNECTING TO THE DAEMON

To connect to the daemon, you will first need to know its port number. To determine the daemon's port number, you can use the 'lsof' command. 'lsof' is a command that lists the open files on your computer, including sockets. We're only interested in TCP sockets in listen mode, so to discover the daemon's control socket, type the following on the command line:

```
lsof -iTCP@localhost | grep LISTEN | grep desktop
```

You should see output similar to this:

```
desktoptr 4268 daniels 4u IPv4 0x052123a0 0t0  
TCP localhost:61404 (LISTEN)
```

The important part is the port number, which is the number located after the colon (example: 'localhost:number'). Take this number, then connect to it using a telnet client as follows:

```
telnet localhost <port number>
```

Replace <port number> with the port number you discovered in the previous step. If all goes well, you should be connected.

AUTHENTICATING TO THE DAEMON

Now, before the daemon will allow you to change or view any settings, you must authenticate to it. To do this, you will need to know the authentication key required by the daemon. This is an additional line of security. The key is stored in Desktop Transporter's preferences file, and is accessible from the command line:

```
defaults read  
com.danielstoedle.DesktopTransporter  
local_authentication_key
```

Executing this command should produce an authentication key, assuming that either Desktop Transporter or the daemon is running or has been run once before. A typical key looks like this:
'AB8E848F-AD3A-11DF-862D-00145622368C.' Now, to authenticate to the daemon, enter the following in your telnet session to the daemon, and then press return:

```
authenticate AB8E848F-AD3A-11DF-862D-00145622368C
```


Naturally, you should substitute the key given above with the key you have just extracted from Desktop Transporter's preferences. Once this is done, the daemon should respond with a message stating that authentication was successful.

Note: The authentication key is different from the password you can set for protecting access to your desktops.

TALKING TO THE DAEMON

At this point, you can issue any other command supported by the daemon. We have listed the available commands and their parameters (if any) in a [separate section](#).

DAEMON COMMAND REFERENCE

CHANGING SETTINGS

Use the following commands to authenticate to the daemon and to adjust the settings to your needs.

- *authenticate <key>*: Authenticate to the daemon using the given key.
- *set-depth <depth>*: Configure the number of colors shared desktops are shared in. Valid values are 8 (256 colors), 16 (thousands of colors), and 32 (millions of colors).
- *set-use-compression <flag>*: Toggle the use of compression on or off. Valid values are either 1 or 0 for compression on and off, respectively.
- *set-advertise-displays <flag>*: Turn Bonjour advertising of desktops on or off, by setting flag to either 1 or 0.
- *set-disable-preview <flag>*: Enable or disable previews.
- *set-allow-interaction <flag>*: Allow or disallow interaction with shared desktops.
- *set-password <string>*: Set the password for accessing desktops to the given string. Note that leading spaces will not be part

of the password. To set an empty password, just execute the `set-password` command with an empty string.

- *set-bonjour-name <string>*: Set the name used to advertise the desktop to the given string. Leading spaces will not be part of the name, but are ignored.
- *exit*: Close the control connection. The daemon will continue to run after you disconnect.

SHARING YOUR DESKTOPS

Use the following commands to share or unshare desktops.

- *get-displays*: Returns a list of IDs for all desktops ('displays') that can be shared or unshared. You use the IDs returned by this command to share and unshare desktops.
- *share <id>*: Shares the desktop with the given ID. The ID must be one of the IDs returned by the `get-displays` command. Other IDs are ignored.
- *unshare <id>*: Unshared the desktop with the given ID.

GETTING STATISTICS

Use the following commands to retrieve statistics.

- *get-depth*: Returns the current sharing depth.
- *get-use-compression*: Returns whether compression is enabled or disabled.
- *get-advertise-displays*: Returns whether desktop advertisements over Bonjour are enabled or disabled.
- *get-disable-preview*: Returns whether previews are disabled or not.
- *get-allow-interaction*: Returns whether others are allowed to interact or not.
- *get-bonjour-name*: Returns the current name under which desktops are published.
- *get-shared-display-count*: Returns the number of currently shared desktops.
- *get-num-subscribers*: Returns the number of currently connected users.
- *get-compression-savings*: Returns the current compression savings.
- *get-peak-bandwidth*: Returns the current peak bandwidth in and out.

- *get-current-bandwidth*: Returns the current bandwidth usage.
- *get-total-bandwidth*: Returns the total bandwidth consumption.

OTHER PRODUCTS

At a Glance	71
DEVONthink	73
DEVONagent	75
DEVONnote	78
PhotoStickies	80
Desktop Transporter	81
Needful Things	83

Besides Desktop Transporter, DEVONtechnologies publishes a number of other commercial, shareware, and freeware applications, and services that you may be interested in.

AT A GLANCE

DEVONtechnologies is focused on developing innovative applications for finding, storing, and organizing information. Our main objective is to make complex yet flexible technology that is both easy to use and lightning fast.

- [DEVONthink](#)
- [DEVONagent](#)
- [DEVONnote](#)

All applications are based on the DEVONtechnology, a powerful and solid core unique to DEVONtechnologies. DEVONthink, DEVONnote, and DEVONagent are only the first of many more DEVONtechnology-applications yet to come.

Also, we publish and distribute useful shareware and freeware applications that help you in your everyday work with your Mac.

- [Desktop Transporter](#)
- [PhotoStickies](#)
- [Freeware applications and Services](#)

NEWSLETTER & FORUM

Would you like DEVONtechnologies to keep you informed about updates and new product releases? [Subscribe to the newsletter.](#)

And don't forget to have a look at our very lively [user forum](#) , where users of all skill levels meet to discuss our applications, talk about our technology, and exchange tips and tricks for DEVONthink & Co.

DEVONTHINK

Make the dream of the paperless office come true with DEVONthink and keep all your text and RTF files, scanned documents, notes, emails, images, chat logs, bookmarks, and multimedia files together in one simple to use database. DEVONthink allows you to integrate both local documents and live content from the Internet, keeping all project- related information stored in one easy-to-access place.

WHY DEVONTHINK?

DEVONthink not only stores documents, it also facilitates editing, analyzing, organizing, finding, and archiving your documents with its flexible work environment, powerful organization tools, and built-in AI architecture.

INTEGRATED WORKSPACE

Unlike Mac OS X's Finder, DEVONthink provides an integrated work environment with all the tools you need for working with information of all kinds, from simple text to PDFs and multimedia files. DEVONthink

can intelligently assist you with filing documents, finding similar files, or searching the database, saving you the trouble of having to manually manage thousands of files.

As a native Mac application, DEVONthink is also tightly integrated with the Mac OS X operating system and its frameworks. It provides a dock menu, Services menu commands, and even makes heavy use of the Safari web browser engine and Mac OS X 10.4 Tiger's advanced PDF library.

A PAPERLESS LIFE

DEVONthink Pro Office comes with a number of 'paperless office' functions not present in other editions of DEVONthink:

- Advanced email archiving
- Scanner support including optical character recognition and special support for the Fujitsu ScanSnap
- Integrated Web server for sharing information with other users

[Click here to read more about DEVONthink.](#)

DEVONAGENT

DEVONagent overcomes all the shortcomings that make Google & Co. such a pain to use for serious research projects. With more than 130 plug-ins for popular search engines, DEVONagent has scientific databases and research tools, and predefined search sets that you can use right away with amazing results. The application also has a clean, easy-to-use user interface. All this and more make DEVONagent the number one tool for finding information on the web with a Mac.

WHY DEVONAGENT

DEVONagent is much more than just an interface for web search engines; it helps you find, collect, and organize information with a powerful and flexible search architecture. It also has a simple to use built-in archive, and tight integration with DEVONthink. DEVONagent creates summaries, acts as a fast and lean web browser, and shows all items of interest in a separate drawer. DEVONagent is the easiest way to look for information on the web.

DEVONTHINK COMPANION

DEVONagent is the perfect extension to your DEVONthink database. With DEVONagent you can save found information directly to your database as plain or rich text, as a web archive, or as a PDF—all with a single click of your mouse. You can then use DEVONthink's intelligence to organize this newly collected data conveniently and quickly.

WHAT YOU CAN USE IT FOR

There are many different ways to use DEVONagent and to integrate it into your workflow. Some examples include:

- Journalists, who use Desktop Transporter to collect hot news, and who use copy-and-paste to transfer the summary to the word processing program of their choice. "See also" and DEVONagent's intelligent filters also help journalists eliminate junk information and/or duplicate or irrelevant pages on-the-fly.
- Analysts, who need to stay up-to-date with everything that happens in their industry. With DEVONagent they define their own search sets that return exactly what they're interested in, storing the key information in the integrated archive.

- Scientists and students, who directly access specialized databases, scan important websites, and receive relevant news via RSS. These users then transfer the most interesting articles as web archive, plain text, RTF, or PDF files into DEVONthink with a single click of the mouse.
- Lawyers, who wish to stay up-to-date with new laws, precedence setting cases and interpretations, and with their main clients. DEVONagent's scheduler does this automatically, letting the lawyers concentrate on their work, instead of searching the web for information.
- Home users, who are interested in genealogical research, finding desktop pictures, searching for long-lost friends, or simply using DEVONagent as a high-end interface for Google and MSN Search.

[Click here to read more about DEVONagent.](#)

DEVONNOTE

DEVONnote helps you take notes and keep them organized. It keeps all your ideas, documents, important information, and even your web browser's bookmarks in one single, accessible place. DEVONnote supports you with professional, easy-to-use features, and helps create structure out of chaos with its unique AI functions.

DEVONnote is the most sophisticated notepad application for Mac OS X, and the only one that uses AI (artificial intelligence) instead of relying on you organizing your data completely manually.

WHY DEVONNOTE?

DEVONnote was designed with the typical Mac user in mind—a user who is:

- Creative
- Savvy (whether at work or at home)
- Desiring quality software

Consequently, DEVONnote comes with a clean, easy-to-use interface that gives you all the tools you need in a familiar Mac-like package. Even the most complex AI functions are just »buttons«, meaning one simple click can send DEVONnote into action, digging through all of your data to find a place for your latest note, or to show you all your ideas and concepts that are similar to the one you've just selected.

BRAIN FOOD INCLUDED

Of course, creative people don't just 'have thoughts', they often need new inspiration, too. We understand that, and that's the reason why DEVONnote comes with a complete Safari-based web browser and solid, but flexible, bookmark-managing capabilities. With DEVONnote, you can browse your favourite websites, then clip and save the most important information directly to your DEVONnote notebook.

But, of course, life is not just work! Use DEVONnote to watch and organize your favorite webcams, directly within your notepad.

[Click here to read more about DEVONnote.](#)

PHOTOSTICKIES

PhotoStickies puts all your favorite pictures on your desktop, as stickies, floating or even borderless. Sticky pictures may reside on your computer, or on the Internet. PhotoStickies also displays live webcams on your desktop, updates them automatically, and even records them like a VCR.

Key features:

- Displays all image formats supported by Mac OS X
- Displays local images, pictures located on the Web or webcams
- Shows images as stickies or as desktop wallpaper
- Many live effects, e.g. alpha channels, transparency, color corrections
- Savable states
- Internet-based list of new webcams
- Can run as a menu extra

[Click here to read more about PhotoStickies.](#)

DESKTOP TRANSPORTER

Connect to any Mac that shares its desktop, and control it from your machine. Switch between all screens attached to shared Macs and use copy/paste to transfer text and graphics between the local and the remote machine. Bonjour support makes it easy to discover shared machines on your local area network, and password protection keeps your data away from unauthorized eyes.

What you can do with Desktop Transporter:

- Find Macs that share their desktop(s) via Bonjour. Password protect your Macs to keep them secure.
- A Mac like interface with a convenient menu extra makes sharing Macs and controlling them easy.
- Display the desktops of remote Macs either in scalable windows, or switch to fullscreen mode to work completely remotely.

The top features at a glance:

- Share your Macs on your local area network or on the Internet
- Discover shared Macs via Bonjour
- Access all screens connected to a shared Mac

- Fullscreen mode
- Access other user accounts without using Fast User Switching
- Copy and paste of text and graphics
- Use a non-US keyboard (unlike, e.g., with VNC)
- Mac-like user interface
- Can run as a menu extra

[Click here to read more about Desktop Transporter.](#)

NEEDFUL THINGS

EASYFIND

As an alternative to-or supplement of-Sherlock, EasyFind finds files, folders, or contents in any file without the need for indexing. This is especially useful if you are tired of slow or impossible indexing, outdated or corrupted indices, or if you are just looking for missing features like case sensitive or insensitive search, Boolean operators, wildcards, or searching for phrases. In addition, EasyFind uses multi-threading and is therefore very responsive, even with multiple search processes running. The application provides contextual menus and Mac OS X Services, and displays the location of each item in a separate column for a better overview. EasyFind uses little memory, supports drag-and-drop and the clipboard, and optionally finds invisible items or items within packages.

THUMBSUP

ThumbsUp is a simple, drag-and-drop based utility designed to create thumbnail images from batches of pictures. (The application supports all Mac OS X and QuickTime image formats, including PDF documents.) Image size, quality, sharpening, and antialiasing are configurable, and

images can be scaled by percentage or limited to a maximum size. With a scaling of 100 percent, ThumbsUp may be used as an ultra-fast, comfortable image converter.

Use ThumbsUp to quickly create thumbnails, e.g., for using on your Web site or for sending by email.

XMENU

XMenu brings back Mac OS 9's Apple menu back from the dead, adding its functionality to Mac OS X. One or more global menus to the right side of the menu bar let you easily access your preferred applications, folders (and subfolders), documents and files. Furthermore, there's no explicit need for a configuration (like creating lots of folders and aliases or adding items to user-defined setups)-just activate the menus you like: Applications, Developer Applications, Home, Documents, or User-Defined (like the old Apple menu found in Mac OS 9).

FREWARE SERVICES

Besides the full-blown freeware applications, DEVONtechnologies also offers a variety of useful services that extend the functionality of Mac OS X's Services menu and that allow Cocoa applications like TextEdit or DEVONthink to open Microsoft Word documents as plain text files, or PDFs as RTF files. These services include:

- AntiWordService
- BlueService
- CalcService
- HotService
- PDF2RTFService
- WordService

Also, HotService installs a second Services menu right in the top level of the menu bar, next to the Window menu. Note: This Services menu is only visible in true Cocoa applications such as TextEdit, Mail, or DEVONtechnologies' applications.

[Click here to read more about DEVONtechnologies' freeware applications and services.](#)