

## CONTENTS

Use the scroll bar to see entries that are not currently visible.

### The Legal Stuff

[Disclaimer](#)

[Licence \(Non Registered Users\)](#)

[Licence \(Registered Users\)](#)

[How To Register](#)

[Copyright](#)

### Installing J.Q.L. Lottery

### Using J.Q.L. Lottery

[The Lottery Window](#)

[Enter Winning Numbers](#)

[Graph of Winning Numbers](#)

[View Previous Predictions](#)

[Print](#)

[Calendar](#)

[Enter Own Numbers](#)

### Miscellaneous

[Support](#)

[The File List](#)

[Manually Expand The Files](#)

## **THE LEGAL STUFF**

### **J.Q.L. LOTTERY FOR WINDOWS**

**©1994 John Q. Lavelle**

**All Rights Reserved**

Use the scroll bar to see entries that are not currently visible.

All Users of J.Q.L. Lottery for Windows must accept the Disclaimer and Licence. If you do not accept the Disclaimer and Licence, do not use J.Q.L. Lottery for Windows!

[Disclaimer](#)

[Licence \(Non Registered Users\)](#)

[Licence \(Registered Users\)](#)

[How To Register](#)

[Copyright](#)

Distributed by:

**Springsoft,**

Springfield House, LLanfynydd, Wrexham,  
Clwyd, LL11 5HW, United Kingdom.

Telephone: 01352 770049 Fax: 01352 770816

International Tel: +44 1352 770049 Fax +44 1352 770816

CompuServe 100273,2006 Internet David@Sprsoft.Demon.co.uk

## DISCLAIMER

The Licence agreement and warranty shall be construed, interpreted and governed by the Laws of England and Wales. You may have other rights which may vary from one Country and or State to another.

**"J.Q.L. LOTTERY FOR WINDOWS IS SUPPLIED 'AS IS' WITHOUT ANY WARRANTY OF ANY KIND. JOHN Q. LAVELLE SPECIFICALLY DISCLAIMS ALL WARRANTIES, EXPRESS OR IMPLIED, INCLUDING BUT NOT LIMITED TO IMPLIED WARRANTIES OF MERCHANTABILITY AND FITNESS FOR A PARTICULAR PURPOSE. WITH RESPECT TO THE DISK AND THE PROGRAMS REPRODUCED ON THE DISK, JOHN Q. LAVELLE SHALL HAVE NO LIABILITY WITH RESPECT TO ANY LOSS OR DAMAGE DIRECTLY OR INDIRECTLY ARISING OUT OF THE USE OF THE DISK OR ANY PROGRAMS REPRODUCED ON THE DISK, EVEN IF THE AUTHOR HAS BEEN ADVISED OF THE POSSIBILITY OF SUCH DAMAGES. WITHOUT LIMITING THE FOREGOING, JOHN Q. LAVELLE SHALL NOT BE LIABLE FOR ANY LOSS OF PROFIT, INTERRUPTION OF BUSINESS, DAMAGE TO EQUIPMENT OR DATA, INTERRUPTION OF OPERATIONS OR ANY OTHER COMMERCIAL DAMAGE, INCLUDING BUT NOT LIMITED TO DIRECT, INDIRECT, SPECIAL, INCIDENTAL, CONSEQUENTIAL OR OTHER DAMAGES."**

[The Legal Stuff](#)

## LICENCE (Non-Registered Users)

J.Q.L. LOTTERY for Windows is a Shareware program, and is provided free of charge to users for evaluation.

- a) You may **not** use the Predictions to complete a Lottery Game or place a wager of any kind. You may only use the Predictions to check their accuracy against the results published in the media (Press, Television, Radio).
- b) You may **not** give the Predictions to anyone.
- c) You may share the program with your friends, colleagues and acquaintances, but please do not give it away altered in any way.
- d) If you find J.Q.L. Lottery for Windows useful and you are continuing to use it after a trial period of **30 days**, you must make a registration payment of UK£12.99 + [p&p](#) (see the Registration Form -LOTTREG.TXT for more details) to:

**Springsoft,**  
Springfield House, LLanfynydd, Wrexham,  
Clwyd, LL11 5HW, United Kingdom.  
Telephone: 01352 770049 Fax: 01352 770816  
International Tel: +44 1352 770049 Fax +44 1352 770816  
CompuServe 100273,2006 Internet [David@Sprsoft.Demon.co.uk](mailto:David@Sprsoft.Demon.co.uk)

**Postage and Packing:**

<b>United Kingdom:</b>	<b>£1.95 (Pounds Sterling)</b>
<b>EC:</b>	<b>£3.00 (Pounds Sterling)</b>
<b>Rest of the World:</b>	<b>£4.00 (Pounds Sterling)</b>

## LICENCE (Registered Users)

- a) You may use the Predictions to complete a Lottery game or place a wager, so long as it is for your own personal use.
- b) You may not give the Predictions to anyone.
- c) You may not transfer the License to anyone without the express permission of the author. Please note that the author will give permission to transfer the License. It's no 'big deal', just give me a ring.
- d) This License Agreement ("License") permits you to use one copy of J.Q.L. LOTTERY for WINDOWS ("Software") on any single computer, provided the Software is in use on only one computer at any time. The Site License permits you to have as many copies of the Software in use as you have Licenses. The Software is "in use" on a computer when it is loaded into the temporary memory or installed into permanent memory on that computer, except that a copy installed on a network server for the sole purpose of distribution to other computers is not "in use".

If the anticipated number of users of the Software will exceed the number of applicable Licenses, then you must have a reasonable process in place to assure that the number of persons using the Software concurrently does not exceed the number of Licenses.

If the Software is permanently installed on the Hard Disk or other storage device of the computer (other than the network server) and one person uses that computer more than 50% of the time it is in use, then that person may also use the Software on a portable or home computer.

- e) You may share the program with your friends, colleagues and acquaintances, but please do not give it away altered in any way. *You may **not** give your Registration Details away with the program.*

J.Q.L. Lottery for Windows is distributed by:

**Springsoft,**  
Springfield House, LLanfynydd, Wrexham,  
Clwyd, LL11 5HW, United Kingdom.  
Telephone: 01352 770049 Fax: 01352 770816  
International Tel: +44 1352 770049 Fax +44 1352 770816  
CompuServe 100273,2006 Internet David@Sprsoft.Demon.co.uk

## COPYRIGHT

The software and associated written materials are the copyright of John Q. Lavelle unless otherwise stated and are protected by the Laws of England and Wales, and other International Treaties. You must treat the software like any other copyrighted material. You may not copy any of the written materials which accompany the software.

You acknowledge that the licence agreement is a limited one and in no way shall be construed to provide you an express or an implied licence to any of John Q. Lavelle's Intellectual Property Rights and in no way confers to you, or anyone else, any right, title or interest whatsoever to John Q. Lavelle's Intellectual Property Rights in the software and associated written materials or the removable disks.

You may not rent or lease the Software. You may not reverse engineer, disassemble or decompile the Software.

Microsoft, Windows, Visual Basic and MS-DOS are registered trademarks of Microsoft Corporation. All other trademarks, etc., acknowledged.

Microsoft Corporation: VBRUN300.DLL, EXPAND.EXE, LZEXPAND.EXE, CTL3DV2.DLL, GRID.VBX, COMMDLG.DLL, CMDIALOG.VBX, VER.DLL

Stefan Olson: SETUP.EXE (Normally known as INSTALL.EXE.)

John Q. Lavelle: J.Q.L. LOTTERY (LOTTERY.EXE, LOTTERY.HLP, PRODINFO.TXT, and the files created by J.Q.L. Lottery).

All other Trademarks and Copyrights acknowledged.

[The Legal Stuff](#)

## INSTALLING J.Q.L. LOTTERY FOR WINDOWS.

First you need to set up J.Q.L. Lottery to run on your computer.

Microsoft Windows version 3.1 or greater (from now on referred to as Windows) must be installed on your computer. For information on installing and using Windows, please see your Windows documentation.

Switch on your computer and monitor.

### FROM WINDOWS

1. Start Windows. If windows is not running, type **WIN** at the command prompt (the C:> prompt) and press ENTER.
2. Open the Windows Program Manager window. If the Windows Program Manager window is not open, double-click on the Program Manager icon, (or press CTRL+ESC to display the Windows Task List, and press the DOWN ARROW or UP ARROW key until the Program Manager item is highlighted, press ENTER to select the item).
3. Insert the J.Q.L. Lottery program disk into your floppy disk drive (if you are using a 5 1/4 inch disk or a drive that has a door, then close the door).
4. From the Program Manager window, click on the word **FILE** to open the menu and click on **RUN**, (or press ALT+F, and press the R key).
5. In the Command Line box, type **A:\SETUP**.  
(If you are using a different drive to drive **A:**, then type the correct drive letter instead of "**A:**". e.g. if you are using drive **B:**, then type **B:\SETUP**).
6. Click on the OK button or press ENTER.
7. Once the Setup Program has loaded, a series of instructions will appear on your screen, just select the options which best match your system and requirements.

Note the setup program expects to find your Windows SYSTEM directory and your WINDOWS directory on the same drive as the JQLLOT directory. If you want to place Lottery on a different drive you will need to edit the file INSTALL.INF and change all the entries ..\WINDOWS and ..\WINDOWS\SYSTEM to point to the correct drive and directory (i.e. C:\WINDOWS\SYSTEM). The INSTALL.INF file already has C:\WINDOWS and C:\WINDOWS\SYSTEM [REMed Out](#) in the appropriate places should you wish to make the changes.

8. J.Q.L. Lottery will create its own Program Group in your Program Manager window.
9. If you encounter problems running Lottery make sure VBRUN300.DLL and CTL3DV2.DLL are in your SYSTEM directory.

If the Problem still persists then lower your screen resolution to either 800 x 600 256 colours or to 640 x 480 16 colours (i.e. the "bog standard" VGA Windows driver).

**Note.**



If VBRUN300.DLL or CTL3DV2.DLL are not in your Windows SYSTEM directory then they must be copied across otherwise J.Q.L. Lottery will not run.

From DOS type:

**COPY C:\JQLLOT\VBRUN300.DLL C:\WINDOWS\SYSTEM\VBRUN300.DLL**

**COPY C:\JQLLOT\CTL3DV2.DLL C:\WINDOWS\SYSTEM\CTL3DV2.DLL**

(each of these commands should be all on one line)

## REMed Out

The term REMed Out stands for REMark which is a comment or non-executable program line.

In INSTALL.INF the semi-colon character is used to denote a REM statement. To change the entries in INSTALL.INF see the example below

### FROM

```
[app.copy.min]
    #app.main, 0:
    #app.sys,  0:..\WINDOWS\SYSTEM
    #app.win,  0:..\WINDOWS
;   #app.sys, 0:C:\WINDOWS\SYSTEM
;   #app.win, 0:C:\WINDOWS
```

```
[app.copy.full]
    #app.main, 0:
    #app.sys,  0:..\WINDOWS\SYSTEM
    #app.win,  0:..\WINDOWS
;   #app.sys, 0:C:\WINDOWS\SYSTEM
;   #app.win, 0:C:\WINDOWS
```

### TO

```
[app.copy.min]
    #app.main, 0:
;   #app.sys,  0:..\WINDOWS\SYSTEM
    #app.sys,  0:C:\WINDOWS\SYSTEM
;   #app.win,  0:..\WINDOWS
    #app.win,  0:C:\WINDOWS
```

```
[app.copy.full]
    #app.main, 0:
;   #app.sys,  0:..\WINDOWS\SYSTEM
    #app.sys,  0:C:\WINDOWS\SYSTEM
;   #app.win,  0:..\WINDOWS
    #app.win,  0:C:\WINDOWS
```

## How To Register

There are two main ways to Register your copy of J.Q.L. Lottery for Windows.

- 1) Complete the Registration Form and either Fax it or Mail it to Springsoft at the address below. Springsoft will then send you your Password.
- 2) Telephone Springsoft with your credit card details and you will receive your Password over the telephone and be able to Register your copy immediately.

### Entering Your Registration Details

#### **Springsoft**

Springfield House, LLanfynydd, Wrexham,  
Clwyd, LL11 5HW, United Kingdom.

UK Telephone: 01352 770049 Fax: 01352 770816

International Tel: +44 1352 770049 Fax +44 1352 770816

CompuServe 100273,2006 Internet David@Sprsoft.Demon.co.uk

## Entering Your Registration Details

If the J.Q.L. Lottery Registration Window is not visible, click on **Help** and then on **Register**, this will display the J.Q.L. Registration Window. Now click on the button marked **Register**, this will display the Register Window shown below.



The image shows a dialog box titled "Registration" with a blue header bar. The dialog box has a light gray background and contains two text input fields. The first field is labeled "Name" and the second is labeled "Password". Below the input fields are two buttons: "OK" and "Cancel".

Click on the part of the window you require further information on

**Name**

Enter your Name here **exactly** as you gave it to Springsoft.

**Password**

Enter your Password here.

## **OK Button**

Click on this button to accept the details

## Cancel Button

Click on this button to reject the details.



## Using J.Q.L. Lottery for Windows

### [The Lottery Window](#)

1. Switch on your computer and monitor.
2. Start Windows. If Windows is not running, type **WIN** at the command prompt (the C:> prompt) and press ENTER. (You can also start J.Q.L. Lottery from DOS by typing \ **JQLLOTT\LOTTERY** and pressing ENTER. This automatically starts Windows and loads J.Q.L. Lottery.)
3. Open the Program Manager window. If the Windows Program Manager window is not open, then double-click on the Program Manager icon, (or press CTRL+ESC to display the Windows Task List, then press the DOWN ARROW or UP ARROW key until the Program Manager item is highlighted, then press ENTER).
4. From the Program Manager window double-click on the J.Q.L. Lottery Program Group, (or press CTRL+TAB until the J.Q.L. Lottery Program Group is highlighted) Click on the J.Q.L. Lottery icon, (or use the ARROW keys to highlight the J.Q.L. Lottery 2 icon and then press ENTER). The J.Q.L. Lottery program window will open. If you haven't registered then J.Q.L. Lottery Registration Window is displayed. Click on Register to Register, on Order Form to display the Order Form or on Continue to Use UnRegistered to use the program during the 30 day evaluation period.
5. To start a new lottery form click on FILE and on NEW (or press ALT+F then ALT+N).
6. To open a previous Lottery Form click on FILE and on OPEN (or press ALT+F then ALT+N), select the Form from the Common Dialog Box. For more information on Common Dialog Boxes see your Microsoft Windows documentation.

### [The Lottery Window](#)

#### [Enter Winning Numbers](#)

#### [Graph of Winning Numbers](#)

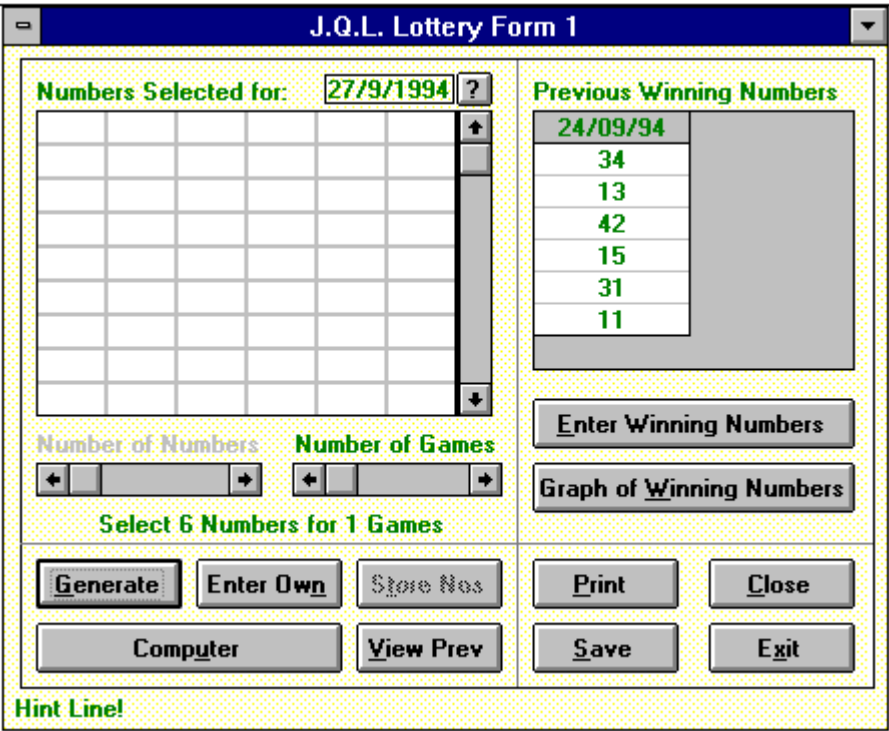
#### [View Previous Predictions](#)

#### [Print](#)

#### [Calendar](#)

#### [Enter Own Numbers](#)

# The Lottery Window



Click on the part of the window you require further information on

[Using J.Q.L. Lottery](#)

## Numbers Selected

The Numbers you have selected are displayed in this Grid. Press [Store Nos](#) to confirm that you wish to use them.

## **Numbers Selected Scroll Bar**

Use this Scroll Bar to scroll up and down through the Numbers Selected

## **Previous Winning Numbers**

The Previous Winning Numbers are displayed here with the date of the draw at the top. Use the Scroll Bars to see more dates and/or numbers

### **Number of Numbers Label**

When you have chosen the Number of Numbers that your lottery uses, and Saved the Lottery Form, this Caption is displayed in gray. This signifies that you cannot change the Number of Numbers in the Lottery.

### **Number of Numbers**

Select the number of Numbers that your Lottery uses by moving the slider to the Left or Right. You can select a number between 4 and 10.

Once you have Saved the Lottery Form then the Number of Numbers is locked and the label above is displayed in gray.

## Number of Games

J.Q.L. Allows a maximum of 32,000 numbers for each lottery draw. As this is a very large number it is split down into sections of between 1 and 50 games. Use the slider to select how many games you wish numbers for.

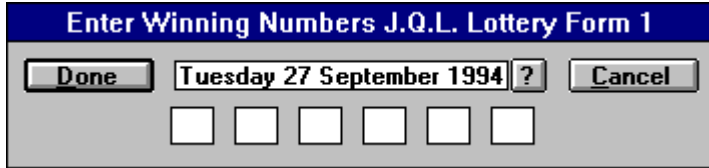


## Game Information

This Caption reminds you of how many numbers are required for how many games

## Enter Winning Numbers

Use this button to enter the Winning Numbers drawn in the lottery.



Enter Winning Numbers J.Q.L. Lottery Form 1

Done Tuesday 27 September 1994 ? Cancel

Click on the part of the window you require further information on

## Done Button

Click on this button when you have entered all the Numbers.

**Date of Draw**

Change this date to show the Date of the Draw

## **Cancel Button**

Click on this button to Cancel the entering of the Numbers.

Enter the Winning numbers in these boxes in the order that they were drawn.

The number of boxes displayed will correspond to the Number of Numbers for the Lottery.

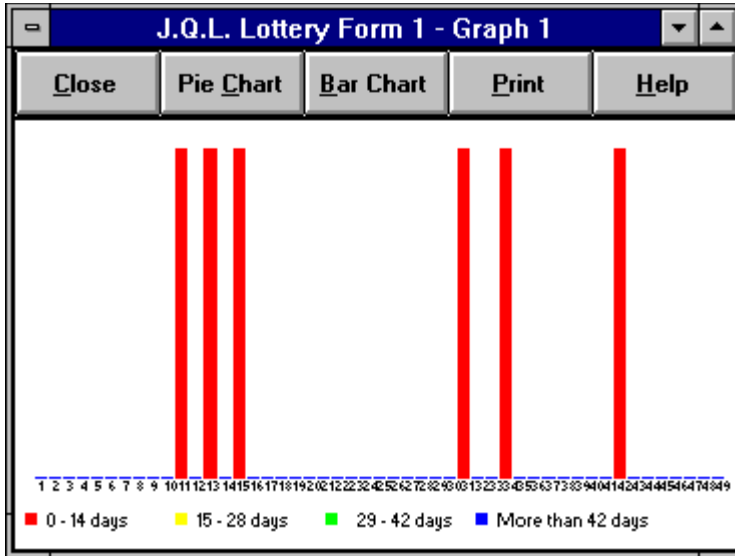
The Range of numbers allowed is from 1 to 49 inclusive.

**Today**

Click on this button to display the current month and year.

## Graph of Winning Numbers

Use this button to display a graph of all the Winning Numbers you have entered so far. If you have not entered any Winning Numbers then this button is grayed out and not available.



Click on the part of the window you require further information on.



## **Pie Chart**

Click on this Button to display a Pie Chart

## Bar Chart (default)

Click on this Button to display a Bar Chart

**Print**

Click on this Button to Print out the Graph shown

## Help

Click on this Button to display this Help File

## The Graph

The Number of Numbers (1 to 49) along the bottom (X axis) and the Total number of draws down the side (Y axis).

The numbers are colour coded to show the number of days since the Number has been drawn as a Winning Number.

### **Date of the Draw**

Enter the date of the Lottery draw in this Window by clicking on the [?](#) button and then on the date required.

## Hint Line

Hints of what the various buttons and windows do appear here.

**Exit**

Click on this button to Exit J.Q.L. Lottery.

If you have made changes to the Lottery Form they will be saved.



## Save

Click on this button to save the Lottery Form. If you have not previously saved the Form you will be asked for a file name and a name for the lottery.

## Computer

This Button predicts numbers for the selected number of games based on the Previous Winning Numbers. Remember to press the [Store Nos](#) button to Store the numbers.

If no Winning Numbers have been entered then this button is grayed out and not available.

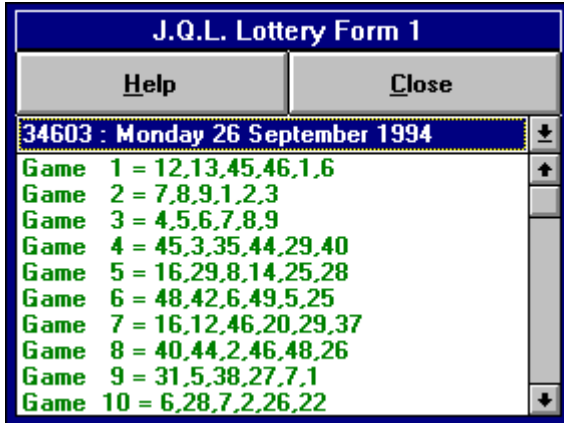
## **Generate**

This button generates numbers for the selected number of Games. Remember to press the [Store Nos](#) button to store the numbers.

## View Previous Predictions

This button displays a windows where you can view all the previous predictions you have made.

Note you must have Stored or Saved the predictions before they can be displayed in this window.



Click on the part of the window you require further information on

**Lottery Date**

The date of the Previous Predictions.

Click on this Button to show the list of dates for which there are stored Predictions.

## Scroll Bar

Use the slider to view more of the Predictions.

## **The Display**

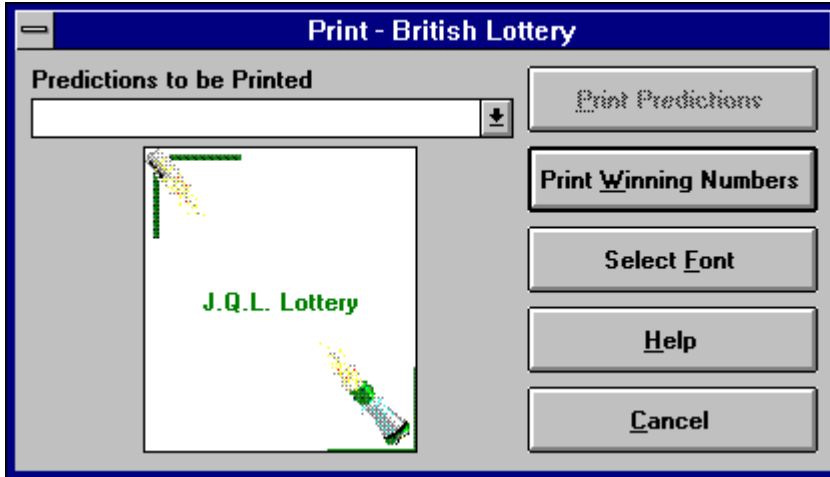
The Predictions shown in the order there were entered.



## Print

Press this button to display the Print window shown below.

This option is only available in the Registered Version



Click on the part of the window you require further information on.

**List of Dates of Previous Predictions.**

Select the date you require (the number at the beginning is an index number).

If there are none then this is empty

## **Print Prediction**

Will print out the Predictions for the date shown. Grayed out if there are no predictions.

**Print Winning Numbers**

Print out the all the Winning Numbers. Grayed out if there are none.

## Select Font

Allows you to choose a font and style.

It is recommended that you leave this set to the default setting of Arial and 10pt.

**Cancel**

Close the print window.

**Logo!**

Used to fill up some space.

## Calendar

Use this calendar to set the date required.

To activate the Calendar press on the button marked with a ?.

To select a date, click on the date.



Click on the part of the window you require further information on



## **Month and Year**

Shows the Month and Year selected

### **Dates for the Selected Month and Year**

The dates for the current month and year are displayed. If Today's date occurs in the month and year displayed then it is shown in blue.

To select a date click on that date.

## **Change Month**

Click on the left or right arrow to change the month.

## **Change Year**

Click on the left or right arrow to change the year.

## Enter Your Own Numbers

Press this button to enter your own numbers. Make sure that you have set the Number of Numbers and the Number of Games before you do so.

Enter Your Own Numbers						
<input type="button" value="Done"/>		<input type="button" value="Cancel"/>				
	1	2	3	4	5	6
Game 1	<input type="text"/>	<input type="text"/>	<input type="text"/>	<input type="text"/>	<input type="text"/>	<input type="text"/>
Game 2	<input type="text"/>	<input type="text"/>	<input type="text"/>	<input type="text"/>	<input type="text"/>	<input type="text"/>
Game 3	<input type="text"/>	<input type="text"/>	<input type="text"/>	<input type="text"/>	<input type="text"/>	<input type="text"/>
Game 4	<input type="text"/>	<input type="text"/>	<input type="text"/>	<input type="text"/>	<input type="text"/>	<input type="text"/>
Game 5	<input type="text"/>	<input type="text"/>	<input type="text"/>	<input type="text"/>	<input type="text"/>	<input type="text"/>

Click on the part of the window you require further information on

[Using J.Q.L. Lottery](#)

**Close**

Click on this window to Close the window. This does not exit from J.Q.L. Lottery

### **Store Numbers**

Click on this button to store your numbers. If there are no numbers to store it is grayed out and not available.

If you haven't saved your Lottery Form then you will be asked to supply a file name and a name for the lottery.

## Miscellaneous

[Support](#)

[The File List](#)

[Manually Expand The Files](#)



## THE FILES

J.Q.L. Lottery was written in Visual Basic 3.0 (VB for short), and therefore requires the Visual Basic Run-time Dynamic Link Library, VBRUN300.DLL. The 3D Message Boxes require a separate Dynamic Link Library, CTL3DV2.DLL and the Grid displays require a separate Dynamic Link Library, GRID.VBX.

The Setup Program will copy VBRUN300.DLL and CTL3DV2.DLL to your \WINDOWS\SYSTEM directory. Please do not remove these files (even if you remove J.Q.L. Lottery from your system), otherwise J.Q.L. Lottery will not load and an error message will be displayed.

**Do not** move GRID.VBX or CMDIALOG.VBX or COMMDLG.DLL to your \WINDOWS\SYSTEM directory because there are various versions of this files which are not always compatible with each other.

Note for VB Programmers: GRID.VBX is the upgraded version (version number: 03.00.0538) dated 14th June 1993. This version is supposed to stop the previous compatibility and GPF problems.

[List of Files](#)

[Manually Expand Files](#)

## List of Files

File	Description	Directory
LOTTERY.EXE	The Program	JQLLOT
<name>.LOT*	Lottery Form File	JQLLOT
<name>.PIK*	Previous Predictions	JQLLOT
LOTTERY.HLP	The Help File	JQLLOT
VBRUN300.DLL	VB run-time Library	WINDOWS\SYSTEM
CTL3DV2.DLL	3D Library	WINDOWS\SYSTEM
GRID.VBX	Grid Display Library	JQLLOT
README.TXT	How to Load J.Q.L. Lottery	JQLLOT
JQLLOT.DAT	Data File	WINDOWS
PRODINFO.TXT	J.Q.L. Products	JQLLOT
T		
CMDIALOG.VB	Common Dialogue File #1	JQLLOT
X		
COMMDLG.DLL	Common Dialogue File #2	JQLLOT
JQLLOTRY.INI	Initialisation File	WINDOWS

\* These files are created when you run J.Q.L. Lottery.

## Support

**The following Telephone numbers and address are for support only. Do not use these telephone numbers or Email addresses for Registrations or Sales.**

You have *free, unlimited* support. Just dial the Support number given below or contact J.Q.L. on the CompuServe or Internet addresses shown below.

Telephone United Kingdom: 01900 870833  
Telephone International: +44 1900 870833

Mobile Phone United Kingdom: 0370 345081  
Mobile Phone International: +44 370 345081

Fax United Kingdom: 01900 870833  
Fax International: +44 1900 870833

CompuServe: 73062,2642  
Internet: John@J-Q-L.demon.co.uk

### Notes:

01900 is the exchange for Workington\Cockermouth, Cumbria and **not** one of BT's funny numbers!

**Important:** For all Support Calls, you must contact me.

If you get the Answering Machine you **must** phone me back. ***I will not phone you.*** British Telecom's rates make it uneconomic for me to call you and I have no desire to charge for support.

The best time to call is between 11.00 and 12.00 UK time though support is usually available between 10.00 and 23.30 (either GMT or BST depending on the time of year) **7** days a week.

## Manually Expand the Files

Each file can be manually Expanded off the distribution disk if so required. The command for each file (assuming the distribution disk is in drive A: and the destination directory is C:) is:

VBRUN300.DLL -- Interpreter

A:\EXPAND.EXE A:\VBRUN300.DL\_ C:\WINDOWS\SYSTEM\VBRUN300.DLL

COMMDLG.DLL -- For the Standard Dialogue boxes

A:\EXPAND.EXE A:\COMMDLG.DL\_ C:\JQLLOT\COMMDLG.DLL

LOTTERY.EXE -- The Main Program File

A:\EXPAND.EXE A:\LOTTERY.EX\_ C:\JQLLOT\LOTTERY.EXE

GRID.VBX -- The Grid layouts

A:\EXPAND.EXE A:\GRID.VB\_ C:\JQLLOT\GRID.VBX

CMDIALOG.VBX -- For the Standard Dialogue Boxes

A:\EXPAND.EXE A:\CMDIALOG.VB\_ C:\JQLLOT\CMDIALOG.VBX

VER.DLL -- Checks the versions of the files on your system

COPY A:\VER.DLL C:\JQLLOT\VER.DLL

CTL3DV2.DLL -- 3D effects for the message boxes

A:\EXPAND.EXE A:\CTL3DV2.DL\_ C:\WINDOWS\SYSTEM\CTL3DV2.DLL

PRODINFO.TXT -- J.Q.L. Product Information

A:\EXPAND.EXE A:\PRODINFO.TX\_ C:\JQLLOT\PRODINFO.TXT

LOTTERY.HLP -- This Help File

A:\EXPAND.EXE A:\LOTTERY.HL\_ C:\JQLLOT\LOTTERY.HLP

BRITISH.LOT -- The British Lottery File

A:\EXPAND.EXE A:\BRITISH.LO\_ C:\JQLLOT\BRITISH.LOT

JQLLOT.DAT -- The Main Data File

A:\EXPAND.EXE A:\JQLLOT.DA\_ C:\WINDOWS\JQLLOT.DAT

JQLLOTRY.INI -- The .INI File

A:\EXPAND.EXE A:\JQLLOTRY.IN\_ C:\WINDOWS\JQLLOTRY.INI

Use the version of EXPAND.EXE that is on the distribution disk, **not** the version in your DOS directory.

### **Enter Your Own Numbers Grid**

Enter your own numbers into this Grid. Remember to press the [Store Nos](#) button to store the numbers after you have pressed Done.

Notes:

If you are entering more than 5 Games then a scroll bar will be displayed.  
You cannot use the TAB key to move to the next cell as it is used to cycle through the options.

