



Contents

About Micro-Tools

Installation Help Menu

Applications Custom Icons

License Warranty

Registration

A Tool Box Launcher for Windows 3.1


Copyright 1993 by Fred L. Freel
and Micro-Bytes\WordWare

This is a Limited License 30-day Evaluation Version



Thank you for evaluating Micro-Tools. We're sure you will find Tools a valuable, time saving application. Micro-Tools requires that Microsoft's Visual Basic Runtime Module, `VBRUN300.DLL`, be in your system's execution path. Micro-Tools is intended to improve the available real-estate on the Windows Desktop. It is designed to be used in conjunction with Micro-OverHead, another Micro-Bytes\Wordware product. You **do not need** Micro-OverHead for Micro-Tools to be functional. In either VGA or 800x600 Super VGA, there's insufficient space inside Program Manager to have all of the programs you need **at your fingertips**. Many sophisticated software packages include **several** files or **utilities** that are added to a Program Manager Group during installation. To run the **major** program you must double click on it's icon, and it's Group must be **open** in file manager.

Using Tools, you can include all of your **programs** and **utilities** in one **Tool-Box** type launcher, and your Program Manager real-estate can be used for the immediate project at hand. When no

program has been assigned to a Tools Button it will be displayed thus: . If you've assigned a **PIF**, **BAT** or a DOS **EXE** program that does not include an icon, it will be displayed

empty, or thus:



You can use the **Custom Icon** feature to provide an icon for this type of program. Two **different Tools** modules are included in this package; **MTOOLS.EXE** is intended for standard VGA, while **STOOLS.EXE** is intended for use with higher resolution displays. Either will fit neatly under **OverHead's** digital clock/trash can. The VGA version will hold **twenty** programs, the Super-VGA **thirty**.

In the true spirit of Shareware, and to facilitate a complete assessment of the product, this copy of **Tools** is fully functional. You must pay the registration fee if you plan to continue to use **Micro-Tools** after the 30 day evaluation period has **expired**.

Continued enhancement of this program and the development of new products **depends on your support**. Micro-Bytes\WordWare is dedicated to providing you with low cost, high quality shareware software. Every registration helps insure that quality shareware products continue to be a viable option in the software marketplace.

Unlike some Shareware software, this is a fully working version of **Micro-Tools**, but is for **evaluation purposes only**. Shareware software is always provided to the user for evaluation purposes. The user, if satisfied with it's performance, is obligated to pay a registration fee to continue using it. An **unregistered** version of **Micro-Tools** **will not function without ORDER-ME.EXE** resident in **your Windows directory**.

Upon Registration, you will receive notification by mail as to **disabling** the Request for Registration form. You can then delete it from your hard disk, and **save 60+K** of storage space.

Please fill out the Registration Form accessed by clicking on "About Micro-Tools" in **Tools'** Help Menu. The Registration Form is designed for use on VGA displays of **800x600** resolution or better. If you have **lesser** resolution, select **Help with Registration Form** in the Registration Form menu. Fill in the necessary information, then **return** to the original Registration Form. You may then **print** the 800x600 Registration Form. Pricing and mailing information are included on the Registration Form.

The very low price of this software precludes our offering telephone technical support to registered users, but we will try to answer any pertinent correspondence either by mail or via Email. If you need additional information, please refer to the following address:

Fred L. Freel
Micro-Bytes\WordWare
7544 Winnetka Avenue
Winnetka, California 91306
70642, 673 Compuserve
Ffreel, America On Line

Thanks . . . Fred Freel, Micro-Bytes\WordWare

Installation

Installing Micro-Tools is very easy. After you have the files de-compressed from the zip file, we recommend that you create a TOOLS sub-directory for storing it's files.

In File Manager, copy or drag MTOOLS.INI, MTOOLS.HLP and ORDER-ME.EXE into your Windows directory. If ORDER-ME.EXE already exists, check it's date stamp and use the newest version. Then copy THREED.VBX, and DRAGDROP.VBX into your Windows System directory. If any of the VBXs already exist, they need not be over-written if they have similar date stamps. Once these files have been copied to there destination directories, they may be deleted from your TOOLS sub-directory to save disk space.

With File Manager and Program Manager open at the same time, position the target group you've selected or created near the edge of Program Manager, so it will be visible under File Manager. Holding the Control Key down, click on MTOOLS.EXE (and/or STTOOLS.EXE) and MTOOLS.HLP to highlight them. Then, holding the mouse button down on one of the files, drag them into the Program Manager Group.

MTOOLS.INI will function with either MTOOLS.EXE or STTOOLS.EXE. Thus, you may want to configure MTOOLS.EXE first, until you run out of Tools Buttons. Then you can start using STTOOLS.EXE. If you are using Micro-OverHead, you might want to put both OverHead and one of the Tools programs in your Startup Group.

Help Menu



Hypergraphics are used in this graphic of Tools' Help Menu. Click on the Menu item you want information on.

Will change the cursor into a **bold cross**. Use this cursor to select the Button you want to **add a program** to. You may install **new** programs in Buttons that have been **previously** configured.

Applications

Will change the cursor into a **cross-hair**. Use this cursor to select the Button you want to add a **custom icon** to.

Custom Icons

Will toggle Tools' ability to stay "on top" of other windows. Selecting this feature will also affect the default value when Tools is run from Program Manager. When checked, Tools is in the on-top mode.

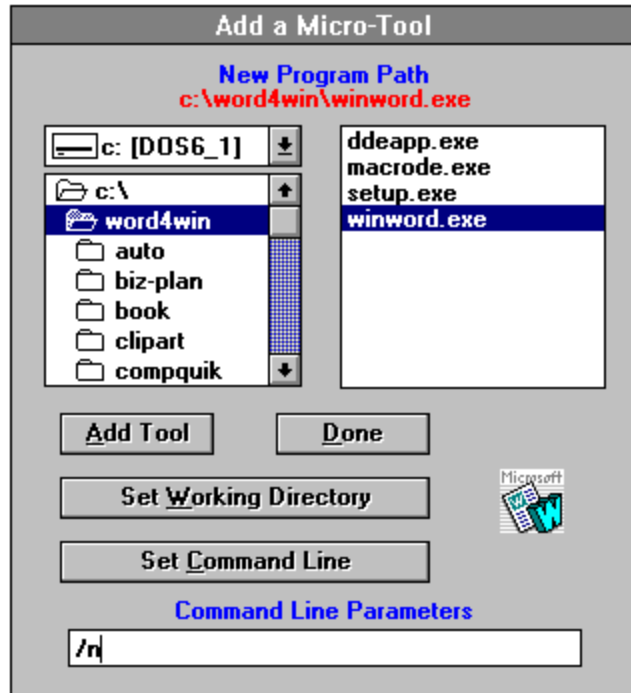
Will **save** the current location as the **default** position for **Tools** to occupy. The right edge of your display, under **OverHead's** clock, is probably the most appropriate location.

Will take you to the [Contents](#) page of this Help File.

Will **run** **ORDER-ME.EXE** for registering Micro-Tools. This option is **not available** with a registered version, where **ORDER-ME.EXE** has been **removed** from your Windows directory.

Will close Micro-Tools.

Adding Applications



Hypergraphics are used in this graphic of Tools' "Add a Micro-Tool" Module. Click on a control or portion of the Module you want information on. Basically, you must select the Program you want to Launch then click on Add Tool, select it's Working Directory, if applicable, then click on Set Working Directory, type in any necessary command line parameters and click on Set Command Line. When finished, click on Done.

Use the **Drive** and **Directory** controls to select the **path** to the program you want to **add**, or the **Working Directory** when applicable.

Click on the program name you want to add to Tools. Only EXE, PIF and BAT files will be listed. Double-clicking has no different effect.

After **selecting** a program to add, **click** on this Button to assign it's icon to Tools. If you aren't satisfied with the default icon, you can assign a **custom** icon later.

Will **complete** the addition of a new program. If you haven't selected a Program, you'll exit the **Add Tool** utility.

Once you've selected a program, it's default icon will be displayed here. When loaded into [Tools](#), the icon will be slightly **distorted** (shrunk). This is normal to save **desktop real-estate**.

Will display the **program path** of the file you've **selected**.

After highlighting the necessary **Working Directory** using the **Drive** and **Directory** controls, click on this button. Be sure to **double-click** on the **Directory** to make it **active**.

You can **determine** the Working Directory and any necessary command line parameters in Program Manager by clicking on the Program's icon in it's Group and pressing **Atl+Enter**.

If a **command line parameter** is necessary with the program you want to launch, enter the parameters in the **text box**, then press this button.

Any necessary **Command Line Parameters** should be entered in this text box.

Using Custom Icons

When you select to install a custom icon, the following pop-up message will remind you that [File Manager](#) is needed to **Drag 'n Drop** your icon onto the [Custom Icon Module](#).



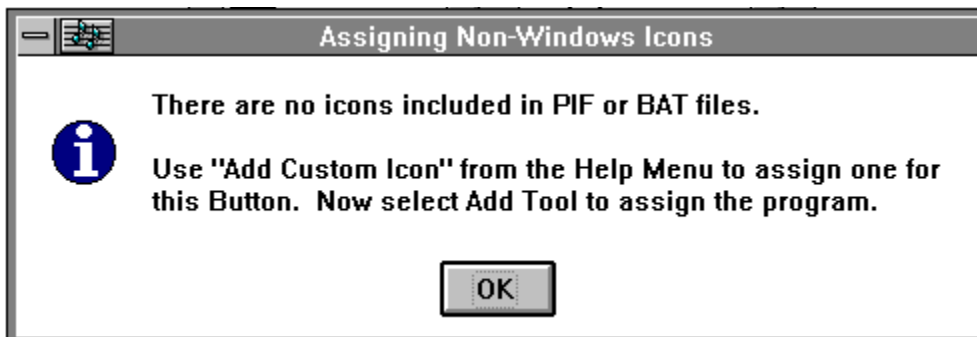
When initially loaded, the [Custom Icon Module](#) will be positioned in the lower right corner of your display, and will contain no icon.



After you drag a selected icon onto the [Custom Icon Module](#), it will be displayed for verification. If you're not satisfied with your selection, drag a **different** icon into the [Module](#). Clicking on **OK** will assign the icon to the Button being configured.

Custom Icons can be added to [Tools](#) Buttons already containing icons. This procedure has no affect on the program assigned to the Button.

If you add a program controlled by a [PIF](#) or [BAT](#) file, you will receive the following message. It will be necessary to add a **custom** icon for the button being configured.



License

Micro-Tools 2.0 Registered User License Agreement

This License Agreement permits you to use one copy of the software version specified above on any single computer. If the software is permanently installed on the hard disk or other storage device of a computer other than a network server, and is used by one person on that computer for more than 80 percent of the time it is in use, then that person may also use the software on a portable or home computer.

The software is owned by Micro-Bytes\WordWare or its suppliers, and is protected by United States copyright laws and international treaty provisions. You must treat the software like any other copyrighted material, with two exceptions: (1) You may make one copy of the software for backup or archival purposes. (2) You transfer the software to a single hard disk provided you keep the original solely for backup and archival purposes. You may not copy the written materials accompanying the software.

Warranty

Micro-Bytes\WordWare or its suppliers warrants that the software will perform substantially in accordance with the accompanying documentation for a period of ninety (90) days from the date of registration.

The information and code provided hereunder (collectively referred to as "software") is provided as is without other warranty than described above, either expressed or implied, including but not limited to the implied warranties of merchantability and fitness for a particular purpose. In no event shall Micro-Bytes\WordWare or its suppliers be liable for any damages whatsoever including direct, indirect, incidental, consequential, loss of business profits or special damages, even if Micro-Bytes\WordWare or its suppliers have been advised of the possibility of such damages.

