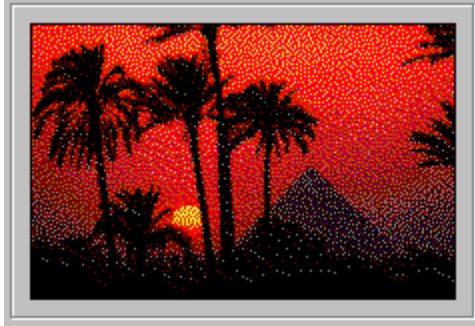




Table of Contents

- ✓ [*Introduction & Registration Info*](#)
- ✓ [*ASP Ombudsman Statement*](#)
- ✓ [*What is Shareware?*](#)
- ✓ [*clySmic Icon Bar \(Clysbar\)*](#)
- ✓ [*Luna - a lunar almanack*](#)
- ✓ [*clySmic Papers*](#)
- ✓ [*clySmic Drag 'n' Drop Utilities for Windows NT*](#)
- ✓ [*Video Palette Tool \(VPT\)*](#)
- ✓ [*VFont*](#)
- ✓ [*Sel*](#)
- ✓ [*About clySmic Software*](#)



Shareware Catalog - Early Summer '94

Copyright 1994 by clySmic software. All rights reserved.



Introduction & Registration Info



This is the catalog of clySmic Software, purveyors of fine Shareware since 1987. These programs are available from BBS' worldwide, Shareware Libraries, Shareware CD-ROMs, or direct from clySmic. When ordering \$0 Shareware from clySmic, include \$5 per order for postage and handling, for other products include the full registration fee.

You can obtain or download these products, then register them with clySmic. Cash, checks, and money orders are accepted for all products. Make checks payable, in U.S. dollars, to Ralph B Smith Jr (all other checks will be returned).

Clysbar and the **NT Utilities** can be registered via *CompuServe*. **Clysbar** can also be registered through the *Public (software) Library* via an 800 number with a credit card. See the documentation files of these products for details.

Legal and Distribution Information

clySmic Icon Bar (Clysbar) V2.10



The clySmic Icon Bar is an icon bar program launcher/shell for Windows 3.1. Clysbar has variable size buttons, nested (tree-structured) icon bars; uses icons from EXE/DLL/ICOs; has user-selectable colors, number of clicks to launch, &c.

Clysbar also has full drag 'n' drop program launching support, and can "QuickAdd" program to bar using drag 'n' drop. Includes full DOS icon support. Other features include: hot keys, program descriptions, and a "Startup" menu bar. [Shareware](#).

[Moon Add-In](#) and Clysbar [Add-In SDK](#) are also included.

Detailed List of Clysbar Features

What's New in Version 2.10?

Price: \$24.95 (USD)

New version (due 1-June-94): 2.10

Zip file name: CB210.ZIP



Windows 3.1 required.



For Windows programmers, the **Clysbar Add-In Software Development Kit** comes with instructions and source code examples in C and Pascal, either as CBSDK.ZIP or directly from clySmic (send \$3.00 s&h unless ordering Clysbar at the same time).



The **Moon Phase Add-In** displays the Moon's phase, rising, southing, setting, and much more!



Cly sbar Features

- Sub-Icon Bars, a.k.a. **nested** icon bars, so you can have a hierarchical (tree) structure with many more programs than will fit on the screen.
- The ability to extract icons from **.ICO** files, Windows **.EXE** files, and **.DLL** files.
- Various "aesthetic" customizing options, such as up arrow buttons, colors, which side the bar is on, &c.
- The **time of day** (local or GMT) displayed at all times, so a clock program isn't needed.
- Cly sbar provides the **shaded 3-D button look**; the icons don't have to be specially designed to look like buttons.
- Configuration control done by a program rather than editing an INI file
- You can run programs maximized, normal, minimized, or **MinMax** and specify a starting directory.
- Several button sizes.
- Bar can be shrunk out of the way when needed.
- Can use single or double-click to run an application.
- clySmic Button** gives access to the Icon Bar Options Dialog, which can adjust the icon bar and provide Windows information.
- Optional **keyboard** interface.
- QuickAdd: to quickly add a program to the current icon bar, **drag** a program from File Manager and **drop** it on the clySmic Button.
- The clock font can be selected from any font in the system, including TrueType fonts.
- Cly sbar has its own **Startup** icon bar. The applications on this bar are loaded when the system is started and Cly sbar is the system shell.
- The buttons on the bar press themselves as you drag a file over them.
- There is an option to keep the icon bar **always on top** of other windows.
- Cly sbar **Add-Ins**, DLL programs that run and display information within a button. Included are Add-Ins for **System Information**, a **Calendar**, and a **Random Line** drawing Add-In.
- Several options when exiting Windows (**Exit, Restart, Reboot**).
- The bar can be horizontal, as well as vertical.
- Multirun**, which allows you run an entire icon bar of programs with one click.
- Buttons can have **descriptions** displayed in the Info Window instead of the program name. Name buttons

anything you want!

- Icon bars can be **longer (or wider) than the screen**, you scroll the bar up and down with the **PgUp** and **PgDn** keys.
- Info Windows have their own font, selectable from a dialog in the configuration utility. You can have very large, readable Info Windows.
- Hot keys** are supported for all programs: any combination of Shift, Ctrl, Alt and a character can be used. Clysbar has its own hot key whose default is **Ctrl-Alt-C**.
- Clysbar can ask you for the **command-line parameters** of a program if you include a parm of **??**. For example: `NOTEPAD ??=` runs Notepad and asks you what file to load.
- Home** and **End** move to the start and end of the bar, **Enter** as well as space presses a button, and **?** toggles the information window of a button.
- The documentation is in **Windows Help** format. Press F1 in the bar or configurator, or use the Help buttons.
- Buttons can have **Stone, Brick** or **Marble** background textures.
- Button icons can be **stretched**. This can be used to improve appearance on hi-resolution displays (or to make big buttons with big icons!).



What's New in Version 2.10

- ☑ Uses Microsoft's **3-D** dialog library, CTL3DV2.DLL, which is automatically installed by the Install program if not already present
- ☑ New **Fat Button** mode (set from the Info Window dialog) gives a completely new look to Clysbar: oblong buttons with text *inside* the button itself
- ☑ Users with high-color systems (more than 256 colors) can now pick Clysbar's colors from *any* colors the system supports, up to 16.7 million on 24-bit systems
- ☑ Clysbar Configurator now has help buttons in all dialogs for easier context-sensitive help
- ☑ New **Gradient** button texture (only for video systems with 32K colors and up)
- ☑ New help look, with **outline-style** Table of Contents and 3-D look
- ☑ New program option on program settings dialog: **Run Once, Bring to Top Other Times**. This allows a program to be run only once, clicking the icon bar button for the program a second time brings the running program to the top
- ☑ Window Info dialog now reports whether we're running under the Win16 subsystem of Windows NT, under OS/2, or on a system with Win32s installed
- ☑ New configurator option (**Old-Style Collapse and Close**) to use old-style (pre-2.00) right-mouse-clicks on the Clysmic Button
- ☑ To convert **Program Manager groups**, just drag the .GRP file and drop it on the Clysmic Button, new icon bar(s) will be created (note: the program GroupCvt is still required). We can now convert groups with up to 100 items
- ☑ Digital clock settings for the **time separator, leading zero and 12 v. 24 hour** are all picked up from Windows' international settings (set from the Control Panel)
- ☑ **Run minimized** command improved - now works with MS Mail and full-screen DOS programs
- ☑ Clarified help text for "new add-in" versus "edit existing add-in"
- ☑ **"Flashing windows"** bug fixed, it occurred when SysInfo was on a bar other than Main
- ☑ *All* Drag 'n' Drop Add-Ins now work when installed in bars other than Main
- ☑ Installer adds Moon Add-In button to CLYSBAR.INI *only* if Moon Add-In installed
- ☑ New shell program: **ClysbarX**, which calls Clysbar. This fixes a bug that resulted in loss of wavefile sound functions when using Clysbar as the shell

Luna - a Lunar Almanack



clySmic Lunar Almanack - displays the current moon phases, rising, southing, and setting times, the constellation and signe of the moon, and more. Easy to use, with beautiful, colorful graphical display with moon icons and pictures. Can run as an icon displaying the phase only.

Shareware.

What Does Luna Look Like?



Price: \$9.95 (USD)

New version (due 1-July-94): 2.00

Zip file name: LUNA.ZIP





Windows 3.1 required.

clySmic Lunar Almanack

Date Options Help

20-Apr-94

Moon's Phase: Waxing, Gibbous. Age: 10 days.



Ascending Node is at 7 signes, 25°.

Place: **the Constellation and Signe of Leo, the Lion, 20°.**

Sets: **2:48 morn.** Rises: **1:43 eve.** Souths: **8:40 eve.**

The moon appearing larger at sunset, and not dim but luminous, portends fair weather for several days.

— Francis Bacon, "Historia Ventorum."

clySmic Papers



clySmic Papers is a series of utilities that ease loading Windows wallpaper. They all facilitate keeping wallpaper in directories other than the Windows directory. There is a common dialog-style loader, a drag 'n' drop icon loader, and a File Manager Extension (which also includes a number of other functions, such as ejecting CD-ROMs and quick-exiting Windows). For network users, there is a paper refresher, so wallpaper can be loaded from remote, networked drives.

What Does the Common Dialog Wallpaper Loader Look Like?



Price: \$9.95 (USD)

Current version: 1.12

Zip file name: PAPERS.ZIP



Windows 3.1 required.

clySmic Wallpaper Changer

File Name:

*.bmp

- atoll-v4.bmp
- atoll-v8.bmp
- ayers.bmp
- barn-v8.bmp
- beach.bmp
- birch.bmp
- birch2.bmp
- canoe-v8.bmp
- china-v8.bmp
- egypt1 v4.bmp

List Files of Type:

All Bitmaps

Directories:

c:\win\bitmaps\land

- c:\
- win
- bitmaps
- land

Drives:

c: pliny elder

OK

Cancel

Network...



Drag 'n' Drop Utilities for Windows NT



The clySmic Drag 'n' Drop utilities are true 32-bit Win32/Windows NT programs designed to provide desktop tools for the new Windows NT operating system. Most use a drag 'n' drop metaphor.

ClysXten is "reminderware," all the other utilities are no-nag [Shareware](#). Included are:

<i>Paper Drop,</i>	a drag 'n' drop wallpaper changer.
<i>Paper Freshen,</i>	a network wallpaper loader.
<i>EXE Type,</i>	a drag 'n' drop executable file information program.
<i>Clys File Mgr Extension,</i>	Winfile version of EXEType, PaperDrop & GenDrop. (complete with toolbar buttons!)
<i>Recycler,</i>	the ubiquitous drag 'n' drop trashcan program.
<i>Exit NT,</i>	a quick Logoff/Shutdown/Reboot NT program.
<i>Digital Clock,</i>	a clock
<i>Analog Clock,</i>	another clock (with many choices for the clock face)
<i>General Drop,</i>	turns most any program into a drag 'n' drop program.
<i>System Info</i>	an NT System Information program.

Most utilities will also run under DOS/Windows 3.1 using the Win32s libraries. Register now and take advantage of our low, introductory price. [Shareware](#).



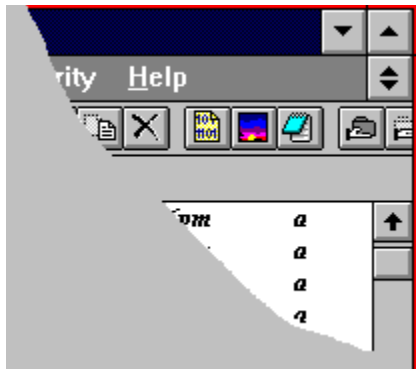
Price: \$14.95 (USD)

Current version: 1.40

Zip file name: NTUTIL.ZIP



Requires Windows NT 3.1.



Video Palette Tool (VPT)



The better VGA color controller. See all 262,144 colors of your VGA in text mode! Find out what you've been missing. User-friendly, full-screen interface is easy to use. Also a command-line interface for use in batch files. Originally released in 1987. [Shareware](#).



Price: \$20.00 (USD)

Current version: 4.15

Zip file name: VPT415.ZIP



Requires DOS 3.1 or later and VGA-compatible video.

VFont and VFont/2

cljSmic VFont is a set of VGA text-mode fonts & font loader. DOS and OS/2 full-screen versions are included. Fonts include: **Swiss** (sans-serif), **Roman**, **Muchery (TM)**, **Tektite**, **Clouds**, **Blockx**, **Moderne**, and the infamous **Scrawl**.

These are quality fonts: all characters (including foreign characters) are rendered in the proper font. Fonts stick across mode changes. Ditch that *ugly* default VGA font. Shareware.



Price: \$0 (zero-dollar shareware)

Current version: 5.50

Zip file name: CVFONT.ZIP



Requires DOS 3.1 or later or OS/2, and VGA-compatible video.

Sel

The easy ANSI color controller for the DOS prompt. Also sets the prompt color. For example, just type:

`SEL /W/B/C`

and the screen colors will be white on blue with a cyan prompt. OS/2 version also included. [Shareware](#).



Price: \$0 (zero-dollar shareware)

Current version: 6.05

Zip file name: SEL.ZIP.



Requires DOS 3.1 or later or OS/2.

For DOS, ANSI.SYS or equivalent must be loaded.

Legal Information



All current clySmic products are released as ***Shareware***. For non-\$0 Shareware: after a thirty day trial period, you must register the product(s) or discontinue using them. If you register, send the product cost (in U.S. dollars) as a registration fee for ***each*** machine (including network workstations) they are executed upon. N.Y. State residents add applicable Sales Tax.

You may copy clySmic products and distribute them without charge for non-commercial, non-governmental use. You may not sell or otherwise charge for clySmic products. However, users' groups and libraries may charge a small fee for media and postage. Please be certain that all files are kept together.



All clySmic products are provided ***AS IS*** without any warranty, expressed or implied, including but not limited to fitness for a particular purpose. So there.

clySmic Software is not responsible for anything that may happen when you use clySmic products, including hardware damage or information loss.

[For quantity orders or site licenses, please contact clySmic directly for details and volume discounts.](#)

Make Checks or Money Orders Payable to [Ralph B. Smith Jr](#) - All Checks Made Out to clySmic Software Will Be Returned!!!



clySmic Software
P. O. Box 2421
Empire State Plaza
Albany, NY 12220

CompuServe 76156,164
Internet: 76156.164@compuserve.com



*clySmic Software is a member of the
Association of Shareware Professionals*

WinHelp Catalog No. 5, Early Summer '94



What is Shareware?

Shareware distribution gives users a chance to try software before buying it. If you try a Shareware program and continue using it, you are expected to register. Individual programs differ on details -- some request registration while others require it, some specify a maximum trial period. With registration, you get anything from the simple right to continue using the software to an updated program with printed manual.

Copyright laws apply to both Shareware and commercial software, and the copyright holder retains all rights, with a few specific exceptions as stated below. Shareware authors are accomplished programmers, just like commercial authors, and the programs are of comparable quality. (In both cases, there are good programs and bad ones!) The main difference is in the method of distribution. The author specifically grants the right to copy and distribute the software, either to all and sundry or to a specific group. For example, some authors require written permission before a commercial disk vendor may copy their Shareware.

Shareware is a distribution method, not a type of software. You should find software that suits your needs and pocketbook, whether it's commercial or Shareware. The Shareware system makes fitting your needs easier, because you can try before you buy. And because the overhead is low, prices are low also. Shareware has the ultimate money-back guarantee -- if you don't use the product, you don't pay for it.



Legal Disclaimer and Agreement

Users of Clysbar must accept this disclaimer of warranty:

"Clysbar is supplied AS IS. The author disclaims all warranties, expressed or implied, including, without limitation, the warranties of merchantability and of fitness for any purpose. clySmic Software assumes no liability for damages, direct or consequential, including hardware damage or information loss, which may result from the use of Clysbar."

Clysbar is a *Shareware program* and is provided at no charge to the user for evaluation. Feel free to share it with your friends, but please do not give it away altered or as part of another system. The essence of "user-supported" software is to provide personal computer users with quality software without high prices, and yet to provide incentive for programmers to continue to develop new products. If you find this program useful and find that you are using Clysbar and continue to use Clysbar after a reasonable trial period, you must make a registration payment of \$24.95 to clySmic Software. The registration fee will license one copy for use on any one computer at any one time. You must treat this software just like a book. An example is that this software may be used by any number of people and may be freely moved from one computer location to another, so long as there is no possibility of it being used at one location while it's being used at another, just as a book cannot be read by two different persons at the same time.

Commercial users of Clysbar must register and pay for their copies of Clysbar within 30 days of first use or their license is withdrawn. Site-License arrangements may be made by contacting clySmic Software.

Anyone distributing Clysbar for any kind of remuneration must first contact clySmic Software at the listed addresses for authorization. This authorization will be automatically granted to distributors recognized by the Association of Shareware Professionals (ASP) as adhering to its guidelines for Shareware distributors, and such distributors may begin offering Clysbar immediately (however clySmic Software must still be advised so that the distributor can be kept up-to-date with the latest version of Clysbar.).

You are encouraged to pass a copy of Clysbar along to your friends for evaluation. Please encourage them to register their copy if they find that they can use it. Please be certain that all files are kept together.



ASP Ombudsman Statement

This program is produced by a member of the *Association of Shareware Professionals* (ASP). ASP wants to make sure that the Shareware principle works for you. If you are unable to resolve a Shareware-related problem with an ASP member by contacting the member directly, ASP may be able to help. The ASP Ombudsman can help you resolve a dispute or problem with an ASP member, but does not provide technical support for members' products. Please write to the ASP Ombudsman at:

**ASP Ombudsman
545 Grover Road
Muskegon, MI 49442**

or send a CompuServe message via CompuServe Mail to ASP Ombudsman 70007,3536.

[About clySmic Software](#)

