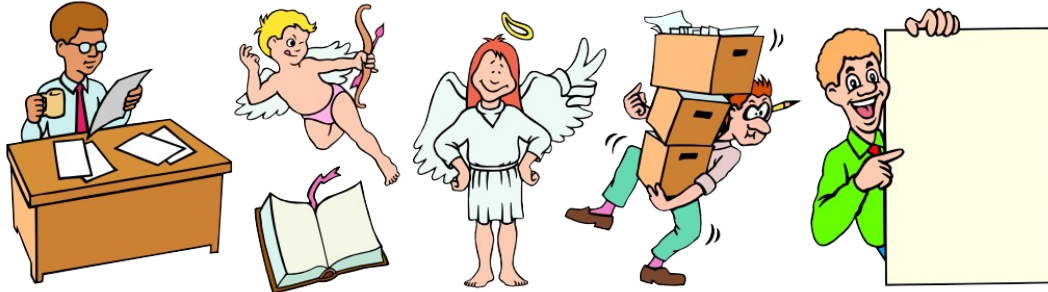


Arts & Letters EXPRESS Test Drive

If you have not installed the Test Drive version of Arts & Letters EXPRESS, you will be missing thousands of clip-art images and a very special opportunity.



To install the Arts & Letters EXPRESS Test Drive:

1. From the Program Manager, pull down the File Menu and choose the Run... command.
2. Type x:\install where x is the CD-ROM drive on your computer (D, E, etc.). Press the Enter key on the keyboard to run the installation.
3. Pull down the Installation menu and choose Install. The *Product Choices* dialog box will appear.
4. Click on **Arts & Letters Test Drive [Hard drive/8MB & CD]** to highlight the selection and then click on OK.
5. If you prefer Metric units of measurement instead of English units, click on **Arts & Letters DRAW English Setup** to deselect the option. The program will install the Metric Units option.
6. Follow the instructions that appear on the screen. The Arts & Letters EXPRESS icon will appear in the Arts & Letters Program Group.

To Run Arts & Letters EXPRESS:

Click on the Arts & Letters EXPRESS icon in the Arts & Letters program group to start the program.

METRIC VS. ENGLISH UNITS OF MEASURE:

If you installed Arts & Letters DRAW without changing any of the defaults, Arts & Letters DRAW will display dimensions in English units of measure. To change to Metric units, copy the file *.def from the **draw\program** directory on the CD-ROM to wherever you installed the DRAW program on your fixed disk.

FREE GIFT

Pull down the Help menu and click on Free Gift to display an

order form for additional copies of the Arts & Letters Guided Tour CD-ROM.

FREE CLIP ART

Once you have installed Arts & Letters DRAW, click on the Special Offer button in the opening screen to display instructions for obtaining your free Clip-Art images.

TECHNICAL SUPPORT

If you have any questions, see the on-line Help or in North America, contact:

Computer Support Corporation
15926 Midway Road
Dallas, Texas 75244
Tel: 214-661-8960
Fax: 214-661-5429
Hours: 8:30 am to 6:30 pm, CST.

Outside of North America, contact one of the distributors listed below.

Australia

Alkira Australia Pty Ltd.
Locked Bag 9
Epping NSW 2121
Tel: (61) 2 876 8000
Fax: (61) 2 876 5134

Austria

Softline GmbH
Appenweierer Strasse 45
D-77704 Oberkirch
Germany
Tel: (49) 7802 9240
Fax: (49) 7802 924240

Belgium

Inimap n.v.
Attenrodestraat 6
B-3391 Meensel-Kiezezem
Tel: (32) 16 632031
Fax: (32) 16 631584

Denmark

ASK Corp.
Gråbrødretorv 1
1154 København K
Tel: (45) 33 33 98 88
Fax: (45) 33 33 98 20

England

Deverill Business Systems
1 Victoria Road, Parkstone

Poole, Dorset BH12 3BA
Tel: (44) 0202 722554
Fax: (44) 1202 735139

Finland

TT-Microtrading
Sinikalliontie 1
SF-02630 Espoo
Tel: (358) 0 502741
Fax: (358) 0 5027499

Germany

Softline GmbH
Appenweierer Strasse 45
D-77704 Oberkirch
Tel: (49) 7802 9240
Fax: (49) 7802 924240

Japan

Knox Data International
5-27-4 Minami-Ohi
Shinagawa-Ku, TOKYO 140
Tel: (81) 3 3766-0411
Fax: (81) 3 3766-0613
Fax: (81) 3 3763-1459

Korea

Applied Engineering, Ltd.
Suite 308, Kaelim-Bldg
17 DangsangDong
Yeongdeungpo, Seoul 950-041
Tel: (82) 2 679-7691
Fax: (82) 2 677-3863

New Zealand

Alkira Australia Pty Ltd.
Locked Bag 9
Epping NSW 2121
Tel: (61) 2 876 8000
Fax: (61) 2 876 5134

Netherlands

BIS
Rietdekkerstraat 14
2984 BM Ridderkerk
Tel: (31) 1804 30000
Fax: (31) 1804 12377

Norway

ASK Corp.
Gråbrødretorv 1
1154 København K
Denmark
Tel: (45) 33 33 98 88
Fax: (45) 33 33 98 20

Sweden

PC Grafik AB
Datavägen 12A
S-436 32 Askim
Tel: (46) 31-680220
Fax: (46) 31-684915

Switzerland

Softline GmbH
Appenweierer Strasse 45
D-77704 Oberkirch
Germany
Tel: (49) 7802 9240
Fax: (49) 7802 924240

gt 5/95