

## Table of Contents

### Menus:

[File Menu](#)

[Edit Menu](#)

[Letter Menu](#)

[Mail Menu](#)

[Folder Menu](#)

### Topics:

[Address Book](#)

[Backup/Restore](#)

[Command-Line](#)

[Delivering Mail](#)

[The Desktop](#)

[Fetching Mail](#)

[Folders](#)

[Getting Started](#)

[How Do I?...](#)

[The In Box](#)

[Mail Services](#)

[The Out Box](#)

[Overview](#)

[Reading Mail](#)

[Registering RFD Mail](#)

[Script Files](#)

[Signatures](#)

[Troubleshooting](#)

[Writing Mail](#)

## File Menu

The File Menu contains the following options:

### Import|Letter...

Use this option to create a new letter which contains the text of an existing file. Selecting this option will display a File Dialog which allows you to select a text file. Once you have selected a file and pressed **OK**, a New Letter Window will appear with the contents of the text file as its body.

### Import|Address Book...

Use this option to add addresses to the Address Book from a tab-delimited text file. Selecting this option will display a File Dialog which allows you to select a text file. Once you have selected a file and pressed **OK**, the addresses found in the text file will be added to the Address Book.

### Export|Letter..

Use this option to create a text file from a letter. Selecting this option will display a File Dialog which allows you to select a text file. Once you have selected a file and pressed **OK**, a text file containing the contents of the currently selected letter will be created. If you would like to add the letter to an existing text file, merely select the **Append** check box in the File Dialog before pressing **OK**.

### Export|Address Book...

Use this option to export the Address Book to a tab-delimited text file. Selecting this option will display a File Dialog which allows you to select a text file. Once you have selected a file and pressed **OK**, the addresses in the Address Book will be placed into the text file.

### Backup...

Use this option to either backup your letters to protect against data loss, or to transfer letters and folders to another computer. Selecting this option will display a Backup Dialog which allows you to select a set of letters to backup, and the backup file to place them in. You can select letters by both Folder and Date Range. When you press **OK**, a single backup file is created which contains the selected letters.

### Restore...

Use this option to restore letters and folders from a backup file created from the previous menu option. Selecting this option will display a File Dialog which allows you to select a backup file. Once you have selected an existing backup file and pressed **OK**, a Restore Dialog is displayed. You can then select letters to restore by both Folder and Date Range. When you press **OK**, letters from the backup file are placed into the folders you selected, creating new folders if necessary.

### Print...

Use this option to send a letter to the printer. Selecting this option will display a Print Dialog. Pressing **OK** will send the currently selected letter to the printer displayed in the Print Dialog.

### Printer Setup...

Use this option to choose which print you wish **RFD Mail** to use, and to set the options on that printer. Selecting this option will display a Printer Setup Dialog. Select the printer you wish to print to and press **OK**.

### Preferences...

Use this option to set the global preferences for the **RFD Mail** program. Selecting this option will display a Preferences Dialog which allows you to adjust global settings such as the Quote String, Word-Wrap, etc.

### **Modem Preferences...**

Use this option to set the modem preferences for the **RFD Mail** program. Selecting this option will display a Modem Preferences Dialog which allows you to adjust global settings such as Modem Initialization, Default Mail Service, Redial Attempts, etc.

### **Edit Signatures...**

Use this options to create and manage signatures which will be used when delivering mail. Selecting this option will display a Signatures Dialog.

### **Exit**

Selecting this option will cause the **RFD Mail** program to exit. If you are online, the program will first ask if you wish to abort the phone connection. If you select **Yes**, the modem will hang-up and the program will exit. If you select **No**, then the modem will continue communication with current Mail Service and the program will not exit.

### **See also:**

Backup/Restore

## **Edit Menu**

The Edit Menu applies to text-editing operations (such as entering the body of a letter, or editing the subject of a letter) and contains the following options:

### **Undo**

Selecting this option will undo the last Cut, Copy, or Paste operation. Hitting **Alt+Bskp** will perform the same task.

### **Cut**

Selecting this option will remove the currently selected text and place it on the Windows Clipboard. Hitting **Shift+Del** will perform the same task.

### **Copy**

Selecting this option will place the currently selected text on the Windows Clipboard without removing it first. Hitting **Ctrl+Ins** will perform the same task.

### **Paste**

Selecting this option will place the text currently on the Windows Clipboard and insert it at the current insertion point. Hitting **Shift+Ins** will perform the same task.

### **Delete**

Selecting this option will remove the currently selected text without placing it on the Windows Clipboard. Hitting **Del** will perform the same task.

## Letter Menu

The Letter Menu contains options which allow you to create and delete letters, as well as move them between various places on your desktop. It contains the following options:

### New Letter...

Use this option to create a new letter. Selecting this option will create a New Letter Window and place it on the desktop. You are then free to specify the address, fill out the subject line, and enter the body of the letter.

### Create Reply Blank Reply

Use these options to reply to letter that you have received. Selecting one of these options will create a New Letter Window which is based on the currently selected letter and place it on the desktop filled in as follows:

- The address will be the address of the person from whom you received the selected letter.
- The subject will be the subject of the selected letter prepended with "Re: ".
- The body will be empty ([Blank Reply](#)), or will contain a copy of the original letter ([Create Reply](#)).

How the body of the original letter is copied into the new letter is determined by the [Quote String](#) field in the [Preferences Dialog](#), see the topic [Creating a Letter](#) for more details.

### Forward

Use this option to forward a letter to another destination. Selecting this option will create a New Letter Window which is based on the currently selected letter and place it on the desktop filled in as follows:

- The subject will be the subject of the selected letter.
- The body will be a copy of the body of the selected letter.

### Edit CC...

Use this option to create and/or edit the list of additional destinations for this letter. Selecting this option will bring up a CC Dialog with the current list of users which receive a Carbon Copy of this letter.

### Edit Options...

Use this option to set various options on the current letter. Selecting this option will bring up a Letter Options Dialog.

### Delete

Use this option to delete a letter. Selecting this option will display a dialog asking whether you really wish to delete the current letter. If you select **Yes**, then the letter will be deleted. If you select **No**, then no action is taken.

### To Desktop

Selecting this option will remove the currently selected letter from the In Box, Out Box, or Folder (depending upon where this letter resides), and creates a Letter Window on the desktop.

### To Outbox

Selecting this option will remove the currently selected New Letter Window and place the letter into the Out Box.

**To Folder...**

Selecting this option will display a Letter To Folder dialog which lists all the Folders you currently have. Selecting a folder from this dialog and pressing **OK** will cause the currently selected Letter Window or letter to be moved into the specified folder.

**Grab Address...**

Use this option to quickly place an address from a letter into the Address Book. Selecting this option will display a Mail User Dialog which contains the address of the currently selected letter. After making any changes you desire, press the **OK** button and the address will be added to the Address Book.

## Mail Menu

The Mail Menu contains options that allow you to send mail and receive mail from one or more Mail Services.

### Deliver Letter

Use this option when you only wish to send a single letter to its destination. Selecting this option will cause the currently selected New Letter Window or currently selected Out Box Letter to be placed into a Mail Bundle. A Modem Window will appear which will dial the appropriate Mail Service, and deliver the Mail Bundle to that service.

### Deliver Out Box

Use this option when you wish to send multiple letters in one operation. Selecting this option will cause all letters currently in the Out Box to be placed into one or more Mail Bundles (one bundle for each Mail Service which needs to be called). A Modem Window will appear which will dial the appropriate Mail Service, and deliver the Mail Bundle to that service. This occurs for each bundle that needs to be delivered.

### Fetch...

Selecting this option will display a Mail Services Dialog which contains all the of the Mail Services currently configured. Selecting a service and pressing **OK** will cause a Modem Window to appear, which will dial that service and fetch any mail that may be waiting. Any letters that are received are placed in the In Box.

### Fetch from Default

Selecting this option will cause a Modem Window to appear, which will dial the Default Mail Service and fetch any mail that may be waiting. Any letters that are received are placed in the In Box.

### Fetch from All

Selecting this option will cause a Modem Window to appear, which will dial each Mail Service in turn and fetch any mail that may be waiting. Any letters that are received are placed in the In Box.

### Poll...

Selecting this option will cause a Mail Poll Dialog to appear, allowing you to set the interval which you wish **RFD Mail** to automatic fetch mail.

### Abort Phone Connection

Selecting this option while a Modem Window is on the desktop will cause a dialog box to appear, requesting that you confirm that you wish to abort the phone connection. Selecting **Yes** will cause the modem to hang up the line, and causes the Modem Window to disappear.

## Folder Menu

The Folder Menu contains options which allow you to manage Mail Folders.

### **New...**

Use this option when you wish to create a new Folder. Selecting this option will cause a dialog to appear which allows you to enter the name of the new folder. If you press **OK**, a new Folder Window will appear on the desktop.

### **Delete**

Use this option when you wish to delete a Folder. Selecting this option will cause a dialog to appear which request that you confirm the operation. If you press **Yes**, the currently selected Folder Window **and all of its letters** is removed from the desktop

### **Rename...**

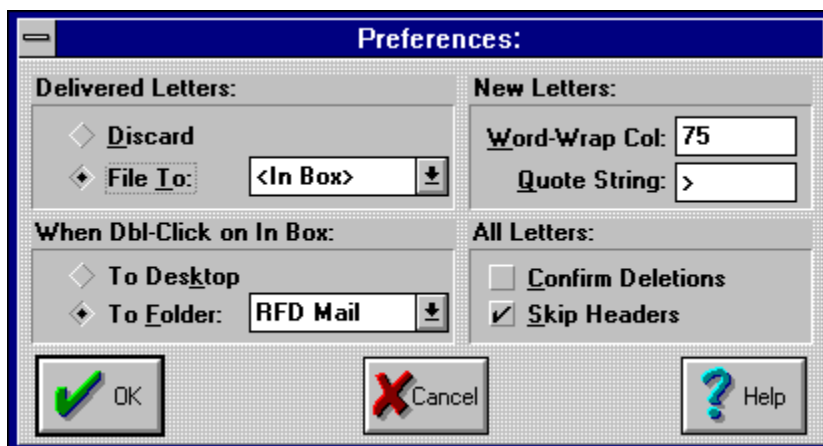
Selecting this option will cause a dialog to appear which allows you to enter new name for the currently selected Folder Window. If you press **OK**, the folder's name is updated

.



## Preferences Dialog

The Preferences Dialog allows you to adjust various settings that affect the operation of **RFD Mail**, such as filing options for received mail, the word-wrap to use in the New Letter Window, and other miscellaneous settings. This dialog is accessible by selecting the File Preferences menu option, and appears below:



*(click the mouse over the part of the dialog you need help on)*

Select this option if you want a copy of each letter you send to be placed into a specific Folder, after it has been successfully delivered. If you select this option you need to also choose the folder you want the letter moved to by using the drop-down list directly to the right of this option.

Select this option if you want letters to be discarded after they have been successfully delivered.

Select this option if you want a double-click on a letter in the In Box to cause it to jump out to the desktop.

Select this option if you want a double-click on a letter in the In Box to move it to a specific Folder. If you select this option you need to also choose the folder you want the letter moved to by using the drop-down list directly to the right of this option.

This field is where you enter the characters which will be inserted on the left side of a letter when using the Letter|Create Reply menu option. If this field is blank, the body of the original letter will be copied verbatim into the new letter.

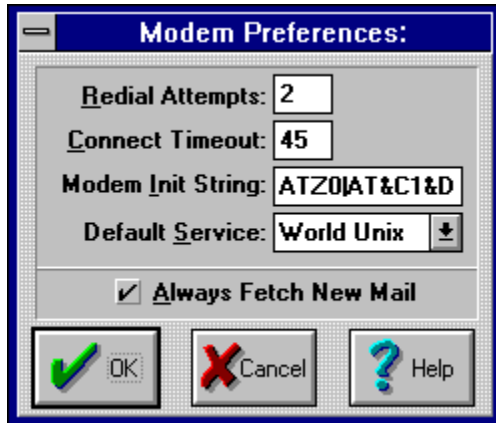
When this option is checked, **RFD Mail** will prompt you on every letter you attempt to delete.

When this option is checked, letters in Folders will automatically scroll past the header section of the letter each time you reselect a letter.



## Modem Preferences Dialog

The Modem Preferences Dialog allows you to adjust various settings that affect the operation of **RFD Mail** when it is dialing Mail Services. This dialog is accessible by selecting the File|Modem Preferences menu option, and appears below:



*(click the mouse over the part of the dialog you need help on)*

This field is where you enter the number of times that you want **RFD Mail** to retry a Mail Service (if, for example, the line is busy) before giving up on the connection.

This field is where you enter the length of time (in seconds) that **RFD Mail** will wait for a successful modem connection when dialing a Mail Service.

This field is where you enter the Modem Initialization String that you want **RFD Mail** to send to your modem before each call that it places.

This field is where you enter the Mail Service that you want **RFD Mail** to fetch mail from when you select the **Fetch from Default** option in the **Mail** menu.

When this option is checked, **RFD Mail** will always fetch new mail from a Mail Service. If this option is **not** checked, then **RFD Mail** will only fetch new mail if you select one of the **Fetch** options from the **Mail** menu.

This field is where you enter the Word-Wrap column to use in the New Letter Window.

## Modem Initialization

The Modem Initialization String is a sequence of characters which are sent to the modem each time a call is placed to a [Mail Service](#). The string is usually a standard Hayes "AT" command string which sets various parameters inside the modem.

The only extension to the Hayes command set is the addition of the vertical-bar character "|". The vertical-bar signifies that a carriage return character should be sent to the modem, and that the program should wait for the modem to respond "OK" before sending the rest of the Initialization String.

By default, the Modem Initialization String is set to `AT&F|AT&C1&D2|` (note the trailing vertical-bar). This initiates the following sequence whenever a call is placed to a Mail Service:

- The "AT&F" command is sent, which resets the modem to the factory default settings
- "OK" is returned by the modem.
- The "AT&C1&D2" command is sent, which instructs the modem to track the carrier-detect signal, and to hang up the line if the DTR line drops.
- "OK" is returned by the modem.
- The dialing sequence for the current Mail Service begins.

If you see "ERROR" appear in the Modem Window when you call a Mail Service, then you probably need to customize the Initialization String for your particular modem. You should refer to your modem's instruction manual for details on how to do this. You can also try leaving the [Modem Init String](#) field in the [Modem Preferences Dialog](#) blank, which causes no string to be sent.



**Mail Address:**

This field is where you enter your Mail Address assigned to you by this Mail Service. For example: "12345,6789" or "J.DOE1".

In most cases this is the same as your Username (CompuServe and UNIX accounts for example), or might be different (GEnie, for example).

**Username:**

This field is where you enter your Username assigned to you by this Mail Service and is the value used when you log into your account. In most cases this is the same as your Mail Address (CompuServe and UNIX accounts for example), or might be different (GEnie, for example).

**Name:**

This field is where you enter the name of this Mail Service. It should be something intuitive (i.e., "CompuServe", "GEnie") but can be assigned any name you choose.

**Password:**

This field is where you enter the password necessary to log into this Mail Service. Note that for security, only asterisks " \* " will be displayed in this field.

**Phone Number:**

This field is where you enter the phone number of this Mail Service. Note that some services have several numbers corresponding to different modem speeds. Enter the number appropriate for the baud rate that you specify in this dialog box.

**Script File:**

This field is where you specify the Script File that should be used when communicating with this Mail Service.

**Your Name:**

This field is you specify your "Real Name" as known by this Mail Service. This is usually listed somewhere in email messages that you receive.

**Baud:**

This field is where you select the speed that you want your modem to operate at for this Mail Service. Check your modem documentation for more information.



**Parity, Length, Stop:**

These fields are where you select the modem settings for this Mail Service. Check with your Mail Service on what values are appropriate for that service.

**Port:**

This field is where you select the port to which your modem is connected, which can be either **COM1**, **COM2**, **COM3**, or **COM4**. See your computer's documentation for more information.

**Browse:**

Pressing this button will cause a File Dialog to appear, allowing you to choose the Script File for this Mail Service.

## Script Files

Unlike most email programs which support only one type of mail service, **RFD Mail** can be customized to operate with most any ASCII-based electronic mail service.

When you dial in to a Mail Service to send or receive mail, **RFD Mail** uses a special ASCII text file (called a **Script File**) which contains the instructions on exactly how to interact with that service. Currently there are script files for CompuServe, GEnie, MCI Mail, World Unix, and The Direct Connection accounts, which means that you can use **RFD Mail** "out of the box" for sending and receiving mail from these types of services.

If you subscribe to another service (a BBS for example) which provides electronic mail, you are free to write your own script for that service. This would enable you to put that service into the Post Office as a source and destination for mail.

For information on how to write your own scripts, see the topics: Script File Format and Script Overview.

## Script File Format

A script file is an ASCII text file, which means that you can create and modify script files using any simple text editor (Windows Notepad, for example). A Script File consists of a Format Clause, followed by a collection of named **States**, each of which has a series of statements and exit-clauses. So the normal operation of a Script File is to enter a state, whereby one or more statements are executed (for example, to send a command to the Mail Service). The script then waits for an exit condition to become true (for example, a response arriving from the Mail Service), whereupon control passes to the state specified by the corresponding exit clause.

The format for each state is as follows:

```
Begin STATE-NAME
    statement
    statement
    ...
    exit-clause
    exit-clause
    ...
End
```

A sample Script State might be:

```
Begin SEND_DOWNLOAD_COMMAND
    Transmit 'download/xmodem'
    Cr
    When 'ready for download' Goto BEGIN_DOWNLOAD
    When 'unrecognized command' Goto SEND_DOWNLOAD_COMMAND
    Timeout 20 Goto RETRY_DOWNLOAD
End
```

In addition, states may be intermingled with Alias statements, which perform simple text-replacement within the script. Note that the Alias statement is the only statement that can (and must) occur outside of a state definition.

### See also:

[Alphabetic List of Script Commands](#)

## Alphabetic List of Script Commands

Script Commands are case-sensitive, and occur only in the context of State Definitions. Each statement, exit clause, and variable is listed below:

Statements:

Alias  
Break  
Caption  
ClearIndex  
Confirm  
Control  
Cr  
CreateCC  
Download  
Exit  
Hangup  
NextIndex  
NewLetter  
Transmit  
Upload

Exit Clauses:

CarrierLoss  
If  
Timeout  
When

Variables:

INDEX  
LETTER  
PASSWORD  
SERVICENAME  
USERNAME  
YOURNAME

**See also:**

Script Overview

# Alias

Usage:

## **Alias *alias-name word***

This statement creates an alias called **alias-name** to be the text value **word**. From this point in the script file on, you may enclose the **alias-name** in percent (%) signs anywhere a space-delimited or quote-delimited word may occur, and the value **word** will be substituted in its place. Note that this is the only statement which **must** appear **outside** of a state definition.

A good example of a use for aliases is when the script must wait on the same prompt (using When clauses) in many states throughout the script. An alias can be created for the prompt at the beginning of the script, and if the prompt ever changes, it only affects the script in one location. For example:

```
Alias loginprompt '\nUser ID: '  
Begin DIRECT  
    Caption 'connected'  
    Control C  
    When %loginprompt% Goto USERNAME  
    Timeout 3 Goto DIRECT  
End
```

Another use of aliases is to affect the flow of control within the script based on some simple values. For example, an alias can be used to affect the type of login sequence which will be used. This is convenient for users as they only need to change the script in one place to determine which login type will be used. The following example causes a script to branch to the SPRINT state on startup, but could be easily changed by modifying the **connecttype** alias:

```
Alias connecttype SPRINT  
Begin START  
    If TRUE Then %connecttype%  
End  
Begin SPRINT  
    Caption 'connected'  
    Transmit '@'  
    Timeout 1 Goto SPRINTCR  
End
```

See the script files for the supported Mail Services for more examples.

## **Break**

Usage:

### **Break**

This command simply sends a 350-millisecond line break to the modem.



## Caption

Usage:

**Caption** '*caption text*'

This command changes the Title Bar of the Modem Window to be the specified text. Use this command to provide feedback to the user when a "notable event" has occurred.

Example:

```
Caption 'Delivered Letter'
```

## **ClearIndex**

Usage:

### **ClearIndex**

This command resets the value of the \$INDEX variable to zero.

### **See also:**

NextIndex

## Confirm

Usage:

**Confirm** *CONDITION [Successful | Unsuccessful]*

This command is used to confirm the status of the most recently uploaded or download letter.

If **CONDITION** is **LETTER.SENT**, then a confirmation of **Successful** causes the letter to be removed from the Mail Bundle. The letter is then either discarded or placed in the In Box, depending upon what the user chose in the Preferences Dialog. A confirmation of **Unsuccessful** causes the letter to be marked as FAIL in the Mail Bundle.

If **CONDITION** is **LETTER.RECEIVED**, then a confirmation of **Successful** causes the letter to be scanned for the subject line and sender (using the Format Clause in the script file) and the letter is then placed in the In Box.

Example:

```
Confirm LETTER.RECEIVED Successful
```

**See also:**

[Script Overview](#)

## Control

Usage:

### Control *CHAR*

This statement causes the Control Character *CHAR* to be sent over the modem. Control characters are essentially the ASCII value of the letter minus 64. For example, the following statement sends the value 3 over the modem:

```
Control C
```

## **Cr**

Usage:

### **Cr**

This command causes a carriage-return character (ASCII 13) to be sent over the modem. This is equivalent to the statement:

`Control M`

# CreateCC

Usage:

**CreateCC *maxitems maxlen Delimiter 'delim'***

This statement formats a string (accessed using the `$LETTER.CC` variable) based on the CC list for the current letter. The string consists of the addresses of all the people in CC list, separated using the first character in the `delim` string. The `maxitems` field instructs the script to only create a string which contains up to the specified number of addresses. The `maxlen` field instructs the script to only create a string which is no longer than the specified length. If the CC list would create a string which exceeds the specified `maxitems` or `maxlen`, then the number of addresses pulled off the CC list is reduced to fit the string to the size restrictions. Specifying zero for either of these fields indicates that there is no restriction.

The optional second character of the `delim` string specifies what character should be appended to the string if the entire CC list will not fit the size restrictions. This allows CC strings to be built that signal the Mail Service that more CC information is to be sent (a trailing semicolon signals this to CompuServe, for example).

If CreateCC does not use the entire CC list in the string, then the `LETTER.CC` condition will remain true. The next time CreateCC is executed, it will begin the string with the first unsent address in the CC list.

Example:

```
;This loop sends comma-separated addresses to the CC prompt,
;with a maximum line length of 80 and a maximum of five
;addresses per line. Each line is terminated with a semicolon
;if and only if there are more CC addresses.
Begin IF_CC
  If LETTER.CC Then BUILD_CC
  When 'CC:' Goto DONE_CC
End
Begin BUILD_CC
  CreateCC 5 80 Delimiter ',;'
  When 'CC:' Goto SEND_CC
End
Begin SEND_CC
  Transmit $LETTER.CC
  Cr
  If LETTER.CC Then BUILD_CC
  When 'Subj:' Goto SUBJECT
End
Begin DONE_CC
  Cr
  When 'Subj:' Goto SUBJECT
End
```

**See also:**

[Script Overview](#)

# Download

Usage:

## **Download protocol ['terminator'] Then state1 Else state2**

This command initiates a download using the specified protocol (currently the [XMODEM](#), [YMODEM](#), [ZMODEM](#), [KERMIT](#), and [ASCII](#) protocols are supported). The 'terminator' string is optional and may only be specified for [ASCII](#) transfers. If the transfer was successful, then control passes to state [state1](#), otherwise control passes to [state2](#).

The data is stored in a temporary file (usually [mail.tmp](#)) which will become a new letter if a Confirm LETTER.RECEIVED statement is executed, validating the success of the transfer.

An ASCII download merely captures all text from the modem, starting with the first ASCII character greater than 32 (ASCII space), and is considered finished when the line is quiet for 5 seconds. If the 'terminator' string is specified, then the downloaded letter is considered to be the text captured from the start of the transfer up to the line which begins with the specified string. [GEnie](#), for example, always places the word '=END=' after the last line of the letter.

Examples:

```
Download XMODEM Then DOWNLOAD_SUCCESS Else DOWNLOAD_FAILURE
Download ASCII '=END=' Then DOWNLOAD_SUCCESS Else DOWNLOAD_FAILURE
```

## **Exit**

Usage

### **Exit**

This command causes the script to terminate, closing the Modem Window, and dumping out a transcript of the session to the file [modem.log](#). If any letters remain in the current Mail Bundle, they are placed back where they originated (either the desktop or the Out Box).



# Hangup

Usage:

## Hangup

This command causes the modem to hangup the line, and the script to terminate.

### See also:

[Exit](#)

## **NextIndex**

Usage:

### **NextIndex**

This statement increments the value of the \$INDEX variable by one.

**See also:**

ClearIndex

## NewLetter

Usage:

### NewLetter

This command signals to **RFD Mail** that the next letter in the Mail Bundle is to be processed. All commands and variables which refer to the current letter in the bundle (Upload, Confirm, If, LETTER, CreateCC) will now operate on the next letter.

### See also:

[Script Overview](#)

# Transmit

Usage:

**Transmit (nn) [*'string'* | *\$variable*]**

This command sends the specified *'string'* or *\$variable* out the modem, without adding a carriage-return (use Cr for that purpose).

The optional parameter (nn) limits the number of characters transmitted to the number nn. A use for this is found in the CompuServe script, where the number of characters sent for the subject line is limited to 40, which is a limit imposed by CompuServe.

Examples:

```
Transmit 'download/pro:xmodem'  
Transmit (40) $LETTER.SUBJECT
```

**See also:**

\$LETTER  
\$PASSWORD  
\$SERVICENAME  
\$USERNAME  
\$YOURNAME

# Upload

Usage:

**Upload *protocol* [*StripCR* | *StripLF*] [*ExpandLines*] Then *state1* Else *state2***

This command initiates an upload of the current letter in the Mail Bundle using the specified protocol (currently the [XMODEM](#), [YMODEM](#), [ZMODEM](#), [KERMIT](#), and [ASCII](#) protocols are supported). The optional [StripCR](#) and [StripLF](#) modifiers instruct the upload to strip ASCII 13 and ASCII 10 characters from the letter, respectively. The optional [ExpandLines](#) modifier instructs the upload to expand each blank line to contain a single space ([GEnie](#) requires this when uploading letters). If the transfer was successful, then control passes to state [state1](#), otherwise control passes to [state2](#).

An ASCII upload is considered finished when the transmit buffer (a 256-byte buffer) clears, and the receive buffer is empty for two seconds. This guarantees that when this statement completes, the mail service has actually received all bytes of the upload (with none being held locally in the transmit buffer), which could cause false timeouts in the script. It also guarantees that the mail service has finished echoing the uploaded characters ([CompuServe](#) does this, for example), which could potentially confuse later [When](#) exit clauses. As a result, you may see the message "ASCII: send complete" in the Modem Window for a short time while both the transmit and receive lines quiet down.

Note that a [Confirm](#) statement is necessary to signal to **RFD Mail** that a letter transmission was successful, as a successful upload does not imply the former.

Example:

```
Upload XMODEM Then UPLOAD_SUCCESS Else UPLOAD_FAILURE
```

**See also:**

[Script Overview](#)

## CarrierLoss

Usage:

### **CarrierLoss Goto state**

This exit clause causes a state transition to [state](#) when the modem detects that the Mail Service has disconnected. If a state does not have a CarrierLoss exit clause, then loss of carrier causes an Error Dialog Box to appear, and the script terminates.

Example:

```
CarrierLoss Goto END_PROGRAM
```

# If

Usage:

## **If *condition* Then *state***

This exit clause passes control to state [state](#) if the specified [condition](#) is true. The valid conditions are listed below:

### **MORE\_LETTERS**

This condition is true if there is at least one pending letter in the current Mail Bundle waiting to be delivered. See [NewLetter](#) and [Script Overview](#) for more details.

### **FETCHING**

This condition is true if: (1) the user has caused this script to run by selecting one of the [Fetch...](#) menu entries, or (2) the Always Fetch New Mail option in the [Modem Preferences Dialog](#) is enabled.

### **LETTER.CC**

This condition is true if there is at least one additional destination specified in the CC list that has not been formatted by the [CreateCC](#) statement.

### **LETTER.HANDLING**

This condition is true if the Handling string (specified in the Letter Options Dialog) is not empty.

### **LETTER.RECEIPT**

This condition is true if the Letter Options Dialog specified [Return Receipt](#) for this letter.

This exit clause is unique in that it is executed immediately upon entering the state in which it resides (after any preceding statements of course). Most other exit clauses occur in the idle time between executing a state's script statements and when that exit clause is triggered.

Examples:

```
If MORE_LETTERS Then SEND_A_LETTER
If FETCHING Then FETCH_MAIL
```

# Timeout

Usage:

## **Timeout *nn* Goto *state***

This exit clause is invoked only if *nn* seconds elapse and no other exit clause is invoked. If *nn* seconds elapse, then control passes to state *state*.

Example:

```
Timeout 30 Goto GIVE_UP
```



## When

Usage:

### When *'string'* Goto *state*

This exit clause is invoked if the connected Mail Service sends the specified *'string'*. If this occurs, control passes to the state *state*.

The *'string'* is straight ASCII text, with one addition: the *'\n'* tuple. If there is a *'\n'* at the beginning or end of the string, then the **When** statement is triggered if the string occurs at the beginning or end of a line, respectively. This is useful for setting up watches for command-line prompts, which always occur at the beginning of a line.

Examples:

```
When 'You have mail' Goto NEW_MAIL_WAITING  
When '\nUser ID:' Goto USERNAME
```

## Script Overview

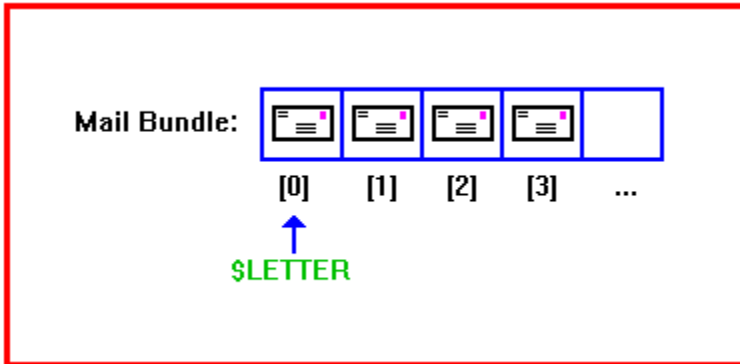
A script file for **RFD Mail** must be written to accomplish two separate tasks: sending a Mail Bundle to a target Mail Service, and receiving any new mail from that Mail Service.

### Receiving Mail:

To receive mail, a script file typically must enter the service's mail section, and detect the presence of new mail. If there is new mail, then the script must download each letter one by one, verifying the transfer using the Confirm statement. Upon each successful confirmation, the script file's filter section will be used to extract out information from the letter.

### Sending Mail:

Outgoing mail is packaged in a Mail Bundle, which is merely a collection of letters which are going to the same Mail Service. The Mail Bundle is diagrammed below:



Note the \$LETTER variable, which always references the "current" letter in the bundle. A script file must use this variable to transfer the letter to the Mail Service, using the Upload, CreateCC, and Transmit commands. When the transfer has been confirmed successful, the Confirm statement can be used to signal that the letter has been sent, and the NewLetter statement will advance the \$LETTER reference to the next letter in the bundle.

## **\$INDEX**

This variable is a simple numeric counter which is always used in the context of a Transmit statement. A typical use of this counter is to download letters one by one from a service which indexes the newly received letters (GEnie and MCI Mail, for example).

Example:

```
Begin FETCH_MAIL
  Transmit 'list '
  Transmit $INDEX
  Cr
  When 'Item' Goto DOWNLD_LETTER
  When 'exceeds last' Goto NO_MORE_MAIL
  Timeout 30 Goto GIVE_UP
End
```

**See also:**

ClearIndex

NextIndex

## **\$LETTER**

This variable refers to either the current letter in a Mail Bundle (when sending mail) or to the current letter being received (when fetching mail). It contains six fields, which are as follows:

### **\$LETTER.SENT**

This is always used in the context of a Confirm statement, and is used to confirm the success or failure of the letter delivery for the current letter.

### **\$LETTER.RECEIVED**

This is always used in the context of a Confirm statement, and is used to confirm the success or failure to receive a letter from the Mail Service.

### **\$LETTER.SUBJECT**

This is always used in the context of a Transmit statement, and is used in place of a literal string to cause the script to send the subject of the current letter.

### **\$LETTER.DEST.USERNAME**

This is always used in the context of a Transmit statement, and is used in place of a literal string to cause the script to send the destination mail address of the current letter.

### **\$LETTER.FILENAME**

This variable is always used in the context of a Transmit command, and is used in place of a literal string to cause the script to send the name of the temporary file used to send or receive the current letter (usually "mail.tmp").

### **\$LETTER.CC**

This is always used in the context of a Transmit statement, and is used in place of a literal string to cause the script to send a portion of the CC list, as formatted by the most recent CreateCC statement.

### **\$LETTER.HANDLING**

This is always used in the context of a Transmit statement, and is used in place of a literal string to cause the script to send the Handling string for this letter, as specified in the Letter Options Dialog.

### **See also:**

[Script Overview](#)

## **\$PASSWORD**

This variable is always used in the context of a Transmit command, and is used in place of a literal string to cause the script to send the user's password for this Mail Service as specified in the Mail Service Dialog.

## **\$SERVICENAME**

This variable is always used in the context of a Transmit command, and is used in place of a literal string to cause the script to send the name of this Mail Service as specified in the Mail Service Dialog.

## **\$USERNAME**

This variable is always used in the context of a Transmit command, and is used in place of a literal string to cause the script to send the user's user-id for this Mail Service as specified in the Mail Service Dialog.

## **\$YOURNAME**

This variable is always used in the context of a Transmit command, and is used in place of a literal string to cause the script to send the "real name" of the user (as known by this Mail Service), specified in the Mail Service Dialog.



## Mail Service

**RFD Mail** alone does not actually perform the delivery of email between users. This must be done by another computer (or computers, in some instances) that RFD Mail accesses using a modem. This computer is referred to as a **Mail Service**. **RFD Mail** acts as a "front-end" to a mail service, allowing you to compose and read your letters "off-line", without tying up your phone and accruing unnecessary connect charges.

Unlike many other electronic-mail programs which support a single type of mail service, **RFD Mail** transparently handles sending and receiving mail from an unlimited number of different mail services. The mail services provided by CompuServe, MCI Mail, GEnie, World Unix, and The Direct Connection are currently supported, and new mail services can be added to the Post Office by writing a Script File which handles communications with that mail service.

Before **RFD Mail** can operate with a mail service, you need to enter your account information for that service. This is accomplished by creating or editing a mail service in the Post Office Window, which brings up the Mail Service Dialog for that mail service.

### See also:

Delivering Mail

Fetching Mail

## Post Office:

The Post Office is where **RFD Mail** keeps a list of Mail Services which you are able to send mail to and receive mail from. At any time you can see the list of currently available services by opening the Post Office Window located on The Desktop. This window contains four items:

- The **New** Button.
- The **Edit** Button.
- The **Delete** Button.
- The **Post Office List**, which shows the currently available services.

To create a new Mail Service, press the **New** button, which will bring up a mostly empty Mail Service Dialog. Simply fill in the fields of this dialog box, press the **OK** button, and the new service will be added to the Post Office.

To edit an existing Mail Service, select the entry you wish to change and press the **Edit** button. This will bring up a Mail Service Dialog on the Mail Service you selected. Make the changes you desire and press the **OK** button.

To delete a Mail Service, select the entry you wish to delete and press the **Delete** button. A confirmation dialog will appear, and if you select **Yes**, the Mail Service will be removed from the Post Office. Note that you will be unable to delete a Mail Service if either of the following are true:

- There are any entries in the Address Book which refer to the selected Mail Service.
- There are any letters on the desktop or in any folders which refer to the selected Mail Service.

## Shortcuts:

- You can edit a Mail Service simply by double-clicking on the desired entry in the Post Office.

## Mail Service Dialog

This dialog box allows you to specify the information necessary for **RFD Mail** to communicate with a Mail Service. This information includes dial-up information about the service (phone number, modem settings, etc), information about your account (username and password), and the Script File to use when communicating with this service. The dialog appears below:



*(click the mouse over the part of the dialog you need help on)*

**Connection:** (not shown)

This field determines whether the connection is assumed to be a modem, or a direct connection. If it is set to **modem**, **RFD Mail** dials the specified phone number and waits for a connection. If it is set to **direct**, **RFD Mail** skips the dial sequence and immediately begins executing the script.

**Signature:** (not shown)

This field determines what signature should be used by default in letters sent to this service.

### **IMPORTANT:**

You should verify that the Script File specified in the dialog matches the Mail Service. For the currently supported services, here is a table of the correct script files:

<u>GEnie</u>	genie.scr
<u>CompuServe</u>	cserve.scr and cserve_a.scr
<u>MCI Mail</u>	mcimail.scr
<u>World Unix</u>	unix.scr and unix_cis.scr
<u>The Direct Connection</u>	tdc.scr

## **Address Book**

The Address Book is where you maintain the list of people with whom you frequently exchange mail. Each entry contains information necessary to send mail to and identify mail from a particular person. This consists of three items: Name, Address, and Mail Service.

Once a person is in the Address Book, you can address letters using their name, or by selecting it from the supplied list in a New Letter Window. In addition, when a letter is received from a person who is in the Address Book, their real name will be displayed rather than their mail address.

The Address Book is also used to save disk space when storing letters. If a letter in a folder is sent to or received from a person who is in the Address Book, disk space is conserved by recording a **reference** to the Address Book rather than storing the person's entire name and address. The disadvantage to this scheme is that deleting a person from the Address Book may take longer than you expect.

### **See also:**

[Address Book Window](#)

[Mail User Dialog](#)

[Importing/Exporting the Address Book](#)

## Address Book Window:

At any time you can see the list of currently known people by opening the Address Book Window located on The Desktop. This window contains four items:

- The **New** Button.
- The **Edit** Button.
- The **Delete** Button.
- The **Address List**, which shows the currently known people.

To create a new person, press the **New** button, which will bring up a mostly empty Mail User Dialog. Simply fill in the fields of this dialog box, press the **OK** button, and the new entry will be added to the Address Book.

To edit an existing person, select the entry you wish to change and press the **Edit** button. This will bring up a Mail User Dialog on the entry you selected. Make the changes you desire and press the **OK** button.

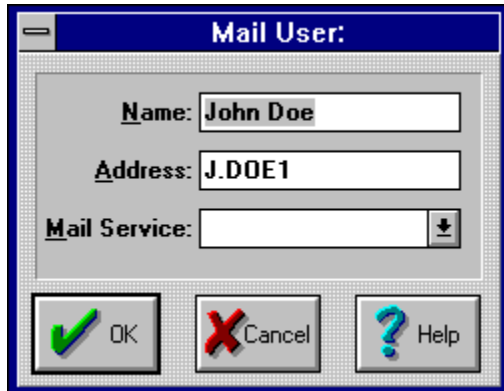
To delete a person, select the entry you wish to delete and press the **Delete** button. A confirmation dialog will appear, and if you select **Yes**, the person will be removed from the Address Book. Note that this may take a long time, as **RFD Mail** must search all folders for letters which reference this person, and will update each matching letter such that it no longer refers to the deleted Address Book entry.

### Shortcuts:

- You can edit a person simply by double-clicking on the desired entry in the Address Book.
- You can quickly grab an address from a letter using the Letter|Grab Address menu option,

## Mail User Dialog

The Mail User Dialog allows you to create or change information about another person with whom you exchange mail. This dialog is accessible from the [Address Book Window](#), which is used to maintain the [Address Book](#).



*(click the mouse over the part of the dialog you need help on)*

**Name:**

This is the name that **RFD Mail** will display in the addressee fields of the Letter Window and Folder Windows. It can be any name you wish, with the restriction that each name in the Address Book must be unique.

**Address:**

This is the email address as understood by the Mail Service that this person subscribes to, and is what **RFD Mail** will specify to the mail service when sending a letter to this person.

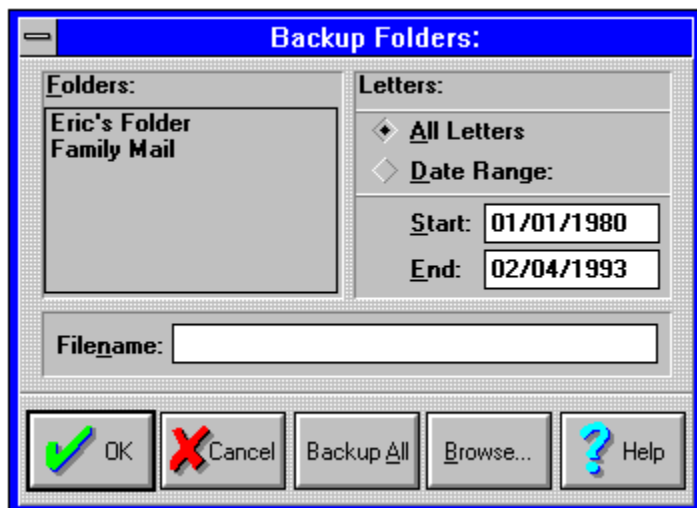


**Mail Service:**

This is the Mail Service that **RFD Mail** will call to send mail to this person.

## Backup Dialog

The Backup Dialog allows you to backup some or all of your letters to a backup file. Once backed up these letter can be restored at a later date, either to the same **RFD Mail** installation, or to an installation on another computer.



*(click the mouse over the part of the dialog you need help on)*

### See also:

[Backup and Restore](#)

**Folders:**

Use the left mouse button to select the folders you wish to backup in this box. You can select more than one folder.

**All Letters:**

Select this button if you want to back up all letters in the selected folders, regardless of the date of the letters.

**Date Range:**

Select this button if you want to back up letters in the selected folder that fall within a specific time period. If you select this button you must then enter the desired starting and ending dates below.

**Filename:**

This field is where you must enter the filename of the backup file you wish to write your letters to. You can also select a file by clicking the **Browse...** button.

**Backup All:**

Click this button if you wish to backup all letters in all folders. This will begin the backup process, so you must have selected a file in the **Filename** field before selecting this option.

**Browse:**

Click this button if you wish to graphically select the backup file to write. This will cause a File Open Dialog box to appear.



## Restore Dialog

The Restore Dialog allows you to restore letters from a backup file, which has been previously created using the [Backup Dialog](#).



*(click the mouse over the part of the dialog you need help on)*

### **See also:**

[Backup and Restore](#)

**Filename:**

This area shows the current backup file being displayed by this dialog. You can change the file by selecting the **Browse...** button.

**Folders:**

Use the left mouse button to select the folders you wish to restore in this box. You can select more than one folder.

**All Letters:**

Select this button if you want to restore all letters in the selected folders, regardless of the date of the letters.

**Date Range:**

Select this button if you want to restore letters in the selected folder that fall within a specific time period. If you select this button you must then enter the desired starting and ending dates below.

[Restore All:](#)

Click this button if you wish to restore all letters in all folders contained in the backup file.

**Browse:**

Click this button if you wish to reselect the backup file from which to restore. This will cause a File Open Dialog box to appear.

## Writing Mail

A fundamental aspect of **RFD Mail** is the ability to write letters which will be sent to one or more users of one of the Mail Services to which you subscribe. You begin this process by Creating a Letter, which results in the creation of a New Letter Window where you generate and/or edit the subject and body of your letter. You also use the New Letter Window to Address the Letter, which specifies to whom the letter will be delivered.

Once the letter is written and addressed, you need to Deliver the Letter, either singly or with a group of other letters. This will cause **RFD Mail** to dial the Mail Service to which the letter was bound, transfer the body of the letter to that service, then instruct the service to deliver the letter to the people you specified. When the letter has been successfully delivered, it will either be discarded, or a copy of it will be filed into the In Box (depending upon what was specified in the Preferences Dialog).



## Creating a Letter

There are four ways to create a letter: New, Reply, Blank Reply, and Forward. All of these techniques result in a New Letter Window, but the initial contents of that window varies for each case.

### Create a New Letter

This creates a letter with an empty address, subject., and body. A New Letter can be created by either selecting the Letter|New menu option, or by pressing the **New Letter** button on The Desktop.

### Create a Reply

This option is only available when a letter is selected on the desktop, or is selected in the current folder on the desktop. You may select this option by selecting the Letter|Create Reply menu option, pressing the **Reply To** button, or by pressing **Ctrl+R** key. This creates a letter with the following properties:

- The address is the same as the sender of the original letter.
- The subject is the same as the original letter, but prepended with the text: "Re: ".
- The body contains the original letter prefixed with the **Quote String** as specified in the Preferences Dialog. If the **Quote String** is blank, the original letter is copied verbatim into the new letter. **Note:** if adding the **Quote String** causes lines to exceed the **Word Wrap** setting (also specified in the Preferences Dialog), those lines will simply be truncated.

### Create a Blank Reply

This option is only available when a letter is selected on the desktop, or is selected in the current folder on the desktop. You may select this option by selecting the Letter|Blank Reply menu option, pressing the **Reply To** button while holding down a **Shift** key, or by pressing **Shift+Ctrl+R** key. This creates a letter with the following properties:

- The address is the same as the sender of the original letter.
- The subject is the same as the original letter, but prepended with the text: "Re: ".
- The body is empty.

### Create a Forwarded Letter

This option is only available when a letter is selected on the desktop, or is selected in the current folder on the desktop. You may select this option by selecting the Letter|Forward menu option, or by pressing the **Ctrl+F** key.. This creates a letter with the following properties:

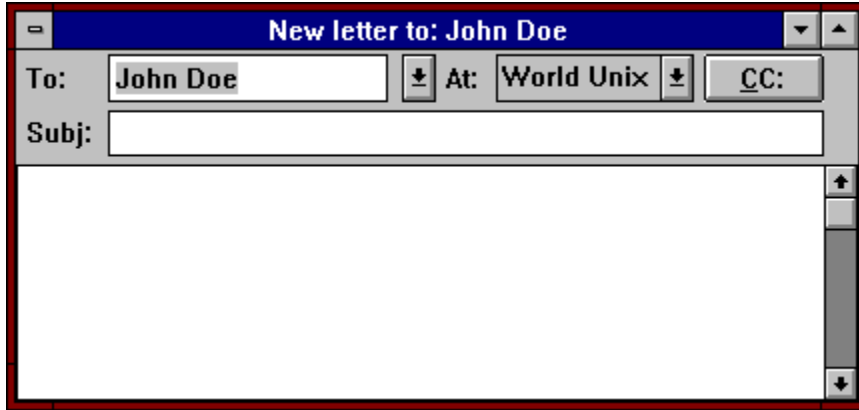
- The address is blank.
- The subject is the same as the original letter.
- The body is the same as the original letter.

### See also:

Writing Mail  
Delivering a Letter

## New Letter Window:

The New Letter Window allows you to edit letters that will be sent to another person using electronic mail. It consists of three parts: the address, subject, and body. A typical New Letter Window appears below:



*(click the mouse over the part of the window you need help on)*

**Options Button:** (not shown)

Pressing this button will bring up a Letter Options Dialog, which will allow you to set various options on this letter, including the signature to use.

Once you have finished entering the address, subject, and body, there are several options:

- Deliver the letter immediately using the Mail|Deliver Letter menu entry.
- Put the letter in the Out Box for later delivery using the Letter|To Out Box menu entry.
- Delete the letter using the Letter|Delete menu entry.
- Keep the letter on the desktop.
- Export the letter to a text file.

### Keyboard Shortcuts:

- You can either type an address directly into the To: Field, or you can use the arrows and **PgUp/PgDown** keys to select an Address Book entry from the drop-down list.
- When typing in the name of a person in the Address Book, the first entry which matches will be filled in for you automatically. Just keep typing until the correct entry is displayed.
- You can use **TAB** and **shift-TAB** to move the focus between the fields of this window. The only exception is when you move the focus to the body of the letter; in this case you must use the mouse to move the focus out to another field.
- Hitting the **Alt-C** key will bring up the Carbon Copy Dialog.
- Hitting the **Alt-O** key will bring up the Letter Options Dialog.

### See also:

Writing Mail  
Addressing a Letter  
Delivering a Letter

## Addressing a Letter

A letter can specify one or more people to whom the letter should be delivered, **all** of whom must be members of the same Mail Service. If you need to send the same letter to people on more than one Mail Service, simply forward a copy of the letter to each set of people on the additional Mail Services.

### Specifying a Single Address

In this case, simply use the **To:** and **Via:** fields in the New Letter Window to specify the address and Mail Service of the person to whom the letter should be delivered.

### Specifying Multiple Addresses

In this case, specify the primary address as described above, then use the **CC:** button to bring up a Carbon Copy Dialog. Fill in the **CC List** in the dialog and press the **OK** button when the list is complete.

### See also:

Writing Mail  
Delivering a Letter

## Delivering a Letter

Once a letter has been written and addressed, it needs to be delivered to the person(s) to whom it is addressed. **RFD Mail** allows you to deliver a letter immediately, or to file letters into the Out Box to be delivered as a group.

### Delivering a Letter Immediately

To deliver a letter immediately, select its New Letter Window or its entry in the Out Box. Once selected, either select the Mail|Deliver Letter menu option, or press the **Deliver Letter** button.

### Filing a Letter to the Out Box

To file a letter to the Out Box, select its New Letter Window. Once selected, there are three ways to file the letter to the Out Box:

- Select the Letter|To Outbox menu option.
- Press the **To Outbox** button.
- Minimize the New Letter Window and drag the icon to the Out Box Window.

### See also:

[Writing Mail](#)

[Addressing a Letter](#)

[Delivering Mail](#)

**To:**

Type the person's email address, or their name as listed in the Address Book. You can also use the adjacent button to drop down a list of Address Book entries, which if selected will also cause the **Via:** field to be filled in automatically. In addition, if you begin to type the name of a person in the Address Book, the first entry which matches what you type will be filled in automatically.

**Via:**

Use the adjacent button to drop down a list of currently known Mail Services. Select the one that you wish to use to deliver this letter. Note that if you select an address using the **To:** field's drop-down list, this field will be filled in automatically.

**Subject:**

Enter the subject of your letter here . Note that some Mail Services limit the length of the subject. CompuServe, for example, limits the length to 40 characters.

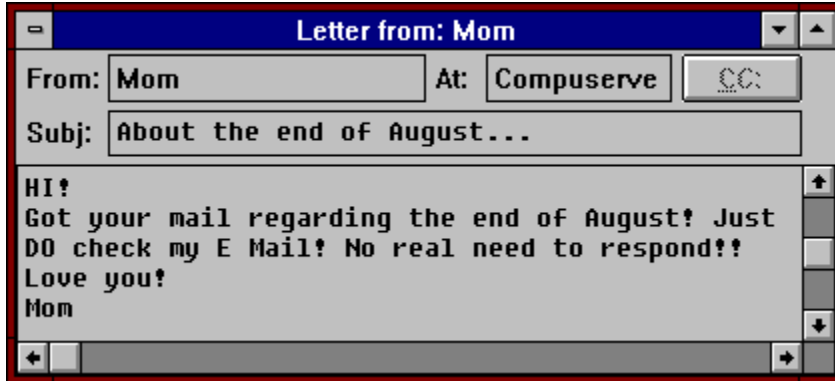
**Body:**

Enter the body of your letter here. Note that some Mail Services may have a limit on the length of the letter you may send. **RFD Mail's** limit is approximately 60,000 characters.



## Letter Window:

The Letter Window allows you to read mail that has arrived from another person. Its layout is similar to the [New Letter Window](#), except that none of its fields are editable. A sample Letter Window appears below:



*(click the mouse over the part of the window you need help on)*

You have several options once a letter is in a Letter Window:

- Leave the letter on [The Desktop](#).
- Delete the letter by selecting the [Letter|Delete](#) menu option, or by pressing the **Delete Letter** button.
- File the letter to a [folder](#) by either selecting the [Letter|To Folder](#) menu option, or by minimizing the letter and dragging it to the desired folder.
- [Export](#) the letter to a text file.

**From:**

This field displays the email address of the person who sent this letter. If that person is in the Address Book, then the name you specified in that person's entry will be displayed instead,

**Via:**

This field displays the Mail Service which was called to fetch this letter.

**Subject:**

This field displays the subject of the letter.

**Body:**

This area contains the body of the letter. Use the scrollable to move around the text.

**Flow:**

This field allows you to select the type of Flow Control that this Mail Service uses. Note that XON/XOFF is only recommended for Mail Services which use either ZMODEM or ASCII file transfers.

**CC:**

Press this button to bring up a list of people to whom were sent a Carbon Copy of this letter.

**CC:**

Pressing this button will bring up a CC Dialog, allowing you to create and/or edit the current list of users who receive a Carbon Copy of this letter. When you have at least one entry in the CC list, this button will show the current size of the list in parenthesis. For example: "CC: (2)".

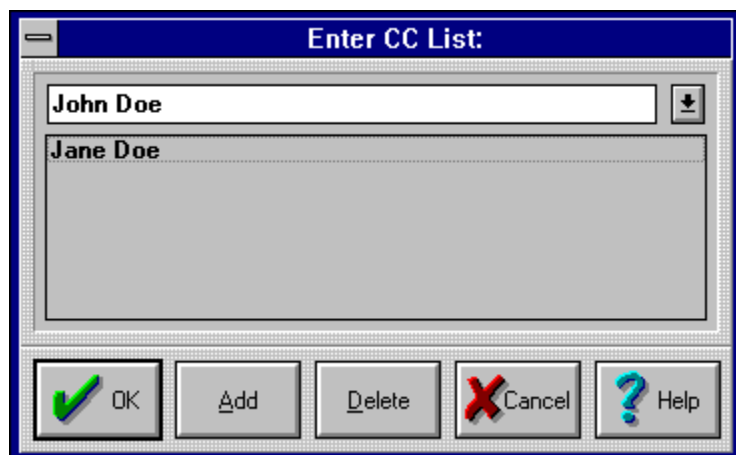


**Flow:**

This field allows you to select the flow-control to be used when connected with this Mail Service. Currently only Xon/Xoff and Rts/Cts controls are supported.

## Carbon Copy Dialog

The Carbon Copy Dialog allows you to create and edit a list of additional destinations to a new letter. This dialog is accessible only from a [New Letter Window](#).



*(click the mouse over the part of the dialog you need help on)*

### IMPORTANT:

The letter will be sent **only** to those addresses listed in the CC List (the list box in the center of the dialog). If you are only sending the letter to one additional person, be sure to press the **Add** button after entering (or selecting) their name in the Address Field. Also note that you may only send additional copies of the letter to people who are on the same Mail Service as the main recipient of the letter. A side-effect of this is that the drop-down list may be only a subset of the [Address Book](#).

### Keyboard Shortcuts:

- As in the New Letter Window, you can type in an address directly, or use the arrows and **PgUp/PgDown** keys to browse entries in the drop-down list.
- Also as in the New Letter Window, you can type the first part of an address, and the remainder will be filled in automatically for you.
- Hitting **ENTER** after making a change to the Address Field will cause that address to be added to the list (as if you hit the **Add** button).
- Hitting **ENTER** again (without changing the address field) is equivalent to hitting the **OK** button.

**Address Field:**

Enter addresses directly or select addresses from the drop-down list into this field. Use the **Add** button to add the current address to the CC list.

**CC List:**

This list box contains the list of additional destinations for the letter. Use the **Delete** button to delete the currently selected addresses. Double-click an address to move an address from the list out to the Address Field for further editing.

**Add Button:**

Clicking this button will add the address in the Address Field to the CC List.

**Delete Button:**

Clicking this button will delete the currently selected address(es) from the CC List.

## The Desktop

The main window of **RFD Mail** (also known as "the desktop") is where you perform all of your email-related activities. Pictured below is a sample desktop:



*(click the mouse over the part of the desktop you need help on)*

The desktop initially contains four types of windows:

- Post Office
- Address Book
- In Box
- Out Box

As you send and receive mail, the desktop will additionally contain one or more of the following types of windows:

- New Letter
- Letter
- Folder

File Menu:

This menu contains entries to allows you to perform file-related operations.



Edit Menu:

This menu contains entries related to text editing in New Letter Windows and any text-entry field that occurs within **RFD Mail**.

Letter Menu:

This menu contains entries which allow you to perform operations on letters, either in their own window or contained in a folder.

Mail Menu:

This menu contains entries which allow you to send and receive mail to and from any of the supported Mail Services.

Folder Menu:

This menu contains entries which allow you to manage folders of letters.

**New Letter:**

Pressing this button is equivalent to selecting the Letter|New menu option.

**Reply To:**

Pressing this button is equivalent to selecting the Letter|Create Reply menu option. If you hold down a **Shift** key, it is equivalent to selecting the Letter|Blank Reply menu option.

**To Outbox:**

Pressing this button is equivalent to selecting the Letter|To Outbox menu option.

**Delete Letter:**

Pressing this button is equivalent to selecting the Letter|Delete menu option.



**Deliver Letter:**

Pressing this button is equivalent to selecting the Mail/Deliver Letter menu option.

**Deliver Outbox:**

Pressing this button is equivalent to selecting the Mail/Deliver Out Box menu option.

**Fetch:**

Pressing this button is equivalent to selecting the Mail|Fetch from Default menu option.

**Fetch All:**

Pressing this button is equivalent to selecting the Mail|Fetch from All menu option.

**Abort Phone:**

Pressing this button is equivalent to selecting the Mail|Abort Phone Connection menu option.

Post Office:

This window allows you to manage the Mail Services that you send mail to and receive mail from.

Address Book:

This window allows you to manage the names and addresses of people with whom you frequently correspond.

In Box:

This window is a special folder, which contains letters you have received, and letters which you have recently sent.



Out Box:

This window is a special folder which contains letters you have written that are waiting to be delivered.

Folders:

A folder window contains letters which you have filed for future reference.

## Backup and Restore

**RFD Mail** allows you to save letters from one or more folders to an external file, from which they can be restored at a later time. This feature can be used to make archival copies of letters for safekeeping, or it can be used to transfer letters from one computer to another.

### Backup

To perform a backup, select the File|Backup menu option, which will bring up a Backup Dialog. Once you have filled in this dialog and pressed **OK**, the letters in the folders you selected will be placed into the file you specified.

**Note:** the disk which will contain the backup file must have enough space to store the file or the backup will not be successful. This is especially important if you backup to a floppy disk, as the program will not prompt you to insert a second disk if the backup file is too large for the first disk.

### Restore

To restore letters from a file previously created using the Backup feature, select the File|Restore menu option, which will bring up a File Selection Dialog. Use this dialog to select the backup file you from which you wish to restore letters. This will bring up a Restore Dialog, showing the names of the folders which are contained in the file you selected. Once you have filled in this dialog and pressed **OK**, the folders you selected will be restored to your desktop.

## Format Clause

A script's Format Clause is used by **RFD Mail** to help extract three important pieces of information from each mail message received from a Mail Service: the **Username** of the sender, the **Real Name** of the sender, and the **Subject Line** of the message. When a script executes a `Confirm $LETTER.RECEIVED Successful` statement, **RFD Mail** scans the letter line-by-line using the Format Clause until it has found these items.

A Format Clause begins with the keyword `Format`, followed by a series of format-lines, and ends with the keyword `Endformat`, as shown below:

```
Format
    format-line
    format-line
    format-line
    . . . .
EndFormat
```

The Format Line is a text pattern, which is a combination of literal text and one or more variable specifiers. There are three valid variable specifiers: **\$SUBJECT\$**, **\$UID\$**, and **\$NAME\$**, which correspond to the **Subject Line**, **Username**, and **Real Name**. Literal text specifies text that the line must match exactly, with the following exceptions:

- A single space in the literal text will match one or more spaces and tabs in the letter.
- The two characters `\n` correspond to the end of the current line.

For example, the Format Line: `Subject: $SUBJECT$\n` matches any line beginning with the text **Subject:**, followed by any number of spaces. The **Subject Line** of the letter will be the first non-space character thereafter, up to the end of the line.

As another example, the Format Line: `From: $NAME$[$UID$]` matches any line beginning with the text **From:**, followed by any number of spaces. The **Real Name** of the sender will be the first non-space character thereafter, up to the character '['. The **Username** of the sender will be the remaining characters, up to the character ']'.

It is legal to have more than one Format Line which specifies the same variable, as shown in the example at the end of this page. In such a case, when scanning a letter **RFD Mail** will simply use the information from the first line which matches one of the Format Lines. If you need more examples of Format Clauses, see the provided script files for the supported Mail Services.

### Example:

```
Format
Reply to: $SUBJECT$\n
Subject: $SUBJECT$\n
Subj: $SUBJECT$\n
From: [$UID$] $NAME$\n
From: $NAME$[$UID$]
Endformat
```

### See also:

[Script File Format](#)

## **Folders:**

As you begin to send and receive mail on a regular basis, you will want a way to organize the letters that will begin to accumulate in the [In Box](#) and on [The Desktop](#). **RFD Mail** provides **Folders** for this purpose. A folder is simply a named window on the desktop which acts as a container and viewer for multiple letters. You can use folders to organize and categorize the letters that you send and receive in any fashion that you choose.

A folder on the desktop is divided horizontally into two sections. The top section contains the list of letters currently in the folder, showing the [date](#), the [destination](#), and the [subject line](#) of the letter. The bottom section contains the [body](#) of the letter that is currently selected in the top section. By scrolling through the top section and selecting letters of interest, you can quickly browse letters that are contained in a folder.

## **See also:**

[Managing Folders](#)

[Managing Letters in Folders](#)

## Managing Folders

There are three basic operations you can apply to folders, which are listed below:

### Creating a Folder

To create a folder, select the Folder|New menu option. This will cause a dialog to appear which allows you to enter the name of the new folder. If you press **OK**, a new Folder Window will appear on the desktop.

### Deleting a Folder

To delete a folder, select the Folder|Delete menu option. This will cause a dialog to appear which request that you confirm the operation. If you press **Yes**, the currently selected Folder Window and **all of its letters** will be removed from the desktop

### Renaming a Folder

To rename a folder, select the Folder|Rename menu option. This will cause a dialog to appear which allows you to enter new name for the currently selected Folder Window. If you press **OK**, the folder's name is updated.

## Managing Mail in Folders

There are several operations that you can apply to the letters contained in folders, which are listed below:

### Deleting a Letter

To delete a letter which is in a folder, first select the letter that you wish to delete. Then, either select the Letter|Delete menu option, press the **Delete Letter** button, or press the **Alt+Del** key. A confirmation dialog will appear, and if you press **Yes**, the letter will be deleted from the folder.

### Moving a Letter to a different Folder

To move a letter to another folder, first select the letter that you wish to move. The letter may now be moved in one of two ways:

- While still holding the left mouse button, drag the mouse to the folder to which you want the letter moved. During the mouse drag you will see the cursor change to a picture of an envelope. When the cursor is over correct location, release the left mouse button.
- Select the Letter|To Folder menu option. This will cause a dialog with the list of folders to appear. Merely select the folder to which you want the letter moved, then press **OK**.

### Moving a Letter to the Desktop

To move a letter from a folder to The Desktop, first select the letter that you wish to move. The letter may now be moved in one of three ways:

- Drag the letter as described above. Only instead of releasing the left mouse button over a folder, release it over an empty spot on the desktop. This will cause a Letter Window with the contents of the selected letter to appear on the desktop.
- Select the Letter|To Desktop menu option. This will cause a Letter Window with the contents of the selected letter to appear on the desktop.
- Double-click a letter in the folder. This will cause a Letter Window with the contents of the selected letter to appear on the desktop.

### Moving a Letter from the Desktop into a Folder

There are two ways to move a letter which is on the Desktop (i.e., in a Letter Window), into a Folder:

- Select the Letter|To Folder menu option as described above.
- Minimize the Letter Window and drag its icon to the folder you wish to move it to.

## The In Box:

The In Box is a special folder which contains letters you have recently sent and recently received. Whenever **RFD Mail** downloads a newly received letter from a Mail Service, it is always placed in the In Box. In addition, when **RFD Mail** successfully delivers a letter to a Mail Service, a copy of the letter is placed in the In Box (assuming you selected this option in the Preferences Dialog).

Once mail has arrived into the In Box, the title of the window will contain a number in parenthesis, which is the number of letters currently contained there. For example, if there are two letters in the In Box, the title will be: **In Box (2)**. You can use this feature to see at a glance whether **RFD Mail** has fetched any new mail.

Letters in the In Box can be browsed and handled in the same manner as letters which are in any other folder (see the topic: Managing Mail in Folders for more information). The one exception to this is how the In Box responds to double-clicking a letter. If you double-click a letter in the In Box, that letter is either placed on The Desktop, or is placed in the folder chosen in the Preferences Dialog.

### See also:

[How to Use the In Box](#)  
[Fetching Mail](#)  
[The Out Box](#)



## How to Use the In Box:

The In Box is meant to be a temporary holding place for newly sent and received letters. If your email needs are extremely simple, then you can probably use the In Box to store all of the mail you have received. In the normal case, however, this is not recommended.

When you receive a letter into the In Box, you are free to read the entire letter while it is still contained in the In Box (you can do this even while **RFD Mail** is still fetching mail). At this point you have several options:

- Delete the letter if you no longer want it.
- Move the letter to a folder.
- Move the letter onto The Desktop.

You may also choose to just leave the letter in the In Box. The disadvantage of this, however, is that it becomes less obvious when a new mail has arrived. If you regularly keep the In Box empty, then the fact that the In Box title has a letter count becomes your cue that you should read the mail that has been received.

### See also:

[The In Box](#)  
[Managing Mail in Folders](#)

## The Out Box:

The Out Box is a special folder which contains newly written letters you wish to deliver in a single call to a Mail Service. Only letters in New Letter Windows are eligible to be placed into the Out Box, and may only be removed to The Desktop.

Once you have placed letters into the Out Box, the title of the window will contain a number in parenthesis, which is the number of letters currently contained there. For example, if there are two letters in the Out Box, the title will be: **Out Box (2)**. You can use this feature to see at a glance whether you have mail waiting to be delivered.

When you decide to deliver the letters in the Out Box, you may either select the Mail|Deliver Outbox menu option, or press the **Deliver Outbox** button. This will cause **RFD Mail** to dial the appropriate Mail Services to deliver your mail.

Alternatively, you can deliver a single letter that is in the Out Box. This is done by selecting the letter in the Out Box that you wish to deliver. You may then either select the Mail|Deliver Letter menu option, or press the **Deliver Letter** button. This will cause **RFD Mail** to dial the appropriate Mail Service to deliver the selected letter.

### See also:

Managing Mail in the Out Box  
Delivering Mail  
The In Box

## Managing Mail in the Out Box:

Managing mail in the Out Box is simply a matter of adding letters from [The Desktop](#), moving letters back to the desktop, and deleting letters in the Out Box. Each operation is described below:

### Adding a Letter to the Out Box:

Only letters in a [New Letter Window](#) may be moved to the Out Box. The first step is to select the letter you wish to move. At this point there are three ways to get it into the Out Box:

- Select the [Letter|To Outbox](#) menu option.
- Press the **To Outbox** button.
- Minimize the New Letter Window, then drag the window's icon to the Out Box.

### Moving a Letter back to the desktop:

If you wish to edit a letter after you've placed it in the Out Box, you'll need to do this operation first. This operation works exactly as in any other folder. For detailed information, see the topic: [Managing Mail in Folders](#).

### Deleting a Letter in the Out Box:

This operation works exactly as in any other folder. For detailed information, see the topic: [Managing Mail in Folders](#).

### See also:

[The Out Box](#)

## Fetching Mail:

There are three ways to instruct **RFD Mail** to fetch mail:

### Fetch from a Single Service:

To check for and fetch mail from a single Mail Service, select the Mail|Fetch menu option. This will cause a dialog box to appear, containing a list of Mail Services. Select the service you want to check and press the **OK** button. This will cause a Modem Window to appear, and a call is placed to the selected service.

### Fetch from the Default Service:

To check for and fetch mail from your chosen default Mail Service, you must have first specified which Mail Service you want to be the default using the Modem Preferences Dialog. Once this is done, you may either select the Mail|Fetch from Default menu option, or press the **Fetch** button. This will cause a Modem Window to appear, and a call is placed to the default service.

### Fetch from All Services:

To check for and fetch mail from all Mail Services in the Post Office, either select the Mail|Fetch from All menu option, or press the **Fetch All** button. This will cause RFD Mail to place a call to each Mail Service in the Post Office, one after the other.

Because **RFD Mail** relies on Mail Services to actually perform the delivery of email, and because these services are only accessible using a modem, incoming mail cannot just automatically appear in the In Box. The only time new mail will appear there is when you perform one of the above operations. So while checking mail is still a manual operation, **RFD Mail** can check for and download mail much faster than if you were to do it yourself using a simple terminal program.

### See also:

[How RFD Mail Fetches Mail](#)  
[Mail Poll Dialog](#)

## How RFD Mail Fetches Mail

In order to successfully fetch mail, RFD Mail must accomplish two tasks:

- Place a call to the Mail Service with the correct modem parameters.
- Log into the Mail Service and instruct it to download any waiting mail to your computer.

To accomplish the first task, **RFD Mail** uses the [Phone](#), [Baud](#), [Parity](#), [Length](#), [Stop](#), and [Port](#) information in the Post Office Entry for the Mail Service. This informs **RFD Mail** which phone number to dial, which modem port to use, and what settings to use on that port.

To accomplish the second task, **RFD Mail** uses the [Username](#), [Password](#), [Mail-Address](#), and [Script File](#) information in the Post Office Entry for the Mail Service. The first three items inform **RFD Mail** how to log into your account, and the last item is the key to interacting with the service to fetch your mail. The Script File is a text file which contains all the instructions on how to instruct the Mail Service to check for and download mail to your computer. Following the Script File's instructions, **RFD Mail** will log into your account, move into the Electronic Mail area of the service (if necessary), and ask the service if there is any waiting mail. If there is, then **RFD Mail** will request to download each letter one by one, then log off when there are no more letters waiting.

As you can see, it is critical that the Post Office entry for each Mail Service you subscribe to must contain the correct information. To find out more about setting up Post Office entries, see the topic: Mail Service Dialog.

## Delivering Mail

There are two ways which you can deliver mail:

### **Deliver many letters:**

To deliver many letters at a time, the letters you wish to deliver must first be placed in the Out Box. Once this is done, you may either select the Mail|Deliver Outbox menu option, or press the **Deliver Outbox** button. This will cause **RFD Mail** to dial the appropriate Mail Services to deliver your mail.

### **Deliver a single letter:**

To deliver a single letter, you must first either select its New Letter Window, or select the desired letter in the Out Box. Once this is done, you may then either select the Mail|Deliver Letter menu option, or press the **Deliver Letter** button. This will cause **RFD Mail** to dial the appropriate Mail Service to deliver the selected letter.

Because **RFD Mail** relies on Mail Services to actually perform the delivery of email, and because these services are only accessible using a modem, any pending outgoing mail (either in the Out Box or on The Desktop) remains undelivered until you perform one of the above operations. So even though delivering mail is still a manual operation, **RFD Mail** can upload and deliver mail much faster than if you were to do it yourself using a simple terminal program.

### **See also:**

[How RFD Mail Delivers Mail](#)  
[Managing Mail in the Out Box](#)  
[Writing Mail](#)

## How RFD Mail Delivers Mail

In order to successfully deliver mail, RFD Mail must accomplish two tasks:

- Place a call to the [Mail Service](#) with the correct modem parameters.
- Log into the [Mail Service](#) and instruct it to upload and deliver any pending mail from your computer.

To accomplish the first task, **RFD Mail** uses the [Phone](#), [Baud](#), [Parity](#), [Length](#), [Stop](#), and [Port](#) information in the [Post Office](#) Entry for the Mail Service. This informs **RFD Mail** which phone number to dial, which modem port to use, and what settings to use on that port.

To accomplish the second task, **RFD Mail** uses the [Username](#), [Password](#), [Mail-Address](#), and [Script File](#) information in the [Post Office](#) Entry for the Mail Service. The first three items inform **RFD Mail** how to log into your account, and the last item is the key to interacting with the service to fetch your mail. The [Script File](#) is a text file which contains all the instructions on how to instruct the Mail Service to upload and deliver mail from your computer. Following the Script File's instructions, **RFD Mail** will log into your account, and move into the Electronic Mail area of the service (if necessary). If you have so specified in the [Modem Preferences Dialog](#), **RFD Mail** will first check for and download any new mail waiting for you. Then for each pending letter, **RFD Mail** will request to upload the letter, address and deliver the letter. When all mail has been delivered, **RFD Mail** will log off the service and hang up the phone.

As you can see, it is critical that the Post Office entry for each Mail Service you subscribe to must contain the correct information. To find out more about setting up Post Office entries, see the topic: [Mail Service Dialog](#).

### See also:

[How RFD Mail Fetches Mail](#)

## Reading Mail

Once **RFD Mail** has fetched some mail from a Mail Service, it will remain in the In Box for your perusal. You can verify quickly if there is any mail in the In Box by checking to see if there is a number following In Box Window's title (i.e., if there are two letters waiting, the title will be: **In Box (2)**). You have several options for reading mail once it is in the In Box:

- Read the letter while it is in the In Box.
- Put the letter on The Desktop in its own Letter Window.
- File the letter into a Folder.
- Leave the letter in the In Box

**For more information on the above options, see the topics:**

The In Box

Folders

Managing Mail in Folders

How to Use the In Box

Printing a Letter



## **Printing a Letter**

To print a letter, merely select the letter you wish to print, either in a Letter Window or a Folder, then select the **File|Print** menu option.

### **See also:**

File Menu

## RFD Mail Overview

**RFD Mail** is a Microsoft Windows (tm) application which acts as an easy-to-use, graphical front-end to many ASCII-based email services. Important features include:

- Easy, graphical editing and browsing of letters.
- Transparent handling of multiple mail services.
- File letters into folders for future reference.
- An Address Book for easy access to often-used addresses.
- Send Carbon-Copies of letters within a single mail service.
- Send letters individually or in batches via the Out Box.
- Automatically append signatures to outgoing letters.
- Automatically polling for new mail.
- Backup and Restore sets of folders.

Currently the CompuServe, GEnie, MCI Mail, World Unix, and The Direct Connection mail services are directly supported by **RFD Mail**. It is important to note that **RFD Mail** alone does not handle the delivery of electronic mail; it relies on the above services to accomplish this. To use this program you must have an account on one or more of these services. If you do not have an account, you may contact the services at the following numbers:

1-800-848-8199 --- CompuServe  
1-800-444-6245 --- MCI Mail  
1-800-638-9636 --- GEnie  
(081) 317 0100 --- The Direct Connection  
1-617-739-9753 --- World Unix (modem connection, use 8N1 and login as "new")

In addition, if you belong to an unsupported mail service (i.e., a local BBS) and do not wish to join another, **RFD Mail** can be customized to support your mail service. This is done by writing a new Script File and adding a new Mail Service to the Post Office. It is helpful to have some experience with other communication script languages (Crosstalk(tm), Procomm(tm), etc.) if you attempt to write a custom script.

### IMPORTANT:

This program is **shareware**. It is **not** free software. If you obtained this copy either from a BBS or a friend, then you are using an UNREGISTERED copy. You may run the program for an evaluation period of one month. After this time if you wish to continue using the program you must register by filling out the Program Registration form and sending in the Registration Fee. This will help guarantee that the program is well supported and enhanced in the future. The shareware copy of **RFD Mail** has the following limitations:

- Address Book can only have 10 entries
- Desktop limited to four folders of twenty letters each.
- Backup/Restore feature disabled.
- Registration reminders occasionally appear when dialing out.

Registering the program entitles you to the following:

- Personal Unlock Code to disable shareware limitations.
- License for all 1.x versions of **RFD Mail**.
- One free update disk mailed to you upon request
- Technical support via email.

**See also:**

Why use RFD Mail?  
Minimum Requirements  
Program Registration  
License and Warranty

## Why use RFD Mail?

**RFD Mail** provides an easy-to-use, graphical front-end to the CompuServe, GEnie, MCI Mail, World Unix, and The Direct Connection email services. The benefits of using this program are as follows:

- Graphical interface for writing and browsing mail is much easier than using the ASCII-based service directly.
- Minimizes online charges, since **RFD Mail** can send and receive mail faster than can be accomplished manually, and you are free to create and browse letters while offline.
- Transparently handles multiple mail services if you belong to more than one. Fetch mail from all of your services with one button. Send mail destined for multiple services with one button. A single Address Book keeps track of all of your correspondents.
- Files mail offline into folders for easy organization.
- Customizable to use unsupported mail services by writing custom Script Files.

## **Minimum System Requirements**

To run **RFD Mail**, your system should meet the following minimum requirements:

- Windows 3.1 (version 3.0 is not sufficient)
- 2 meg of RAM (4 meg recommended)
- 1.5 meg free disk space
- 80286 processor or higher
- Hayes-Compatible modem
- Any display except CGA, although this program has not been tested on monochrome displays.

## Program Registration - RFD Mail 1.2

(to print this form, select the "File|Print Topic" menu option)

\$29.95            Single User License  
\$ \_\_\_\_\_       MA residents add state sales tax (\$1.50)  
\$ \_\_\_\_\_       Total

Make Check or Money Order payable to Performance Designs, or provide the following Credit Card Information:

VISA/MasterCard (circle one)

Card #            \_\_\_\_\_  
Expires            \_\_\_\_\_  
Signature         \_\_\_\_\_

Address/Phone:

Name             \_\_\_\_\_  
Company         \_\_\_\_\_  
Address          \_\_\_\_\_  
                      \_\_\_\_\_  
Phone            \_\_\_\_\_

For the purposes of giving you your unlock code, select the Mail Service from the Post Office that you will be using most often (preferably one of the supplied Mail Services such as CompuServe). Then fill in the following information exactly as it is found in that service's entry in the Post Office:

Name             \_\_\_\_\_  
Mail-Address    \_\_\_\_\_  
Username         \_\_\_\_\_  
Your Name        \_\_\_\_\_

I have read and agree to abide by the license agreement:

Signature        \_\_\_\_\_

Please include any comments or suggestions on the lines which follow.  
Use an additional page if necessary.

\_\_\_\_\_  
\_\_\_\_\_  
\_\_\_\_\_

For information about volume discounts, site licenses, and technical questions please contact Performance Designs.

Mail form to:    Performance Designs.  
                      P.O. Box 1005  
                      West Concord, MA 01742

## **License and Warranty**

### **License:**

RFD Mail is copyright (C) 1994 by Performance Designs.

### **Installation of RFD Mail on your computer system implies agreement with the terms and conditions below.**

RFD Mail is distributed as Shareware. It is not free, freeware, or in the public domain. Non-registered users are granted a limited license to use RFD Mail on an evaluation basis for thirty days, for the purpose of determining whether RFD Mail is suitable for their needs. Use of RFD Mail, except for this limited purpose, requires registration. Use of non-registered copies of RFD Mail by any person, business, corporation, governmental agency or other entity institution is strictly forbidden.

Registration permits a user the license to use RFD Mail only on a single computer; a registered user may use the program on a different computer, but may not use the program on more than one computer at the same time.

No user may modify RFD Mail in any way, including but not limited to decompiling, disassembling or otherwise reverse-engineering the program.

All users are granted a limited license to copy the SHAREWARE version of RFD Mail only for the trial use of others subject to the above limitations, and also the following:

- RFD Mail must be copied in unmodified form, complete with the file containing this license information.
- The provided RFD Mail documentation must be included with the copy. No fee, charge or other compensation may be accepted or requested by any licensee.

Operators of electronic bulletin board systems may post the SHAREWARE version of RFD Mail for downloading by their users only as long as the above conditions are met. Shareware catalog businesses are welcome to post RFD Mail in their catalog listings.

### **Warranty:**

Performance Designs makes no warranty of any kind, express or implied, including without limitation, any warranties of merchantability and/or fitness for a particular purpose. Performance Designs shall not be liable for any damages, whether direct, indirect, special or consequential arising from a failure of this program to operate in the manner desired by the user. Performance Designs shall not be liable for any damage to data or property which may be caused directly or indirectly by use of the program.

The information in this document is subject to change without notice and does not represent a commitment on the part of Performance Designs.

## Troubleshooting

During the course of running **RFD Mail**, you may run into some difficulties. One type of difficulty is apparent when **RFD Mail** displays a dialog box informing you that either an error has occurred or that it cannot carry out the requested operation. For help with this, see the topic: [Error Dialogs](#). Another type of difficulty is apparent when **RFD Mail** has trouble interacting with your modem and/or Mail Service. For help with this, see the topic: [Modem Problems](#).

### See also:

[Getting Technical Support](#)



## Error Dialogs

If you encounter one of the following Error Dialogs, feel free to contact [Technical Support](#), whether or not you are a registered user.

### Internal Program Error

#### Selection Failed

#### Invalid Port Name

#### Specified Baud rate is unsupported

#### Specified byte size is invalid

#### The default parameters are in error

#### Out of memory

#### Cannot open port

These errors indicate that an internal processing error has occurred. The only remedy is to contact Technical Support.

The remaining Error Dialogs will occur in normal usage of the program. Below is a list of these errors, their causes and remedies. To get further [Technical Support](#) on these issues you must be a registered user.

### No Folders Selected!

Appears when you are performing an operation that required you to select a folder (Backup, Restore, Letter-to-Folder, etc.), and you did not select one. To remedy: select the desired folder(s) for the operation.

### Selected File is not a Backup File

Appears when you select a file when using the [File|Restore](#) option, but the file was not a backup file created by RFD Mail. To remedy: choose another file, preferably an RFD Mail Backup File.

### This Mail Service is still in use!

Appears when you attempt to delete a [Mail Service](#) from the [Post Office](#) when there are still addresses and/or letters which reference that service. To remedy: delete the addresses and letters which reference the selected service.

### No more folders available

Appears when you attempt to create more than 99 [folders](#). To remedy: use fewer folders.

### Invalid or no Mail Service specified

Appears when you select the [Mail|Fetch from Default](#) menu option or press the **Fetch** button, and there was either no default service specified in the [Modem Preferences Dialog](#) or that service has been incorrectly configured in the [Mail Service Dialog](#). To remedy: specify a default service or correctly configure that service.

### Your date range contains no letters to backup

Appears when you attempt to backup a set of folders using a date range which includes no letters. To remedy: select a date range which will actually contain letters

### Cannot backup an empty desktop.

Appears when you select the [File|Backup](#) menu option and there are no [folders](#) on [The Desktop](#). To remedy: create folders to be backed up, otherwise this operation has nothing to do.

### Letter does not have a valid address

Appears when you attempt to either [deliver](#) a letter or place it into the [Out Box](#) when there

is either no Mail Service specified in the address or that service has been incorrectly configured in the Mail Service Dialog. To remedy: specify a service or correctly configure that service.

### **Either the Post Office is empty or none of the Mail Services are correctly configured**

Appears when you either select the Mail|Fetch or Mail|Fetch from All menu options, but none of the Mail Services in the Post Office have been correctly configured. To remedy: make sure that you have correctly filled out the Mail Service Dialog for each of the Mail Services to which you subscribe.

### **The CC List is empty. Do you really want to close this dialog?**

Appears when you initially open a CC Dialog with an empty CC List, then click **OK** with the CC List still empty. In most cases this means that you have entered the address in the Address Field, but have forgotten to actually add the address to the CC List. To remedy: add the address you specified, or click **Cancel** if you really want to leave the CC List empty.

### **The Port is in use by another application**

Appears when you request to either deliver or fetch mail, but another application is using the Comm Port specified for that Mail Service. To remedy: either shut down the other application or disconnect it from the Comm Port.

### **Modem already in use**

Appears when you request to either deliver or fetch mail, but you are already fetching or delivering mail. To remedy: wait until the current fetch or deliver has completed.

### **No Timers Left!**

Appears when you are fetching or delivering mail and the Microsoft Windows (tm) environment runs out of timers. To remedy: abort the current phone connection, and shut down other applications which may be making use of timers.

### **Can't Open Script File**

Appears when you request to either deliver or fetch mail, but the Script File specified by the Mail Service is missing or inaccessible. To remedy: use the Mail Service Dialog to specify the correct script file.

### **Unexpected loss of carrier, modem offline**

Appears when the modem connection is unexpectedly interrupted. This may be caused by an error with the Mail Service's hardware, Call Waiting(tm), or other phone line troubles. To remedy: if you have Call Waiting(tm), be sure to include the disable sequence in the phone number for each Mail Service you use.

## Modem Problems

There are three classes of modem difficulties: configuration, initialization, and script problems.

### Configuration:

If you get an Error Dialog immediately when you attempt to deliver or fetch mail, you most likely have not configured the Mail Service or modem settings properly in the Mail Service Dialog.

### Initialization:

If the Modem Window appears, but nothing happens for awhile, then you get a "Dialing Failed" message, check the file modem.log file immediately after the error (this file will be located in the same directory as the **RFD Mail** program executable):

- If it is blank, then you most likely have a communication problem between your computer and your modem. Refer to your computer's and your modem's documentation for solutions, and perhaps test the connection using a simple terminal program.
- If you get the word "ERROR" in the file, then you most likely have a Modem Initialization String specified in the Modem Preferences Dialog that your brand of modem does not understand. See your modem documentation for a proper initialization string, or just specify a blank string in the Modem Preferences Dialog.

### Script Problems:

If the Modem Window appears and says "Connected", but then later it says "Aborting", then there may be a problem with the script file for that Mail Service. Again, check the modem.log file. You might see an error message from your service which may give you a clue as to what is going wrong. Also check the help pages for the specific service(s) you are using (CompuServe, GEne, MCI Mail, World Unix, and The Direct Connection) for more information on the types of problems you may see with that service. If you are unable to determine the problem, you may contact Technical Support whether or not you are registered, as it is our aim to ensure that the supplied Script Files are as robust as possible.

If you find that when you attempt to send a letter, the phone call appears to go smoothly but the letter ends up back in the Out Box, you probably have incorrectly addressed the letter. When the Modem Window is visible, watch for messages such as: "Bad Address" or "Letter NOT Sent". Also check the modem.log for similar types of error messages from your Mail Service. If this is the case, you need to correct the address of the letter.

## Getting Technical Support

If you are a registered user, Technical Support for RFD Mail is available via email. Telephone support will be extended only to users who's problems cannot be resolved over email. To contact Performance Designs Technical Support, use one of the following email addresses:

PERFORM.DES (GEnie)  
73017,1375 (CompuServe)  
572-1706 (MCI Mail)  
rfdmail@world.std.com (Internet)

Please give as complete a description of the problem as possible, and try to reproduce the problem using as few steps as possible. If it is a problem with Scripts, include the contents of the [modem.log](#) file that was produced directly after the failed connection.

## **How do I?...**

### **Write a Letter**

See the topic: [Writing Mail](#)

### **Send a letter to someone else**

See the topic: [Delivering Mail](#)

### **Read my Mail**

See the topics: [Fetching Mail](#) and [Reading Mail](#)

### **Check my Mail:**

See the topic: [Fetching Mail](#)

### **Reply to a letter I've received:**

See the topic: [Creating a Letter](#)

### **Register RFD Mail:**

See the topic: [Program Registration](#)

## Getting Started

Once you have followed the installation instructions in the [readme.wri](#) and [install.wri](#) files, there are several things you need to do to get **RFD Mail** up and running. The program comes with a [Post Office](#) which has an initial entry for each of the supported [Mail Services](#): [CompuServe](#), [GEnie](#), [MCI Mail](#), [World Unix](#) and [The Direct Connection](#). It also comes with an [Address Book](#) which contains [Technical Support](#) email addresses.

The first thing you should do is to go to the [Post Office](#) Window and edit the entries for the services to which you subscribe. See the topic: [Mail Service Dialog](#) for more information on what you will need to specify.

Once this is done, you need to go to the [Address Book](#) Window and delete the addresses which refer to the [Mail Services](#) you will not be using. Then you need to go back to the [Post Office](#) Window and actually delete the entries for the services you will not be using.

You should then review the [Preferences Dialog](#) and [Modem Preferences Dialog](#) to make sure that the settings are to your liking.

You may also want to add entries to the [Address Book](#) for people you frequently correspond with. This is optional and can be done at any time.

Please be sure to read the topic pages for each of the [Mail Services](#) you will be using ([CompuServe](#), [GEnie](#), [MCI Mail](#), [World Unix](#), [The Direct Connection](#)) to get more information about how **RFD Mail** interacts with each service. At this point, **RFD Mail** is ready to use, and you can begin immediately sending and receiving mail.

### See also:

[Writing Mail](#)  
[Fetching Mail](#)  
[Reading Mail](#)  
[The In Box](#)  
[The Out Box](#)  
[The Desktop](#)

## CompuServe

The CompuServe Information Service(tm) is a popular information service which provides a wide array of services, one of which is electronic mail. If you are not currently a subscriber, you can contact CompuServe directly at 1-800-848-8199 to activate an account. Alternatively, many software retailers carry CompuServe Membership Kits, which includes a \$25 usage credit towards your new account.

The Script File which **RFD Mail** uses to interact with CompuServe is the file [cserve.scr](#). This script downloads and uploads mail using the XMODEM file transfer protocol, which is not a particularly efficient error-correcting protocol. If you are using an error-correcting modem (MNP, v.42, etc.), then there is an alternate script file called [cserve\\_a.scr](#) which will improve the performance of mail transfers. This script uses a simple ASCII file transfer protocol, which is very efficient but is not error-checked. Therefore, it is recommended **only** if your modem provides an error-free connection.

**Warning:** users of high-speed modems (9600 and above) should consider either using the normal script, or dialing CompuServe at 2400 baud. This is due to the fact that at 9600 baud, CompuServe may have trouble downloading the letter at full speed, especially if there is a heavy load on the system. This can cause pauses in the transfer which will cause RFD Mail to incorrectly assume that CompuServe has finished downloading the letter, thereby truncating it. This has not been a problem at 2400 baud, and is only a problem at 9600 baud when CompuServe is heavily loaded.

To use the [cserve\\_a.scr](#) script, edit the Post Office entry for CompuServe, and set the Script File field to be [cserve\\_a.scr](#). In addition, set the Flow field to be [Xon/Xoff](#).

An assumption by both of the script files is that you have not set "Short Prompts" in your User Profile. If you have changed this setting, you will need to go online ("go profile") and change the setting back to the standard prompts. Failing to set the standard prompts will prevent you from being able to send or receive mail using this program,

Another assumption is that your prompting level **within** CompuServe Mail is set to "menu". If you have changed this setting, you will need to go into the mail area ("go email", then "options") and change the setting back to "menu". Failing to set the menu prompts will prevent you from being able to send or receive mail using this program,

### **Alternate Access:**

The scripts are initially set up to dial directly to CompuServe Packet Network, which is essentially a direct connection to CompuServe. If you access CompuServe through either TymNet or SprintNet, the script can be easily modified to log in through those networks. See the [cserve.scr](#) and [cserve\\_a.scr](#) files for details on how to do this.

## GEnie

GEnie(tm), the General Electric Network for Information Exchange, is a very popular information service which provides a wide array of services, one of which is electronic mail. If you are not currently a subscriber, you can contact GEnie Client Services directly at 1-800-638-9636 to activate an account.

The Script File which **RFD Mail** uses to interact with GEnie is the file [genie.scr](#). This script downloads and uploads mail using a simple ASCII file transfer protocol, which is very efficient but is not error-checked. It is therefore highly recommended that you use an error-correcting modem (MNP, v.42, etc.) to exchange mail using GEnie.

Another assumption by the script file is that your "break" character is set to ASCII 3, or Control-C. This is the default setting for all new GEnie accounts. If you have changed this setting in your GEnie User Profile, then you either need to change it back, or change all occurrences of the string "Control C" to "Control x" in [genie.scr](#). where "x" is the value of your break character. Failing to do this results in the script aborting when attempting to upload a letter.

### **IMPORTANT:**

Avoid sending letters which have lines which begin with an asterisk ( \* ). These are assumed to be commands by GEnie, and at best will cause that line to be skipped, at worst will cause the entire letter not to be delivered. This is an idiosyncrasy of GEnie and is beyond the control of **RFD Mail**.



## MCI Mail

MCI Mail (tm) is a very popular electronic mail service, which also provides other services such as FAX delivery, news, and bulletin boards. If you are not currently a subscriber, you can contact MCI directly at 1-800-444-6245 to activate an account.

The Script File which **RFD Mail** uses to interact with MCI Mail is the file [mcimail.scr](#). This script downloads and uploads mail using the ZMODEM file transfer protocol, which is very efficient error-correcting protocol. Because it is so efficient, it is recommended that the Flow setting in the Post Office entry for MCI Mail be set to **Xon/Xoff** to prevent overrunning either MCI or your local computer. If you encounter difficulties transferring mail, the script may be easily configured to use the Kermit transfer protocol instead. See the [mcimail.scr](#) file for more details.

As of this release, **RFD Mail** only supports the delivery of mail to MCI Mail addresses (i.e., to people who have MCI Mail accounts). MCI Mail does support delivery to outside mail systems (such as CompuServe and the Internet), but the way in which this is implemented prevents RFD Mail from supporting this feature. If user demand is high enough, this feature may be added in future releases of **RFD Mail**.

## Program Registration

The Program Registration process is automated, and can be done from within **RFD Mail**. Alternatively, you may print out the [Registration Form](#) contained within the online help. It is highly recommended that you use the automated registration.

To begin the registration, select the [Help|Register RFD Mail](#) menu option. This will bring up an [Unlock Dialog](#), where you can enter the [Unlock Code](#) to disable the shareware limitations. At this point, since you do not have an [Unlock Code](#), you should press the **Form...** button. This will bring up a [Registration Dialog](#), where you enter your personal information (Postal Address, etc.) and payment information (Check, [Credit Card](#), [CompuServe](#)). Once you have correctly entered data into this dialog and pressed the **OK** button, two copies of the order form will be created:

### The Printable Form:

A file called [orderfrm.txt](#) is created, which is filled in with your address and other information necessary to create your [Unlock Code](#). If possible, **RFD Mail** will immediately run Windows Notepad(tm) and load that file into the text window. If you are paying by check, you should print out the form, complete any missing information, and mail the form with your payment to Performance Designs. Upon receipt of the Registration Form, we will send your [Unlock Code](#) via U.S. Mail, and will also send it via email if your email address is accessible from one of the supported Mail Services.

### The Electronic Form:

In addition to the [orderfrm.txt](#) file, a [New Letter Window](#) is created which is addressed to [RFD Mail Technical Support](#), and contains the Registration Form in the body of the letter. You should deliver this letter via one of the supported mail services. If you are paying by [credit card](#) or CompuServe, you need not mail the printed copy of this form; the electronic version is sufficient. Even if you are paying by check, having this electronic copy in addition to the printed copy enables us to reduce the chance of an error occurring in your [Unlock Code](#).

Once you have received your [Unlock Code](#), select the [Help|Register RFD Mail](#) menu option, and enter the [Unlock Code](#) into the [Unlock Dialog](#). Once you have entered the correct information, all shareware limitations will be removed, and your copy of **RFD Mail** is now officially registered. Please note that the **entire** program is now unlocked, not just for the [Mail Service](#) which you specified in the [Unlock Dialog](#).

### Updates:

Registering the program grants you a license to all 1.x versions of **RFD Mail**. Your [Unlock Code](#) is guaranteed to work for all versions before 2.0. If you desire, you may make one request for a disk containing the latest version of **RFD Mail** to be mailed to you. After you have requested an update, future 1.x updates can be requested for a nominal handling fee, or can be obtained on your own via standard shareware distribution channels. Send email to the [Technical Support](#) address for more information.

### Registration Fee:

The cost to register RFD Mail is \$29.95, with an additional \$1.50 sales tax for Massachusetts residents. Performance Designs accepts VISA, MasterCard, check, money-order, and electronic payment on [CompuServe](#). If you wish to pay by credit card, please see the [Credit Card Payment](#) topic for important information. If you wish to pay on CompuServe, you may do so by typing **go swreg** at any "!" prompt, and looking up **RFD Mail** under the keyword "RFD".

**See also:**

[Unlock Code](#)

[Unlock Dialog](#)

[Registration Dialog](#)

[Credit Card Payment](#)

## Unlock Code

Your Unlock Code is a special code derived from four fields of a Mail Service: the [Name](#), [Mail-Address](#), [Username](#), and [Real Name](#). See the Mail Service Dialog for more information about these fields and how they are used.

When you use the automated registration, an order form is created which specifies the information in those fields, allowing us to determine the Unlock Code to send to you. It is therefore critical that you follow these guidelines:

- If you don't use the automated registration, be **sure** to print neatly on the registration form, and double-check the accuracy of your information. Also check to make sure that none of those fields have any leading or trailing spaces in them.
- Once you have your Unlock Code, be sure to specify the same Mail Service in the Unlock Dialog as on the registration form.
- It is highly unlikely that you should ever need to change the fields in the Mail Service from which your Unlock Code was derived. If this is absolutely unavoidable, you may request a new Unlock Code. Please be reasonable about this.

### See also:

[Program Registration](#)

## Unlock Dialog

This dialog is accessible via the [Help|Register RFD Mail](#) menu option. There are two fields, which when correctly filled in, will remove the shareware limitations of **RFD Mail**:

### Unlock Service:

This should be set to same service that was specified either on the [Program Registration Form](#) or in the [Registration Dialog](#).

### Unlock Code:

This should be set to the [Unlock Code](#) that was mailed to you after you submitted a registration and paid the registration fee.

Once those two fields have been correctly entered, pressing the **OK** button will remove the shareware limitations. If you get an error instead, check the following:

- Did you use the automated registration procedure? If so have you changed anything in the Post Office since then?
- Did you copy down the Mail Service information correctly and neatly on the [Registration Form](#)?
- Are you sure the [Unlock Code](#) you typed in matches exactly what was sent to you? (watch out for confusion between the letter "l" and the number "1")
- If all of the above is true, then it is possible that the [Unlock Code](#) is incorrect. Send email to [Technical Support](#) to allow us to resolve the issue.

If you do not yet have an [Unlock Code](#), press the **Form...** button to bring up the [Registration Dialog](#), and fill in the requested information.

### Helpful Hint:

You should receive your [Unlock Code](#) via US Mail and electronic mail. When you receive the electronic copy of the code, be sure that the letter is selected before bringing up this dialog. **RFD Mail** will attempt to find the Unlock Service and Unlock Code in the letter and automatically fill in the correct information for you.

### See also:

[Program Registration](#)

## Registration Dialog

This dialog is accessible from the **Form...** button on the Unlock Dialog. This dialog contains fields which will be used to generate an order form to register your copy of **RFD Mail**, which are as follows:

### **Name, Company, Address, City, State, Zip, Phone**

Enter your Postal Address and Phone Number in these fields, so that we know where to deliver your Unlock Code and any updates to the program.

### **Mail Svc:**

Select the Mail Service you subscribe to, or if you subscribe to more than one, select the one you use most often. Not only will this service be the basis for your Unlock Code, but it also provides us with an email address with which to provide you with Technical Support and information about bug fixes and updates.

### **VISA, MasterCard**

If you wish to pay by credit card, select the appropriate card type, and fill in your card number and expiration date. For important information on paying by credit card, please read the Credit Card Payment topic.

### **Check**

If you wish to pay by check or money order, select this button. Be sure to print out and mail the registration form along with your payment to Performance Designs.

### **CompuServe**

If you wish to pay online with CompuServe, select this button. After emailing the registration letter, be sure to go to the SWREG area of CompuServe to initiate payment of the registration fee.

### **Card #, Exp**

If paying by credit card, enter your card number and expiration date in these fields.

Once you have filled in the dialog and pressed the **OK** button, you will be presented with the completed Registration Form, and a new letter containing this form will appear on the Desktop.

### **See also:**

Program Registration  
Credit Card Payment

## World Unix

World Unix, part of the Software Tool and Die system, is a public-access UNIX(tm) service which provides access to Internet mail, newsgroups, file transfer, and more. If you are not currently a subscriber, you can contact Software Tool and Die directly at 1-617-739-9753 using your modem (set to 8N1) to activate an account.

The Script File which **RFD Mail** uses to interact with World Unix is the file unix.scr This script downloads and uploads mail using the ZMODEM file transfer protocol, which is very efficient error-correcting protocol. Because it is so efficient, it is recommended that the Flow setting in the Post Office entry for World Unix be set to **Xon/Xoff** to prevent overrunning either World Unix or your local computer.

Because your account with World Unix is highly tailorable, the script file may not work "out of the box" if you have modified your login procedures. If you encounter difficulties with the script, contact either [staff@world.std.com](mailto:staff@world.std.com) or [rfdmail@world.std.com](mailto:rfdmail@world.std.com) to get further assistance.

### **Alternate Access:**

World Unix is accessible via the CIS Packet Network. If you are not local to the Boston area you may find this to be an economical way of accessing your account. To do so, merely change the phone number in the Post Office entry to be a local CompuServe access number, change the script file from unix.scr to unix\_cis.scr, and change the Flow setting to **None**. This alternate script file uses ZMODEM to download mail, but Kermit is used to upload mail due to limitations of the CIS Network. Kermit is extremely inefficient, especially over a packet network, but unfortunately this is the only protocol that works at all in the upload direction.

### **Other Options:**

The unix.scr file is highly configurable through liberal use of script aliases. For example, if you use a shell other than /bin/csh (tcsh for example), you can easily adjust the script to accommodate your shell's prompt by changing the "prompt" alias. You can also easily select a transfer protocol other than ZMODEM if you are having upload or download difficulties. These and other options are documented within the unix.scr file itself.

## The Direct Connection

The Direct Connection is a UK based online service offering access to the full range of popular Internet services.

We can offer everything from a simple mail-only account (perfect for use with **RFD Mail**) through to TCP/IP, UUCP or dial-up connections to our friendly-interface host machines.

For further details contact:

Voice Line: (081) 317 0100

Email: [helpdesk@dircon.co.uk](mailto:helpdesk@dircon.co.uk)

Demo Line (Modem): (081) 317 2222, parameters 8-N-1 and speed

Internet Demo: [dircon.co.uk](http://dircon.co.uk)

The Script File which **RFD Mail** uses to interact with The Direct Connection is the file `tdc.scr`. This script downloads and uploads mail using the ZMODEM file transfer protocol, which is very efficient error-correcting protocol. Because it is so efficient, it is recommended that the Flow setting in the Post Office entry for The Direct Connection be set to **Xon/Xoff** to prevent overrunning either The Direct Connection or your local computer.

Because your account with The Direct Connection is highly tailorable, the script file may not work "out of the box" if you have modified your login procedures. If you encounter difficulties with the script, contact either [helpdesk@dircon.co.uk](mailto:helpdesk@dircon.co.uk) or [rfdmail@world.std.com](mailto:rfdmail@world.std.com) to get further assistance.



## Importing/Exporting the Address Book

You have the option of importing and exporting the contents of the Address Book to and from tab-delimited text files. Each line of the text file is an address, with each field of the address separated by a tab character, as shown below:

```
name [tab] address [tab] mail service
```

When importing from a text file, any errors or warnings are displayed in a list after the import is complete. The following warnings or errors may occur:

- A line in the text file had an unrecognizable format.
- An address in the file was already contained in the Address Book.
- An address in the file referred to an unknown Mail Service.

### See also:

[File Menu](#)

## Importing/Exporting a Letter

### Import:

To import a letter from a text file, select the [File|Import|Letter](#) menu option. When importing a letter, a [New Letter Window](#) is created on [The Desktop](#). The address and subject line will be blank, and the body of the letter will contain the contents of the text file. If the text file exceeds 60000 characters in length, a warning message will be displayed and only the first 60000 characters will be placed in the body of the letter.

### Export:

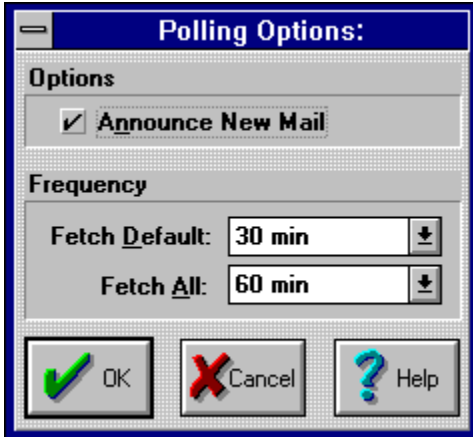
To export a letter to a text file, select the letter you wish to export, then select the [File|Export|Letter](#) menu option. This will result in the letter being written to the selected file, with a header containing the date, source or destination, and the body of the letter. If you wish to append the letter to an existing text file, merely select the [Append](#) check box before pressing the **OK** button.

### See also:

[File Menu](#)

## Mail Poll Dialog

This dialog is available from the [Mail|Poll...](#) menu option, and allows you to set two time intervals which **RFD Mail** will use to automatically fetch your mail. The dialog appears below:



*(click the mouse over the part of the dialog you need help on)*

Note that the [Fetch All](#) polling command takes precedence over the [Fetch Default](#) command if the two time intervals cause an overlap in polling. For example, if **RFD Mail** is set to do a Fetch Default every 30 minutes and a Fetch All every 60 minutes, then the following scenario will occur (assuming RFD Mail is started at 12:30):

- 1:00 - Fetch Default
- 1:30 - Fetch All (overrides the Fetch Default scheduled for 1:30)
- 2:00 - Fetch Default
- 2:30 - Fetch All (overrides the Fetch Default scheduled for 2:30)
- (and so on)

### See also:

[Fetching Mail](#)  
[Mail Menu](#)

### Announce New Mail:

Checking this box causes **RFD Mail** to display a dialog box containing the number of letters fetched (if any) after polling for mail. The dialog box will be displayed for 10 seconds then will automatically close.

**Fetch Default:**

This field determines the interval at which you wish **RFD Mail** to check for new mail by dialing your default Mail Service (as defined in the Modem Preferences Dialog).

**Fetch All:**

This field determines the interval at which you wish **RFD Mail** to check for new mail by dialing all of your configured Mail Services.

## Command-Line Options

**RFD Mail** supports several options on the command line. These options, combined with an automatic scheduling program, enable timed delivery or fetching of email:

### **-deliverOutBox**

This option causes RFD Mail to immediately perform a "Deliver Outbox" command.

### **-fetchAll**

This option causes RFD Mail to immediately perform a "Fetch All" command. When the session is complete, a dialog box containing the number of letters received (if any) is displayed.

### **-fetchDefault**

This option causes RFD Mail to immediately perform a "Fetch Default" command. When the session is complete, a dialog box containing the number of letters received (if any) is displayed.

### **-exit**

When combined with one of the above options, this option causes RFD Mail to immediately exit after performing the requested command.

### **-profile filename**

This option causes **RFD Mail** to use the specified initialization file, rather than the default **rfdmail.ini** file from the Windows directory. This option is useful if you wish to install more than one copy of **RFD Mail** on the same machine.

Note that if the **-fetchDefault**, **-fetchAll**, and **-deliverOutBox** options are combined on the same command line, only one of the commands will be performed. The options are listed in priority-order above, with **-deliverOutBox** having the highest priority, and **-fetchDefault** having the lowest.

### **See also:**

[Mail Poll Dialog](#)

## Mailing Lists

As of this release, the **RFD Mail** Address Book does not directly support mailing lists. This is planned for a future release.

As a workaround, you can manually login to the Mail Service(s) to which you subscribe, and set up a mailing list there. For World Unix users, this entails adding an alias to the `.mailrc` file, see the `mail` man page for more details. For other systems, simply go into the mail area and follow that system's procedures for setting up a list. Once this is done, you merely address the letter to the name of the mailing list you created, and deliver the letter to that address.



## **Credit Card Payment**

Performance Designs accepts VISA and MasterCard for payment of the registration fee. To pay by credit card, simply specify the card number and expiration date in the [Registration Dialog](#). This will place your card information directly into the Registration Form, which can be emailed to [RFD Mail Technical Support](#). Upon receipt of the form and card information, your credit card will be charged for the \$29.95 registration fee (plus \$1.50 tax for Massachusetts residents), and your unlock code will be emailed back to you. In most cases the turnaround will be less than 24 hours.

Note that some users may have concerns about security, as in some cases your registration letter may pass through several public networks before arriving at Performance Designs. For this reason, the credit card information is encrypted before being placed in the Registration Form. So even if your registration letter is intercepted, your credit card number will be protected against fraudulent use.

## Signatures Dialog

This dialog allows you to create, edit, and delete signatures . The dialog is available from the File Menu:



*(click the mouse over the part of the dialog you need help on)*

### See also:

[New Letter Window](#)  
[Letter Options Dialog](#)  
[Signatures](#)

### Signature List:

This list displays the current signatures. Use the **Add** button to create a new signatures, and the **Delete** button to delete the selected signature.

**Signature Text:**

This text area allows you to view and edit the currently selected signature. Use the **Save** button to save any changes you make here.

**Add:**

This button allows you to create and name a new signature.

**Delete:**

This button allows you to delete the currently selected signature.

**Save:**

This button saves any changes to the currently selected signature.

## Signatures

A [signature](#) is a short section of text which is attached to the end of every letter you deliver. This text usually contains your name, and optionally your email address, phone number, etc. A typical signature appears below:

```
-----  
David Yon                               Performance Designs  
RFD Mail Tech Support                   PO Box 1005  
rfdmail@world.std.com                   Concord, MA 01742  
-----
```

Because the information you wish to provide may be different for each [Mail Service](#) (or even for each recipient), **RFD Mail** allows you to create multiple signatures. The creation and management of signatures is done using the [Signatures Dialog](#), available from the [File|Signatures...](#) menu option.

To attach a signature to a letter, bring up the [Letter Options Dialog](#) (available from the [Options](#) button on a [New Letter Window](#)) and specify which signature you wish to use. The signature text will be appended to the body of the letter **only** when it is delivered, so you will not immediately see the effects of choosing a signature. When a copy of the letter is filed in the In Box after delivery, only then will you see the actual text of the signature appear in the body of the letter.

In addition to specifying the signature for each letter, you can associate a signature with a [Mail Service](#). This is set in the [Mail Service Dialog](#), available from the [Post Office Window](#). Associating a signature with a Mail Service causes that signature to be used for every letter you deliver through that Mail Service, unless you explicitly choose another signature for that letter.

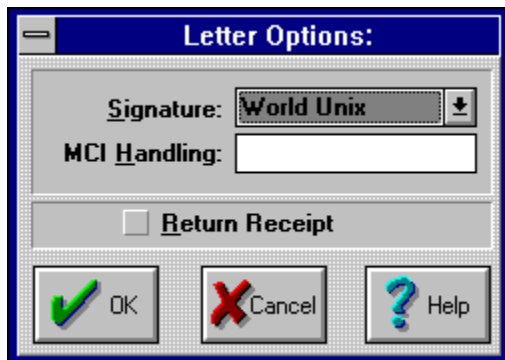
See also:

[Letter Options Dialog](#)  
[New Letter Window](#)  
[Signatures Dialog](#)



## Letter Options Dialog

This dialog allows you specify options for a new letter. The dialog is available by either pressing the **Options** button in a New Letter Window, or by selecting the Letter|Edit Options... menu option:



*(click the mouse over the part of the dialog you need help on)*

### See also:

[New Letter Window](#)  
[Signatures](#)

**Signature:**

This field allows you to choose which signature you wish to use for this letter, or to select **<none>** if you do not wish to add a signature for this letter.

**MCI Handling:**

This field allows you to specify a handling code on letters sent using MCI Mail. Note that this field does not have any affect on any of the other supported Mail Services.

**Return Receipt:**

This check-box allows you to specify that a return receipt be sent once the recipient(s) of this letter read your message. Note that this option is only supported on CompuServe and MCI Mail.

