

# Contents

## **PEEPER** (Shareware and Registered Version Help)

Introduction

Note: Updates for Registered Users

How to Use the Program

Advanced Functionality

Registration Information **(e.g. How to Order)**

System Requirements

What is Shareware

Getting Support and Help

Copyright Notice

# Introduction

**Peeper** includes the following functions.     

- Powerful file viewer capable of displaying over 20 different file formats. See [List](#).
- Powerful printing capabilities. Optionally use the document's controlling application or Peeper itself to print. See [Printing](#).
- Launch Programs
- Launch Documents by launching the program that controls the document with it pre-loaded.
- View Version information See [Example of Version Information](#).
- View File Dependencies See [Example of File Dependencies](#).

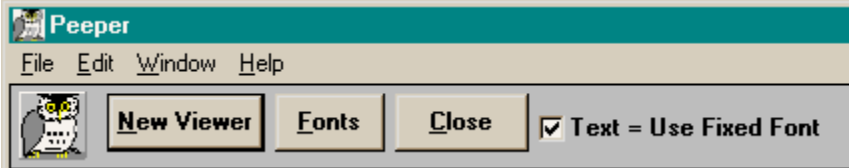
**Special Note:** **Peeper** has been included in ***Windows Magazine's SUPERIOR SHAREWARE*** list.

**Public Brand Software** has rated it with **4 stars** and the UK Magazine ***PC PLUS*** rated it a **10!**

## How to Use the Program

Use the mouse to select specific information about each screen element from the graphics below. Simply click once where you see the mouse pointer change to a pointing finger.

This is a representation of the program's main menu and toolbar.



Select Primary View Window to view a typical document viewer.

# Registration Information

See [Ordering Information](#)

## Features and benefits of Registered Version:

- Elimination of all references to registration and other "nag" screens.
- Additional updates, corrections and bug fixes implemented after the release of the shareware version.
- You will be alerted to new releases when available.

# Ordering Information

Registration for **PEEPER** is **\$22.95 plus shipping/Handling** You may either pay by check, money order, or via credit card.

Credit cards accepted: **Visa, MasterCard** or **American Express** [Read This.](#)

Via **PHONE Direct** from Fineware. **(800) 544-1740**

Via **FAX Direct** from Fineware. **(405) 942-7819**

Via **e-mail Direct** from Fineware.

## E-Mail Addresses

### **Al Meadows - Fineware Systems**

CompuServe.....70650,2022

Prodigy.....BBTK05A

America Online.....VB AL

Microsoft Network..FINEWARE

Internet .....70650.2022@CompuServe.Com

**Note: Join us on the World Wide Web: [WWW.fineware.com](http://WWW.fineware.com)**

Order Form Direct from Fineware using US Mail

**Available:** Visa, MasterCard, American Express, Check or Money Order

See Site License Ordering for multi-unit sales.

Ordering Online via **CompuServe SWReg Service**

**Available:** Conveniently billed to your CompuServe Account

PsL Ordering Information **Credit Card Orders ONLY**

**Available:** 800 Number, Fax, MasterCard, Visa, Amex, or Discover

See About PsL

Order form for **United Kingdom**

via **Oakley Data Systems**

**Available:** Fax, voice, email, credit cards

Order form for **The Netherlands, Belgium, & Germany**

via **CopyCats Software & Services**

**Available:** Fax, voice, email, credit cards

Information for **Japan**

via **P. & A. Shareware**

# Order Form

## PEEPER Ver 1.19

**Note:** Select "File-Print Topic" from the menu bar to **print** this form.

You can order **PEEPER** mail with payment by **check** , **money order** or **credit card**.

Name: \_\_\_\_\_  
Company: \_\_\_\_\_  
Street: \_\_\_\_\_

Street: \_\_\_\_\_  
City: \_\_\_\_\_  
State: \_\_\_\_\_ ZIP: \_\_\_\_\_  
Country: \_\_\_\_\_  
Telephone Number: \_\_\_\_\_

Credit Card Type: Visa MasterCard American Express  
(circle one)

Credit Card Number: \_\_\_\_\_

Expiration Date: \_\_\_\_\_

Signature: \_\_\_\_\_

(Unless otherwise requested we ship a 3.5" HD disk)

Peeper	\$22.95	_____
Oklahoma residents add 8.375% sales tax		_____
Shipping/Handling - US or Canada	\$2.00	_____
Shipping/Handling - Outside of US/Canada	\$4.00	_____

Total in US Funds drawn on a US Bank \_\_\_\_\_

**Make checks payable to: Fineware Systems**

**Mail to:**  
Fineware Systems  
P.O. Box 75776  
Oklahoma City, Ok. 73147

By the way, where did you initially hear about **PEEPER**?  
\_\_\_\_\_ (If CompuServe, which forum)

## Disk Drive Combo Box Control

Use this control to select the desired disk drive. This will show the current default directory location in the Directory Tree listbox for the selected disk drive when changed.

## Directory Tree Listbox

Directory listing on selected disk drive. Use the mouse to select a specific directory. This requires a Double\_Click of the left mouse button. You must select the directory (using the double\_click) before the files displayed in the Files ListBox will show the correct entries for that directory.

Double\_Clicking also expands the directory structure to show sub-directories if any exist.



## Files Listbox

Listing of all of the designated file types which are located within the currently selected directory. You may use the Mouse (single\_click) or the arrow keys to select a specific file. This triggers the program's file viewers and inspection routines.

**Note:** You may also use the mouse to launch the highlighted entry by double\_clicking it. In the case of documents and not executable files, the program associated with the file type will be launched with the program loaded.

## Program Icon

This will display the program's About screen when Double\_Clicked with the mouse.

## Close Button

Pressing this button with the mouse terminates the program.

## Definition of Shareware

Shareware distribution gives users a chance to try software before buying it. If you try a Shareware program and continue using it, you are expected to register. Individual programs differ on details -- some request registration while others require it, some specify a maximum trial period. With registration, you get anything from the simple right to continue using the software to an updated program with printed manual.

Copyright laws apply to both Shareware and commercial software, and the copyright holder retains all rights, with a few specific exceptions as stated below. Shareware authors are accomplished programmers, just like commercial authors, and the programs are of comparable quality. (In both cases, there are good programs and bad ones!) The main difference is in the method of distribution. The author specifically grants the right to copy and distribute the software, either to all and sundry or to a specific group. For example, some authors require written permission before a commercial disk vendor may copy their Shareware.

Shareware is a distribution method, not a type of software. You should find software that suits your needs and pocketbook, whether it's commercial or Shareware. The Shareware system makes fitting your needs easier, because you can try before you buy. And because the overhead is low, prices are low also. Shareware has the ultimate money-back guarantee -- if you don't use the product, you don't pay for it.

## System Requirements

PEEPER requires Windows 3.1 or later or Windows for Work groups 3.11 or later. I have tried to provide keyboard support for most functions but a mouse or other pointing device is highly recommended.

A PC (386 processor or above) with at least 4 MB of RAM.

# Product Support

Technical support is available at no charge by sending electronic mail to:

## **Al Meadows (Fineware Systems)**

**70650,2022 on CompuServe**  
**70650.2022@CompuServe.com on Internet**  
**fineware@ionet.net on Internet**  
**BBTK05A on Prodigy**  
**VB AL on America On line**

I prefer to handle support via e-mail but realize this is not possible for some users. Therefore, I also provide software support via fax at (405) 942-7819.

Technical support also available by sending US Mail to Fineware Systems , P.O. Box 75776, Oklahoma City, Ok 73147.

**Note: Construction of a World Wide Web site is underway. Contact us for current information and URL addressing.**

Registered users have priority but I will try to answer all questions.

## Copyright Notice

**Copyright © 1994-1995 Fineware Systems and Al Meadows . All rights reserved.**

## Site Licensing

**Site License pricing is applicable to orders of 10 or more copies only.** Quantities under 10 are priced at the standard rate (see [order form](#)).

For quantities of 10 or more, the price is \$150.00 + \$7 per additional license over 10.

Example: a 50 user site license would be  $\$150.00 + (\$7 \times 40) = \$430.00$ .

Special Network Server Based Licensing: A server license for an unlimited number of users can be purchased for \$500.00 per server.

**Note:** Only a single master diskette containing the program will be distributed on a site license unless requested otherwise. If you desire additional diskettes, please add \$1 per diskette desired.



## Ordering Online

You may order using CompuServe's Software Registration Service:  
enter **GO SWREG** at the ! prompt and follow the menus.

**PEEPER**'s registration id is **3925**. The indicated price will be \$22.95 plus \$2 shipping and handling (\$4 outside US, Canada, and Mexico).

### Other Fineware Systems Products:

**Space Hound Pro**'s registration id is **2594**. The indicated price will be \$37.95 which includes FREE shipping and handling.

**Note:** Ordering On line via CompuServe is an exceptionally easy way for those users who live outside the United States to pay for Shareware.

## Select File Types

This button allows you to limit the files being "peeped on" to specific file types.

## File Content Display

This area will contain the contents of the selected file. If the file type is one of the supported file types, the contents will be displayed in a readable format. If the format is unknown or the file is not normally viewed then the display will consist of a hex dump of the file's contents.

**Note:** Files containing embedded version information will have their view window split between the hex dump portion and the embedded data.

## Imported Modules

These are also referred to as file dependences. In order for the file currently being displayed to operate normally, all of its file dependencies must be found during run time.

## Directory List

Used to select the directory where the files you wish to view are located.

## Example of File Dependencies

Imported Name Table:

KERNEL  
GDI  
USER  
COMMDLG  
SHELL

The CLOCK applet which ships with Microsoft Windows depends upon the presence of 5 other modules called KERNEL, GDI, USER, COMMDLG, & SHELL. In general, these files will be Dynamic Link Libraries and can be identified by the .DLL file extension name. If a file needed by a program is missing, the program's error routines may not identify which module can't be found.

## Example of Version Information

Filename: clock.EXE  
OriginalFilename: CLOCK.EXE  
CompanyName: Microsoft Corporation  
FileDescription: Windows Clock application file  
FileVersion: 3.10.0.103 (3.10)  
InternalName: CLOCK  
LegalCopyright: Copyright © Microsoft Corp. 1991-1992  
ProductName: Microsoft® Windows(TM) Operating System  
ProductVersion: 3.10.0.103 (3.10)  
FileType: Application

The ability to extract the version information is valuable when attempting to resolve conflicts when you have multiple versions of the same file. File date stamps cannot always be trusted to indicate which version of a file is the latest.

## List of Viewers

ASCII, HEX, PCX, TIF, GIF, BMP, WMF, ICON, Microsoft Word, WordPerfect, AMI PRO, xBase, Paradox, Lotus, Excel, ZIP, LZH, Quattro Pro, MetaFiles, Q&A, Windows Write, and Microsoft Works.

Also included Program Information Files (.PIF) and Windows Group File (.GRP) and Windows modules (.EXE, .DLL, .VBX)

(New viewers are added from time to time and support for newer file formats updated as soon as possible.)



## Credit Card Requirements

**When ordering with a credit card, it is important that you include the following information.**

- Credit Card Number
- Expiration Date
- Name as it appears on the card
- Address that your statements are delivered to (**Note:** This will be a requirement for all credit card transactions in the future when the card itself cannot be imprinted. It is for your own protection.)
- Address that the product is to be delivered to if different than your billing address.

## Upgrading to Latest Version

Peeper will be continually upgraded to add features and correct programming errors as they are detected. In addition, changes to the underlying operating systems may make some features of the program redundant while creating new capabilities that can be enhanced by the program.

### **The policy of Fineware Systems on upgrades to registered users is as follows:**

If you are already a registered user of Peeper, you may be able to update your existing registered version to the latest edition by simply downloading the most recent version while retaining the program's registered features. As program errors and bugs are detected and resolved, Fineware will make available additional releases on the main commercial services such as CompuServe, America Online, and Prodigy.

You may update your existing copy to the new version as long as the version number on the new release is 1.99 or less.

**Special Note regarding version 2.0 of Peeper:** See [Version 2.0](#)

To update an existing installation, simply replace all existing files with any which are included within the zipped file.

If you do not have access to these two commercial online services, then we must provide you with diskettes via regular US Mail.

There is a \$5.00 Shipping/Handling charge for this service. You will receive a complete set of installation disks for the latest release.

Site license holders should contact Fineware Systems for a price quote.

## About PsL

PsL is short for "Public (software) Library". PsL has been distributing public domain and shareware software on disks since 1982. PsL has been recommended in every major (PC) computer magazine, many computer books, and many non-computer publications such as NY Times.

PsL offers a shareware registration order taking service primarily for the benefit of shareware authors and their customers. The service began in January 1989 and presently takes orders for many hundreds of shareware authors.

PsL can take orders via our 800#, non-800#, CIS#, and FAX#. Their operators are available from 7:00 a.m. to 7:00 p.m. CST Monday-Friday and normally from 7:00 a.m. to 4:00 p.m. on weekends. They provide an easy and direct way to register shareware via CompuServe - via e-mail. FAX and credit cards are the primary means of registration for overseas customers.

**Please note** that support and usability problems **are not to be reported to PsL**. They do not have support technicians who are trained about the usage and capabilities of Peeper and simply refer such calls to me anyway "after" charging me a service charge.

## PsL Ordering Information

You can order with **MasterCard, Visa, Amex, or Discover** from Public (software) Library by calling **1-(800) 2424-PsL** or **1-(713) 524-6394** or by **FAX** to **1-(713) 524-6398** or by **CompuServe E-mail** to **71355,470**. You can also mail credit card orders to PsL at **P.O.Box 35705, Houston, TX 77235-5705**.

**THE ABOVE NUMBERS ARE FOR ORDERS ONLY. NOT TECHNICAL SUPPORT.**

[PsL Order Form](#)

**Any questions about the status of the shipment of the order, refunds, registration options, product details, technical support, volume discounts, dealer pricing, site licenses, etc., must be directed to Fineware Systems .**

To insure that you get the latest version, PsL will notify us the day of your order and we will ship the product directly to you.

# PsL Order Form

PsL Order Form (ver 1.19)

**Note:** Select "File-Print Topic" from the menu bar to print this form.

You can order **Peeper** by Phone, Mail or FAX with payment by credit card.

## PsL Product# 11771

Name: \_\_\_\_\_

Company: \_\_\_\_\_

Street: \_\_\_\_\_

Street: \_\_\_\_\_

City: \_\_\_\_\_

State: \_\_\_\_\_ ZIP: \_\_\_\_\_

Country: \_\_\_\_\_

Telephone Number: \_\_\_\_\_

Credit Card Type: \_\_\_\_\_

Credit Card Number: \_\_\_\_\_

Expiration Date: \_\_\_\_\_

Signature: \_\_\_\_\_

**(Unless otherwise requested we ship a 3.5" HD disk)**

<b>Peeper</b>	22.95	_____
Texas residents add 8.25% sales tax		_____
Shipping/Handling - US or Canada	2.00	_____
Shipping/Handling - Outside of US/Canada	4.00	_____
Total in US Funds:		_____

### FAX or Mail

Public (software) Library

P.O. Box 35705

Houston, TX 77235-5705

Orders: 1-800-2424-PsL or 1-713-524-6394

FAX Orders: 1-713-524-6398

By the way, where did you obtain the shareware version  
of **Peeper**: \_\_\_\_\_

## Launch New Viewer

You may have up to 9 file viewers open at a time.

## Exit Program

This button Terminates **Peeper** and closes all open displays within the program.

## Display Mode

You may view files in their native mode (i.e. graphics as images) or you may view the hexadecimal dump by selecting this option box.



## File Icon

This small image when present indicates either the icon of the program itself or in the case of a document, the icon associated with the program used to create the file. In this example, the file type is a Windows bitmap (.BMP) graphic and the program associated with .BMP files is the Windows Paintbrush applet.

You may launch the program or document by using the mouse and clicking on this button.

## Delete File

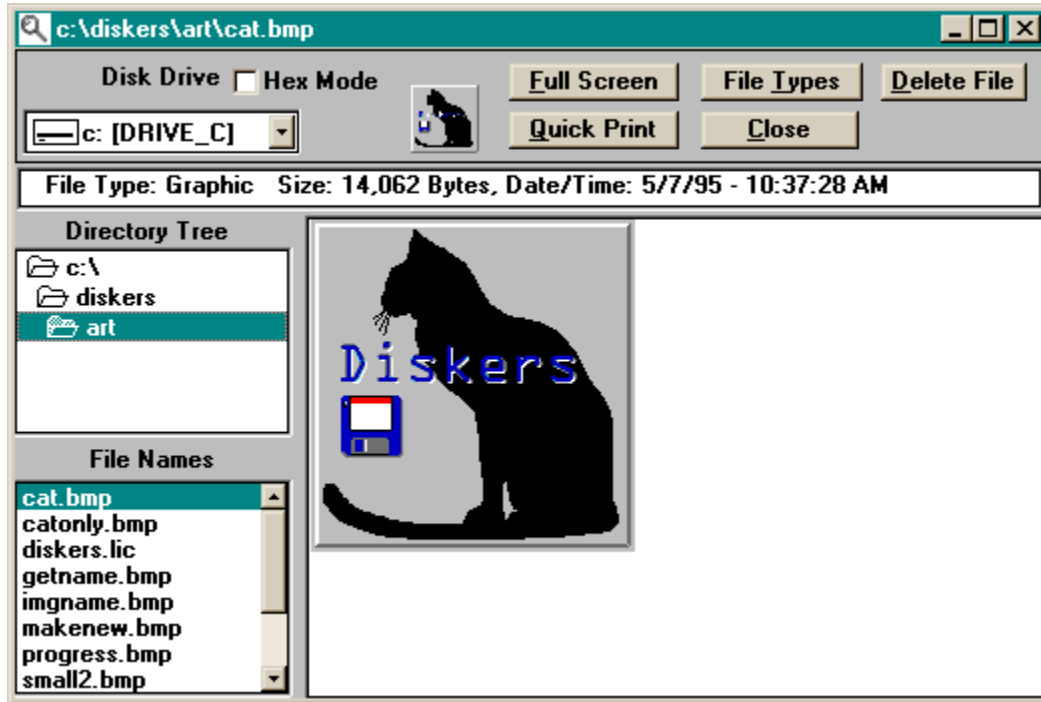
Pressing this button will delete the currently displayed file.

## Close Current Display

This button closes the current window only. Use the close button on the main toolbar to terminate the program.

## Primary View Window

Use the mouse to select specific information about each screen element from the graphics below. Simply click once where you see the mouse pointer change to a pointing finger.



## Displayed File

This is the currently selected file. Depending upon the file type, you may be able to mark and copy the file with the mouse to the Windows' clipboard. Once the file has been copied to the clipboard, you may paste the contents into other programs such as a word processor.

# Oakley Data Services Ordering Info

**PEEPER Ver 1.19**

**Note:** Select "File-Print Topic" from the menu bar to *print* this form.

You can order **Peeper** by Phone, Mail, E-mail or Fax with payment by credit card.

**Oakley Data Services,  
3 Oakley Close,  
Sandbach,  
Cheshire CW11 9RQ,  
England.**

Call +44 (0)270 759739  
Fax +44 (0)270 765272  
CIS: 74774,1347

## **Peeper**

Name: \_\_\_\_\_

Company: \_\_\_\_\_

Address: \_\_\_\_\_

: \_\_\_\_\_

: \_\_\_\_\_

: \_\_\_\_\_

: \_\_\_\_\_

Telephone Number: \_\_\_\_\_

Credit Card Type: \_\_\_\_\_

Credit Card Number: \_\_\_\_\_

Expiration Date: \_\_\_\_\_

Signature: \_\_\_\_\_

(unless otherwise requested we ship a 3.5" HD disk)

Peeper 15.00 \_\_\_\_\_

Shipping/Handling 2.00 \_\_\_\_\_

UK and EEC add 17.5% VAT 2.98 \_\_\_\_\_

Total in Pounds Sterling: \_\_\_\_\_

By the way, where did you initially hear about **Peeper**: \_\_\_\_\_

# CopyCats Software & Services

**Peeper** (ver 1.19)

**Note:** Select "File-Print Topic" from the menu bar to print this form.

Users in Holland, Germany and Belgium who prefer to order locally and pay in their own currency, can order **Peeper** through CopyCats in Holland. Please fill out this form and send it, along with payment, to:

## CopyCats

**CopyCats Software & Services**

**Postbus 1088**

**Phone / Fax: +31 (0) 2207 45993**

**1700 BB Heerhugowaard (after 10/10/95: +31.72.5745993)**

**The Netherlands**

**Email 100121.1562@compuserve.com**

**Peeper**

Name: \_\_\_\_\_

Company: \_\_\_\_\_

Address: \_\_\_\_\_

Country: \_\_\_\_\_

Phone: \_\_\_\_\_ Fax: \_\_\_\_\_

BTW/Steuer # (German and Belgian businesses): \_\_\_\_\_

(unless otherwise requested we ship a 3.5" HD disk)

**Pricing: Peeper**

**Dfl. 49,95**

**DM 49,50**

**985 BEF**

(prices include shipping and 17.5% BTW / MwSt / VAT)

*Please send me:*

Qty. Description: \_\_\_\_\_ Price: Total: \_\_\_\_\_

\_\_\_\_ Peeper \_\_\_\_\_

Order Total: \_\_\_\_\_

Signature: \_\_\_\_\_ Date: \_\_\_\_\_ - \_\_\_\_\_ -19 \_\_\_\_\_

**Method of payment (tag one):**

Enclosed Eurocheque, bankcheque or betaalkaart/Zahlkarte

NL: Overgemaakt aan Postbank 43.28.577

D: Überwiesen an Postbank Saarbrücken Kto.-Nr. 556 33-666 BLZ 590 100 66

B: Overgemaakt aan Postcheque 000-1656064-80

Op rekening / Auf Rechnung (Business/Government only).

By the way, where did you first hear about **Peeper**?

---

And where did you find your copy of **Peeper**?

---

***Dank u voor uw bestelling! - Vielen Dank für Ihren Auftrag!***



## Version 2.0

**Special Note regarding version 2.0 of Peeper:** At the time of the writing (10/1/95), Fineware's plans for the next release of this product are starting to take shape although no release date has been set. Version 2.0 will be specific to **Windows 95** and **WindowsNT**.

**Version 2.0 not run under Windows 3.11 or lower.** Fineware has concluded that many users will migrate to the 32 bit operating systems immediately and we will have a product for them as quickly as possible. A product that will allow them to utilize long file names and other yet to be announced features. However, Fineware also assumes that many users, especially in corporate sites, will be unable to make the move for quite some time. Because of this, the 16 bit version will continue to be marketed and minor bug fixes will be performed as normal. Additional functionality may appear if the continued marketability of the 16 bit version is apparent. Peeper has been tested significantly under **Windows 95** and has been found to be quite robust and functional. Some of the product's additional **Windows 95** capabilities are documented in this help file. Fineware suggest that those who are considering the purchase of this product should look to their present needs first because the upgrade price will be insignificant considering the low purchase price of the product itself.

Since the 16 bit and 32 bit versions of Peeper will be marketed simultaneously, there will be a grace period of 90 days where purchasers of the 16 bit will receive free (Excluding Shipping/handling charges} copies of the 32 bit version.

Version 2.0 is not available as of this writing and we are not taking orders now. Fineware estimates the release of version 2.0 to occur sometime **after** January 1, 1996 and we will begin taking orders at that time.

# Advanced Functionality

## **Drag & Drop Support**

You may select files in the **Windows File Manager** and use the mouse to drag them onto a running instance of **Peeper**. You may drop multiple files at a time but remember that the maximum number of files which **Peeper** can display at a single time is nine.

**Note:** Files dropped from the **Windows 95 Explorer** shell do not need to be dropped on a running version. Simply placing Peeper on the desktop is all that is necessary to utilize the program under **Windows95**. Another way to utilize **Peeper** under **Windows95** is to drop **Peeper** into the **SendTo** folder which is located within your Windows Folder. This allows files to be easily sent to Peeper at any time for viewing.

## **Command Line Functions**

You may launch Peeper using a file name. For example, you could issue the command to run Peeper as follows:

```
C:\Peeper\Peeper.exe C:\misc\ReadMe.Txt
```

and **Peeper** would execute with this file already loaded. You may also use **Peeper's** full screen capability from the command line by adding a forward slash and the letter M after the file name. Example:

```
C:\Peeper\Peeper.exe C:\misc\ReadMe.Txt /M
```

## **Printing**

You may use your choice of two different methods to print the file you are currently viewing. See Printing for more information on this topic.

## **File Associations**

For files which do not have a regular editor such as .WMF files, you may use the File Manager associations to assign them to **Peeper**. This will allow you to double\_click on them within File Manager and launch **Peeper** with the file loaded.

## **Fonts and Colors**

You may use your choice of font styles, sizes, etc. within the file viewing area. In addition, the background and foreground colors is totally under user control. Use the pull down menu to set color options.

## **Auto Termination**

The launch of **Peeper** will terminate existing instances of **Peeper**. If you need to view multiple documents at the same time, launch a second viewer from within the current instance of **Peeper**.

## Full Screen Mode

You may view the document in full screen mode by pressing this button.

## P & A Shareware

**Fineware programs can be registered locally in Japan. For more detail and information on prices, etc. contact:**

P. & A. Shareware  
1-3-6-2 Kamisunacho  
Tachikawa, Tokyo 190 Japan

Tel: 0425-35-9901  
Fax: 0425-35-9902

Nifty: PAF02461

# Printing

**Peeper allows you to print documents using **two** different methods.**

## **Method 1: Use Controlling Application to Print**

Peeper uses the file associations which are established for your computer to select the program which creates/maintains the document that you wish to print.

For example, if you use Microsoft Word as your word processor, then the normal default file name extension for a Word document is .DOC . When you use the Print button (or pull down menu selection) against a .DOC document, then the printing capabilities of Microsoft Word itself are used to print the document. This allows the printed pages to retain all font selections, formatting, even graphics that are used within the document. In addition, some programs such as Microsoft Excel 5.0 and above provide additional printing options for your selection.

If there is no controlling application, then the document is printed under Method 2 described below.

**Note:** You may optionally highlight a portion of the text within the document. When a print operation is requested while text is highlighted, then the highlighted text only is printed under Method 2.

## **Method 2: Use Peeper to Print**

Peeper prints by selecting the text and dumping it to the printer. This is very quick and suitable for small text files. Virtually no formatting is retained unless the document contains embedded ASCII formatting codes such as carriage returns & line feeds.

## File Information

Information describing the currently displayed file.

## Pull Down Menu

Standard pull down menu which contains options for running the program as well as functions.

## Select Fonts

Press this button to select the fonts used by the program.

### **You may assign fonts to the following items**

- Display - Normal font within the display window
- Fixed - Optional display font that is useful for viewing print image files
- Printer - Font used when a file is printed using Peeper's own print capabilities. Refer to Printing for more details.



## Program Mascot

Press here to view the program's **About Screen**.

## Fixed Font

Select this option to use a fixed font for the viewing area. This is helpful when the original document was produced using fixed fonts such as computer generated reports.

# Glossary



## **A**

AI Meadows

## **E**

embedded

## **F**

Fineware Systems

## **H**

hexadecimal

## **P**

PsL

## **S**

sniff out

## **T**

top notch

## **V**

version information

**Fineware Systems**

Fineware Systems

PO Box 75776

Oklahoma City, OK 73147

## **AI Meadows**

Custom programming services available.

**top notch**

According to Ziff-Davis's shareware reviewer Preston Gralla.

**sniff out**

Basis for the program's name.

**embedded**

Stored within the file itself



**version information**

Used to identify the name, description, release, copyright and other information related to the file. This information is optional and is placed within the file by the developer of a Windows program module.

**PsL**

Public (software) Library

P.O. Box 35705

Houston, TX 77235-5705

## **hexadecimal**

Numbering System using base 16. The decimal numbering system is base 10. The number 0 through 9 is equivalent in both numbering systems. At the number TEN, a base 10 system requires two positions. A base 16 system represents the base 10 numbers 10,11,12,13,14, & 15 as A,B,C,D,E & F. In Hex, the number 256 would be represented as FF.



