



This help file is in support of the WIPackage File Builder from Stillwater Systems, Inc. The WIP File Builder program (WIPBuilder) is designed to build WinIntelligentPackage (WIP™) files for software distribution purposes. As a creator of WIP files you will be able to send your customers, colleagues, friends and neighbors a single, compressed package file that contains other software that you wish to provide to them. But there is more...lots more!

First of all, the compression algorithm used in the construction of WIPackage files is one which most of us are very familiar with, PkZip, pioneered by PkWare, Inc. This ensures the optimum in compression ratios. The primary difference between ZIP and WIP files is that a WIP file has the ability to distribute it's file contents to the directories specified by the WIP file creator. The recipient of any WIP file simply executes the WIPackage File Distributor program by double-clicking a WIP file from File Manager. The WIP file is automatically unpacked and distributed to the appropriate locations. No longer will you have to provide a README or INSTALL text file to instruct the recipient on how to place the files that you have provided. It's really that simple. Yes, it's a ZIP file with a brain!

Please select any of the options below to learn more about WIP files.

[What is New in Version 1.2](#)

[What was New in Version 1.1](#)

[Creating WIPackage Files](#)

[Updating WIPackage Files](#)

[Reviewing WIPackage Files](#)

[Deleting WIPackage Files](#)

[All About Destination Paths](#)

[Other Distribution Options](#)

[Answers to Common Questions](#)

[All About WIPackage File Distributor](#)

[Credits and Acknowledgments](#)

[Warranties and Disclaimers](#)

[How to Register WIPBuilder](#)

[Index](#)

WIPBuilder 1.2 includes the following enhancements from version 1.1:

- **The ability to set the existing file overwrite option by file (see the button labeled "Set Overwrite Options" in main dialog)**
- **Added command line processing option. A parameter file can now be constructed (see \$sample\$.wcl in the WIPBLDR directory) that provides instructions to WIPBuilder to automatically construct a single or multiple WIP files, depending on the parameters provided. Be sure to associate the file extension (your choice) with WIPBLDR.EXE. The extension of .WCL is used only as a sample and is not mandatory. The association will allow you to run the parameter file (or double-click the parameter file from File Manager) to automatically launch WIPBuilder.**

WIPBuilder 1.1 includes the following enhancements from version 1.0:

- **Ability to convert a WIP file into a standard ZIP file (like performing a lobotomy on a WIP file!) See the "Convert to ZIP" option on the File menu**
- **Expanded comment dialog with ability to include a message to all recipients by enclosing message text in [] characters (WIPDistributor 1.0c required by recipients)**
- **Improved "About" dialog box for registered users**
- **Credit card registration available thru PsL, product id# 14047**

NOTE: Please see the screen sample at the bottom of this topic. It contains hot-spots that will reveal much more information on the main dialog window.

This topic will explain how to create a WIPackage file. The main function of WIPBuilder is to create WIP files. The dialog facilitates the construction of a WIP file contents list. Once the list is constructed and other options have been selected, WIPBuilder will pack all the designated files into the WIP file, including the instruction set for distributing the files on the recipient's PC.

Here is a list of steps required to create a WIP file:

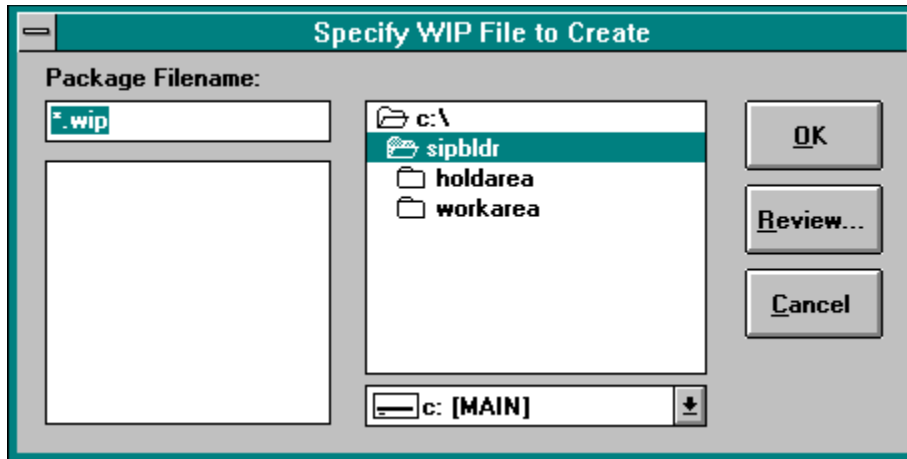
- 1 Select the 'Create' option from the 'Package' menu or press F2**
- 2 Specify the name of the WIP file to be built**
- 3 Define a default destination for the files in the WIP file (optional)**
- 4 Define a password to encrypt the WIP file (optional)**
- 5 Enter a comment for the WIP file (optional)**
- 6 Build the WIP file content list**
- 7 Build the WIP file**

Here are some examples of the dialogs you will encounter while creating WIP files.

To create a new WIP file, hit F2 or select 'Create WIPackage File' from the 'File' menu as show here.

File	Help
C reate WIPackage File	F2
U ppdate WIPackage File	F3
D elete WIPackage File	F4
E xit	

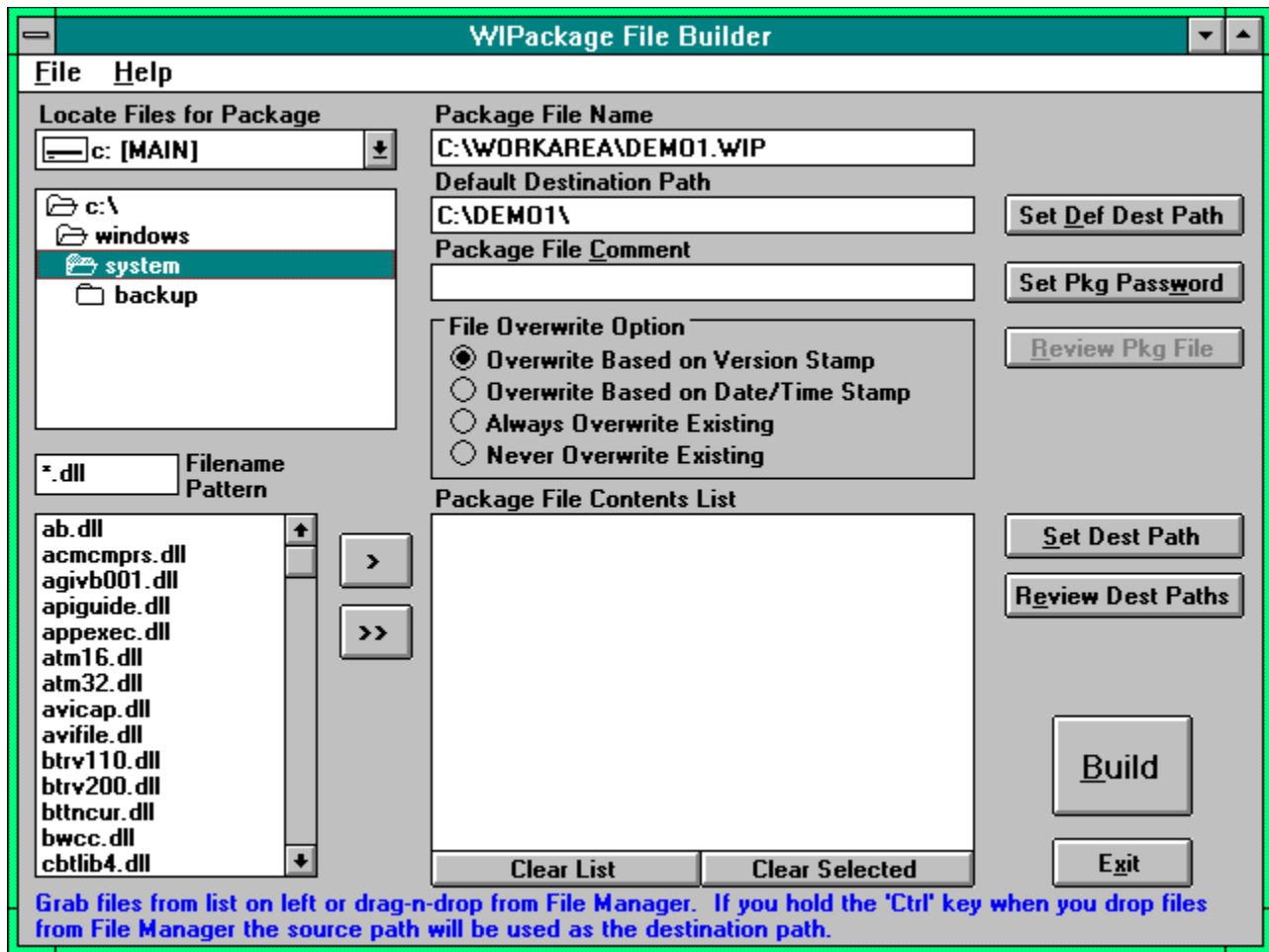
The first thing to do is specify the WIP file name. The following dialog is presented:



If you select a WIP file that already exists, you will be asked to verify your actions. You can rebuild any existing WIP file from scratch but if you really want to update the file, use the 'Update' option (F3) from the 'File' menu.

You may also review the contents of an existing WIP file by clicking on the 'Review' button.

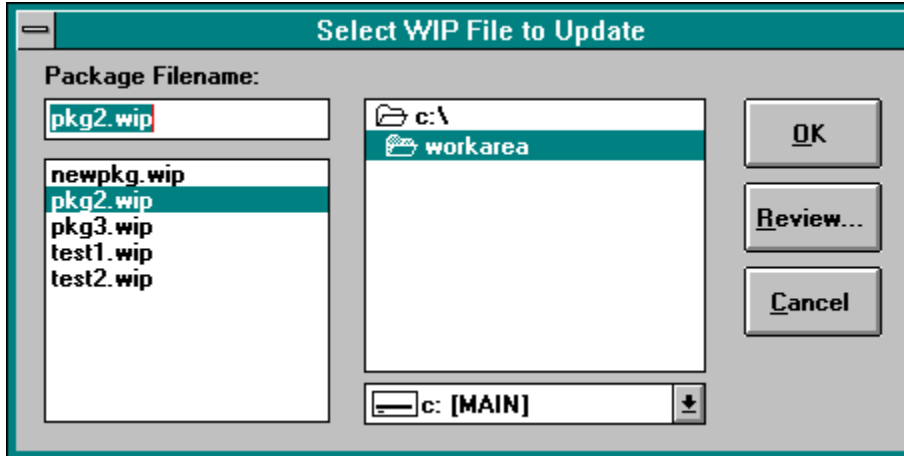
Here is a picture of the main WIPBuilder dialog. The picture contains hot-spots that will reveal more information about the dialog window.



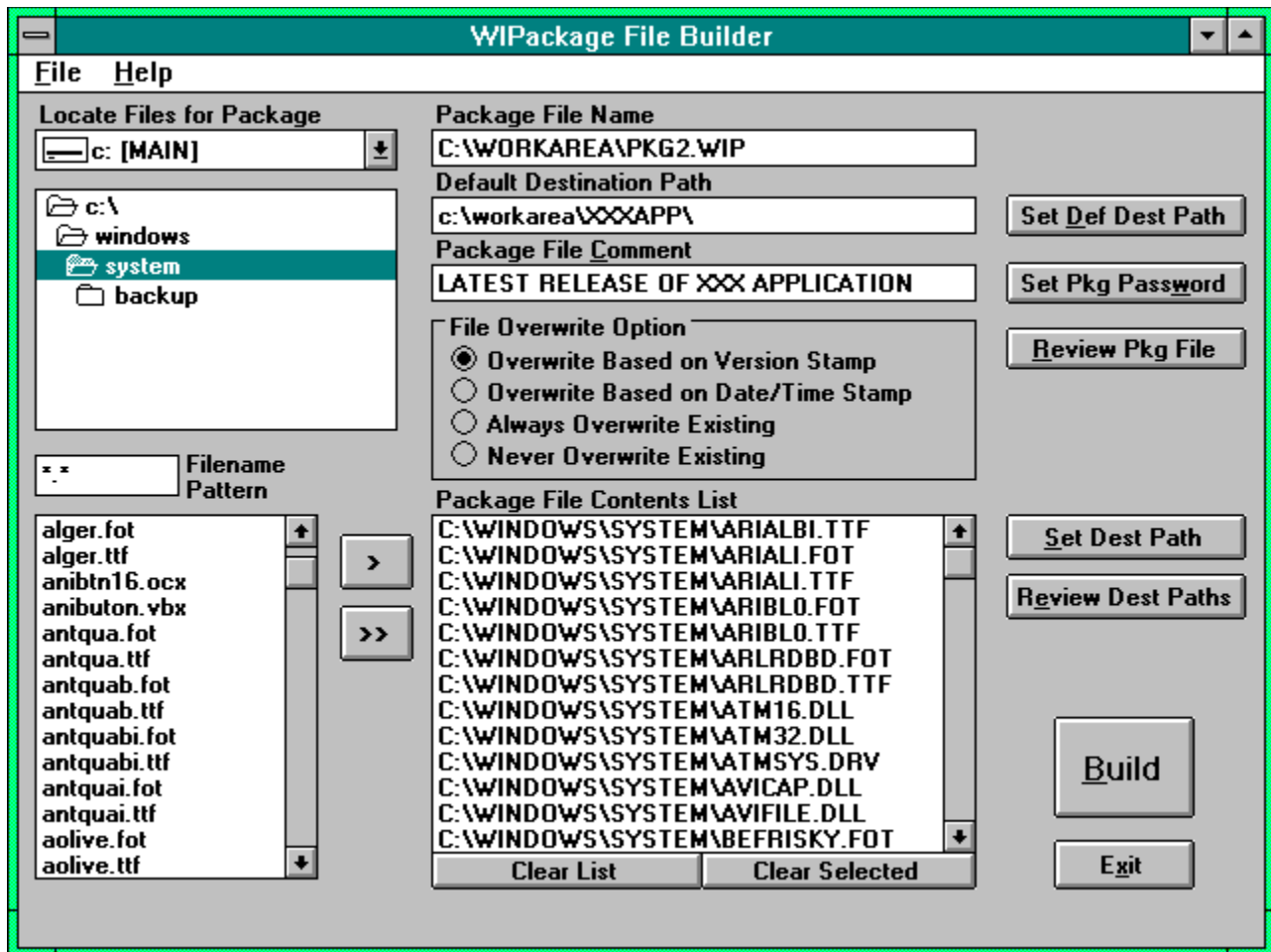
Existing WIP files can be updated or rebuilt from scratch using WIPBuilder. To update an existing WIP file, press F3 or select the 'Update' option from the 'File' menu as shown here:

File	Help
C reate WIPackage File	F2
U ppdate WIPackage File	F3
D elate WIPackage File	F4
E xit	

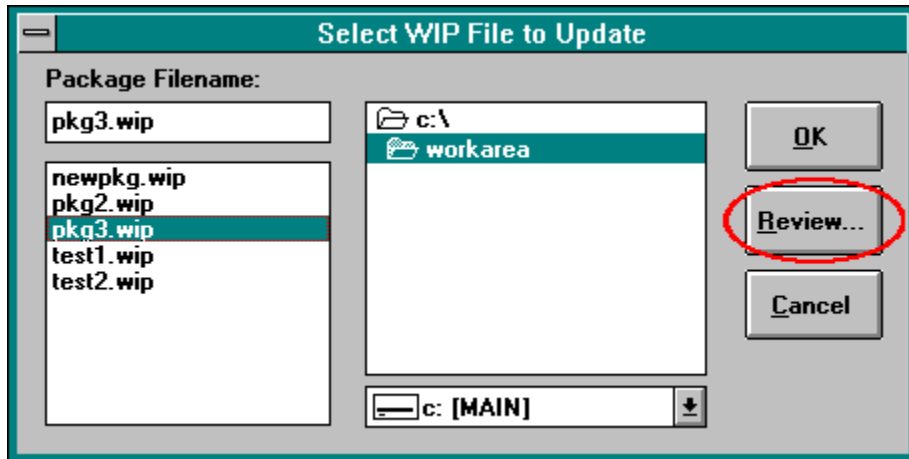
The following dialog will be displayed to help you find the desired WIP file:



After you have selected the WIP file to update, the main dialog will appear with the contents of the WIP file already loaded in the various fields as shown below. You can add or remove files from the package, change destination paths, add a password or add a comment. Simply click on the 'Build' button to re-construct the file.



The contents of a WIP file can be reviewed from a few different places. When you select an option from the 'File' menu you can choose to review a WIP file as shown here:



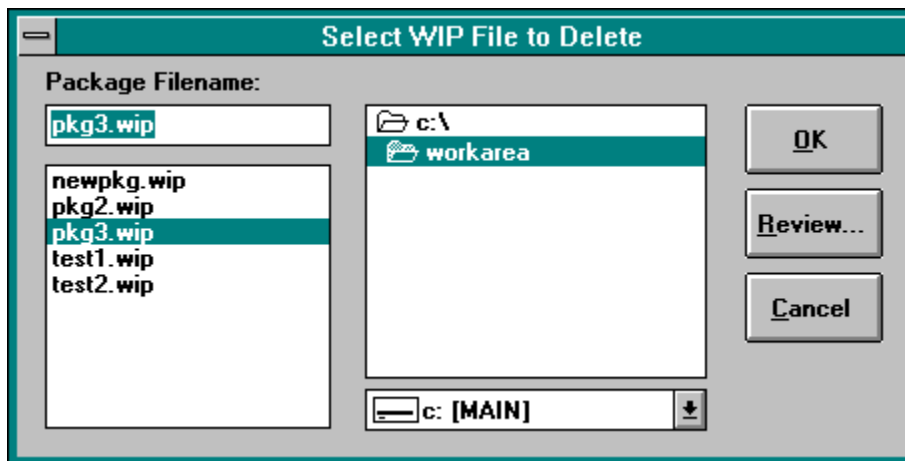
After you have opened a WIP file for update, you can click on the 'Review Pkg File' button in the main dialog window.

After you build a new WIP file you will be presented with the option to review the newly created WIP file.

Do delete an existing WIP file, press F4 or select the 'Delete' option from the 'File' menu as shown here:

File	Help
<u>C</u> reate WIPackage File	F2
<u>U</u> ppdate WIPackage File	F3
<u>D</u> elete WIPackage File	F4
Exit	

The following dialog box will be displayed to help you find the WIP file to delete.

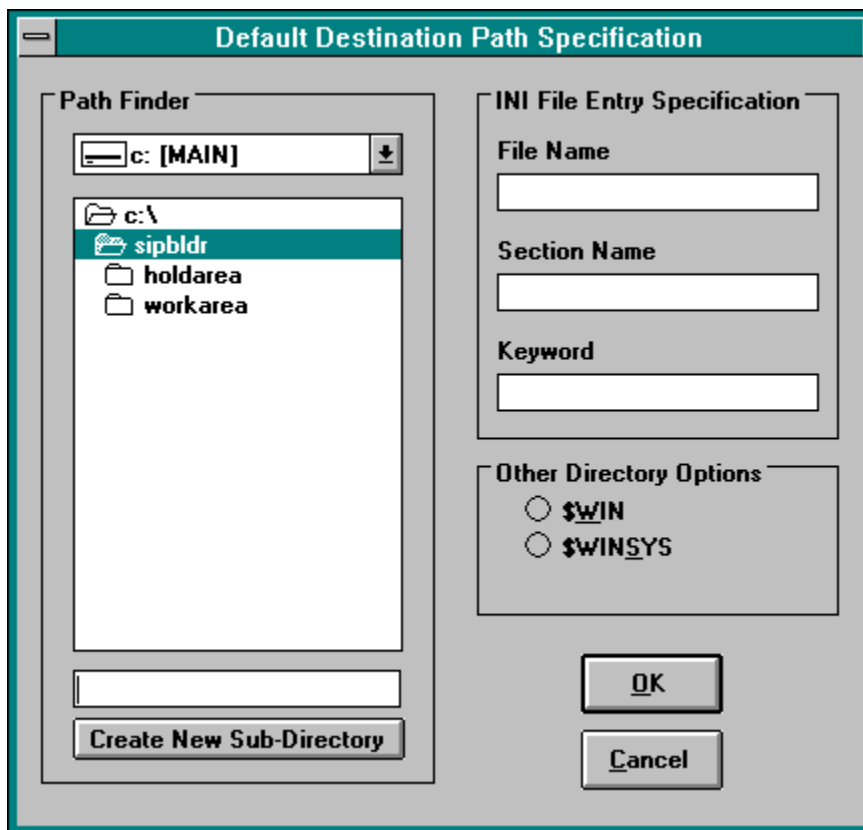


After selecting the appropriate WIP file, click the OK button to proceed with the deletion.

Each file in a WIPackage can be directed to its own unique destination or to the same as other files in the package. The destination path specification can be either a full directory specification, a pointer to an INI entry that contains the path, a recipient-selected path, the recipient's Windows directory or the recipient's Windows\System directory.

When you start to create a new WIP file, you may specify a default destination path. This path will be used as the default for files as they are included in the WIP package content list. Files are included in a package by clicking on the > or >> buttons or by dragging and dropping files from File Manager. The file's source path is automatically set as the destination path. If you hold the 'Ctrl' key down while selecting files then the default destination path is used as the destination path for the files. The default destination path will be used when an INI entry lookup fails on the recipient's PC. Also, this path is presented as the default value when a the user is asked to supply a destination path for those files tagged with \$RECIP_SELECTS as their destination.

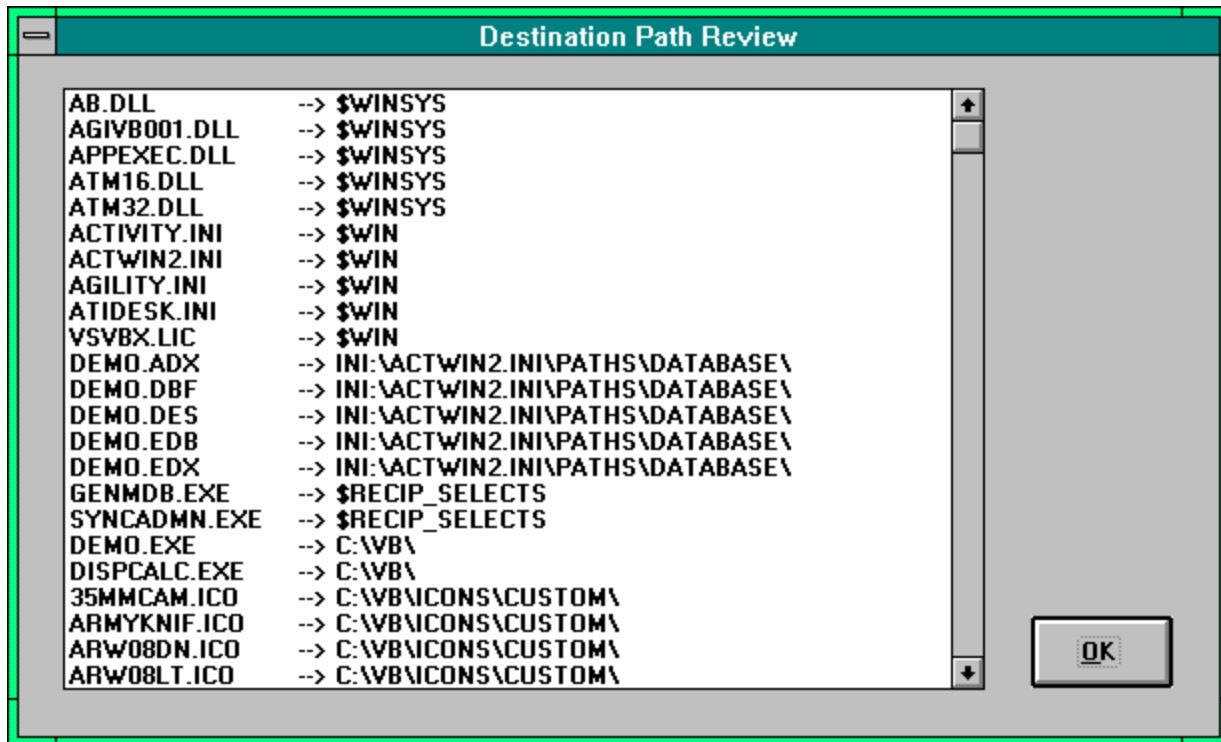
The following dialog appears when you choose to define a package default destination path. The picture contains hot-spots that will tell you more about the dialog.



You can change the destination path of any file in the contents list by selecting the file then clicking on the 'Set Dest Path' button found to the right of the contents list. If you select multiple files, the destination path will change for all selections.

To review the destination paths, click on the 'Review Dest Paths' button found to the right of the

contents list. The following recap screen will be presented.



Notice the key words of \$WIN, \$WINSYS and \$RECIP_SELECTS. The WIPDistributor will ask the recipient to specify a single path for all the files tagged with \$RECIP_SELECTS. The WIPDistributor determines the recipients Windows and Windows\System directories for placement of those files. The path specs that start with INI:\ will direct the WIPDistributor to obtain an actual path found the designated entry. For example, given the following ACTWIN2.INI file on the recipients PC:

```
[Paths]
Database=C:\ACTWIN\DATABASE
Template=C:\ACTWIN\TEMPLATE
Docs=C:\ACTWIN\DOCS
```

the spec of INI:\ACTWIN2.INI\PATHS\DATABASE would evaluate to C:\ACTWIN\DATABASE
the spec of INI:\ACTWIN2.INI\PATHS\DOCS would evaluate to C:\ACTWIN\DOCS

If an INI lookup fails during the distribution process for any reason, the default destination path will be used.

Three additional features of a WIPackage File are the ability to add program groups and icons to your recipients Windows desktop, add file type associations to your recipient's registry, and to update INI files on your recipient's PC.

All the options require the WIP file creator (that's you!) to build parameter files and include them in the WIP file. Two sample parameter files were included with the WIPBuilder installation package, \$SAMPLE\$.ADX and \$SAMPLE\$.IUX. (we had to use X as the last character so that the file contents were not actually processed when the WIPBuilder package was distributed. Make sure you use the .ADI and .IUP extension when you construct your own Add Icons and INI Update files.

*Note: when you include .ADI and/or .IUP files in a WIPackage, do not worry about the associated destination paths. The files will not be distributed on the recipients PC.

For example, you can create a file named XXXX.ADI (Add Icons parameter file) in Windows Notepad to look something like this:

```
[Group Info]
Group Name=A New Application
Group File=anewapp.grp
Num Items=4

[Item 1]
Command Line=?\anewapp.exe
Icon Title=A New App Program

[Item 2]
Command Line=c:\somedir\bogus.doc
Icon Title=Sales Proposal

[Item 3]
Command Line=?\readme.txt
Icon Title=Read Me

[Item 4]
CommandLine=
Icon Title=Demo Program
Action=Delete
```

Notice the ? in the command line for items 1 and 3. This instructs the WIPDistributor to use a path specified by the package recipient in place of the ?. Notice the Action parameter provided for Item 4. The default action is Add but you may also delete existing program items by including an Action=Delete line in your .ADI file. The Action option is also available for deleting a group. Simply include an Action=Delete line in the [Group Info] section.

Note: Each .ADI file can only accommodate one program group with many program items, though your WIP package may contain multiple .ADI files. You must name the Add Icons parameter files with an extension of ADI.

You can also use an .ADI file to add new file type associations to the recipients registration database.

File type associations will enable certain files to be double-clicked or "Run" without the need of a program name to be specified. Here is a sample of the entries required to update the registration database:

```
[Associate Info]
num items=2
(how many association requests follow)

[Associate 1]
Long Name=Test.New.Assoc
Short Name=TestNew
Program Name=c:\windows\newprog.exe
Extension=xxx
(adds association of .xxx files to c:\windows\newprog.exe)

[Associate 2]
Long Name=Sync.ADI.Files
Short Name=SyncADI
Program Name=notepad.exe
Extension=adi
(adds association of .adi files to notepad.exe)
```

To execute INI file updates, you can create a file name ZZZZ.IUP (INI Update parameter file) to look something like this:

```
[Update Control]
NumUpdates=2

[Update 1]
file=wipbldr.ini
section=Information
keyword=WorkingDirectory
value=?\workarea\

[Update 2]
file=wipbldr.ini
section=Information
keyword=HoldDirectory
value=?\holdarea\
```

Notice the ? in the value lines. This instructs the WIPDistributor to use a path specified by the package recipient in place of the ?.

Note: You only need a single .IUP file per WIP package. Be sure to enter the correct value in the NumUpdates line. You must name the INI Update parameter file with an extension of IUP.

Can I include WIP files within other WIP files?

Can I distribute WIPDistributor to anyone I want?

Can a WIP file replace a custom developed setup program?

Can a WIP file be Emailed to recipients?

Are WIP files compatible with PkZip?

Can a WIP file be unzipped using PkUnZip?

Can WIPBuilder create a ZIP file?

Yes, definitely. A WIP file is treated like any other file so you can include WIP files within WIP files. This is a good way for you shareware developers to include a license file with the software. The license file can be put into a password encrypted WIP file that is then included in the main WIP file. Upon registration you can simply EMail your customer with the password to the encrypted WIP license file.

Please do! We want everyone to have a copy of WIPDistributor. The README.TXT that came with this package has a section on distributing WIPDistributor. As you experienced when you ran the WIPDistributor setup program, we included the WIPBuilder application in a WIP file named AUTODIST.WIP. The setup program saw the AUTODIST.WIP and immediately launched WIPDistributor to unpack and distribute it's contents. You can do the same by building a WIP file named AUTODIST.WIP, include it with the WIPDistributor setup files and you're all set!

Well, possibly. If your application setup requirements include only the distribution of files, the addition of program groups and icons and INI file updates, then chances are good that you a WIP file can handle the requirements. As you experienced, our setup routine for WIPBuilder was fully contained in a WIP file named AUTODIST.WIP.

Yes, by all means! This is a great way to distribute files in a corporate environment. Just give WIPDistributor to everyone and you'll be all set. WIP files have been successfully tested in a Window NT/AS and MSMail environment. It's even great for remote users accessing a network via RAS. Other networking environments should also work fine.

When a WIP file is sent as an MSMail attachment, the recipient can simply double-click the attachment icon in the letter, and WIPDistributor will take off and do it's thing!

In general, yes. The compression library used in creating WIP files are directly compatible with PkWare's PkZip and PkUnZip utilities. A more recent version of PkZip (2.04g) supports a new compression algorithm call 'deflating'. This and previous algorithms are supported by WIPDistributor and WIPBuilder.

Yes, the primary contents of a WIP file can be unzipped with PkUnZip and other ZIP utilities without any problem. A WIP file does contain some information that we at Stillwater Systems, Inc. consider to be proprietary and is copyrighted. That information can not be unzipped with PkUnZip or any other ZIP utility in DOS or Windows.

In essence, WIPBuilder is creating a ZIP file but with some additional, much needed intelligence. You can take any WIP file and rename it with a ZIP extension and you'll have a ZIP file. (Although, take a look at the answer to the above question)

With version 1.1 you can convert a WIP into a ZIP file using the "Convert..." option from the File menu. This method will avoid problems with our proprietary information.

As you may have already experienced, the WIPackage File Distributor (WIPDistributor) is packed with some great features. Not only does it contain the "smarts" to handle WIP files, but it's also a great, quick unzipper! At setup time the user can choose some options that can later be edited in the WIPDIST.INI file. Following is a recap of the main features of WIPDistributor.

- **Unpacks and distributes the contents of any WIP file**
- **Has version number checking capabilities**
- **Optionally provides the user with the ability to preview the contents of a WIP file, including detailed file information, specific file review capabilities (such as looking at a README) and single file unpacking BEFORE the distribution occurs**
- **Creates a complete and detailed log file for every WIP distribution**
- **Provides the ability for a user to unpack password-encrypted WIP files**
- **Can add or delete program groups and items to/from the recipients Windows desktop**
- **Can update INI entries on the recipients PC**
- **Can add file type associations to the recipients registration database**
- **Will unzip any ZIP file into its own, unique sub-directory**
- **Provides a "double-click, no-brainer" method for software distribution**
- **Costs nothing, zero, zilch, \$0, absolutely FREE!**

The compression library used for WIPBuilder and WIPDistributor is Compression Plus from MicroHelp, Inc. originally developed by EITech Development, Inc. MicroHelp can be contacted at:

MicroHelp, Inc.
4359 Shallowford Industrial Parkway
Marietta, GA 30066
FAX (404) 516-1099
Ph# (800) 922-3383

This help file was built using VisualHelp from WinWare Inc. WinWare can be contacted at:

WinWare Inc.
P.O. Box 2923
Mission Viejo, CA 92690
FAX (714) 586-9792
CompuServe: 70272,1656

The File Manager drag-n-drop capabilities were made much easier by the inclusion of the FMDROP VBX from Mabry Software. Mabry Software can be contacted at:

Mabry Software
P.O. Box 31926
Seattle, WA 98103-1926
Ph# (800) 996-2279
Ph# (206) 634-1443
FAX (206) 632-0272

Special thanks to:

Steve de Carteret for his contribution of ideas to this project.
Bill Irving for his contribution during the testing phase.
Laurel Goyena for helping test the application.
Gateway 2000 for an awesome Pentium P5-90 on which WIPBuilder and WIPDistributor was written.
Microsoft Corporation for developing Visual Basic

WinIntelligentPackage, WIP and Synchronicity are trademarks of Stillwater Systems, Inc.
Windows is a trademark and Visual Basic is a registered trademark of Microsoft Corporation.
Compression Plus is a trademark of EITech Development, Inc.
PkZip is a trademark of PkWare, Inc.

All other trademarks belong to their respective companies and owners.

This software and documentation

(c) Copyright 1995 Stillwater Systems, Inc. All rights reserved.

DISCLAIMER:

To the maximum extent permitted by applicable law, Stillwater Systems, Inc. disclaims all warranties, either express or implied, including but not limited to implied warranties of merchantability and fitness for a particular purpose.

NO LIABILITY FOR INCIDENTAL DAMAGES:

To the maximum extent permitted by applicable law, in no event shall Stillwater Systems, Inc. be liable for any damages including but not limited to loss of business profits, business interruption, information loss, or any other loss resulting in the use or inability to use this product.

Stillwater Systems, Inc.

32248 N.E. 94th Street
Carnation, WA 98014
CompuServe: 72643,604

To register WIPBuilder, please use SWREG in CompuServe, GO SWREG. The ID# for WIPBuilder is 5095. You may also send a check for US\$45.00 to the address above. If you're from outside the U.S., add an additional \$5.00. Please include your EMail address on the check. To pay by credit card please the PsL at 1-800-242-4775 and register product number 14047. Please note that PsL is only to be called to register WIPBuilder using a credit card. All support questions must be EMailled to Stillwater Systems, Inc. at 72643,604.

If you're looking for a more complete software distribution system, ask us about Synchronicity. With WIP files as it's nucleus, Synchronicity provides the systems administrator with a database application that builds WIP packages, facilitates the distribution of the packages to your user community and then tracks the status by package and recipient.

[≡](#)
<#>
[A](#)
[B](#)
[C](#)
[D](#)
[E](#)
[F](#)
[G](#)
[H](#)
[I](#)
[J](#)
[K](#)
[L](#)
[M](#)
[N](#)
[O](#)
[P](#)
[Q](#)
[R](#)
[S](#)
[T](#)
[U](#)
[V](#)
[W](#)
[X](#)
[Y](#)
[Z](#)

<#>

[.ADI](#)

[.IUP](#)

A

[acknowledgments](#)

[add files](#)

[adding program groups](#)

[adding program items](#)

[ADI files](#)

[All About Destination Paths](#)

[All About the WIPDIST INI File](#)

[All About WIPackage File Distributor](#)

[alter](#)

[alternate path](#)

[always overwrite](#)

[Answers to Common Questions](#)

[associate](#)

[automatic delivery](#)

B

[Build File](#)

[build](#)

C

[change](#)

[Clear List](#)

[Clear Selected](#)

[command line option](#)

[comment](#)

[contents list](#)

[Contents](#)

[cost](#)

[create](#)

[Creating WIPackage Files](#)

[credit card](#)

[Credits and Acknowledgments](#)

[credits](#)

D

[date/time stamp](#)

[Def Dest Path](#)

[Def Path Finder](#)

[default destination path](#)

[delete program group](#)

[delete program item](#)

[delete WIP file](#)

[delete](#)

[Deleting WIPackage Files](#)

[destination directories](#)

[destination paths](#)

[document](#)

[drag-n-drop](#)

[drag-n-drop](#)

E

[editing INI files](#)

[encryption key](#)

[encryption](#)

[existing files](#)

[Exit App](#)

F

[file conflicts](#)

[file contents review](#)

[File Manager](#)

[File Manager](#)

[File Menu](#)

[file type association](#)

G

[Grab All](#)

[Grab Selected](#)

[grabbing files](#)

H

[handling existing files](#)

[Help Menu](#)

I

[including files into a WIPackage](#)

[Index](#)

[INI entries](#)

[INI file edits](#)

[INI Filename](#)

[INI Keyword](#)

[INI Section](#)

[install](#)

[IUP files](#)

L

[log directory](#)

M

[Message Area](#)

N

[never overwrite](#)

[new features](#)

[new](#)

O

[options](#)

[Other Dir Options](#)

[Other Distribution Options](#)

[overwrite options](#)

P

[package preview](#)

[package review](#)

[Password Encrypting a WIP File](#)

[password](#)

[password](#)

[Pkg Comment](#)

Pkg Content List

price

program groups, adding

program items, adding

Q

Q1A

Q2A

Q3A

Q4A

Q5A

Q6A

Q7A

R

recap

recipient specified paths

regedit

registration database

registration

remove files

remove

review destination paths

Review Pkg File

review

review

Reviewing WIPackage Files

S

security

selecting files

setup

Source Dir

Source Drive

Source Files

Source Pattern

start

Stillwater Systems

swreg

T

tools

U

update

Updating WIPackage Files

user specified paths

V

[version 1.1](#)

[version number](#)

W

[Warranties and Disclaimers](#)

[What is New in Version 1.1](#)

[What is New in Version 1.2](#)

[Windows System](#)

[Windows](#)

[WIP Filename](#)

[WIP review](#)

[WIPDistributor](#)

Here is a sample snapshot of a typical WIPDIST.INI file:

```
[Information]
UnpackDirectory=C:\WINDOWS\UTILS\WIPDIST\WORKAREA\
(just a work area)

LogDirectory=C:\WINDOWS\UTILS\WIPDIST\LOGS\
(where all the .log files are stored)

BackoutDirectory=C:\WINDOWS\UTILS\WIPDIST\BACKOUT\
(work area for backout package creation)

[Options]
PauseAtStartup=Yes
(presents the user with a list of the WIP file contents prior to
distributing)

AutoDeleteAfter=Yes
(can be used to automatically delete the WIP file after successful
distribution. Works only for WIP files residing on C: drive)

EncryptionKey=
(can be set to hold a standard encryption key to be used with all WIP
distributions)
```

The WIPDistributor program also has a command line option available. If "-a" or "-A" (auto-deliver flag) is found following the WIP filename, the WIP distribution occurs without user intervention or input required. For example, from Program Manager or File Manager:

```
File, Run C:\WORKAREA\NEWSTUFF.WIP -A
```

When the "Auto-deliver" flag is used, any messages that would have been presented to the user is written to a special log file named WYymmdd.LOG (where yymmdd is the current date) and can be found in the log directory specified in the WIPDIST.INI file.

Build WIPackage File

Click this button to pack the selected files into the specified WIP file. Be sure to review the destination paths before you build. Upon completion of the build, you will be given the option to review the new constructed WIP file. The WIP file will be ready for distribution (even if you choose not to review it).

Clear List

Click this button to completely clear the WIP content list.

Clear Selected

Click this button to clear all selected files from the WIP content list.

Default Destination Path

This box will display the default destination path for the WIP file contents.

Path Finder

Use the drive and directory list box to find the path that you want to specify as the destination path. You may enter a new directory name in the box at the bottom. You can choose to create the new directory but it is not required.

Exit WIPBuilder

Click this button to exit the program.

File Menu

This menu provides the options of creating, updating or deleting WIP files. An 'Exit' option is also available.

Grab All Files

This button will pull all of the files in the list on the left into the WIP contents list. If you hold the 'Ctrl' key down while clicking this button, the default destination path will be used as the destination path. If you do not hold the 'Ctrl' key down, the destination path for the files will be set equal to the file's source path.

Note: You may also drag-n-drop files from File Manager. The 'Ctrl' key works in the same way.

Grab Selected Files

This button will pull the selected files in the list on the left into the WIP contents list. If you hold the 'Ctrl' key down while clicking this button, the default destination path will be used as the destination path. If you do not hold the 'Ctrl' key down, the destination path for the files will be set equal to the file's source path.

Note: You may also drag-n-drop files from File Manager. The 'Ctrl' key works in the same way.

Help Menu

The Help menu facilitates quick access to this help file. You can choose to go to the Contents of the help file or you can perform a keyword search. The 'About' dialog box is also accessible from the Help menu.

INI Filename

This is where you enter the name of the INI file. You should be confident that your recipients all have the specified INI on their PC. If the INI file is not found then the default destination path will be used.

INI Keyword

This is where you enter the INI entry keyword value. For example, the keyword here is "LAYOUTS".

```
[Some Section]
```

```
LAYOUTS=c:\someapp\stuff
```

INI Section

This is where you enter the INI entry section name. For example, the section name here is "TEMP PATHS".

```
[TEMP PATHS]
```

```
database=c:\someapp\db
```

```
notes=c:\someapp\notes
```

Message Area

This area will display messages as the mouse moves around the screen. Be sure to read the message. They are very helpful!

Other Destination Directory Options

The \$WIN option will direct the WIPDistributor program to determine the user's Windows directory and use it as the destination path.

The \$WINSYS option will direct the WIPDistributor program to determine the user's Windows System directory and use it as the destination path.

The \$RECIP_SELECTS option (not available as the default) will direct the WIPDistributor program to obtain the destination path from the recipient. All files within a given WIP that are tagged with \$RECIP_SELECTS will go to a single directory. The recipient only specifies the path one time.

Overwrite Options

Designate here what the WIP Distributor routine should do when a file to be distributed already exists in the target destination path.

The first option directs the WIP Distributor to use the internal version number of the two files to determine whether or not to copy the incoming file over the existing file. The higher version number will take precedence. If version numbers do not exist in either file, the file's date/time stamps are evaluated and the newer file will take precedence. This is probably the best option in most cases, thus it is set as the default.

The second option directs the WIP distributor to use the file's date/time stamps. The newer file will be take precedence.

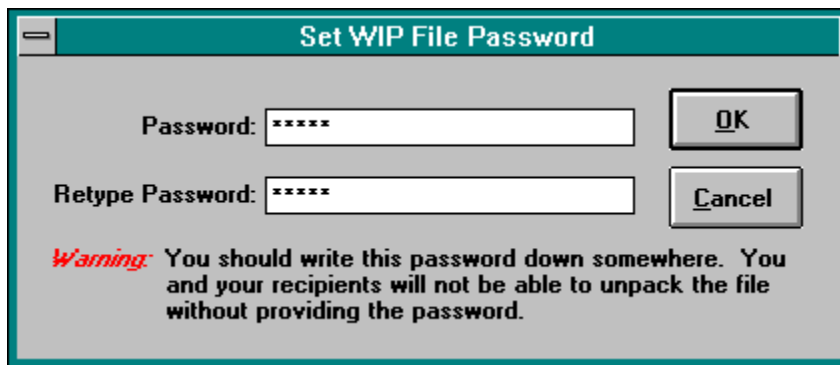
The third option directs the WIP distributor to always overwrite existing files with the incoming file. Be careful with this option.

The fourth option directs the WIP distributor to always leave existing files intact.

You may choose to encrypt a WIP file with a password. This will prevent unauthorized recipients from unpacking the WIP file. If you are a shareware developer you can build a password encrypted WIP file that contains a license file for your software. You can distribute the license WIP file with your product and then simply provide registered users with the password to the license WIP file.

Here are instructions on password encrypting a WIP file.

- 1 Create a WIP or select an existing one to update
- 2 Click on the 'Set Pkg Password' button (or Alt-W) and the following dialog will be displayed
- 3 Enter the selected password in both boxes then click on the 'OK' button
- 4 Click the 'Cancel' button if you decide not to use a password



WIPBuilder will check that you have entered the same value in both password boxes.

WIPackage File Comment

You may enter a comment of any WIP file. This comment can be viewed by your recipients. It may also prove useful in documenting the contents of the WIP file.

WIPackage File Contents List

This list will contain all of the files that you select for inclusion in the WIP file. The source path will be listed along with the name of each file.

Note: You can use the directory and file lists on the left to select files for the WIP file or you can drag-n-drop files from File Manager.

Review Package File

When you have a WIP file open for update, you may click on this button to review it's contents.

Source Directory Tree

When selecting files to be included in the WIP file, use this directory list box to find particular directories on your PC.

Note: You may also drag-n-drop files from File Manager.

Source Drive

When selecting files to be included in the WIP file, use this drive box to change drives on your PC.

Note: You may also drag-n-drop files from File Manager.

Source Files

The contents of this list is based on the selections made in the above drive and directory lists. You can use the > and >> buttons to grab files from this list for inclusion in the WIP file. The 'Ctrl' and 'Shift' keys can be used to select multiple files from the list.

Note: You may also drag-n-drop files from File Manager.

Source File Pattern

Change the value to filter or expand the contents of the list below. The '?' and '**' wild cards are allowed.

WIPackage Filename

This field will display the name of the WIP file that is being created or updated.

backout package

Not fully supported at this time.

