

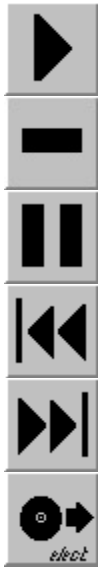


List of Topics

- [Features of CD Tray](#)
- [Controls](#)
- [Digital Displays](#)
- [Artist/Title Window](#)
- [Songs Window](#)
- [Disks Window](#)
- [Menu Commands](#)
- [Dialogs](#)
- [Tools](#)
- [Graphics Windows](#)
- [Driver Setup for CD ROM Audio in Windows](#)
- [Compact Disk Record Entries](#)
- [Miscellaneous Information](#)
- [Registration](#)
- [Product Support](#)

Controls

Click on the Control for help on that Control.



These controls make CD Tray perform the various playing functions just like a real CD player.

Artist / Title Window

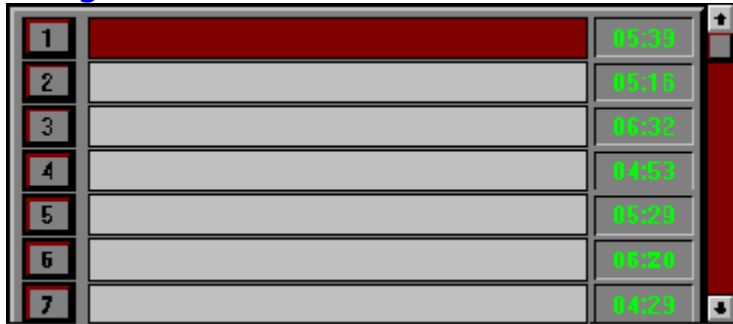
Artist	Title

The Artist / Title Window contains only two edit entries. They are used to input the Artist's name and the Title of the Compact Disk.

When entering the Artist and Title information, press the Tab to move the input focus between the two inputs. Press Shift-Tab to move backwards. Press Return when you are done inputting the Artist and Title information.

After inputting or editing information in this window, choose Save Disk Info from the Disk Menu to save your edits to the CD Library. CD Tray will prompt you if you forget.

Songs Window



1		05:39
2		05:15
3		08:32
4		04:53
5		05:29
6		06:28
7		04:23

The Songs Window is where the song titles are displayed. The titles are initially blank and you must input them. No song title information is contained on an audio compact disk. Listed beside each song edit line, are the lengths of that corresponding track on the compact disk. Note that the lengths may not match exactly any lengths that are written on the compact disk. However, these are the track lengths that are returned to CD Tray from the compact disk. Lengths between songs probably accounts for some of the discrepancy.

A scroll bar is provided to scroll the window up or down to tracks not currently shown. You may also use the Up/Down arrows and PgUp/PgDown to scroll this window. The song currently playing or programmed will be shown in red.

When entering track titles, pressing the Tab key will move the input focus to the next track's input entry line. Press Shift-Tab to move backwards. Press Return when you are done inputting track titles. Pressing Return will erase the flashing caret within the song title edit controls and return focus back to the Songs Window.

After inputting information in this window, choose Save Disk Info from the Disk Menu to save your edits to the CD Library. CD Tray will prompt you if you forget before exiting.

To the left of each song, are Play buttons which you may click on to play a song instantly. If CD Tray is currently playing, it will skip to that track. If CD Tray is stopped, that track will start playing. These buttons are disabled when CD Tray is in program mode.

Disks Window



Disk	Artist	Title
1		
2		
3		
4		
5		

In the Disks Window, you may browse the compact disks that are in the Disk Library. You may also edit the information contained in each record.

Scroll bars are provided to scroll the window vertically to disks not shown and horizontally to reveal other fields in the compact disk record. You may also use the Up/Down, Right/Left arrows and PgUp/PgDown to scroll this window. Note that pressing the Ctrl key while pressing one of the above keys will scroll the window in larger increments.

Also, when the Disks Window is active, the Library menu item is enabled.

Double click with the mouse on a compact disk record entry to enable the Disk Edit dialog for the disk. This dialog allows editing and deleting of individual compact disks.

Menu Commands

Disk Window Control Tools Library Help

Click the menu item for a description of that item.

You may press F1 at any menu item for context sensitive help on that menu.

Dialogs

Disk Edit Dialog - Used by the Disks Window, allows editing of a compact disk record in the Disk Library.

Print Dialog - used to control printing of the Disk Library.

Filter by Category Dialog - select a Category of compact disks to be browsed in the Disks Window.

Compact Disk Library Information Dialog - presents a summary of various information about the Compact Disk Library.

Tools

Fast Forward / Rewind Dialog - A tool used for fast forwarding, rewinding and cueing.

Segment Play Dialog - A tool used to play track passages. It is used primarily for recording purposes or amusement.

Track Programming Dialog - A tool that allows you to choose the particular tracks you wish to play on the compact disk.

Review Program Dialog - A dialog which lists the tracks that are currently programmed.

Continuous Play - Makes CD Tray exit program mode. Tracks will then be played in order. This item is only displayed when CD Tray is in program mode.

Restart Current Track - selecting this will make CD Tray restart the track that is currently playing. This item is disabled when CD Tray is stopped.

Track Repeat - Select this item to make CD Tray play the current track continuously. When this menu item is checked, Track Repeat is on.

Disk Repeat - Select this item to make CD Tray play the current compact disk continuously. When this menu item is checked Disk Repeat is on.

More Tools - reveals another popup menu with tools or programs you wish to execute from CD Tray.

Add a Tool - allows you to specify other tools or programs you wish to execute from CD Tray.

Delete a Tool - presents a dialog with which you may delete any of the user-defined tools added to CD Tray's Tools menu.

Graphics Windows

These windows are for show only and just might make listening to music at your computer a little more relaxing.

Look for new, more specialized windows in future versions of CD Tray! The possibilities are endless.

Product Support

Technical Support will be provided through two means:

- 1) By mail to JenJen Software.
- 2) Electronically through CompuServe. (Compuserve ID# 73700,3137)

Note: Please include your phone number in case a phone call is required.

Technical Support is unlimited to registered users.

Also, if you have suggestions for the improvement of CD Tray, please contact JenJen Software. **All suggestions are welcome!**

CD Tray
Audio Compact Disk Player and Compact Disk Library

© 1993 JenJen Software
7 Kettering Lane
Hampton, VA 23666

Compuserve ID# 73700, 3137

A Control is one of the large buttons on CD Tray.
These buttons control operation of the player for Playing, Stopping, etc.

These buttons are duplicated on the Menu.

Play the compact disk loaded in your CD ROM drive.

This control is disabled if the CD ROM is currently playing or there is no disk in the CD ROM drive.

CD Tray mode in which you choose the particular tracks you wish to play on the compact disk. You may choose as many or as few tracks as you wish.

Stop playing the compact disk in your CD ROM drive.

This control is disabled if the CD ROM is currently stopped or there is no disk in the CD ROM drive.

Pause or Resume playing the compact disk in the CD ROM drive.

If CD Tray is paused, clicking this control will resume play.
This control is disabled if the CD ROM is currently stopped
or there is no disk in the CD ROM drive.

Skip LEFT to previous track.

If CD Tray is currently playing, the previous track will start playing. If CD Tray is stopped the previous track will be cued for playing.

If CD Tray is in Program Mode the previous track that is programmed will be played or cued.

Skip RIGHT to next track.

If CD Tray is currently playing, the next track will start playing. If CD Tray is stopped the next track will be cued for playing.

If CD Tray is in Program Mode the next track that is programmed will be played or cued.

Eject the compact disk from the CD ROM drive.

This control is disabled if the CD ROM is currently playing or there is no disk in the CD ROM drive. The Eject button on your CD ROM drive will still eject the disk while playing.

Compact Disk Record Entries

CD Tray uses the following record structure for compact disk records in the Disk Library.

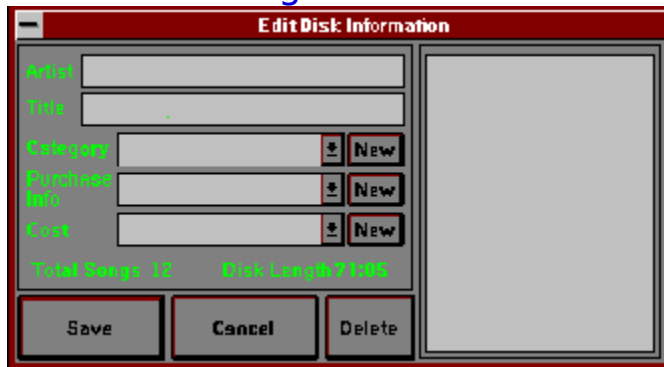
All the information must be input for each disk.

Artist	- name of the performer, ie "Fleetwood Mac"
Title	- name the performer has given to the disk, ie "Rumours"
Category	- a musical category for the disk, ie "Soft Rock"
Purchase Information	- any other information you would like to keep about this disk. An example might be the place the disk was purchased.
Cost	- The amount of money paid for the disk or what you think the monetary value of this compact disk is worth.
Songs	- The song titles the performer has given the songs on this compact disk. Up to 50 songs may be stored. All song time information is also stored here.
The time	information is stored automatically by CD Tray.
Favorite Tracks	- a <u>track program</u> , if any, that has been saved by CD Tray.

The CD Library is a database of all your compact disks. The files are CDTRAY.DAT & CDTRAY.IXC. The .DAT is the data file and the .IXC file is the index file. Both are necessary to run CD Tray and both must be in the directory specified by the entry "DbDirectory=" in the CDTRAY.INI configuration file. CDTRAY.INI will be located in the WINDOWS default directory.

Cueing is positioning the read mechanism of the CD ROM drive to a certain position on the compact disk.

Disk Edit Dialog



The Disk Edit dialog provides a means to edit the different fields of a compact disk record in the Compact Disk Library.

You may edit the Artist and Title information previously entered into the Artist / Title Window.

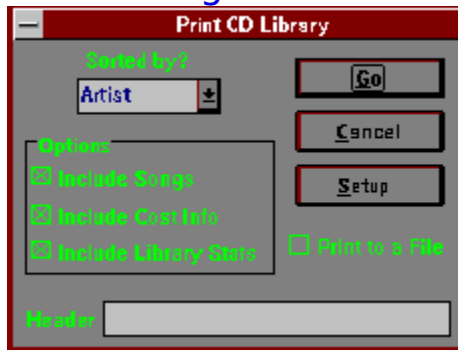
Instead of edit controls, combo boxes are used to input the other informational type fields. These combo boxes contain each unique entry for that field in the Compact Disk Library. If you wish to enter new information, click the New button beside that corresponding field. This will present a dialog for entering the new information. Enter the information and click Ok to save.

Also, in this dialog is a list box for the song titles for this compact disk. Each song title is preceded with the length of the track. Click on the song title. This will present a dialog to edit the song title. Enter the information and click Ok to save.

After editing any of the compact disk record's information, click the Save button to save or click Cancel to discard the edits.

If you wish to delete this compact disk from the Compact Disk Library, click the Delete button. After confirmation, the disk will be deleted.

Print Dialog



This dialog is used to control printing compact disk records from the Compact Disk Library.

Various options are allowed when printing. First, choose the sorted order for the disks. The default is by Artist. Use the check boxes to control the printing of certain information. When checked, the information will print. When not checked, that information will not be printed.

You, optionally, may enter a Header into the Header edit control. This text will be printed at the top of each page of output.

You may print to a file instead of the printer by checking the Print to a File check box.

To set options specific to your printer, click the Setup button.

After setting any of these options, click the Go button to start printing. After printing starts, an abort print dialog will appear that allows cancelling the printout.

The Sorted Order specifies the field that controls the alphabetic order that compact disk records will be listed in. For example, sorting by Artist might make Alan Parsons Project the first record and ZZ Top the last.

Miscellaneous Information

These are general notes on the operation of CD Tray.

[Back Up Your CD Library!](#)

[Exiting CD Tray](#)

[Timers](#)

[Releasing Memory](#)

[CDTRAY.INI](#)

[Bug Reporting](#)

[Version Information](#)

[License Information](#)

[Disclaimer](#)

[Credits](#)

BackUps

It is a good idea to make frequent backups of your Compact Disk Library. The database is kept in two files, CDTRAY.DAT and CDTRAY.IXC. For maximum safety, keep the database files on a floppy disk or tape storage device. Even keeping the files copied to different filenames on your hard disk provides a margin of safety against lost data as long as your hard disk doesn't fail.

Also keeping an up to date exported text file of your database is a good idea. To export the text file, choose Disk Library from the Windows menu to enable the Library menu. Next, choose Export Text File from the Library menu. Enter a filename . This will create the text file.

This file can then be reformatted if necessary and read into other applications. Alternately, bring the file into NotePad or a similar word processing program and cut and paste into other applications.

Exiting CD Tray

It is **IMPORTANT** that you close CD Tray normally by exiting from the Disk Menu. Turning off your computer while CD Tray is running could corrupt the database and make it unusable. (Another reason to make backups!) This is not a normal occurrence, but is dependent on the state of your computer and what kind of manipulations you have been doing with the CD Library database files. A good precaution against this is to choose Close CD Database in the Disk; Options menu while you are playing disks and not doing any editing of the database. This also releases memory back to Windows for use by other applications.

Timers

CD Tray uses Windows timer messages for all updating of digital readouts, track highlighting and so forth. The CD ROM drive is polled approximately once every second. Unchecking the CD Polling menu item in the Disks; Options menu will turn this polling off. Turning polling off can minimize the "stress" on Windows while using other applications and listening to music. Polling is automatically turned off if CD Tray is minimized to an icon on the Windows desktop.

In addition, another timer is used if CD Tray is in program mode. However, this timer is not turned off while CD Tray is minimized. This allows program mode operation while CD Tray is minimized. In program mode, other Windows applications that use timers could affect the synchronization of the program mode timer. It is best to not use other Windows applications which use a lot of timers while CD Tray is in program mode.

Yet another timer is used while viewing a graphics window. This makes for a maximum of 3 timers that CD Tray will use if CD Polling is On (checked), CD Tray is in program mode and viewing a graphics window at the same time. Windows currently provides 16 timers so this should not adversely affect Windows' operation.

Releasing Memory

To release more memory back to Windows while listening to music with CD Tray, close the Compact Disk Library and minimize CD Tray to an icon on the Windows desktop. This also turns off the CD ROM drive polling which leaves Windows a little less "stressed" and able to devote more time to other applications.

Description and Features

CD Tray is a Compact Disk Audio Player and Audio Compact Disk Database program for Windows. CD Tray combines the look and feel of a real CD Player with an easy, but powerful means of storing and categorizing disks into a Compact Disk Library.

Features of CD Tray are:

- * Compact Disk Artist/Title recognition after input into the CD Library.
- * Stores Song Titles and Compact Disk time information.
- * Track Programming.
- * Shuffle Play
- * Save a favorite track program for each disk in your CD Library.
- * Fast Forward / Rewind / Cueing.
- * Segment Play to play a fixed length passage while recording.
- * Track Repeat.
- * Disk Repeat.
- * CD Library capacity of over 2 billion Compact Disks with multiple sort keys.
- * CD Library filtering by categories of music in the CD Library.
- * Store dollar value and purchase information for each Compact Disk in your CD Library.
- * Disk Library summary and statistics.
- * Disk Library exporting capability.
- * Ability to run other user-defined Windows programs from CD Tray.
- * Custom 3-D look which mimicks a real CD player.
- * Animated graphics diversion windows for greater music enjoyment.
- * Real-time digital readouts of track number, track length, number of tracks, duration, time remaining, etc.
- * All the controls of a real CD player (Play, Stop, Pause, Skip etc.)
- * Complete Windows Help file.
- * The author's firm commitment to future improvements and added features as well as free customer support for registered users.

CDTRAY.INI

CDTRAY.INI is a configuration file for CD Tray. This is where certain options are set so they will be reset each time CD Tray is run.

Here are explanations of the current entries in CDTRAY.INI:

DbDirectory=

This option allows setting the path to the CD Library database files on the hard disk. By default, this path is the WINDOWS default directory and this is the location that CD Tray will first create the files. You may change this entry to another directory.

For example: DbDirectory=C:\MMEDIA\CDTRAY

This example specifies to CD Tray that the location of the CD Library database files are located in the above directory. Be sure to copy the files to the directory or they will be recreated the next time CD Tray is run.

ToolName= , ToolPath=

These specify the menu item names and the directory paths to any user-specified tools that have been set using the Add Tool... menu item. You should not have to set these entries as it is much easier to let CD Tray set them for you using Add Tool...

ToolName is the menu item name.

ToolPath is the directory path to the executable program.

An example of this kind of entry might look like this.

Tool1Name=Pocket Recorder

Tool1Path=c:\win\prec.exe

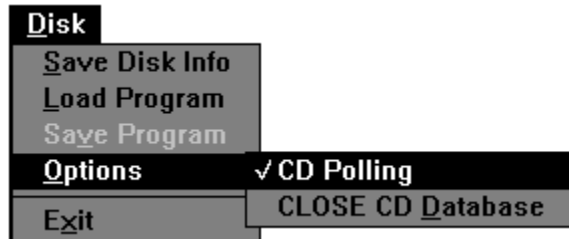
License Information

CD Tray is a Shareware product. As such, it is made available to the general computing public for evaluation. Users are licensed to operate CD Tray on their personal computers for the purpose of test and evaluation on a trial basis for a period of **no more than two weeks**. If the user decides the program is not of sufficient merit to warrant purchase through **registration with JenJen Software**, program use should cease and the program files should be deleted from the computer it is installed upon. Otherwise, if the program is deemed useful and is in regular use, registration with JenJen Software is required.

Registered users are those users that elect to pay for CD Tray and register that payment with JenJen Software. By virtue of registration and payment for the program, registered users are granted a license to continue to utilize the program for as long as they choose. This license authorizes the user to use the program on any personal computer system so long as the program is operated on only one computer system at a time.

If you are already a registered user, THANK YOU for purchasing CD Tray! The Shareware concept is a good way for software authors to distribute their software without the marketing headaches. It is only people who register and pay for shareware software, like you, that makes it all possible.

Disk Menu



Click the menu item for a description of that item.

Save any changes made to the current compact disk record.

Load a saved program for this compact disk.
This item is disabled unless the current compact
disk has a program that you have saved previously.
CD Tray will load the program, and go into
program mode.

Save the current track program. This item is disabled unless CD Tray is in program mode.

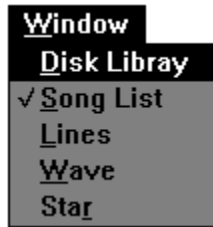
Invoke a menu of optional items.

This turns off the CD ROM drive polling which allows Windows to be a little less "stressed" and able to devote more time to other applications. If checked, polling is on. This is the default. This polling is also turned off by minimizing CD Tray to an icon on the Windows desktop. Note that if CD ROM drive polling is turned off (unchecked) that all digital readouts such as Track Time and Elapsed Time will cease to function. In addition, if polling is off, CD Tray will not detect that the CD ROM drive has stopped, playing or paused. Turning off polling will not stop the CD ROM drive from playing and all controls on CD Tray will still work.

This will close the Disk Library database files. If the Disk Library is closed, the menu will change so that selections that pertain to using the Disk Library will not be available. This also releases some memory back to Windows for use by other applications. You should use this to close the files to guard against improper closing of CD Tray (ie. shutting off the computer without exiting the program).

Exit the program. If any of the current disk's information has been edited and not saved, you will be prompted whether or not you wish to save it.

Window Menu



Click the menu item for a description of that item.

The current window shown inside CD Tray will be checked.

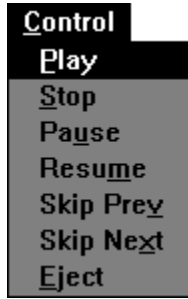
Invokes the Disk Window where you may browse and edit the disks in the Disk Library. This menu selection is not available if the Disk Library is closed.

Invokes the Songs Window where you may edit the song titles for the current disk and instantly play tracks on the current disk.

Invoke an animated graphics window. These windows are for show only and just might make listening to music at your computer a little more relaxing.

Look for new, more specialized windows in future versions of CD Tray! The possibilities are endless.

Control Menu



Click the menu item for a description of that item.

Pause playing the compact disk in the CD ROM drive.

This control is disabled if the CD ROM is currently stopped or there is no disk in the CD ROM drive.

Resume playing the compact disk in the CD ROM drive.

This control is disabled if the CD ROM is currently stopped or there is no disk in the CD ROM drive.

To Filter a database means a field is chosen from the record to filter by. Some criteria is given about that field and only records that match that criteria are listed.

Category Filter Dialog



In this dialog you are presented a combo box from which you may choose a category to filter the Disk Library by. The combo box will contain every unique music category you have entered for disks in the Disk Library. You may choose one of these and only those records whose music category field matches the filter you selected will be listed in the Disks Window. At least one record will be shown. Select <All Categories> to display all records. Select <No Category> to display records whose category is blank.

Compact Disk Library Information Dialog

This dialog presents a summary of various information about the database. Some is more useful than others. If you have some suggestions on other statistical summary information that can be derived from a database such as this, please contact JenJen Software with your suggestions.

Digital Displays

TRACK 04 TRACK TIME 04:39 ELAPSED TIME 17:44

TRACKS 09 DURATION 46:21 REMAINING 28:37 STATUS **PLAY**

Click on the digital readout for a description.

Note that the time lengths displayed here may not match exactly any lengths that are written on the compact disk. However, these are the lengths that are returned by the compact disk to CD Tray. Any differences noted should not be more than a few seconds.

Current track that CD Tray is playing or is ready to play.

Time remaining to play for the current song.
This display counts down from the length
of the track to 00:00.

The elapsed amount of time that has played from the beginning of the compact disk. This display counts from 00:00 to the length of the disk.

Total number of tracks that are on this compact disk. This display changes only after ejecting the present disk and inserting a new one.

Total length of time this compact disk will play.
It is the sum of the lengths of all the tracks plus
any time at the start, between songs, and at the
end of the disk. These times vary greatly between
different disks.

Remaining time left to play on this compact disk.
This readout counts down from the length of the
disk to 00:00.

This is a status indicator that indicates what CD Tray is currently doing. This display will indicate Play, Stop and Pause. It will be blank when no disk is inserted in the CD ROM drive.

Fast Forward / Rewind Tool



This tool allows control of Fast Forward, Rewind and Cueing operations for CD Tray. The current track that is playing or is next to be played is the target of its operations. This tool can be executed at any time except when CD Tray is in program mode.

The current song title is displayed at the top of the dialog. The current position of the scroll bar's thumb, relative to the length of the current track, is displayed above the scroll bar. The length of the track is displayed to the right of the scroll bar.

The scroll bar controls the Fast Forward, Rewind and Cueing operations. Clicking on the scroll bar will increment/decrement the current playing position by 10 seconds. Clicking the arrows at either end of the scroll bar increments/decrements by 1 second. You may also drag the scroll bar thumb to increment/decrement in larger amounts.

When CD Tray is playing, this tool controls Fast Forwarding and Rewinding. CD Tray will skip to the position indicated by the scroll bar's thumb and continue to play.

If CD Tray is stopped, Cueing is performed. After positioning the scroll bar's thumb to the position desired, clicking the Play Control will start CD Tray playing from the position set by the FFwd/Rew tool.

This dialog is a modeless dialog. This means that you may leave the dialog in view on the screen and still have access to the controls, menus, etc. of CD Tray. By leaving this tool in view while CD Tray is playing you can watch the thumb move automatically to the relative position of the current track that CD Tray is playing.

Keep in mind that this tool works for the current

track that is playing or is next to play. You may use CD Tray's Skip Right and Skip Left controls to move to a different track if desired.

Segment Play Tool



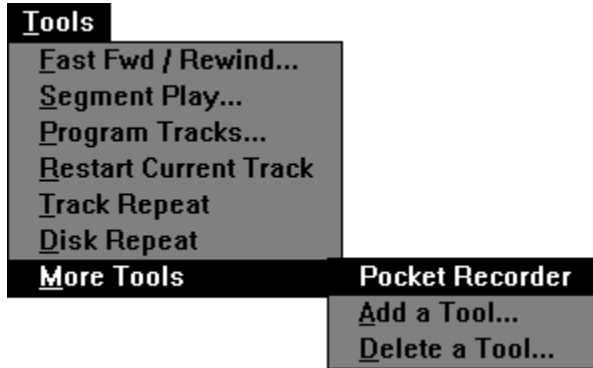
This tool allows a small segment of the current track to be selected. Selection in this sense means selecting a starting position for the current track and then selecting an ending position. CD Tray will play the segment from start to finish and then stop. The primary purpose of this tool is to control play while recording though playing segments of certain tracks can be mildly entertaining.

This tool can only be selected from the menu if CD Tray is stopped and is not in program mode.

Using the tool is easy. The top scroll bar controls the starting position of the segment to be played. The bottom scroll bar controls the ending position of the segment to be played. The relative position to the current track is displayed above each scroll bar. After selecting the segment to be played, press the Go button to begin play. You may press the Go button as many times as you wish to play the segment. Both scroll bars will not allow movement of the its' thumb into an invalid part of the scroll bar. In other words, moving the scroll bar's thumb that controls the end of the segment to a position that is previous to the beginning of the segment is not allowed and the scroll bar will not allow that movement.

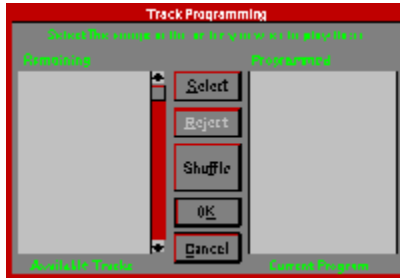
This dialog is a modal dialog. This means that while the dialog is in view on the screen, access to the controls, menus, etc. of CD Tray will not be available. However, you can switch to other applications using the mouse or by pressing the Alt-Tab combination.

Tools Menu



Click the menu item for a description of that item.

Track Programming Dialog



This dialog is used to program CD Tray. Programming means that individual tracks from the current compact disk can be selected to be played. The tracks can be selected in any order and as many or few as desired. This track program can be saved, if desired.

When first displayed, all the songs will be listed in the 'Available' list box on the left. These tracks are available for programming. The 'Programmed' list box on the right, lists the tracks that are programmed. It is initially empty.

Above each list box the total time length of all the songs contained in the corresponding list box will be displayed. The programmed length will increase as tracks are programmed while the available length will be decreased by the same amount.

Programming CD Tray is easy. To select a track click on the track and then click the Select button. Alternately, you may double click the track title to do the same thing. This will move the track title from the 'Available' list box to the 'Programmed' list box. You also may remove a track from the 'Programmed' list back to the 'Available' list box by selecting the track and clicking the Reject button. Again, you may double click the track to accomplish the same thing.

If you wish to play the tracks in a random order, click the Shuffle button. This will move all of the tracks from the 'Available' list box to the 'Programmed' list box. You may click the Shuffle button as many times as desired and you also may remove tracks from the 'Programmed' list box as described above.

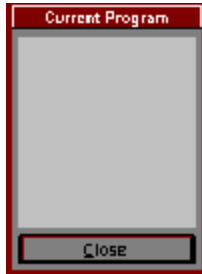
After the tracks are programmed that you desire to play, click the Done button. This will launch CD Tray into program mode. The Review Program dialog will appear to the right of CD Tray listing the program and the

first track programmed will be highlighted in red in the Songs Window.

To start the program, click the Play Control or select Play from the Control menu. All of CD Tray's controls (and corresponding menu items) can still be used. One difference is skipping to the next and previous tracks using Skip Right and Skip Left will cause CD Tray to skip to the next or previous track that is programmed. Stopping CD Tray while in program mode will cancel program mode and return CD Tray to Continuous Play.

While CD Tray is in program mode, you may save the current program for this disk in the Disk Library. This is done by selecting the Save Program menu item in the Disk menu. One program may be saved for each disk in the Disk Library. If a saved program already exists, it will be overwritten.

Review Program Dialog



This is a dialog which lists the tracks that are currently programmed. This dialog appears automatically after tracks are programmed using the Track Programming tool. The dialog can be closed, if desired, by clicking the Close button. If it is closed, and CD Tray is still in program mode, it can be recalled by selecting the Review Program menu item in the Tools menu.. The Review Program menu item is only available if CD Tray is in program mode.

Selecting this item will make CD Tray
restart the track that is currently playing.
This item is disabled when CD Tray is
stopped.

Select this item to make CD Tray play the current track continuously. When this menu item is checked, Track Repeat is on.

Select this item to make CD Tray play the current compact disk continuously. When this menu item is checked, Disk Repeat is on.

Add a Tool Dialog

Adding a tool allows you to specify other tools or programs you wish to execute from CD Tray. You will specify the name you wish to put on CD Tray's menu and the executable program name. You may add up to 5 items to this menu. Put an ampersand (&) in front of the letter of the menu item name to make it the hot key for the item. Be careful not to duplicate any other hot keys you have defined on this popup menu.

The Add Tool dialog will be displayed. You can type in the information yourself or click the Browse button. This will present a file dialog that can be used to browse through the directories of your hard disk to find the executable (.EXE) file. Likely candidates for some tools to add to CD Tray's Tools menu are Mixers, WAV Recorders etc.

Delete a Tool Dialog

This dialog is used to delete any of the user-defined tools added to CD Tray's Tools menu. Select the tool from the combo box, and click Ok to confirm.

Reveals another popup menu with tools or programs you wish to execute from CD Tray.

An example of a user-defined tool.

Adding a tool allows you to specify other tools or programs you wish to execute from CD Tray.

Presents a dialog with which you may delete any of the user-defined tools added to CD Tray's Tools menu.

Credits

Written by Richard Rakes, JenJen Software

Thanks to...

My wife and daughter for putting up with my late
night espresso programming.

Borland, for creating great Pascal products.

Microsoft, for Windows

Led Zeppelin, The Grateful Dead, Pink Floyd,
The Rolling Stones, The Beatles Jimmy Buffet,
Peter Gabriel, Pearl Jam, The Red Hot Chili
Peppers plus so many more for the inspiration.



Driver Setup for CD ROM Audio in Windows

Three drivers must be installed for proper operation of Compact Disk Audio in Windows (CD ROM Audio Support).

They are:

1. The CD ROM manufacturer's CDROM device driver
2. Microsoft's MSCDEX.EXE (CD ROM Redbook extensions)
3. Windows 3.1 MCICDA.DRV.

The manufacturer's driver interfaces directly to the CDROM device. It in turn interfaces with MSCDEX.EXE. MSCDEX.EXE, in turn, interfaces with MCICDA.DRV.

CD Tray interfaces with the MCICDA.DRV driver using the MMSYSTEM Dynamic Link Library (DLL) that is distributed with Windows 3.1 or as a supplement to Windows 3.0. If you use Windows 3.0, contact Microsoft on how to get the necessary files.

All three drivers must be installed to play audio compact disks. Consult your CD ROM drive documentation on setting up the first two drivers. When the Windows 3.1 setup program is run, it checks for the presence of MSCDEX.EXE. If it is found, it will create an entry for MCICDA.DRV in your SYSTEM.INI file. However, it will NOT install the driver! This must be done by the user after the installation is completed, CD Tray will notify you if MCICDA.DRV is not entered in SYSTEM.INI.

To install the MCICDA.DRV driver for Windows 3.1, follow these steps...

1. Run the Windows Control Panel and select the Drivers icon.
2. Press the ADD Button.
3. Select the "[MCI] CD Audio" entry and click OK.
4. Insert the Windows Distribution Disk, if asked for and follow the instructions.
5. Restart windows. You should now be able to Run CD Tray to play audio compact disks..

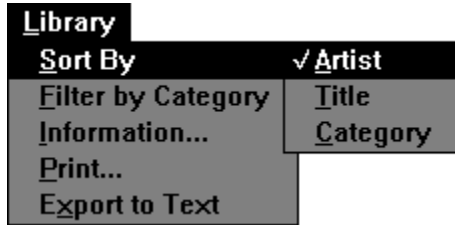
If after the above steps you are still not getting the MCICDA.DRV to run, follow these instructions:

1. Edit the SYSTEM.INI file found in the Windows default directory.
2. Find the [MCI] section.
3. There should be a "CDAudio=mcicda.drv" entry. If not, add it.
4. Save SYSTEM.INI and exit the editor.
5. Do a directory listing on your <windows>\SYSTEM directory.
6. Is MCICDA.DRV present? If not:
 1. Search the Windows 3.1 distribution disks for the file "MCICDA.DR_".
 2. Use EXPAND.EXE to expand the file to <windows>\SYSTEM.
 3. Restart windows.

Disclaimer

JenJen Software hereby disclaims all warranties relating to CD Tray, whether it is expressed or implied, including and without limitation to any implied warranties of merchantability or fitness for a particular purpose. JenJen Software cannot and will not be liable for any special, incidental, consequential, indirect or similar damages due to the loss of data or any other reason through the use of CD Tray, even if JenJen Software or an authorized agent has been advised of the possibility of such damages. Further, in no event shall the liability for any damages ever exceed the price paid for the license to use CD Tray, regardless of the form and/or extent of the claim. The user of CD Tray bears all risk as to the quality and performance of the software.

Library Menu



Click the menu item for a description of that item.

Reveals another popup menu in from which the sort order for the Disks Window can be chosen. The current sort order will be checked.

Select this to sort the Disks Window by the Artist field.

Select this to sort the Disks Window by the Title field.

Select this to sort the Disks Window by the Category field.

Export to Text

This selection will dump all records in the Disk Library to an ASCII text file. This file can be used in any number of ways.

A File Open dialog will be displayed. Enter the filename for the dump file, click Ok and the Disk Library will be dumped to the text file.

This file can then be reformatted if necessary and read into other applications. Alternately, bring the file into NotePad or a similiar word processing program and cut and paste into other applications.

Bug Reporting

As programming goes, testing software can be boring. However, it is a very necessary step in the creation of software. CD Tray has been tested thoroughly, however problems can occur.

If you have noticed a problem or bug with CD Tray, **PLEASE** contact [JenJen Software](#) describing the problem and how it might be duplicated.

Suggestions are welcome also!

Please recognize that this program has a few limitations due to several factors. One big factor limiting the program, is the use of Windows timers. This is especially true in program mode. CD Tray could be improved in this area and probably will be in a future version. If during program mode, skipping to the next track becomes unsynchronized or late, be aware that this is primarily due to Windows handling of timer messages. This can be minimized by keeping Windows activity to a minimum during CD Tray program mode operation.

Help Menu

From the Help menu you can receive help on using all of the features of CD Tray. For finding a topic, select the Index menu item. For information on a main topic, select one of the topics listed.

For information on using the Windows Help System, select Help on Help.

Note that CD Tray's menu is context sensitive in a general sense. If, for example, you are about to make a selection from the Tools menu you may press F1 to invoke the help system. The topic displayed will be about the Tools menu.

A track program is a list of tracks to be played by CD Tray that have been selected using the Track Programming tool in the Tools menu.

A track program can be saved, after programming is completed using the Save Program menu item in the Disk menu. The track program can be recalled by selecting Load Program menu item also in the Disk menu.

That's Me!!!

Registration Information

CD Tray is the sole property of JenJen Software. The shareware version may be freely copied and transferred to individual parties for evaluation purposes. It may be posted on Bulletin Board systems (BBS) for electronic access as long as NO FEE is charged for its distribution except for private BBS operations that charge a regular user subscription fee.

CD Tray is a Shareware product. Shareware is a computer program distribution/marketing method that permits potential buyers to try the program prior to purchase. It is NOT free and it is NOT in the Public Domain. You are given the right to use this program for a period of not more than 2 weeks. If, after evaluating the program, you find it to be useful enough to use it on a regular basis, you are expected to pay for it by registering with JenJen Software.

The registration fee is \$29.00, plus \$3 for shipping and handling.

Please be advised that credit cards cannot be accepted. Checks/cash/money orders ONLY, please!

With registration you will receive:

- The **fully functional** version of the LATEST CD Tray program and help files on your choice of disk format (5.25 or 3.5 disks).
- Unlimited Technical Support.
- Free or minimal cost upgrades for major program revisions.

You may register CD Tray in the following way:

- 1) By mail with check, cash or money order to:

JenJen Software
7 Kettering Lane
Hampton, Va 23666

Note: You may print an order form from CD Tray if desired or use the enclosed order form in the file ORDER.TXT.

After receipt of registration payment, Technical Support will be provided through two means:

- 1) By mail at the above address.
- 2) Electronically through CompuServe: ID# 73700,3137

Note: Please include your phone number in case a phone call is required.

Technical Support is unlimited to registered users. Technical Support is supplied to unregistered users only if the problem affects the ability to reasonably evaluate the software.

One of the great strengths of the Shareware concept is the interaction between the program author and the users. If you have a problem, questions or any suggestions for improvement, please contact JenJen Software.

Thanks for supporting Shareware authors! :)

Disk	Artist	Title
1		
2		
3		
4		
5		

Richard Rakes
JenJen Software

CD Tray Order Form

Choose from the Windows Help menu, File; Print Topic to print this order form.

Name.....

Address.....

City, State
& Zip Code...

Phone.....(

)

-

Compuserve ID#

Disk Format
Desired

5.25

[

]

3.5

[

]

Payment Method...

Cash

[

]

Check

[

]

Money Order

[]

CD Tray for Windows..... \$ 29.00

Number of copies..... X []

SubTotal..... \$ []

plus Shipping & Handling..\$ 3.00

Total Amount..... \$ []

Mail To :

JenJen Software
7 Kettering Lane
Hampton, Va 23666

Comments, Questions, Criticisms? _____

Thank You for supporting Shareware!!



[Click here for more information.](#)



[Click here for more information.](#)

This version is limited to a dozen compact disks.

Version Information

➔ Version 1.0 - released 01/19/93

➔ Version 1.1 - 01/28/93
(Maintenance Release)

- Fixed repaint problems mainly with the digital displays.
- Fixed repaint of the Songs Window when entering program mode.
- Closes FFwd/Rew tool when choosing the Program Tracks dialog. This tool cannot be present when in program mode and previously it would be left open and cause programming to not work correctly.
- Closes FFwd/Rew tool if disk is ejected.



Disk	Artist	Title
1		
2		
3		
4		
5		

when

the CD Library is Closed.

The Help menu is no longer disabled



Disk	Artist	Title
1		
2		
3		
4		
5		

tools

menu items when the CD Library is re-opened.

No longer duplicates the user-defined

