

**EXPERT**  
SOFTWARE

Kids!  
Fonts



Online User's Guide



# Kids' Fonts

re its

---

**Product Manager:** Susan Azpurua

**Quality Assurance:** George Moneo, Patty Fuquen, Randy Abdool, Rick Haylock, Manny Perez, Sean Pereira

**Documentation Layout:** Rebecca A. Ergen

**Documentation Editor:** Mia Leonin

**Development Art Department:** Greg Lampkin, Omar Rodriguez Jr., Glen Milan, Enrique Saldarriaga, Noel Fung

**Online Manual Edition:** August 1996

***Special Thanks:*** Marwan Tabet

# Copyrights and Trademarks

---

©1996 Expert Software, Inc. All Rights Reserved. Design and documentation ©1996 Expert Software, Inc. Program Development. The user's guide and the software described in it are copyrighted with all rights reserved. The user's guide or software may not be copied in whole or part, without written consent of Expert Software, Inc. You may not sell, rent, lease or transfer copies of the user's guide or software in any other way without the prior consent of Expert Software, Inc.

Digital font outline data licensed from Weatherly Systems, Inc. Copyright © 1996. All Rights Reserved Worldwide.

Expert Software, Inc., Kids' Fonts and the Expert Brand logo are Trademarks of Expert Software, Inc. Microsoft is a trademark of Microsoft Corp. All rights reserved. All other trademarks are acknowledged.

This chapter provides a brief overview of *Kids' Fonts* and identifies the main components of the program.



## Program Overview

### Welcome to Expert's *Kids' Fonts*!

---



Presentation is everything. With *Kids' Fonts*, your documents will look as unique and professional **as you like**. Use in all of your documents. Utilize the technology of your computer, yet keep the personal touch of handwritten cards, letters, memos, and thank you cards. Combine *Kids' Fonts* with other Expert programs like Labels, Great Presentations, and Personal Presentations to rejuvenate all of your correspondences, mailings and presentations. And of course, you can use *Kids' Fonts* with your favorite word processing and desktop publishing programs.

This manual is designed for the person who doesn't have a lot of time and is ready to jump right in. Read the overview and definitions below.

## Terms and Definitions

---

**Click** Press and release the mouse button (usually the left mouse button unless otherwise specified).

**Double Click** Quickly press and release the mouse button twice.

**Choose** Highlight an item on the menu or dialog box to initiate an action or command, then press the Enter key or double-click your left mouse button.

**Enter** Press the Enter or Return key.

**Select** To mark or choose an item so that the next action or command will be carried out on that item, highlight an option or choice from the menu or design document by clicking on it.

**Quit** Click on the **Quit** button to exit from the **Font Browser**.



## Special Features

---

*Kids' Fonts* is easy to use in Windows® 95, Windows® 3.1, and Macintosh®.

These fonts have been created by Expert's team of program developers. They possess the following features:

**Font Browser:** With so many fonts, finding the right one couldn't be easier. Just click on a category you are interested in and view. Each *Kids' Fonts* contains several different fonts.

**Expert Font Installer:** The easy-to-use installer allows you to install a font with the click of a button. If you forget what the font looks like, simply launch the **Font Browser**.

# The Interface

This is the main interface for browsing through the fonts:



1. **Available Fonts** These buttons display all of the font categories available within the program.
2. **Font Representations** Displays the names of the selected category of fonts.
3. **Scroll buttons** Click on this button to view the previous or the next screen.
4. **Credits button** This button lets you view the program's Credits and Trademark information.
5. **Quit button** Click on this button to exit the program.

*Note: the **Quit** button automatically exits you from the program.*

**You're invited!**

**THINKING OF YOU...**

**THANK  
YOU**

**Happy Anniversary**

Read this chapter for lessons on how to browse through, select and install the *Kids' Fonts* you like.

# Tutorial

## Font Browser

The **Font Browser** lets you view the font styles before you load them into your system.







To see the fonts in a specific category, simply click on the name of the font category tab at the top of the screen. Each font contained within the selected category appears in alphabetical order. To scroll through the fonts, click on the **Up Arrow** to view the previous screen or the **Down Arrow** to view the next screen. Click on the **Quit** button to exit from the **Font Browser** and return to the **Fonts Installer**.



## Font Types

There are twelve categories of *Kids' Fonts*:

**Alien**

**Around the World**

**Creepy**

**Fantasy**

**Rave**

**Back to School**

**Sugar & Spice**

**Superhero**

**Topsy Turvy**

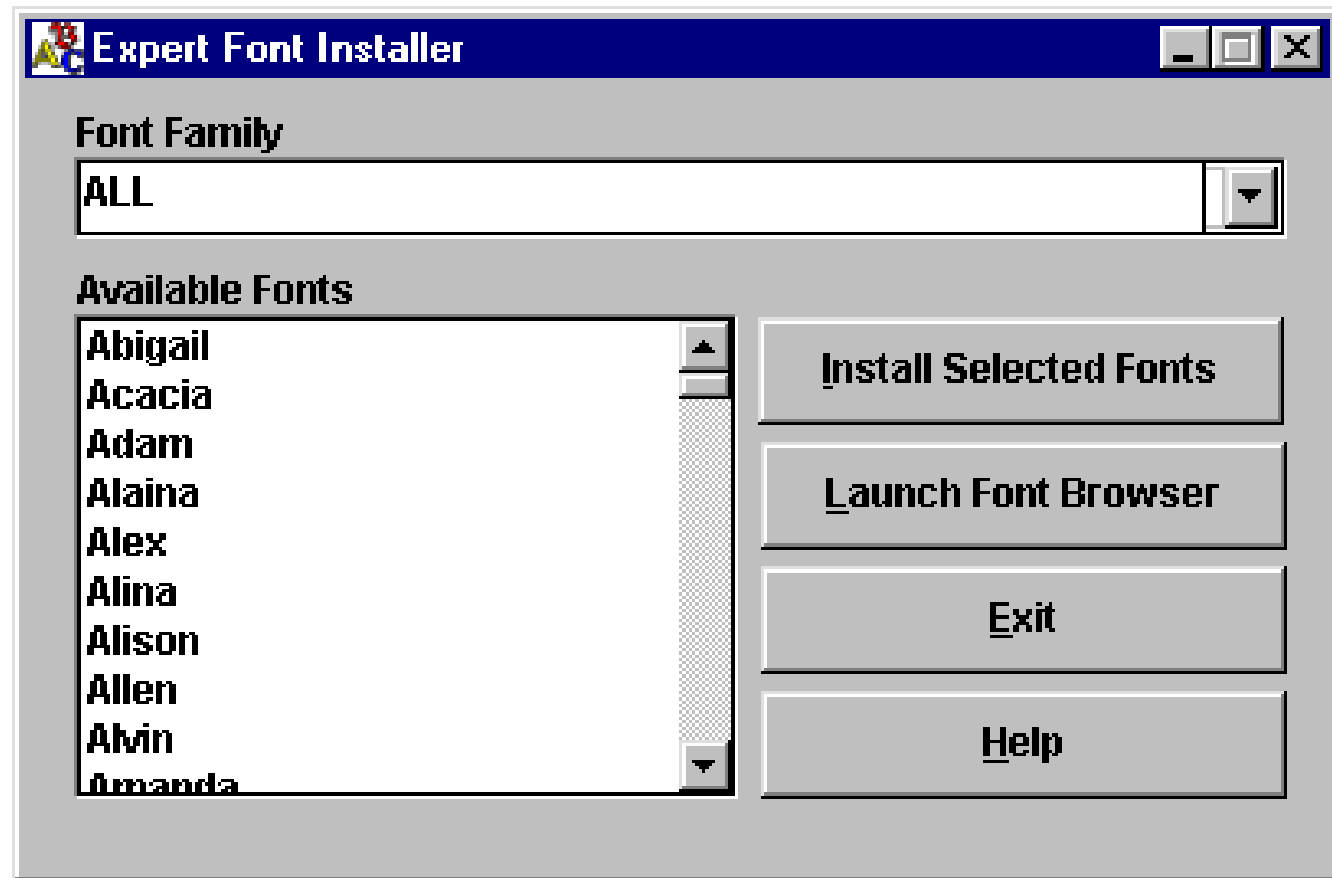
**Toy**

**Wacky**

**Funky**

# Installing Fonts

*Kids' Fonts* includes an easy-to-use font installer. It is strongly recommended that you do NOT install more than 20 fonts at once.





To install the fonts you have selected from the font browser:

1. Click on the drop-down list box and select a **Font Family**. All the fonts available for that font category are then displayed on the main interface screen.
2. Select the font you want to install and click on the **Install Selected Font** button.

Install Selected Fonts

To make multiple font selections, press the **CTRL** key while you click on the fonts you want to select. To see an example of the font, click on the **Launch Font Browser** button.

Launch Font Browser

It is recommended that you do NOT have more than 20 fonts installed on your system at one time. Follow the *Removing Fonts* directions for more information on removing fonts. See below for instructions on Removing Fonts.

**Note** to Windows 95 users: after you have installed the fonts, click on the **Fonts** icon in Control Panel to update the fonts folder. This should make all fonts visible in the application.

## Removing Fonts

---

A typical TrueType font family requires about 5 kilobytes of Random Access Memory for installation. If you run Windows on a 386 or higher and have a normal-sized swap file, you should be able to load many, many fonts without experiencing a major performance penalty.

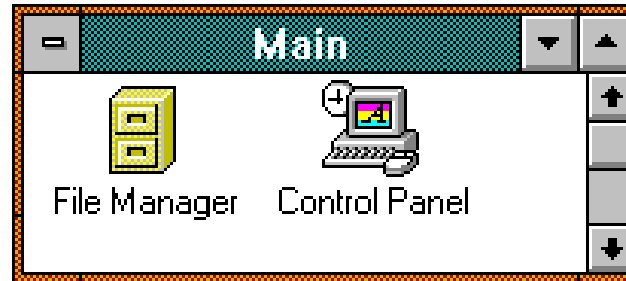
There is a problem, though. Many applications allocate a relatively small amount of memory to hold the names of the fonts. For example, a well-known bug in a major word processor has been affectionately called “the pfont pfunnies.” When you use more than 255 different fonts in your open document(s), the program completely loses track and substitutes one font for another... for another... for another, and so on.

For system memory considerations and for applications compatibility, sometimes it's best not to install too many fonts. If you need to remove a font or fonts, read the following. [Click here if you are a Windows 95 user.](#)

## Windows 3.1 Users

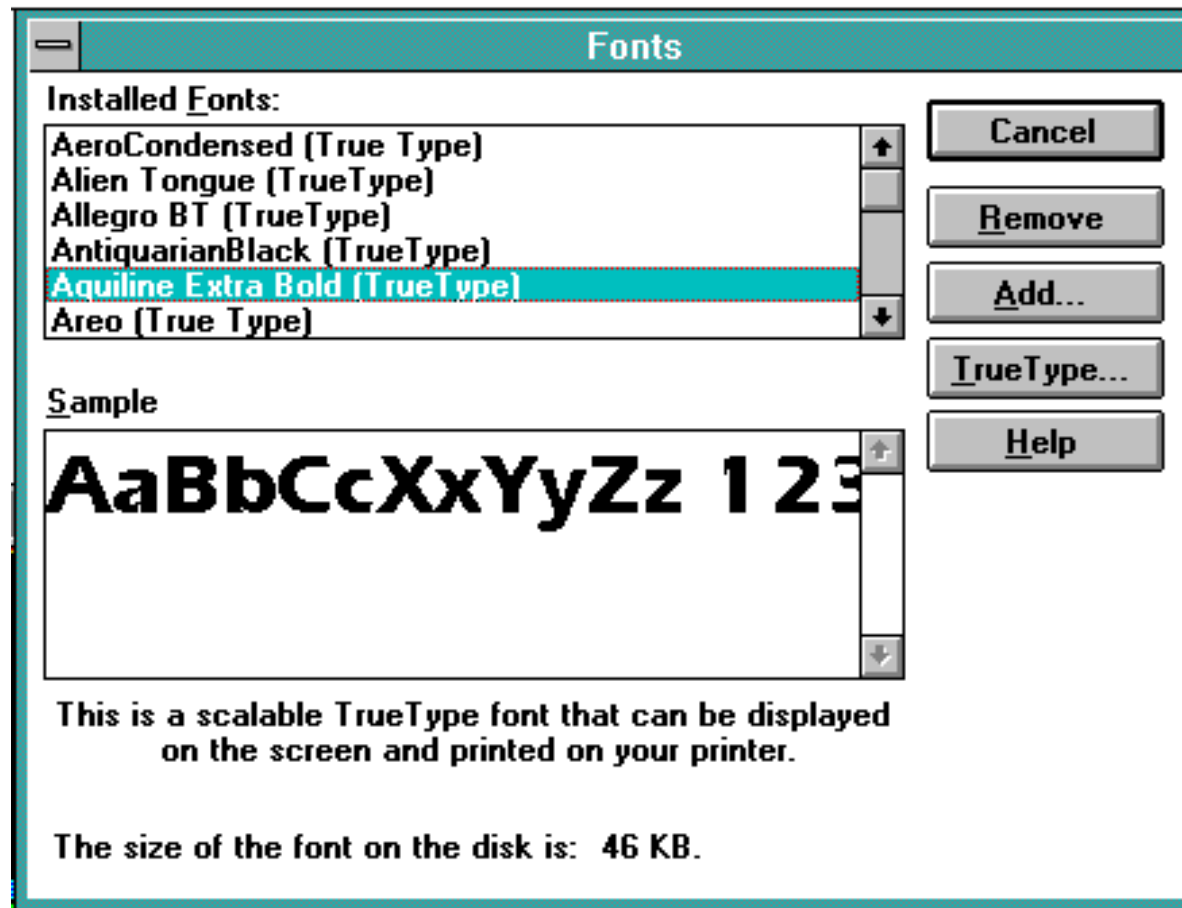
The **Fonts** dialog box allows you to manage the number of fonts installed on your computer and to remove fonts you no longer wish to use. **Please note:** *do not delete the default Windows fonts.*

1. Double-click on the **Control Panel** icon located in your **Main** program group.



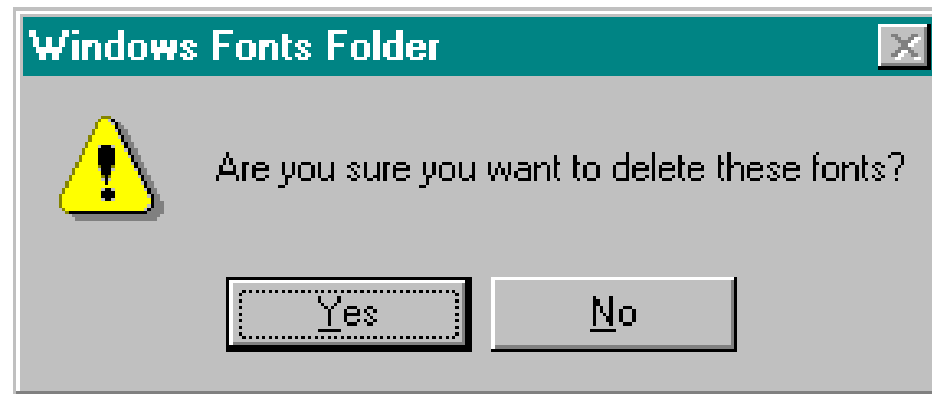
2. Double-click on the **Fonts** icon.

3. The **Fonts** dialog box appears. This dialog box lists all currently installed font files.



4. Highlight the fonts to be deleted. Press the **CTRL** key on your keyboard to select more than one font to be deleted. All selected fonts are highlighted. Click on the **Remove** button.

5. The **Windows Fonts Folder** dialog box appears. Click on the **Yes** button to confirm the removal of the selected font.



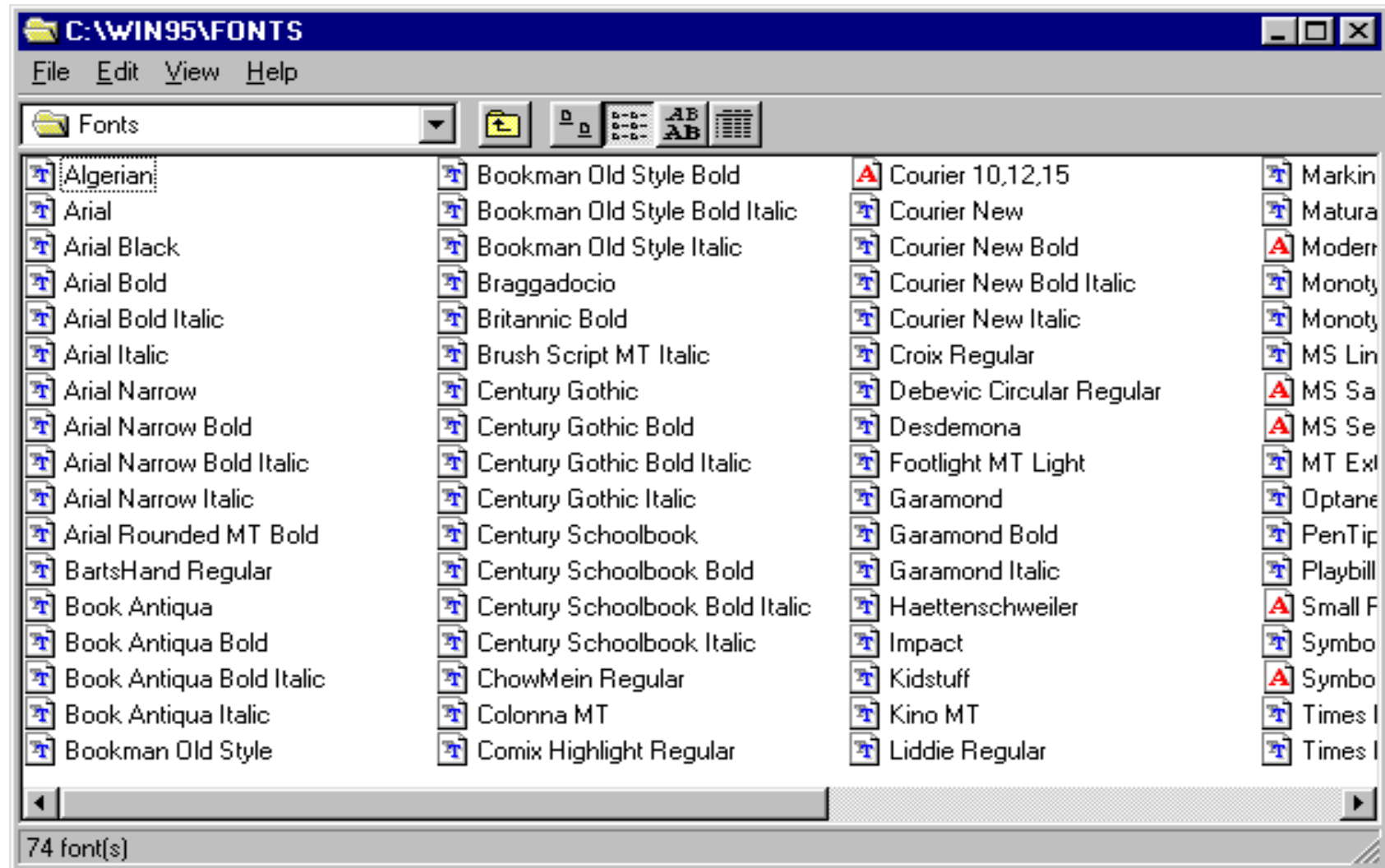
6. The **Remove Font** dialog box appears next. Click on the **Yes to All** button to confirm the removal of all selected fonts. Check the **Delete Font File from Disk** option to remove the font from the hard drive.



## Windows 95 Users

The **Fonts** dialog box allows you to manage the number of fonts installed on your computer and to remove fonts you no longer wish to use. **Please note:** do not delete the default Windows fonts.

1. On the Taskbar, click on the **Start** button.
2. Point to the **Settings** folder and point to and click on the **Control Panels** icon.  **Control Panel**
3. In the **Control Panel** window, double-click on the **Fonts Folder** icon. The Fonts window appears. This window lists all currently installed font files.



4. Select the font (or fonts) to be removed from your system. Choose **File—Delete**.
5. In the confirmation dialog box, click on the **Yes** button. The selected font(s) are removed from your system.





This chapter answers the most frequently asked questions from users of Expert's font series.



## Frequently Asked Questions

### Q/A



**Q: Microsoft Works for Windows won't display all of my fonts. Why?**

*A: MS Works allocates only 10 kilobytes of RAM for remembering the names of all the fonts installed in the system. If you have many, many fonts, ALL the font names disappear from the font list. The only advice Microsoft offers to users with this problem is to delete the fonts you don't use or copy the fonts to disk and use them only when you need them.*



**Q: None of the fonts appear in any of my applications. How can I fix this?**

*A: Most likely the True Type option is turned off. To check, open the **Control Panel**, choose the **Fonts** icon, and select the **True Type** button. Be sure there is a check in the '**Enable True Type Fonts**' box. If not, click on the blank square and click on **OK**. You are then prompted to restart Windows for the changes to take effect.*



**Q: Why do all of the fonts look the same?**

*A: Windows normally won't tell you when too many fonts are being loaded at start-up. However, when loading an excessive amount of fonts from various resources, some fonts might begin to show as the same generic font. When this happens, you have exceeded the amount of fonts (literally hundreds) that your computer can handle. Delete the fonts you don't use, or store them on disk and use them only when needed.*



**Q: I have installed the TrueType fonts in Windows 95 and cannot find them in my word processor.**

*A: After you have installed the fonts, click on the **Fonts** icon in **Control Panel** to update the fonts folder. This should make all fonts visible in the application.*



**Q: I'm having problems with WordPerfect for Windows since I installed fonts.**

*A: WordPerfect offers you a choice of two completely different print drivers. The default is the WordPerfect driver. The WordPerfect driver uses only WP fonts -- not TrueType fonts. To use TrueType fonts with WordPerfect for Windows, you must use the Windows Print driver as configured in the **Control Panel** under **Printers**.*



The following is a list of the available fonts.

## Available Fonts

The following is the list of 300 True Type fonts, for both PC and MAC platforms, which will be included in the Expert Kid Fonts CD product. Any changes to this list will be mutually agreed upon by Expert and the Licensor.

5thGrader	Bedrock Regular	ChubbyOutline Italic	DingbatsTwo Regular
5thGrader Bold	BedrockWide Italic	Coaster Italic	DinnerTime Regular
5thGrader Bold Italic	BedrockWide Regular	Coaster Regular	DoorJamb Regular
5thGrader Italic	Beetlejuice Italic	CoasterNarrow Italic	EdenDisplay
Aladdin Italic	Beetlejuice Regular	CoasterNarrow Regular	EdenDisplay Italic
Aladdin Regular	Biggen	Comix Italic	FairyScrollDisplay
AladdinExpanded Italic	BobbyPin Regular	Comix Regular	FairyScrollDisplay Italic
AladdinExpanded Regular	Borderbats-Geo Regular	ComixHeavy Italic	Fernando Regular
Anaconda Regular	Braille Regular	ComixHeavy Regular	Fingerpaint
AnacondaCondensed	Candystriper	ComixHighlight Italic	Fingerpaint Bold
Regular	Candystriper Italic	ComixHighlight Regular	Fingerpaint Bold Italic
AnacondaExpanded Regular	Carnivale	Cow-Spots Italic	Fingerpaint Italic
ArcheryDisplay	CasqueOpenFaceWacky	Cow-Spots Regular	FirstGrader Italic
ArcheryDisplay Bold	CasqueOpenFaceWacky Bold	CrewCutCaps	FirstGrader Regular
Aristocrat Regular	ChowMein Regular	CrewCutCaps Bold	FlamingDisplayCaps
Arruba	ChowMeinNarrow Regular	CrewCutCaps Bold Italic	FlamingDisplayCaps Italic
Baratz	ChowMeinWide Regular	CrewCutCaps Italic	FlamingDisplayCapsHvy
Baratz Bold	Christmas Tree Regular	Cut-n-Paste Regular	FlamingDisplayCapsHvy Italic
Baratz Bold Italic	Chubby	Digiface Italic	FractionsRoman
Baratz Italic	Chubby Italic	Digiface Regular	FractionsSans
BarberPole Regular	ChubbyOutline	DigifaceWide Italic	Frantic Italic
BarberPoleItalic Italic	ChubbyOutline Bold	DigifaceWide Regular	Frantic Regular
Bedrock Italic	ChubbyOutline Bold Italic	DingbatsOne Regular	Frilly

Frilly Italic  
FrillyExtras  
FrillyExtras Italic  
FunkyFace Regular  
FunkyFaceUpright Italic  
FunkyFaceUpright Regular  
Funstuff Bold  
Funstuff Bold Italic  
Funstuff Italic  
Funstuff Regular  
FunstuffXitalic Bold  
FunstuffXitalic Regular  
FuturistStencil Italic  
FuturistStencil Regular  
Gaelic Italic  
Gaelic Regular  
GaelicCondensed Italic  
GaelicCondensed Regular  
GanglyDisplayCaps  
GanglyDisplayCaps Bold  
GardenDisplayCaps  
Gecko Italic  
Gecko Regular  
GeckoVertical Regular  
GhoulyCaps Regular  
GhoulySolid Regular  
Grafitti  
Grafitti Bold  
Grafitti Bold Italic  
Grafitti Italic  
GremlinCaps  
GremlinCaps Bold  
GremlinCaps Bold Italic

GremlinCaps Italic  
GremlinOutline  
Grouse  
Grouse Italic  
GrunionScript  
GrunionScript Bold  
GrunionScript Bold Italic  
GrunionScript Italic  
GummyDisplay  
GummyDisplay Italic  
Gymnastics Regular  
HandStroke Italic  
HandStroke Regular  
HankyShadow  
HankyShadow Italic  
Harquil Italic  
Harquil Regular  
HighNoon Italic  
HighNoon Regular  
HippieDisplay  
IvyDisplayCaps  
IvyDisplayCaps Bold  
IvyDisplayCaps Bold Italic  
IvyDisplayCaps Italic  
Japanese  
Jellybean  
Jellybean Italic  
Jolt Italic  
Jolt Regular  
Jurassic Regular  
Keycaps Regular  
KingTut Regular  
KingTut-Too Regular

KoolKapsDisplay  
KoolKapsDisplay Bold  
KoolKapsDisplay Bold Italic  
KoolKapsDisplay Italic  
KoolKapsDisplayHvy  
KoolKapsDisplayHvy Bold  
KoolKapsDisplayHvy Bold  
Italic  
KoolKapsDisplayHvy Italic  
LadyBug Italic  
LadyBug Regular  
Lariat  
LariatLight  
Letterman Italic  
Letterman Regular  
LettermanSolid Italic  
LettermanSolid Regular  
MagnetiCard  
MagnetiCard Italic  
MagnetiCardWide  
MagnetiCardWide Italic  
Mandrel  
MandrelOutline  
MandrelOutline Bold  
Marquee Italic  
Marquee Regular  
MarqueeEngraved Italic  
MarqueeEngraved Regular  
MarqueeFlash Italic  
MarqueeFlashRegular  
MarqueeMieux Italic  
MarqueeMieux Regular  
Medfly Bold

Medfly Bold Italic  
Medfly Regular  
MedflyBlack Italic  
MedflyBlack Regular  
MedflyExtrabold Italic  
MedflyExtrabold Regular  
MedflyHeavy Italic  
MedflyHeavy Regular  
MedflyLight Italic  
MedflyLight Regular  
Mitzvah Regular  
Murdock  
Murdock Bold  
Murdock Bold Italic  
Murdock Italic  
Needlepoint Regular  
New Mexico Regular  
Nexus Italic  
Nexus Regular  
Notehand Bold  
Notehand Bold Italic  
Notehand Italic  
Notehand Regular  
NotehandLefty Bold  
NotehandLefty Regular  
Orient Regular  
OrientNarrow Regular  
OutHouseDisplayCaps  
OutHouseDisplayCaps Italic  
PageClips Italic  
PageClips Regular  
Painter Italic  
Painter Regular

PainterNarrow Italic  
PainterNarrow Regular  
Penstyle  
Penstyle Bold  
Perdoo  
Perdoo Bold  
Perdoo Bold Italic  
Perdoo Italic  
Pipefitter  
Pipefitter Bold  
Pipefitter Bold Italic  
Pipefitter Italic  
PixelPoint Regular  
Placard  
PlanksDisplayCaps  
PlanksDisplayCaps Bold  
PlanksDisplayCaps Bold Italic  
PlanksDisplayCaps Italic  
PlayingCards Regular  
PookyDisplay  
PookyDisplay Italic  
PookyDisplayBS  
Prawn Handwrite Regular  
Pyxid Regular  
PyxidQuick Regular  
QuarkNeon Italic  
QuarkNeon Regular  
Ribbons Regular  
Rodeo  
Rubiks  
Rubiks Italic  
SecondGrader Italic  
SecondGrader Regular

Shower  
Shower Bold  
Shower Bold Italic  
Shower Italic  
SnowtopCaps Regular  
Starburst  
Starburst Italic  
StarsCaps  
StarsCaps Italic  
StarsCapsHeavy  
StarsCapsHeavy Italic  
Stencil Regular  
Stinger Regular  
StingerShadow Regular  
StriperBoldCaps  
StriperBoldCaps Italic  
StriperCaps  
StriperCaps Italic  
Sunbelt  
Sunbelt Italic  
SundownDisplayCaps  
SundownDisplayWide  
SwissCheese Italic  
SwissCheese Regular  
TokyoCaps  
TokyoCaps Italic  
Trains Regular  
TravellerScript  
TypewriterRough  
TypewriterRough Italic  
Urkle  
Urkle Italic  
VinylCaps

VinylCaps Italic  
VinylCapsHeavy  
VinylCapsHeavy Italic  
WeirdoWarp Regular  
WildWest Regular  
Wizzard  
Wobbles  
Wobbles Italic  
WolfgangCaps  
WolfgangCaps Bold  
WolfgangCaps Bold Italic  
WolfgangCaps Italic

# Registration and Online Catalog

## Registration

---

By registering, Expert Software, Inc. can keep you informed of the latest changes and improvements to this product, as well as information on our other products. Sending in your registration card also allows you to receive free product support.

In order to register this product, either fax via modem or print the registration form.

*Note: If you did not register during installation, you need to re-install the program in order to redisplay the Expert Software Registration Card.*

*To fax your product registration using the modem:*

- 1. Fill out the appropriate information in each field.*
- 2. Click on the COM Port section field to display a list of available ports.*
- 3. Select the appropriate Port for your computer.*
- 4. Click on the Fax Card button to transmit the information.*

*TIP: if you don't know what Port your fax,modem is connected to, try a different COM Port number.*

If you prefer, you can print the registration card and print it by clicking on the **Print Card** button. Fax the printed form to: (305) 569-1360. Or mail it to:

**Mail to:**            **Expert Software, Inc.**  
                         **P.O. Box 144506**  
                         **Coral Gables, FL 33114-9796**

**Fax it to:**         **(305) 569-1350**

# Starting the Online Catalog

---

When you register the program, the Online Catalog will be installed. To access the Online Catalog which allows you to preview other exciting Expert products:

## Windows® 95 users

Insert the Expert CD into your CD-ROM drive. On the Taskbar, click on the **Start** button, point to the Programs folder and the Expert Software folder and finally, point to and click on **Online Catalog**.

## Windows® 3.1 users

Insert the Expert CD into your CD-ROM drive. Locate the Expert Software group and click on Online Catalog icon.

## **Expert Software License Statement**

This software is protected by both United States Copyright Law and International Treaty provisions. Expert Software, Inc. grants you this license and your continued use confirms your agreement. Therefore, you must treat the software “just like a book,” with the following single exception: Expert Software, Inc. authorizes you to make archival copies of the software for the sole purpose of backing up your software and protecting your investment from loss.

By saying “just like a book,” Expert Software, Inc. means, for example, that the software may be used by any number of people and may be freely moved from one computer to another, so long as there is no possibility of being used at one location while it’s being used in another. This is just like a book that cannot be read by two different people in two different places at the same time; neither can this software be used by two different people in two different places at the same time.

This agreement shall be construed, interpreted, and governed by the laws of the state of Florida and shall inure to the benefit of Expert Software, Inc. its successors, administrators, heirs, and assigns.

### Limited Warranty

Limited warranty on product disks. To the original buyer only, Expert Software, Inc. warrants the disk or disks on which this product is recorded to be free of defects in material and workmanship under normal use for a period of 90 days from the purchase date. Any implied warranties of merchantability or fitness for a particular purpose are limited in duration to the period of 90 days from the date of purchase. Your sole and exclusive remedy in the event of a defect in material or workmanship under normal use is expressly limited to replacement of the defective item.

This warranty gives you specific legal rights, and you might also have other rights which vary from state to state.

No warranty on product software or User’s Guide. Even though Expert Software, Inc. has tested the software and User’s Guide and reviewed their contents, Expert Software, Inc. and its distributors and dealers make no warranties, either expressed or implied, with respect to the fitness for a particular purpose. The software and User’s Guide are distributed solely on an as is basis. The entire risk as to their quality and performance is with you. Should either the software or User’s Guide or both prove defective, you (and not Expert Software, Inc. and its distributors and dealers) assume the entire cost of all necessary servicing, repair, or correction. Expert Software, Inc. and its distributors and dealer will not be liable for direct, indirect, incidental, or consequential damages resulting from any defects in the software or User’s Guide, even if they have been advised of the possibility of such damages.

Some states do not allow limitations on how long an implied warranty lasts or the exclusion or limitation of incidental or consequential damages, so the above limitations or exclusions might not apply to you.

### Copyright

© 1996 Expert Software, Inc. All Rights Reserved. All Rights Reserved Worldwide. The user’s guide and the software described in it are copyrighted with all rights reserved. The user’s guide or software may not be copied in whole or part, without written consent of Expert Software, Inc. You may not sell, rent, lease or transfer copies of the user’s guide or software in any other way without the prior written consent of Expert Software, Inc.

### Trademarks

Expert Software and the Expert brand logo are trademarks of Expert Software, Inc. Microsoft and Windows are registered trademarks of *Kids’ Fonts*



# Product Support

Your purchase of an Expert product includes free product support to help you get the most out of your software. All Expert products are thoroughly tested and come with a Help File, User's Guide and/or Online Manual. In most cases, the answers to many of your questions are in the Help File, User's Guide and/or Online Manual. If you are having problems starting or running the program, please feel free to contact us.

## 24 Hour Automated Support

Find answers to frequently asked questions on the worldwide web at <http://www.expertsoftware.com>

Use our Fax Back System for support and product information at (800) 772-5706.


## E-mail Addresses

You can send e-mail to [support@expertsoftware.com](mailto:support@expertsoftware.com) or [sales@expertsoftware.com](mailto:sales@expertsoftware.com)

## Mailing Address

800 Douglas Road, Suite 750, Coral Gables, FL 33134 or P.O. Box 144506, Coral Gables, FL 33114-4506.

## Telephone Product Support

 Contact a friendly Expert Product Support Specialist Monday through Friday, 9:00AM to 5:00PM EST, (Eastern Standard Time).

Telephone (305) 567-9996

Fax (305) 569-1350.

**If you call**, you should be at your computer. Be ready to give the Product Support Specialist the 10-digit program version number from the front of your program disk or back of the CD jewel case, as well as the following information:

If you have a Macintosh®-compatible computer:

Please have the model, system software version and amount of memory available.

If you have a Windows®- or MS-DOS®-compatible computer:

The version of DOS that is installed on your computer. (You can determine the version by typing VER at the DOS prompt.)

The version of Windows® installed on your computer.

The type of hardware you are using:

The brand of computer you own,

CPU type (80386, 80486, Pentium®),

Video type (EGA, VGA, Super VGA),

Model and type of video card, and

Model and type of printer.

The exact wording of any messages that appeared on the screen.

What happened and what you were doing when the problem occurred.

We encourage Windows® 3.x (or MS-DOS 6.x) users who need product support to print an MSD report. Have it available for the Product Support Specialist who answers your call. You will find the MSD (Microsoft Diagnostics) program in either the Windows or the DOS directory.