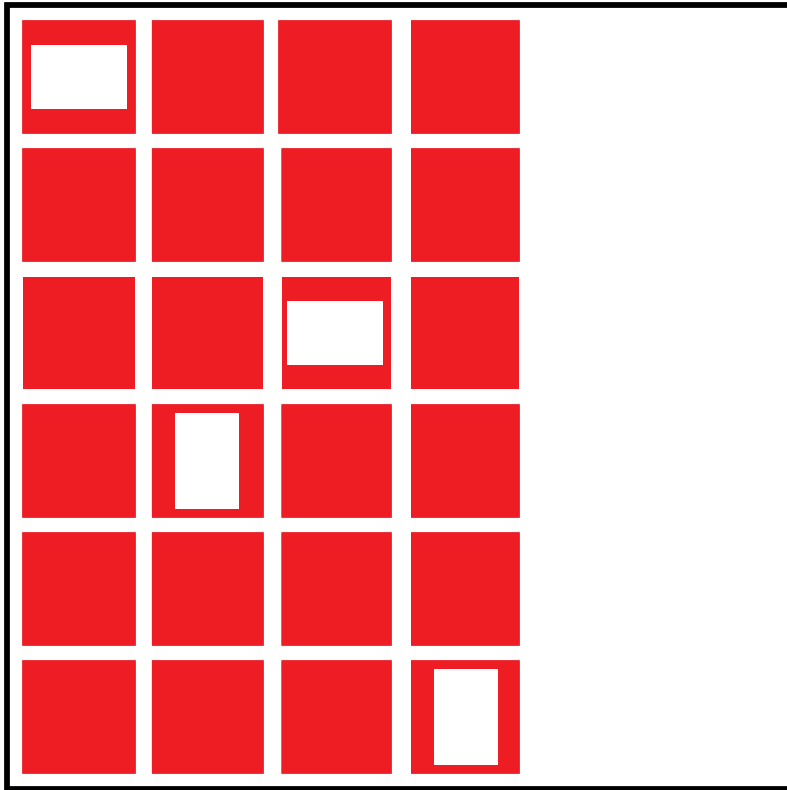


1: Getting Started



1: Getting Started

This chapter contains system requirements information, installation instructions, and a general overview of the Arrange-It software windows, menus, and toolbar.

System and Software Requirements

The following sections detail the recommended system configuration and software requirements.

System Hardware

To use Arrange-It software, you require an IBM PC or compatible with at least a 25 MHz 80386 processor and a mouse.

Memory and Disk Space

Arrange-It software requires a minimum of 8 megabytes of RAM and at least 40 megabytes of free hard disk space. For optimum performance, it is recommended that you have at least 16 megabytes of RAM and 60 megabytes of free hard disk space.

Display

Arrange-It software works with most display adapters supported by WINDOWS software. It is recommended that you use a 24-bit color display adapter and compatible monitor (for example, a SuperVGA monitor). As a minimum requirement, you should have a 256-color display adapter.

CD-ROM Drive

To access images stored on Photo CD Master discs or Photo CD Catalog discs, you need a CD-ROM XA Mode 2, Form 1 drive. CD-ROM drives displaying the Photo CD symbol (shown on the cover of this book) indicate that Kodak has certified the drive as capable of reading Photo CD discs.

Refer to “Software Support” on the Information Card for a telephone number that you can call to obtain information on Photo CD-compatible CD-ROM drives.

1: Getting Started

System Software

In addition to Arrange-It software, you require

- MICROSOFT WINDOWS 3.1 software, running in enhanced mode
- MS-DOS 5.0 software or later

Installing Arrange-It Software

This section contains an explanation of Arrange-It software files in their default directories. You may find this information useful when you

- Do a partial installation
- Need more disk space and are looking for things to discard
- Want to know more about Arrange-It software auxiliary files
- Reinstall all or part of Arrange-It software
- Encounter a problem installing Arrange-It software
- Just want to know all the details

Arrange-It software consists of the following main components:

- `ARRANGIT.EXE` is the software application file located in the `C:\ARRANGIT` directory after a default installation. Whenever you move the application, you should move it with its entire directory. Arrange-It software looks for its auxiliary files in this directory. If you do not move these files together, you may get some unexpected results with files you created earlier.
- `C:\ARRANGIT\SMPDATA` directory contains the files that you use in the tutorial. You may move this directory or delete it once you have finished the tutorial lessons.
- `C:\ARRANGIT\PLUGINS` directory is the default location of the plug-ins used to emulate various models of Photo CD players. This directory must remain a subdirectory of the directory containing the Arrange-It software application.

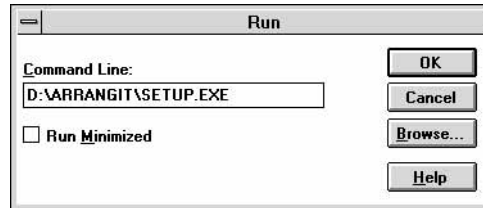
To install Arrange-It software on your hard disk, you need approximately 8 megabytes of free hard disk space.

If you have any virus detection software installed on your computer, you should disable it before you begin the Arrange-It software installation procedure.

To install the Arrange-It software from the Program Manager:

1. Insert the *KODAK Arrange-It Photo CD Portfolio Layout Software with Photo Sampler II* disc into the CD-ROM drive.
2. Choose Run from the File menu.
The Run dialog box appears.
3. Enter `D:\ARRANGIT\SETUP.EXE` in the Command Line text box, assuming the CD-ROM drive is the D drive.

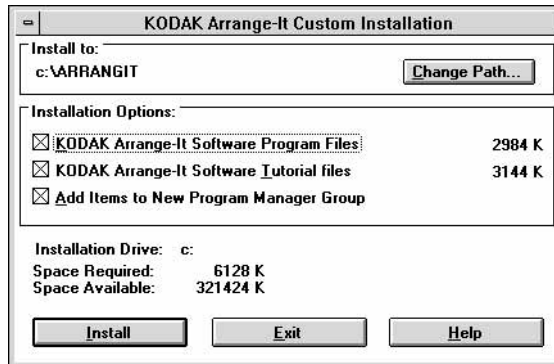
Run dialog box



4. Click OK

The KODAK Arrange-It Setup dialog box appears, followed by the KODAK Arrange-It Custom Installation dialog box.

KODAK Arrange-It Custom Installation dialog box



5. Click Change Path if you want to install to a different drive and directory than the default path. The default installation drive and directory are `C:\ARRANGIT`.
6. Click the appropriate check boxes in the Installation Options section of the Custom Installation dialog box. The default installation selects all three check boxes.

KODAK Arrange-It Software Program Files

KODAK Arrange-It Software Tutorial Files

Add Items to New Program Manager Group

1: Getting Started

You may not want to install the tutorial files if you already know how to use Arrange-It software and want to save disk space.

7. Click Install.

All the files install in the specified drive and directories. When installation is completed, the Setup Complete message box appears.

8. Click OK to return to the Program Manager.

Unless you deselected the Add Items to New Program Manager Group check box in the Kodak Arrange-It Custom Installation dialog box, the KODAK Arrange-It Program Group appears in the Program Manager. The Program Group contains the KODAK Arrange-It software icon and a Notepad file called README.TXT.

9. Double-click the README.TXT icon to see important information about changes made to Arrange-It software after this book was printed.

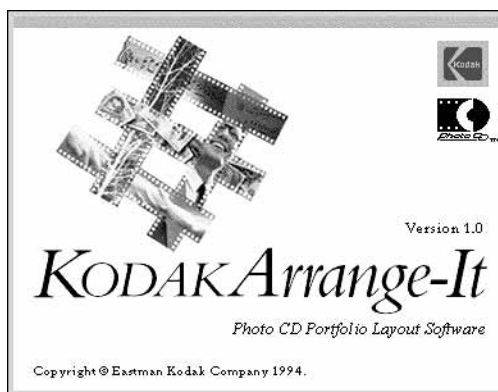
Starting Arrange-It Software

To start Arrange-It software:

1. Switch to the WINDOWS software Program Manager.
2. Double-click the KODAK Arrange-It Program Group.
3. Double-click the KODAK Arrange-It software icon in the Program Group.

The Arrange-It software welcome screen appears showing application copyright information.

Arrange-It software
welcome screen

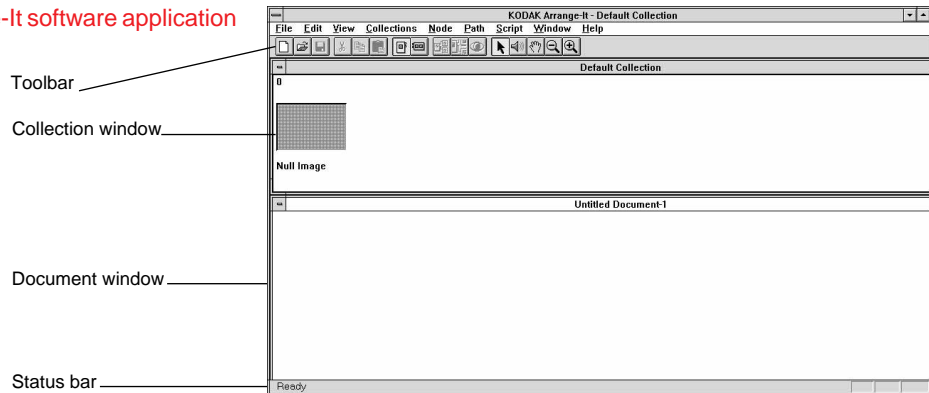


Immediately following the welcome screen, the Arrange-It software application window appears containing the Untitled Document-1 and Default Collection windows.

Using the Arrange-It Software Application Window

You use the Arrange-It software application window to create a presentation using Photo CD, TIFF, YCC TIFF, and bitmap (BMP) images, as well as audio (WAV) files. An Arrange-It software document lets you graphically outline your presentation.

Arrange-It software application window



The Arrange-It software application window contains the menu bar, toolbar, collection window, document window, and status bar.

- **Menu bar** contains nine Arrange-It software menus.
- **Toolbar** contains the tools that you use to build a presentation.
- **Collection window** displays a collection of images and audio files that can be used in a presentation. You can have multiple collection windows open in the application window. You can also close the collection windows and increase the size of the document window.
- **Document window** displays the work area where you construct your presentation.
- **Status bar** displays information about actions taking place in the application window and describes the currently active tool or menu item.

Arrange-It software supports only one open document (presentation) at a time. To open an existing document, choose Open from the File menu and select the document that you want to open. Arrange-It software automatically closes the current document and opens the file that you selected.

1: Getting Started

Arrange-It Software Menus

The Arrange-It software menu bar contains nine menus.

File Menu

The File menu provides the following commands:

- **New** creates a new document or collection.
- **Open** opens an existing document or collection.
- **Close** closes the current document or collection.
- **Save** saves the current document.
- **Save As** saves the current document or collection using a different name or location.
- **Revert** reverts to the last saved version of the current document.
- **Text Outliner** creates a document with the text outline language.
- **Import PLAYLIST.PCD** creates a document from a Photo CD Portfolio disc.
- **Recent File** lists up to four of the latest document files you have opened. You can select a filename from the list to quickly reopen it.
- **Exit** quits the Arrange-It software application.

Edit Menu

The Edit menu provides the following commands:

- **Undo** cancels the effects of the last action.
- **Cut** deletes the selected item from the document and puts it on the Clipboard.
- **Copy** puts a copy of the selected item on the Clipboard.
- **Paste** inserts the contents of the Clipboard into the document.
- **Clear** deletes the selected item from the document.
- **Select All** selects every item in the document.
- **Duplicate** makes a copy of the selected item.
- **Global Modify** lets you modify multiple values or settings in your document.
- **Preferences** lets you change the default values or settings of any new items that you create.

View Menu

The View menu provides the following commands:

- **Zoom Out** resizes and scales the contents of the document window, so that each item is smaller and a larger overview is displayed.
- **Zoom In** resizes and scales the contents of the document window so that each item is magnified and the details of a smaller part of the document can be viewed.
- **View All Nodes** zooms out, so that all items in the document can be viewed in the document window.
- **Restore View** returns the view size back to normal.
- **Columns** arranges items in columns according to the height of the collection window.
- **Rows** arranges items in rows according to the width of the collection window.
- **Better Color Quality** displays images using the best possible color match on systems with 256 colors or less, optimizing color quality at the expense of speed.
- **Better Speed** displays images faster, but at the expense of color accuracy.

Collections Menu

The Collections menu provides the following commands:

- **New** creates a new collection.
- **Open** opens an existing collection.
- **Remove** removes all items in the current collection from the document.
- **Edit** opens the Edit Collection dialog box for the selected collection.

Node Menu

The Node menu provides the following commands:

- **Edit** opens the Edit Node dialog box for the selected node.
- **Color** allows you to change the color of the selected node.
- **Align Nodes** opens a cascading menu that lets you choose how the selected nodes are aligned.
- **Show As Group** displays two or more selected nodes as a single grouped item.
- **Show As Nodes** expands selected group nodes into component nodes.

1: Getting Started

- **Find Node** locates a specific node and displays it in the center of the document window.
- **Set Start Node** assigns the selected node as the start node for the presentation.
- **Show Start Node** locates the start node and displays it in the center of the document window.
- **Set Restart Node** assigns the selected node as the restart node for the presentation.
- **Show Restart Node** locates the restart node and displays it in the center of the document window.
- **Menu Node** makes any new nodes menu nodes.
- **Sequence Node** makes any new nodes sequence nodes.
- **Arrange Nodes** redraws and arranges the nodes and paths, so that the document is more readable.

Path Menu

The Path menu provides the following commands:

- **Show Paths** sets which paths are displayed in the document window.
- **Color** changes the color of the selected node and its associated paths.
- **Align Vertices** displays a cascading menu that allows you to select an alignment for the selected path vertices.
- **Add Vertex** adds a vertex to the selected path at its midpoint.
- **Show Origin** displays the node where the selected path starts.
- **Show Destination** displays the node where the selected path ends.

Script Menu

The Script menu provides the following commands:

- **Set Startup Image** sets the startup image for the document.
- **Show Startup Image** displays the startup image in the center of the document window.
- **Copy Directory to Photo CD** allows you to select a directory to be copied onto the final Photo CD Portfolio disc.
- **Preview Presentation** allows you to view the presentation as it would play on a KODAK Photo CD player.

- **Verify** checks your document for errors before building the script.
- **Verify Next** continues verification of the current document.
- **Build Script** builds the document script used to create the Photo CD Portfolio disc.

Window Menu

The Window menu provides the following commands:

- **Toolbar** displays or hides the toolbar.
- **Status Bar** displays or hides the status bar.
- **Cascade** arranges and resizes the windows in the Arrange-It software application window in an overlapping pattern.
- **Tile** arranges and resizes the windows side by side, so that all windows are visible.
- **Arrange Icons** organizes the icons of minimized documents and collections along the lower edge of the application window.
- **1 [filename], 2 [filename]** lists all open windows. The active window title is preceded by a checkmark.

Help Menu

The Help menu provides the following commands:

- **Contents** opens the Help table of contents window. Press F1 at any time to open the Help contents window.
- **About Arrange-It** displays a screen showing Arrange-It software copyright information and version number.

Toolbar

The toolbar at the top of the application window contains the tools used to build and edit an Arrange-It software document. Each tool is represented by a distinctive icon. To activate a command, click its icon.

New



Creates a new document or collection.

1: Getting Started

Open



Opens an existing document or collection.

Save



Saves changes made to the current document.

Cut



Removes the selected item and places it on the Clipboard.

Copy



Makes a copy of the selected item and places it on the Clipboard.

Paste



Inserts the contents of the Clipboard into the active document.

Menu Node



Creates menu nodes when icon selected.

Sequence Node



Creates sequence nodes when icon selected.

View All Nodes



Redraws the document window, so that all nodes in the document are visible.

Restore View



Returns a document window back to previous magnification after a View All.

Preview Presentation



Previews the current presentation document.

Arrow



Selects items in the collection or document windows.

Speaker



Plays audio files in the collection window or in nodes in the document window.

Mover Hand



Provides an alternative to scrolling with scroll bars. Press and hold down the mouse button and drag the mover hand in the document window. The document window scrolls according to how you drag the mover hand.

Magnifying Glass (+)



Zooms into the document window.

Magnifying Glass (-)



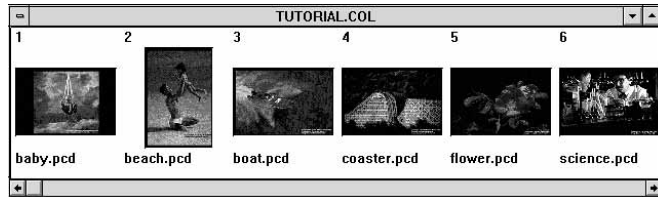
Zooms out of the document window.

1: Getting Started

Collection Window

A collection window contains images and audio files from an open collection file.

Collection window



Images and audio files are selected from the collection window and placed in the document window to create a presentation. Refer to Chapter 3, "Working With Collections," for a description of collections and the collection window.

Document Window

The document window provides the work area where you construct a presentation. You can zoom the window in or out, depending on how much of the document you want to view and how much detail you need to see. You can use the scroll bars or mover hand to see items that are out of view.

Arrange-It software document window

