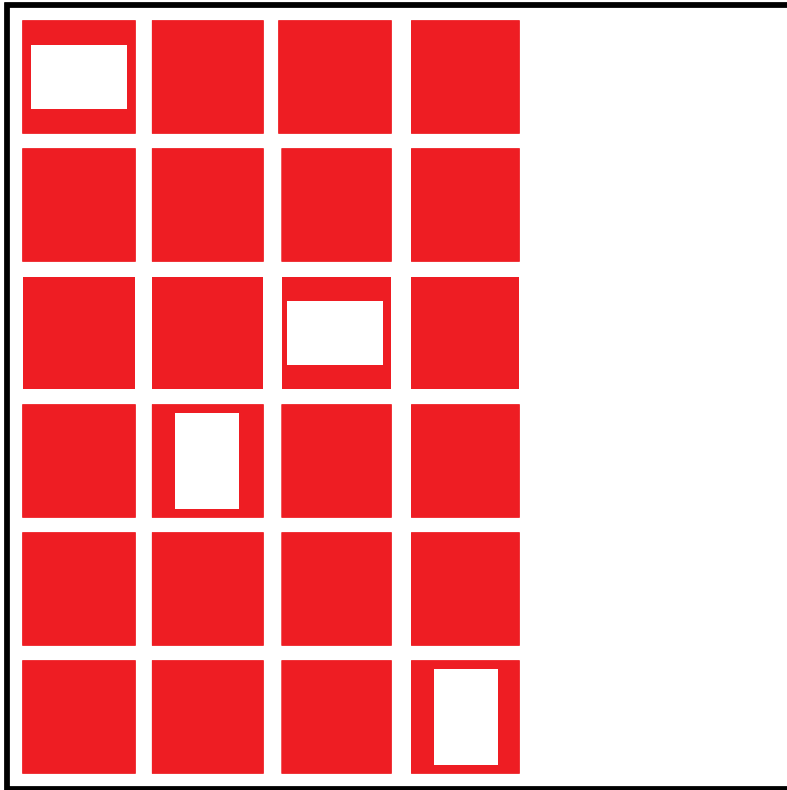


2: Using the Tutorial



2: Using the Tutorial

This tutorial is designed to familiarize you with the fundamentals of KODAK Arrange-It Photo CD Portfolio Layout software. It is organized into seven easy-to-follow lessons. At the end of Lesson 7, you will have created a sample presentation that contains a menu with three themes. You can display and play the presentation from beginning to end, or you can select and display one or more of the themes in any order.

Each lesson is set up so that you can save your work and return to the tutorial later or proceed immediately to the next lesson. Each tutorial lesson deals with producing a different aspect or portion of your presentation.

Lesson 1 starts the application, saves a new document to your hard disk, and opens an existing collection.

Lesson 2 selects and previews two files—an image and an audio file—before importing them into the tutorial collection, and reviews editing features available for files in the collection window.

Lesson 3 introduces the concept of a menu node, creates a menu node in the document, adds two files to the menu node, creates two menu selection tabs and defines hot spots, and applies transitions and delays for the menu node files.

Lesson 4 introduces the concept of sequence nodes and provides instructions for creating six sequence nodes.

Lesson 5 creates paths to connect the menu node and the sequence nodes, and adds vertices to the paths so they are easier to follow.

Lesson 6 reviews the verification process used to find errors in running your presentation, views a completed presentation to see how it plays, and previews your presentation using the player emulator.

Lesson 7 covers the steps necessary to build a script and prepare your presentation to be placed on a KODAK Photo CD Portfolio disc.

IMPORTANT: *This tutorial assumes that you have performed the default installation with all Installation Options selected. If you have installed the application in a drive and directory other than the default, you must take this into account when you are opening and saving tutorial files.*

2: Using the Tutorial

Lesson 1: Creating a New Document

In Lesson 1, you learn how to start the Arrange-It software application, save a new document to your hard disk, and open an existing collection.

If you have not already installed Arrange-It software, refer to Chapter 1, “Getting Started,” for installation instructions. All the files that you need to complete your sample presentation are installed with the software.

Starting the Arrange-It Software Application

To start Arrange-It software from the Program Manager:

1. Double-click the KODAK Arrange-It Program Group.
2. Double-click the KODAK Arrange-It software icon.

The Arrange-It software application window appears containing the Default Collection with a Null Image in the collection window.

A new document window, “Untitled Document-1,” displays below the collection window.

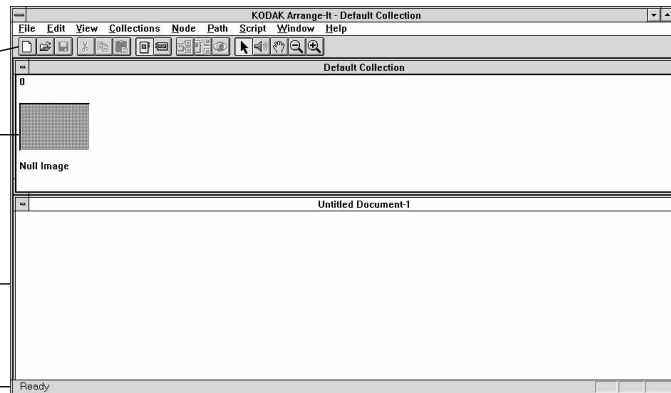
Arrange-It software
application window

Toolbar

Collection window

Document window

Status bar



Saving the Document

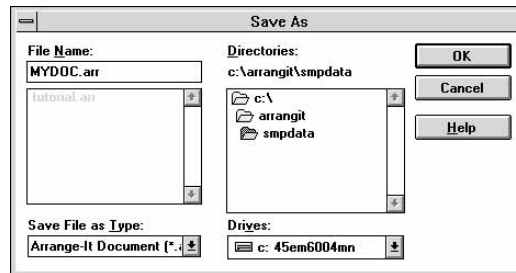
You use the Save As command from the File menu to save the untitled Arrange-It software document to your hard disk. The Save As dialog box allows you to select the drive and directory where you want to save the sample presentation and to name it. You can also use the Save As command to make a duplicate copy of your presentation.

To save the untitled Arrange-It software window:

1. Click in the document window to select it.
2. Choose Save As from the File menu.

The Save As dialog box appears.

Save As dialog box



3. Double-click SMPDATA in the Directories list box, which is a subdirectory of the C:\ARRANGIT directory created when you installed the application.
4. Delete the asterisk (*) in the File Name text box and type MYDOC.
5. Click OK.

MYDOC.ARR is written to the SMPDATA directory, and the document window title bar changes to MYDOC.ARR.

Opening an Existing Collection

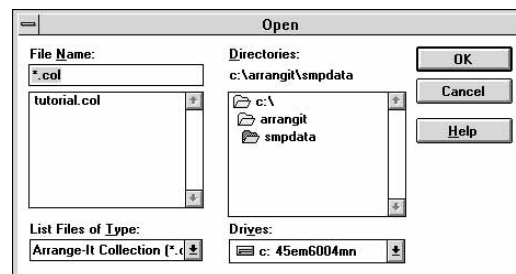
You are now ready to open a collection of images and display it in the application window. The sample presentation uses images in TUTORIAL.COL, which was installed with Arrange-It software.

To open the TUTORIAL.COL collection:

1. Choose Open from the Collections menu.

The Open dialog box appears.

Open collection dialog box



2: Using the Tutorial

2. Double-click SMPDATA in the Directories list box.
3. Select TUTORIAL.COL from the File Name list box.
4. Click OK.

The TUTORIAL.COL collection window opens above the MYDOC.ARR document window.

TUTORIAL.COL collection
and MYDOC.ARR
document windows

TUTORIAL.COL collection
window

MYDOC.ARR document
window



Ending Lesson 1

If you do not plan to proceed to Lesson 2

1. Click the MYDOC.ARR document window to make it the active window and choose Close from the File menu.
2. Click the TUTORIAL.COL collection window to make it the active window and choose Close from the File menu.

Lesson 2: Importing Files Into the Collection

In Lesson 2, you will learn how to select and preview two files before importing them into TUTORIAL.COL, and review editing features available for files in the collection window.

Setting Up for Lesson 2

If you just completed Lesson 1, your screen should display the TUTORIAL.COL collection and MYDOC.ARR document window.

2: Using the Tutorial

If you stopped after Lesson 1, you need to start the Arrange-It software application and open MYDOC.ARR to continue with Lesson 2.

To open MYDOC.ARR:

1. Choose Open from the File menu (CTRL+O).
2. Double-click SMPDATA in the Directories list box.
3. Select MYDOC.ARR from the File Name list box.
4. Click OK.

The MYDOC.ARR document window opens.

Open the TUTORIAL.COL from the SMPDATA directory.

1. Choose Open from the Collections menu.
2. Double-click TUTORIAL.COL in the SMPDATA directory.

The TUTORIAL.COL collection window opens.

Selecting, Previewing, and Importing Files

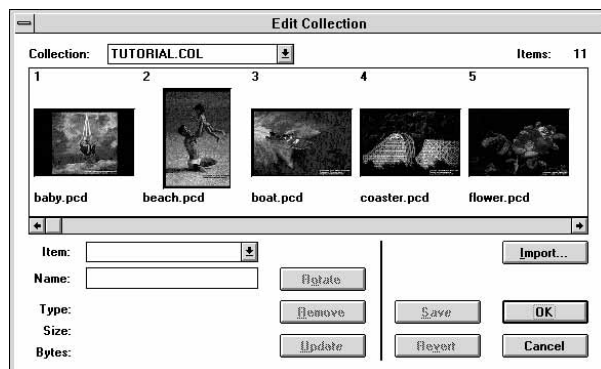
For the sample presentation, you will need to import two files into TUTORIAL.COL. These files are contained in the SMPDATA directory, which was installed on your hard disk with Arrange-It software.

To preview and import the files into TUTORIAL.COL:

1. Click the TUTORIAL.COL collection window to make it the active window.
2. Choose Edit from the Collections menu.

The Edit Collection dialog box appears.

Edit Collection dialog box

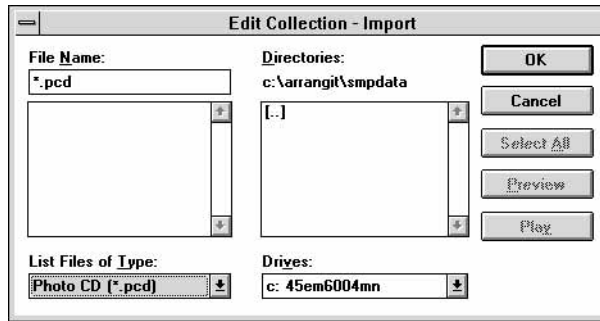


2: Using the Tutorial

3. Click Import.

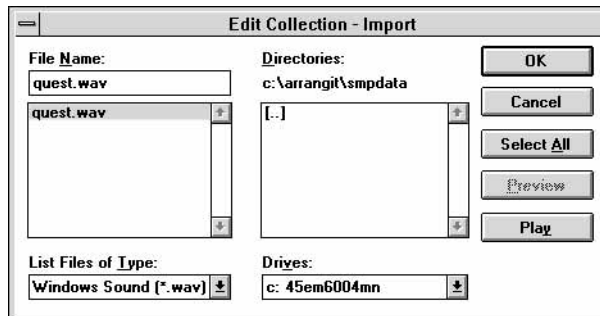
The Edit Collection–Import dialog box appears.

Edit Collection–Import dialog box



4. Select, play, and import the QUEST.WAV audio file.
 - Select Windows Sound (*.wav) from the List Files of Type drop-down list box.
 - Select the QUEST.WAV audio file from the File Name list box.

Import sound file



- Click Play to listen to the QUEST.WAV audio file. A message box containing the filename, type, time, and size is displayed while the sound plays.
- Click OK to close the Edit Collection–Import dialog box.

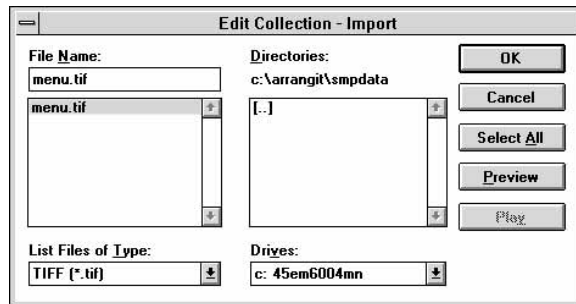
The QUEST.WAV audio file is imported and appears in the Image/Audio bar in the Edit Collection dialog box.

5. Click Import.
6. Select and preview the MENU.TIF Image Pac file.
 - Select TIFF (*.TIF) from the List Files of Type drop-down list box.

2: Using the Tutorial

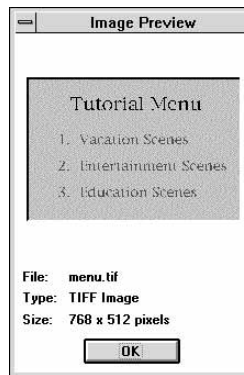
- Select MENU.TIF from the File Name list box.

Import TIFF file



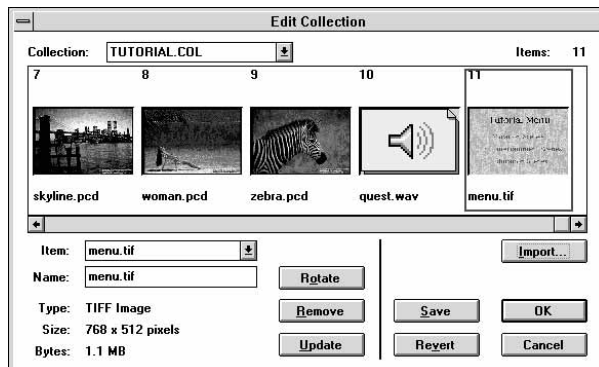
- Click Preview to display the MENU.TIF in the Image Preview window.

Image Preview window showing MENU.TIF file



- Click OK to close the Image Preview window.
- Click OK to close the Edit Collection-Import dialog box. The MENU.TIF file appears in the Image/Audio bar in the Edit Collection dialog box.

Edit Collection dialog box showing two files added to TUTORIAL.COL

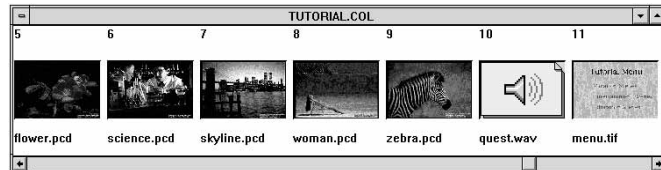


2: Using the Tutorial

7. Click OK in the Edit Collection dialog box to save the changes to TUTORIAL.COL and return to the MYDOC.ARR document window.

The TUTORIAL.COL collection now shows QUEST.WAV and MENU.TIF as the last two frames in the collection window.

TUTORIAL.COL with two files added



Editing Imported Files

You can also use the Edit Collection dialog box to edit images or audio files contained in the collection. For example, you can play audio files, remove images or audio files, assign new names to images and files, and reorder them in the collection.

For the sample presentation, we will rotate one of the images in the collection window. Refer to “Editing a Collection” in Chapter 3 for information on other Arrange-It software editing features.

If you closed the Edit Collections dialog box, select the TUTORIAL.COL collection window and choose Edit from the Collections menu.

To rotate an image:

1. Click MENU.TIF, which is the last frame in the collection window in the Edit Collection dialog box.

NOTE: You can also use the Item drop-down list box in the Edit Collection dialog box to select the image.

A red frame surrounds the selected image. Notice that the Rotate button activates when you select the image.

2. Click Rotate.
MENU.TIF rotates 90 degrees clockwise.
3. Click Rotate a second time.
MENU.TIF rotates another 90 degrees clockwise.
4. Continue to click Rotate until MENU.TIF returns to its original orientation.
5. Click OK to return to the MYDOC.ARR document window.

Ending Lesson 2

If you do not plan to proceed to Lesson 2

1. Click the MYDOC.ARR document window to make it the active window.
2. Choose Close from the File menu.
The MYDOC.ARR document window closes.
3. Click the TUTORIAL.COL collection window to make it the active window.
4. Choose Close from the File menu.
The TUTORIAL.COL collection window closes.

Lesson 3: Create a Menu Node

In Lesson 3, you will learn about a menu node, create a menu node in the document, add two files to the menu node, create two menu selection tabs and define hot spots, and apply transitions and delays for the menu node files.

Every presentation contains at least one menu node. The startup node in your document must be a menu node. A menu node can contain one image and one optional sound element.

NOTE: The menu node image can only be a horizontal (landscape) image.

Menu node tabs, located on the right side of the node, are used to connect the menu node to sequence nodes. You will learn about sequence nodes in Lesson 4. Each menu node contains the following tabs:

- **Home tab** (gray tab) is the place where other nodes connect to this node.
- **P** (Previous) indicates which node displays when the Previous button is selected on the player remote control.
- **N** (Next) indicates which node displays when the Next button is selected on the player remote control.
- **T** (Time-out) indicates which node will display if the user does not make a menu selection in a predetermined amount of time.
- **E** (Error) is the path to the node that displays if an error has been made when selecting a menu path.
- **1** (Menu 1) is the path to the first menu selection.
- **M** (Menu) is used to create more menu selection paths.

2: Using the Tutorial

Setting Up for Lesson 3

If you are continuing from Lesson 2, the TUTORIAL.COL collection and MYDOC.ARR document window should be displayed.

If you stopped after Lesson 2, you need to start the Arrange-It software application, open MYDOC.ARR and the TUTORIAL.COL collection to continue with Lesson 3.

To open MYDOC.ARR:

1. Choose Open from the File menu (CTRL+O).
The Open dialog box appears.
2. Double-click SMPDATA in the Directories list box.
3. Select MYDOC.ARR from the File Name list box.
4. Click OK.

The MYDOC.ARR document window opens.

Open the TUTORIAL.COL from the SMPDATA directory.

1. Choose Open from the Collections menu.
2. Double-click TUTORIAL.COL in the SMPDATA directory.

The TUTORIAL.COL collection window opens.

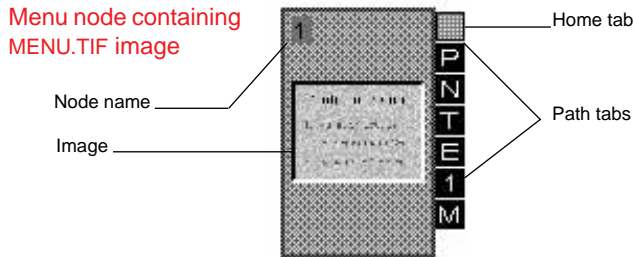
Creating a Menu Node

To create a menu node in the document:

1. Click the Arrow button on the toolbar and then click the Menu Node button, also located on the toolbar.
2. Create the menu node.
 - Click MENU.TIF in the collection window to select it. If necessary, use the scroll bar to scroll the images in the collection window until the file displays.
 - Hold down the mouse button and drag the image from the collection window into the document window. As you drag the image, the arrow pointer becomes a menu node icon.

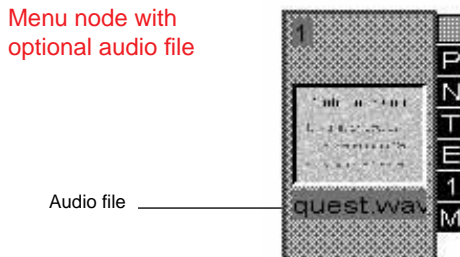
2: Using the Tutorial

- Release the mouse button. Arrange-It software creates a menu node in the document window containing the MENU.TIF image. The number 1 displays in the upper-left corner of the menu node.



3. Add the QUEST.WAV file to Menu Node 1.

- Click QUEST.WAV in the collection window to select it.
- Hold down the mouse button and drag the audio file from the collection window onto Menu Node 1.
- Release the mouse button. The sound file is added to the menu node and its name displays below the image.



- Click the Speaker button on the toolbar. Notice that the arrow changes to a speaker when you move it into the collection window or document window.
 - Click Menu Node 1 to listen to the QUEST.WAV audio file.
- ### 4. Position Menu Node 1 in the document window.
- Click the Arrow button on the toolbar
 - Click Menu Node 1 to select it.
 - Hold down the mouse button and drag the menu node to the middle of the document window and as far left as possible.
 - Release the mouse button.

2: Using the Tutorial

Defining and Positioning Hot Spots

Since Photo CD Portfolio discs can also be viewed on CD-I or 3DO players, which do not have a numbered remote control, you need to create rectangular hot spots associated with each menu Item on MENU.TIF. When the final presentation is viewed on CD-I or 3DO players, the menu Item is selected by positioning the trackball or joystick over the menu Item and then clicking inside the associated menu Item hot spot.

The sample presentation has three menu Items, which are already contained in MENU.TIF added to Menu Node 1. These menu Items are

1. Vacation Scenes
2. Entertainment
3. Education Scenes

Since Menu Node 1 contains only one menu selection tab, you will need to create two additional menu selection tabs and define the hot-spot frames for all three menu Items in MENU.TIF.

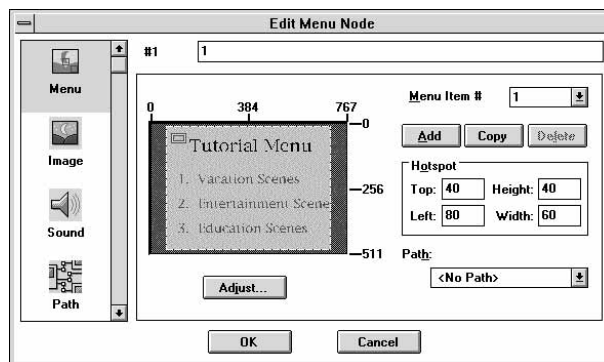
To create menu selection tabs and define the hot-spot frames:

1. Click Menu Node 1 in the document window to select it.
2. Choose Edit from the Node menu.

The Edit Menu Node dialog box appears showing the Menu modification screen.

Arrange-It software includes a default hot-spot frame in the upper-left corner on the image. When you have multiple hot-spot frames, the active frame is highlighted.

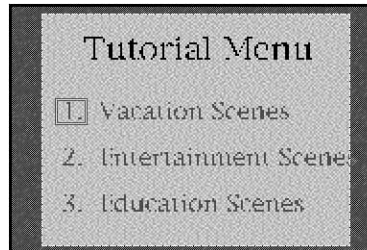
Menu screen from the Edit Menu Node dialog box



3. Create a hot-spot frame for MENU.TIF item, “1. Vacation Scenes.”

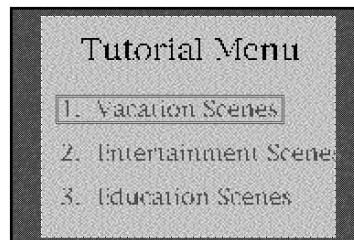
- Click the arrow cursor in the center of the hot-spot frame. Hold down the mouse button and drag the hot-spot frame until it is centered over “1.” Release the mouse button.

Hot-spot frame
positioned over “1.”



- Click the lower-right corner of the hot-spot frame. Hold down the mouse button and drag the corner of the frame to the right until it encloses “1. Vacation Scenes.” Release the mouse button.

Hot-spot frame
enclosing text of the
first item in MENU.TIF



The values in the Hotspot section of the Edit Menu Node dialog box update to indicate the dimensions of the hot-spot frame that you just created.

You can enter specific dimensions in the Hotspot text boxes to fine tune the dimensions for the Top, Left, Height, and Width of each hot-spot frame. This is useful when lining up multiple menu Items.

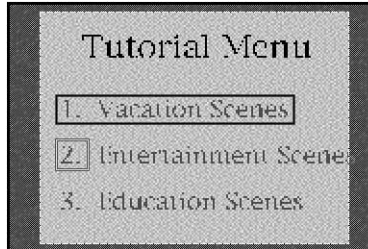
4. Add a second menu selection tab on Menu Node 1 and create a hot-spot frame for MENU.TIF item, “2. Entertainment Scenes.”

This step uses the Add button in the Edit Menu Node dialog box to create a hot-spot frame, producing the same effect as clicking the M tab on a menu node.

2: Using the Tutorial

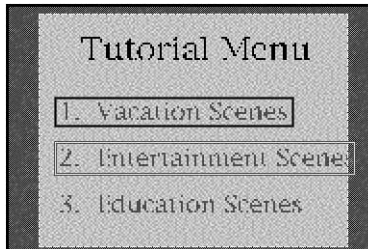
- Click Add to create a second hot-spot frame on MENU.TIF. The arrow pointer disappears and a cross appears in the upper-left corner of the image.

Second hot-spot frame



- Move the cross to the upper left of “2.” Hold down the mouse button and drag the cross down and to the right to draw a new hot-spot frame.
- Release the mouse button when the frame encloses the menu Item.
- Click the lower-right corner of the hot-spot frame. Hold down the mouse button, and drag the corner of the frame to make any size adjustments.
- Click the middle of the hot-spot frame. Hold down the mouse button and drag to adjust the position.

Hot-spot frame enclosing text of the second Item in MENU.TIF



5. Add a third menu selection tab to Menu Node 1 and create a third hot-spot frame for MENU.TIF Item, “3. Education Scenes.”
 - Click Add to display the cross in the upper-left corner of the image.
 - Define the third hot-spot frame over the menu Item, “3. Education Scenes,” using the procedure described in Step 4.

Completed hot spots

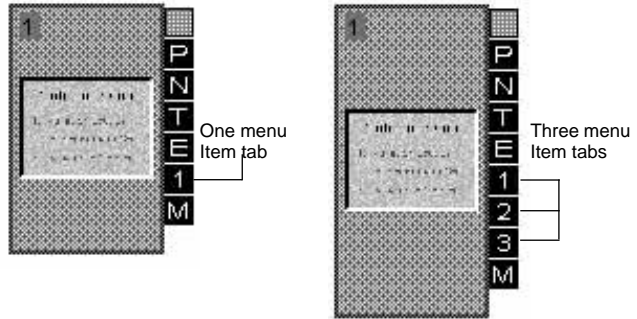


2: Using the Tutorial

- Click OK in the Edit Menu Node dialog box to return to MYDOC.ARR.
- Click anywhere in the document window to deselect Menu Node 1.

Menu Node 1 now contains three menu selection tabs.

Menu Item tab connectors



Applying Transitions and Delays

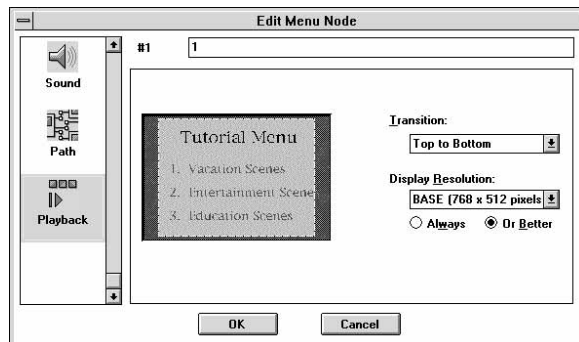
A transition is the manner in which the image on the screen is replaced by the next image. Two examples of transitions are Cross Fade and Top to Bottom.

You can also control the amount of delay after an image is displayed on the screen or a sound file is played. For example, if there are two images in a sequence node and you want the first image to remain on-screen for 15 seconds, you set the delay to 15 seconds. If an image is followed by an audio file, you may want to set the delay to zero (0), so that the audio file plays immediately.

To apply the transition and delay for Menu Node 1:

- Click Menu Node 1 in the document window to select it.
- Choose Edit from the Node menu and click the Playback icon in the Edit Menu Node category list box.

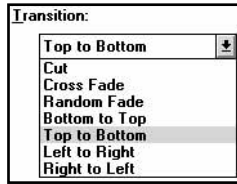
Playback modification screen from the Edit Menu Node dialog box



2: Using the Tutorial

3. Select Cross Fade from the Transition drop-down list box.

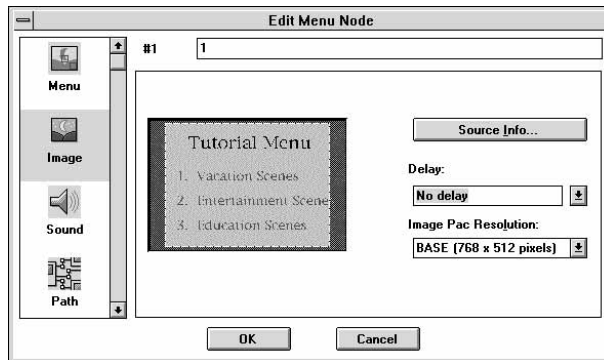
Transition drop-down list box



4. Click the Image icon in the Edit Menu Node category list box.

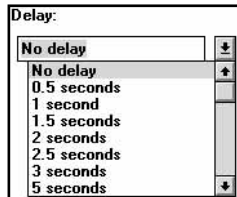
The Image modification screen displays in the Edit Node dialog box.

Image modification screen from the Edit Node dialog box



5. Select 0.5 seconds from the Delay drop-down list box.

Delay drop-down list box



6. Click OK to apply the transition and set the delay.

Ending Lesson 3

If you do not plan to proceed to Lesson 4, close MYDOC.ARR and the TUTORIAL.COL collection. Make sure you save the changes that you made to the document.

If you do plan to proceed to Lesson 4, choose Save from the File menu (CTRL+S) to save any changes to the sample presentation, but do not close the MYDOC.ARR document window.

Lesson 4: Create Sequence Nodes

In Lesson 4, you learn about sequence nodes and create six sequence nodes in the MYDOC.ARR document.

Sequence nodes can hold any number of images and sound files. Unlike a menu node, sequence nodes do not contain menu selection tabs, but they do contain path tabs, which are located on the left side of the node. Each sequence node contains the following tabs:

- **Home tab** (gray tab) is the place where other nodes connect to this node.
- **P (Previous)** indicates which node displays when the Previous button is selected on the player remote control.
- **N (Next)** indicates which node displays when the Next button is selected on the player remote control.

Setting Up for Lesson 4

If you just completed Lesson 3, your screen should display the MYDOC.ARR document window.

If you stopped after Lesson 3, you need to open MYDOC.ARR and the TUTORIAL.COL collection located in the C:\ARRANGIT\SMPDATA directory to continue with Lesson 4. Refer to “Setting Up for Lesson 3” if you need to review complete instructions for opening MYDOC.ARR and the TUTORIAL.COL collection.

Creating Sequence Node 2

Since the first node in the sample presentation is Menu Node 1, the sequence nodes will begin with the number 2. Sequence Node 2 will contain two images from TUTORIAL.COL collection—the red flower (FLOWER.PCD) and the research scientists (SCIENCE.PCD).

To create Sequence Node 2 in the document window:

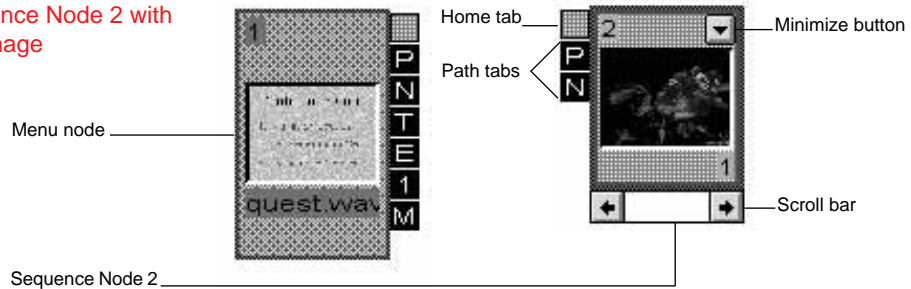
1. Click the Arrow button on the toolbar and then the click Sequence Node button, also located on the toolbar.
2. Create the sequence node using FLOWER.PCD as the first image in the sequence node.
 - Click the image in the collection window to select it.
 - Hold down the mouse button and drag FLOWER.PCD from the collection window into the document window.

2: Using the Tutorial

- Release the mouse button when the sequence node icon is in the document window.

Sequence Node 2 displays in the document window and contains the image of the red flower.

Sequence Node 2 with one image

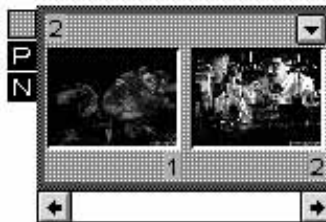


3. Add SCIENCE.PCD as the second image in Sequence Node 2.

- Click the image in the collection window to select it.
- Hold down the mouse button and drag the image from the collection window into the document window and to the right side of the sequence node.
- Release the mouse button when the sequence node icon becomes an insertion icon—a double-headed arrow.

Sequence Node 2 now contains the image of the research scientists positioned to the right of the red flower image.

Sequence Node 2 with two images

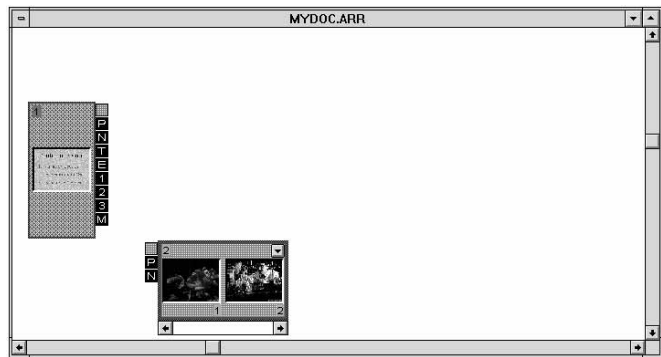


As you noticed when you were dragging the SCIENCE.PCD image from the collection window to the sequence node, the sequence node icon became a double-headed arrow or four inward-pointing arrows over the sequence node, depending on where you had the image within the sequence. These icons determine the placement of the image or audio file in the sequence node.

- A **double-headed arrow** is an insertion icon. The image or audio file is inserted at the indicated position.

- **Four inward-pointing arrows** constitute a replacement icon. The image or audio file that you are dragging from the collection window replaces the file at the indicated position.
4. Position Sequence Node 2 in the document window.
 - Click Sequence Node 2 to select it.
 - Hold down the mouse button and drag the sequence node into the document window.
 - Release the mouse button when you have positioned the sequence node as low as possible in the middle of the document window. MYDOC.ARR should now look like the following example.

MYDOC.ARR with Menu
Node 1 and Sequence
Node 2



Create Sequence Nodes 3 through 7

You will use the same procedure described in creating Sequence Node 2 to create the remaining sequence nodes and add images.

When the step asks you to use the drag-and-drop method to create a sequence node or to add an image, you should:

1. Click the image in the collection window to select it.
2. Hold down the mouse button.
3. Drag the image from the collection window into the document window and position it as instructed in the step.
4. Release the mouse button at the location designated in the step.

You are now ready to create the remaining sequence nodes for the sample presentation.

1. Create Sequence Node 3, which will contain one image—the zebra (ZEBRA.PCD).

2: Using the Tutorial

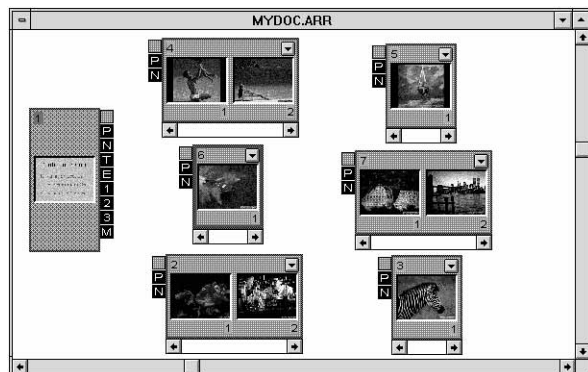
- Click the Sequence Node button on the toolbar.
 - Click ZEBRA.PCD to select it.
 - Use the drag-and-drop method to place the image in the document window and create Sequence Node 3. Release the mouse button when the sequence node icon appears in the document window.
 - Click Sequence Node 3 to select it. Use the drag-and-drop method to position the sequence node in the lower right-hand corner of the document window and to the right of Sequence Node 2.
2. Create Sequence Node 4, which will contain two images—the man and child on the beach (BEACH.PCD) and the woman on the beach (WOMAN.PCD).
- Click BEACH.PCD to select it.
 - Use the drag-and-drop method to place BEACH.PCD in the document window and create Sequence Node 4. Release the mouse button when the sequence node icon appears in the document window.
 - Click WOMAN.PCD to select it. Use the drag-and-drop method to position the image to the right side of BEACH.PCD. Release the mouse button when the insertion icon appears.
 - Click Sequence Node 4 to select it. Use the drag-and-drop method to position the sequence node as high up as possible in the middle of the document window.
3. Create Sequence Node 5, which will contain one image—the baby in the sky (BABY.PCD).
- Click BABY.PCD to select it.
 - Use the drag-and-drop method to place the image in the document and create Sequence Node 5. Release the mouse button when the sequence node icon appears in the document window.
 - Click Sequence Node 5 to select. Use the drag-and-drop method to position the sequence node in the upper right-hand corner of the document window and to the right of Sequence Node 4.
4. Create Sequence Node 6, which will contain one image—the speedboat (BOAT.PCD).
- Click BOAT.PCD to select it.
 - Use the drag-and-drop method to place the image in the document and create Sequence Node 6. Release the mouse button when the sequence node icon appears in the document window.
 - Click Sequence Node 6 to select it. Use the drag-and-drop method to position the sequence node in the middle of the document window and to the right of Menu Node 1.

2: Using the Tutorial

5. Create Sequence Node 7, which will contain two images—the roller coaster (COASTER.PCD) and the Manhattan skyline (SKYLINE.PCD).
 - Click COASTER.PCD to select it.
 - Use the drag-and-drop method to place the image in the document and create Sequence Node 7. Release the mouse button when the sequence node icon appears in the document window.
 - Click SKYLINE.PCD. Use the drag-and-drop method to position the image to the right side of the image of the roller coaster. Release the mouse button when the insertion icon appears.
 - Click Sequence Node 7 to select it. Use the drag-and-drop method to position the sequence node in the middle of the screen and as far to the right of Sequence Node 6 as possible.

The MYDOC.ARR document window should now look like this example.

MYDOC.ARR after creating
Menu Node 1 and six
sequence nodes



If your document does not have the sequence nodes positioned as shown in the example, you should reposition them at this time.

Ending Lesson 4

If you do not plan to proceed with Lesson 5, close the TUTORIAL.COL collection and MYDOC.ARR. Make sure you save the changes that you made to the document.

If you plan to proceed to Lesson 5, save the changes made to this point.

Lesson 5: Connecting Nodes

In Lesson 5, you will create paths to connect the menu node and the six sequence nodes, and add vertices to the paths, so that they are easier to follow in the document.

Arrange-It software uses paths to visually describe the order in which nodes are displayed by a Photo CD player. Each node has a set of tabs along its side for making path connections. Paths always begin at a numbered or lettered tab and end at the top-most gray tab, called the home tab.

Setting Up for Lesson 5

If you are continuing from Lesson 4, you should have the TUTORIAL.COL collection and MYDOC.ARR document window displayed on your screen showing Menu Node 1 and the six sequence nodes.

If you stopped after Lesson 4, you need to open MYDOC.ARR and the TUTORIAL.COL collection located in the `C:\ARRANGIT\SMPDATA` directory to continue with Lesson 5. Refer to “Setting Up for Lesson 3” if you need to review complete instructions for opening MYDOC.ARR and the TUTORIAL.COL collection.

Creating Paths to Connect the Nodes

To create the paths between Menu Node 1 and the sequence nodes:

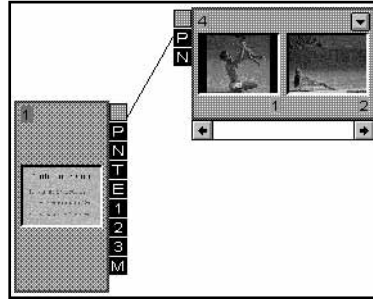
1. Click the Arrow button on the toolbar.
2. Create a path between the P tab on Menu Node 1 (Previous path) and Sequence Node 4.
 - Click the P tab on Menu Node 1 to select it.
 - Hold down the mouse button and drag the cursor across the document window toward the middle of Sequence Node 4.

As you drag the cursor, a line displays indicating the connection between the P tab on Menu Node 1 and Sequence Node 4.

2: Using the Tutorial

- Release the mouse button when the line is over Sequence Node 4. The path line automatically snaps to the home tab. You have now created the Previous path.

Path connection for the P tab on Menu Node 1 and the home tab on Sequence Node 4



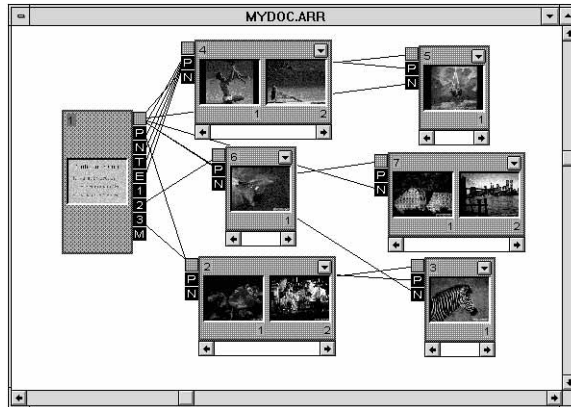
3. Use the following table to create the remaining path connections.

Click Tab ...	From Node...	Hold Down Mouse Button and Drag to ...	To Create Path ...
N	Menu 1	Sequence 4	Next
T	Menu 1	Sequence 4	Time-out
E	Menu 1	Sequence 4	Error
1	Menu 1	Sequence 4	Menu 1
2	Menu 1	Sequence 6	Menu 2
3	Menu 1	Sequence 2	Menu 3
P	Sequence 4	Menu 1	Previous
N	Sequence 4	Sequence 5	Next
P	Sequence 5	Sequence 4	Previous
N	Sequence 5	Menu 1	Next
P	Sequence 6	Menu 1	Previous
N	Sequence 6	Sequence 7	Next
P	Sequence 7	Sequence 6	Previous
N	Sequence 7	Menu 1	Next
P	Sequence 2	Menu 1	Previous
N	Sequence 2	Sequence 3	Next
P	Sequence 3	Sequence 2	Previous
N	Sequence 3	Menu 1	Next

2: Using the Tutorial

The MYDOC.ARR document window should now look like the following example.

MYDOC.ARR showing all path connections



Adding a Vertex to a Path

As you can see from the path connections made between Menu Node 1 and the sequence nodes, crossing paths can quickly confuse the look of your presentation, making it difficult to read and understand the paths. You can add vertices to a path, which make it easier to follow the paths. A vertex is a small square located on a path that allows the path to bend. There is no limit to the number of vertices that you can add to a path.

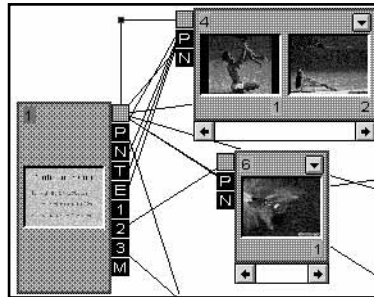
You can add a vertex at the time you create the path or you can add a vertex to an existing path. Refer to “Adding Vertices” in Chapter 5 for instructions on creating a vertex on a path at the time that you create it.

To add vertices to the existing paths:

1. Create a vertex on the P tab path.
 - Press and hold down the ALT key.
 - Click the P tab path originating on Menu Node 1. A vertex forms at the point where you clicked on the path.
 - Hold down the mouse button and drag the created vertex to the desired location.

- Release the mouse button when the vertex is at the desired location.

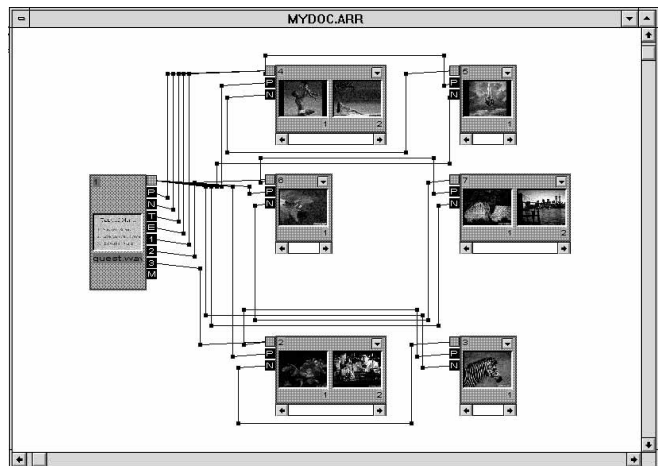
Vertex on the path connecting P tab on Menu Node 1 and home tab on Sequence Node 4



- Add a vertex to each of the path connections.

You can create your own vertices following the instructions in Step 1 or you can choose Arrange Nodes from the Node menu. For the sample presentation, we suggest that you choose Arrange Nodes from the Node menu to add the vertices.

MYDOC.ARR after using Arrange Nodes from Node menu



- Choose Save from the File menu (CTRL+S).

Ending Lesson 5

If you do not plan to proceed with Lesson 6, close TUTORIAL.COL and MYDOC.ARR. Make sure you save any changes that you made to the document.

Lesson 6: Verify and Preview Presentation

In Lesson 6, you will use the Arrange-It software verification process to find errors in running your presentation, view a completed presentation to see how your presentation should play, and preview your presentation using the player emulator.

Setting Up for Lesson 6

If you are continuing from Lesson 5, you should have the MYDOC.ARR document window displayed on your screen showing the path connections for Menu Node 1 and the six sequence nodes.

If you stopped after Lesson 5, you need to open MYDOC.ARR and the TUTORIAL.COL collection located in the C:\ARRANGIT\SMPDATA directory to continue with Lesson 6. Refer to “Setting Up for Lesson 3” if you need to review complete instructions for opening MYDOC.ARR and the TUTORIAL.COL collection.

Verify Presentation

Arrange-It software provides a verification process that helps you find errors in your presentation. The types of errors the verification process finds include:

- **Unconnected Paths**—A node with one or more path connectors having no path. You may verify selected path types.
- **Nodes With No Exit**—A node with no paths leaving the Previous tab, Next tab, or other tabs that you have created on the node.
- **Orphaned Nodes**—A node with no paths connecting to its home tab.
- **Valid Start Node**—Assures that the selected start node is valid.
- **Sequences Without Images**—Assures that sequence nodes contain at least one image.
- **Null Backgrounds in Sequences**—Assures there are no Null backgrounds in sequence nodes.
- **Missing Source Files**—As part of the build process, you copy the source files to a directory that is sent to the script processing system for final disc creation. Check this item to make sure you are not missing any files that you need to build the script.
- **Modified Source Files**—Checks if any of the images or audio files have been changed.

2: Using the Tutorial

- **Calculate Transfer Size**—Calculates the amount of space needed to hold the files that you will transfer to a Photo CD disc.
- **Overlapping Hot Spots**—Makes sure that there are no hot spots that overlap on the image display screen.

The verification process is lengthy. It may be easier to verify one or two items at a time. To verify MYDOC.ARR:

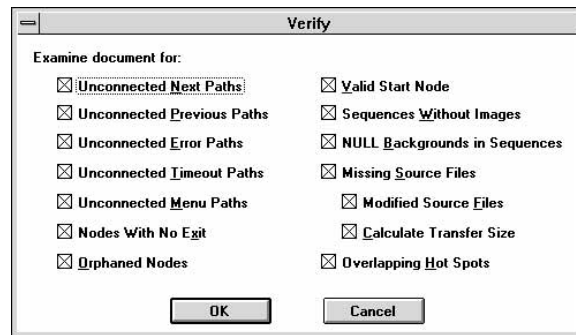
1. Insert the *KODAK Arrange-It Photo CD Portfolio Layout Software with Photo Sampler II* disc into your CD-ROM drive. This disc contains the source files that were shipped in the Arrange-It software package.

Since the verification process searches for all source files used in your presentation document, you need to be sure you have this disc in the CD-ROM drive.

2. Choose Verify from the Script menu.

The Verify dialog box appears.

Verify dialog box



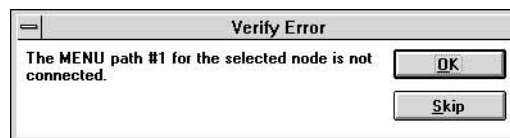
3. Check the parameters to be verified.

NOTE: You may not want to select the Missing Source Files check box until you build your script in Lesson 7.

4. Click OK in the Verify dialog box.

If one or more errors are discovered, a Verify Error message box displays showing the first error.

Verify Error message box



- Make note of the error that displays in the message box.

2: Using the Tutorial

- Click Skip to display the next error without modifying your document or OK to close the Verify Status message box.
5. Correct the error(s) in your presentation document.
6. Choose Verify Next from the Script menu.
The verification process rechecks the last error that you corrected and displays the next error in the Verify Error message box.
7. Correct all the errors in your presentation document.
8. Choose Save from the File menu (CTRL+S).

Viewing the Tutorial Document

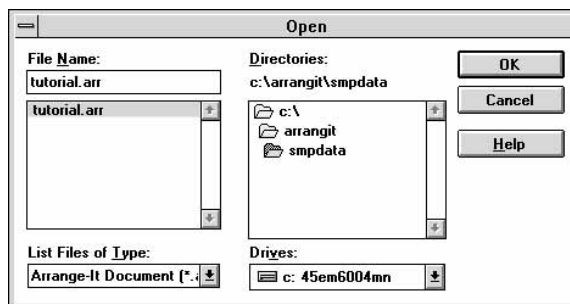
Before previewing your own presentation, it might be helpful to view TUTORIAL.ARR, a completed presentation that was installed with Arrange-It software, and take notes on the sequence in which the presentation plays. Taking time to view this presentation will give you an opportunity to see what the final results of your work should look like when you play it.

To view the TUTORIAL.ARR document:

1. Choose Open from the File menu (CTRL+O).

The Open dialog box appears.

Open dialog box

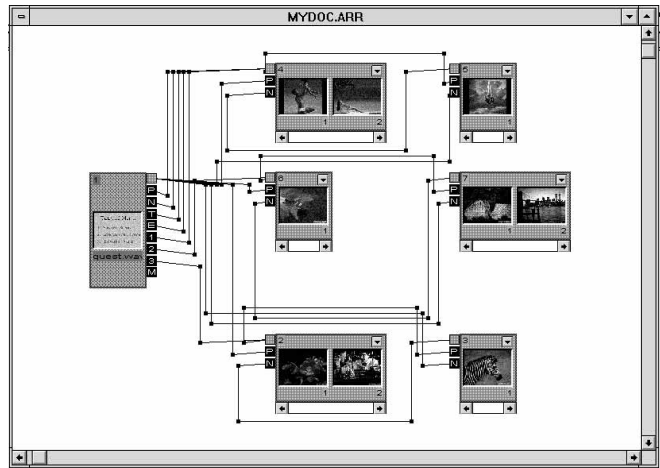


2. Select the drive and directory where you installed Arrange-It software.
3. Select TUTORIAL.ARR from the SMPDATA directory.
4. Click OK.

2: Using the Tutorial

TUTORIAL.ARR opens in the application window and the TUTORIAL.COL collection opens in the collection window. The document window should look like the MYDOC.ARR document that you created.

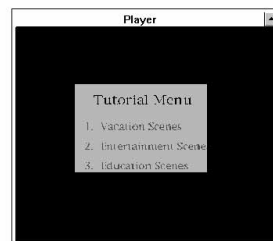
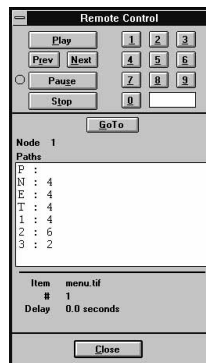
TUTORIAL.ARR document



5. Click the TUTORIAL.ARR document window to make it the active window.
6. Choose Preview Presentation from the Script menu.

The Remote Control and the Player window appear. Arrange-It software automatically begins the presentation in the Player window.

Player Remote and Display window



7. Click Close in the Remote Control to return to the TUTORIAL.ARR document.
8. Choose Close from the File menu to close the TUTORIAL.ARR document window.

2: Using the Tutorial

Preview Your Presentation

If you played the TUTORIAL.ARR document and made notes on the presentation sequence, you can use these notes to verify the sequences in your sample presentation. If you did not play the TUTORIAL.ARR document, it is recommended that you take notes on your newly created document (for example, the images or sounds contained in each node, their paths, and modifications) before starting the preview.

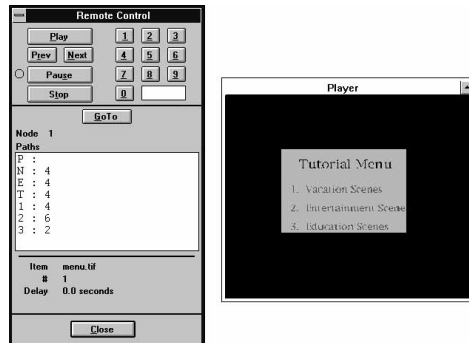
As the player emulation runs for MYDOC.ARR, verify that the document plays as expected. If your presentation does not play as expected, make corrections to the presentation document after you finish running the preview.

To preview MYDOC.ARR:

1. Open MYDOC.ARR, if it is not already in the application window.
2. Click the MYDOC.ARR document window to make it the active window.
3. Choose Preview Presentation from the Script menu.

The Remote Control and the Player window appear. Arrange-It software automatically begins the presentation in the Player window at Menu Node 1.

Player Remote and Display window



4. Click the Remote Control buttons as appropriate.
 - **Play** plays the images and sounds of the presentation in the order designated in the document.
 - **Prev** replays the previous image in a sequence or advances to another node following the Previous path.
 - **Next** advances to the next image in a sequence or advances to another node following the Next path.
 - **Pause** temporarily stops the emulation. Click again to resume playing your presentation.

- **Stop** halts the presentation and restarts at the beginning of the presentation.
 - **Number keys** select a menu path when the Display window contains a menu node. Click Play or wait for a time-out.
 - **Go To** advances to any desired node in the presentation.
5. Click Close to return to the MYDOC.ARR document window.

Ending Lesson 6

If you do not plan to proceed with Lesson 7, close MYDOC.ARR and the TUTORIAL.COL collection. Make sure you save any changes that you made to the document.

If you plan to proceed to Lesson 7, save any changes before continuing.

Lesson 7: Building a Script

In Lesson 7, you will review the steps necessary to build a script and prepare your presentation to place it on a KODAK Photo CD Portfolio disc.

Setting Up for Lesson 7

If you are continuing from Lesson 6, you should have MYDOC.ARR and the TUTORIAL.COL collection displayed on your screen showing the path connections for Menu Node 1 and the six sequence nodes.

If you stopped after Lesson 6, you need to open MYDOC.ARR and the TUTORIAL.COL collection located in the C:\ARRANGIT\SMPDATA directory to continue with Lesson 7. Refer to “Setting Up for Lesson 3” if you need to review complete instructions for opening MYDOC.ARR and the TUTORIAL.COL collection.

Building the Script

When you finish creating your presentation document, the next step is to build the script. The build-script process automatically copies all the necessary files used in creating your document and uses these files to construct your final presentation. The build-script process produces a script file—MyDocument.script—in the sample presentation. These files will be transferred to the script processing system.

Before building a script, it is a good idea to run the verification process with all items selected to make sure any changes that you made to your presentation document do not result in script errors.

2: Using the Tutorial

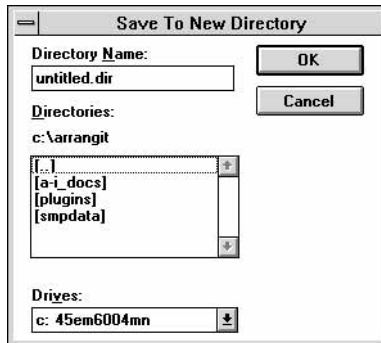
NOTE: If you elected to verify your document with the Missing Source Files check box deselected, select it now and recheck your document before building a script.

To build the script for MYDOC.ARR:

1. Choose Build Script from the Script menu.

The Save To New Directory dialog box appears.

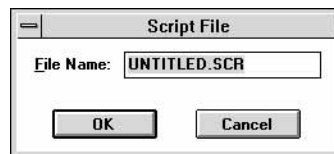
Save To New Directory dialog box



2. Create a new directory to be used for the script.
 - Enter *MYSCR* in the Directory Name text box.
 - Click OK.

The Script File dialog box appears.

Script File dialog box



3. Enter *MYDOC.SCR* in the File Name text box in the Script File dialog box.
4. Click OK.

A progress indicator appears as the script directory is created.

NOTE: To interrupt the build-script process, click Stop in the progress indicator.

The build process may take a few minutes, particularly if your document contains large Photo CD images, BMP and TIFF images, or WAV audio files.

Preparing Document for Placing on a Portfolio Disc

For the tutorial presentation that you created, we assume that you will not place your presentation document on a Photo CD Portfolio disc. Therefore, instructions in this section do not include specific directories and files that you select, but rather provide an overview of the procedure.

You need the following items that you used in creating your presentation document in order to have the presentation placed on a Photo CD Portfolio disc:

- The directory that contains the script
- All Photo CD disc(s) that contain source Photo CD images
- All source BMP and TIFF images
- All source WAV audio files

You use Copy Directory to Photo CD from the Script menu to include additional directories not involved with the creation of the actual presentation and its source files. The script will simply copy these directories onto the Photo CD Portfolio disc.

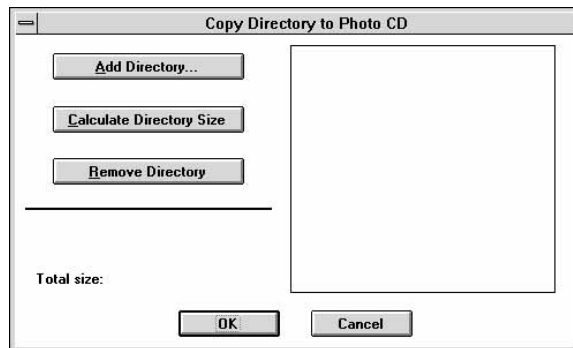
You cannot select individual files when using Copy Directory to Photo CD. They must be selected and copied before building the script.

To include these additional directories in the script:

1. Choose Copy Directory to Photo CD from the Script menu.

The Copy Directory to Photo CD dialog box appears.

Copy Directory to
Photo CD dialog box

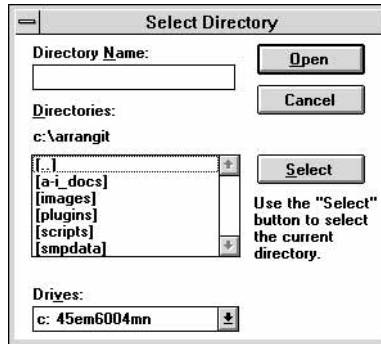


2: Using the Tutorial

2. Click Add Directory.

The Select Directory dialog box appears.

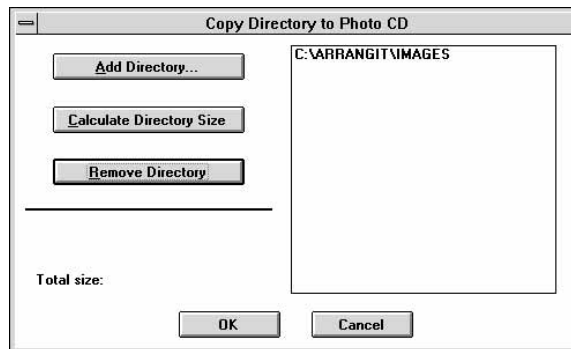
Select Directory dialog box



3. Locate the directory that contains your presentation in the Directories list box.
4. Click Select to select the current directory.

The Select Directory dialog box closes and the name of the selected directory displays on the right side of the Copy Directory to Photo CD dialog box.

Copy Directory to Photo CD dialog box with directory added



5. Repeat Steps 2 through 4 until you have indicated all the directories to be copied.
6. Display the total size of all files within a directory.
 - Select the name of a directory from the list box.
 - Click Calculate Directory Size.The size of the selected directory displays in the Total Size section of the Copy Directory to Photo CD dialog box.
7. Click OK.

Selecting Media Formats

The directory containing the files necessary to create a Photo CD Portfolio disc can be submitted on any combination of the following media:

- IBM PC compatible formatted floppy disk (1.44 MB)
- IBM PC compatible formatted removable Syquest cartridge (44 MB or 88 MB)
- KODAK Photo CD Master discs

It is recommended that you contact your authorized KODAK Photo CD Portfolio service provider for further details on the best medium to use to deliver the script and other elements of your presentation for processing.

Locating a Photo CD Service Provider

Once the necessary items are assembled, simply take them to any authorized KODAK Photo CD Portfolio service provider. In a matter of days, you will be able to pick up your Photo CD Portfolio disc containing your presentation created with Arrange-It software, as well as your original documents.

If you own *KODAK Build-It Photo CD Portfolio Disc Production* software, refer to the *KODAK Build-It Software User's Guide* for script-processing information.

Refer to "Photofinishing Information" on the Information Card included in the Arrange-It software package for information on locating service providers in your area that offer a Photo CD system.

Your Photo CD Portfolio presentation can be viewed on any KODAK Photo CD player!