

6: *Modifying Nodes*

Arrange-It software allows you to change the way an image is projected or an audio file is played in the final presentation. You use the Edit command from the Node menu to modify nodes. The Edit Menu Node dialog box contains five editing screens and the Edit Sequence Node dialog box contains two editing screens.

- **Edit Menu Node** dialog box contains Menu, Image, Sound, Path, and Playback modification screens.
- **Edit Sequence Node** dialog box contains Image and Sound modification screens.

Opening a Node Editing Dialog Box

You can select editing screens for any node and in any order. You can also make changes to several screens before saving and returning to the document window.

To open a node editing dialog box and display a modification screen:

1. Open the node editing dialog box. You can
 - Double-click the node in the document window to display the editing dialog box for the type of node selected, or
 - Click the node that you want to modify to select it and choose Edit from the Node menu.

Depending on the type of node that you selected, either the Edit Menu Node dialog box or the Edit Sequence Node dialog box appears.

2. Click the appropriate icon in the category list box, located on the left side of the node editing dialog box, to display the modification screen.

Naming a Node

Arrange-It software numbers each node in the presentation sequentially when it is created. You can, however, assign a meaningful name to the nodes using the text box that displays at the top of both the Edit Menu Node dialog box and the Edit Sequence Node dialog box.

NOTE: Although you can assign a name to the nodes in your presentation, you cannot change the node number.

6: Modifying Nodes

To name a node:

1. Double-click the node in the document window, or click the node to select it and choose Edit from the Node menu.

The Edit Menu Node or Edit Sequence Node dialog box appears, depending on the type of node selected.

2. Enter a name in the text box located at the top of the dialog box.
3. Click OK or Cancel.

OK closes the dialog box and displays the name at the top of the node and to the right of the node number in the document window.

Cancel closes the dialog box without assigning the name.

Editing Menu Nodes

There are five categories of items that can be edited in a menu node. Arrange-It software provides an editing screen for each category.

- **Menu** modification screen allows you to define menu selection paths and hot spots for a menu node.
- **Image** modification screen allows you to make changes to the way images display.
- **Sound** modification screen allows you to listen to, get information on, and delete audio files.
- **Path** modification screen allows you to change the destinations of paths associated with the menu node.
- **Playback** modification screen allows you to change the way the player displays the image.

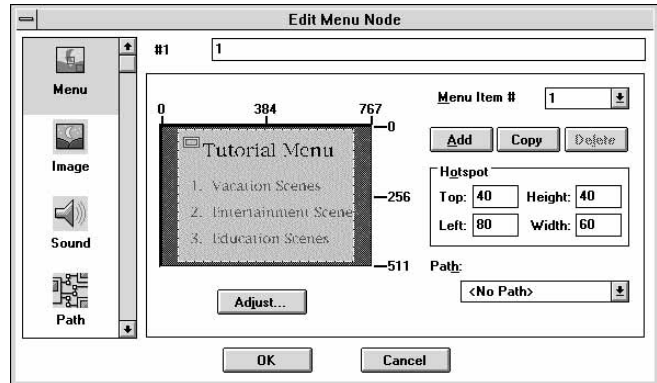
Menu Node Menu Modification Screen

The Menu modification screen from the Edit Menu Node dialog box allows you to define menu selection paths and hot spots for a menu node. Menu selections are optional paths that can be added to the document.

6: Modifying Nodes

To display the Menu modification screen, double-click the menu node in the document window. The Menu modification screen appears by default.

Menu modification screen for menu nodes



The Menu modification screen displays the menu node image and contains the following text boxes, list boxes, and buttons:

- **Node name** text box lets you name the node.
- **Menu Item #** drop-down list box shows the active menu Item and a list of items associated with the node.
- **Add** creates a new hot spot and menu Item.
- **Copy** duplicates the selected hot spot.
- **Delete** removes the selected hot spot and menu Item.
- **Hotspot** text boxes show the Top, Left, Height, and Width dimensions (in pixels) for the selected menu Item hot spot.
- **Path** drop-down list box shows the destination of the path connected to the menu Item.
- **Adjust** opens the Adjust Hotspots dialog box.
- **OK** closes the dialog box and applies the changes.
- **Cancel** closes the dialog box and discards the changes.

Since Photo CD Portfolio discs can also be viewed on CD-I or 3DO players, which do not have a numbered remote control, Arrange-It software lets you create rectangular hot spots associated with each menu Item. When the final presentation is viewed on CD-I or 3DO players, the menu selection is made by using the trackball or joystick and clicking inside the associated menu selection hot spot.

6: Modifying Nodes

Hot spots are visible only in the Menu modification screen and not in the final presentation. The hot-spot values display in the text boxes in the Menu modification screen.

Selecting Menu Items

When more than one menu Item is defined, you need to select a menu Item before you can modify any of its associated fields.

To select a menu Item, click the hot-spot frame on the image in the Menu modification screen or select the menu Item number from the Menu Item # drop-down list box. The hot-spot frame for the selected menu Item highlights on the image in the Menu modification screen.

Adding and Deleting Menu Items

You use the Menu modification screen from the Edit Menu Node dialog box to add or delete a menu Item and its associated hot spot.

To add an Item to an image displayed in the Menu modification screen.

1. Click Add in the Menu modification screen.
The arrow pointer changes to a cross and appears on the image.
2. Move the cross to the upper-left corner where you want to begin creating a new hot spot on the image.
3. Press and hold down the mouse button.
The cross becomes a double-headed arrow.
4. Drag the double-headed arrow down and to the right until it encloses the menu Item.
5. Release the mouse button when the hot spot encloses the menu Item.
A new menu Item and its hot spot is created. The values displayed in the Menu Item # drop-down list box and the four Hotspot text boxes update according to the location and size of the new menu Item.
6. Click OK or Cancel.
OK closes the dialog box and an additional menu Item and numbered path tab are added to the menu node, producing the same result as clicking the M tab on the menu node.
Cancel closes the dialog box without adding a menu Item and numbered path tab.

To delete a menu Item from the image displayed in the Menu modification screen:

1. Click the hot spot for the menu Item that you want to delete.
You can also select the menu Item number from the Menu Item # drop-down list box.
2. Click Delete in the Menu modification screen.
The menu Item and its associated hot spot are deleted from the image in the Menu modification screen.
3. Click OK or Cancel.
OK closes the dialog box and deletes the numbered path from the node.
Cancel closes the dialog box and discards the change.

NOTE: You cannot delete the last menu Item in the Menu modification screen. When only one menu Item remains, the Delete button dims.

Adjusting Hot Spots

The Menu modification screen contains four hot-spot edit boxes that allow you to change the size and position of a menu Item hot spot. You can adjust Top, Left, Height, and Width dimensions of the hot spot. The values in these edit boxes show in pixels.

You can also reposition the hot-spot frame on the image and view an enlarged image when making adjustments to the hot-spot frame.

To adjust the size and position of a hot spot on the image displayed in the Menu modification screen:

1. Click the hot-spot frame on the image to select it.
2. Enter a value in one or more of the dimension and position text boxes.
Height and Width text boxes apply changes to the dimensions of the hot spot. Top and Left text boxes apply changes to the position of the hot spot.
3. Press ENTER to see the changes in the frame size and its position on the image.
You can also drag a corner of the hot-spot frame to resize it.
4. Click OK or Cancel.
OK closes the dialog box and applies the changes.
Cancel closes the dialog box and discards the changes.

6: Modifying Nodes

To reposition the hot-spot frame on the image displayed in the Menu modification screen:

1. Click inside the frame.
2. Hold down the mouse button and drag the hot-spot frame to reposition it on the image.
3. Release the mouse button when the hot-spot frame is in the correct position.
4. Click OK or Cancel.

OK closes the dialog box and applies the changes.

Cancel closes the dialog box and discards the changes.

You can view an enlargement of the image in the Menu modification screen when making adjustments to the hot-spot frame. To view an enlarged image:

1. Click Adjust in the Menu modification screen.

The Adjust Hotspots dialog box appears and displays the menu node image zoomed to show more detail.

Adjust Hotspots dialog box

Hot-spot frame



2. Click the corner of the hot-spot frame and drag the corner until the hot-spot frame is the correct size.
3. Click OK to close the Adjust Hotspots dialog box.
4. Click OK or Cancel in the Menu modification screen.
OK closes the dialog box and applies the changes.
Cancel closes the dialog box and discards the changes.

Defining a Menu Selection Path

You use the Menu modification screen from the Edit Menu Node dialog box to define a menu selection path for a menu Item.

To define a menu selection path for the image displayed in the Menu modification screen:

1. Select the menu Item by clicking the Menu Item # drop-down list box and selecting a menu Item from the list.
2. Select the Path by clicking the Path drop-down list box and selecting a node name or number in the list.
3. Click OK or Cancel.

OK closes the dialog box and defines the menu selection path. The menu Item numbers are renumbered if necessary.

Cancel closes the dialog box and discards the changes.

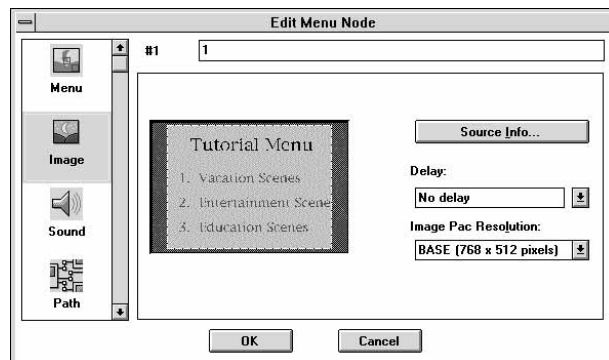
Menu Node Image Modification Screen

The Image modification screen from the Edit Menu Node dialog box allows you to make changes to the image, view source information for the displayed image, set the delay for the length of time before the next image displays or the next audio file plays, and set the Image Pac resolution used to copy images onto the Photo CD Portfolio disc.

Changes made in the Image modification screen can result in a change in the size of the image that displays, unlike changes made using the Playback modification screen, which modify only the way the player projects the image.

To display the Image modification screen, double-click the menu node in the document window and click the Image icon in the category list box.

Image modification screen for menu nodes



6: Modifying Nodes

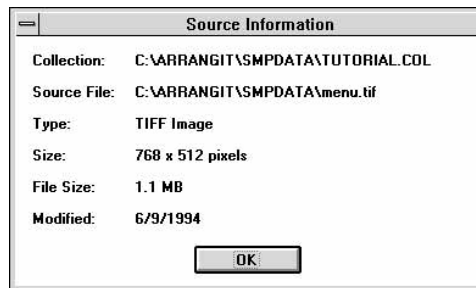
The Image modification screen displays the menu node image and contains the following text boxes, list boxes, and buttons:

- **Node name** text box lets you name the node.
- **Source Info** displays the Source Information dialog box.
- **Delay** provides a text box, as well as a drop-down list box of time intervals that allows you to select the length of time before the next image displays or the next audio file plays.
- **Image Pac Resolution** displays a drop-down list box of Photo CD Image Pac resolutions that allows you to select the maximum resolution of the image that copies onto the Photo CD Portfolio disc.
- **OK** closes the dialog box and applies the changes.
- **Cancel** closes the dialog box and discards the changes.

Viewing Source Information

To view information about the image displayed in the Image modification screen, click the Source Info button. The Source Information dialog box appears containing information about the image.

Source Information dialog box



Information shown in the dialog box includes:

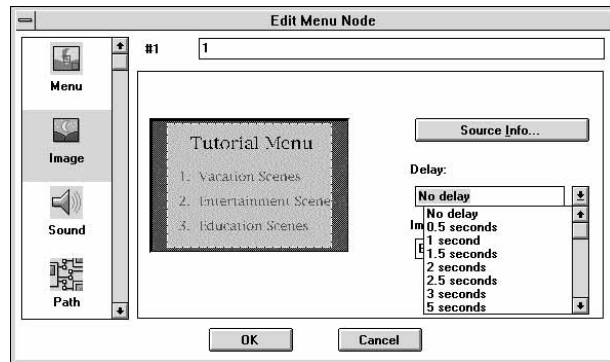
- Collection from which the image was selected
- Source file
- Type of image
- Size of image (in pixels)
- File size
- Date the image was last modified

Click OK to close the Source Information dialog box and return to the Image modification screen.

Setting the Delay

You use the Image modification screen to change the length of time before the next image displays on the screen, the next audio file plays, or the time-out path is triggered in the presentation. The current delay value appears in the Delay text box.

Image modification screen
with Delay drop-down list box



To change the delay value for the image displayed in the Image modification screen:

1. Enter a value in the Delay text box or select a value from the Delay drop-down list box.

Delay intervals range from 0.5 seconds to 300 seconds, as well as No Delay and Infinite Delay.

No Delay displays the next image, plays the next audio file, or triggers the time-out without any delay.

Infinite Delay waits for the viewer to make a selection before displaying the next image or playing the next audio file.

2. Click OK or Cancel.

OK closes the dialog box and sets the delay.

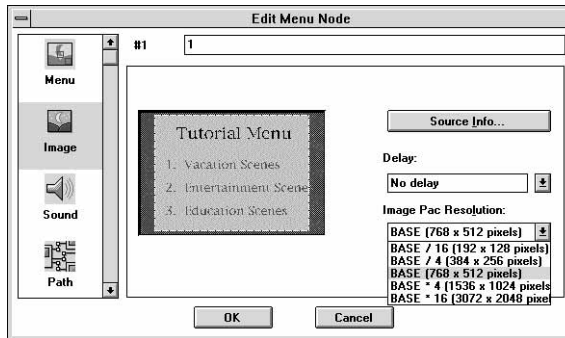
Cancel closes the dialog box and discards the delay change.

6: Modifying Nodes

Setting Image Pac Resolution

The Image modification screen contains the Image Pac Resolution drop-down list box that provides a list of resolutions used to copy images onto the Photo CD Portfolio disc.

Image modification screen with Image Pac Resolution drop-down list box



To select the Image Pac resolution for the image displayed in the Image modification screen:

1. Click the Image Pac Resolution list box and select a resolution from the list.
2. Click OK or Cancel.

OK closes the dialog box and sets the resolution.

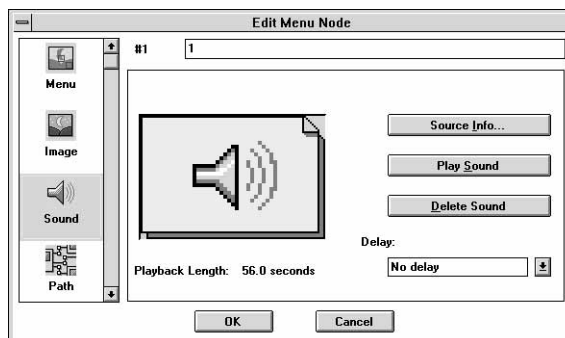
Cancel closes the dialog box and discards the changes.

Menu Node Sound Modification Screen

The Sound modification screen allows you to view source information for the audio file in a menu node, play an audio file, delete the audio file, and set the delay.

To display the Sound modification screen, double-click the menu node in the document window and click the Sound icon in the category list box.

Sound modification screen for menu nodes



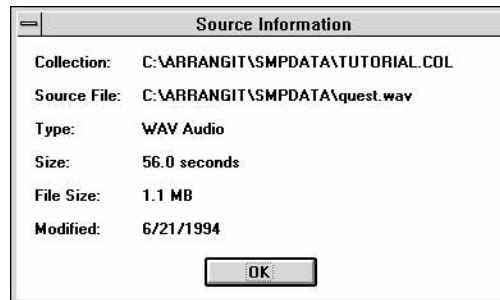
The Sound modification screen contains the following text box, list box, and information:

- **Node name** text box lets you name the node.
- **Source Info** displays the Source Information dialog box.
- **Play Sound** plays the audio file.
- **Delete Sound** deletes the audio file.
- **Delay** provides a text box, as well as a drop-down list box that allows you to select the length of time before the next image displays or the next audio file plays.
- **Playback Length** shows the length of the currently selected audio file.

Viewing Source Information

To view information about the selected audio file in the Sound modification screen, click the Source Info button. The Source Information dialog box appears containing information about the audio file.

Source Information dialog box



Information shown in the dialog box includes:

- Collection from which the audio file was selected
- Source file
- Type of file (sound)
- Size (duration of the audio file in seconds)
- File size
- Date the audio file was last modified

Click OK to close the Source Information dialog box and return to the Sound modification screen.

6: Modifying Nodes

Playing an Audio File

To play the selected audio file in the Sound modification screen, click the Play Sound button. You can play the entire audio file or you can click anywhere in the Sound modification screen to stop the playback.

Deleting an Audio File

To delete the audio file from the Sound modification screen:

1. Click Delete Sound.

The audio file is deleted and NO AUDIO replaces the speaker icon in the Sound modification screen.

2. Click OK or Cancel.

OK closes the dialog box and sets the changes.

Cancel closes the dialog box and discards the changes.

Setting the Delay

You can use the Sound modification screen in the Edit Menu Node dialog box to change the length of time before the next image displays on the screen, the next audio file plays, or the time-out path is triggered in the presentation. The current delay value displays in the Delay text box.

To change the delay value for the audio file in the Sound modification screen:

1. Enter a value in the Delay text box or select a value from the Delay drop-down list box.

Delay intervals range from 0.5 seconds to 300 seconds, as well as No Delay and Infinite Delay.

No Delay displays the next image, plays the next audio file, or triggers the time-out without any delay.

Infinite Delay waits for the viewer to make a selection before displaying the next image or playing the next audio file.

2. Click OK or Cancel.

OK closes the dialog box and sets the delay.

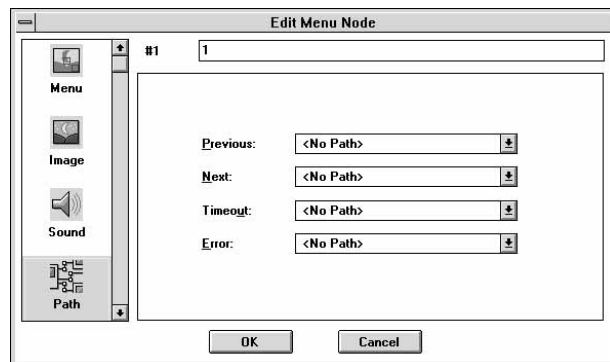
Cancel closes the dialog box and discards the delay change.

Menu Node Path Modification Screen

The Path modification screen from the Edit Menu Node dialog box allows you to make new path connections or change the destinations of paths associated with the selected node.

To display the Path modification screen, double-click the menu node in the document window and click the Path icon in the category list box.

Path modification screen for menu nodes



The node numbers or names for the Previous, Next, Time-out, and Error paths display in the respective drop-down list boxes. You can also use these list boxes to make new connections or to replace existing ones.

- **Previous** indicates which node displays when the Previous button is selected on the player remote control.
- **Next** indicates which node displays when the Next button is selected on the player remote control.
- **Time-out** indicates which node will display if the user does not make a menu selection in a predetermined amount of time.
- **Error** is the path to the node that displays if an error has been made when selecting a menu path.

To change a path or make a new connection:

1. Click the drop-down list box for the path that you want to change. A list of all nodes for the selected path displays.
2. Select the node number or name that you want as the new destination node. The path list box updates to display the new path number or name.

6: Modifying Nodes

3. Click OK or Cancel.

OK closes the dialog box and the updates the path.

Cancel closes the dialog box without updating the path.

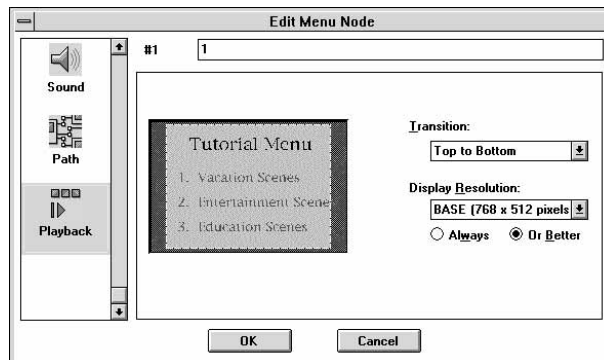
Menu Node Playback Modification Screen

The Playback modification screen from the Edit Menu Node dialog box allows you to change the way the player displays the image. You use this screen to set the transition for the way one image replaces the next image during your presentation and to set the display resolution.

When you make modifications to an image using the Playback modification screen, you are not actually modifying the image—you are only modifying the way the player projects the image on the screen.

To display the Playback modification screen, double-click the menu node in the document window and click the Playback icon from the category list box.

Playback modification screen
for menu nodes



The Playback modification screen contains the following text box, list boxes, and buttons:

- **Node name** text box lets you name the node.
- **Transition** displays a drop-down list box that allows you to select the way the next image replaces the current image.
- **Display Resolution** displays a drop-down list box of available resolutions for the image in the node.
 - **Always** option button allows the selected player to play back an image at the selected resolution at the normal speed of the player for that resolution.

- **Or Better** option button allows the selected player to play back an image at the highest possible resolution at the normal speed of the player for that resolution.
- **OK** closes the dialog box and applies the changes.
- **Cancel** closes the dialog box and discards the changes.

Setting the Transition

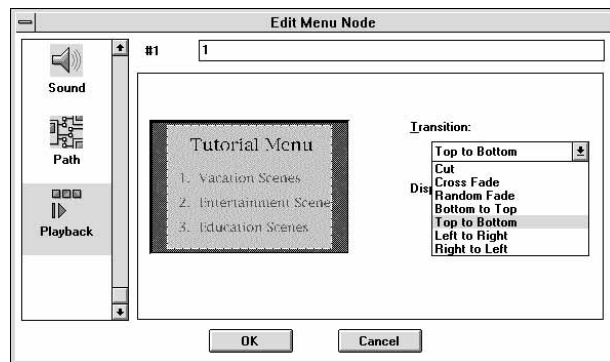
You use the Transition drop-down list box from the Playback modification screen to change the transition for the menu node image. The transition describes how the next image in your presentation replaces the currently displayed image.

NOTE: Not all player models support transition changes. Refer to your player manual for transitions supported by your player. Similarly, the Arrange-It software Preview Presentation may not display images using the selected transition if the player you selected does not support the transition.

To change the transition for the image displayed in the Playback modification screen:

1. Click the Transition drop-down list box and select a new transition from the list.
The currently selected transition appears highlighted in the list.

Playback modification
screen with Transition
drop-down list box



2. Click OK or Cancel.
OK closes the dialog box and applies the transition.
Cancel closes the dialog box and discards the change.

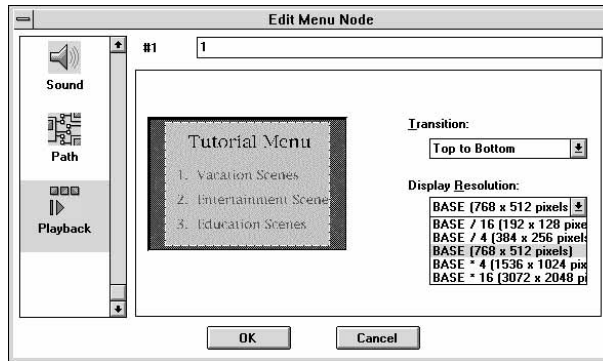
Setting the Display Resolution

You use the Display Resolution drop-down list box from the Playback modification screen to select the image resolution for the image in the menu node. When you select

6: Modifying Nodes

the display resolution, you must also click either the Always option button or the Or Better option button.

Playback modification screen with Display Resolution drop-down list box



The image resolution that you select from the Display Resolution drop-down list box should be based on the length of time it takes to read and display an image. Resolutions and the time to display the image at that resolution include:

- **BASE / 16 (192 x 128 pixels)** resolution (not yet supported by most players).
- **BASE / 4 (384 x 256 pixels)** resolution takes approximately two seconds.
- **BASE (768 x 512 pixels)** resolution takes approximately four seconds.
- **BASE * 4 (1536 x 1024 pixels)** resolution (not yet supported by most players).
- **BASE * 16 (3072 x 2048 pixels)** resolution (not yet supported by most players).

NOTE: On players that support these higher resolutions, as you increase the quality of the image resolution, you also increase the time it takes the image to be drawn on the screen. Conversely, as you decrease the time to displays an image, you also decrease the image quality.

To change the display resolution for the image displayed in the Playback screen:

1. Click the Display Resolution drop-down list box and select the desired resolution from the list.

The currently selected resolution appears highlighted in the list.

2. Click either the Always option button or the Or Better option button.
3. Click OK or Cancel.

OK closes the dialog box and applies the resolution change.

Cancel closes the dialog box and discards the change.

Editing Sequence Nodes

There are two categories of items that can be edited in a sequence node. Arrange-It software provides an editing screen for each category.

- **Image** modification screen allows you to make changes to the images and the way they display in the presentation.
- **Sound** modification screen allows you to edit audio files.

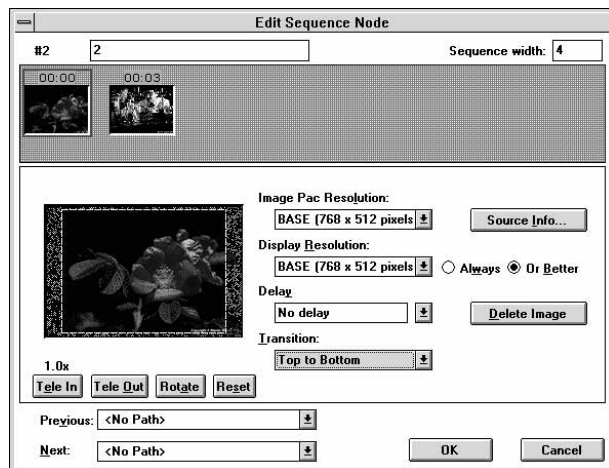
When you first open an Edit Sequence Node dialog box, either the Image modification screen or the Sound modification screen displays, depending on whether the first item in the sequence node is an image or an audio file.

Sequence Node Image Modification Screen

The Image modification screen from the Edit Sequence Node dialog box allows you to change the way the player displays the image. You use this screen to set the Image Pac resolution, display resolution, delay, and transition for the way one image replaces the next image during the presentation.

To edit an image in an Image modification screen, double-click a sequence node in the document window and select an image from the Image/Audio bar.

Image modification screen for sequence nodes



The Image modification screen contains the following text boxes, list boxes, and buttons:

- **Node name** text box lets you name the node.
- **Sequence width** text box allows you to select the maximum number of files in the sequence node that display in the document window without scrolling.

6: Modifying Nodes

- **Image/Audio bar** contains the images and/or audio files in the sequence node.
- **Image Preview** shows the file that you selected from the Image/Audio bar.

- **Tele In** reduces the size of the TV crop box and enlarges the image. The magnification number displays just above the Tele In button.

When you click Tele In to enlarge the size of your image, the TV crop box shows you how much of the perimeter of your image will be cropped for presentation in the Arrange-It software Emulate/Display window or on the player. The area inside the crop box indicates the maximum portion of the image that might appear on a television.

Not all players use the same zoom factors. Results may vary when you play back the image.

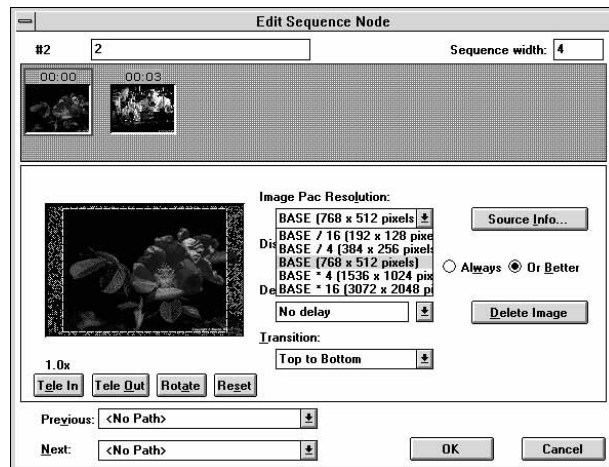
- **Tele Out** enlarges the size of the TV crop box and reduces the image. Not all players use the same zoom factors. Results may vary when you play back the image.
- **Rotate** rotates the image 90 degrees at a time.
- **Reset** resets the Tele In, Tele Out, and Rotate changes to the original settings.
- **Image Pac Resolution** displays a drop-down list box of Photo CD Image Pac resolutions that allows you to select the maximum resolution of the image that copies onto the Photo CD Portfolio disc.
- **Display Resolution** displays a drop-down list box of available resolutions in which you can display the image.
 - **Always** option button allows the player to play back an image at the selected resolution at the normal speed of the player for that resolution.
 - **Or Better** option button allows the selected player to play back an image at the highest possible resolution, at the normal speed of the player for that resolution.
- **Delay** provides a text box, as well as a drop-down list box of time intervals that allows you to reset the length of time before the next image or audio file plays.
- **Transition** displays a drop-down list box that allows you to select how the next image replaces the current image.
- **Source Info** displays the Source Information dialog box.
- **Delete Image** deletes the selected image.
- **Previous** drop-down list box displays the node names or numbers connected to the Previous path tab on the sequence node.

- **Next** drop-down list box displays the node names or numbers connected to the Next path tab on the sequence node.
- **OK** closes the dialog box and applies the changes.
- **Cancel** closes the dialog box and discards the changes.

Setting the Image Pac Resolution

You use the Image Pac Resolution drop-down list box in the Image modification screen to select the resolution used to copy images onto the Photo CD Portfolio disc.

Image modification screen
with Image Pac Resolution
drop-down list box



To select the Image Pac resolution for the image displayed in the Image modification screen:

1. Click the Image Pac Resolution list box and select a resolution from the list.
The currently selected resolution displays highlighted in the list.
2. Click OK or Cancel.
OK closes the dialog box and sets the resolution.
Cancel closes the dialog box and discards the change.

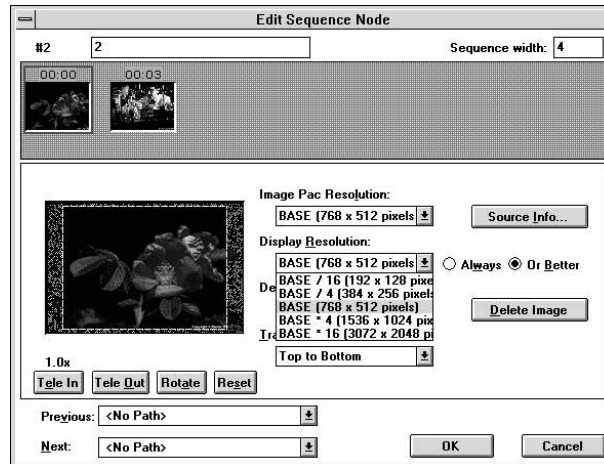
Setting the Display Resolution

You use the Display Resolution drop-down list box from the Image modification screen to select the image resolution for the image in the sequence node. When you select the

6: Modifying Nodes

display resolution, you must also click either the Always option button or the Or Better option button.

Image modification screen
with Display Resolution drop-
down list box



The image resolution that you select from the Display Resolution drop-down list box should be based on the length of time it takes to read and display an image. Resolutions and the time to display the image at that resolution include:

- **BASE / 16 (192 x 128 pixels)** resolution (not yet supported by most players).
- **BASE / 4 (384 x 256 pixels)** resolution takes approximately two seconds.
- **BASE (768 x 512 pixels)** resolution takes approximately four seconds.
- **BASE * 4 (1536 x 1024 pixels)** resolution (not yet supported by most players).
- **BASE * 16 (3072 x 2048 pixels)** resolution (not yet supported by most players).

NOTE: On players that support these higher resolutions, as you increase the quality of the image resolution, you also increase the time it takes the image to be drawn on the screen. Conversely, as you decrease the time to display an image, you also decrease the image quality.

To change the display resolution for the image displayed in the Image modification screen:

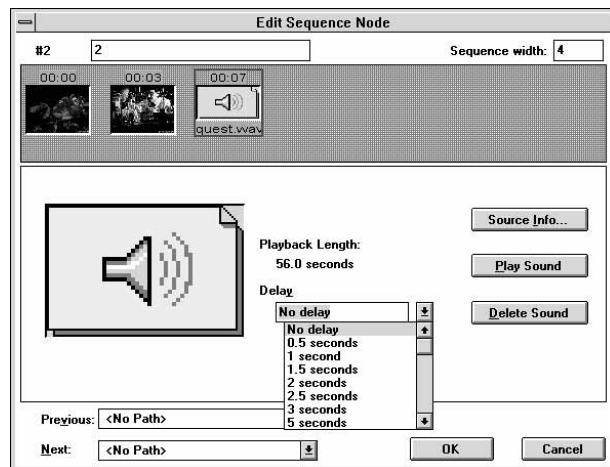
1. Click the Display Resolution drop-down list box and select the desired resolution from the list box.
The currently selected resolution appears highlighted in the list.
2. Click either the Always option button or the Or Better option button.

3. Click OK or Cancel.
OK closes the dialog box and sets the resolution.
Cancel closes the dialog box and discards the change.

Setting the Delay

You use Delay drop-down list box in the Image modification screen to change the length of time before the next image displays on the screen, the next audio file plays, or the time-out path is triggered in the presentation. The current delay value displays in the Delay text box.

Image modification screen
with Delay drop-down list box



To change the delay value for the image displayed in the Image modification screen:

1. Enter a value in the Delay text box or select a value from the Delay drop-down list box. Delay intervals range from 0.5 seconds to 300 seconds, as well as No Delay and Infinite Delay.
No Delay displays the next image, plays the next audio file, or triggers the time-out without any delay.
Infinite Delay waits for the viewer to make a selection before displaying the next image or playing the next audio file.
2. Click OK or Cancel.
OK closes the dialog box and sets the delay.
Cancel closes the dialog box and discards the delay change.

6: Modifying Nodes

Setting the Transition

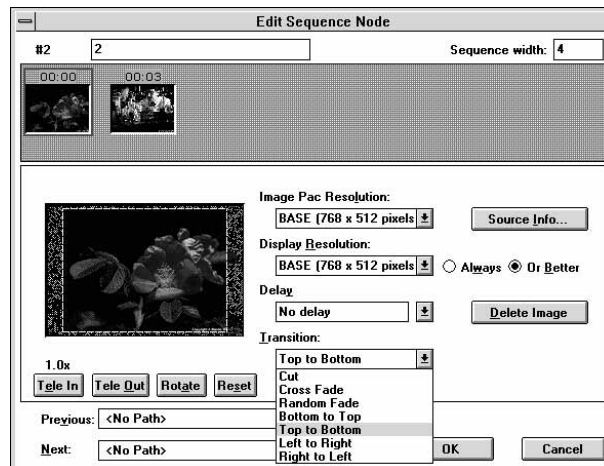
You use the Transition drop-down list box from the Image modification screen to change the transition for sequence node images. The transition describes how the next image in your presentation replaces the currently displayed image.

NOTE: Not all player models support transition changes. Refer to your player manual for transitions supported by your player. Similarly, the Arrange-It software Preview Presentation may not display images using the selected transition if the player you selected does not support the transition.

To change the transition for the image displayed in the Image modification screen:

1. Click the Transition drop-down list box and select a new transition from the list.
The currently selected transition appears highlighted in the list.

Image modification screen
with Transition drop-down
list box

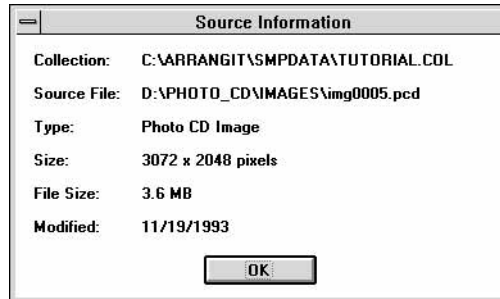


2. Click OK or Cancel.
OK closes the dialog box and applies the transition.
Cancel closes the dialog box and discards the change.

Viewing Source Information

To view information about the image displayed in the Image modification screen, click the Source Info button. The Source Information dialog box appears containing information about the image.

Source Information dialog box



Information shown in the dialog box includes:

- Collection from which the image was selected
- Source file
- Type of image
- Size of image (in pixels)
- File size
- Date the image was last modified

Click OK to close the Source Information dialog box and return to the Image modification screen.

Deleting an Image

To delete an image displayed in the Image modification screen:

1. Click the Delete Image button.

The image is deleted and the Image/Audio bar displays the altered sequence node.

NOTE: When only one image is left in a sequence node, the Delete Image button dims.

2. Click OK or Cancel.

OK closes the dialog box and deletes the image.

Cancel closes the dialog box and retains the image.

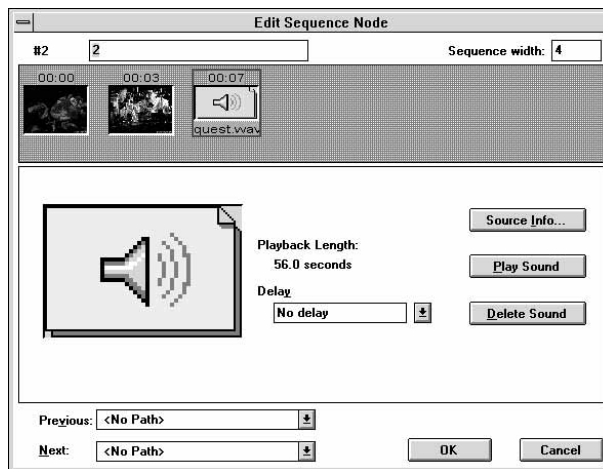
6: Modifying Nodes

Sequence Node Sound Modification Screen

The Sound modification screen from the Edit Sequence Node dialog box allows you to control the length of time before the next audio file plays, the next image displays on the screen, or the time-out path is triggered. The current value displays in the Delay text box.

To edit an audio file in the Sound modification screen, double-click a sequence node in the document window and select a sound file from the Image/Audio bar.

Sound modification screen for sequence nodes



The Sound modification screen contains the following text boxes, list boxes, and buttons:

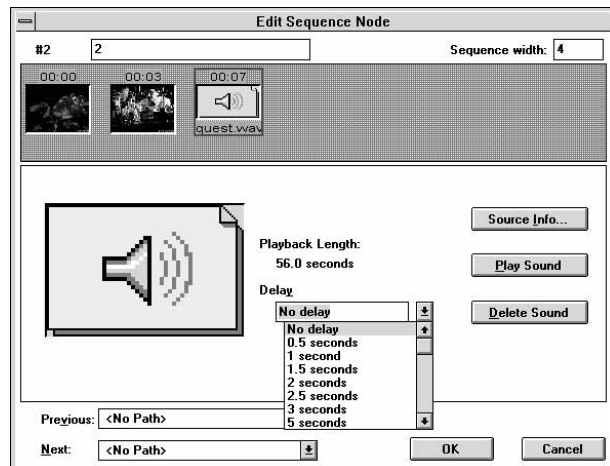
- **Node name** text box lets you name the node.
- **Sequence width** text box shows the maximum number of files in the sequence node that display in the document window without scrolling.
- **Playback Length** shows the length of the currently selected audio file.
- **Delay** provides a text box, as well as a drop-down list box that allows you to select the length of time before the next image displays or the next audio file plays.
- **Source Info** displays the Source Information dialog box.
- **Play Sound** plays the audio file.
- **Delete Sound** deletes the audio file.
- **Previous** drop-down list box displays the node names or numbers connected to the Previous path tab on the sequence node.

- **Next** drop-down list box displays the node names or numbers connected to the Next path tab on the sequence node.
- **OK** closes the dialog box and applies the changes.
- **Cancel** closes the dialog box and discards the changes.

Setting the Delay

You use the Delay drop-down list box in the Sound modification screen to change the length of time before the next image displays on the screen, the next audio file plays, or the time-out path is triggered in the presentation. The current delay value displays in the Delay text box

Sound modification screen
with Delay drop-down list box



To change the delay value for the sound file in the Sound modification screen:

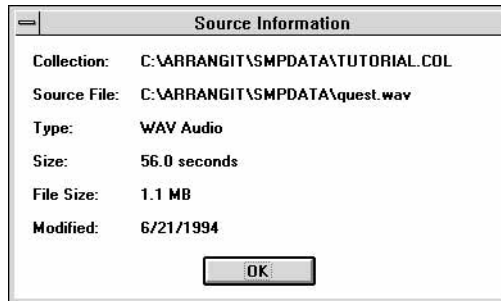
1. Enter a value in the Delay text box or select a value from the Delay drop-down list box. Delay intervals range from 0.5 seconds to 300 seconds, as well as No Delay and Infinite Delay.
No Delay displays the next image, plays the next audio file, or triggers the time-out without any delay.
Infinite Delay waits for the viewer to make a selection before displaying the next image or playing the next audio file.
2. Click OK or Cancel.
OK closes the dialog box and sets the delay.
Cancel closes the dialog box and discards the delay change.

6: Modifying Nodes

Viewing Source Information

To view information about the audio file in the Sound modification screen, click the Source Info button. The Source Information dialog box appears containing information about the audio file.

Source Information dialog box



Information shown in the dialog box includes:

- Collection from which the audio file was selected
- Source file
- Type of file (sound)
- Size (duration of the audio file in seconds)
- File size
- Date the audio file was last modified

Click OK to close the Source Information dialog box and return to the Sound modification screen.

Playing an Audio File

To play the audio file in the Sound modification screen, click the Play Sound button. You can play the entire audio file or click anywhere in the Sound modification screen to stop the playback.

Deleting an Audio File

To delete an audio file in the Sound modification screen:

1. Click the Delete Sound button.
The audio file is deleted from the Image/Audio bar.
2. Click OK or Cancel.
OK closes the dialog box and deletes the audio file.
Cancel closes the dialog box and retains the audio file.