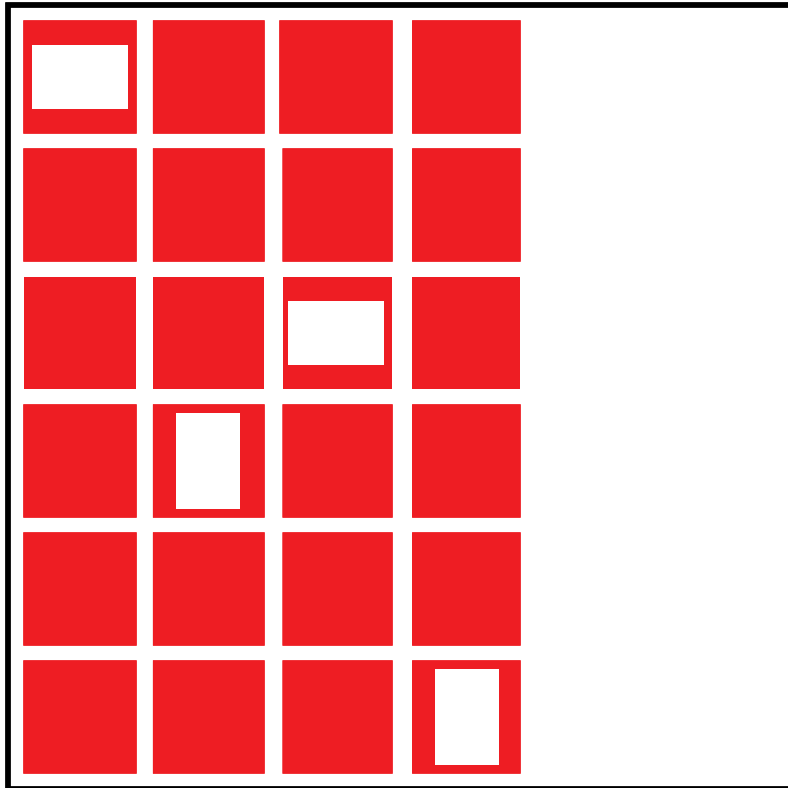


7: Making Global Modifications



7: Making Global Modifications

You use Global Modify from the Edit menu to edit multiple nodes or even all the nodes in your presentation. The Global Modify dialog box allows you to change specific values for each item on the modification screen. For example, if you only want to change the time-out path color on the Global Modify Path modification screen, you select the Apply check box for that item only. All unselected check box values remain unchanged.

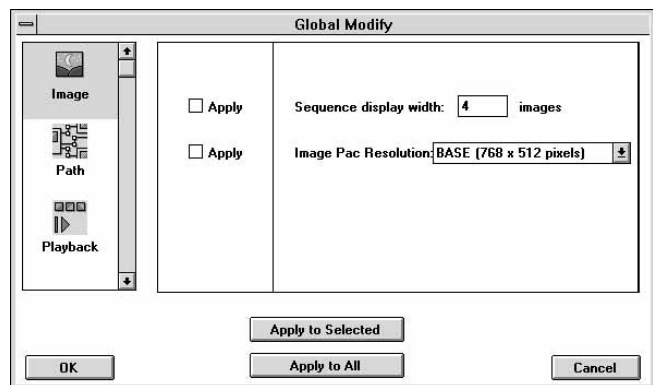
The Global Modify dialog box contains four editing screens:

- **Image** modification screen allows you to change the sequence display width and Image Pac resolution.
- **Path** modification screen allows you to change one or more path colors.
- **Playback** modification screen allows you to control the way images display on the player.
- **Delay** modification screen allows you to control the length of time an image is displayed on the screen and the delay after an audio file plays.

Global Modify Image Modification Screen

The Image modification screen from the Global Modify dialog box allows you to change the sequence display width and the Image Pac resolution.

Image modification screen
from Global Modify dialog box



The Image modification screen contains the following text box, check boxes, and buttons:

- **Sequence Display Width** allows you to select the maximum number of images or audio files that display in the document window without scrolling.

7: Making Global Modifications

- **Image Pac Resolution** displays a drop-down list box that allows you to select the maximum resolution of the image that will be copied onto the Photo CD Portfolio disc.
- **Apply to Selected** applies the changes to only the nodes that you selected before choosing Global Modify from the Node menu.
- **Apply to All** applies the changes to all nodes in the document.
- **OK** closes the dialog box and applies the changes.
- **Cancel** closes the dialog box and discards the changes.

Changing the Sequence Display Width

Although a large number of images and audio files can be added to a sequence node, you may want to limit the width of the sequence node in the document window. You use the Sequence Display Width text box to select the maximum number of files that display in the sequence node without scrolling. All the files in the sequence node can be viewed using the scroll bar at the bottom of the node.

To change the sequence display width:

1. Select the nodes in the document window that you want to change.
NOTE: If you want to change all the nodes in the document, you do not need to select any nodes.
2. Choose Global Modify from the Edit menu.
3. Click the Image icon in the category list box to display the Image modification screen.
4. Enter a new value in the Sequence Display Width text box.
NOTE: The sequence display width must be between 2 and 100.
5. Click one of the following:
 - Apply to Selected** applies the changes to only the selected sequence nodes.
 - Apply to All** applies the changes to all sequence nodes.
 - OK** closes the dialog box and applies the changes.
 - Cancel** closes the dialog box and discards the changes.

Setting Image Pac Resolution

You use the Image Pac Resolution drop-down list box to select the maximum Image Pac resolution used to copy images onto the final Photo CD Portfolio disc.

7: Making Global Modifications

To change the Image Pac resolution:

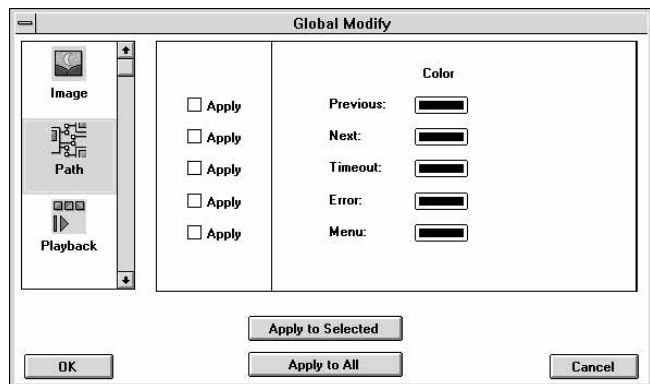
1. Select the nodes in the document window that you want to change.
NOTE: If you want to change all the nodes in the document, you do not need to select any nodes.
2. Choose Global Modify from the Edit menu.
3. Click the Image icon in the category list box to display the Image modification screen.
4. Click the Image Pac Resolution drop-down list box and select a resolution from the list.
5. Click one of the following:
Apply to Selected applies the changes to only the selected nodes.
Apply to All applies the changes to all sequence nodes.
OK closes the dialog box and applies the changes.
Cancel closes the dialog box and discards the changes.

Refer to “Menu Node Playback Modification Screen” and “Sequence Node Image Modification Screen” in Chapter 6 for a discussion of Image Pac resolutions.

Global Modify Path Modification Screen

The Path modification screen from the Global Modify dialog box allows you to set the color of the paths that originate from the selected nodes or from all nodes in the document.

Path modification screen from
Global Modify dialog box



7: Making Global Modifications

The Path modification screen contains the following check boxes and buttons:

- **Previous** indicates which node displays when the Previous button is selected on the player remote control.
- **Next** indicates which node displays when the Next button is selected on the player remote control.
- **Time-out** indicates which node will display if the user does not make a menu selection in a predetermined amount of time.
- **Error** is the path to the node that displays if an error has been made when selecting a menu path.
- **Menu** is used to create more menu selection paths.
- **Apply to Selected** applies the changes to only the selected nodes.
- **Apply to All** applies the changes to all nodes in the document.
- **OK** closes the dialog box and applies the changes that you made.
- **Cancel** closes this dialog box and discards the changes.

To make global color changes to paths:

1. Select the nodes in the document window that you want to change.
NOTE: If you want to change all nodes in the document, you do not need to select any nodes.
2. Choose Global Modify from the Edit menu.
3. Click the Path icon in the category list box to display the Path modification screen.
4. Change the path color.
 - Click the color box next to a path type that you want to change. The WINDOWS software Color dialog box appears.
 - Select a color from Basic Colors or Custom Colors.
 - Click OK to apply the path color or Cancel to leave the path color unchanged.If you click OK, the color box in the Path modification screen changes to the selected color and the Apply check box is automatically selected.
5. Click one of the following:
 - Apply to Selected** applies the changes to only the selected nodes.
 - Apply to All** applies the changes to all nodes in the document.

7: Making Global Modifications

OK closes the dialog box and applies the changes you made.

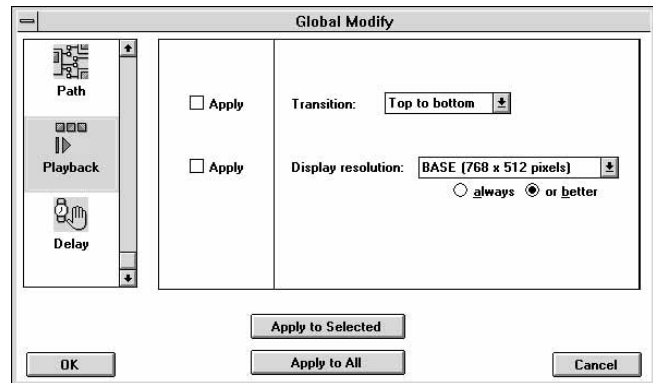
Cancel closes the dialog box and discards the changes.

NOTE: Changes made in the Global Modify Path screen affect nodes. You can select multiple nodes and change the color of their attached paths. You cannot select paths alone and change their color.

Global Modify Playback Modification Screen

The Playback modification screen in the Global Modify dialog box allows you to edit the way images display on the player.

Playback modification screen from Global Modify dialog box



The Playback screen contains the following list boxes and buttons:

- **Transition** displays a drop-down list box that allows you to select how the next image replaces the current image.
- **Display Resolution** displays a drop-down list box of available resolutions for the image in the node.
 - **Always** option button allows the player to always play back the selected resolution, even if it reads and displays faster than a nominal read and display at that resolution.
 - **Or Better** option button allows a higher resolution to be displayed that takes the same nominal amount of time, thereby ensuring the same timing even on a faster player.
- **Apply to Selected** applies the changes to only the selected nodes.

7: Making Global Modifications

- **Apply to All** applies the changes to all nodes in the document.
- **OK** closes the dialog box and applies the changes.
- **Cancel** closes the dialog box and discards the changes.

Setting the Transition

You use the Transition drop-down list box from the Playback modification screen to change the way the next image in your presentation replaces the current image.

NOTE: Not all player models support transition changes. Refer to your player manual for transitions supported by your player. Similarly, the Arrange-It software Preview Presentation may not display images using the selected transition if the player you selected does not support the transition.

To change the transition:

1. Select the nodes in the document window that you want to change.
NOTE: If you want to change all the nodes in the document, you do not need to select any nodes.
2. Choose Global Modify from the Edit menu.
3. Click the Playback icon in the category list box to display the Playback modification screen.
4. Click the Transition drop-down list box and select a new transition from the list. The currently selected transition appears highlighted in the list.
5. Click one of the following:
 - Apply to Selected** applies the changes to only the selected nodes.
 - Apply to All** applies the changes to all nodes in the document.
 - OK** closes the dialog box and applies the changes.
 - Cancel** closes the dialog box and discards the changes.

The new transition appears highlighted in the list box and the Apply check box is automatically selected. The presentation uses the new transition that you selected when moving from one image to the next image.

Setting Display Resolution

You use the Display Resolution drop-down list box from the Playback modification screen to select the resolution for the images in the nodes. When you select the display resolution, you must also click either the Always option button or the Or Better option button.

The image resolution that you select from the Display Resolution drop-down list box should be based on the length of time it takes to read and display an image.

Refer to “Menu Node Playback Modification Screen” in Chapter 6 for a discussion of the available resolutions and the time to display.

NOTE: On players that support higher resolutions, as you increase the quality of the image resolution, you also increase the time it takes for the image to be drawn on the screen. Conversely, as you decrease the time to display an image, you also decrease the image quality.

To change the display resolution:

1. Select the nodes in the document window that you want to change.
NOTE: If you want to change all the nodes in the document, you do not need to select any nodes.
2. Choose Global Modify from the Edit menu.
3. Click the Playback icon in the category list box to display the Playback modification screen.
4. Click the Display Resolution drop-down list box and select the desired resolution from the list box.
5. Click either the Always option button or the Or Better option button.
6. Click one of the following:

Apply to Selected applies the changes to only the selected nodes.

Apply to All applies the changes to all nodes in the document.

OK closes the dialog box and applies the changes.

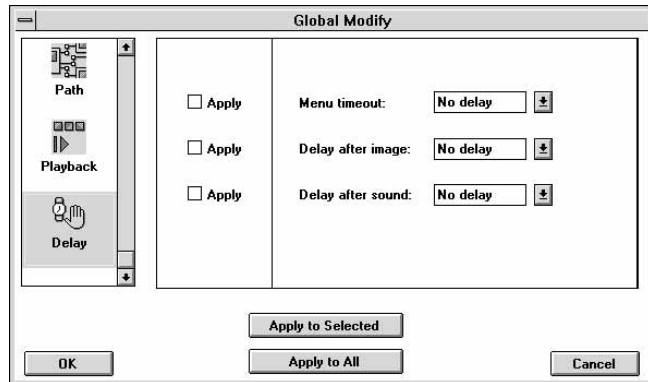
Cancel closes the dialog box and discards the changes.

7: Making Global Modifications

Global Modify Delay Modification Screen

The Delay modification screen from the Global Modify dialog box allows you to edit the length of time before the time-out path is triggered, the next image is displayed, or the next audio file is played in the presentation.

Delay modification screen
from Global Modify dialog box



The Delay modification screen contains the following list boxes and buttons:

- **Menu Time-out** controls the length of time a menu node displays before going to its time-out path.
- **Delay After Image** controls the length of delay after an image displays.
- **Delay After Sound** controls the length of time after an audio file plays.

To make global changes to the delay values for images and audio files in the presentation:

1. Select the nodes in the document window that you want to change.
NOTE: If you want to change all nodes in the document, you do not need to select any nodes.
2. Choose Global Modify from the Edit Menu.
3. Click the Delay icon in the category list box to display the Playback modification screen.
4. Enter a value in the Delay text box or select a value from the Delay drop-down list box. Delay intervals range from 0.5 seconds to 300 seconds, as well as No Delay and Infinite Delay.

Refer to “Menu Node Image Modification Screen” and “Sequence Node Sound Modification Screen” in Chapter 6 for a discussion of setting delay values.

7: Making Global Modifications

5. Click one of the following:

Apply to Selected applies the changes to only the selected nodes.

Apply to All applies the changes to all nodes in the document.

OK closes the dialog box and applies the changes.

Cancel closes the dialog box and discards the changes.