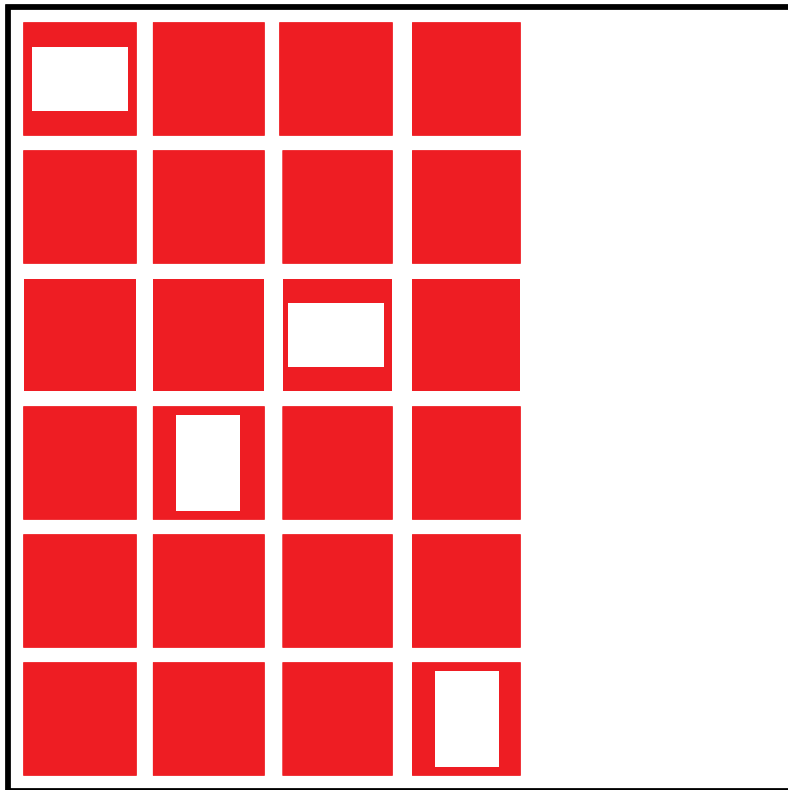


# *10: Using Other Editing Methods*



# 10: Using Other Editing Methods

Arrange-It software lets you create and edit documents without directly manipulating nodes and paths in the document window. You can import a PLAYLIST.PCD file from a Photo CD Portfolio disc or use the Text Outline Language.

## Import Playlist.PCD

The Import PLAYLIST.PCD command lets you use a presentation from a Photo CD Portfolio disc as the basis for creating a new presentation. When you import a playlist, you obtain

- A collection of the images in the presentation on the Photo CD Portfolio disc. Importing audio files with the Import PLAYLIST.PCD command is not supported in Arrange-It software Version 1.0.
- The completed Arrange-It software presentation document that is equivalent to the Photo CD Portfolio disc. You can play the presentation by choosing Preview Presentation from the Script menu, or by making modifications to create a new presentation.

To import a playlist:

1. Insert a Photo CD Portfolio disc into the CD-ROM drive.
2. Choose Import PLAYLIST.PCD from the File menu.  
A dialog box appears asking you to locate PLAYLIST.PCD.
3. Select the PLAYLIST.PCD file from the `photo_cd` directory on the Photo CD Portfolio disc.
4. Click OK.  
A message box appears alerting you that importing audio snippets is not supported by Arrange-It software Version 1.0.
5. Click OK to close the message box.  
A dialog box appears asking you to choose a name for the new collection file. You also use this dialog box to specify where you want to create the new collection containing the images from the Photo CD Portfolio disc.
6. Select the drive and directory where you want to save the collection.

## 10: Using Other Editing Methods

7. Enter a **filename** for the collection in the File Name text box.
8. Click OK.

A progress indicator appears while the images are copied from the CD-ROM drive into a collection.

The import process takes a few minutes. When it is complete, the imported presentation displays in the document window.

### Text Outline Language

Instead of creating a document in the document window, you can use text to describe the document. Since the Text Outline Language does not allow you to make all the modifications to your document that you can in the document window, you may want to continue to modify your document in the document window after the Text Outline Language document has been successfully built.

### Legal Terms and Values

The following guidelines must be followed when using the Text Outline Language:

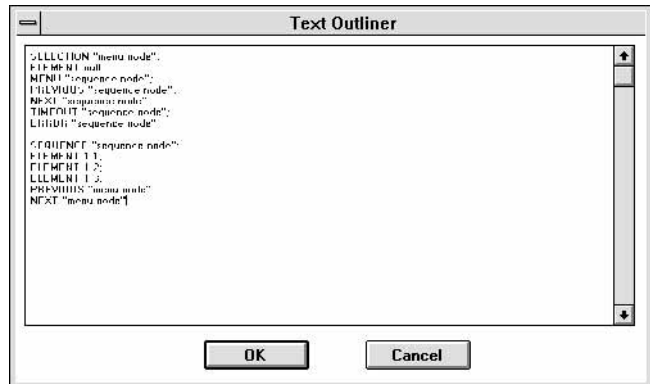
- Legal numbers are 1 through 32767.
- Legal names can contain up to 24 characters.
- Legal line separators include space, tab, return, or comma.
- SELECTION defines a menu node.
- SEQUENCE defines a sequence node.
- ELEMENT defines an element, followed by location information of the element within a collection.
- NULL defines a Null image in a node.
- MENU defines a menu path.
- PREVIOUS defines a Previous path.
- NEXT defines a Next path.
- TIMEOUT defines a Time-out path.
- ERROR defines an Error path.

### Creating a Document

To create an Arrange-It software document using the Text Outline Language, you enter a series of single-line descriptive statements in the Text Outliner dialog box. These statements are used to define menu nodes, sequence nodes, and paths for both kinds of nodes.

Each statement begins with a term that specifies what is being defined and ends with a semicolon. A final document script appears something like the following sample.

Text Outliner dialog box showing sample document script



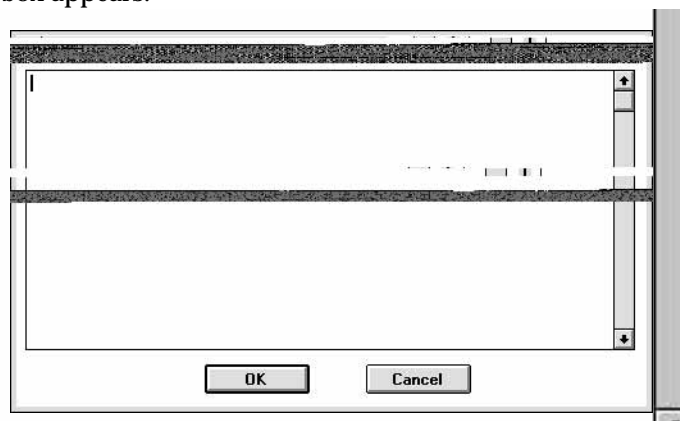
### Defining a Menu Node

To define a menu node using the Text Outline Language:

1. Choose Text Outliner from the File menu.

The Text Outliner dialog box appears.

Text Outliner dialog box



## 10: Using Other Editing Methods

2. Enter *SELECTION* followed by a space, the menu node ID in quotation marks, and a semicolon. Press ENTER.

**EXAMPLE:** SELECTION "menu node" ;

3. Assign an image or an sound to the menu node.

- Enter *ELEMENT* followed by a space and one of the following:

If the image is from a collection, enter *Collection ID* in quotation marks, followed by a space, the image number within the collection, and a semicolon. The Collection ID is a number or name that you assign to an existing collection.

**EXAMPLE:** ELEMENT "Collection ID" 001 ;

If the image is a Null image, enter *null* followed by a semicolon.

**EXAMPLE:** ELEMENT null ;

- Press ENTER.

4. Repeat Step 3 for each element that you want to define.

A limit of one image and one (optional) sound file can be contained within the menu node. If more than one image and one sound file is defined, the Text Outline Language uses your last defined values. If you do not define an image, the Text Outline Language uses the Null image as the default value.

5. Define a menu path for each menu node.

- Enter *MENU* followed by a space, the destination node ID in quotation marks, and a semicolon. Press ENTER.

**EXAMPLE:** MENU "sequence node" ;

- Define the Previous, Next, Time-out, and Error paths for the menu node.

- Enter the path type followed by a space, the node ID for the path destination in quotation marks, and a semicolon. Press ENTER.

**EXAMPLE:** PREVIOUS "sequence node" ;  
NEXT "sequence node" ;  
TIMEOUT "sequence node" ;  
ERROR "sequence node" ;

### Defining a Sequence Node

You define sequence nodes in the Text Outliner dialog box just as you define menu nodes.

## 10: Using Other Editing Methods

To define a sequence node for the sample document started in “Defining a Menu Node” earlier in this section:

1. Enter *SEQUENCE* followed by a space, the node ID in quotation marks, and a semicolon. Press ENTER.

**EXAMPLE:**    `SEQUENCE "sequence node";`

2. Assign the first image or sound file in the sequence node.

There is no limit to the number of images and sound files a sequence node can contain.

- Enter *ELEMENT* followed by a space and one of the following:

If the image is from a collection, enter *Collection ID* followed by a space, the image number within the collection, and a semicolon. The Collection ID is a number or name that you assign to an existing collection.

**EXAMPLE:**    `ELEMENT 1 1;`  
                  `ELEMENT 1 2;`  
                  `ELEMENT 1 3;`

If the image is a Null image, enter *null* followed by a semicolon.

**EXAMPLE:**    `ELEMENT null;`

- Press ENTER.

3. Repeat Step 2 for each element that you want to define.
4. Enter the path type followed by a space, the node ID for the path destination in quotation marks, and a semicolon. Press ENTER.

**EXAMPLE:**    `PREVIOUS "menu node";`  
                  `NEXT "menu node";`

5. Repeat Step 4 for each path type.

### Completing a Document

When you finish defining menu nodes and sequence nodes, you need to do the following to complete your Text Outline Language Document:

1. Click OK in the Text Outliner dialog box.

The text you wrote is built and converted to a graphical representation. If the text contains syntax or logic errors, an error message box appears with the first error.

## 10: Using Other Editing Methods

2. Correct any errors.

If no errors exist, Arrange-It software asks you to assign the actual collection names to the collection names that you created using the Text Outline Language.

3. Click OK.

Refer to “Verifying the Document” and “Correcting Errors” in Chapter 9 for more information on correcting errors.