



# Preface

Visual Net Supervisor is an graphical network monitoring tool that initiates both visual and audible alarms when monitored network elements do not respond to polling. Visual Net Supervisor will even notify you remotely by, alphanumeric pager, or e-mail.

Visual Net Supervisor will work with any 32-bit TCP/IP stack, such as those bundled with Windows 95 or Windows NT. In addition, you do not need any special training to configure Visual Net Supervisor and start monitoring your networks.

Available for Intel, and MIPS platforms, you can use Visual Net Supervisor effectively in any network environment. It provides both a low-cost solution for small networks and a simplified tool to complement the more extensive network management systems found in large networks.

Visual Net Supervisor also facilitates remote support and diagnosis by providing easy access to all network elements.

# Conventions Used in this Manual

We have used a few conventions in the manual in order to help keep explanations clear. Certain generic terms (such as eMail) are used to consistently indicate specific things (i.e., host names) throughout the manual. The following table identifies these conventions:

<b>Generic Term</b>	<b>Examples</b>	<b>Meaning within this Manual</b>
host.domain	host.domain idefix.insys.fr	Fully qualified domain name
domain	domain insys.fr sales.insys.fr	Partial domain
user@domain	user@domain AlexandreD@insys.fr	E-mail address using partial domain name ( <i>i.e.</i> host name excluded. We call this host name hiding.)

# Questions and Comments

If you can't find an answer to a question in the manual, check the FAQ located on our web site at <http://www.insys.fr> or send E-mail to

`support-vns@insys.fr`

To suggest improvements to this manual, send E-mail to :

`vns@insys.fr`

Note: Copies of this manual can be obtained by anonymous FTP to [ftp.insys.fr](ftp://insys.fr) or from the web site at <http://www.insys.fr>.

A detailed table of contents follow to help you find coverage of specific topics. We hope you enjoy using Visual Net Supervisor and look forward to your feedback.

# Requirements

This program requires Microsoft Windows NT or Microsoft Windows 95 with the TCP/IP stack. (It works best on Windows NT).

This program is designed to work on any Winsock DLL, however it works BEST on the Microsoft TCP/IP 32 stack that comes with Windows NT 3.51 and later)

## **Operating system**

Windows NT 3.51

Windows NT 4.0

Windows 95

## **Stack**

Microsoft TCP/IP

Microsoft TCP/IP

Microsoft TCP/IP

# Legal Notices

The Visual Net Supervisor software is copyright 1996 INSYS, Inc. All rights reserved.

The Visual Net Supervisor documentation is copyright c 1996 INSYS, Inc. All rights reserved. No part of this documentation may be reproduced or transmitted in any form or by any means, electronic or mechanical, including photocopying, recording, or information storage and retrieval systems, for any purpose other than personal use, without the express written permission of INSYS, Inc.

## Trademarks

Many of the designations used by manufacturers and sellers to distinguish their products are claimed as trademarks. Where those designations appear in this documentation, and INSYS was aware of a trademark claim, the designations have been printed in initial caps or all caps.

Visual Net Supervisor is trademark of INSYS, Inc.

THIS SOFTWARE IS PROVIDED "AS IS" AND ANY EXPRESS OR IMPLIED WARRANTIES, INCLUDING, BUT NOT LIMITED TO, THE IMPLIED WARRANTIES OF MERCHANTABILITY AND FITNESS FOR A PARTICULAR PURPOSE ARE DISCLAIMED.

IN NO EVENT SHALL SOFTWARE.COM BE LIABLE FOR ANY DIRECT, INDIRECT, INCIDENTAL, SPECIAL, EXEMPLARY, OR CONSEQUENTIAL DAMAGES (INCLUDING, BUT NOT LIMITED TO, PROCUREMENT OF SUBSTITUTE GOODS OR SERVICES; LOSS OF USE, DATA, OR PROFITS; OR BUSINESS INTERRUPTION) HOWEVER CAUSED AND ON ANY THEORY OF LIABILITY, WHETHER IN CONTRACT, STRICT LIABILITY, OR TORT (INCLUDING NEGLIGENCE OR OTHERWISE) ARISING IN ANY WAY OUT OF THE USE OF THIS SOFTWARE, EVEN IF ADVISED OF THE POSSIBILITY OF SUCH DAMAGE.

# Quick Start

[Legal Notices](#)

[Setting up your Workstation](#)

# Setting up your Workstation

This chapters helps you up your workstation to run Visual Net Supervisor. The setup program sets up your Visual Net Supervisor file, install the sample file on a drive, and creates program icons.

[Before You Set Up](#)

[Setting Up under Windows 95 and NT](#)



# Before You Set Up

You only need to read the information in this section if your workstation does not run TCP/IP services. For TCP/IP to work on your computer, it must be configured with IP addresses, subnet masks, and default gateway for each network adapter on the computer. TCP/IP can be configured in one of two ways:

- Automatically, if there is a Dynamic Host Configuration Protocol (DHCP) server on your internetwork.
- Manually, if there is no DHCP server, or if you are configuring a Windows NT Server computer to be a DHCP server.

Note See the Installing and Configuring Microsoft TCP/IP in the TCPIP.HLP help file.  
The settings take effect after you restart the computer.

# Setting Up under Windows 95 and NT

To set up your workstation :

1. Start Windows 95, or Windows NT :
  - a. In Program Manager, choose File / Run
  - b. In the Command Line entry field, type the following :  
*path:\setup*  
where path is the local floppy disk location. For example *a:\setup*
  - c. choose OK
2. Select the directory to install the Visual Net Supervisor software.
  1. For example choose *C:\VNS*
3. Follow the on screen instructions to complete workstation setup.
4. See README.TXT in the installation directory for important, last-minute additions to the Visual Net Supervisor documentation.

## How to run Visual Net Supervisor

To run Visual Net Supervisor :

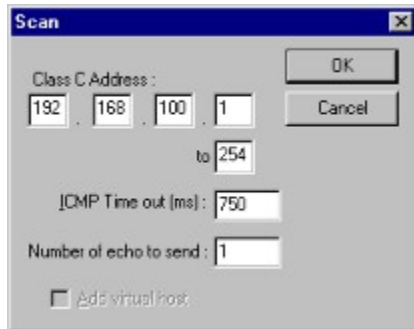
Click on the Visual Net Supervisor Icon in the program group

# **Guided Tour**

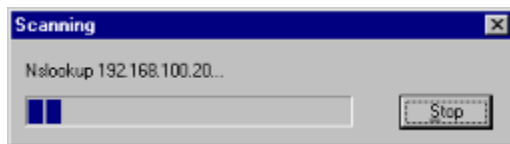
# Scan your own network

This section provides instructions for using the scan function.

- Choose Network, Scan in the Visual Net Supervisor menu.
- The dialog box will appear with your own IP address for example 192.168.100.[1-254]



- Click on the OK button, to start the scanning

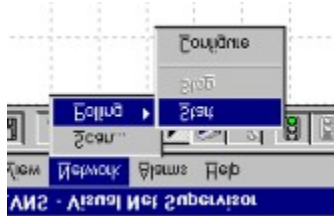


The scan feature automatically detects and displays icons for the systems in your network. You specify a range of C class addresses to be scanned, and Visual Net Supervisor polls each address. When Visual Net Supervisor can find an active host if the ICMP service is running, it creates :

- an icon with an unknown type
- adds the network services with the monitor property (such as ICMP, TCP/ECHO, FTP, SMTP, NTTP, POP3, WWW).

# Ready to poll

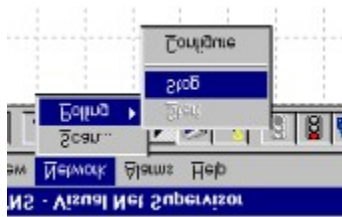
Push the start button or choose Start in the Network menu (*figure 1*)



*figure 1*

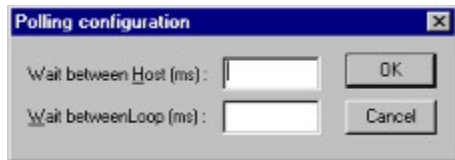
This section provides instructions for using the pool function. Choose Network, Pool in the Visual Net Supervisor menu.

Now stop push the stop button or choose stop in the Network menu (*figure 2*)



*figure 2*

# Polling Configuration



Visual Net Supervisor polls each monitored host in the network area, the pool engine wait for the **wait time between host** and after a complete cycle wait for the **wait between Loop**

## **For this item**

Wait between Host (ms)

Wait between Loop (ms)

## **Do this**

A wait time between host of 5000 milliseconds is usually valid.

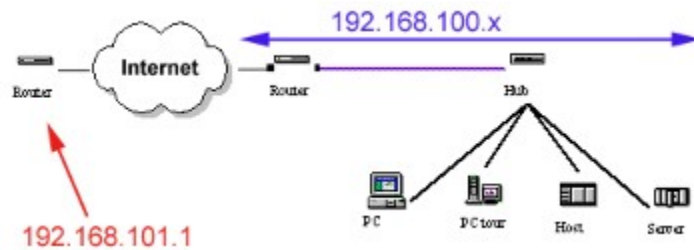
A wait time between loop of 10000 milliseconds is usually valid.

## *Note*

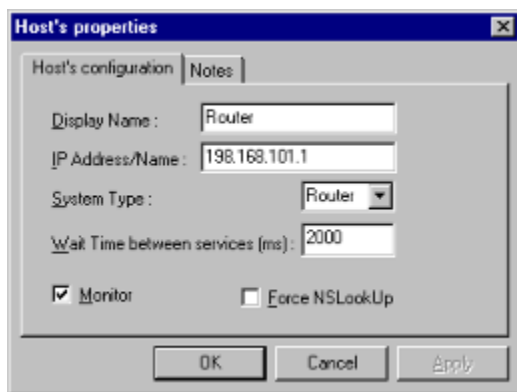
*Use the wait values to limit the Visual Net Supervisor overhead on your network.*

# Add a specific host

Now, you can add a specific host for example which can not be reach your class C IP address.  
For example



We add the specific host router 192.168.101.1



Use this dialog box to changes the host's parameters.

## **For this item**

## **Do this**

Display Name

Enter the display name (for example, Router)

IP Address/Name

Enter the IP Address or host's name (for example, 127.0.0.1 or localhost, or www.insys.fr)

System type

Choose one of the system type (none, host, server, vax, router, hub, printer, workstation)

Wait Time between services (ms)

Use this value to limited the VNS overhead on your host.

Monitor

If the monitor is disabled, VNS does not poll any services of this station event if there are monitored.  
If the monitor is enabled, VNS do pool any monitored services of this station

Force NSLookUp

When VNS poll this host, it try to resolve the host name. If look up failed VNS call the union of alarm set for each services.





# Design your network map

Now you will learn how to design your network map.

# Mouse commands

Left button click

Right button click

Left button double-click

Control key + left button click

# Left button click

You can use left button click :

- on any object *to select it.*

- on client area *to select more than one object*

( left button click on client area and moving over objects while left button is down ).

# Right button click

You can use right button click :

- on client area *to create a new host* ( Cf. picture 1 ).
- on any object *to modify host's characteristics* ( Cf. picture 2 ).

# Left button double-click

You can use left button double-click on any host to *display information about services*.  
( Cf. picture 6 ).

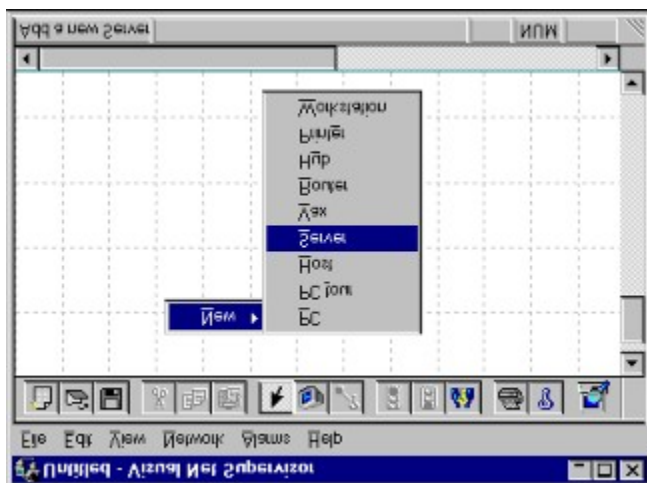
# Control key + left button click

You can use control key + left button click *to clone an existing object.*

# Main design functions

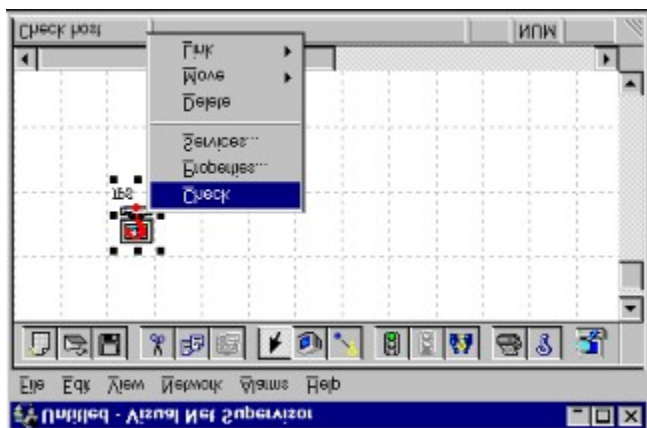


You can create a new host by using right button click on client area.  
Now, you can choose a specific host amid menu items.



Picture 1.

You can modify host's characteristics by using right button click on new object.

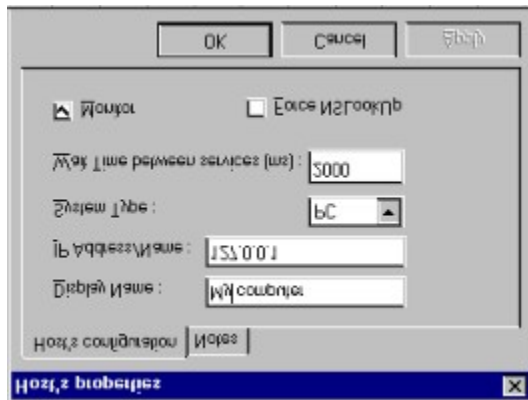


Picture 2.

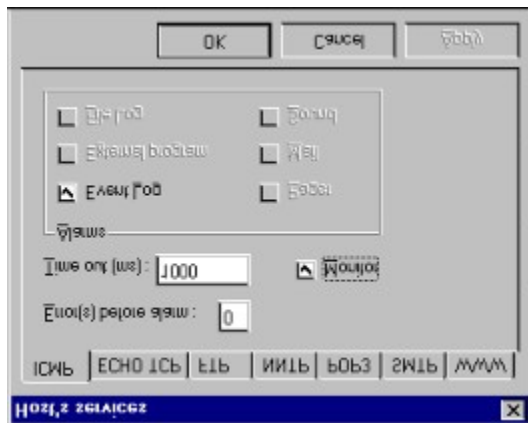
# Host menu commands

**Check** Allow you to check services of selected host.

**Properties** Display properties dialog box.



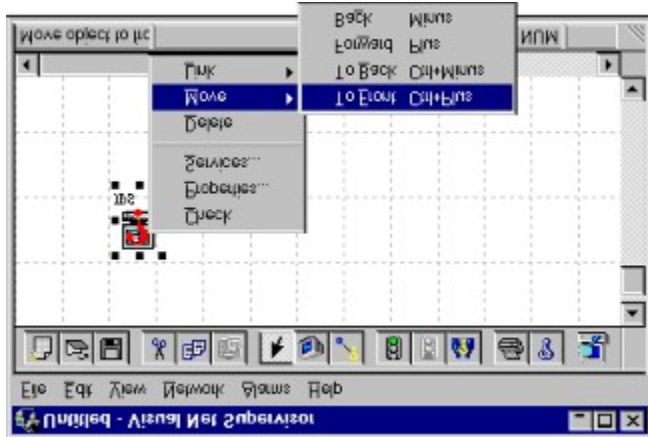
**Services** Display services dialog box.



**Delete** Delete selected object.

You can define overlay for each host or OLE object.



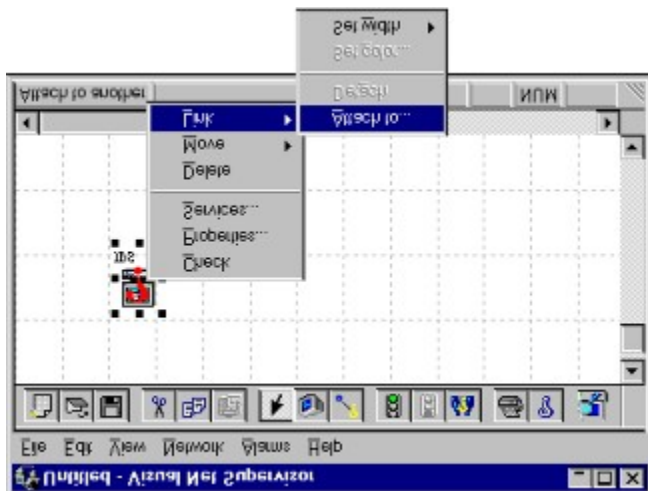


Picture 3.

#### MOVE POP UP MENU COMMANDS

**Move** Cf. pop up menu on picture 3.

You can attach an object to another by choosing *Attach to* item.  
For each link, you can set color and width.

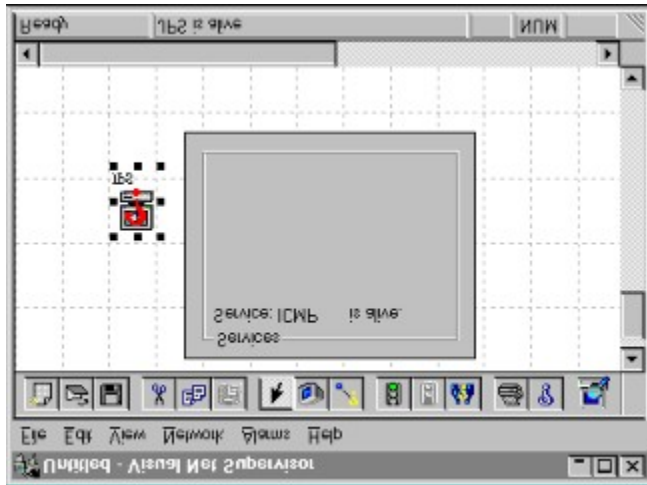


Picture 4.

#### LINK POP UP MENU COMMANDS

- Attach to** Create a link to another object.
- Detach** Delete current link to another object.
- Set color** Display color dialog box to set color of link.
- Set width** Display pop up menu to choose width of link in pixels.

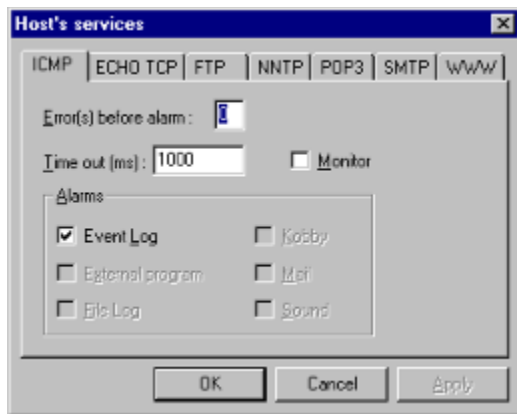
You can display information about services by using left button double-click on selected host.



Picture 6.

# Services

# ICMP



Use this dialog box to changes host's parameters.

## **For this item**

## **Do this**

Event Log

Use this check box to log alarm (like alarm or warning) event to the Windows NT Event Viewer

External Program

Use this check box to launch an external program when an alarm event occurs

File Log

Use this check box to log alarm (like alarm or warning) event to a file.

Pagger

Use this check box to send pager message when en alarm event occur

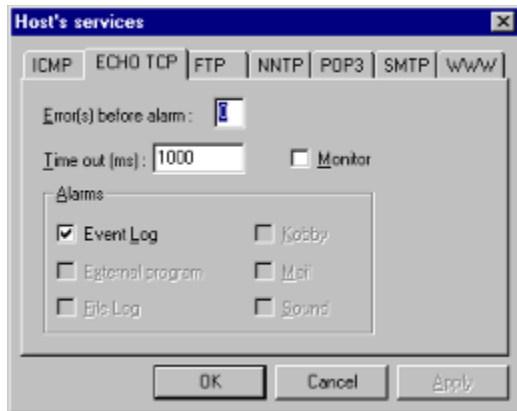
Mail

Use this check box to send a email message when en alarm event occur

Sound

Use this check box to play a sound when en alarm event occur

# ECHO TCP



Use this dialog box to change host's Echo TCP parameters

When you have finished setting error(s) before alarm, time out and Alarms , click OK to confirm your choices and close the dialog box, or click Cancel to disregard all changes and exit.

**For this item**

**Do this**

Error(s) before alarm

An alarm is send when the station has missed n pools. An alarm have a time to live preset to an half hours.

Time out (ms)

Monitor

Use this check box to monitor the service.

Event Log

Use this check box to write alarm event (like alarm or warning) to the Windows NT Event Viewer

External Program

Use this check box to launch an external program when en alarm event occur

File Log

Use this check box to write alarm event (like alarm or warning) to a log file.

Pagger

Use this check box to send pager message when en alarm event occur

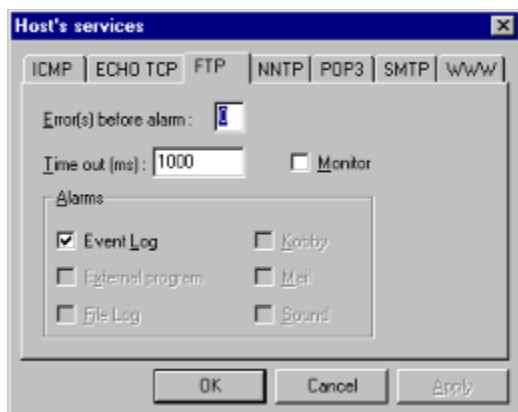
Mail

Use this check box to send a mail message when en alarm event occur

Sound

Use this check box to play a sound file when en alarm event occur

# FTP



Use this dialog box to changes the host's FTP services parameters

When you have finished setting sound file name, click OK to confirm your choices and close the dialog box, or click Cancel to disregard all changes and exit.

## **For this item**

## **Do this**

Error(s) before alarm

Time out (ms)

Monitor

Event Log

External Program

File Log

Pager

Mail

Sound

Use this check box to this service.

Use this check box to write alarm event (like alarm or warning) to the Windows NT Event Viewer

Use this check box to launch an external program when en alarm event occur

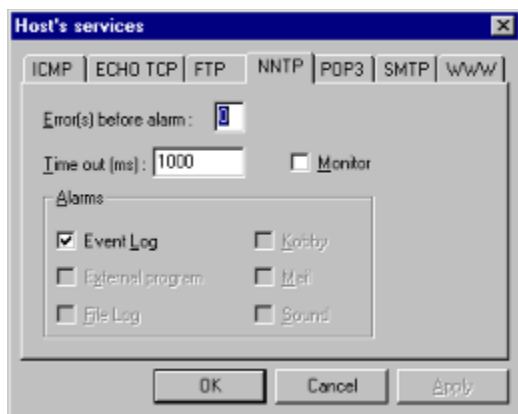
Use this check box to write alarm event (like alarm or warning) to a log file.

Use this check box to send pager message when en alarm event occur

Use this check box to send a mail message when en alarm event occur

Use this check box to play a sound file when en alarm event occur

# NNTP



Use this dialog box to changes the host's NNTP services parameters

When you have finished setting sound file name, click OK to confirm your choices and close the dialog box, or click Cancel to disregard all changes and exit.

## **For this item**

## **Do this**

Error(s) before alarm

Time out (ms)

Monitor

Use this check box to this service.

Event Log

Use this check box to write alarm event (like alarm or warning) to the Windows NT Event Viewer

External Program

Use this check box to launch an external program when en alarm event occur

File Log

Use this check box to write alarm event (like alarm or warning) to a log file.

Pagger

Use this check box to send pager message when en alarm event occur

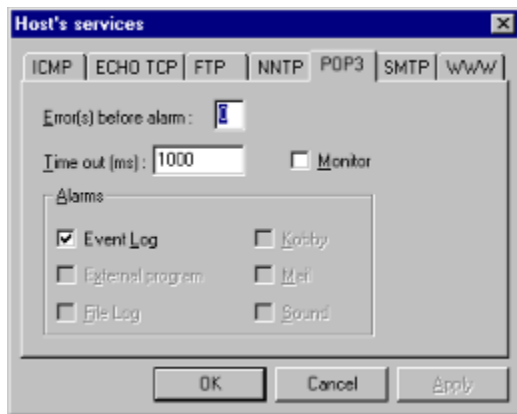
Mail

Use this check box to send a mail message when en alarm event occur

Sound

Use this check box to play a sound file when en alarm event occur

# POP 3



Use this dialog box to changes the host's POP3 service parameters

When you have finished setting error(s) before alarm, time out and Alarms , click OK to confirm your choices and close the dialog box, or click Cancel to disregard all changes and exit.

## **For this item**

## **Do this**

Error(s) before alarm

This parameter enable

Time out (ms)

Monitor

Event Log

Use this check box to write alarm event (like alarm or warning) to the Windows NT Event Viewer

External Program

Use this check box to launch an external program when en alarm event occur

File Log

Use this check box to write alarm event (like alarm or warning) to a log file.

Pagger

Use this check box to send pager message when en alarm event occur

Mail

Use this check box to send a mail message when en alarm event occur

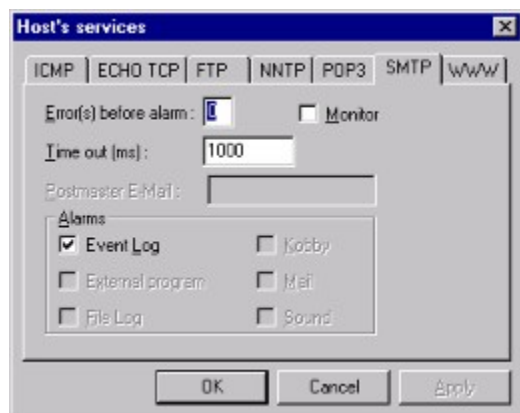
Sound

Use this check box to play a sound file when en alarm event occur





# SMTP



Use this dialog box to changes the host's SMTP service parameters

When you have finished setting error(s) before alarm, time out and Alarms , click OK to confirm your choices and close the dialog box, or click Cancel to disregard all changes and exit.

## **For this item**

## **Do this**

Error(s) before alarm

Time out (ms)

Monitor

Event Log

Use this check box to write alarm event (like alarm or warning) to the Windows NT Event Viewer

External Program

Use this check box to launch an external program when en alarm event occur

File Log

Use this check box to write alarm event (like alarm or warning) to a log file.

Kobby

Use this check box to send pager message when en alarm event occur

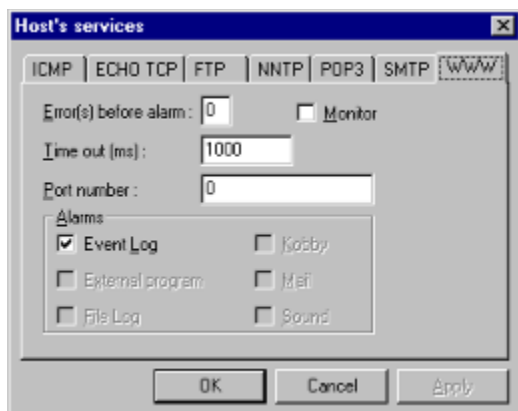
Mail

Use this check box to send a mail message when en alarm event occur

Sound

Use this check box to play a sound file when en alarm event occur

# WWW



Use this dialog box to changes the host's WWW service parameters

When you have finished setting error(s) before alarm, time out and Alarms , click OK to confirm your choices and close the dialog box, or click Cancel to disregard all changes and exit.

## **For this item**

## **Do this**

Error(s) before alarm

Time out (ms)

Monitor

Event Log

Use this check box to write alarm event (like alarm or warning) to the Windows NT Event Viewer

External Program

Use this check box to launch an external program when en alarm event occur

File Log

Use this check box to write alarm event (like alarm or warning) to a log file.

Kobby

Use this check box to send pager message when en alarm event occur

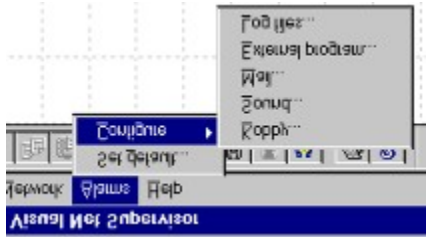
Mail

Use this check box to send a mail message when en alarm event occur

Sound

Use this check box to play a sound file when en alarm event occur

# **Alarm configuration**



When the network element does not respond to pooling, Visual Net Supervisor can send notification event via :

- [Pager](#)
- [Sound](#)
- [Mail](#)
- [External program](#)
- [Log files](#)
- [Event Log](#)

# Sound Alarm



Use this dialog box to open a sound file name.

- If you specify “Loop Infinte,” when an error occur Visual Net Supervisor play the sound file infinite. You must press the stop pooling button to stop the alarm.
- If you press the test button, Visual Net Supervisor play the sound file that you choose in the space to type the name of the file.

When you have finished setting sound file name, click OK to confirm your choices and close the dialog box, or click Cancel to disregard all changes and exit.

## **For this item**

Sound file (WAV)

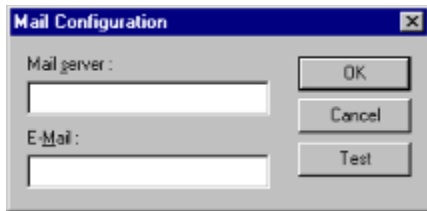
Loop infinite

## **Do this**

Enter a wav file name (for example, C:\VNS\DOWN.WAV)

Play the sound file infinity

# Mail



Use this dialog box to specify your mail SMTP server and to register e-mail address or an administrator e-mail address.

When you have finished setting Identity preferences, click OK to confirm your choices and close the dialog box, or click Cancel to disregard all changes and exit, or click Test to send a test message.

## **For this item**

Outgoing Mail (SMTP) Server

e-mail

## **Do this**

Enter the host name of the server. If you do not know the name of your SMTP server, ask your service provider or system administrator.

Enter your e-mail address (for example, vns@insys.fr).

# Pager



Use this dialog box to specify the pager properties

## **For this item**

Prefix

Receiver Id

Call moderator

Baud Rate

Port

Modem initialization string

Flow control

Frequency

## **Do this**

Enter your prefix; for example 0,

Enter your kobby pager id

Enter the max time between calls.

Enter the baud rate

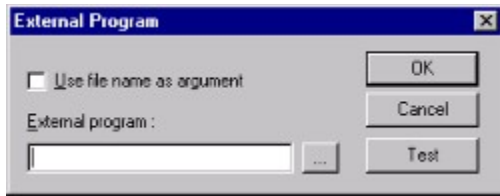
Enter the port number

Enter the modem initialization string; for example ATZ

Choose hardware or none flow control (none is recommended)

Choose Pulse or Tone frequency

# Call External Program



Use this dialog box to set the external program parameters

- If you specify “Use file name as argument,” when an error occur Visual Net Supervisor launch the external program and add a file temporary name to the command line. The file contains the error messages (for example if you specify “ myexternal.exe ”, Visual Net supervisor launch “ myexternal.exe c:\temp\vns56.tmp ”).
- If you press the test button, Visual Net Supervisor launch the external program file than you choose in the space to type the name of the file.

When you have finished setting sound file name, click OK to confirm your choices and close the dialog box, or click Cancel to disregard all changes and exit.

## **For this item**

## **Do this**

External program

Enter a program file name (for example, C:\winnt\system32\cmd.exe).

- **For example** (Use file name as argument unchecked)

## **For this sample**

## **Do this**

External program

C:\WINNT\system32\cmd.exe /C C:\VNS\external.bat

Use file name as argument

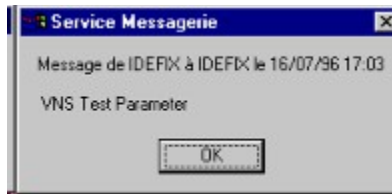
unchecked

Use this external batch file named external.bat :

```
REM *****  
REM *   External VNS Batch Sample  
REM *   filename : external.bat  
REM *****  
REM *  
net send %COMPUTERNAME% %1  
REM *  
REM End of File
```

This sample generate a send message box :





- **For example** (Use file name as argument checked)

**For this sample**

External program

Use file name as argument

**Do this**

C:\WINNT\system32\cmd /C C:\VNS\external.bat

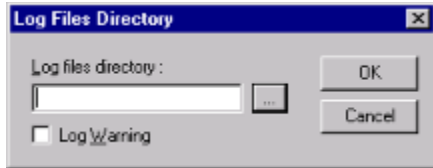
checked

This sample generate a send message box :



Ø type D :\TEMP\vns56.tmp  
VNS Test Parameter

# Log Files



Use this dialog box to specify the log files directory.

When you have finished setting directory, click OK to confirm your choices and close the dialog box, or click Cancel to disregard all changes and exit.

## **For this item**

Log files directory

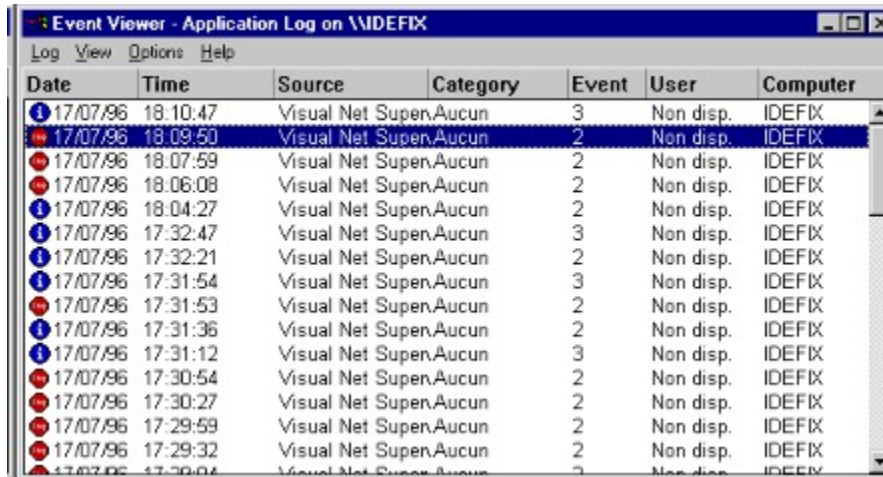
Log Warning

## **Do this**

Enter a directory name (for example, C:\LOG).

checked to add warnings messages

# Event Log



Date	Time	Source	Category	Event	User	Computer
17/07/96	18:10:47	Visual Net Super,Aucun		3	Non disp.	DEFIX
17/07/96	18:09:50	Visual Net Super,Aucun		2	Non disp.	DEFIX
17/07/96	18:07:59	Visual Net Super,Aucun		2	Non disp.	DEFIX
17/07/96	18:06:08	Visual Net Super,Aucun		2	Non disp.	DEFIX
17/07/96	18:04:27	Visual Net Super,Aucun		2	Non disp.	DEFIX
17/07/96	17:32:47	Visual Net Super,Aucun		3	Non disp.	DEFIX
17/07/96	17:32:21	Visual Net Super,Aucun		2	Non disp.	DEFIX
17/07/96	17:31:54	Visual Net Super,Aucun		3	Non disp.	DEFIX
17/07/96	17:31:53	Visual Net Super,Aucun		2	Non disp.	DEFIX
17/07/96	17:31:36	Visual Net Super,Aucun		2	Non disp.	DEFIX
17/07/96	17:31:12	Visual Net Super,Aucun		3	Non disp.	DEFIX
17/07/96	17:30:54	Visual Net Super,Aucun		2	Non disp.	DEFIX
17/07/96	17:30:27	Visual Net Super,Aucun		2	Non disp.	DEFIX
17/07/96	17:29:59	Visual Net Super,Aucun		2	Non disp.	DEFIX
17/07/96	17:29:32	Visual Net Super,Aucun		2	Non disp.	DEFIX
17/07/96	17:29:04	Visual Net Super,Aucun		2	Non disp.	DEFIX

When you check event on a specified service, Visual Net Supervisor write errors to the Windows NT Event Viewer. Visual Net supervisor send a information event when the pool start and stop



# Contents

- ◆ [Preface](#)
  - ◆ [Conventions Used in this Manual](#)
  - ◆ [Questions and Comments](#)
  - ◆ [Requirements](#)
  
- ◆ Quick Start
- ◆ [Legal Notices](#)
  - ◆ [Setting up your Workstation](#)
  
- ◆ Guided tour
  - ◆ [Scan your own network](#)
  - ◆ [Ready to poll](#)
    - ◆ [Polling Configuration](#)
  - ◆ [Add a specific host](#)
  - ◆ Design your network map
    - ◆ [Main design functions](#)
    - ◆ [Mouse commands](#)
    - ◆ [Host menu commands](#)
  
- ◆ Services
  - ◆ [ICMP](#)
  - ◆ [ECHO TCP](#)
  - ◆ [FTP](#)
  - ◆ [POP 3](#)
- ◆ [SMTP](#)
  - ◆ [NNTP](#)
  - ◆ [WWW](#)
  
- ◆ [Alarm configuration](#)
  - ◆ [Sound Alarm](#)
  - ◆ [Mail](#)
  - ◆ [Pager](#)
  - ◆ [Call External Program](#)
  - ◆ [Log Files](#)
  - ◆ [Event Log](#)

