

VOLUME LXXVII

NUMBER ONE

THE NATIONAL GEOGRAPHIC MAGAZINE

JANUARY, 1940

Thirty-two Pages of Illustrations in Full Color

On Danish By-Lanes
With 21 Illustrations and Map WILLIS LINDQUIST

Denmark—Land of Tranquility
10 Natural Color Photographs

Whales, Giants of the Sea
With 23 Illustrations REMINGTON KELLOGG

Whales, Porpoises, and Dolphins
31 Paintings ELSE BOSTELMANN

Southampton—Gateway to London
With 21 Illustrations and Map STANLEY TOOGOOD

South Florida's Amazing Everglades
With 26 Illustrations and Map JOHN O'NEILL

1940s

THE NATIONAL GEOGRAPHIC MAGAZINE
PUBLISHED BY THE NATIONAL GEOGRAPHIC SOCIETY
WASHINGTON, D. C.

THE
1940S

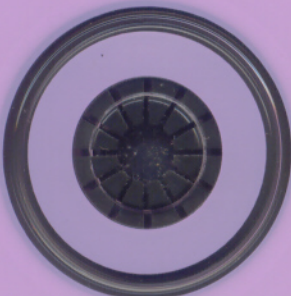
\$3.50 A YEAR


Windows® 95/95 & Macintosh® CD-ROM


NATIONAL GEOGRAPHIC The 1940s

January 1940–April 1943

Windows® 95
Windows® 98
& Macintosh®
CD-ROM



 **NATIONAL
GEOGRAPHIC**
INTERACTIVE
www.nationalgeographic.com

 **Broderbund®**

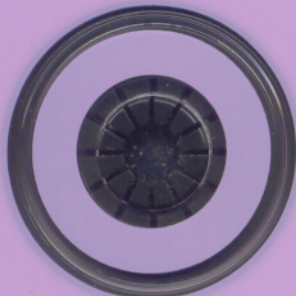
88 Rowland Way
Novato CA 94945
415. 895. 2000
www.broderbund.com
CNU744AE-CD13

©1888-1999 National Geographic Society. All rights reserved. Produced by National Geographic Interactive, Washington, D.C. 20036. NATIONAL GEOGRAPHIC, National Geographic Interactive, and the Yellow Border Design are registered trademarks ® of National Geographic Society. Marcos Registradas. Distributed by The Learning Company and its subsidiaries. Broderbund and the Broderbund logo are registered trademarks of The Learning Company. Windows is a registered trademark or trademark of Microsoft Corp. in the United States and/or other countries. Macintosh is a registered trademark of Apple Computer, Inc. All other trademarks and registered trademarks are the property of their respective holders. The Complete NATIONAL GEOGRAPHIC on CD-ROM was produced from an archive of magazines collected in a central repository and is not representative of any single regional edition of NATIONAL GEOGRAPHIC magazine.

NATIONAL GEOGRAPHIC The 1940s


May 1943–August 1946

Windows® 95
Windows® 98
& Macintosh®
CD-ROM



 NATIONAL
GEOGRAPHIC
INTERACTIVE

www.nationalgeographic.com

 Broderbund®

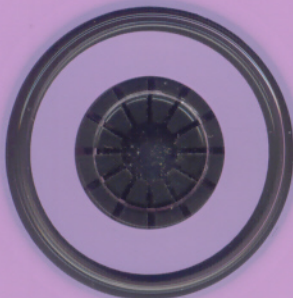
88 Rowland Way
Novato CA 94945
415. 895. 2000
www.broderbund.com
CNU744AE-CD14

©1888-1999 National Geographic Society. All rights reserved. Produced by National Geographic Interactive, Washington, D.C. 20036. NATIONAL GEOGRAPHIC, National Geographic Interactive, and the Yellow Border Design are registered trademarks ® of National Geographic Society. Marcas Registradas. Distributed by The Learning Company and its subsidiaries. Broderbund and the Broderbund logo are registered trademarks of The Learning Company. Windows is a registered trademark or trademark of Microsoft Corp. in the United States and/or other countries. Macintosh is a registered trademark of Apple Computer, Inc. All other trademarks and registered trademarks are the property of their respective holders. The Complete NATIONAL GEOGRAPHIC on CD-ROM was produced from an archive of magazines collected in a central repository and is not representative of any single regional edition of NATIONAL GEOGRAPHIC magazine.

NATIONAL GEOGRAPHIC The 1940s

September 1946–December 1949

Windows® 95
Windows® 98
& Macintosh®
CD-ROM



 **NATIONAL
GEOGRAPHIC**
INTERACTIVE
www.nationalgeographic.com

 **Broderbund®**

88 Rowland Way
Novato CA 94945
415. 895. 2000
www.broderbund.com
CNU744AE-CD15

©1888-1999 National Geographic Society. All rights reserved. Produced by National Geographic Interactive, Washington, D.C. 20036. NATIONAL GEOGRAPHIC, National Geographic Interactive, and the Yellow Border Design are registered trademarks ® of National Geographic Society. Marcus Registradas. Distributed by The Learning Company and its subsidiaries. Broderbund and the Broderbund logo are registered trademarks of The Learning Company. Windows is a registered trademark or trademark of Microsoft Corp. in the United States and/or other countries. Macintosh is a registered trademark of Apple Computer, Inc. All other trademarks and registered trademarks are the property of their respective holders. The Complete NATIONAL GEOGRAPHIC on CD-ROM was produced from an archive of magazines collected in a central repository and is not representative of any single regional edition of NATIONAL GEOGRAPHIC magazine.

A Decade of NATIONAL GEOGRAPHIC Magazine on CD-ROM

Every page, every issue... See the high-speed photographs of dazzling hummingbirds, captured on film at 1/3000 of a second. Explore the ruins of Colorado's Mesa Verde cliff dwellings. Relive the liberation of Paris in 1944, with soldiers parading down streets still echoing with the lockstep march of Nazi storm trooper boots. And experience many more captivating moments from the 1940s.

NATIONAL GEOGRAPHIC: *The 1940s* chronicles the tragedies and triumphs of this pivotal decade.

- Discover every fascinating article from the 1940s.
- Print every page in black and white or color.
- Search effortlessly for the exact information you need with a top-notch search engine.

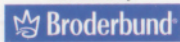
USE OF THIS PRODUCT IS SUBJECT TO THE ACCEPTANCE OF THE LICENSE AGREEMENT AND LIMITED WARRANTY CONTAINED ON THE CD-ROM.



Visit our Web site at

www.nationalgeographic.com

Distributed By:



88 Rowland Way
Novato, CA 94945
(415) 895-2000

www.broderbund.com

PROUDLY SPONSORED BY



Kodak
Picture CD

www.kodak.com



QuickTime™

© 1888-1999 National Geographic Society. All rights reserved. Produced by National Geographic Interactive, Washington, D.C. 20036. NATIONAL GEOGRAPHIC, National Geographic Interactive, and the Yellow Border Design are registered trademarks of National Geographic Society. Marcos Registradas. Distributed by The Learning Company, and its subsidiaries. Broderbund and the Broderbund logo are registered trademarks of The Learning Company. Kodak is a trademark of Eastman Kodak Company. Windows is a registered trademark or trademark of Microsoft Corp. in the United States and/or other countries. Macintosh is a registered trademark of Apple Computer, Inc. QuickTime and the QuickTime logo are trademarks used under license. QuickTime is registered in the U.S. and other countries. All other trademarks and registered trademarks are the property of their respective holders. The Complete NATIONAL GEOGRAPHIC on CD-ROM was produced from an archive of magazines collected in a central repository and is not representative of any single regional edition of NATIONAL GEOGRAPHIC magazine.

Windows® 98/95: •Pentium® 90MHz or faster •24MB RAM •70MB free hard-disk space •SVGA video card supporting 16-bit color •16-bit sound card and speakers
•4x CD-ROM drive **Optional:** •Printer •14.4 Kbps modem for Internet access •25MB hard-disk space for AOL software installation **Macintosh®:** •PowerPC or higher •System 7.5
or higher •32MB RAM •70MB free hard-disk space •60x480 16-bit color monitor •4x CD-ROM drive **Optional:** •Printer •14.4 Kbps modem for Internet access.
User is responsible for Internet fees and telephone charges.

CNU7AE-BU1079ac