

VOL. CXLVI, NO. 5

NOVEMBER, 1959

THE NATIONAL GEOGRAPHIC MAGAZINE

- California's Wonderful One FRANK CAMERON 571
B. ANTHONY STEWART
- Searching for Cliff Dwellers' Secrets 619
CARROLL A. BURROUGHS
- Boom Days in the Southwest 626
- Tukuna Maidens Come of Age HARALD SCHULTZ 629
- Whooping Cranes Fight for Survival 650
ROBERT PORTER ALLEN
FREDERICK KENT TRUSLOW
- Seychelles, Tropic Isles of Eden QUENTIN KEYNES 670
- 1960 Census: Profile of the Nation 697
ALBERT W. ATWOOD, LONNELLE AIKMAN



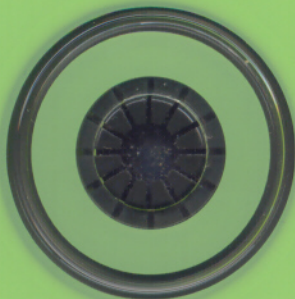
1950s The
\$8.00 A YEAR

Windows® 95/95 & Macintosh® CD-ROM

NATIONAL GEOGRAPHIC The 1950s


January 1950–April 1953

Windows[®] 95
Windows[®] 98
& Macintosh[®]
CD-ROM



 **NATIONAL
GEOGRAPHIC**
INTERACTIVE

www.nationalgeographic.com

 **Broderbund[®]**

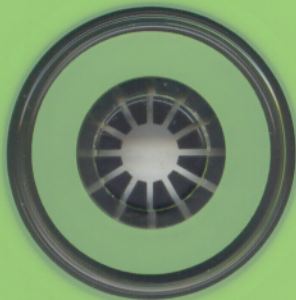
88 Rowland Way
Novato, CA 94945
415. 895. 2000
www.broderbund.com
CNV744AE-CD16


©1888-1999 National Geographic Society. All rights reserved. Produced by National Geographic Interactive, Washington, D.C. 20036. NATIONAL GEOGRAPHIC, National Geographic Interactive, and the Yellow Border Design are registered trademarks © of National Geographic Society. Marcos Registradas. Distributed by The Learning Company and its subsidiaries. Broderbund and the Broderbund logo are registered trademarks of The Learning Company. Windows is a registered trademark or trademark of Microsoft Corp. in the United States and/or other countries. Macintosh is a registered trademark of Apple Computer, Inc. All other trademarks and registered trademarks are the property of their respective holders. The Complete NATIONAL GEOGRAPHIC on CD-ROM was produced from an archive of magazines collected in a central repository and is not representative of any single regional edition of NATIONAL GEOGRAPHIC magazine.


NATIONAL GEOGRAPHIC The 1950s

May 1953–August 1956

Windows® 95
Windows® 98
& Macintosh®
CD-ROM



 **NATIONAL
GEOGRAPHIC
INTERACTIVE**
www.nationalgeographic.com

 **Broderbund®**

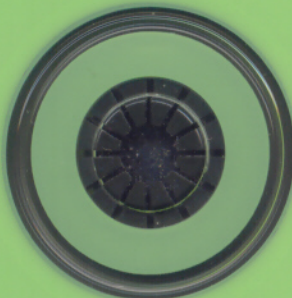
88 Rowland Way
Novato CA 94945
415. 895. 2000
www.broderbund.com
CNV744AE-CD17

©1888-1999 National Geographic Society. All rights reserved. Produced by National Geographic Interactive, Washington, D.C. 20036. NATIONAL GEOGRAPHIC, National Geographic Interactive, and the Yellow Border Design are registered trademarks © of National Geographic Society. Marcos Registradas. Distributed by The Learning Company and its subsidiaries. Broderbund and the Broderbund logo are registered trademarks of The Learning Company. Windows is a registered trademark or trademark of Microsoft Corp. in the United States and/or other countries. Macintosh is a registered trademark of Apple Computer, Inc. All other trademarks and registered trademarks are the property of their respective holders. The Complete NATIONAL GEOGRAPHIC on CD-ROM was produced from an archive of magazines collected in a central repository and is not representative of any single regional edition of NATIONAL GEOGRAPHIC magazine.

NATIONAL GEOGRAPHIC The 1950s

September 1956–December 1959

Windows® 95
Windows® 98
& Macintosh®
CD-ROM



NATIONAL
GEOGRAPHIC
INTERACTIVE

www.nationalgeographic.com



Broderbund®

88 Rowland Way
Novato CA 94945
415.895.2000
www.broderbund.com
CNV744AE-CD18

©1888-1999 National Geographic Society. All rights reserved. Produced by National Geographic Interactive, Washington, D.C. 20036. NATIONAL GEOGRAPHIC, National Geographic Interactive, and the Yellow Border Design are registered trademarks ® of National Geographic Society. Marcas Registradas. Distributed by The Learning Company and its subsidiaries. Broderbund and the Broderbund logo are registered trademarks of The Learning Company. Windows is a registered trademark or trademark of Microsoft Corp. in the United States and/or other countries. Macintosh is a registered trademark of Apple Computer, Inc. All other trademarks and registered trademarks are the property of their respective holders. The Complete NATIONAL GEOGRAPHIC on CD-ROM was produced from an archive of magazines collected in a central repository and is not representative of any single regional edition of NATIONAL GEOGRAPHIC magazine.

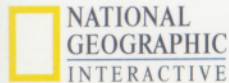
A Decade of NATIONAL GEOGRAPHIC Magazine on CD-ROM

Every page, every issue... Endure humanity's first cruel winter at the South Pole, as a team of scientists battles temperatures of 100°F below zero. Explore the world's vast oceans with Captain Jacques-Yves Cousteau and his revolutionary Aqua-Lung™. Thrill to the conquest of Mount Everest in 1954. Discover the wreck of the *Bounty* and meet the direct descendants of Fletcher Christian and his crew. And experience many more captivating moments from the 1950s.

NATIONAL GEOGRAPHIC: *The 1950s* offers detailed accounts of history-making expeditions to the last frontiers, capturing the timeless excitement of exploration on CD-ROM.

- Discover every fascinating article from the 1950s.
- Print every page in black and white or color.
- Search effortlessly for the exact information you need with a top-notch search engine.

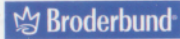
USE OF THIS PRODUCT IS SUBJECT TO THE ACCEPTANCE OF THE LICENSE AGREEMENT AND LIMITED WARRANTY CONTAINED ON THE CD-ROM.



Visit our Web site at

www.nationalgeographic.com

Distributed By:



88 Rowland Way
Novato, CA 94945
(415) 895-2000

www.broderbund.com

PROUDLY SPONSORED BY



Kodak
Picture CD

www.kodak.com



Dataware
TECHNOLOGIES



QuickTime™



© 1888-1999 National Geographic Society. All rights reserved. Produced by National Geographic Interactive, Washington, D.C. 20036. NATIONAL GEOGRAPHIC, National Geographic Interactive, and the Yellow Border Design are registered trademarks ® of National Geographic Society. Marcas Registradas. Distributed by The Learning Company, and its subsidiaries. Broderbund and the Broderbund logo are registered trademarks of The Learning Company. Kodak is a trademark of Eastman Kodak Company. Windows is a registered trademark or trademark of Microsoft Corp. in the United States and/or other countries. Macintosh is a registered trademark of Apple Computer, Inc. QuickTime and the QuickTime logo are trademarks used under license. QuickTime is registered in the U.S. and other countries. All other trademarks and registered trademarks are the property of their respective holders. The Complete NATIONAL GEOGRAPHIC on CD-ROM was produced from an archive of magazines collected in a central repository and is not representative of any single regional edition of NATIONAL GEOGRAPHIC magazine.

Windows® 98/95: •Pentium® 90MHz or faster •24MB RAM •70MB free hard-disk space •SVGA video card supporting 16-bit color •16-bit sound card and speakers
•4x CD-ROM drive **Optional:** •Printer •14.4 Kbps modem for Internet access •25MB hard-disk space for AOL software installation **Macintosh:** •PowerPC or higher •System 7.5
or higher •32MB RAM •70MB free hard-disk space •640x480 16-bit color monitor •4x CD-ROM drive **Optional:** •Printer •14.4 Kbps modem for Internet access.

CNV7AE-BW079ac