

Fig 1.

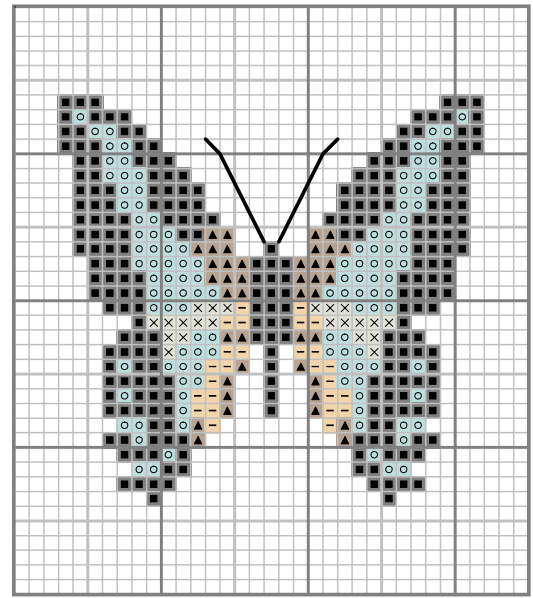


Fig 2.

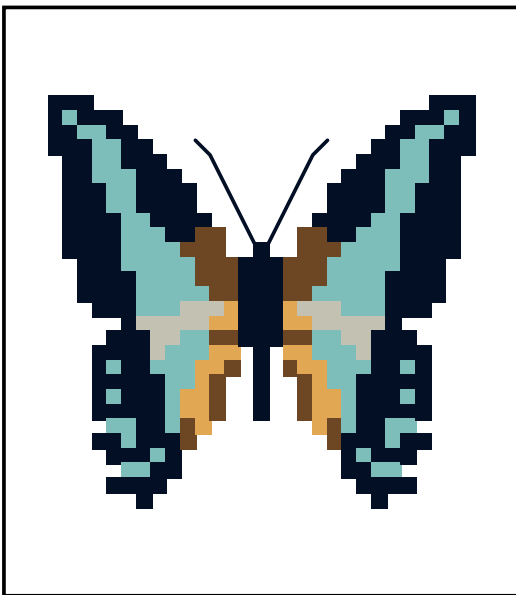


Fig 3.

### Sample Exports from StitchCraft Professional Edition.

These WMFs (Windows Metafiles) should be printed out at a resolution of 1200 dpi or higher and 133 lpi for best results. Printing on a lower resolution printer (e.g. 300 dpi laser) may result in the loss of some grey grid lines.

**Figure 1:** is a simple symbol chart on black/grey grid.

**Figure 2:** is a symbol chart with a 50% colour wash.

**Figure 3:** is a colour chart exported with border and no grid.

The colour wash option is variable from 1-100%, and adds colour and interest to a symbol chart without affecting its legibility. These samples show just a few ways of how charts can be exported from StitchCraft, there is a wide range of options such as grid colour & thickness, symbol colour, borders & centre arrows, backstitch options and more to give you maximum control over the exporting process.

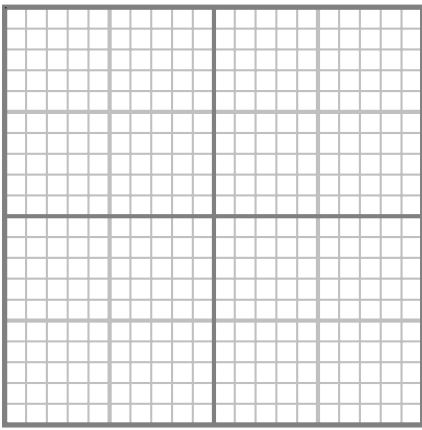


Fig 4.

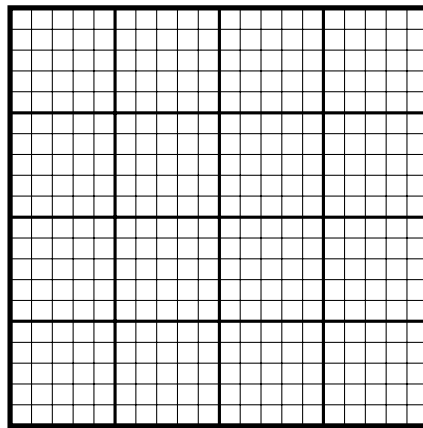


Fig 5.

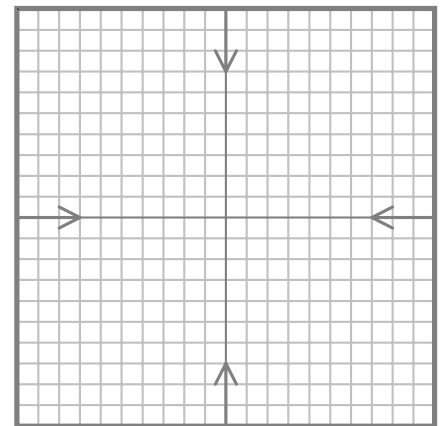


Fig 6.

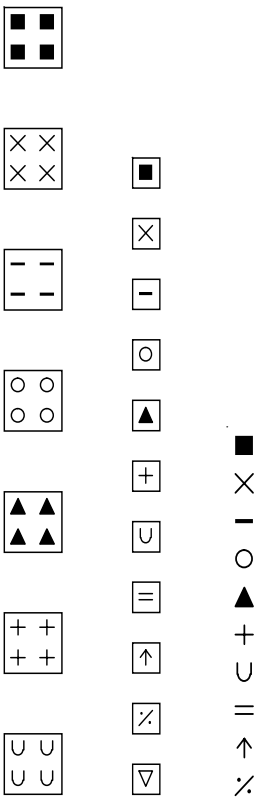


Fig 7.

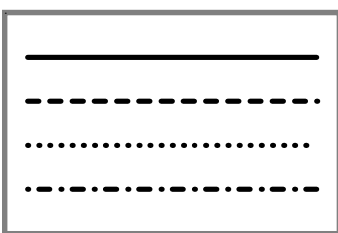


Fig 8.

**Sample Exports from StitchCraft - Grids & Backstitch.**

Figure 4,5 & 6: are three examples of variations on the standard charting grid, with different line shades and thicknesses, different emphasis and the addition of centremarks.

Figure 7: is three example of keys constructed in StitchCraft.

Figure 8: is an example of the different options available for displaying backstitch: solid, dashed, dotted, or dot-dashed. Backstitch may also be displayed in colour.