



WinPtr - Windows Printer Control Utility

Pelware
From
Silent Software
Winptr © 1994

Index

- [Introduction](#)
- [The Pel - ICON](#)
- [Menus](#)
- [Printer orientation](#)
- Hotkeys
 - [Changing key combination](#)
 - [Reminder window](#)
- Capture Functions
 - [Explanation of capture areas](#)
 - [Screen](#)
 - [Window](#)
 - [Client](#)
 - [Rectangle](#)
- Printing Functions
 - [Input File](#)
 - [Clipboard](#)
 - [Page Eject](#)
- Output Options
 - [Printer](#)
 - [Adjust to printer](#)
 - [Monitor sizing](#)
 - [File](#)
 - [Fax](#)
 - [Clipboard](#)
- [Orientation](#)
- Clipboard
 - [To](#)
 - [From](#)
 - [Clearing](#)
 - [Viewing](#)
- [About bitmaps](#)
- Miscellaneous Functions
 - Clipboard
 - [Viewer](#)
 - [Clearing](#)
 - [Printer Information](#)
 - [Change default printer](#)
 - [Route all printer output to a file](#)
 - [Identify fax driver](#)
 - [Control Panel - Printers](#)
 - [Print Setup](#)
 - [Page eject](#)
- [How To ...](#)
- Miscellaneous
 - [Peliware.ini](#)
 - [Future stuff](#)

Product Plugs

Registration

Uninstalling WinPtr

What's with the damn penguin?



WinPtr - Windows Printer Control Utility
Delaware
From
Silent Software
Winptr © 1994

How To ...

Find the icon when it's buried behind windows

Print a ...

screen

window

client

rectangle

clipboard

ASCII File

BMP Bitmap

Metafile Bitmap

Capture to a file

screen

window

client

rectangle

Save the clipboard to a file

Load a file into clipboard

Send to my fax

Change Windows default printer

Route all printer output to a file

Identify my fax driver

Change printer setup

Eject printer page

Change printer orientation

Clear the clipboard

View the clipboard

Remove WinPtr from my system

Introduction

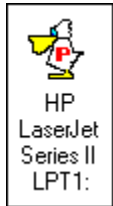
WinPtr is an icon based set of printer control functions. Major functions are available via hotkeys from anywhere in any Windows application (provided that application doesn't kill a hotkey).

WinPtr allows capture of the screen, current window or its client area, or a user delimited rectangle to the printer, a fax, the clipboard or a file. Additionally, the user can print a picture or text file; load the clipboard from such a file; print the clipboard contents whether picture or text; and store those contents in a file.

Miscellaneous functions trigger a page eject; clear or view the clipboard; allow changing the default printer; identifying the fax driver; and accessing the Windows printer setup dialog or the Control Panel printer applet.

The tasteful WinPtr pelican icon (pel-icon) shows the default printer orientation (P=portrait, L=landscape) on its body and the current default printer's name in its title.

The Pel - ICON



The WinPtr icon, a tastefully designed pelican, serves as the anchor to the printer control functions. The pelican's body displays the current orientation of the default printer: P = portrait, L = landscape. It will display an X if the selected printer is not available, such as when you're on a network and the printer is not attached. The icon caption is the name of the current default printer as defined in the [devices] section of Win.ini.

Double-clicking the icon toggles the orientation. This can also be achieved by using hotkeys **{CTRL}{SHIFT}{P}** and **{CTRL}{SHIFT}{L}** set the orientation to portrait and landscape, respectively.

Single-clicking the icon displays the control menu augmented with WinPtr's functions.

Changing Hotkey Combo

The default hotkey combination is **{CTRL}{SHIFT}**. Pressing these two keys simultaneously with a mnemonic key (such as P for portrait orientation) signals WinPtr to awaken, intercept and interpret the following key stroke, and carry out the designated action.

If you prefer another hotkey combination, you can specify it by changing the appropriate entry in the PELIWARE.INI file in the WinPtr directory (c:\windows\winptr) if you didn't override it during setup. You can use any editor, including Windows Notepad.

The installed peliware.ini file contains the following relevant lines:

```
[winptr]
; hotkey - 1=shift,2=ctrl,4=alt - for a combination add the numbers
;
;
;hotkey=3      ... is the default           i.e ctrl/shift=1+2=3
```

To change the hotkey combo, uncomment the last line by removing the semi-colon (;), then change the number 3 to whatever number represents the sum of key values for your desired keys, e.g. 6 (= 4+2) for Alt-Ctrl.

You must close and re-open WinPtr for the new combo to become effective.

WinPtr Menus

WinPtr's menus are accessed by:

- single-clicking on the pelican icon, or
- pressing **{CTRL}{SHIFT}{I}** (for icon)

Either will bring up the following menu first-page:

Restore	
M ove	
C lose	Alt+F4
? -> File	Ctrl-shift-F ▶
? -> Clipboard	Ctrl-shift-K ▶
? -> Fax	Ctrl-shift-X ▶
?File -> Printer	▶
Clipboard -> Printer	Ctrl-shift-B
Adjust Clipboard -> Printer	
Client area -> Printer	Ctrl-shift-C
Screen area -> Printer	Ctrl-shift-S
Adjust Screen -> Printer	Ctrl-shift-A
Rectangle -> Printer	Ctrl-shift-R
Adjust Rectangle -> Printer	
Window -> Printer	Ctrl-shift-W
Help ...	Ctrl-shift-F1
Hotkeys ...	Ctrl-shift-H
About ...	
Printer Control Stuff ▶	

Single-clicking on the last item: **Printer Control Stuff** adds the following menu page:

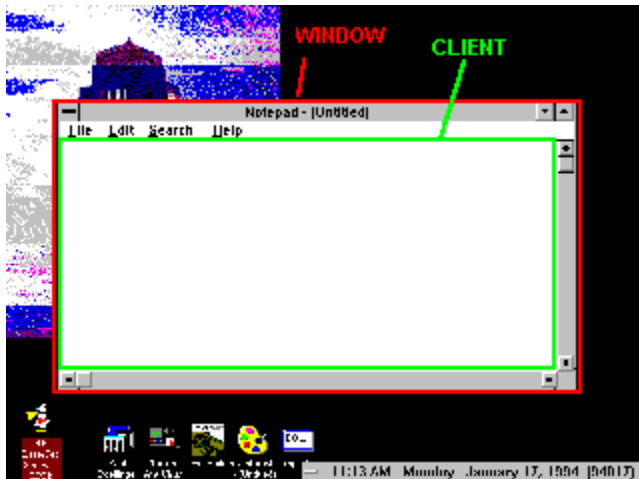
Clear Clipboard	
View Clipboard	Ctrl-shift-V
Eject Page	
Printer Setup ...	
Printer Information ...	
Identify Fax Driver...	▶
Control Panel - Printers...	
Portrait Orientation	Ctrl-shift-P
Landscape Orientation	Ctrl-shift-L
Reroute Printer Output to FILE:	
Change Default Printer...	▶

Capture Areas

When printing from the Windows desktop, you have several choices:

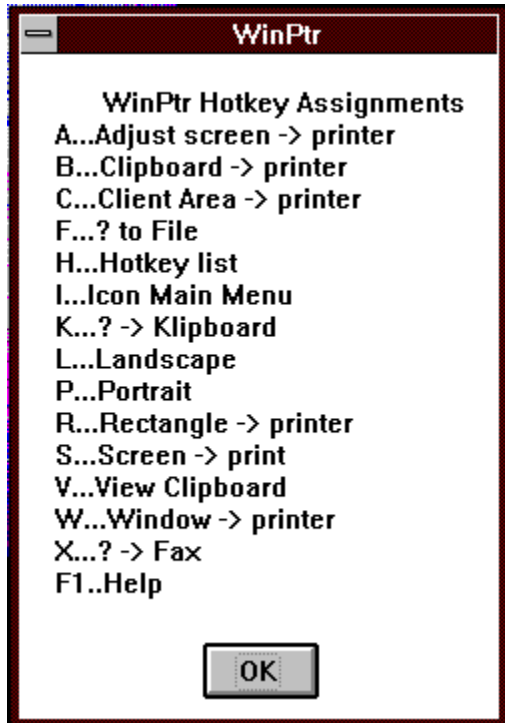
- Screen -- The entire surface of the monitor.
- Window -- The currently active window, **including** borders, menus and title bar.
- Client Area -- The inside area of the currently active window, **excluding** borders, title bar, menus and scroll bars.
- Rectangle -- a user defined area outlined by dragging the cross-haired cursor.

The following picture is a **screen** print with a **window** and **client area** highlighted:



Hotkey Reminder Window

Pressing **{CTRL}{SHIFT}{H}** or selecting the **Hotkeys** menu item from [menu page 1](#) brings up the following reminder window:



It's a Pelican, Dammit



My last name, Poellinger, when properly pronounced (the O is silent like the P in swimming) sounds somewhat like pelican, at least to juvenile minds, thus it became my nickname long ago. A pelican collection ensued, and the state bird of Louisiana has become my mascot. If enuf **registered** users requested it, I guess I could make an alternative exe with a more printer-like icon...but I personally have become pretty attached to old Pelly.

A marvelous bird is the Pelican.
His mouth holds more than his belly-can.
He takes in his beak
enuf food for a week;
but I'm damned if I see how the hell-he-can.

Orientation

The WinPtr icon pelican's body displays the current orientation of the default printer: P = portrait, L = landscape. It will display an X if the selected printer is not available, such as when you're on a network and the printer is not attached.

Double-clicking the icon toggles the orientation.

This can also be achieved by using hotkeys **{CTRL}{SHIFT}{P}** and **{CTRL}{SHIFT}{L}** set the orientation to portrait and landscape, respectively.

Finally, you can change the orientation by clicking on the appropriate menu item on menu page 2.

Capturing the Screen

To capture an image of the current screen, you must first decide on the destination of the image:

- Printer -- Screen image printing comes with 2 output options, monitor sizing and printer adjusted.
- Monitor sizing -- **{CTRL}{SHIFT}{S}**
- Printer adjusted -- **{CTRL}{SHIFT}{A}**
- File -- Click on the '? -> File' entry on menu page 1, then on the **Screen** entry.
- Clipboard -- This entry is equivalent to pressing the **{PRINTSCREEN}** key on your keyboard. Click on the '? -> Clipboard' entry on menu page 1, then on the **Screen** entry.
- Fax -- You must have identified your fax driver prior to sending it a screen image. Click on the '? -> Fax' entry on menu page 1, then on the **Screen** entry.

All screen printing functions are available to clicking on menu page 1.

WinPtr hides the icon (after its menus disappear) for 2 seconds while it captures the screen image. Sometimes it returns under Windows Print Manager's icon, which has usurped the empty icon space.
--

? -> File Output Options

Clipboard -> File

Client -> File

Screen -> File

Window -> File

Rectangle -> File

? -> Fax Output Options

Clipboard -> Fax

Client -> Fax

Screen -> Fax

Window -> Fax

Rectangle -> Fax

? -> Clipboard Input Options

?File -> Clipboard	▶
Window -> Clipboard	Alt-Prtsc
Client -> Clipboard	
Rectangle -> Clipboard	
Screen -> Clipboard	Prts

Capturing a Window

To capture an image of the active window, you must first decide on the destination of the image:

- Printer -- **{CTRL}{SHIFT}{S}**. Note that you can get a printer adjusted print of the window by 1) capturing the window to the clipboard, then printing the clipboard.
- File -- Click on the '**? -> File**' entry on menu page 1, then on the **Window** entry.
- Clipboard -- This entry is equivalent to pressing the **{ALT}{PRINTSCREEN}** keys on your keyboard. Click on the '**? -> Clipboard**' entry on menu page 1, then on the **Window** entry.
- Fax -- You must have identified your fax driver prior to sending it a window image. Click on the '**? -> Fax**' entry on menu page 1, then on the **Window** entry.

All window printing functions are available to clicking on menu page 1.

WinPtr hides the icon (after its menus disappear) for 2 seconds while it captures the window image. Sometimes it returns under Windows Print Manager's icon, which has usurped the empty icon space.
--

Capturing Client Area

To capture an image of the active window's client area, you must first decide on the destination of the image:

- Printer -- **{CTRL}{SHIFT}{C}**. Note that you can get a printer adjusted print of the client area by capturing the client area to the clipboard, then printing the clipboard.
- File -- Click on the '**? -> File**' entry on menu page 1, then on the **Client Area** entry.
- Clipboard -- Click on the '**? -> Clipboard**' entry on menu page 1, then on the **Client Area** entry.
- Fax -- You must have identified your fax driver prior to sending it a client area image. Click on the '**? -> Fax**' entry on menu page 1, then on the **Client Area** entry.

All client area printing functions are available to clicking on menu page 1.

WinPtr hides the icon (after its menus disappear) for 2 seconds while it captures the window image. Sometimes it returns under Windows Print Manager's icon, which has usurped the empty icon space.
--

Capturing a Rectangle

To capture a rectangular portion of the screen, you must

FIRST decide on the destination of the image:

- Printer -- Screen image printing comes with 2 output options, monitor sizing and printer adjusted.
- Monitor sizing -- **{CTRL}{SHIFT}{R}**
- Printer adjusted -- Click on the '**Adjust Rectangle to Printer**' entry on menu page 1.
- File -- Click on the '**? -> File**' entry on menu page 1, then on the **Rectangle** entry.
- Clipboard -- Click on the '**? -> Clipboard**' entry on menu page 1, then on the **Rectangle** entry.
- Fax -- You must have identified your fax driver prior to sending it a client area image. Click on the '**? -> Fax**' entry on menu page 1, then on the **Rectangle** entry.

SECOND, you must outline the rectangle to be captured. WinPtr changes the cursor to a crosshairs. Hold down the left mouse button and drag the cursor to form a rectangle defining the desired area. A rectangular outline with dimensions displayed inside displays as you drag. Release the left mouse button to complete the capture.

All rectangle printing functions are available to clicking on menu page 1.

WinPtr hides the icon (after its menus disappear) for 2 seconds while it captures the window image. Sometimes it returns under Windows Print Manager's icon, which has usurped the empty icon space.
--

Suggestion: With WinPtr active, go to the Hotkey Reminder Help Topic, press **{CTRL}{SHIFT}{R}**, capture the text inside the sample popup window there, sending it to the printer. This will create a handy hotkey reference card for you.

Printing a File

Click on the '? -> **Printer**' entry on menu page 1, bringing up this submenu:



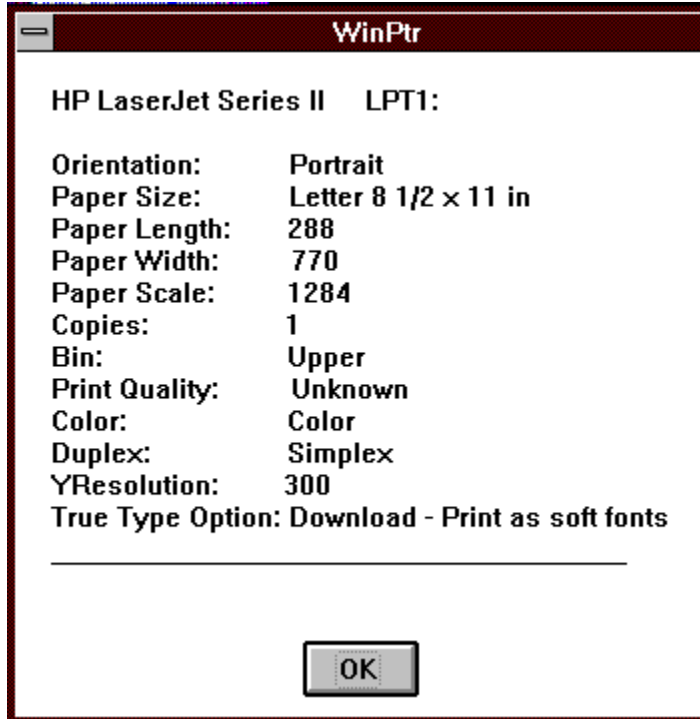
Select the desired input source.

WinPtr then pops up the Windows standard file open dialog for you to select the input file.

Note: WinPtr prints ASCII / Text files using a Windows edit control. This limits the file size of printable files to about 32K. Files larger than that will be only partially printed.

Printer Information

To see a screen describing your printer and its capabilities, click on '**Printer Control Stuff**' on [menu](#) page 1, then '**Printer Information**' on menu page 2.



Clearing the Clipboard

To clear the clipboard of its contents, click on '**Printer Control Stuff**' on menu page 1, then '**Clear Clipboard**' on menu page 2.

Viewing the Clipboard

To launch the windows clipboard viewer (equivalent to typing 'clipbrd' in the Windows Program Manager run menu):

- Press **{CTRL}{SHIFT}{V}**.
- Click on '**Printer Control Stuff**' on menu page 1, then '**Clear Clipboard**' on menu page 2.

Printing the Clipboard

To print the clipboard press **{CTRL}{SHIFT}{B}** (for board). This output is monitor sized.

Winptr determines the format of the clipboard contents and prints accordingly, whether it's text, a Windows bitmap (BMP) or metafile (WMF).

Ejecting the Printer Page

To send a page eject to the default printer, click on '**Printer Control Stuff**' on menu page 1, then '**Eject Page**' on menu page 2.

Launching Windows Printer Setup Dialog

To launch Windows Printer Setup dialog, click on '**Printer Control Stuff**' on menu page 1, then '**Printer Setup**' on menu page 2.

Launching Control Panel Printers Dialog

To launch Windows Control Panel Printers dialog, click on '**Printer Control Stuff**' on menu page 1, then '**Control Panel - Printers**' on menu page 2.

Clipboard Output Options

To send the clipboard contents to the:

- Printer
- Monitor sized -- Press **{CTRL}{SHIFT}{B}**.
- Printer Adjusted -- Click on the **Adjust Clipboard -> Printer** entry on menu page 1.
- File -- Click on the ? -> File entry on menu page 1, then on the **Clipboard** entry.

Clipboard Input Options

Click on the ? ->**Clipboard** entry on menu page 1, bringing up the following submenu:



- File -- Select the '**?File -> Clipboard**' entry, then select the input file type



Alternatively, for two of the sources hotkeys are available:

- Screen - alternatively, press the **{PRINTSCREEN}** key.
- Window - alternatively, press **{ALT}{PRINTSCREEN}**.

Note: WinPtr loads ASCII / Text files using a Windows edit control. This limits the file size of text input files to about 32K. Files larger than that will be only partially loaded.

Adjust to Printer Output Option

WinPtr provides two size options for printing the following:

- Screen
- Rectangle
- Clipboard
- Bitmap (BMP) file

Hotkey printing of the first three defaults to monitor sizing. Bitmap files and the others can be printed so that the output is adjusted to the printer page by clicking on the appropriate 'adjust' item on the menus.

When **adjusted size** printing is requested, WinPtr computes the **maximum size** output image that will fit on the page and still **retain the image's aspect ratio**.

Monitor Sizing Printer Output Option

WinPtr provides two size options for printing the following:

- Screen
- Rectangle
- Clipboard
- Bitmap (BMP) file

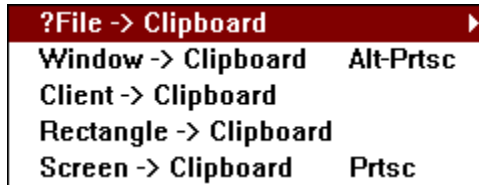
Hotkey printing of the first three defaults to monitor sizing. Bitmap files and the others can be printed so that the output is adjusted to the printer page by clicking on the appropriate 'adjust' item on the menus.

When **monitor size** printing is requested, WinPtr sizes the output image to have the same horizontal and vertical pixel measurement on the printer as it has on the monitor. This usually results in a smaller image.

Note that where monitor size printing is not an explicit option, you can capture or transfer the image to the clipboard using the WinPtr functions available for that, then print the clipboard with **{CTRL}{SHIFT}{B}**, which defaults to monitor sizing.

File Output Options

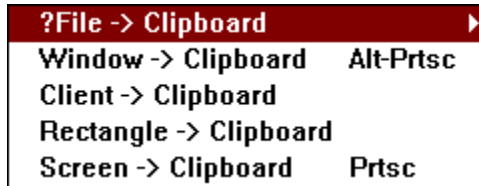
File output options can be accessed by pressing **{CTRL}{SHIFT}{F}** or by clicking on the '**? -> File**' entry on menu page 1. The following submenu appears:



Select the entry corresponding to the source. In the case of the clipboard, WinPtr can discern whether the contents are text, a bitmap or metafile and creates the appropriate output file. All captured images are stored as (DIB) bitmaps.

Fax Output Options

Fax output options can be accessed by clicking on the '? -> Fax' entry on menu page 1. The following submenu appears:



Select the entry corresponding to the source.

You must have identified your fax driver to WinPtr prior to requesting that it send fax output

Features Under Consideration

Some things I'd like to add to WinPtr, in a later version; some easy, some iffy:

- Hotkey access to Print Manager
- Print directory
- Print 'Whereis' type report
- Print 'grep' type report
- Hex printing file contents
- Netware print queue capturing to sync with printer changes
- Netware printer queue status
- Enhance device capability information display
- Provide capability to print text files larger than 32K
- Add option to save successive captures to files automatically named sequentially avoiding interruptions during a capture sequence.

Let me know if you have a print need that would make a good addition. If I use it, I'll send you a free upgrade.

The Peliware.INI File

WinPtr stores working information in this file in the directory where the WinPtr executables are stored. Typical contents are:

```
[winptr]
; hotkey - 1=shift,2=ctrl,4=alt - for a combination add the numbers
;
;
;                               i.e ctrl/shift=1+2=3
;hotkey=3      ... is the default
fax=HP LaserJet Series II on LPT1:
```

Lines beginning with semi-colons (;) in Windows INI files are treated as comments.

The commented hotkey information documents the default and how to change it.

WinPtr stores the 'fax=' entry to remember your fax driver from session to session. It creates this entry when you identify your fax driver, which you must do prior to sending WinPtr output to your fax.

Identifying Your Fax Driver

Before you can route WinPtr output to your fax, you must tell WinPtr which Windows device is your fax. WinPtr then records its name in pelware.ini for retrieval when needed.

Identify your fax by clicking the '**Printer Control Stuff**' entry on menu page 1, then the '**Identify Fax Driver**' entry on menu page 2. WinPtr displays a list of available active devices from your win.ini file, e.g.

COMPAQ Pagemarq 20 v2012.015 on LPT1.PFP

Generic / Text Only on LPT1:

HP DeskJet 1200C on LPT3.pfp

HP LaserJet III Si on LPT2.pfp

HP LaserJet Series II on LPT1:

QMS ColorScript 100 on LPT1:

Click on the line containing your fax name.

When you route something to your fax, WinPtr:

- changes the Windows default printer to your fax using the device information it recorded in pelware.ini when you identified the fax,
- "prints" the output to the default printer (your fax), then
- restores the prior default printer (your printer).

Printer Output Options

All printer output choices are available via items on menu page 1, partially depicted here:

?File -> Printer	
Clipboard -> Printer	Ctrl-shift-B
Adjust Clipboard -> Printer	
Client area -> Printer	Ctrl-shift-C
Screen area -> Printer	Ctrl-shift-S
Adjust Screen -> Printer	Ctrl-shift-A
Rectangle -> Printer	Ctrl-shift-R
Adjust Rectangle -> Printer	
Window -> Printer	Ctrl-shift-W

Many are also available via hotkeys, as noted on the above menu section.

Additionally, several printer output options offer a choice of monitor or printer adjusted sizing.

Changing the Default Printer

Windows maintains the identification information about the default printer, printer name, driver file name and output port, in the win.ini file in its [windows] section's "device=" entry. It also has a list of available output devices in its [devices] sections with the same information for each.

When you wish to change the default printer, you select the '**Printer Control Stuff**' entry on menu page 1, then the '**Change Default Printer**' entry on menu page 2. WinPtr displays all available active devices from your win.ini file (devices with port not "none") in a list like this:

COMPAQ Pagemark 20 v2012.015 on LPT1.PFP
Generic / Text Only on LPT1:
HP DeskJet 1200C on LPT3.pfp
HP LaserJet IIISi on LPT2.pfp
HP LaserJet Series II on LPT1:
QMS ColorScript 100 on LPT1:

The current default printer is grayed (or grayed, depending on your chromatic persuasion).

Click on the line containing the desired new printer identification. WinPtr changes win.ini to the new printer and issues the proper notification to other active Windows applications that the default printer has changed. Note, though, that not all Windows applications pay attention to such notifications.

Please note that even if you paid for a diskette or CD containing this package, you must still pay my registration fee for use of WinPrt past the 30 day free trial. The fee you paid for the CD or diskette is someone else's "share" :-)

If you paid for WinPrt, a smaller, simpler incarnation (see below), you can own this one for \$10.

I, and all those dependent on me, thank you.

You are free to pass the **TRIAL VERSION** package on to others or upload it to bulletin boards provided that 1) you do not charge for it above the cost of distribution, and 2) all parts of the package are included (see "included" at the top).

A registered version may not, of course, be uploaded or passed on to others.

Thank you for supporting shareware.

Product support for WinPrt, and all Peliware, can be obtained free via e-mail. Send all correspondence to 70732,3576 on CompuServe (70732.3576@compuserve.com).

Corporate licenses are available:

2 to 25 users ... \$250
26 to 250 users ... \$500
over 250 users ... \$500 plus \$1 per user
unlimited users ... \$1000 just in case Microsoft wants one :-)

The latest version of this package, and all other Peliware, can always be found in the libraries of the WINSHARE and MSBASIC fora on CompuServe.
--

I've been selling a group of simpler utilities for screen and clipboard printing and printer orientation control (PPrint/Prtsc, PClip/PrtClip, and Portland), collectively called WinPrt, for some time. Look for them in the WINSHARE and MSBASIC fora of CompuServe (search for WINP*.ZIP for latest version).

The set is \$10. Corporate licenses are \$250.

Look for PPRTR*.ZIP in WINSHARE or MSBASIC for a DLL providing advanced printer control to higher level languages (like Visual Basic).

About Bitmaps

WinPtr handles bitmaps in several formats:

- **Windows Bitmaps (BMPs)** -- This is the "normal" windows bitmap, also called a DDB or device dependent bitmap. It is "dependent" on the color organization and capabilities of your video display, thus restricted to the colors the device driver supports, for example. The normal method of copying and resizing BMPs is the Windows API BitBlt function. Depending on the drivers involved (display and printer), the results of using BitBlt to print a bitmap can vary from extremely poor output quality to no output at all. Although all printer drivers are able to BitBlt a monochrome bitmap to the printer, this technique generally produces poor results because the printer cannot apply gray-scaling to the image.
- **Device Independent Bitmaps (DIBs)** --DIBs were introduced in Windows 3.0, provides color capabilities without regard to the device it will eventually be displayed on. The process of displaying the image on devices with different display capabilities is simplified. For instance, capturing a screen from a 24-bit display adapter and printing it on a 1-bit (monochrome) printer can produce exceptional results if DIBs are used. Additionally, many printer drivers implement gray-scale dithering; the output on these printers is also excellent when DIBs are used. Using a DIB to convert a bitmap between display devices with different capabilities can preserve the original color information.
- **Windows Metafiles (WMFs)** -- Bitmaps are the result of executing Windows GDI (Graphic Device Interface) function calls which "paint" the image to the output device. Metafiles are a package of the coded GDI function calls necessary to create the image. The functions are "played" (re-executed) to create the resulting image when the need for its display arises. Metafiles are more device-independent than other images, as the GDI functions are interpreted at run time, based on the output device (and its capabilities) involved. Metafile support in Windows is spotty at best, however.

WinPtr supports metafiles wherever it finds them. It also uses DIBs wherever possible, converting BMPs to DIBs as soon as it finds them. All output images are stored as DIBs.

Product Plugs

During preparation of WinPtr I've used a few tools that I feel are worth recommending to others who might find themselves with similar needs.

Borlands **Resource Workshop** is the best resource tool around. **WinGIF** is a shareware product I've used successfully for some time to mess with bitmaps. To enhance debugging I've found **PC-Lint** and Bounds Checker to be invaluable. **Bounds Checker** is one of the most amazing programs I've seen...and the company, NuMega also uses a bird as its alter ego, this one really is a penguin...which validates that bird fanciers make useful tools. Finally, I've created a lot of Help files with WinWord, the default help file production tool, but I hadn't lived until I was able to use **Help Magician** on this file...what a difference...akin to the comparison of writing with a pencil versus a word processor. The authors of these products have my admiration and thanks, not to mention a goodly amount of my money.

Uninstalling WinPtr



In the unlikely event that you decide not to register WinPtr, you have a moral obligation to remove it from your system. Your loss. To make that loss easier, I've included in the package an uninstall program.

If you followed my recommendations in the read.me file, **X_WINPTR**, my uninstall program, can be found on the WinPtr diskette. If, instead, you placed it in the directory where WinPtr is installed, it cannot properly execute, because it won't delete itself. Move it somewhere else first.

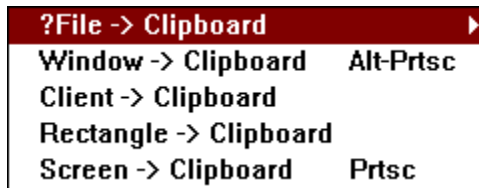
Close WinPtr if it's active. Then, from Program Manager's File/Run menu item, run X_WINPTR.

If you for some reason manually set up the Icon in the Program Manager Startup group, use [Description: WinPtr] ... If you don't use this, the uninstall won't find it..
--

Thanks for giving WinPtr a try, and for taking part in the shareware experience.

Routing Printing to a File

WinPtr provides menu options to direct a specific output function to a file:



This direction of output to a file applies **only that one time to that specific menu selection**. It has no effect on any other printer output, because it does not effect the default printer port assignment used in other printing functions (or by other applications, for that matter).

However, there are times when it's desirable to have **all printer output go to a file(s)** instead of the printer. Typically, the output file is subsequently transported to another computer to be printed. Windows allows this by recognizing an output port of FILE:.

There are two major differences between WinPtr menu functions '-> **File**' output and changing the Windows default printer's output destination to FILE:

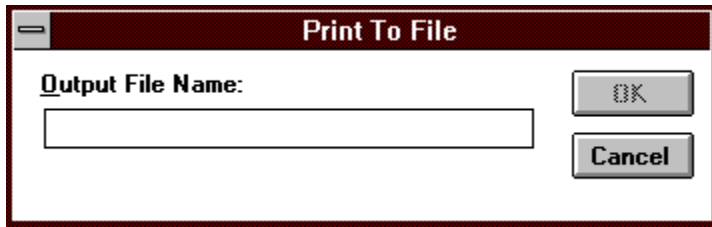
- WinPtr -- writes to a file only that one time.
- FILE: port -- all subsequent printer output goes into a file, with Windows prompting for a file name each time a print operation is requested.
- WinPtr -- no printer control characters are included in the file.
- FILE: port -- Windows sends to the file exactly what it would have sent to the printer, including all printer directive control characters.

Typically, files created when Windows "prints" to the FILE: port are later sent to the printer using DOS copy commands (copy xxx.xxx > LPT1 /b).

WinPtr provides a menu item for designating that all current default printer output henceforth be routed to the FILE: port. The menu entry for doing this is found by clicking the '**Printer Control Stuff**' entry on menu page 1.

- The menu page 2 entry for this function will read '**Reroute Printer Output to FILE:**' when such output is not currently being so directed. Click this entry to activate FILE: printer port output.
- If output is being routed to the FILE: port, the menu page 2 entry will read '**Reroute Printer Output to XXX:**' where the XXX: represents the normal port for the current default printer. Clicking this entry then will revoke FILE: output. Subsequent printing will go to the appropriate printer port.

When FILE: port output is in effect, whenever you print Windows will ask you to name the output file:



Enter a file name (with path) and the print operation will continue with that file as the destination. 'Cancel' will cancel the print operation.

Note that changing the Windows default printer using the Change Default Printer menu page 2 entry terminates FILE: port output. The new default printer's port will be used. Follow the instructions above to reroute it's output to FILE:.

Find the Icon

Selecting WinPtr functions are easy when you can see the icon: simply click on it and traverse the menu paths...OR use the hotkeys. BUT what do you do when you're deep in your work, with lots of windows opened and the icon deeply buried somewhere on your desktop below?

WinPtr provides a hotkey **{SHIFT}{CTRL}{I}** for icon which brings menu page 1 in front of your workspace. The icon doesn't appear, nor do the menus stay around to mess up any capturing you're doing. What a guy!

