



Can't wait to play a game at Mplayer? Here's one way:

Step 1 [Sign on at Mplayer.](#)

Step 2 [Find someone to play with.](#)

Step 3 [Launch and play the game.](#)

Click Help Topics or press the letter `t` to return to Contents, Index, or Search facilities.

Mplayer and ScribbleTalk are trademarks of Mpath Interactive, Inc.

Procedures for Quick Start Only

Sign On At Mplayer

- 1 From the Start bar, choose Programs, then Mplayer, then Games and click a game title. Choose Online Chat if you don't know which game to play and you want to chat with other players.
- 2 Sign on with your user name and password. Mplayer verifies your user name and password and transports you to a lobby. If you don't have an Mplayer account, you can sign up for one now. [Click here](#) for details.

Find Players

From the game lobby, use one of these ways to find a player:

- Doubleclick a game offer to enter a game room and chat with other players. Click Ready To Play? to let the moderator know you want to play the game.
- Click Auto-Match. Mplayer places you in a game room, finds other players, and moderates the room.
- Create a new game offer. You become the game offer moderator. Chat with players until someone agrees to play with you.

Launch Game

- If you clicked a game offer or Auto-Match, wait for the moderator to launch the game.
- If you are the game offer moderator, wait for enough players to accept the game offer. Click the flashing Launch Game button to launch the game.

Note: If you want to be part of the game launch and an OK or M doesn't appear next to your name on the roster, click the Ready To Play? button.

Requirements

Hardware

- n 486/100 MHz
- n Microsoft-compatible mouse
- n Keyboard
- n Color monitor with SVGA graphics capability
- n Window-95 compatible soundcard (recommended)
- n CD-ROM (2X or faster) (recommended)
- n Microphone, if you want to communicate using Mplayer's realtime speech facilities

Software

- n Windows™ 95
- n Internet access
- n Web browser (recommended)
- n Mplayer client software
- n Mplayer account (user name and password)
- n Mplayer game

Memory & Diskspace

- n 8 MB RAM
- n 5 MB diskspace available on hard drive
- n Additional diskspace for games you want to play

Notes

These are the requirements for the Mplayer client. Games usually have additional requirements, such as more memory or diskspace. Check out a game's requirements at its arcade page or in a game room. If you are in a game room, click the Help button and then click Help On This Game.

Realtime speech with ScribbleTalk is not available if you are using an 8-bit soundcard.

Beta Feedback

To provide feedback:

- ⁂ If your Internet connection and web browser are working, please provide feedback at our web page -- <http://www.mplayer.com/members/mplay-feed.html>.
- ⁂ If you prefer sending your feedback through email, our email account for feedback is mpathbeta@mpath.com.
- ⁂ If your PSI Internet connection isn't working, contact PSI directly at (717) 770-1705.

How To ... Procedures Start Here

How To ... Log On & Off Mplayer

Sign On At Mplayer

Before you can play games or chat with friends at Mplayer, you sign on at Mplayer.

- First, Mplayer checks that you have the most current version of the software. If you don't, Mplayer automatically updates your software.
- Then, Mplayer asks for your account information. Enter your [user name and password](#). Press Enter or click OK.

User Name and Password

When you sign up for an Mplayer account, you are given a user name and password. Mplayer asks for this information when you access Mplayer member areas.

If you don't have an Mplayer account, you can sign up for one at <http://www.mplayer.com/members/mplay-sign.html>.

Log Off Mplayer

You can exit Mplayer at any time by clicking  in the right corner of the Mplayer window.

How To ... Play Games

Visit Game Arcades

Each Mplayer game has its own arcade. An arcade is filled with interesting tidbits and offers, including game software, contests, tournaments, and scores. Find out what you need to install, run, launch, and play the game at Mplayer.

There are lots of ways to get to a game arcade. For example:

- If you are in a lobby, game, or cafe room, click the Arcade button to view a list of games you can play. Doubleclick a title and Mplayer transports you to the game lobby.
- If you are wandering the World Wide Web, you can jump to the Mplayer game page at this address -- <http://www.mplayer.com/members/mplay-games.html>. Click a game title to go to its arcade page.

Visit Game Lobbies

The game lobby is a place where you can view game offers, visit game rooms, and chat with other players who want to play the game.

There are lots of ways to get to a game lobby:

- From a game arcade web page, click Browse Current Game Offers or Play Now.
- From the Windows start menu, click Program Files, then Mplayer, then Games, then the name of the game you want to play.
- From your desktop, find the MPI file for the game and click it.
- From a game room, click arcade and doubleclick the game title.

AUTO-MATCH

Looking for someone to play with? Use Mplayer's Auto-Match feature and Mplayer will find players, moderate the game room, and launch the game for you.

- 1 Go to a game arcade page or a game lobby.
- 2 Click Play Now on the game's arcade page, or click the Auto-Match button in a game lobby. Mplayer assigns you to an auto-match room, if one exists. Otherwise, Mplayer creates a new auto-match room and transports you to it.
- 3 Wait for Mplayer to launch the game.

When the minimum number of players required to play the game are in the room, Mplayer begins a game launch countdown.

Mplayer launches the game when the countdown reaches zero. If, during the countdown, the preferred number of players for optimum gameplay join, Mplayer launches the game immediately.

Pick A Game Room To Visit

You've decided which game to play and you are in the game lobby. You're ready to enter a game room, chat with other players, and play a game. How do you choose the best one?

Game rooms have visual cues that help you choose. Pick a game room that is open (not locked, full, or playing) and are close enough to you for fast action and gameplay (near, not far). [Click here](#) to see various game room cues.

After you pick a game room, you can [enter it](#).

Enter Game Rooms

- 1 Go to a game lobby.
- 2 Doubleclick a game offer name, or select a game offer name and press Enter.

The room status determines whether you can enter a room, and play the game offer. [Click here](#) for more information.

In A Game Room

Game rooms are associated with game offers. When you visit a game room, you join other players who want to play the same game offer.

You can

- Chat with other players who are in the room with you.
- Accept the game offer and wait for the game to launch.
- Exit the game room.

You can also create your own game offer and moderate the game room. [Click here](#) for more information.

View Game Settings

To view or change game settings, click the [Game Settings button](#) to view the Game Settings Panel.

Some games have special settings that determine how the game starts out. For example, for Command & Conquer you can view the technical level, the number of units, the scenario, and other game-specific parts.

The moderator controls the game settings and can change them up until the time the game launches. If you are in a game room and want the moderator to change a setting, send a message before the game launches.

Check Games

Mplayer checks to see if you have the game installed on your system and it's ready for you to play. To check a game,

- If you are in a game room, click the [Game Settings button](#) and then click the [Check Game button](#).
- If you are in an auto-match room, click the [Check Game button](#).

For more information about the requirements and installation for particular game, click the Back button twice to go to the game arcade page and check out the game's requirements and installation instructions. (not in B2)

If you do not have a particular game installed, you can still visit the game lobby and rooms. However, you can't play the game. (B2)

Accept Game Offers

To play a game, you must accept a game offer. To do this:

- 1 Go to a game lobby.
- 2 Doubleclick a game offer name. You are transported to a game room.
- 3 Click the [Ready To Play? button](#) to accept the offer. An OK appears next to your name on the roster.

You are scheduled to play with any players in the game room who have accepted the game offer. Wait for the moderator to launch the game. You can tell which player is the moderator by the big M next to the player's name on the roster.

If you decide not to play, click the [Ready to Play! button](#). The OK is removed from your name on the roster.

For information about creating a game offer and becoming its moderator, [click here](#).

Wait for Game Launch

After accepting a game offer, you wait for the moderator to launch the game.

Game launch can occur when the minimum [number of players](#) required have accepted a game offer. (The moderator sets the number of players when creating a game room.) At this point, the moderator can wait for additional players to accept the offer, or launch the game immediately.

Game Launch

If you haven't accepted the offer and the moderator launches the game, you'll see several player names disappear from the roster as they go off to play the game. You are left in the room with any other players who didn't accept the offer. At this point, you can

- Continue chatting with the players.
- Become the moderator and launch a new game.
- Leave the game room.

Stop Playing

When you stop playing a game, you end up in a game room with anyone who left the game at the same time as you did. You can

- Chat with other players about what happened.
- Play again.
- Return to the game lobby and check out what rooms are available.
- Log off Mplayer.

Exit procedures vary by game. The procedure for exiting a particular game is provided in its Mplayer help file.

Ways To Play A Game

Choose a game and go to the game's lobby. From the lobby you can:

- n Use Mplayer's matchmaker feature.
 - 1 Choose Auto-Match. Mplayer assigns you to an auto-match game room, or creates a new automatch game room.
 - 2 Wait for other players.
- n Join as a regular player.
 - 1 Select a game offer and press Enter. Mplayer transports you to the game room.
 - 2 Click Ready To Play? to tell the moderator you want to play the game.
 - 3 Wait for the moderator to launch the game.
- n Create a game room and become its moderator.
 - 1 Click the [Create Room button](#) to create a new game offer.
 - 2 Change the game settings, if they are available for the game you are going to play. Click the Game Settings button, then click the Modify Settings button.
 - 3 Moderate the game room.
 - 4 Wait for enough players to accept the game offer.
 - 5 Launch the game.
- n Join a player who paged and invited you into a game room.
 - 1 Answer Page.
 - 2 Click Join to join the player.

Note: Each game has its own start up procedures, options, and exit procedures. This information is provided in the game's help area. For more information, click Help to go to the Help Desk and click Help For A Game.

Ways To Enter A Game Lobby

- n From the game's arcade page at Mplayer.
- n From the Windows 95 Start Menu.
- n Click the Arcade button in another game lobby or at the Mplayer Café and doubleclick a game.
- n Join a player who paged and invited you into a game lobby.
- n Click a game's MPI file.

Notes About Game Offers & Rooms

- You can only be in one game or cafe room at a time.
- You can visit a game room and chat with other players without accepting the game offer. When the moderator launches the game, you and any other players who haven't accepted the game offer remain in the game room. The first player to click the Ready To Play? button becomes the moderator.
- If the moderator leaves the game offer, the moderator loses moderator status. Another player who has accepted the game offer, becomes moderator. If player in the room has accepted the game offer, the first one to click the Ready To Play button becomes the moderator.
- If you are in a game room by yourself and you leave the game room, the room is removed.

How To ... Moderate Game Offers

Become a Moderator

Here are some ways you can become a game room moderator:

- Create a game offer – Mplayer creates a game room and you automatically become its moderator.
- Click Ready To Play? in a game room that has no moderator (for example, after a game offer has launched).
- Inherit moderator status when the moderator decides not to moderate in a game room where you have already accepted the game offer.

Create Game Offers

- 1 Go to a game lobby and click the [Create Room button](#). Mplayer displays the Game Offer dialog.
- 2 Enter the [Offer Name](#).
- 3 (optional) Enter [Moderator Comment](#).
- 4 (optional) Change the [Number of Players](#).
- 5 (optional) Change the [Age of Players](#).
- 6 Click OK.

Mplayer creates the game offer and transports you to your own game room. You are the moderator for the game offer. Your name appears on the roster with an M next to it.

Offer Name

Enter up to 40 letters, symbols, and numbers for the game offer name. Other players in the game lobby see your game offer name.

Moderator Comment

Enter enticing descriptions and comments designed to lure players into your game room.

Number of Players

Change to increase the minimum number of players, or decrease the maximum number of players. For example, if you want to play Terminal Velocity with three or more players, you would change the minimum number of players from two to three.

Minimum Least number of players who must accept your game offer before you can launch the game

Maximum The most players the game allows, or the preferred number of players you want to accept your game offer before you launch the game.

Age of Players

Change to restrict the age of the players allowed in your game offer. For example, you can allow only players between the ages of 18 and 25 to play your game offer.

The default is usually set to allow all players into a game offer, unless the game is an adult game, or is restricted in some other way.

Moderate Game Rooms

When you moderate a game room, you assume certain responsibilities for the game offer. As moderator, you

- Launch the game.
- Control game room options.
- Control game settings.
- Can change a player's gameplay status.

There are [several ways](#) to become a moderator.

Change Game Settings

The moderator controls the settings for game startup. Other players can view the information.

- 1 Click the Game Settings Panel button

- 2 Change any settings you wish. For more information about a particular game's game settings, click the Help button and select Help For A Game.

For example, for Command & Conquer you can view the technical level, the number of units, the scenario, and other game-specific options.

Note: Some games have special settings for game start up. Some don't.

Control Game Room Options

Lock a game room

Change game offer name

Comment

Change Player's Game Status

- 1 Right-click a player's name on the roster
- 2 Choose De-Select User.

The player's game status changes from Set To Play To Play to Ready To Play?.



Lock Game Room

Click the Lock icon to keep players from entering your game or café room.



Unlock Game Room

Click the Lock icon to allow players to enter a previously locked game or café room.

Launch Games

When enough players accept the game offer, the moderator sees the Launch Game button flash. The moderator can wait for more players to accept the game offer, or click the Launch Game button to launch the game.

All players with game buttons showing Ready To Play! are transported to the game. Players who didn't push down the Ready To Play? button remain in the game room. The next player to push the Ready To Play? button becomes the game room moderator.

Note: Only a moderator or Mplayer (in an auto-match room) can launch a game.

Stop Being A Moderator

If you are a game room moderator and you no longer want to moderate, you can

- n Click the Ready To Play! button.
- n Exit the game room.

How To ... Chat, Scribble etc. Procedures

Communicate With Other Players

There are many ways to communicate with other players. In a game or café room, you can

- Send and view messages. [Click here](#) for more information.
- Scribble and draw on the Scribbleboard. You must be in a game or café room to scribble. [Click here](#) for more information.
- Talk using your microphone. You must be in a game or café room to talk to other players with your microphone. [Click here](#) for more information.

View & Send Messages

View Messages

Messages from other players and messages you send are displayed in the chat viewport (part of the [chat panel](#)).

Send Messages

- 1 Point at the chat box and click.
- 2 Type your message.
- 3 Press Enter when you are ready to send your message to the other players.

Right click to view a menu that you can use to [change fonts](#), text color, and other options.

To Everyone

Type your message in the text box and press Enter. Mplayer sends the message to all players in the room.

To One Player

Select the player name on the roster, type the message, and press Enter. Mplayer sends the message to the selected player.

You can also type the player name, a colon, and then your message. For example, AcePilot:Meet me in HotTV1.

To Several Players

Hold down the Ctrl key and select the players you want to send your message to. Type your message and press Enter.

You can also type a player name, then a comma, then another player name. To end the list, type colon, then type your message, and press Enter. For example, samf, julietg:here's our team strategy.

Note: Beta 2 does not include all selective chatting features. (B2)

Chat Panel

Chat Box Area in which you can edit messages, cut and copy text, and change the font type, size, and color by right clicking the chat box. Send messages to everyone in the room or selected players.

Chat Viewport Displays messages between players.

Splitter Bar Appears in between the chat box and chat viewport. Use to expand chat areas.

You can access the chat panel from the lobby or within a game or café room.

Change Chat Fonts

To change chat fonts, point at the chat input box and right click. Use the menu options to change fonts, size, and color:

Option	Action
Bold	Toggle boldface.
Italic	Toggle italics.
Underline	Toggle underline.
Point Size	Change the font size.
Font	Select a new font, or change a font's attributes including color, size, and emphasis.
Font History	Last four fonts selected.

Edit Chat Text

Use the standard Windows editing keys to edit chat text. You can also position cursor over the chat box and right-click to display a menu with these options:

Option	Action
Cut	Remove the selected text and put it on the clipboard.
Copy	Copy the selected text to the clipboard.
Paste	Insert the text on the clipboard at the cursor location.
Delete	Remove the selected text and don't put it on the clipboard.
Insert Return	Insert carriage return without sending message.
Send Message	Same as pressing Enter to send a message.

The Scribbleboard

- 1 Go to a game room or café room.
 - 2 Click the [Scribble Panel](#) button.
 - 3 Draw on the board. Use the Scribble toolset buttons to change the drawing tool, line size, or color.
- Anything you scribble on the Scribbleboard is viewed by all players in the game or café room.

Change Drawing Tool

1. Click the Scribble Panel button to display the Scribbleboard and tools.
2. Click the Drawing Tool button.
3. Click a drawing tool on the drawing toolset box.



Tool	Click To ...
Pencil	Draw freehand shapes on the board.
Line	Draw lines on the board.
Hollow Rectangle	Draw hollow rectangles and squares on the board.
Hollow Oval Tool	Draw hollow ovals and circles on the board.
Solid Rectangle	Draw solid rectangles and squares on the board.
Solid Oval	Draw solid ovals and circles on the board.
Eraser	Clean off the board.
Eyedropper	Pick up color from board and make it the current color.

Change Colors



Pick A Color

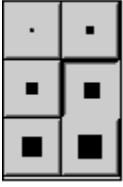
- 1 Click the Color button. The color palette appears.
- 2 Click a color.
- 3 Click OK.

Create A Custom Color

While displaying color palette.

- 1 Doubleclick a color.
- 2 Point at the color you want on the display, or enter values.
- 3 Click Add To Custom Colors, if you want the color to be shown in the custom palette (below regular colors).
- 4 Click OK.

Change Line Size



- 1 Click Line Size button. The size box appears.
- 2 Click the size you want to draw with.



Talking

Use your microphone to talk to other players while you are in a game or cafe room. Speak into your microphone while holding down the Talk button.

When someone is speaking into a microphone, their profile appears above the talk button. You cannot press down the talk button while this player is speaking. One player talks at a time.

Page Players

You can contact any player who is logged on at Mplayer and is not playing a game:

- 1 Click the Find button.
- 2 Enter the player's user name.
- 3 Type a message in the Message box.
- 4 If you want to invite the other player to join you, click Send Invitation.
- 5 Click Send.

Receive Pages

If you want to receive pages from other players at Mplayer, do the following:

- 1 Click Options.
- 2 Click the Notifications tab.
- 3 Click the Accept User Pages box. An X in the box means you will receive pages unless you are playing a game.

Respond to a Page

When another player at Mplayer pages you, you can respond by typing a message and clicking the Reply button.

Join Paged Player

A player can invite you to join them in a game or café lobby or room. To join them, click Join. (For Beta 2, you can join a player in a lobby, not in a game room).

Customize Mplayer How Tos Start Here

View Player Profile

- 1 Select a player in the roster.
 - 2 Right-click the player's name.
 - 3 Choose View User Profile.
- The player's profile appears.

Change Portraits

- 1 Click the Help button and click Select Portrait.
- 2 Browse the portrait gallery until you find a personae you like.
- 3 Click to select it.
- 4 Click the Select button to change.

Display Game Offers Differently

From the game lobby

- 1 Right-click game offer name.
- 2 Choose one of the menu options.
 - n View by Large Icon
 - n View by Small Icon
 - n View by List
 - n View Details



Display Scribble Panel

From within a game or café room, click the Scribble Panel button to display the Scribbleboard and access the Scribble toolset.



Display Game Settings Panel

From within a game or café room, click the Game Settings Panel button.



Display Face Panel

From within a game or café room, click the Face Panel button.

Mplayer Options

Tab	Contents
General	Minimize Gizmo During Game
Room Filters	Hide Red Rooms, Hide Playing Rooms, Hide Auto-Match Rooms
Sound	Play Alert Sounds, Player Interactive Sounds, Play Ambient Sounds
Notifications	Lobby Notifications, Room Notifications, Accept User Pages

Account Related Topics begin here

Create A New Account

(UNDER CONSTRUCTION: For B2, this topic documents all the steps in the Create Account script.)

- 1 From the Windows Start Bar, choose Programs, then Mplayer, and click Create A New Account. Mplayer connects to the Internet and welcomes you. Then Mplayer guides you through the sign-up process. At any point, You can
 - n Click Next to go to the next screen.
 - n Click Back if you want to return to the previous screen.
 - n Click Cancel If you don't want to create a new account at this time, click Cancel.
- 2 Read the instructions and click Next to continue.
- 3 Enter [contact information](#) and click Next to continue.
- 4 Read the user name instructions and click Next to continue.
- 5 Enter a [user name](#). If the user name is already taken, you are asked to choose a different user name. Click Next to continue.
6. Enter a [password](#) for your account.
 - n Enter your password.
 - n Enter your password again to confirm what you typed.
 - n Click the Remember Password box, if you don't want to type your password every time you sign on at Mplayer.
 - n Click Next to continue.
- 7 Read the billing setup instructions and click Next.
- 8 Choose a [billing plan](#). Enter your secret promotional code, if you have one. Click Next to continue.
- 9 Enter [billing information](#):
 - n Choose a [billing type](#).
 - n Enter your credit card number and expiration date.
 - n Change any information that is different from your [contact information](#).
 - n Click Next to continue.
- 10 Read the license agreement. Click Accept to agree to the terms and conditions. Mplayer creates your account and starts the sign on process. If you choose Decline, your account will not be created.
- 11 Read the instructions and click Next to continue.
- 12 Enter your user name and password. Click Log On.
- 13 Create your [profile](#):
 - n Browse the [portrait gallery](#) until you find a portrait you like. Click it and then click Select.
 - n Enter a description you want others to see.

Contact Information

Name Your full name and form of address you prefer.
Email address Location where you receive electronic mail.
Phone numbers Daytime, evening, and fax phone numbers.
Mailing address Location where you receive regular (snail) mail.

User Name

When you sign up for an Mplayer account, you choose a user name. The name you choose must be three to 16 characters long. It can include letters, numbers, hyphens, periods, and spaces. It must begin and end with a letter or number. You can only have one hyphen, period, or space in sequence. For example:

Allowed	Not Allowed
dragon-5	dragon-5-
Amazon	&(\$Amazon
X.Warrior	X_Warrior
Rock 1234	Rock 1234

When you sign on at Mplayer, Mplayer requests your user name and password. Other players can use your user name to page you and send messages. Your user name shows up on the roster when you are in an Mplayer lobby, game room, or chat room.

Password

A password is a series of five to 16 characters you use to sign on at Mplayer and access your account. A password prevents unauthorized people from using your account.

When you choose a password, avoid using common words or names. A combination of characters (upper and lowercase), numbers, and symbols makes your password difficult for other people to guess.

Do not give anyone your password, including people who appear to be representing Mplayer, Mpath, or game companies.

Billing Plan

Mplayer offers a variety of billing plans to suit your needs.

UNDER CONSTRUCTION. EXPAND BEFORE PRODUCT LAUNCH.

Billing Types

UNDER CONSTRUCTION. EXPAND BEFORE PRODUCT LAUNCH.

Profile

A profile is a combination of a description you enter and a picture that you choose from the Mplayer [portrait gallery](#). Your profile can be viewed by other players.

Billing Information

Payment Type	Type of credit card you want to use to pay account charges.
Credit Card Number	Credit card number.
Expiration Date	Credit card expiration date.
Full Name	Name must match the name on your credit card.
Billing Address	Address must match the address for your credit card.

Modify Account
UNDER CONSTRUCTION

Change Contact Information

- 1 Click the Help button. Click Modify Account.
- 2 Select the Contact tab.
- 3 Change your [contact information](#) as needed.

Add Subaccounts

You can add one or more users (subaccounts) to your Mplayer account. Here's one way:

- 1 Click Help to display the Help Desk. Click Modify Account.
- 2 Select the User tab.
- 3 Click the New User button.

Change User Information

- 1 Click Help to display the Help Desk. Click Modify Account.
- 2 Select the User tab.
- 3 Select the user.
- 4 Change [user information](#) as needed.

User Information

User Name	Name of the user you want to display or change information for
Name	Your full name and form of address you prefer.
Email address	Address where you receive electronic mail.
Birthday	User's date of birth. Used to determine game age limits and restrictions.
Usage Limits	Set if you want to be advised when user account reaches a certain number of hours; restrict the user account to a maximum number of hours per day.
Creation Date	Date the user account was created.
Expiration Date	Date the user account expires.
Game Content Limits	Set age limits based on game content ratings for language, sexual content, and violence.

Change Password

1 Click Help to display the Help Desk. Click Modify Account.

2 Select the Password tab.

3 Select the user.

4 Enter a new [password](#) in the Password box.

5 Enter the new password again in the Confirm Password box.

6 Enter the current password for the account you are changing in the Current Password box. You cannot change a password without knowing what it is in the first place. This is to prevent unauthorized people from accessing and changing your password.

Note: Don't forget your password. Don't tell anyone your password. If you are creating a password for a subaccount, only give tell them not to give out their password.

Change Profile Information

- 1 Click Help to display the Help Desk. Click Modify Account.
- 2 Select the Profile tab.
- 3 Click Select to change your player portrait.
- 4 Use the Description area to change or enter a new player description.

View Usage Information

- 1 Click Help to display the Help Desk. Click Modify Account.
- 2 Select the Usage tab.
- 3 Select Summary or Detail. Mplayer displays [usage information](#).

Usage Information**Summary**

Shows the Mplayer areas accessed and the total number of hours and minutes used.

Detail

Shows billing details.

Change Billing Plan

- 1 Click Help to display the Help Desk. Click Modify Account.
- 2 Select the Plan tab.
- 3 Select the type of billing plan you prefer.

Mplayer offers a wide selection of billing plans and packages. There is no charge for changing your plan.

Beta Testers: Let us know what you think about these plans. Too much, too little, have an alternate way in mind? Drop us a note at mpathbeta@mpath.com. (B2)

Change Billing Information

- 1 Click Help to display the Help Desk. Click Modify Account.
- 2 Select the Billing tab.
- 3 Select the user.
- 4 Change [billing information](#) as needed.

View Billing Statement

- 1 Click Help to display the Help Desk. Click Modify Account.
- 2 Select the Statement tab.
- 3 Select the user you want to see a statement for.
- 4 Select [Summary](#) or [Detail](#).

Billing Statement Summary

Display total hours and dollar amounts for this month and last month. Statement shows combined totals for all users.

Billing Statement Detail

Display detailed information about usage totals. Used to calculate billing.

Other Neat Stuff starts here



Need a break from the intense, fast-action gameplay? Drop by the Mplayer Cafe. Hang out, chat with other players, make new friends, and trade tips about your favorite games.

You can get to the Mplayer Cafe:

- From any game lobby. Click the Arcade button and select Online Chat.
- From the Windows Start Bar. Click Programs, then Mplayer, then Online Chat.



Help Desk

Need some help? Want to change your account? Have an opinion about our service? You can do all this and more at the Mplayer Help Desk.

To visit the Mplayer Help Desk, click the Help button. Click the area you want to use or change:

Click	To Get ...
Help	General Mplayer help.
Game/Cafe Help	Game and café help.
Modify Account	View and change your Mplayer account.
Select Portrait	Change your player portrait.
Billing Information	View billing statements.
Create Subaccount	Attach others to your account.
Feedback	Tell us what you think of Mplayer.



Customer Service

Mplayer is committed to providing the most effective service to our members. We provide a wide range of support services for Mplayer service members who need assistance installing and running Mplayer games.

Helpdesk Support

We have a helpline available for telephone support during beta test hours which will be extended as the beta service expands. This line is staffed by an elite group of customer support professionals and supported by quality assurance and programming engineers.

If you are having a problem installing and running games at Mplayer, you can call us at (408) 342-8844. Your call is logged on our automated tracking system.

Online Support

Your comments are very important to us. For this reason, we have created a web page designed exclusively for product feedback at <http://www.mplayer.com/members/mplay-feed.html>.

You can report a bug or other technical problem at <http://www.mplayer.com/members/mplay-cs.html>.

If you prefer to send email, our email address is support@mpath.com. Messages requiring a response will be responded to within forty-eight hours. On average, we have a four-hour response time. If you request a callback in your message, please include the best time to contact you as well as alternative times, if possible.

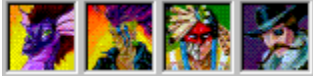
Internet Connection Problems

If you are having problems with your Internet connection, please contact your Internet Service Provider. The Mplayer Customer Service Center does not provide customer service for Internet Service Providers.

If you are having problems with your PSI Internet connection, please call them directly at (717) 770-1705. Their help desk operates 24 hours a day, seven days a week. For contact information for other Internet Service Providers check our online helpdesk at <http://www.mplayer.com/members/mplay-help.html>, or your Internet Provider's service agreement.

Beta Feedback

[Click here](#) if you have comments about our Beta release.



Portrait Gallery

Mplayer's portrait gallery offers an large selection of fascinating character portraits. You can choose a portrait that matches your overall gaming personality, or change it as you play different games. Other players see this portrait when they click your name on the roster.

Glossary

Café room	A place where you can chat with other players without choosing a particular game.
Color palette	A collection of colors you can select from and draw with on the Scribbleboard.
Game lobby	A place where you can view all the game offers for a particular game.
Game offer	How players are joined together so they can play the same instance of a game.
Game offer name	The name given to a game offer when it is created. Game rooms are identified by their game offer name.
Game room	A place where you can chat with other players who want to play the same game and become part of a game launch.
Game launch	something that occurs after enough players in a game room decide to play a game. The game launches and exciting multiplayer action begins.
Games	See Mplayer games.
Game settings	Some games have special settings that determine how the game starts out. The game room moderator controls the settings. Other players can view them and request changes by sending a message to the moderator.
Mplayer account	A user name and password that allows you to sign on at Mplayer.
Mplayer arcade	A place at Mplayer where you can learn about a game and its creators and enter the game lobby.
Mplayer Café	A fun place to meet and chat with other players.
Mplayer games	Games you can play at Mplayer. For some games, you need the Mplayer version. For others, you need the Mplayer extensions to play the game at Mplayer.
Multiplayer	Many players playing a game simultaneously.
Paging	A way to call players who are not engaged in gameplay throughout Mplayer.
Password	A series of 5 to 16 characters that allows you to access your Mplayer account. Your password is like the combination to a vault. Don't give it to others.
Portrait	A graphic representation that appears along with your user name.
Roster	The list of players in a game or café room.
Scribbleboard	A shared whiteboard where you can scribble messages and drawings. Whatever you scribble is seen by all other players in the game or café room.
ScribbleTalk	Specially designed Mplayer software that lets you chat, scribble and talk to other players in lobbies, game rooms, and cafes.
Scribbling	Creating art on the Scribbleboard with the graphics toolset.
Talking	Realtime speech using a microphone.
Text chat	A way to talk to other players using your keyboard. Type text into the chat box in a lobby, game room, or at the cafe.
User name	A unique name that identifies you and your account at Mplayer.

Views & Dialogs start here

In An Mplayer Lobby

Maximize this help window and click an area for a description.



In An Mplayer Game Room

Maximize this help window and click an area for a description.



Hotspots for Lobby Views

Mplayer Game Lobby

An exciting place to meet players who want to play the same game as you do. You can chat with other players in the lobby, browse game offers, visit game offers and join players in a game room.

Game Offers

Displays the game offer icon with the game offer name, number of players in the room, and game attributes. Click once to view game offer information. Doubleclick to enter the game room.

The game offer icon lets you know whether you can enter a room, or play the game offer in the room. [Click here](#) for details.

Game Information

Shows information about the selected game offer.

Players In Lobby

Shows the players in the lobby. Click a name to view the player's portrait and profile.

Portrait

Shows your portrait, or the selected player's portrait. Click Help and Select Portrait to view the portrait gallery and choose or change your portrait.

Back

Click to go back one level. For example, if you are in a game room, you go to the game lobby. If you are in a game lobby, you go back to the game's arcade page.

Arcade

Click to browse the Mplayer games. Doubleclick a game title to go to the game's lobby.

Options

Click to view and change Mplayer options that affect paging, sounds, and the rooms displayed in the lobby. [Click here](#) for details.

Find

Click to page a player at Mplayer. Type message in pager box and send. If you want the player to join you, click Invite Player To Join.

Help

Click to go to the Mplayer Help Desk. [Click here](#) for details.

Close

Click to close the Mplayer window and log off Mplayer.

Maximize

Click to maximize the Mplayer window.

Minimize

Click to minimize the Mplayer window.

Auto-Match

Click to have Mplayer moderate and launch a game. Mplayer transports you to a game room and looks for other players. When Mplayer has found enough players, it launches the game.

Enter Room

Click to visit a game or café room.

Create Room

Click to create your own game offer. You are transported to a game room and become the moderator. Set game options and entice visiting players to accept your game offer. When you have enough players, you launch the game.

Chat Viewport

View messages between players. Use the scroll bar to move message display up and down in the viewport.

Chat Box

Type text you want to send to players and press Enter.

Right-click to change the font style and size, the color, and other chat options. [Click here](#) for details.

Scroll Bar

Drag the button up and down or click either side to view messages that have scrolled beyond chat viewport.

Scroll Buttons

Click to view more game offers.

Game Room Hotspots

Check Game

Click to see if you have everything you need to play the game at Mplayer. (B2)

Roster

Lists names of players in a game room.

M Game room moderator

OK Players ready for game launch.

Back To Lobby

Click to leave the game room and return to the lobby.

Face Panel

Click to show player portraits. Click the Help button and then choose Select Portrait to change.

Scribble Panel

Click to view Scribbleboard and graphics toolset.

Scribbleboard

A shared whiteboard where you amaze your friends with your ability to draw and write colorful message and pictures. Whatever you scribble is seen by all other players in the game or café room.

Drawing Tool Type

Change the type of tool you draw with on the Scribbleboard. [Click here](#) for details.

Drawing Tool Size

Change size of the line you draw on the Scribbleboard. [Click here for details.](#)

Drawing Tool Color

Change the color you draw on the Scribbleboard. [Click here](#) for details.

Game Settings Panel

View or change game settings. Click Check Game button to check game software status. If you are moderator, click Modify Settings button to change settings for your game offer.

Ready To Play?

Click to notify the moderator that you want to play the game. An OK appears next to your name on the player roster.

Ready To Play!

Waiting for moderator to launch game. Click to notify the moderator that you do not want to play the game.

Launch Game

If you are moderator and this button is flashing, you can click to launch the game.

Talk

Hold down and speak in your microphone to talk to other players. For the best results, make sure there isn't background noise that might interfere with your transmission.

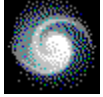
Game Room Status

Room **Type** **Location**



Auto-match

Near



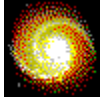
Open

Near



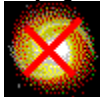
Full/Locked

Near



Playing

Near



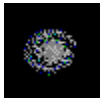
Playing/Locked

Near



Auto-match

Far



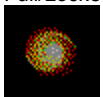
Open

Far



Full/Locked

Far



Playing

Far



Playing/Locked

Far

Button Descriptions

Lobby Buttons



Arcade button. Display Mplayer game arcades. Click game or café to go to lobby. You can also use this button in a game or café room.



Mplayer Options button. Display and change Mplayer options, such as paging, sounds, and displayed rooms. You can also use this button in a game or café room.



Find Player button. Page a player at Mplayer. Click to send message to player. You can also use this button in a game or café room.



Auto-Match button. Let Mplayer find players and launch a game for you.



Enter Room button. Enter the selected game or café room.



Create Room button. Create a new game offer and its game room or a new café room.



Back button. Click to go back one level. For example, if you are in a game room, you go to the game lobby. If you are in a game lobby, you go back to the game's arcade page. You can also use this button in a game or café room.



Check Game button. Click to see if you have the game installed on your system and it's ready for you to play at Mplayer. If you are in an auto-match game room, click Check Game button on the main panel display. If you are in any other type of game room, click Game Settings and then click Check Game.

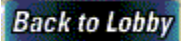


Help button. Go to the Mplayer Help Desk. You can also use this button in a game or café room.



Close button. Close Mplayer window and log off.

Game Room Only



Back To Lobby button. Click to leave the game room and return to the lobby.



Ready To Play? button. Notify the moderator that you are ready to play. Not seen by moderator.



Ready To Play! button. Shows that you will be part of the game when it launches.



Game Launch button. Click to launch game when flashing. Seen by the game room moderator.



Player Portrait and Talk button. Hold down Talk button while speaking into the microphone.



Scribble Panel button. Display Scribbleboard and graphics toolset



Face Panel button. Display player portrait and profile.



Game Settings Panel Game button. Display settings for game and access Check Game button. If you are moderator, click Modify Settings to change settings for your game offer.



Drawing Tool button. Change the graphic tool you are scribbling with. Display the Scribble panel to use this button.



Pen Size button. Change the size of the pen and line tools. Display the Scribble panel to use this button.



Color button. Change the color you are scribbling with. Display the Scribble panel to use this button.

AUTO-MATCH

Check Game

CREATE ROOM

**READY TO
PLAY?**

**READY TO
PLAY!**

AUTO-MATCH

New Game Offer Dialog

Area	Description
Offer Name	The name used to identify a game offer and room. You can use up to 40 letters, symbols, and numbers.
Moderator Comment	Enter enticing descriptions and comments designed to lure players into your game room.
Number of Players	The minimum and maximum defaults are set up according to the game you are playing and how it is set up at Mplayer. You can raise the minimum, or lower the maximum number of players allowed in your game.
Age of Players	The minimum and maximum defaults are set at Mplayer according to the game's rating. You can raise the minimum, or lower the maximum age allowed in your game.
OK	Click to create game room and become moderator for the room.
Cancel	Click to stop Mplayer from creating a new game room.

REMOVED FROM QUICK START

Choose Mplayer Game

- 1 Browse the arcades until you find a game you want to play.
- 2 Click Game Information to check out the game's requirements and installation procedures.
- 3 Install the game based on the game's specific instructions.
- 4 From the Windows Start bar, choose Programs, then Mplayer, then Games and click the game you want to play. Mplayer asks for your user name and password and transports you to the game lobby.

