

Terminal Velocity

Created by Terminal Reality Inc.™

Published by 3D Realms Entertainment™

3D Realms is located on the World Wide Web at <http://www.3drealms.com/>.

Terminal Velocity™ is a high-speed space combat game. You are a pilot in the Ares Squadron, flying the fastest, most dangerous craft ever made. Considering you're flying the TV-202 and still alive, you may be the luckiest flyer around.

At Mplayer, you engage up to three other players in a vicious aerial dogfight over the planet. Chase your opponent over open terrain, through canyons, and over mountains. Dive bomb through cloud cover to surprise and annihilate your enemy. Sophisticated and powerful weaponry is at your command.

Don't delay. Join the exciting, action-packed aerial combat at Mplayer today.

[Click here](#) to find out what you need to play Terminal Velocity at Mplayer.

[Click here](#) to learn about Mplayer, the only place to play fast-action, multiplayer games on the World Wide Web.



1996 © Mpath Interactive, Inc.

Mplayer is the first multiplayer game service that brings the excitement of realtime, fast-action multiplayer games to the Internet's World Wide Web.

Wander through Mplayer's Web pages, sampling the virtual arcades until you find a game you want to play. Check out the latest multiplayer games and test your skills against millions of potential opponents. Meet other players who want to play the same game you do. Participate in contests, tournaments, and special events all oriented toward meeting other gamers and encouraging friendly competition.

And if this isn't enough, Mplayer is speech-enabled, so you will be able to taunt your opponents and hear them scream with laughter as they match their wits, intelligence, and dexterity against you. In addition, text, scribble, and voice-based chat areas will provide a place to hang out with friends, meet other players, and even plot winning strategies with their teams.

What are you waiting for? Join the club. Sign up to get your free software and trial offer.

Visit Mplayer on the World Wide Web at <http://www.mplayer.com/>.

Requirements**Hardware**

- 486/100 MHz or faster
- Microsoft-compatible mouse
- Keyboard
- Color monitor with SVGA graphics capability
- Windows 95 compatible soundcard (recommended)
- Microphone, if you want to communicate using speech at Mplayer

Software

- Windows™ 95
- Mplayer software and Mplayer account (user name and password)
- Shareware version of Terminal Velocity with Mplayer extensions

Memory & Diskspace

- 8 MB RAM
- 10 MB diskspace available on hard drive

Notes

These are the requirements for the shareware version of Terminal Velocity.

[Click here](#) for installation and operating instructions.

Installation

If you have already installed the Mplayer software and the shareware version of Terminal Velocity with the Mplayer extensions from the Mplayer Starter CD, [click here](#). If not, do this:

- Step 1** Install the Mplayer client. Insert the Mplayer Starter Kit CD in your CD-ROM drive and run setup.exe, or download the Mplayer client at <http://www.mplayer.com/members/mplay-gizmo.html>.
- Step 2** Install the shareware version of Terminal Velocity with the Mplayer extensions. Insert the Mplayer Starter Kit CD in your CD-ROM drive and run setup.exe, or download Terminal Velocity with the Mplayer extensions at <http://www.mplayer.com/members/game-tv-s.html>.
- Step 3** Review the readme file for last minute information.
- Step 4** To find other Terminal Velocity players and play, [click here](#).

Notes

- Turn off Microsoft System Agent, email notifiers, and any other applications that may interrupt your game. Notifications tend to halt your system or the game.
- If you are using a joystick, you need to calibrate the joystick in Windows 95 before you play Terminal Velocity.

Launch Game

Step 1 Sign on Mplayer.

From Windows 95, click Start|Programs|Mplayer|Games|Terminal Velocity, or find and click mptvs.mpi.

From the World Wide Web, point your browser at <http://www.mplayer.com/members/game-tv-s.html>. Click Play Now or Browse Game Sessions.

Step 2 Use one of these ways to find players and launch the game:

Click the Auto-Match button to let Mplayer moderate the game room. Mplayer transports you to an auto-match game room. Wait for Mplayer to find other players and launch the game.

Doubleclick a game offer to enter a game room and chat with other players. Click the Ready To Play? button to tell the moderator you want to play. Wait for the moderator to launch the game.

Create a new game offer. Change the default game startup settings by clicking the Game Settings button. Chat with players who visit your game room, encouraging them to accept your game offer. Launch the game when you have enough players.

Step 3 Set up Terminal Velocity:

1. Press Esc, Space, or Tab to move through opening screens until you see the Main Menu.

2. If you haven't previously set your options, choose Options, then Control Options, and select the device you are using to control your ship. Press Esc to return to the Main Menu.

If you are using a joystick, calibrate the joystick in Windows 95 before you play Terminal Velocity.

3. Choose Play Now.

4. Choose a ship. There are four ships to choose from: two gray ships and two black ships. If you have chosen Team Dogfight, the ship determines what team you are on. Two ships are on the Arctic Team and two are on the Canyon Team.

5. Enter your name.

6. Enter your call sign.

Moderator Only

1. Select Dogfight or Team Dogfight. Dogfight is everyone for themselves, and Team Dogfight teams people based on the type of ship they choose.

2. Select a planet (one of two). Battledrome is green making it easier to see what's going on.

You probably already know how to play Terminal Velocity. If not, [click here](#).

Stop Playing

- 1 Press ESC.
- 2 Click Quit.
- 3 Click DOS.

You end up in a game room with anyone who left the game at the same time as you did. You can

- Play again.
- Click the Arcade button and doubleclick a game title to go to a different lobby.
- Exit the game room.
- Log off Mplayer.

[Click here](#) for troubleshooting tips.

Troubleshooting



Nothing happens when I click the mptv.mpi file.

- Try coming in through Mplayer's Terminal Velocity page. Point your Web browser at <http://www.mplayer.com/members/game-tv-s.html>. Click Play Now or Browse Game Sessions.
- Is your modem turned on? If no, turn it on and try again.
- Is it connected to working phone line? If no, report it to the telephone company.
- Are you able to connect to other Internet services, such as email, Telnet, or FTP? If no, try changing your local access number and see if you can connect.
- Is your account information current? If your credit card expires, you may need to provide new information.
If you still can't access your Internet account, check with your Internet Service Provider.



The sound doesn't work.

Are you getting sound for other programs? If no, you may have a hardware problem. Here are a few suggestions:

- Check your headset or speakers with a different device.
- Check that your soundcard is seated properly in your system.
- Check that you specified the correct soundcard in the configuration section.

For additional support, contact your soundcard vendor.

Gameplay

[Click here](#) for general information.

[Click here](#) for hot keys.

[Click here](#) for game options.

[Click here](#) for strategy and tactics.

General Information

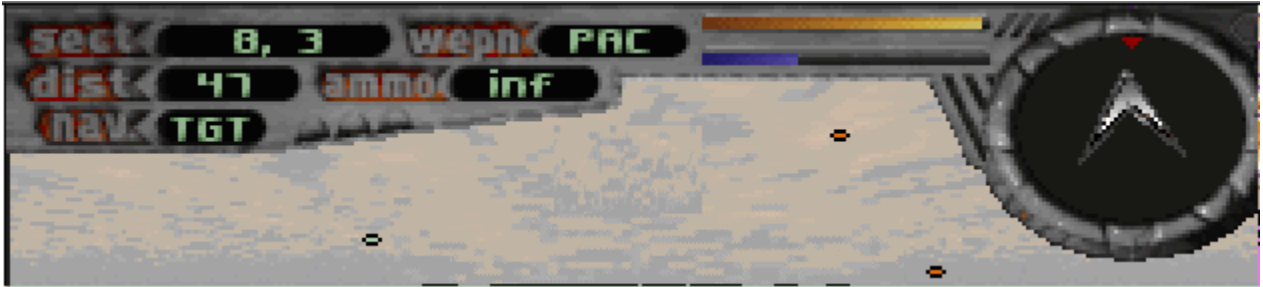
[Click here](#) for cockpit information.

[Click here](#) for short range radar information.

[Click here](#) for weapons and powerups information.

In the Cockpit

First, maximize this help window. Then, click an area for a description.



During gameplay, C toggles Cockpit display. For other hot keys, [click here](#).

Cockpit Hotspots (only include as hotspot or ISMAP text.

SECT

Shows map sector coordinates

WEPN

Shows current weapon: PAC, ION, RTL, MAM, SAD, SWT, or DAM

DIST

Shows distance to objective

AMMO

Shows amount of remaining ammunition for current weapon

NAV

Shows current navigational objective

Red Line
Shows shield status

Blue Line
Shows throttle status

Short Range Radar

Helps you find and track enemy ships so you can blow them out of the sky.

Playing Field

Where the action takes place. Blips are long and short range targets. Hit Tab to toggle blips.

Game Options

Sound	Configure the sound effects and digital music
Graphics	Configure the game resolution and quality of displayed graphics
Controls	Choose the input devices and configure them
Level Briefings	On/Off
Cinematics	On/Off
Demos	On/Off

Hot Keys

SPACEBAR	Fire
BACKSPACE	Display information about current weapon
TAB	Toggle radar display (long range radar shows on view screen)
ALT	FLY (Afterburner)
C	Toggle Cockpit display
A/Z	Throttle UP/DOWN
T	Talk
1	PAC (Plasma Assault Cannon)
2	ION (Ion Burst Cannon)
3	RTL (Rapid Targeting Laser)
4	MAM (Manually-Aimed Missiles)
5	SAD (Seek And Destroy)
6	SWT (Shock Wave Torpedoes)
7	DAM (Discrete Annihilation Missile)
F2...F10	Mercilessly taunt your opponent

Short Range Radar Display

The short range radar displays all air/ground targets, tunnel entrances, and any powerups you have left behind.

Yellow	Tunnel Entrances
Green	Ground Targets
Orange	Air Targets
Pulsing Blue	Powerups
+	Target above you
-	Target below you

Weapons and Powerups

PAC	Plasma Assault Cannon. Ammo: Infinite
ION	Ion-Burst. Ammo: 100 units
RTL	Rapid Targeting Laser. Ammo: Infinite
MAM	Manually-Aimed Missiles. Ammo: 40 units
SAD	Seek And Destroy guided missiles. Ammo: 20 units
SWT	Shock Wave Torpedoes. Ammo: 20 units
DAM	Discrete Annihilation Missile. Ammo: 1 unit
FLY	Afterburner. Fuel: 120 units
Shield	Restores shield to full strength
Power Core	Increases shield by 10 percent
Invincibility	Boosts shields and adds invincibility. Duration: 30 seconds
Invisibility	Boosts shields and adds invisibility. Duration: 30 seconds

Strategy and Tactics

- n Avoid doing hard 180 backspins as they may result in unwanted collisions with enemy ships.
- n Use the afterburner to fly between targets and checkpoints quickly. But watch your fuel! You can't fire your weapon while using afterburner.
- n Bunkers always contain a powerup or weapon. To pick up one of these items, fly through it.
- n Reenter tunnels multiple times to collect more powerups.
- Powerups reappear about 30 seconds after you fly through them. Hang up around weapon powerups to max out the power for a weapon.
- n Certain weapons such as the PAC, ION, and RTL can be increased from their base power. The second time you pick up a powerup, the weapon has twice the power with 100 extra shots. The third time gives you four times the powerup and 200 shots of ammo.
- Use Ion bombs to inflict heavy damage on ships within a particular range. Ion bombs send out balls of lightening and kill in about four hits -- lasers take more like six to eight hits per kill.
- Fly around until you locate the shield powerup. Write down the coordinates. Return to the same location to replenish your shields as needed.
- Shields are set to 100% after you crash and burn, but you lose any weapons you picked up.
- You can hang out around the shield powerup and attack your opponents as they attempt to replenish their shields. Watch out, though. You probably won't be the only one using this strategy.
- Go from full throttle to no throttle. Your opponent may fly right by like in Top Gun and you can shoot the ship as it passes you.
- Press Enter to track a ship you fired on. Keep firing and blow it out of the sky.

For New Players

- Pick up more powerful weapons. To do this:
 1. Blow up a dome.
 2. Fly through the floating weapon to add it to your arsenal.
 3. Use the keyboard to change to the weapon. [Click here](#) for hot keys.
- Power-ups restore your capabilities. They affect weapons, shields, ship power, and afterburner. Generally, these appear when you destroy enemy fighters and installations. They are also in tunnels.
- There are two kinds of radar: mission radar and HUD (heads up display).
 - Mission radar has a chevron that points to your next mission target and provides information on enemy fighters and installations. It is part of the cockpit display. Press C to toggle the cockpit display.
 - HUD superimposes enemy positions (colored blips with minus and plus signs) on your main viewing screen. Press Tab to toggle the HUD display.
- When you run into something or someone rams you, your screen goes red and you bounce off the object randomly (like bumper cars in the sky). You may end up going in a completely different direction.
- Press F1 to get help while you playing Terminal Velocity.

