



R E V I E W

WinOnline

Microsoft
VISUAL BASIC
2.0

Issue No.
65

November 15, 1992

Windows



Me
Program...



(Click Above For Table Of Contents)

About **Windows OnLine™**

Windows OnLine™ is an on-line (modem) service dedicated to supporting Windows users and Windows network professionals. **WOL** prides itself on having the most complete and up-to-date library of Windows shareware in the world. We have over 8,000 Windows 3.x programs and files to download. With **13** phone lines, (all equipped with **US Robotics high speed dual standard modems**), operating 24 hours a day, 365 days a year... there are no busy signals.

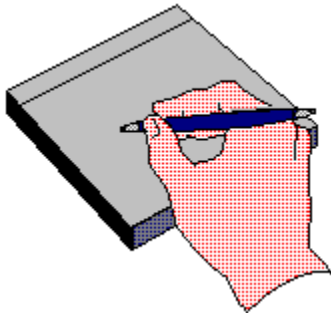
WOL is growing rapidly with **thousands of callers** directly using the service. We advertise in national publications as well as several computer newspapers. **Call today for your free trial** and see why **WOL** is the ***Worlds Premiere Windows On-line Service.***



About **Windows OnLine™** **REVIEW**

The **WinOnLine™ REVIEW (WOLR)** is an electronic magazine that is distributed worldwide to major on-line services on the 1st and 15th of each month. It is estimated that each issue is read by 50,000 on-line and network users. (It is reported that there are over 40,000 BBS's in the USA alone as of 1992). This unique creation is actually a Windows HELP file. All Windows users can view it with its **hypertext, built-in search, and pop-up color graphics.**

The **REVIEW's** articles are limited in scope to allow us to present our readers both a diversity information and to maintain a manageable file size. Subject matter includes all aspects of Windows and its associated applications and utilities. Also covered are, Industry and New Product News, Communications and other GUI subjects, etc.,.



Why not

Write for the REVIEW

Do you like to test shareware programs? Do you enjoy giving opinions on the latest commercial Windows software? Do you have an interest in Windows software, hardware, programming, etc., and the time to write an article or review? Do you like working with graphics? We are interested in adding a few quality Freelance writers for the **WinOnLine™ REVIEW.**

Freelance writers can submit their article whenever they wish and are only required to include a .RTF or .DOC file and the .BMP graphics for their article. We will prepare your help file for you. **You can become part of our publication, so call us today.**

The **WOLR** pays a fee for each article we publish. Why not get both, publicity for yourself, and cash to spend. ***Give your writing career a kick in the pants!*** For complete details on how you can become a paid writer, download our **WRITERS GUIDE** named **WOLWG11.ZIP**. It is available for download on many BBS's around the world and on CompuServe. You can also download it directly from **Windows OnLine™ (510) 736-8343 (modem).**

Rich Young - Editor



Copyright © Information

The **R**EVIEW is a product of,

Windows OnLine™, no reprinting of any portion of this publication is permitted without the express written permission of Frank J. Mahaney of **Windows OnLine™**.

Sysops and Corporations **may freely offer the .ZIP file for download** by their users. You **may not display the contained .HLP file** as bulletins, news, help files, etc., on any BBS or network, nor are you permitted such reprinting or display of these files, except as otherwise expressly granted, in writing, by **Windows OnLine™**. Subscriptions are available to Corporations who wish to offer the HLP file on their Windows Networks. For subscription information call our voice number (510) 736-4376.

All articles are copyrighted by their authors and upon publication all rights are sold to and owned by **Windows OnLine™**. Opinions presented herein are those of the individual author and do not necessarily reflect the opinions of **WOL** or the **REVIEW**.

Windows OnLine™

(510) 736-8343 bbs

(510)736-4376 Voice/Fax

Copyright Notice: The entire contents of this issue and all issues of the REVIEW are copyrighted by Windows OnLine and Frank J. Mahaney
All right reserved Copyright © 1992, Windows OnLine



Call Windows OnLine™ Today!

(510) 736-8343 BBS

Call Windows OnLine™ today!

(510) 736-8343 bbs

Frank J. Mahaney

Publisher

(510) 736-4376 Voice/Fax

Windows OnLine™

Box 1614

Danville, CA 94526-6614

Copyright © 1992, Windows Online™



Barry Seymour
Bob Gollhur
Hugh Hardie

Publisher : Frank Mahaney
Editor : Rich Young
Graphics and Design
Derek Westfall Randy Wong

Darrell Poteet
Scott Drassinower



from the **Publishers Desk... some Commentary**
by **Frank J. Mahaney**

This column will be filled with OPINION. It will be, I hope, an interesting view of this publication (the WinOnLine REVIEW), our on-line service (Windows OnLine) and the on-line world in general, at least as I see them. I'm really not much of a writer, as you will notice. In fact, I never really liked writing, primarily because I can not spell. 😊 Spell checkers and age have helped me improve on this deep seated problem, but only just a bit. I do intend to give you my slant on the things. This commentary will be placed in this location in each issue.

Changes

Have you noticed all the changes to our magazine? As many of you know, we were called the *Weekly* until 11/1/92 (issue #64) when we became the **WinOnLine REVIEW**. We actually started out as a daily NEWS publication for Windows OnLine. The NEWS began when the on-line service was born in November 1990. We displayed a new article each day in the NEWS. Readers would have to call WOL to see the NEWS. On April 24, 1992 we became the graphical *Weekly* and began to distribute our magazine once a week in the form of a Windows 3.0 WRITE file. We continued with the issue numbering system from our NEWS issues and thus started with Issue No. 38 when the *Weekly* was born. The WOL NEWS made up the first 37 issues.

While the new weekly format helped us in many ways, it also presented several new problems. One problem was difficulty in attracting new writers to submit columns and reviews to our magazine. For some unknown reason to us, very few of you seem to want to be published in our magazine. Thus, we are struggling to get material for each new issue. The second main problem was when we first converted to the Weekly format. The WRITE file format did not handle graphics the way we wanted. Severe limitations as to graphic size was very troubling.

We have always wished to provide a publication that all Windows users could read. We therefore must use tools (WRITE.EXE and HELP files) that Microsoft has provided with Windows. We have further decided to limit our graphic colors (16 colors) and resolution (640x480) in our magazine. These limitations are placed on the publication, for the moment, so that almost all of Windows users can read our magazine, AND because these limitations allow a smaller compressed file size. We all know about downloading large files and the time and cost involved. Our file size, as it is, is one of our great limitations.

Ya see how us non-writers start to ramble?

Changes

In April of 1992
we picked up with issue No. 38
we become the *Weekly*
in Write file format
including 16 color graphics
and began distribution to all bbs's
and on-line services
FREE.

So why change? As I mentioned before, we just could not get the graphics the way we wanted them to be, both "big and bold". Then, Barry Seymour an excellent writer and Visual Basic programmer, suggested we use the built-in Windows help system to create our magazine... that is, he suggested we create a HELP, (.HLP), file. Little did we know what a big change that would make.

More Changes

June 13, 1992 the *Weekly*
(Issue No. 45)
was distributed in HELP (.HLP) file format,
for the first time, and has remained that way until today.
Includes Hypertext and popup graphics
much more color and is still **FREE.**

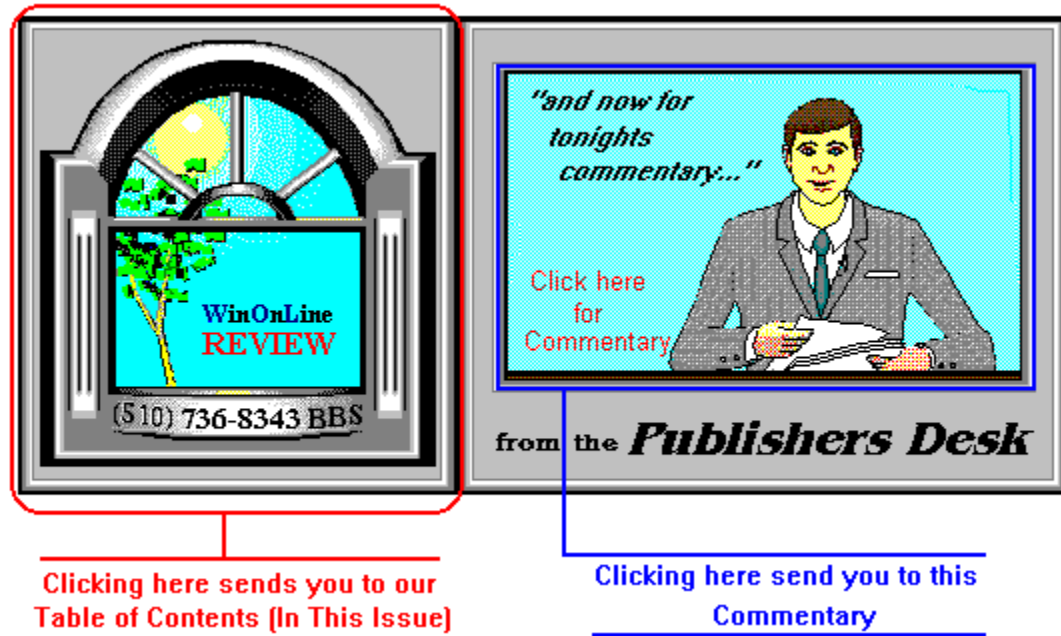
That takes us up to our latest improvements. We did not change our file format this time but instead we changed our distribution dates. We also wanted to add various style and technical improvements to the publication. Thus, distribution and our name were changed. The *Weekly* became the [WinOnLine REVIEW](#) and is now published twice a month on the 1st and 15th. This latest change has also allowed us to improve our magazines layout and content while still getting a little sleep during each month.

Still More Changes

As of Issue No. 64 11/1/92
the [WinOnLine REVIEW](#) was born.
Sporting a new layout and cover design
more content per issue and still **FREE.**

That pretty much brings us up-to-date on how we got here.

I wanted to mention a few of the recent technical improvements to our publication, but we needed a little background and foundation first. For those, like me, that like to browse around and look into all the corners, I'll mention a few things that may not be too obvious. Notice that we have in some places, incorporated **HOT SPOTS**. That is where only a part of a graphic is HOT and will cause a pop-up or jump. The tip-off is to move your cursor around a graphic, to see where the cursor turns into a hand. Where you see a hand, you have found a HOT SPOT. With our newest HELP tools we could create several different hot spots on each graphic; each HOT SPOT could pop-up a different screen.



Notice that the main top graphic on page two, (the graphic you used to read this text) has **two** different HOT SPOTS. This first one is the entire left side of the graphic that jumps to the Table of Contents (In This Issue). This second jump is located on the same graphic and is the window that contains the depiction of me, the publisher. It jumps you to this Commentary. There will be additional, multiple HOT SPOT graphics in the future, *so move that cursor around and click like crazy.*

News

by
Randy Wong

Notice that the title bars at the top of each article/review that say... for example, **NEWS by Randy Wong.**

This bar stays visible on the top of your screen and the article scrolls under the graphic. That is new and is a change I had not personally seen before. It's there to remind you where you are and what you are reading.



Look at the buttons that read **Contents - Search - Back - History - Prev Page - Next Page**. Notice that the last two differ from that which you have seen in the past. We have noticed that some of our readers have not used the **forward and back** buttons to move easily from page to page. We have now retitled those buttons to make it their purpose clearer.



Notice, when you iconize our magazines help file that you get our WOL button (sun in window - Hot Stuff TOO!). With other HELP files you will get the help icon.



There is much more, but I'll bore you to tears if I keep this up. I'll try to keep you up to speed with our publication in future commentary. One other note, Randy Wong is our expert and has been completely responsible for all technical changes to our help file. So address your questions and thanks to him.

Support

This may be a good place to tell you all that we really need and desire **YOUR help and input**, as to how this publication should evolve in the months ahead. ***Do you really care if we keep this publication going?*** I know that we are read by tens of thousands each week. But we receive very few comments from our readers. Consider that this is a FREE publication sponsored by Windows OnLine memberships. This magazine's benefit to WOL, is to demonstrate to our readers, the quality of service we offer. We hope readers will then visit Windows OnLine and purchase a membership. That membership will in-turn support this magazine. **Consider a visit today - call WOL by modem 510-736-8343.**

Give a Gift

Purchase a membership for a friend as a Christmas or Birthday Gift. You will be supporting this magazine and assuring its future and getting a great on-line membership to WOL to boot. Click the button, (our icon), to view our membership application. Notice the menu bar on the top of this help file, where it says **PRINT** inside the menu it says **PRINT-TOPIC**, this will allow you to print our membership application. Print the application and send in your check

or fill in the credit card information, sign the form and mail it in. Be sure the **sign-in name** and **password** are the exact ones the member will use at WOL... Example: "Bob" vs. Robert.



Direction

What do you want to see us do differently? We would love to have your input. Always keep in mind our problem and limitation with our file size getting too large. We really can use your suggestions so please speak up. Consider calling the service and writing a message on-line or write us a note and mail it to:

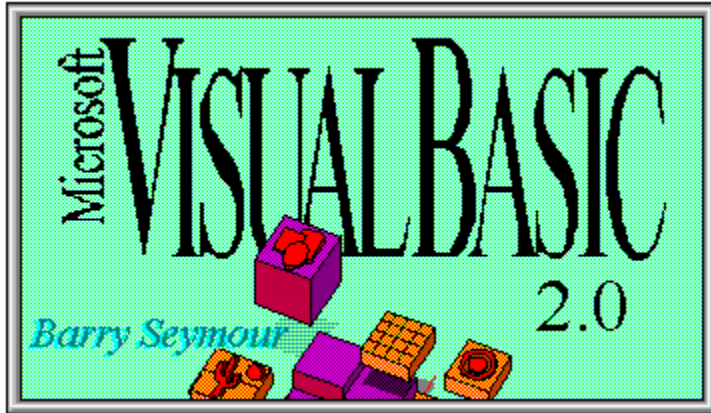
Frank J. Mahaney
Publisher
Windows OnLine
Box 1614
Danville, CA 94526-6614

Or call me at 510-736-4376

That's it for this time -- I'll try not to be so long-winded in the next issue -- for the moment ... *that's the way I see it!*

Frank J. Mahaney
Publisher

Cover Story



(Click)

In this Issue:

(Click all Buttons)

News



Interesting Computer News, by Randy Wong



New Product News, by Rich Young

Features



Windows Tips, by Hugh E. Hardie
Fonts Revisited
Custom Panel



Commentary, by Bob Gollihur
Shareware Wishes



Networking Windows, by Darrell Poteet
Have It Your Way - Customizing Windows Installations



Interesting Developments, by Randy Wong

Commercial Reviews



Visual Basic 2.0, by Barry Seymour



SynApps Synergy, by Scott Drassinower



FaxIt For Windows, by Randy Wong

Shareware Reviews



ArcMaster for Windows, by Rich Young

On The Lighter Side



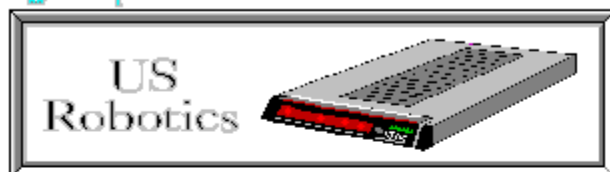
WinGrin, by Bob Gollihur
Mystery Solved?...

The Marketplace



Modems for Members
Save big time on file transfer costs!

High Speed Modems for Members



The Best For Less !!

WOL has special pricing for its membership on US Robotics Modems.

\$349.00 for a USR Sportster Internal PC/FAX 14,400 bps v.32bis

-OR-

\$369.00 for a USR Sportster External/FAX 14,400 bps v.32bis

USR 14,400 modems will allow compressed files transfer at speeds of 1,650 CPS

Windows OnLine™ sells all US Robotics products - Call us with your order

Consider membership with **Windows OnLine™** for the latest Windows shareware and now outstanding modems at fabulous prices.



Microsoft Corp.'s Bill Gates and a group of his officers recently told the press about several new products coming in the future. In late 1993, Microsoft will be introducing a Windows NT Enterprise Message Server. Approximately at the same time, Hermes will be released. Hermes is the code name for Microsoft's enterprise system manager. Hermes will monitor concurrent users on an application, and query system activity or usage. It will even monitor disk space, alerting administrators when space is low. There was also an unnamed technology that will integrate fax with e-mail. Microsoft's object oriented database management system, code name Cairo, will be announced sometime in 1994. Microsoft has also been demonstrating Windows for Workgroups, DOS 6.0, Access for Windows, FoxPro for Windows, and a 32 bit Excel for Windows NT at various conferences. Access for Windows is Microsoft's first database product. It has an introductory price of \$99.00 until January 1, 1993, then it will jump to the retail price of \$695.00. Windows for Workgroups, is following suit, and has an introductory price of \$69.00 until January 1, 1993, then the price will go up to \$695.. Video for Workgroups will be added to the new Windows networking software later this year. This new feature will allow users to share video files and send video mail messages. At Fall Comdex, Microsoft will introduce FoxPro for Windows and an update to FoxPro for DOS.



As the number of modems with fax capabilities increases, the need for better fax software is required. Several vendors have now released upgrades to their earlier fax products. Heading the group, Delrina WinFax Pro 3.0 upgrade includes new enhancements, such as optical character recognition (OCR). With a new fancier look, version 3.0 sports an advanced phone book that can access dBase files, plus support for Microsoft's Object Linking and Embedding (OLE) functions. Registered users can upgrade to this new version for \$49.. Eclipse Systems is shipping Eclipse Fax 1.2. This upgrade now supports Class 1 fax modems as well as Class 2 fax modems. The upgrade for registered users is \$50.. Bit Software has stated that there will be an upgrade for BitFax for Windows available in December. It will sport a new, improved phone book management system. The price on the upgrade is expected to be \$79.. SofNet is also preparing to upgrade FaxIt for Windows. Their product will have a new name, FaxWorks For Windows. This new version will include optical character recognition (OCR), an improved phone book, and several other enhancements.



32-bit Word Processing



Leading the pack in announcing a move to Windows NT, is none other than WordPerfect Corp. WordPerfect is developing a 32-bit version of its flagship word processor for the 32-bit Windows NT operating system. Using Windows NT, WordPerfect will have improve performance over the current WordPerfect for Windows version. It will still retain the graphical look, but will have better multitasking capabilities. It will include support for electronic messaging on networks. WordPerfect will be adding Pioneer Software database Q&E technologies to WordPerfect for Windows. WordPerfect for Windows will increase its file access to several more file formats, which includes Excel files, DB2, Btrieve, Oracle, Sybase, NetWare SQL, and many more.



Email Standard Rocking



Lotus's Vendor Independent Messaging (VIM) application programming interface (API), Lotus Development Corp. will make the first move in communicating with Microsoft's Messaging Application Programming Interface (MAPI). Displaying leadership, Lotus will write the necessary code to enable VIM applications to communicate with MAPI applications. Lotus will develop a free MAPI Dynamic Link Library (DLL) for VIM developers. This is a move to encourage more developers to write for VIM and not worry about compatibility problems with MAPI. Next, Lotus is claiming that the MAPI 1.0 specifications are incomplete. Microsoft confirmed that the specification is an early release of the documentation, and are not yet complete. Lotus will also be adding support to X.400 API Common Mail Calls specifications, for which Microsoft has already announced its support.



Microcom Gets Faxie



Microcom Inc. is now including facsimile capability in its Microporte 4232bis portable modem. The modem with fax would allow Windows users to transmit fax over cellular and standard transmission at 9600 bits per second (bps). The modem transmits data over cellular lines at 30 Kbps and over standard telephone lines at 57.6 Kbps. Microcom's Microporte 4232bis with fax will sell for \$899., and earlier Microporte modem users can upgrade to the fax model for \$399..



Helping Hand



WexTech Systems Inc. is shipping version 1.1 of its Doc-To-Help product. Doc-To-Help is a hypertext word-processing utility. It will assist users in creating Windows Help files. The upgrade features faster performance, improved multi-file support, enhanced memory usage, and is more user friendly. Doc-To-Help version 1.1 is priced at \$395., and registered users will get a free upgrade.



Downward Spin



As the PC price war rages on, vendors continue to cut their product prices even lower. Some vendors are introducing lower priced models, in order to stay in the game. AST Research Inc. has lowered its Bravo product line by as much as 33%. Digital Equipment Corp. has introduced a low priced portable notebook, the DECpc 325p. This 5.9 pound notebook is packed with a 386 SL processor for \$2,620.. NCR Corp. has released their Intel 386SX based System 3225 for \$967.. Toshiba America Information System Inc. has lowered prices of its line of PCs and notebooks between 14% and 25%.



Gathering Of The Vendors



In order to gather enough steam to make some standard changes, several desktop vendors are forming their own committees. IBM Corp., Hewlett Packard Co., Microsoft Corp., Novell Inc., and a couple of others have formed The Desktop Management Task Force. They will provide a common standard to access desktop information. Digital Equipment Corp., Microsoft Corp., Bell Atlantic Business Systems, Olivetti, and Sun Microsystems Computer Corp. formed The Distributed Support Information Standard Group. This group will define the objects within a desktop. These objects will be called the Management Information Base.



Get Your Free Updates



Currently there are several Microsoft maintenance releases in the queue. Word for Windows is currently at version 2.0b. Version 2.0b corrects several minor bugs, added a Product Support section in the Help file, a blank screen feature, enhanced support for Excel and Mail applications, and improved the WP file filter. There is also a maintenance release for Excel, version 4.0a. This version corrects several minor problems and adds support for the Allways file format. If you are into Microsoft entertainment packs, then Vol. I has moved up to version 1.0b. These maintenance releases are free to registered users. For more information, call Microsoft at 1-800-426-9400.




Snuffing Out Another BBS



Another electronic bulletin board system, APL, has been raided. This time, the charges were from Aldus, Autodesk, Lotus, Microsoft, Novell, and WordPerfect. Federal Marshals raided APL for illegally allowing the uploading and downloading of commercial software by their members. Hardware and software were confiscated, which total about \$125,000..

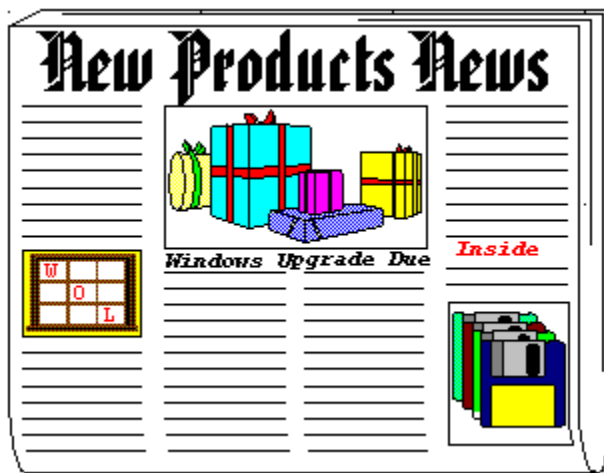


Randy Wong 



Computer News & Product Reviews
Windows OnLine™ IDS





by Rich Young

Visio

A Windows Drawing Program

Shapeware Corporation has announced Visio v1.0, a new kind of drawing program for Windows 3.1. Designed for business and technical users who need to create drawings or diagrams but are not graphics specialists, Visio makes it easier to incorporate drawing into everyday activities.

A New Approach

Current graphics tools are not designed for the large majority of computer users. Visio addresses this problem with a new metaphor for drawing: an alternative to the "blank page" that users traditionally face when they begin a computer drawing. Shapeware calls this approach "Drag and Drop Drawing."

Visio provides ready-made stencils of shapes, specific to different tasks (e.g., flow diagrams, business models, engineering schematics, organizational charts, facility plans, network layouts), that can be used much as plastic stencils are used with pen and paper.

Users simply click on shapes from the stencils, drag them to Visio's drawing area and drop them into place. This drag and drop operation makes drawing far simpler than other kinds of drawing and illustration software. Once in the drawing area, the shapes can be easily manipulated to create any kind of drawing or diagram.

As a result of its streamlined process, Visio lets users focus on the messages they want to

communicate rather than on the mechanics of drawing. Importantly, Visio provides a better alternative to the options most users face, which include sending drawings out to graphics specialists, drawing by hand on paper or not incorporating graphics at all.

More Than Clip Art

Visio's shapes are more than clip art. They are SmartShapes: "intelligent" shapes that are programmed to behave as a user would expect shapes to behave. As a result, they make drawing both easier and more intuitive. Unlike the static shapes included in other drawing programs, SmartShapes can assume different forms, proportions, colors, and other properties depending on the context in which they are used.

Every SmartShape is backed by a spreadsheet, the ShapeSheet, that defines the shape's geometry and properties in different situations. With ShapeSheets, advanced users can define the behavior of SmartShapes or create new, useful shapes.

Specific Drawing Challenges

Visio's large number of stencils (15 stencils with more than 300 intelligent shapes) means that people with very different jobs can use the same program to solve their specific drawing needs. In addition, because Visio's basic drawing process is the same regardless of the actual shapes chosen, users can cut training time - once they perform one task with Visio, they can perform them all.

Visio offers similar options with its drawing tool set, which can be used in addition to the stencils. Users can select a single drawing tool, the pencil, to create any original line or arc shape. Using gesture recognition technology, the Visio pencil knows from the way users move the mouse whether they want a straight line or a curve, and then display the results with mathematical precision. Those users that prefer multiple tools can select line, arc, rectangle or ellipse tools from Visio's tool set.

Visio also fully supports Windows Object Linking and Embedding (OLE), as both a client and a server. This means that drawings can easily be incorporated into documents, reports, presentations, forms and other files, and material from other applications can be easily incorporated into Visio drawings.

Other Feature Highlights

Integrated Text. To add to a drawing, select a shape and start typing.	Global Editing. Change all copies of a stencil shape by editing the master shape.
Styles. Create a style for text, line weight, fill pattern or other attributes and apply it to shapes.	Scaled Drawing. Work in any measurements or units that make sense for a drawing, then print precisely in the scale required.
Glue and AutoConnect. After a user draws a line between two shapes, either shape can be repositioned without breaking the connection.	Fragment, Union and Combine. Split a single shape into separate pieces and join shapes to create special effects or complex structures.
2-D to 1-D Conversion. Convert two-dimensional shapes into one-dimensional shapes that act like lines.	Rotation. Rotate a shape to any angle around its center, or move a shape's axis from the center to any other location.
Floating Point Precision. Draw, scale and zoom in on details with precision and accuracy.	Connection Points. Specify connection points on a Visio shape to indicate exactly where a line can connect to that shape.

For More Information

Visio will be available soon at a suggested retail price of \$299, which includes 90 days of free technical support and a 60 day money back guarantee. For further information, contact:

Shapeware Corporation
1601 Fifth Avenue
Suite 800
Seattle, WA 98101-1625
(800) 446-3335



Brought to you by

(Click)

Rich Young
Staff Writer
Windows OnLine



Written By:



Rich Young

2103 Hillside Ave

Walnut Creek, CA 94596

(510) 736-8343 - BBS - Conference 4



© 1992 ALL RIGHTS RESERVED



**New
Products**

News

"A conservative look at the latest Windows apps"

Windows Tips



Fonts Revisited

Custom Panel

Fonts Revisited

In my dealings with fonts I have learned a few things that might be useful for you as you contemplate downloading 5 MB of zipped True Type, TT, files. These relate to the use of such fonts and their desirability in various situations.

The advent of hundreds of TT fonts would appear to be a boon to a community of Windows 3.1 or Windows For Workgroups, WFW, users. With the release of WFW, I feel the need to include such users as a separate group. I will refer to Win 3.1 users and WFW users as Win 3.1 users unless there are separate implications for WFW users. PHEW! This convention will be observed for all future Windows Tips columns.

Microsoft sold Font Pack 1 at a very reasonable cost along with Windows 3.1. They have just released Font Packs 2 and 3.

There are a large number of fonts available on bulletin boards, including Windows OnLine. If you are using such fonts for home correspondence, you may want to skip to the next tip. For those using such fonts in business, I want to sound a caution.

All fonts are not created equal. Many of the fonts available on BBSs were originally Adobe Type One fonts. They have been converted to True Type using one of the commercially available font conversion programs such as Fontmonger. I have not reviewed Fontmonger and my remarks are based simply on my own observations of the fonts I have tried to use.

Many of the fonts produce print on the page which is not acceptable. Most of the problems I have encountered are with character spacing. At 10 or 12 point, the spacing appears

fine but, as you increase the size of the character, it becomes more problematical. In the larger sizes the characters can both crowd so close that they touch. They can also have overly wide gaps between them.

Commercial Font Foundries such as Bitstream spend hundreds of man hours checking each font in each size in each style, Roman, Bold, Italic and Bold Italic. That is why they cost the sum they do. In fact, the cost is not that high considering the amount of use you get out of one. All those characters on all those pages.

For business users, the choice of a font and a source for that font is an important decision. The bottom line is that you should put your best face forward when communicating outside the organization and that free fonts on BBSs may not be the way to go.

Custom Panel

If there is one place that appears immutable, it's the Control Panel. Those little icons just pop up there as if by magic. Is it magic? Yes and no.

The Control Panel loads various applets based on both the equipment installed in your system and the configuration of Windows being used. Below is the contents of my Control panel window.



I am sure that there are some of you who find the Control Panel a trifle crowded with all these icons, many of which are of no interest to you. Wouldn't it be lovely if you could somehow remove those whose usefulness was lost on you or whose purpose is known but unneeded. You can remove applets from the Control Panel but it means venturing into a hitherto dark and unknown continent, the CONTROL.INI file.

Bring up SYSEDIT.EXE, which, if you did not already know is hiding in the Windows/System directory. CONTROL.INI is not one of the standard files loaded by SYSEDIT and you must therefore load it separately. Use File/Open to see a list of all the INI files in the Windows directory. It used to be that the only INI files were the ones required by Windows

itself. Not any more. Every program under the sun creates an INI file. Find CONTROL.INI and load it.

At the very front of the file you must create a section heading of [Don't Load]. Under that heading type a line with the name of the applet followed by an equals sign and the word True. For example, I really don't know what a MIDI Mapper is so I decided to spirit it out of the Control Panel as follows:

```
[Don't Load]
MIDI Mapper=True
```

And just to prove that it works, here is an unretouched screen after saving the alteration to the CONTROL.INI file and reloading the Control Panel.



The logical extension of all this is to remove all the applets from the Control Panel. A user would have to be bordering on being committed to an institution for the mentally insane to do such a thing, but it is possible to do. So, next time you have a minute or two on your hands, customize your Control Panel.

If you really wanted to bug a fellow worker, arrange to have all of his or her Control Panel disappear over lunch.

Good-bye Cruel World!

Investigation conducted by



Hugh E. Hardie

P.S. I can be reached in either the I-Link Windows or Relaynet Windows conferences for questions or for tips.

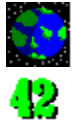


Hardie & Associates Inc.
Walnut Creek, CA
(510) 935-3994



If I had a magic wand, I would wave it and all shareware would be perfect. The bad news is, I don't have a magic wand.

As a staff writer for WinOnLine Review I have the opportunity and duty to audition a great deal of shareware. Sadly, often a very fine program is obscured by problems in its presentation, packaging, instructions, minor bugs, etc. While I don't claim to be the world's greatest expert on shareware, it is my hope that some authors will consider some of my suggestions and observations.



What Is The Meaning Of Life?

... or at least your program.



Tell me quick, before I lose interest. A **README.TXT** file is a must.



Include the official archive filename and size. I want to know if it's been messed with. Besides, if a user rezips it, they may not remember the original filename.



What does your program essentially do and what are its major features? If it's complex, refer me to another file that outlines functionality or explain how I can get a tour.




Tell me simply, without painful detail, how to install your program the best way, automatically (if applicable) and/or manually.





Are there any special hardware or software requirements.


 Is the shareware version limited in any way?


 Please use TXT extensions to your ASCII files or create a WRI file. A DOC extension, when clicked upon, brings up my association to MSWord. Then I curse my click and fume while I wait for it to load, take up a large chunk of memory and then convert that little file!

Installing Your Creation


 With great pride you expect that I will install, use and cherish your lovingly assembled piece of software. Perhaps not. Give me a break and an opportunity to reverse the installation and remove all the tentacles you have placed in and around my Windows sub directory.



Please give me a choice where to put the program. Not everyone wants your program in the C:\WINDOWS\MYPRIDE\ sub directory.



Let me know and give me a choice if you want to mess with my AUTOEXEC.BAT, CONFIG.SYS, or INI files or you're OUTA HERE!



Don't create a program group all for yourself, or at least give me a choice to set you up manually in the group of my choice.

A Word About Files & Sizes

 Downloading bytes is time, and time is money.


Don't include VBRUN100.DLL in your archive. Virtually everyone already has it, or can get it anywhere.


Limit the number of documentation files. I counted ten separate text files in a recent shareware release, all short and many with meaningless names and some with meaningless content. Opening each one is a major pain. Lose some or combine them. Personally, I like graphical WRI files.


Impress me with how well your program functions. Not with a 200K opening screen with the

logo of your fledgling bombastic company name.



Make It Bulletproof



I had to shelve a recent review as the otherwise beautifully designed and written program bombed. A waste of my time and the author's efforts.

Have a wide assortment of people test your program before it is issued. Use a circle of ruthlessly critical friends, or ask for beta volunteers on a local board with a promise of free registration for a limited number of participants. Find out their experience and equipment to test your creation on a wide variety of personality types and hardware/software combinations.

If a common error condition can occur because of a particular Windows configuration or conflict with another product, disclose it.

Don't rush your product to market before it is ready. Be patient or you'll be issuing an embarrassing version 1.1 that no one will download after getting burned by 1.0.

If you do find some bugs, give yourself some time to discover others before a reissue of your creation. And hold off on "new and improved" versions until you have enough good reasons to issue a new version.



Is It User Friendly?



Okay, I know that "User Friendly" is a trite expression with marketing overtones, but it is a valid criterion. Can I use your program without spending a half-hour with documentation or help files?

Greet me with action. Let's click and get on with the business at hand. Don't make me have to hire Indiana Jones as a guide to find all your features.

Use terminology that means what it says and that is universal as possible. If you use icon buttons, make their functions obvious or use action words.

Make it pretty. How about a little color? Remember what the "G" in GUI stands for.



Exotic interfaces ruin the comfortable familiarity of Windows. Use the usual file browse modes and sequences and drop down menus. It just makes it harder to get to know and use your program when you're excessively creative.



Get Paid For Your Good Work



You're proud of your efforts, but pride doesn't pay the bills. I know what shareware stands for: you share---ware's the money? Authors make their points in many, sometimes painful, ways.



Tell me exactly what I get for my registration. A disk with the latest version? A Complete Version? Upgrade privileges? Support? Describe it and spell it out! When you're vague or make general statements, you make me uneasy.



Don't ask for totally unreasonable registration fees. Survey the competition, both commercial and shareware. What is the true value of your program? Get an impartial opinion. You may get my \$15.00, but if you ask \$35.00 for the equivalent of a program I can buy commercially for \$39.95, the public and I may think you're greedy and use your program for free in retaliation.



If I contact you with a problem I encountered before I register your program, please respond. I'm not only interested in your program being reasonably bug-free before my purchase, but I'm also testing your responsiveness to problems. Users, include an S.A.S.E. if you mail an inquiry.



Please don't try to book me on a guilt trip or whine your way into my wallet. Be professional or even cute, but trying to be manipulative usually comes off badly.



Nag screens that recur in the middle of the program will often annoy to the point of tossing the program out unless it's really a winner. My personal opinion is that attractive, multiple button screens at the program exit are most effective.



Do you really have to be known as "Big Charlie's Super Software" or "MEGAMANIAC SOFTWARE DEVELOPMENT TEAM". If it's just you, relax and be yourself. I'm not impressed by IBM, either.



Final Touches



Design an icon that is both pretty and representative of your program's function. If you are no graphic artist, get a friend to help you.



Write your documentation in a friendly, light (perhaps even humorous) manner. Make it uncluttered and clear.



Include a descriptive yet concise **FILE_ID.DIZ** in your archive. Many a good program is lost in the shuffle when uploaded by a dweeb trying only to maintain file ratios who doesn't remember what your 300K represents.



If you receive a registration, respond professionally. If a disk is included, use an attractive printed label, not a tacky handwritten one. Thank your consumer and ask for their input into your future efforts.



HELP FILES! One of the nicer Windows features is the availability of on-line help. Take the time to write them well. Please, no one-liner topics.

I love the concept of shareware. What a great way to distribute software for authors, and a great way for we users to try a wide selection of programs any buy for a minimal cost. Shareware authors: I thank you all for the opportunity you bring to us.

Invitation

Shareware Authors

Your comments are welcome for your "Wish List" for Shareware Users. Please feel free to leave me a message at Windows OnLine at 1-510-736-8343 (modem), CIS 71334,2065 or my address in the popup below. If there are enough responses, perhaps we can do a follow-up article featuring your wishes.



written by

Bob Gollihur

Windows Online
the Weekly
Staff Writer

Maximum Micro

Success Company

*For Computers **People** Can Use*

Robert S. Gollihur

Seven Baywyn Drive, Ocean View, NJ 08230 609 624-0966

Networking Windows

by Darrell Potteet

Have it Your Way - Customizing Windows Installations

In previous articles I've discussed some of the different methods of configuring Windows on a network. In this installment you'll learn how to easily implement your installation strategy using the new Automated Setup feature of Windows 3.1. While this procedure can be useful to any Windows user, there is no doubt it is the network administrator who will benefit most from its use.

Automated Setup



Microsoft added several switches to SETUP.EXE in version 3.1 which allow significant customization of the Windows installation procedure -- the **/a** and **/n** switches which are specifically for network installation and **/h** which activates Automated Setup. The first two have been covered in earlier columns and are generally simple to implement. Automated or Batch Mode Setup is more complex since it requires the existence of a system setting file. Because of the number of cryptic entries which must be created or modified, this task may seem daunting at first. If you'll invest a few minutes to learn these procedures now however, you'll save hours later.

Basically this method allows a user to install or update Windows with little or no interaction beyond typing the setup command with the proper parameters. The syntax for the command is:

Setup /h:[drive:\path]filename

Setup /h:[drive:\path]filename /n if installing from a shared copy.

The filename indicates the systems setting file which contains the options to be configured during setup. A well commented sample of this ASCII file named SETUP.SHH can be found on Windows disk #1 or in the shared Windows directory if a network install with Setup /a has been performed. Put simply, this file is a script that is run by setup. Its format is comparable to the Windows initialization files and contains 8 sections. The administrator can modify these sections to determine how much interaction the user will have during setup and what options are actually installed.

[sysinfo]



showsysinfo=yes

A setting of "yes" here will display the System Configuration screen and give the user an opportunity to verify or change the settings. Set to "no" to bypass the screen if you're sure the user won't need to do this.

[configuration]



Various hardware devices are indicated here. Only set options you know exist on the target system. A blank setting will yield the default or detected device.

When updating an installation, some settings will be ignored and the installed device will be used. You can force the update by preceding the setting with the exclamation point such as -- **network=!lanman**. This applies only to the machine, display, mouse, and network sections.

Choices for the following settings can be found in the indicated section of the SETUP.INF file.

machine = ibm_compatible

Type of machine from [machine] section

display = vga

Type of display from [display] section

mouse = msmouse

Type of mouse installed from [pointing.device] section

network = lanman/01020000

Type of network from [network] section optionally followed by a version entry if a [network.version] section such as **[lanman.version]** in the SETUP.INF.

keyboard = t4s0enha

Type of keyboard from [keyboard.types] section

language = enu

Language profile from [language] section

kblayout = nodll

Keyboard layout from [keyboard.tables] section

[windir] 

c:\windows

Indicate where the Windows files should be installed. If this entry is blank or the specified path is not valid a dialog prompting the user for a destination will be displayed.

[userinfo] 

"Darrell Poteet"

"Peach Productions"

If you've done a network install (Setup /n) this entry is not used. Otherwise the first entry, user name, is required and the second line, company, is optional. Both entries must be 30 characters or less and surrounded by double quotes if any spaces occur in the name. If this entry is blank the user will be prompted for a user name.

[dontinstall]



accessories
readmes
games
screensavers
bitmaps

You can exclude the installation of any one of these optional components by placing its entry in this section. Any not listed here will be installed

[options]



This section allows you to specify certain operations to be done at the completion of setup. Any omitted item will not be performed.

setupapps

Will present a dialog prompting the user to indicate which existing applications they would like installed into Program Manager.

autosetupapps

All applications on the users hard disk will be installed into Program Manager. This entry will override **setupapps** if it exist.

tutorial

When Setup completes, the Windows Tutorial will start automatically.

[printers]



"HP LaserJet III",LPT1:

To automatically install a printer enter the printer description and port. Acceptable entries for printer description are found in the [io.device] section of the

CONTROL.INF. Port values are listed in the [ports] section of the WIN.INI. If the printer description contains spaces it must be enclosed in double quotes. No printer will be installed if this entry is blank.

[endinstall]



This section tells Windows what to do when Setup is complete.

configfiles = modify

Determines if the AUTOEXEC.BAT and CONFIG.SYS files will be modified. A **modify** parameter will cause necessary changes to be written to those files. A **save** entry will save proposed changes in CONFIG.WIN and AUTOEXEC.WIN and any changes must be made manually. If this entry does not exist no changes will be made.

endopt = exit

This last setting tells Setup how to end. Three settings are possible for this entry -- **exit** which exits to DOS, **restart** which restarts Windows, or **reboot** which reboots your system. If this entry is blank the user is prompted to make one of the choices manually.

The Payoff



You can probably see what a time saver this option can be when you're installing many users with varying levels of experience. Instead of hand holding through the process you can create a system setting file geared to any user's level of experience. If your users' needs are varied or you have several different hardware configuration you'll probably want to create multiple settings files and name them appropriately. If these are then stored in a network directory it's a simple matter to direct a user to type in one line rather than give instructions on the entire Windows setup procedure.

Whether your goal is total automation of the installation or to simply insulate the user from confusing options, Automated Setup will let you have it your way.

Coming Up A red arrow pointing upwards and to the right.

Think Automated Setup will make your life easier? Well if you do you'll want to stay tuned for the next installment when I'll cover how to modify the Windows Setup Information files to make your installation of Windows even more personal.

Exsqueeze Me ?

If you have a question you feel might affect other network users as well, address it to me and I'll try to answer it here in the **REVIEW**. You can reach me by leaving a message on Windows OnLine or via CompuServe.



Another Peach from:

Darrell Poteet

501 Mt. Olive Rd.

Stockbridge, GA 30281

404-914-8403

Staff Writer for **WinOnLine™** **REVIEW**

CompuServe

I can be reached on CompuServe via Account # 75300,3655.



Are There Standards In Multimedia ?

Yes, there are many different standards involving multimedia. It is not as simple as buying a sound card and CD-ROM player. I thought it would be quite easy, but then there are those ever changing standards. There will always be improvements, changes, and modifications to the multimedia standard. Knowing some of the standards and terminology in multimedia has helped me understand and decide which direction I wanted go.

MPC - Multimedia Personal Computers

The Multimedia PC standard backed by most vendors. MPC was created and supported by Microsoft and Tandy. This is really a hardware standard and software carrying this label has followed this standard's specifications. From what I see, the best starting hardware requirements for this standard is a 386 processor and higher, with 4 Mbytes of memory, a CD-ROM player, a sound and audio card, VGA graphical setup, and a minimum of 40 Mbytes hard disk space.

IMA - Interactive Multimedia Association

The Interactive Multimedia Association is made up of IBM, Sony, Apple, and Philips. The difference between IMA and MPC is the multitasking operating system it is running on. IMA stresses more on a multitasking environment that takes advantage of all the user's hardware. The hardware requirements are the same as MPC. IMA supports the NTSC and PAL standards for video displays. It is currently supporting 16 bit audio, as well as 8 bit audio, that MPC is only supporting at the moment.

Ultimedia - IBM's Multimedia For PS/2

Ultimedia is IBM's own version of multimedia running on their PS/2 computers. This was IBM's solution for moving into the multimedia for OS/2. Ultimedia is based on the IMA standard but is only dedicated to OS/2 operating system running on PS/2 computers. The OS/2 Multimedia Presentation Manager is the focus point for controlling all the devices.

Other Standards In Multimedia

CD-I And CD-ROM XA

CD-I is the standard CD-ROM based technology, that was here before and is still here now. Most CD-ROM players support this standard video display technology. This standard specifies a data transfer rate of at least 150 kilobytes per second (KPS) to play back low-resolution video on a CD-ROM. This is considered Level 1 MPC CD-ROM standard. CD-ROM XA is the standard for the extended architecture format. This standard supports audio on CD-I players. The extended format for CDs includes interleave data, audio, and video playback. This is considered Level 2 MPC CD-ROM standard.

DVI - Digital Video Interactive

Digital Video Interactive is Intel's proprietary technology for video support. This is an extended standard for CD-ROMs. DVI incorporates it's own compression format for files. Currently, playing DVI discs requires special hardware. IBM's ActionMedia II board for the PS/2 is supporting this standard. This standard is beginning to be bundle with several computers, including IBM's Ultimedia PS/2s.

JPEG - Joint Photographic Expert Group

The Joint Photographic Expert Group developed a compression for still color images. JPEG is a standard for color image compression. JPEG can achieve 25 to 1 compression ratio on an image without significant reduction in image quality. It is known that compression can go as high as 100 to 1 on images that are not sharp in contrast or using a large color palette.

MIME - Multipurpose Internet Mail Extensions

Multipurpose Internet Mail Extensions is a standard for support for multiple data types transmitted over networks.

MPEG - Motion Pictures Expert Group

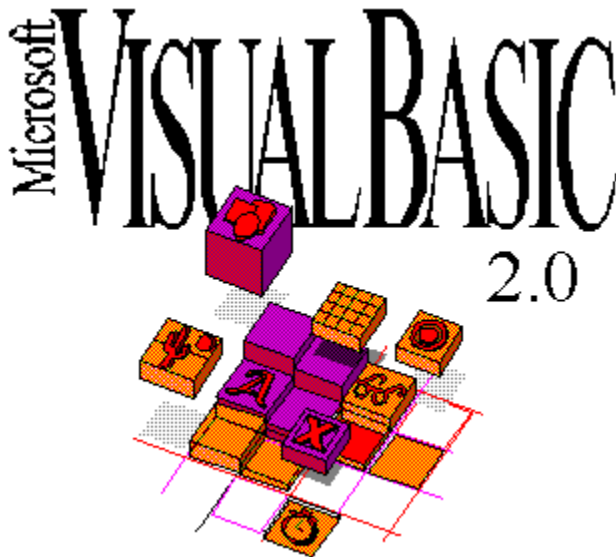
Motion Pictures Expert Group created a compression algorithm that can reduce a video

image to 1/50th of their original size and still retain the image quality.

PCD - Photo CD

Eastman Kodak Co. is heading this standard. PCD is another extended format to the CD-ROM standard. PCD enables a user to store images from 35 millimeter (MM) film onto a Kodak compact disc (CD). The PCD format is read by Photo CD players designed to display the images on a television or from compact disc-read only memory (CD-ROM) drives on a computer. In my case, it would be displayed from a CD-ROM player for my computer. CD-ROM players that support this standard, label their product as being single session or multi-session photo CD compatible.





The wait is finally over with Microsoft's announcement of **Visual Basic 2.0 for Windows**. The program has been in beta for months, but the final version shipped to the manufacturers two weeks ago and registered users have begun receiving upgrade notices. Availability is expected in the middle of November.

VB 2.0 is a logical upgrade without any major shifts in how the program works; only the packaging has changed. Now VB comes in the Standard Edition and the Professional Edition. The Standard Edition contains the built-in controls with a few custom controls added in; the Professional Edition contains a host of extra controls and tools required by the professional programmer, all tightly integrated into one package. The Pro Edition is like having the Professional Toolkit from version 1.0 updated and more fully integrated into the development environment.

Here's a partial list of what's new:



The Properties Window



The ToolBar



Color-Coded Editor Window



Improved MDI Child Control



Debugging Tools



New built-in Shape, Line and Image controls



Enhanced drawing and design tools



Easier links to context-sensitive help

OLE Client and Common Dialog custom controls

Capability to save forms and modules to text files (helpful for code sharing and version control)

Support for huge arrays and 256-color bitmaps

Enhanced functionality in forms and controls, including the new .hWnd property

New "Variant" Data Type

Optional explicit variable declaration

Faster Code, Smaller EXE files

The Professional Edition includes all this, plus...

A host of new custom controls needed by the professional Visual Basic programmer...

Two Messaging API (MAPI) controls

The masked edit control

The communications control

Two Pen Windows controls

35 other controls supporting pen computing, serial communications, multimedia and more

Open Database Connectivity (ODBC) support

Updated Control Development Kit

Help Compiler 3.1

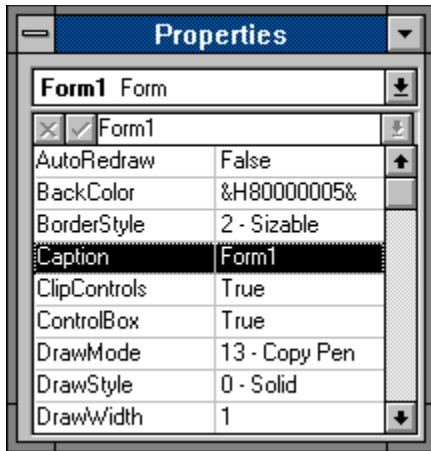
Windows 3.1 API reference (online only)

New sample code, business clipart, and updated toolbar button bitmaps.

The best part of all this is the price. For registered users the Standard Edition upgrade is only \$79. dollars; the Professional Edition is \$199.. If you're a registered user of the Professional Toolkit, upgrading to the Professional Edition of 2.0 is only \$99.! This is such a steal Microsoft will probably have trouble keeping up with the orders at first!

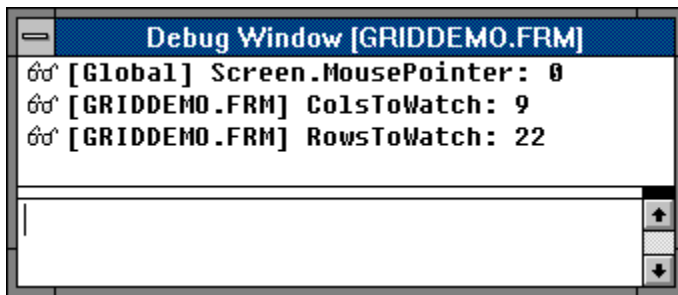
Here's a rundown of the major new features...

The Properties Window

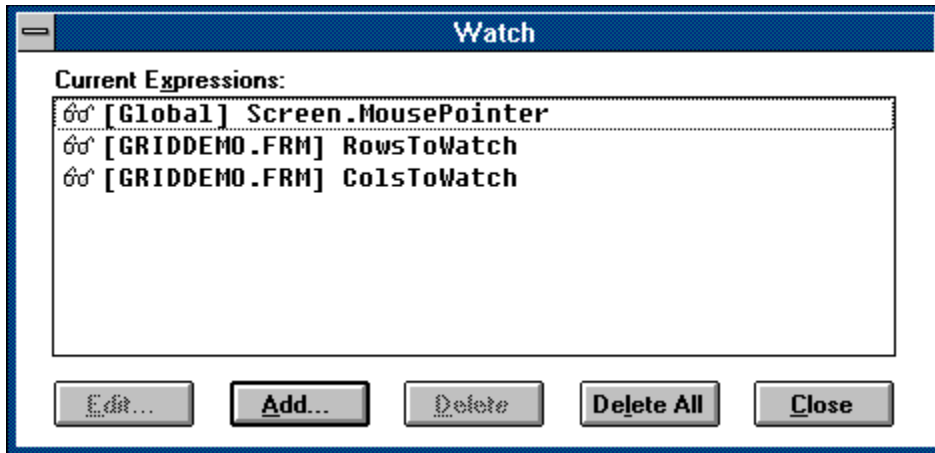


The **Properties Window** is probably the biggest time saver of all the new features. This allows you to modify the properties of forms and controls in a much easier way. The window is resizable so you can see as much or as little as you wish, and a hotkey combination (CTRL+SHIFT + the first letter of the property) makes finding and changing properties a snap. When you're on a Caption or Text property you can just start typing and the value will be updated -- a handy feature for touch typists who hate grinding gears by switching from keyboard to mouse too often. Two dropdown listboxes at the top of the Properties Window make it easy to choose properties from an available list or to select other controls on the current form for changing. This one is a real winner!

Debugging Tools/The Debug Window

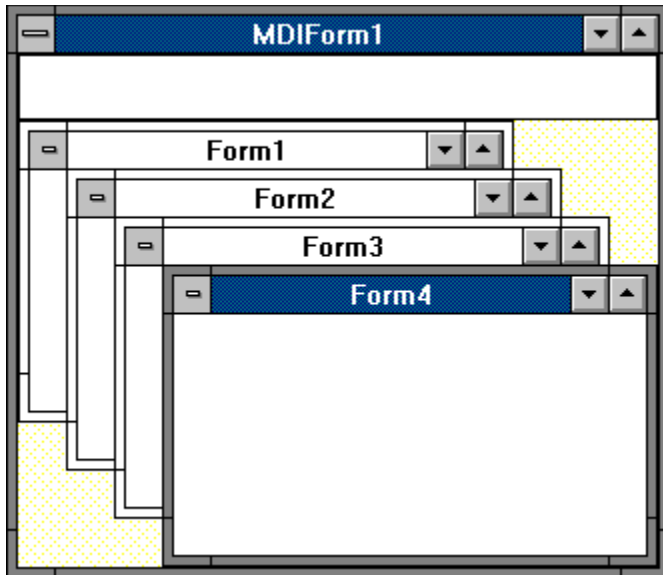


The Immediate Window is now the **Debug Window**. This window works with the new Debug menu to let you watch variables as they change. It's broken into two panes the Immediate Pane, containing all the functionality of the old Immediate Window, and the Watch Pane, located directly beneath the Debug window title bar. This pane is visible only if you have selected a watch expression to be monitored during code execution. The displayed information includes the context of the watch expression, the expression itself and its value at the time of the transition to break mode. If the context of the expression is not in scope when going to break mode, the current value is not displayed. You can add or edit watches from the Debug menu using the Edit Watch window...



MDI Child Windows

This is much easier since MDI (Multiple Document Interface) is now built right into Visual Basic. Each project can have only one MDI Parent Form but that form can have multiple instances of an MDI child form, each with it's own instances of the controls on that form! The demo pictured here was made by adding one MDI parent form to a new project, setting Form1's MDIChild property to True and pasting in sample code from the Arrange method topic in Visual Basic Help -- took about three minutes....



The ToolBar

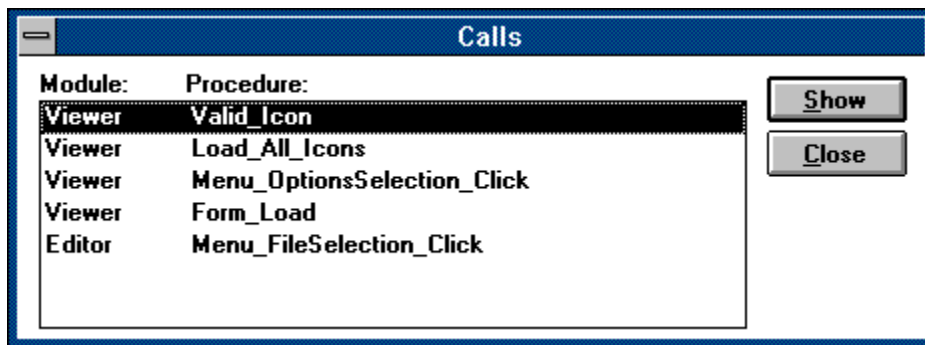


ToolBars are a cosmetic frill in my opinion, but I learned to like this one fairly quickly. With a single click of a button you can add a form or module or load or save a project. There are

buttons to call up the Menu Design Window and the new Properties Window, and controls to start, break and stop your program.

The five buttons on the right aid in debugging; you can set or clear breakpoints, watch variables, and step through code either line-by-line or a procedure at a time.

A powerful new feature is the capability to view all unfinished procedures in your program. In a multitasking event-driven environment it's possible for your program to get tangled up in it's own feet, especially if a lot of DoEvents() calls are sprinkled liberally about. A quick look at this window during break mode tells you exactly where you are and how many procedures the program must finish before it returns to idle. This screen shot was taken during a break in running the new ICONWRKS demo...



One more nice feature about the ToolBar -- it's optional!

New Ways to Handle Variables

The "Variant" Data Type: This isn't flashy, but it's important. The Variant data type is the default for Visual Basic -- the data type that all variables become if they are not explicitly declared to be of some other type (using Dim, Global, or Static). The Variant data type has no type-declaration character. This special data type can contain numeric, string, or date data as well as the special values Empty and Null. If the nature of a variant variable's contents changes, the variable adjusts accordingly! Do decimal division and store it in a variant of type integer, that variable retypes itself to be a variant of type double automatically! This makes it a lot easier to declare and use variables on the fly.

The "Option Explicit" Setting: This is on the other end of the spectrum, for programmers who insist that everything be explicitly declared before it's used. If Option Explicit is enabled only variables which have been explicitly declared may be used. This solves the problem many VB programmers have had when a program misbehaved due to a misspelled variable name. Normally, VB assumes it's a new variable, but if Option Explicit is on only previously defined variables pass muster. Typos are caught.

Environment Options

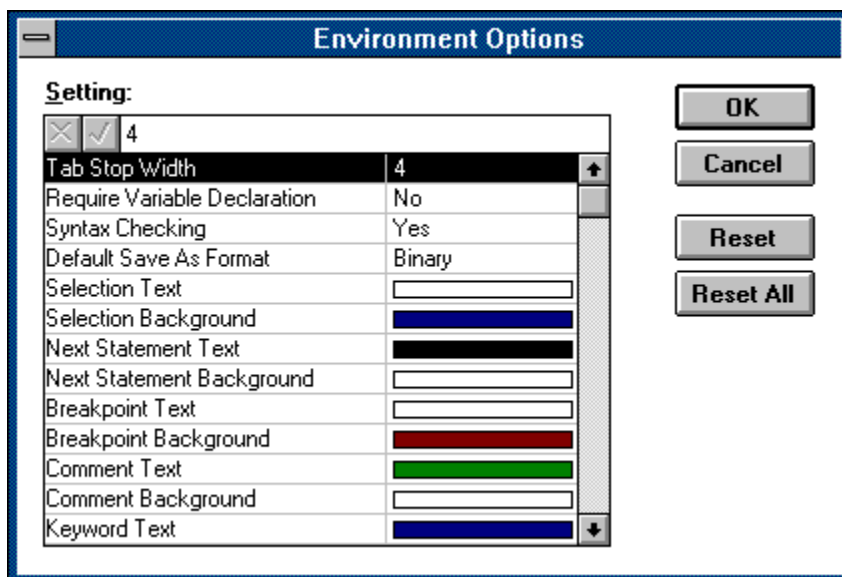
```

Object: [general] Proc: CircleDemo

Sub CircleDemo ()
  ' Declare local variables
  Dim Radius
  ' Create random RGB colors
  R = 255 * Rnd
  G = 255 * Rnd
  B = 255 * Rnd
  ' Position center of circles in form center
  XPos = ScaleWidth / 2
  YPos = ScaleHeight / 2
  ' Generate radius between 0 and almost half form height
  Radius = ((YPos * .9) + 1) * Rnd
  ' Draw circle on form
  Circle (XPos, YPos), Radius, RGB(R, G, B)
End Sub

```

What more needs to be said here? Plenty! Comments are green, keywords are blue, identifiers are black and the background is white -- unless you change it! The Options menu offers you the chance to change your environment to fit your taste and style. Most of the Environment options revolve around the color of different forms of text in the Code Window. Here you're only limited by your imagination...



Additional Enhancements

Speed and Size: Even if you do nothing but recompile your current programs they'll be

smaller and faster. Of course your users will require VBRUN200.DLL, which is a larger file (356,704 bytes compared to VBRUN100.DLL's 271,264), but this one-time download wasn't a problem for VB programmers first time around and the improvements are worth it.

Larger Projects: Visual Basic projects can now have many more procedures, forms and variables. There is a limit of 512 distinct objects in an application. Visual Basic uses 80 of these for global objects, data types, and standard controls. Thus, your application can have up to 432 forms types or control classes. Each custom control class and form type that you create for your application is included in this limit.

Huge arrays are directly supported -- you're only limited by the amount of memory Windows has available.

ODBC Support: VB now supports the Open DataBase Connectivity standard. You can write your code the same way for many different database engines; load a new engine into Windows and your VB application talks to that database just like it did the others. VB 2.0 Professional comes with the Microsoft SQL Server driver for ODBC and more are on the way.

MAPI Support: The Pro ToolKit supports Microsoft's Messaging Application Programming Interface, included in Windows for WorkGroups and scheduled for other Microsoft connectivity products.

Improved Help: Visual Basic's help system takes better advantage of the improved Help engine in Windows 3.1. Glossaries pop up in separate windows, hot spots are used in some graphics and the Professional Toolkit is far better integrated; no more searching for that separate CTRLREF.HLP file; Visual Basic pops it up as readily as VB.HLP when you're on a Pro Edition custom control. The Professional Edition also ships with the Windows 3.1 Help Compiler and all the tools needed to take full advantage of the improved engine, including SHED.EXE, the BitMap HotSpot Editor. One can only hope in future that Microsoft makes it's own Help Authoring system available to the masses soon to complete the picture.

The Bottom Line

There's much more -- too much to cover in one article. Yet for all the upgrades, improvements and changes, Visual Basic still fits like a glove. The program handles better, runs faster and looks better. VB still drives like your favorite car, but now the tires are fully inflated, there's hgh-octane gas in the tank and it has a new paint job.

The upgrade price is a steal, especially considering the power and functionality it all includes. Microsoft's vision of linking all of their major applications together through a BASIC-like set of subcommands took a big step with Visual Basic 1.0; Version 2.0 makes it a giant leap.



About Visual Basic 2.0

Barry Seymour



**MARQUETTE
COMPUTER
CONSULTANTS**

Visual Solutions for Business Computing

22 Sirard Lane, San Rafael CA 94901
415/459-0835
CompuServe 70413,3405

For the [WinOnLine Review](#)



Marquette Computer Consultants provides...



Windows Programming in Microsoft Visual Basic



Database programming for Windows/DOS applications
in standalone, networked and/or SQL Server environments



Windows installation, optimization, training and support



Hardware support, assistance and troubleshooting



Visual Basic 2.0 Upgrade Offer: (expires December 31, 1991)

Standard Edition: **\$79.00**

Professional Edition: **\$199.00**

(\$99.00 for registered users of the VB Pro ToolKit)

For more information, contact...

Microsoft Sales and Service: (800) 426-9400

Microsoft Developer Services: (800) 227-4679

SynApps Synergy

by Scott Drassinower

Synergy is a collection of nine various utilities. They include a sound file player, a toolbar creator, a file finder, a special effects creator, an automatic program launcher, an icon editor, a utility that keeps track of files that you have been using, a powerful script language (similar to the one included in the Norton Desktop for Windows), and a screen capture utility.

Audition, the sound file player will play .WAV files, and comes with a driver that will let you play sound files if you do not have a sound card. You also can play files via the command line. Audition comes with about 15 WAV files that were produced exclusively for SynApps.



Eclipse, the toolbar manager is probably the most versatile utility provided in Synergy. You can create a toolbar that will load an application, or have it send keystrokes and commands to Windows programs. You can also launch SynApps Script Language (SSL) files or commands.



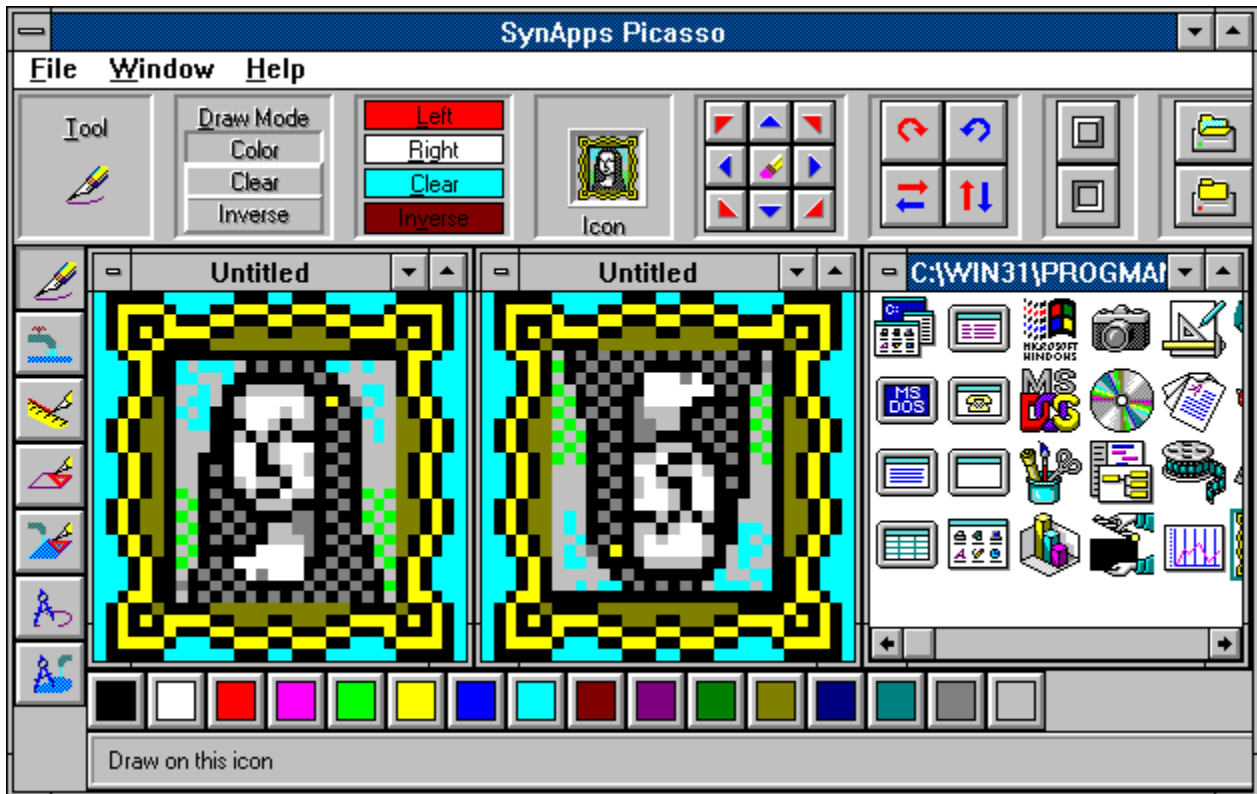
Eclipse comes with toolbars for Microsoft Word for Windows, Microsoft Excel, Lotus 1-2-3 for Windows, WordPerfect 5.1 for Windows, and toolbars for some of the Windows accessories like Paintbrush, Terminal, and Write. Toolbars can be either attached to the Program Manager, an application, or be free-floating. You can drag-and-drop onto a blank button to create a new one, but you cannot drag-and-drop a data file onto a program button (i.e. BUDGET92.XLS onto Excel).

File Fetch, the next component is a powerful file finder. You can specify which drives you wish to search, and also specify parameters such as file attributes, file size, file dates, and you can exclude certain files from the search. You also have the option of executing or deleting found files.

FX lets you add special effects to Windows. You can create zooming (exploding) windows, shadowed windows, and attach sound effects to over 60 Windows events, such as

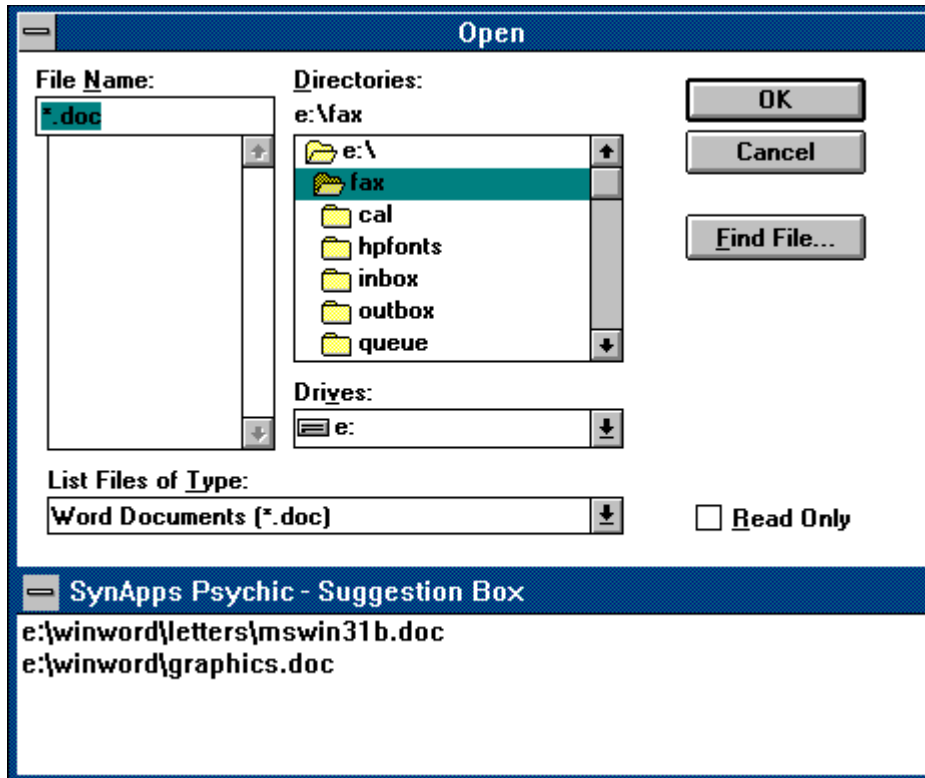
clicking on buttons, and selecting menu items. You can set the size of the shadows, and also control how many window frames are created when using zooming windows.

Launch Pad is a utility that will let you schedule events to run automatically at specified times. You can have a message displayed, an alarm sounded, a program launched, or all three. Events can be scheduled for every 15 minutes, 30 minutes, 45 minutes, hour, day, week, 2 weeks, at the beginning of each month, or the end of each month.



Picasso is Synergy's powerful icon editor. You can edit icons from an individual .ICO file, or from an .EXE, or .DLL. You can even replace an icon in an .EXE or .DLL with one that you have created. Picasso also lets you move the entire image around, rotate it, flip it, and even add 3D effects. There is an inverse drawing mode, and you can also assign a different color to each mouse button. Since Picasso uses the MDI (multiple document interface), you can have open several icon files or libraries. You can also drag-and-drop icons between libraries.

The most interesting utility provided with Synergy is Psychic. Psychic is a utility



that remembers file names that you have used recently, and then to give those names to you in the future, so that you don't have to type them in or search your directories to find them. Hopefully, Psychic will make good guesses, leaving you free to think about more important things than where your files are. It attaches itself to almost any file open, file save, or file run dialog box.

The most powerful utility included in Synergy is the SynApps Script Language (SSL). SSL has over 200 functions, including variables, text arrays, and if-then-else branching. You can use SSL to launch applications, control their size and position, create dialog boxes with text, buttons and graphics. SSL can also call menu commands in applications, and can also send keystrokes to the application. Synergy includes a special editor to create scripts, or modify existing scripts. There is also a debugging mode. There is no way to easily create or edit dialog boxes. You must give SSL text and numeric commands. Many applications, such as Microsoft Word for Windows, and Ami Pro come with a dialog box editor that will let you draw these elements, and will create the text file that contains information regarding size, shape, etc.,.

SynAppShot, the screen capture utility will let you capture any part of the screen, let you rotate it, or create a mirror image of it. You can save captured screens as .BMP files, and even cut out a portion of the screen and load it into Picasso to turn it into an icon.

Overall, Synergy is an impressive array of utilities. Version 2.0 should be out shortly, and it will add improvements to the SSL, and add numerous clipboard utilities. At \$129.95 list, Synergy is well worth every penny.



SynApps Synergy
Program Information



Scott Drassinower
WinOnLine Review

SynApps Synergy

US\$129.95 List Price

SynApps Software, Inc.

2009 178th Avenue

Redmond, WA 98052

Tel:(206)562-3015

Fax:(206)784-7125

Cloud 9 Consulting

15 Lake Street
White Plains, NY 10603
Tel: (914)682-0626
Fax: (914)682-0506



SofNet, Inc.

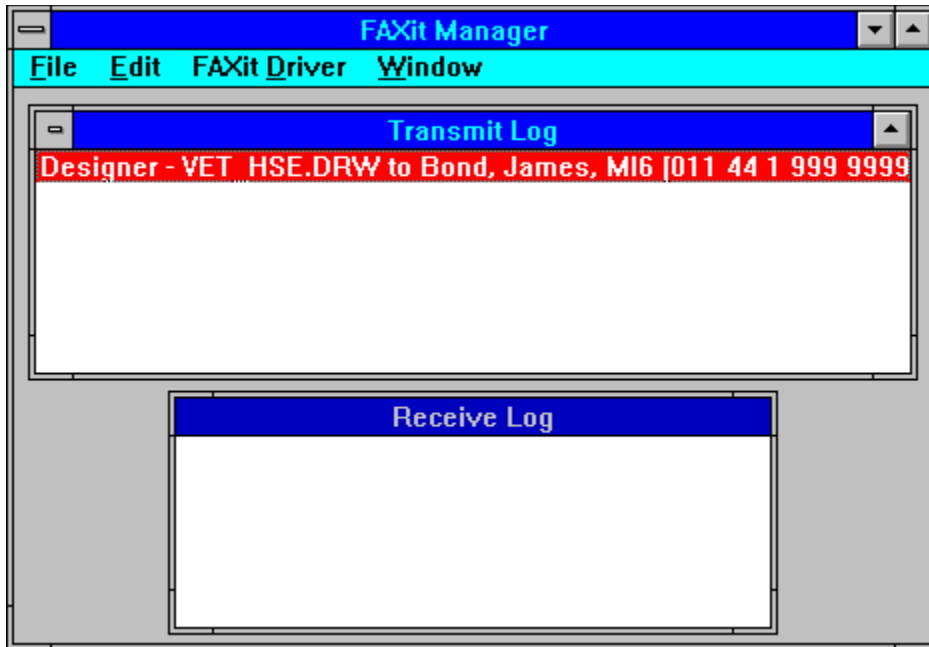
The Easiest Fax Solution For Windows & DOS



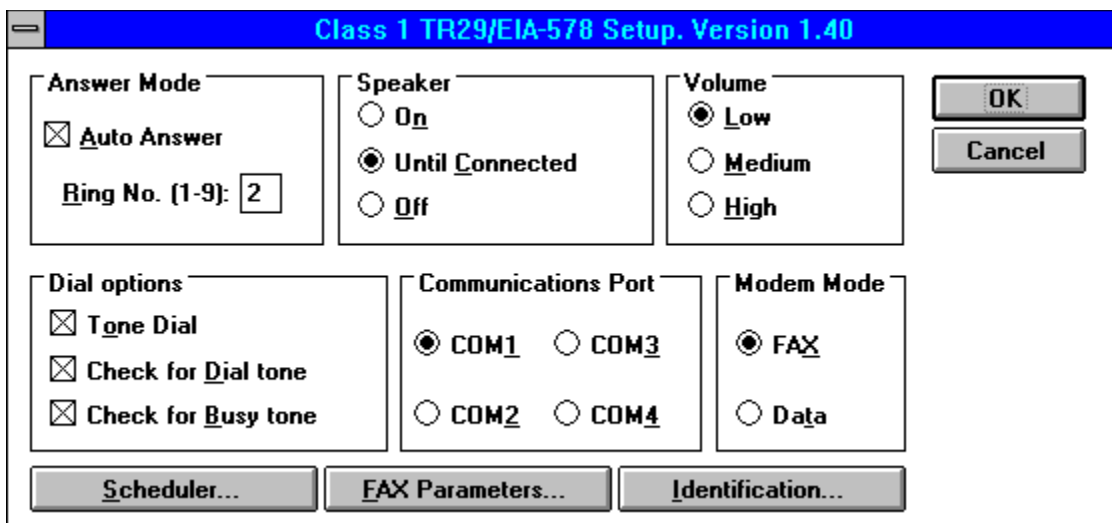
by Randy Wong



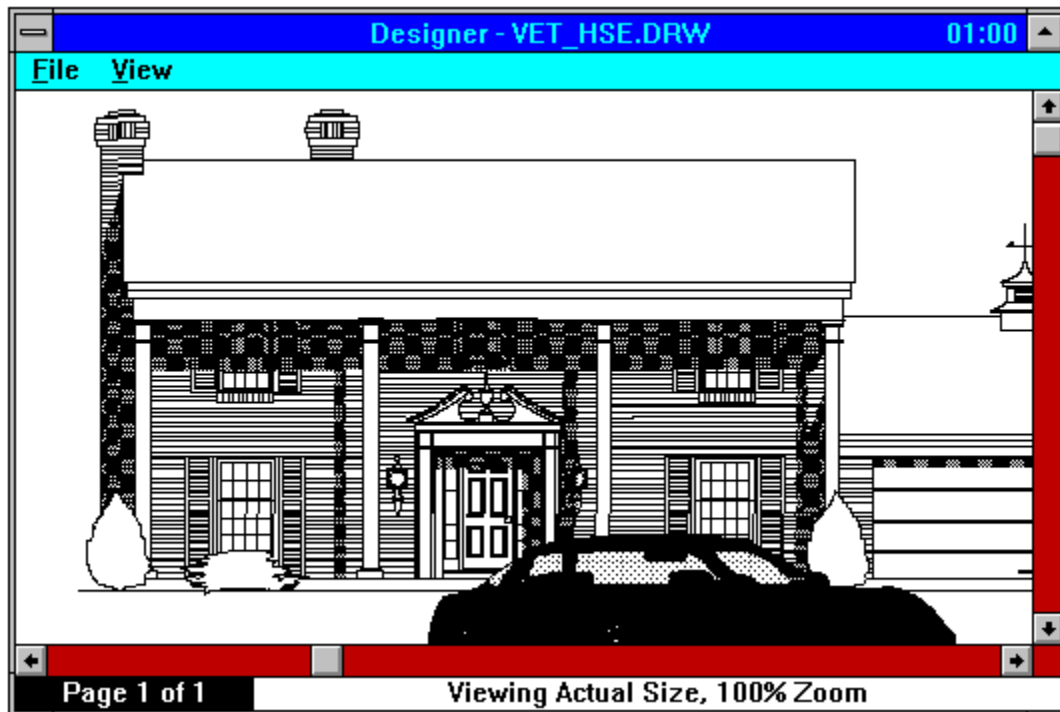
Faxing from your desktop is a very nice idea and has its advantages. It gives you a chance to be a chair potato. Instead of getting up and going to a fax machine, you could remain seated. The documents that you send from your desktop will be of superior quality, opposed to the documents being scanned by the fax machine. For all its good points, there is a dark side. Windows fax software has not been as good as it's about to get. Windows Fax software had problems with networks, different types of fonts, graphic images, and technical support. That has changed. In order to get a feel for what the fax world has to offer, I started with the granddaddy of the Windows fax software, FAXit for Windows. FAXit, developed by Alien Computing, was introduced to Windows in 1989 and has continued to grow with Windows. SofNet is the publisher and distributor. SofNet provides the technical support for this product. Alien Computing is still continuing to develop new versions of FAXit.



Faxing is controlled by the Faxit Manager. For CAS fax boards and modems, the faxing is controlled by the CAS Manager. The manager displays the transmit logs and receive logs, in two separate windows. Receiving fax files will appear immediately in the receiving log window. You can view the fax file as it is being transmitted. Within the transmit log window, Faxit Manager displays the application that generated the fax, the file name, to the addressee, the fax number, date sent, and time recorded. The receive log window displays a similar line of information. The date and time stamp and any information that was included in the fax header are displayed. Double clicking on a fax file within the transmit or receive log window, will bring up more information on that fax file. One interesting feature of Faxit is that it keeps the fax file in one continuous file. Which means, the images are not broken into separate pages. When you view the file, you scroll through the file as one continuous sheet of paper. This speeds the process of looking at the file on screen. When it is time to print the document, Faxit automatically separates the fax segments into separate pages.



Setup of Faxit for Windows is quite easy. During the setup you select your fax modem definition. There is over 50 fax modem listed. If the modem definition is not listed, you can still select a generic Class 1, Class 2, or CAS compatible fax modem. In my case, the fax modem was not listed, but I knew that I had a Class 1 type fax modem. Once installed, faxing a document is just like sending it to the printer. Instead of printing to a printer, you will be printing the document through the Faxit Manager. There is support for both **Fine** and **Standard** resolutions on transmission modes. With Faxit external SCH TSR installed, faxing through Windows was quick and did not interfere with what I was working on. This was because the SCH program was handling the timing outside of Windows.





The most interesting feature I found with Faxit, was the viewing facility. When you select a received fax, you do not have to go the next page when you are viewing. The file is displayed in a long continuous sheet. Control for viewing is done by the scroll bars or keys. You can select a section of the file and save just that block. You can save a select area, the current page, or the entire fax session to a different file format. File formats supported are Class 1 Fax format, PCX, DCX, and TIFF. When saving multiple pages, Faxit will save them to several numbered files, using the first six digits specified. There is an optional fax cover page generator.

The Bottom Line

Faxing documents and reports are done quickly and smoothly in background or foreground under Windows. I can see why it is one of the better fax software for Windows. Since I do more than just use my fax modem as a fax machine, Faxit has taken away some of

my freedom. There are several things that are bothersome to me. The SCH TSR program must be manually turned off, in order to get my modem back. The replacement of my Windows communication driver (TurboCom) with its own fax communication driver cut my data transfer rate down. In talking with SofNet, all is not lost. They have acknowledge the advancements in the way users are working with fax modems from their desktop. The next release of Faxit will be better than before. Optical Character Reader (OCR) facilities will be added. The DOS TSR, SCH, will go away. It will start using some of the features of Windows 3.1. With this next version, coming in the next month or two, Faxit for Windows will be up to speed with all of the other fax software for Windows that are being upgraded or released at this time.

 **Requirements** 

- Any Microsoft Windows based computer.



Microsoft Windows 3.0 (or higher) running in Standard or Enhanced mode.



800 KB of free memory available from the Program Manager.



3.5" or 5.25" floppy disk drive for installation.

A



400 KB of disk space is required to install, with 1 Mbyte of free disk space for inbound and outbound fax files.



Fax hardware, such as a Fax Modem or Fax Card installed.



Any Windows pointing device is recommended.



500 KB disk cache is recommended.

A



For more information, please contact:





SofNet Inc.
21700 Northwestern Highway
Suite 1070
Southfield, Michigan 48075
313-559-5955

List Price is \$119.00



Randy Wong



Computer News & Product Reviews

©1992, Windows Online™ IDS

Product Review



Randy Wong
Windows Online™
510-736-8343

The image is a rectangular graphic with a yellow background and a thin black border. At the top, the words "Product Review" are written in a blue, stylized, cursive font, arching over the center. Below this, there is a grey illustration of a vintage typewriter with a sheet of paper emerging from the carriage. Underneath the typewriter, the name "Randy Wong" is written in a blue, cursive font. Below the name, the text "Windows Online™" is written in a black, sans-serif font, and at the bottom, the phone number "510-736-8343" is written in a black, sans-serif font.

Save FAX

Save

All Selected

Pages: to:

File Name

Multiple Files

Format

Class1 FAX format

PCX: ZSoft Image

DCX: ZSoft Document

TIFF: no compression

TIFF: Group III compression

OK

Cancel

FAXit by Alien

Orientation: Portrait Landscape

Resolution: Fine (200dpi) Normal (200x100dpi)

Paper Format: US Letter US Legal US Mini
 DIN A4 DIN B5

Generate Cover Sheets Beep on FAX receipt

Ok
Cancel
About...

Hardware... User... Directories...

Class 1 TR29/EIA-578 Scheduler Configuration.

Redial Setup

Redials: (Times)

Redial delay: (Seconds)

Retries: (Times)

Retry delay: (Minutes)

Scheduler

Multiplex: (Number)

OK

Cancel

Default

Class 1 TR29/EIA-578 Configuration.

FAX Parameters

Max wait for dial tone: 2 (Seconds)

Max wait for carrier: 60 (Seconds)

Comma delay time: 2 (Seconds)

Carrier detect time: 9 (Tenths)

Carrier loss time: 14 (Tenths)

Tone dial speed: 95 (Milliseconds)

OK

Cancel

Default

Class 1 TR29/EIA-578 Page Header		
FAX Identification:	<input type="text" value="Randy Wong"/>	<input type="button" value="OK"/>
FAX Number:	<input type="text" value="510-736-4376"/>	<input type="button" value="Cancel"/>

Log Information	
File:	Designer - VET_HSE.DRW
To:	Bond, James
	MI6
FAX#:	011 44 1 999 9999
On:	Oct/23/90
At:	5:48 PM
	<input type="button" value="Close"/>
	<input type="button" value="View"/>
	<input type="button" value="Clear"/>
	<input type="button" value="Reschedule"/>
	<input type="button" value="Status"/>





FAXit Manager

Version 2.15E

Published by SofNet, Inc.
Copyright © Alien Computing, 1988-92

OK

Conceived, Designed and Programmed by
Philip Hopkins & Tom Gray

Watch out for the next release

Faxit *For Windows*

will be changed to

FaxWorks *For Windows*

SoftNet



Please Register Your Shareware

Support the continued development of your favorite shareware. If you find a program of use, register it, tell the author what you'd like to see in future releases. If you think it too costly, or have a problem with it, write the author and present your case or ideas. Let's keep this fantastic method of software distribution alive!!!



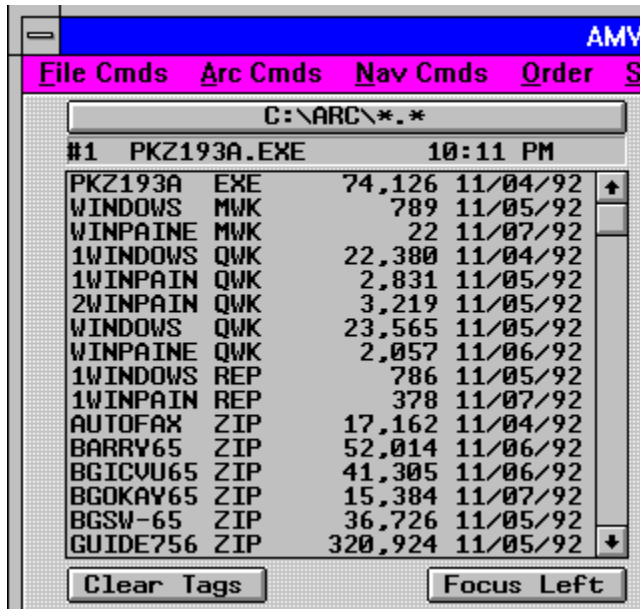


ArcMaster 1.1 for Windows

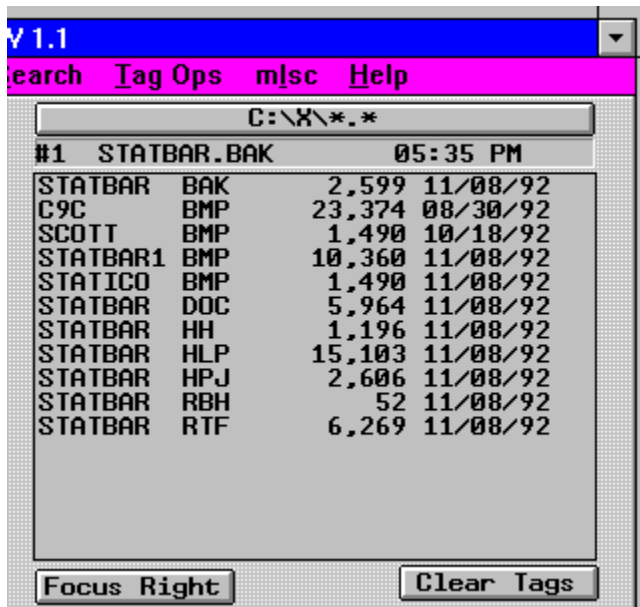
by Rich Young

I have been a long time user of ArcMaster for DOS, and have been waiting patiently for the Windows version of this first rate utility. New-Ware did not let me down. While AMW is not exactly the same as its DOS counterpart, there is enough of it combined with the skillful exploitation of the Windows environment to make this user a happy camper. AMW is a Windows 3.1 program designed to make the management of file compression systems and the files they produce much easier. In addition, AMW offers normal file management capabilities such as file copy, move, and deletion, directory tree management, and more.

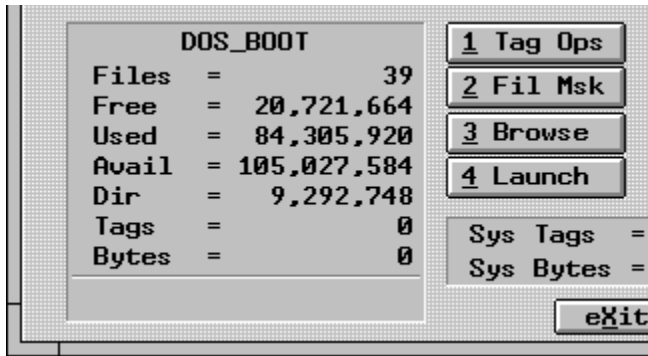
Installation of the program is so easy, it doesn't warrant explanation. The first time you start the program, you'll want to configure it to suit your needs. That process is also very simple. After you have your preferences configured, it's time to start in with an AMW session. You are presented with this main screen:



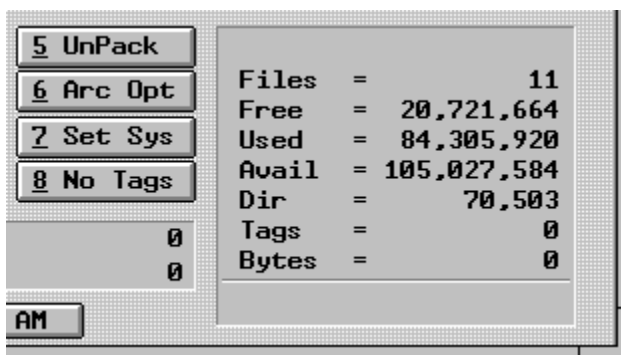
This is the upper left hand quarter of the screen.



And this is the upper right hand quarter of the screen.



This is the lower left hand quarter of the screen.



And of course the lower right hand quarter of the screen.

The main AMW display consists of two file list windows, a status box for each list window, and operating controls. All AMW functions are available through the main pull-down menu and many of them are accessible through button and keypress controls.

The active directory path name appears on a control above each file list window. You can click on this control to activate the Directory Tree display.

A cluster of 8 control buttons is located in the lower center area of the main display:

- 1 Tag Ops
- 2 Fil Msk
- 3 Browse
- 4 Launch
- 5 Unpack
- 6 Arc Opt
- 7 Set Sys
- 8 No Tags

There are two control buttons located just below each file list window:

Clear Tags - Which simply clears all tagged files in that window.

Focus Left/Right - Just makes either the left or right window the "active" window.

In addition, there is an EXIT button located at the very bottom center of the display.

Most AMW functions are available through the keyboard as well as via the menu, buttons, and the mouse. The main menu shows the associated keyboard command for each AMW function.

Tagged File Dialog

AMW makes it quick and easy to perform functions on groups of files. I usually like to delete my ZIP files after I have un-packed them, so all I have to do is tag them and hit the TAG OPS button to get the Tagged File Dialog box.

This dialog displays the list of all tagged files. The list is flanked by six action buttons. The current default archive system status is displayed in the lower left hand corner. You may change the destination directory via the edit control in the lower center of the dialog.

The six action buttons function as follows:



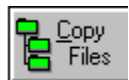
Starts compression of the tagged files using the default archive system.



Starts decompressing tagged compressed files.



Starts conversion of tagged compressed files to the default archive system.



Starts copying tagged files to destination directory.



Starts moving tagged files to destination directory.

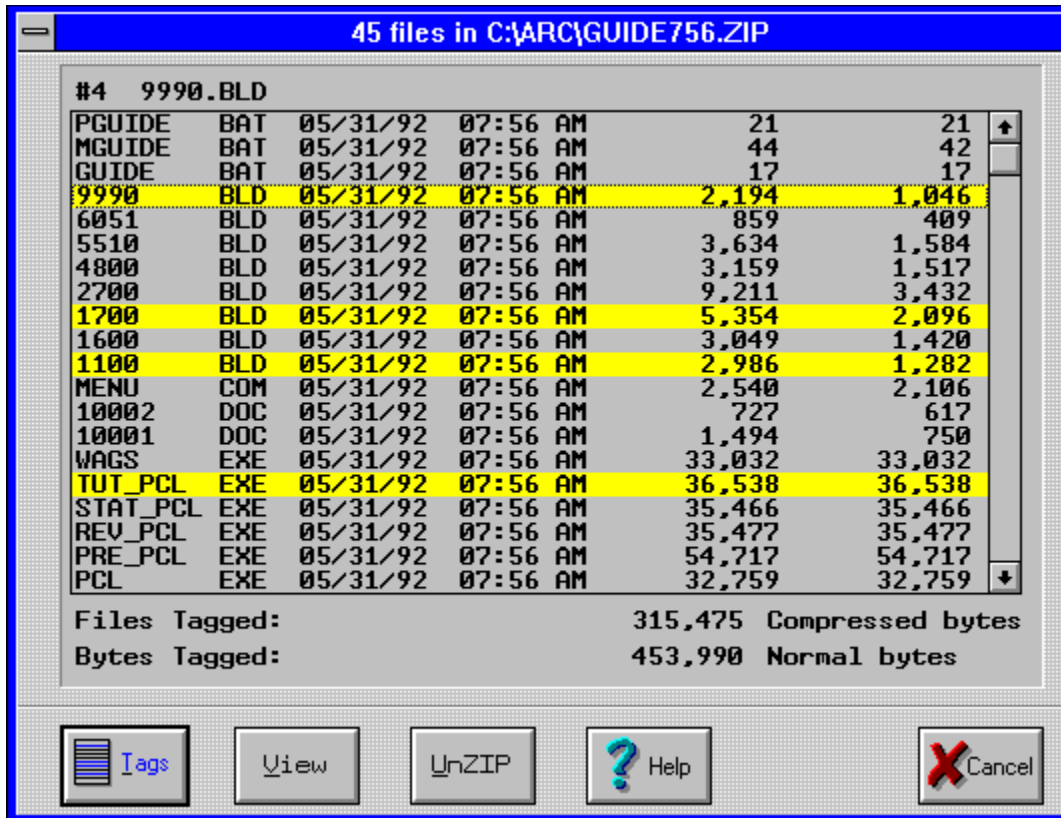


Starts deletion of tagged files.

You may remove a file name from the list by positioning the selector bar over a file name and pressing the Del key.

Unzip & Zip With Ease

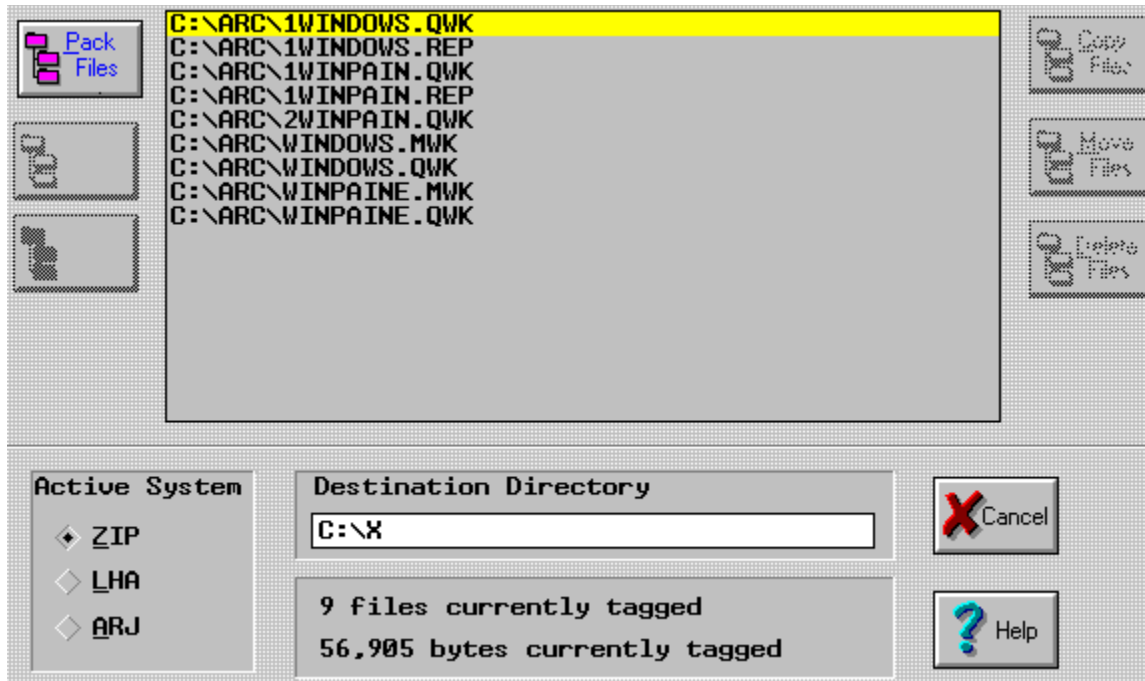
With so many options for executing functions, you have the advantage of picking one that suits you. When I go to unzip a file with AMW, my preferred method is to simply double-click on the file in the left window. That immediately brings up this window:



Here I can view and then select only those files that I need out of the archive, leaving the "filler" behind. Then I can choose from any of my preferred options from the UnPack Zip dialog window.

The fastest method is to click on the Unpack Button , which will quickly extract all the files in the selected archive (with default parameters) to the directory in the right hand window.

Creating an archive is just as easy, and works along the same lines. You need only select the files you want to compress and hit the F9 key, or select the Tag Ops button to bring up that window where you select the Pack Files button. If you select the F9 key, you get the Compress Window:



After making your selections, or when you hit the Pack Files button from the Tag Ops window, you then have to give your archive a Name. From here you can select the Cmds Ops button to change any of the PKZIP default options for compression. After the compression is complete, your new archive appears in the right hand window.

In Conclusion

ArcMaster for Windows is a superior archive utility. It is the best in the Windows environment to date. New-Ware does have to smooth out the rough edges, and I would like to see more of the keystrokes from the DOS version incorporated, but the program is first-rate in my book. I would also like the compressing and uncompressing done internally, instead of shelling out to DOS. I would at this point highly recommend ArcMaster for Windows to all users that deal with many archived files.

For more information, contact:

New-Ware Shareware Products
8050 Camino Kiosco
San Diego, CA 92122
(619) 455-6225

You can try ArcMaster for Windows v1.1 for yourself. It is available to members on **Windows OnLine** as AMW11.ZIP.





Brought to you by

[\(Click\)](#)

[Rich Young](#)
[Staff Writer](#)
[Windows OnLine](#)

C:\ARC\GUIDE756.ZIP

Pack Files

Yank Files

Baptize Files

Copy Files

Move Files

Delete Files

Active System

- ◆ ZIP
- ◆ LHA
- ◆ ARJ

Destination Directory

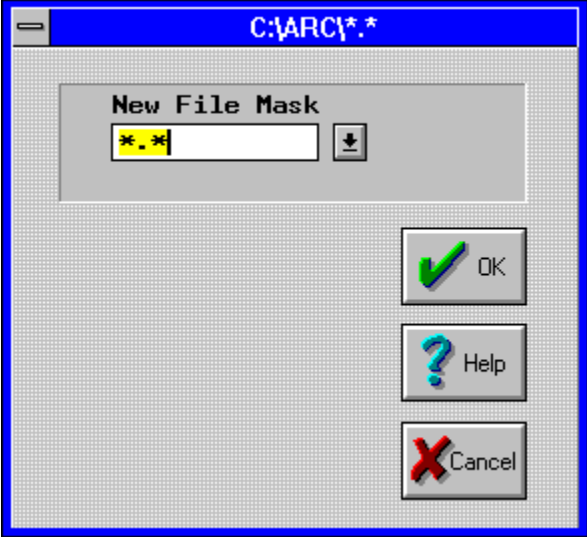
C:\X

1 files currently tagged
320,924 bytes currently tagged

Cancel

Help

The image shows a graphical user interface for an archiving program. At the top, a file named 'C:\ARC\GUIDE756.ZIP' is selected and highlighted in yellow. Below this, there are three buttons on the left: 'Pack Files' (with a pink folder icon), 'Yank Files' (with a cyan folder icon), and 'Baptize Files' (with a red folder icon). On the right, there are three buttons: 'Copy Files' (with a green folder icon), 'Move Files' (with a yellow folder icon), and 'Delete Files' (with a red folder icon). The main area is a large, empty grey rectangle. At the bottom, there are several panels. On the left, the 'Active System' panel shows three options: 'ZIP' (selected with a diamond), 'LHA', and 'ARJ'. In the center, the 'Destination Directory' panel has a text box containing 'C:\X'. Below that, a status panel shows '1 files currently tagged' and '320,924 bytes currently tagged'. On the right, there are two buttons: 'Cancel' (with a red 'X' icon) and 'Help' (with a question mark icon).



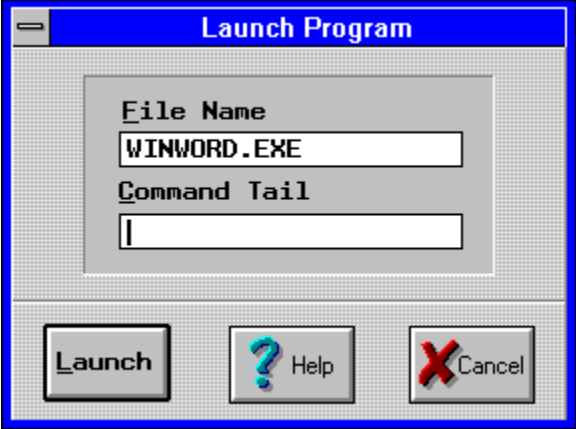
45 files in C:\ARC\GUIDE756.ZIP

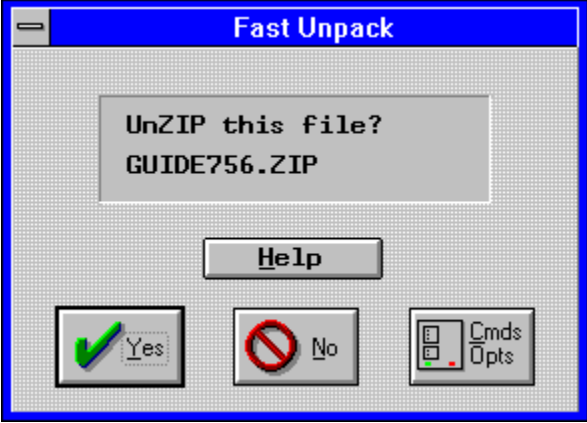
#1 PGUIDE.BAT

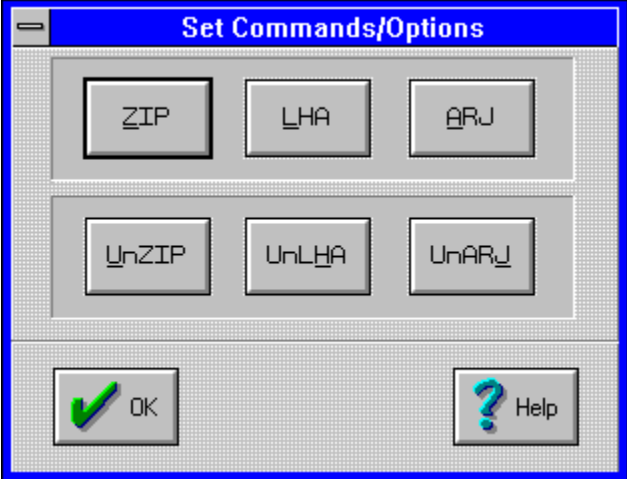
PGUIDE	BAT	05/31/92	07:56 AM	21	21
MGUIDE	BAT	05/31/92	07:56 AM	44	42
GUIDE	BAT	05/31/92	07:56 AM	17	17
9990	BLD	05/31/92	07:56 AM	2,194	1,046
6051	BLD	05/31/92	07:56 AM	859	409
5510	BLD	05/31/92	07:56 AM	3,634	1,584
4800	BLD	05/31/92	07:56 AM	3,159	1,517
2700	BLD	05/31/92	07:56 AM	9,211	3,432
1700	BLD	05/31/92	07:56 AM	5,354	2,096
1600	BLD	05/31/92	07:56 AM	3,049	1,420
1100	BLD	05/31/92	07:56 AM	2,986	1,282
MENU	COM	05/31/92	07:56 AM	2,540	2,106
10002	DOC	05/31/92	07:56 AM	727	617
10001	DOC	05/31/92	07:56 AM	1,494	750
WAGS	EXE	05/31/92	07:56 AM	33,032	33,032
TUT_PCL	EXE	05/31/92	07:56 AM	36,538	36,538
STAT_PCL	EXE	05/31/92	07:56 AM	35,466	35,466
REV_PCL	EXE	05/31/92	07:56 AM	35,477	35,477
PRE_PCL	EXE	05/31/92	07:56 AM	54,717	54,717
PCL	EXE	05/31/92	07:56 AM	32,759	32,759

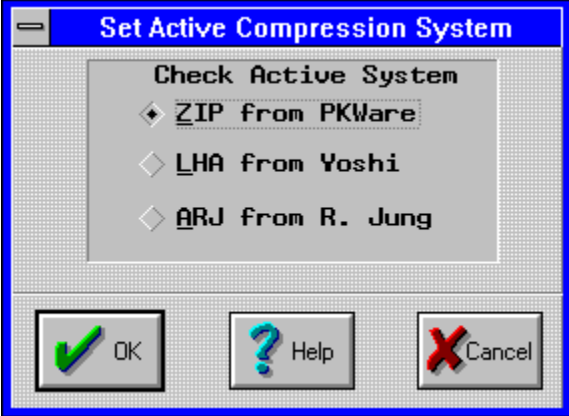
Files Tagged: 315,475 Compressed bytes
Bytes Tagged: 453,990 Normal bytes

Tags View UnZIP ? Help X Cancel

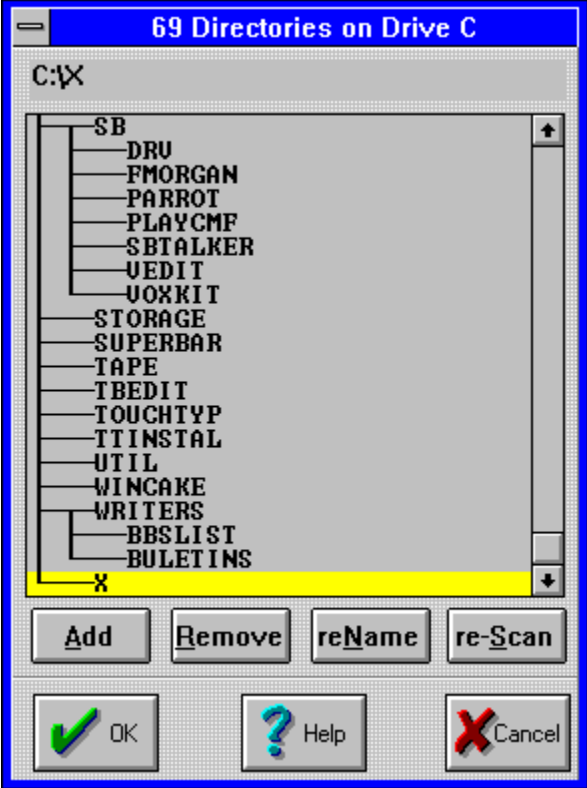




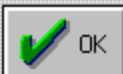
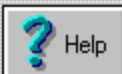



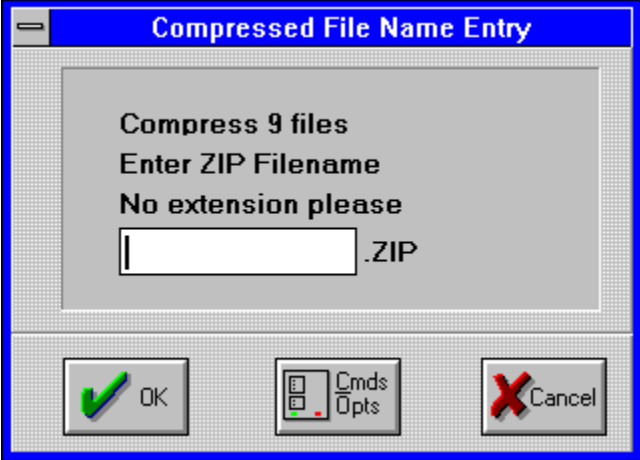


This merely clears any and all currently tagged files in both windows!

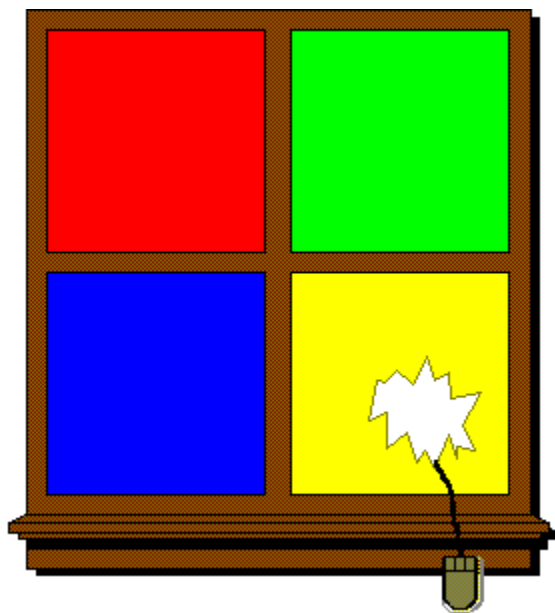


Main UNZIP Cmd	Extract Order	Other Options
<input checked="" type="checkbox"/> - <u>E</u> xtract	<input type="checkbox"/> -e <u>C</u> CRC	<input type="checkbox"/> - <u>D</u> UnZIP Path
<input type="checkbox"/> - <u>T</u> est	<input type="checkbox"/> -e <u>D</u> Date	<input type="checkbox"/> - <u>J</u> Mask Attr
<input type="checkbox"/> - <u>Q</u> uoverwrite	<input type="checkbox"/> -e <u>N</u> Name	<input type="checkbox"/> - <u>\$</u> Put Label
<input type="checkbox"/> - <u>N</u> ewer Only	<input type="checkbox"/> -e <u>E</u> Extension	<input type="checkbox"/> - <u>+</u> No EMS Use
<input type="checkbox"/> - <u>D</u> elete	<input type="checkbox"/> -e <u>P</u> Percent	
<input type="checkbox"/> - <u>F</u> reshen	<input type="checkbox"/> -e <u>S</u> Size	
<input type="checkbox"/> - <u>L</u> ist Files	<input checked="" type="checkbox"/> -e <u>X</u> None	
<input type="checkbox"/> - <u>V</u> iew Cmnts		
<input type="checkbox"/> - <u>C</u> hange Cmnts	View Order	
<input type="checkbox"/> - <u>A</u> SCII Prnt	<input type="checkbox"/> -v <u>D</u> Date	
<input type="checkbox"/> - <u>B</u> INARY Prnt	<input type="checkbox"/> -v <u>E</u> Extension	
<input type="checkbox"/> - <u>m</u> Full SFX	<input checked="" type="checkbox"/> -v <u>N</u> Name	
<input type="checkbox"/> - <u>ms</u> MINI SFX	<input type="checkbox"/> -v <u>O</u> Org	
	<input type="checkbox"/> -e <u>P</u> Percent	
	<input type="checkbox"/> -v <u>S</u> Size	

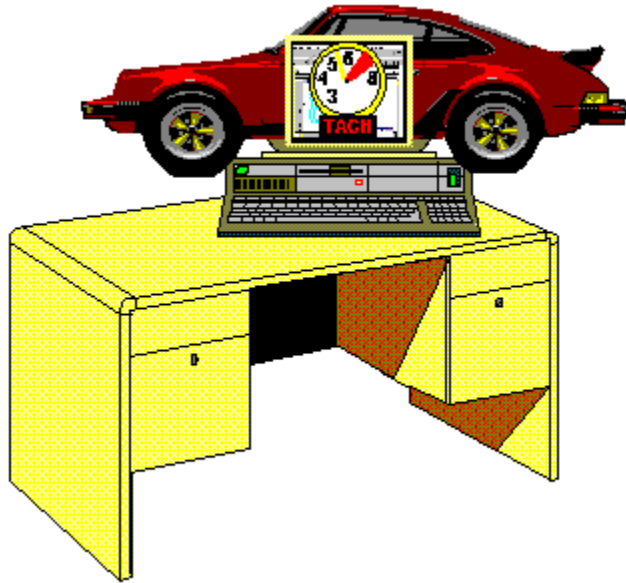


Main ZIP Cmd <input checked="" type="radio"/> - <u>A</u> Add <input type="radio"/> - <u>F</u> Freshen <input type="radio"/> - <u>U</u> Update <input type="radio"/> - <u>M</u> Move <input type="radio"/> - <u>C</u> Change	Attributes <input type="checkbox"/> - <u>jh</u> Hidden <input type="checkbox"/> - <u>jr</u> Read Only <input type="checkbox"/> - <u>js</u> System	Recursive <input checked="" type="radio"/> -none <input type="radio"/> - <u>r</u> Recurse <input type="radio"/> - <u>rp</u> Paths
Comp Mode <input type="radio"/> - <u>en</u> Normal <input type="radio"/> - <u>es</u> Fast <input checked="" type="radio"/> - <u>ex</u> eXtra	Include Options <input type="checkbox"/> - <u>wh</u> Hidden <input type="checkbox"/> - <u>ws</u> System	Other Options <input type="checkbox"/> - <u>P</u> Store Paths <input type="checkbox"/> - <u>C</u> File Cmnts <input type="checkbox"/> - <u>z</u> ZIP Cmnt <input type="checkbox"/> - <u>!</u> Authent <input type="checkbox"/> - <u>z</u> Vol Label <input type="checkbox"/> - <u>&</u> Multi-Vol <input type="checkbox"/> - <u>=</u> Compat <input type="checkbox"/> - <u>+</u> No EMS Use
Dates <input checked="" type="radio"/> - <u>k</u> Keep <input type="radio"/> - <u>o</u> Update Before <input type="text"/> After <input type="text"/>	Move Options <input checked="" type="radio"/> - None <input type="radio"/> - <u>nu</u> Update <input type="radio"/> - <u>nf</u> Freshen	
<input checked="" type="checkbox"/> OK	<input type="checkbox"/> ? Help	<input type="checkbox"/> X Cancel



WIN
grin
by Bob
Golliver

[Click Here](#)



So **that's** what happens when you press the Turbo key!





written by

Bob Gollihur

Windows Online
the Weekly

Staff Writer

o **MEMBERSHIP APPLICATION FORM** o

Windows OnLine
P.O. Box 1614
Danville, CA 94526-6614
(510) 736-8343 Modem
Members Voice Support (510) 736-4376

Fill out the application below, sign, and include your check or credit card information. Your application will be processed upon receipt.

Date _____

Full Name _____

Street Address _____

City _____ State _____ Zip Code _____

YOUR LOGON PASSWORD _____
(10 characters max.)

VOICE TELEPHONE NUMBER (_____) _____ - _____

DATA TELEPHONE NUMBER (_____) _____ - _____

I understand that the sysop is in no way responsible for the files I receive from Windows OnLine and that as a member, I will not be subject to any upload or download ratio. The sysop reserves the right to cancel this membership at any time and refund the balance on a pro-rated basis.

The membership plan I have chosen is (please choose one):

[] 12 Month SUPER MEMBERSHIP or 2000 file downloads = \$ 199.00
(120 minutes per day 5.00 mb per day download limit)

[] 12 Month FULL MEMBERSHIP or 700 file downloads = \$ 89.00
(70 minutes per day 2.00 mb per day download limit)

[] 6 Month FULL MEMBERSHIP or 300 file downloads = \$ 49.00
(60 minutes per day 1.25mb per day download limit)

[] 12 Months MAIL MEMBERSHIP includes 100 kb's per day = \$ 39.00
(35 minutes per day 100 kb per day file download)

Payment by (please choose one):

- Check
- MasterCard
- Visa

CARD Number: _____ Expiration: ____ / ____

Total amount : \$ _____ Signature _____
(Must be signed)

