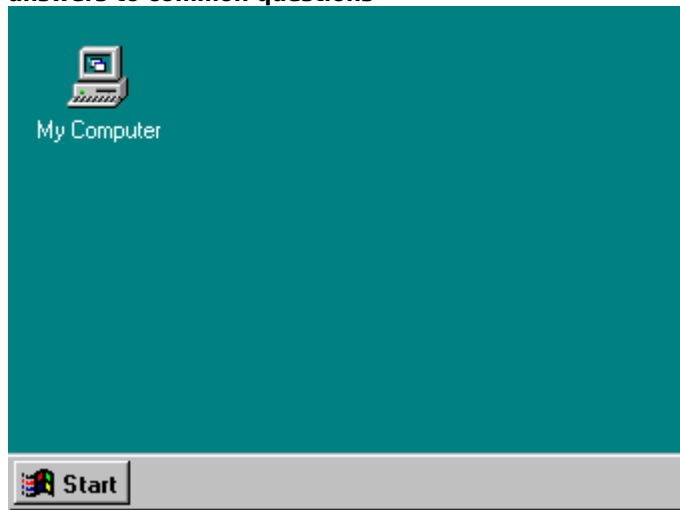


If you've used Windows before: answers to common questions

To find out how Windows has changed, click one of the buttons below.

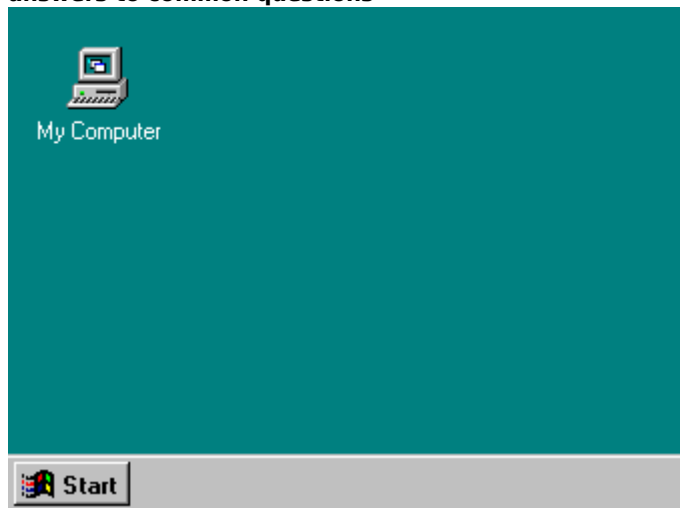
- [How do I start programs?](#)
- [What happened to my program groups?](#)
- [What happened to File Manager?](#)
- [What happened to Control Panel?](#)
- [More questions and answers](#)



If you've used Windows before: answers to common questions

To find out more about how Windows has changed, click one of the buttons below:

- [Where did the MS-DOS prompt go?](#)
- [What happened to the Run command?](#)
- [How do I copy files?](#)
- [How do I switch between tasks?](#)
- [Back](#)

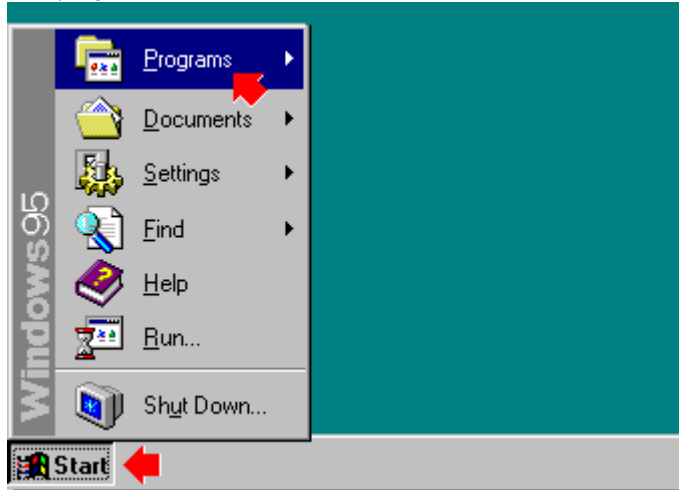


If you've used Windows before: answers to common questions

To find out how Windows has changed, click one of the buttons below:

- [How do I start programs?](#)
- [What happened to my program groups?](#)
- [What happened to File Manager?](#)
- [What happened to Control Panel?](#)
- [More questions and answers](#)

Your programs are in groups just like in Windows 3.1. To start a program, click the Start button, point to Programs, point to the folder that contains the program you want, and then click the program.

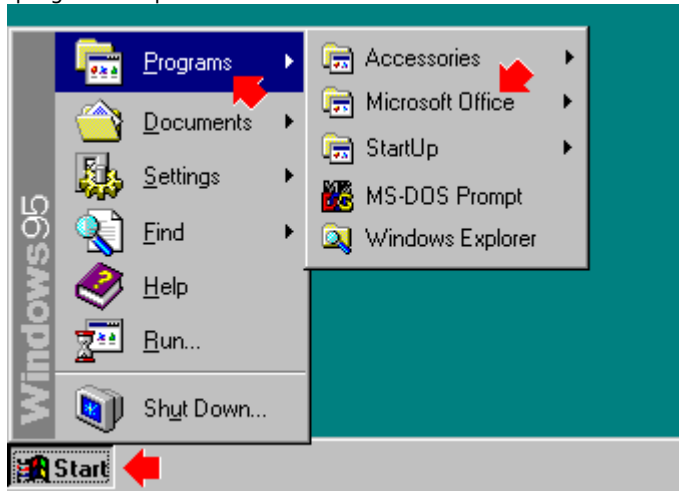


If you've used Windows before: answers to common questions

To find out how Windows has changed, click one of the buttons below:

- [How do I start programs?](#)
- [What happened to my program groups?](#)
- [What happened to File Manager?](#)
- [What happened to Control Panel?](#)
- [More questions and answers](#)

You can find your program groups by clicking the Start button, and then pointing to Programs. Your program groups appear as folders on the Programs menu. Point to the folder that contains the program you want, and then click a program to open it.



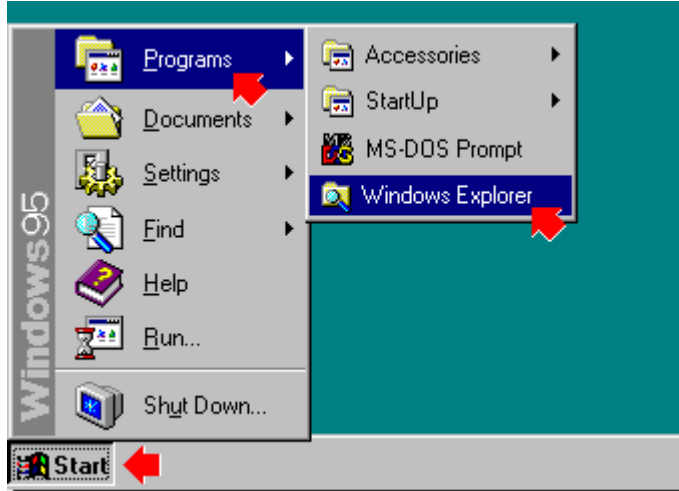
If you've used Windows before: answers to common questions

To find out how Windows has changed, click one of the buttons below:

- [How do I start programs?](#)
- [What happened to my program groups?](#)
- [What happened to File Manager?](#)**
- [What happened to Control Panel?](#)
- [More questions and answers](#)

Windows Explorer works a lot like File Manager but has the added benefit of displaying all of your drive connections in one window.

To open Windows Explorer, click the Start button, point to Programs, and then click Windows Explorer.

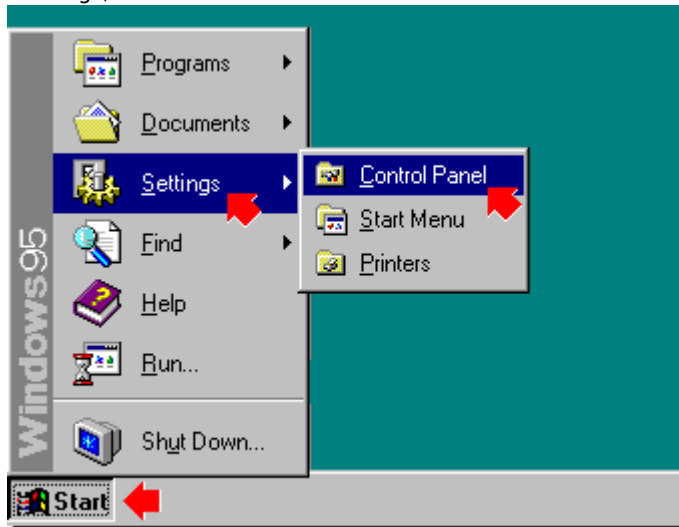


If you've used Windows before: answers to common questions

To find out how Windows has changed, click one of the buttons below:

- [How do I start programs?](#)
- [What happened to my program groups?](#)
- [What happened to File Manager?](#)
- [What happened to Control Panel?](#)**
- [More questions and answers](#)

To open Control Panel, click the Start button, point to Settings, and then click Control Panel.

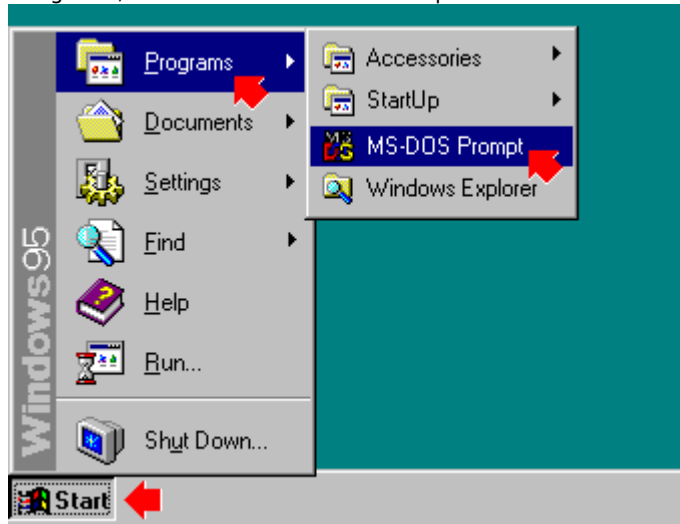


If you've used Windows before: answers to common questions

To find out more about how Windows has changed, click one of the buttons below:

- [Where did the MS-DOS prompt go?](#)
- [What happened to the Run command?](#)
- [How do I copy files?](#)
- [How do I switch between windows?](#)
- [Back](#)

The MS-DOS prompt is now located in the Programs folder. To open an MS-DOS window, click the Start button, point to Programs, and then click MS-DOS Prompt.

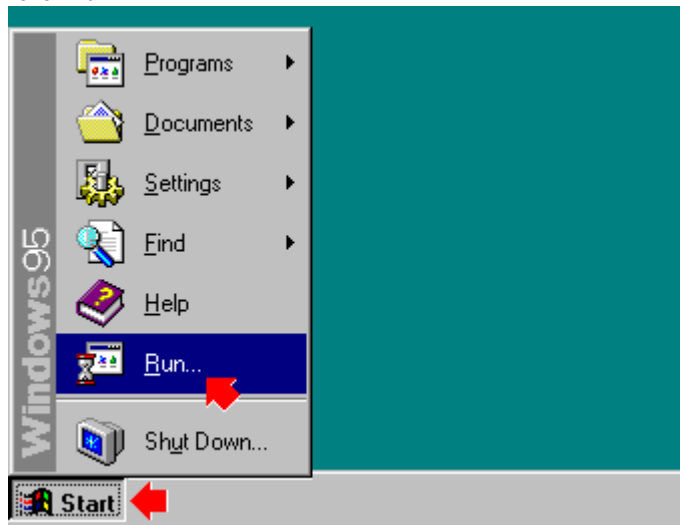


If you've used Windows before: answers to common questions

To find out more about how Windows has changed, click one of the buttons below:

- [Where did the MS-DOS prompt go?](#)
- [What happened to the Run command?](#)
- [How do I copy files?](#)
- [How do I switch between windows?](#)
- [Back](#)

To use the Run command, click the Start button, and then click Run.

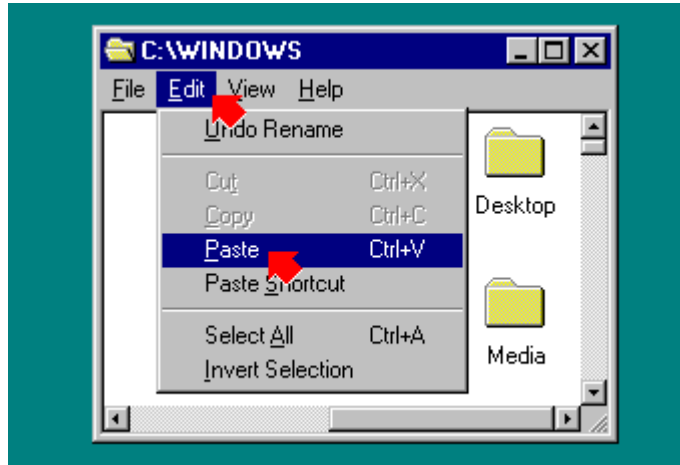


If you've used Windows before: answers to common questions

To find out more about how Windows has changed, click one of the buttons below:

- [Where did the MS-DOS prompt go?](#)
- [What happened to the Run command?](#)
- [How do I copy files?](#)**
- [How do I switch between windows?](#)
- [Back](#)

You can copy files the same way you copy and paste text. First, select a file in either My Computer or Windows Explorer. Click the Edit menu, and then click Copy. (A dialog box no longer appears.) Open the folder in which you want to put the file you are copying, click the Edit menu, and then click Paste.



If you've used Windows before: answers to common questions

To find out more about how Windows has changed, click one of the buttons below:

- [Where did the MS-DOS prompt go?](#)
- [What happened to the Run command?](#)
- [How do I copy files?](#)
- [How do I switch between windows?](#)**
- [Back](#)

To switch between windows, click the button on the taskbar that represents the window you want to switch to.



This is just an illustration. Click one of the buttons on the left to learn about Windows.

You cannot practice here. If you want to try opening Windows Explorer, click the Start button.

You cannot practice here. If you want to try opening a program, click the Start button in the lower-left corner of the screen.

You cannot practice here. If you want to view your program groups, click the Start button, and then click Programs.

You cannot practice here. If you want to open Control Panel, click the Start button, and then click Settings.

You cannot practice here. If you want to use the MS-DOS prompt, click the Start button, click Programs, and then click MS-DOS Prompt.

You cannot practice here. If you want to enter a command by using the Run dialog, click the Start button, and then click Run.

You cannot practice here. If you want to copy and paste, you must open a document first. If you need more help, click the Start button, and then click Help.

You cannot practice here.

Click [Help Topics](#) to return to the list of topics.

