



Copyright © 1993 All Rights Reserved.

**Thankyou for downloading and trying out Ghost Cemetery™ for Windows!**



Remember to support the Author efforts if you like to own this game or decide to keep this game on your Hard disk. This game is not free to keep without mailing in your registration form and the Author requested shareware fee of only \$5.25 + .52 cents for s/h. I'll mail you the latest copy of this game to you on a 3.25 disk unless you request 5.25 disk is also available.

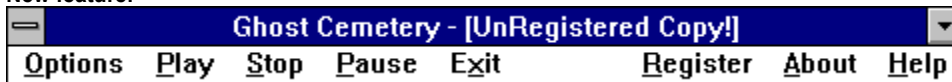
Please to register this game so I can continue bringing you some fun and easy games to play under Windows!

It is such small request for so much features, and I know you'll like the special sound effects you hear in this game.

All my games and the new Ghost Cemetery all have these new features. More games will follow, base on Space, Medieval, Westerns, Bombs, Triple 3D Simulated Skyscapers, and more funny games like feed crying baby Brats etc.. Much more animation in both graphics and mouse cursor actions. Plus More Wave Sound Effects, Real, Created with Female voices!

To find out more you should register today and if you would like to get my latest game catalog just send in a self-address envelope to the author which is me. See the enclosed ORDRFRM.WRI file for a mini sneak preview of what is coming up in the future. Or take a peek at my all new Windows Game Catalog under the file name GAMECAT.TXT. or GAMECAT.WRI

**New feature!**



Fast game play access with your mouse, no more going through pull down Game menu drop access to start the game. Just click on Play to play the game right now or Pause the game if you got a phone call or etc..

The word Continue will appear when you click on Pause then click on Continue to play on! Reset the game anytime you want during a game or even on pause by hitting Play again to start a new game! Stop the game now and bring up the introduction screen for a full game restart. This will happen anyway when your game is over then click on play again to start.

Also when you do a full Exit out while playing a game whenever you want instead of double clicking on the left bar. This comes in handy if your boss is coming near your work area! For each time you use any of the above menu items you'll hear wave sound effects just like you hear from Windows. Includes female voice greetings on Play, Stop, GameOver and Exit.

**Note: Under this ShareWare version Options is disable and game play is set by the Author. When you register this copy Options will**

**be enable for you to change speed, target count, time!**  
**This is why your strongly encourage to mail in your registered fee to the author.**

**New feature!**

## **GAME OVER**

Is back just to let you know when the game is over!  
New added feature now does an automatic Pop Up!

**New feature!**



When you see this label Wave System Sound, is available only if you have either of the following; Sound Card or Board installed or Speaker.driv to play the wave sound through your build in Pc speaker. Sound Card option is better, since you can play the wave sound through you mini amp spks or through your home stereo unit.

**Note:** Ghost Cemetery sounds are real sounds effects and are not computer generated, or fake arcade sounds! Click on any main menu item from Options thru Help and you will hear tank wave sounds also. Now you'll also get real female voice announcement when you click on Exit, Play, Stop and when the Game is Over that will be address to you.



Since this game is a **ShareWare Copy** and is only for evaluation purposes only **OPTIONS is not available**, and I already setup the game time to 2:00 minutes, speed is just slow and the number of open targets is less. This will give you a good idea what you can get when you send in your **Register fee** of only \$5.25 plus .52 cents for shipping/ handling.

Under the registered version target windows are set to the max, game speed is normal an game time is set to 3.5 minutes game play. You may change these setting if you like and game play can even be set to 1 second to 10 minutes. You also get higher scoring than the shareware version.

On the main menu Register is replace with Hints on the game. Also when you register this game you'll can also get a none sound version & this sound version for the same shareware fee if you like. Registered users get, TipNews Letter when it's available, coupons off your next order of games.



### **Ghost Cemetery Plot:**

Ghost Cemetery puts you right into the church graveyard. Here you'll see the 3D 3-Sided Church with fenced in graveyard. When the game starts you'll begin seeing moving 3D tomb stones that read Rest In Peace.

Your mouse will turn into Little Joe who will be carrying his flashlight in his right hand. As you click down on your mouse button you'll be able to make Little Joe walk and flash his flashlight at the tomb stones.

**WATCH OUT YOU MIGHT WAIT UP THE SLEEPING GHOST???**

More info on the main menu line under **Help**



### **Installation Game Step 1**

1.To install this game you should not place it in your C:\WINDOWS or C:\WIN31 or C:\W31 directory, but into it's own subdirectory like in this example:

C:\WINDOWS\GAMES

This way you don't have to clutter up your main Windows directory with all these games.

**Step 2.**

Just copy either one to your game directory or whichever you choice to place them.  
In this example it would be COPY GHOST.EXE C:\WINDOWS\GAMES

**Step 3.**

Now that the file contains is dump out, you can use the FileManger and Program Manager to drag and drop the GHOST.exe to your favorite program goup. This is one way you can do this! The other way is that you can use the Program Manager New item feature and insert GHOST.exe that way.

**Step 4.**

Add the game to one of your ProgMan Manager Group files or leave it as a Icon button by doing a drop and drag in Norton Desktop, Pc Tools for Windows, or run it from DashBoard quick icon launcher or Program Menu.



**Wave Sound Files**

To install the wave files for this game place them in your Windows directory or better yet create a SOUND directory and copy all your current wave files to that directory. Add this SOUND directory to your PATH line in the autoexec.bat file.

Also make sure your using a sound card, like Sound Blaster or any other wave form compatible card. Also for PC speakers users only you can download SPEAKER.ZIP and use your PC speaker to pick up Wave sound file also. But having the Sound Card is the better route to go!

Wave files included are in WAVEFILE.EXE:

GHOST.WAV, HBELL.WAV, CLEAR.WAV, RESET.WAV, GDBYGH.WAV

See Author.Wri or Author.txt for installation instructions on how to best install these files with Ghost Cemetery.



**Don't forget to Register Ghost Cemetery Today!**

**Don't forget to take a peek at GAMECAT.TXT or GAMECAT.WRI**

**Don't forget to use ORDRFRM.WRI or ORDRFRM.TXT to register this game.**

**Don't forget this is not a free game Support The Author Efforts!**

**Thanks again for your support!**

**Author ID**

If you have any questions, or any comments? I can be contacted through;

**Internet: tipstir@aol.com**

**America On-line: TipStir**



**Ghost Cemetery™ v1.0 © 1993**

PCSTS™ © 1993

Tip Software™ Products

Designed by Albert C. Ashton

All Rights Are Reserved.

12:00PM 10/13/93