

**This file , Robert Schlackman 06/09/96yesyesyesyesE-Chesse-
chessyesyes**



E-Chess Table of Contents

Main Topics

[What is E-Chess?](#)
[Creating a new game](#)
[Mail setup](#)
[Mail options](#)
[Tech support](#)
[Registration](#)
[Product Information](#)
[About Shareware](#)

How To

[Move a piece](#)
[Take back](#)
[Send mail](#)
[Flip the board](#)

Help file produced by **HELLLP!** v2.7c , a product of Guy Software, on 6/14/96 for Unregistered User.

The above table of contents will be automatically completed and will also provide an excellent cross-reference for context strings and topic titles. You may leave it as your main table of contents for your help file, or you may create your own and cause it to be displayed instead by using the I button on the toolbar. This page will not be displayed as a topic. It is given a context string of `__` , but this is not presented for jump selection.

HINT: If you do not wish some of your topics to appear in the table of contents as displayed to your users (you may want them ONLY as PopUps), move the lines with their titles and contexts to below this point. If you do this remember to move the whole line, not part. As an alternative, you may wish to set up your own table of contents, see Help under The Structure of a Help File.

Do not delete any codes in the area above the Table of Contents title, they are used internally by HELLLP!

What Is E-Chess?

E-Chess is a tool for tracking e-mail chess games. Have you ever had a conflict with your chess opponent because either you or your opponent was confused about a move made earlier in the game? E-Chess is designed to minimize and hopefully eliminate that problem. If you play or would like to play chess with someone through electronic mail, E-Chess is for you.

E-Chess provides you with a graphical environment for playing your chess game. Only valid moves are allowed as you and your opponent take turns sending mail. Almost any e-mail program is usable from within E-Chess. Simply by clicking one button the current status of your game is mailed to your opponent.

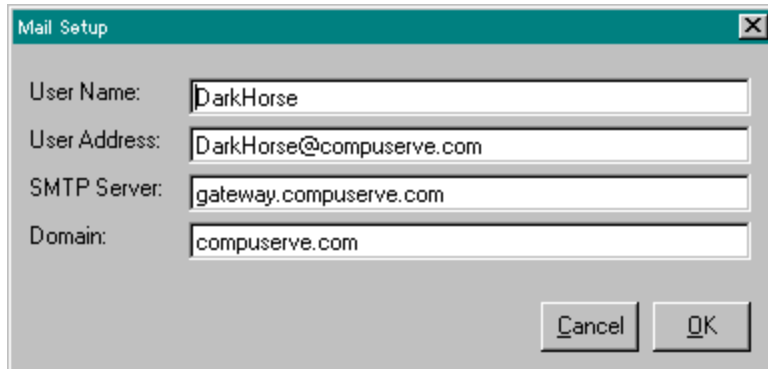
Support for SMTP Internet e-mail is provided. There is no need to use any other program to connect to your internet provider and send mail. E-Chess will automatically connect via the Windows 95 dialer and send your mail.

If you have any questions please feel free to call or write tech support at any time.

Creating a New Game

Choose File-New from the menu bar to create a new game. This sets up the board for a new game. The next step is to set up up you mailing options and if you haven't done it already, setup your personal mail information. That's it. You are ready to play chess.

Mail Setup



The image shows a 'Mail Setup' dialog box with a title bar containing a close button. It contains four text input fields and two buttons. The fields are labeled 'User Name:', 'User Address:', 'SMTP Server:', and 'Domain:'. The values entered in the fields are 'DarkHorse', 'DarkHorse@compuserve.com', 'gateway.compuserve.com', and 'compuserve.com' respectively. The buttons are labeled 'Cancel' and 'OK'.

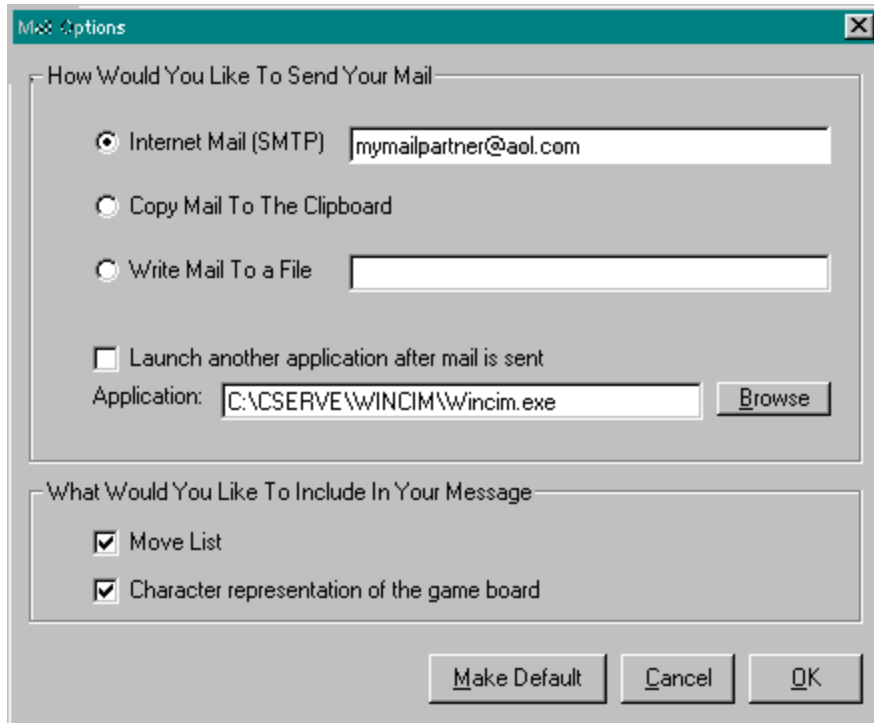
User Name:	DarkHorse
User Address:	DarkHorse@compuserve.com
SMTP Server:	gateway.compuserve.com
Domain:	compuserve.com

Buttons: Cancel, OK

Enter information pertaining to your specific e-mail address. You must have an internet account which supports SMTP mail to have the ability to send [internet mail](#). You should consult with your internet provider if you do not know your gateway or domain.

Please feel free to contact [tech support](#) for specific instructions on how to set up Compuserve to use the Windows 95 dialer for an internet connection. Some documents related to this topic can be found in Compuserve's Internet forum.

Mail Options



The mail options dialog is separated into 2 sections. This is where the method of mail transport is configured for the game you are currently playing. All this information will be saved with the current game.

1. How Would You Like To Send Your Mail?
 - Internet Mail
 - Copy Mail To The Clipboard
 - Write Mail To File
 - Launch another application after mail is sent
2. What Would You Like To Include In Your Message?
 - Move List
 - Character representation of the game board

You can make the current settings the default for future games by clicking the default button.

Tech Support

To report bugs or ask questions on any topic related to E-Chess, please write me at DarkHorse@compuserve.com or 70400.1370@compuserve.com. The program is designed to create a text file on your hard drive called ECHERROR.LOG. If you are sending e-mail to report a problem, please send this file or the text contained within the file.

If you try calling on weekends or evening hours you may be able to catch me. The number for Dark Horse Software is (516)-427-5387. Just ask for Robert. I will try to be as helpful as I possibly can.

Registration

To register E-Chess click on the Help menu item in the program and select Ordering Information. We currently accept Visa, Mastercard, check or money orders. Unfortunately, we do not have someone who can answer the phones at all times. To compensate for this we can accept faxed order forms printed from the E-Chess application.

Please complete the entire form. When you are ready, click the total button and print the form. Depending on the choices you make on the ordering screen, different charges will be added to the total section at the bottom right of the form.

There is no shipping fee charged when you choose to receive your key via email. The key is a unique code which will unlock all the features of E-Chess.

The unregistered version is limited to 25 moves.

[About Shareware](#)

Moving a Piece

To move a chess piece you must drag and drop the chess piece using a mouse. Chess pieces can not be moved out of turn or into illegal squares. Promotions, castling, enpassant and take backs are supported. If a piece is dragged off the board or not dropped within 5 seconds, that piece is automatically placed back on the square it started from.

Take Back

A piece can be taken back on either side at any time using the menu item Edit-Take Back. Pieces can be taken back all the way to the start of the game. Take backs can not be undone.

Send Mail



Once you have your mail_setup configured and your mail_options set, click the mail send button to send you mail.

Flipping The Board



White and black can change sides, but once the first move is made the board can not flip again.

About Shareware

Shareware is copyrighted software that is distributed by authors through bulletin boards, on-line services and disk vendors.

Shareware allows you to try the software for a reasonable limited period. If you decide not to continue using it, you throw it away and forget about it. You only pay for it if you continue to use it. Shareware is a distribution method, not a type of software. You benefit because you get to use the software to determine whether it meets your needs, before you pay for it.

The shareware system and the continued availability of quality shareware products depend on your willingness to register and pay for the shareware you use. It's the registration fees you pay which allow authors to support and continue to develop our products. Please show your support for shareware by registering those programs you actually use.

Even if the person who supplied you with the software tells you that registration is not necessary, be assured that if the copy of the program presents a screen reminding you to register, then the author has not been paid for that copy and registration is necessary.

E-Chess supports the SMTP internet mail protocol. If you have an internet service provider you can send mail directly to your opponent without any other software. Contact your internet provider to determine what your mail setup options should be. Insert your opponents internet mail address in the space provided.

Note: The Microsoft Network does not support SMTP.

Choose this option to output your mail to the Windows clipboard. From the clipboard the mail message can be pasted into any e-mail program.

Choose this option to output your mail to a file when mail is sent. Enter the name of the file in the space provided.

Choose this option to launch an application after a mail message is either sent via internet mail, written to the clipboard or sent to a file. If your service provider does not support SMTP you can launch your e-mail application using this feature.

Include the move list for the current game in the e-mail message.

Include a character representation of the game board in your e-mail message. If your opponent has any questions about the last move you made, he/she will clearly be able to see the move on the game board using an e-mail reader which displays characters in a courier font.

Product Information

To receive product information about E-Chess or other products produced by Dark Horse Software visit our web site. Our URL is <http://ourworld.compuserve.com/homepages/DarkHorse>.

