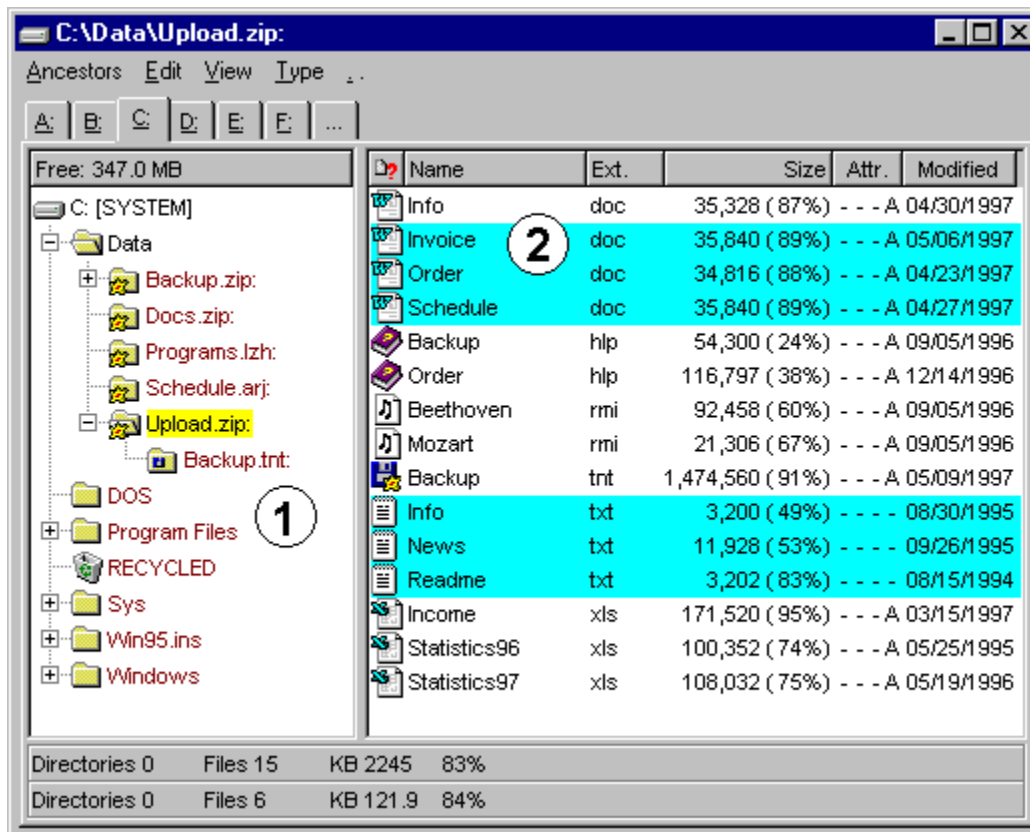


- New in Release 1.90 (May 1997)

New Features...

- **Better adaptation of the T.N.T. display windows to the Explorer...** The representation of tree structures corresponds to the Explorer now. If desired, the handling of files and directories, i.e. selecting entries as well as drag-and-drop, can be done by means of the left mouse button and according to the Windows® standard.



1. Tree Structures with [+] Symbols...

Preliminary remark: In the T.N.T. display windows, the [+] symbols, which serve to identify those folders that contain subfolders, are determined in the background. The tree structure itself appears instantly and you can operate on it immediately. Therefore (dependent on the speed of the drive) the [+] symbols appear with a short delay.

On the 'Directory' page of the 'Settings' property sheet, there are three check boxes by means of which you can enable/disable the determination of the [+] symbols for the following groups of drives: 1. floppy disks and CD-ROMs, 2. hard disks and RAMDrives, 3. net drives. If you want to avoid the background activity that is caused by the determination of the subdirectories, check the respective check box for the corresponding drive type.

Note: For archive files (files that have the filename extension '.ZIP', '.RAR', '.LHA', '.LZH', '.LZS', '.ARJ', '.TAR', '.GZ', '.Z', '.TGZ', '.TNT' and '.VCP' are automatically treated as archives) it is determined likewise whether they contain subdirectories and [+] symbols are displayed if necessary. A [!] symbol in front of an archive indicates that the type of the archive could not be determined. (The archive may be in use by

another program at the moment or the file may indeed have an unknown format.)

2. Drag-and-Drop with the Left Mouse Button...

Preliminary remark: By default, inside 'The Next Tool' only selecting entries is done by means of the left mouse button and the selection is persistent. That means that selected entries remain selected if another entry is clicked with the left mouse button. By dragging the mouse with the left button pressed, you can continuously select entries. Drag-and-drop is done by means of the right mouse button.

To activate selection and drag-and-drop with the left mouse button according to the Explorer, check the 'Left mouse button Explorer compatible' check box on the 'General' page of the 'Settings' property sheet or choose 'Left mouse button Explorer compatible' from the 'Configuration\Mode' submenu of the T.N.T. main menu. (Note: To open the main menu, click the button or the icon of 'The Next Tool' in the taskbar with the right mouse button.) Activating the 'Left mouse button Explorer compatible' feature has the following consequences:

- The selection of entries (files and directories) is no longer persistent. If you click an entry with the left mouse button, all entries that were selected previously are deselected. To select a number of entries, keep the 'Control' key pressed while clicking on further entries. To select a number of successive entries, keep the 'Shift' key pressed.
- Drag-and-drop of entries (files and directories) can also be done by means of the left mouse button. The continuous selection of entries by dragging the mouse with the left mouse button pressed is no longer possible.
- Working on tree structures (i.e. expanding or folding up branches) is done by means of the left mouse button according to the Explorer. Completely expanding or folding up a branch by dragging the mouse with the left mouse button pressed is no longer possible. (Note: For a detailed description of the T.N.T. like handling of tree structures refer to the 'Expanding and Folding Up the Branches of Tree Structures' section of the online manual.)
- **Notification when deleting in archives...** When deleting files inside an archive, a warning appears to notify that deletions inside archives cannot be undone by means of the Windows® recycle bin. You can disable future appearances of this notification by checking the corresponding check box in the notification itself. To enable the notification again, uncheck the 'No -Recycle bin does not work in archives- warning' check box on the 'Commands' page of the 'Settings' property sheet.
- **Notification when copying archives...** If you specify a number of archives as source files for a copy task, there will be a notification asking whether you want to copy the archives or extract their contents. You can disable future appearances of this notification by checking the corresponding check box in the notification itself. Archives are then always treated as files. To enable the notification again, uncheck the 'No -Extracting instead of Copying- Notification' check box on the 'Commands' page of the 'Settings' property sheet.
- **Early writing of archive headers...** The header structures of archive files are written as early as possible, before the actual contents of the archive is written, in order to minimize the loss of data in case of a system crash.
- **ASP membership...** We are now a member of the Association of Shareware Professionals <ASP>.

Removed Bugs...

- **Determining the date format...** The date format (MM/DD or DD/MM) is now determined from the Windows® settings.

- **Displaying directories that have more than 999 subdirectories...** Now, there are four digits in the status bars of the display windows to display the number of subdirectories.
- **Optimizing the width of display windows...** Optimizing the size of a display window (by double-clicking the title bar of the window or by pressing the maximize button) as well as restoring the original size did not work properly in case the optimal width of the window was wider than the screen size.
- **Deleting or moving files and directories...** When deleting or moving files or directories, 'The Next Tool' might have crashed if several tasks were working on the same data.
- **Modified attributes of directories...** If the attributes of a directory were modified by another application while T.N.T. was executing a file command in a subdirectory of the respective directory, T.N.T. might have crashed when the command was finished.
- **Drag-and-drop of files in the 'Menus' dialog box...** 'The Next Tool' crashed if files were dropped on the 'Filename Patterns' pane of the 'Menus' dialog box if a pre-defined menu was selected in the 'Menus/Groups' pane.
- **Changing the drive of a display window...** When changing the drive of a display window, the window was closed if the new drive was not accessible. Now the old drive is displayed again.
- **Execution of external programs...** An external application that was started by T.N.T. might have opened outside the visible area of the screen.
- **Replacing strings in the text editor...** When replacing strings in the text editor with the 'Confirmation before replacing' feature enabled, the string that was found might not have been visible when the request for confirmation appeared.

See also:

[New in Release V1.81 \(January 1997\)](#)

- New in Release V1.81 (January 1997)

This is the first English release of the software 'The Next Tool' for Windows® 95. You can obtain new releases of the software online at the following locations (information is subject to change):

- WWW...

<http://members.aol.com/TNTWin/>

- FTP...

```
members.aol.com
cd /TNTWinENG
binary
get tntwin95.exe
```

- AOL@...

<will be updated soon>

- CompuServe@...

<will be updated soon>

- NEXUS BBS...

+49 - 511 - 95 088 97 (28800 Baud and ISDN)
Login: tnt95eng Password: guest

- FIDO Request...

2:2437/38 (28800 Baud and ISDN)
Magic: TNT95ENG

In case of further questions or comments, please contact:

Mail:

Joerg Schliesser
Software Development
Rotenwaldstr. 41 A
Stuttgart, 70197
Germany

Fax:

+49 - 711 - 65 99 556

E-mail:

TNTWin@aol.com
TNTWin@compuserve.com

FIDO:

Christian Hagenah@2:2487/3002.3

