



# *Nilbuild 2.0*

Copyright (C) 1993, Monarch Software

## **Welcome to NILBUILD!!!**

**NILBUILD** is a freeware utility for the Norton Desktop that automates the process of importing icons (**.ICO** files) into Norton Icon Libraries (**.NIL** files). New for version 2 is the ability to **export** icons from **.NIL** as well as from **.EXE** and **.DLL** files.

If you have already gone through the installation process, you can get started quickly by double clicking on the **NILBUILD** icon. You will then be prompted for all necessary information. If you need further assistance, refer to the prompt mode procedures section.

**NILBUILD** also supports "**drag and drop**" launching for a limited number of **.ICO** files. For larger numbers of files, a technique known as "**file select**" can also be used. For more information on these methods, read the section on modes of operation followed by the advanced procedures section. The **BROWSE** buttons will guide you through all the relevant topics in the proper sequence.

**Note:** It is **highly** recommended that you install the NFIXICO program if you haven't done so already.

### **Contents:**

- System Requirements
- NFIXICO
- Installation
- Prompt Mode Procedures
- Modes of Operation
- Advanced Procedures
- Reports
- Error Messages
- Troubleshooting
- File Listbox
- Directory Listbox
- License Agreement

## **NFIXICO**

Approximately 10% of all public domain icons contain an irregularity that prevents them from being read by the **Norton Icon Editor** and by **NILBUILD**. It is, therefore, **highly** recommended - almost **essential** - that you install the **NFIXICO** program. If properly installed, **NILBUILD** will automatically run **NFIXICO** to remove these irregularities.

**NFIXICO** is, unfortunately, **not** a public domain program and cannot be distributed along with **NILBUILD**. However, Symantec has made the program available free-of-charge to registered Norton Desktop users via the **Symantec BBS**. The program **NFIXICO.EXE** is contained in the ZIP archive **FIXICO.ZIP** posted on the **NDW** section of the BBS at **1-408-973-9834** (9600 baud) and **973-9598** (2400 baud).

See the [installation](#) section for directions on how to install **NFIXICO**.

**Monarch Software**

P.O. Box 2574

Goleta, CA 93118

(805) 685-4751 fax/voice mail

## License Agreement

### Use of this software implies acceptance of the following terms:

- **NILBUILD** is Copyrighted (C) June 1, 1993 by Monarch Software.
- This software may be used for personal or non-profit applications without fees or royalty payments of any kind. However, use of **NILBUILD** in commercial, business, or government applications requires permission from the authors. Hospitals and health-care facilities are exempt.
- **NILBUILD** may be freely distributed provided that:
  - 1) it is distributed in its original form without modification.
  - 2) it is not sold for profit nor bundled with other software.
  - 3) it is distributed with all five files intact. (See Installation.)
- The user has **read** and has **understood** the disclaimer below.
- The user will find this software **enjoyable** and **convenient** or he will contact the authors and tell them why not.

### Disclaimer

- **NILBUILD** is neither published nor endorsed by the **Peter Norton Group** nor by **Symantec Corporation**.
- **Windows** is a trademark of **Microsoft Corporation**. **Norton Desktop** and the **Norton Icon Editor** are trademarks of the **Symantec Corporation**.
- **NILBUILD** is offered without warranty or liability of **any** kind. The authors are not responsible for hardware or software damage, loss of data, lost business profits, hurricanes, floods, earthquakes, or the death of indoor houseplants resulting from the use, misuse, or abuse of this software.

## Installation

Please read the [system requirements](#) and the [NFIXICO](#) section if you haven't already done so.

### **NILBUILD** is comprised of **FIVE** separate files:

- NILBUILD.EXE** - the main executable file
- NILBUILD.SUB** - file containing subroutines used by **NILBUILD.EXE**
- NILBUILD.HLP** - this **HELP** file
- NILBUILD.DOC** - a documentation file containing installation instructions
- NFIXICO.PIF** - a **PIF** file used by the optional, but **highly** recommended [NFIXICO](#) program

Please make sure that you have all **5** of these files before you begin the installation process.

## Procedure

### 1) Create the **NILBUILD** program icon.



To use **NILBUILD**'s **drag & drop** and **file select** features, it is necessary to launch **NILBUILD** from a program group or desktop icon. The easiest way to create this icon is to "**drag**" the **NILBUILD.EXE** file out of a drive window and "**drop**" it onto a program group or desktop. The icon (above) will appear automatically. (See the **Norton Desktop User's Guide**, pages 2-22 and 5-16.) The **NILBUILD.EXE** file can be copied into any directory prior to creating the icon, but it is recommended that it be placed in the [Norton Desktop directory](#) along with the other required files. (see #2 below)

### 2) Copy the **NILBUILD** files into the appropriate directory.

Copy the following files into the [Norton Desktop directory](#). It is important that **NILBUILD.EXE** **not** be moved after creating the icon in step #1.

**NILBUILD.SUB**  
**NILBUILD.HLP**  
**NILBUILD.PIF**

### 3) Extract and install the optional **NFIXICO.EXE** program.

If you have obtained the file [FIXICO.ZIP](#), you must first extract the file **NFIXICO.EXE** from the archive. To extract the file, use **PK-Unzip** or another ZIP compatible archiver. Copy the extracted file into your [Norton Desktop directory](#). **NFIXICO** can then be used by **NILBUILD** to repair icons automatically.

## System Requirements

To run **NILBUILD** you must have **Windows 3.0** or better and the **Norton Desktop for Windows 2.0** or better. The following files must be present in the Norton Desktop directory:

**ICONEDIT.EXE** - necessary for **ALL** procedures  
**BATCHRUN.EXE** - necessary for file select operation  
**NVIEWER.EXE** - necessary for displaying **.NIL** libraries

Additionally, the file **CLIPBRD.EXE** must be in the main **WINDOWS** directory in order for **NILBUILD** to display reports. Norton Desktop must be defined as the **shell** in order for the drag & drop feature to work.

**Note:** If you have installed both **Windows** and the **Norton Desktop** correctly, these files should already be in their respective directories. However, if you have made any changes to the setup, or if **NILBUILD** reports missing files, you should double-check the location of each file.

**PKZip**, along with its companion program, **PKUnZip**, is a compression and archiving tool available as **shareware** (fee required) from most bulletin boards or directly from the publisher:

**PK-WARE, Inc.**  
9025 N. Deerwood Dr.  
Brown Deer, Wisconsin 53223  
(414) 354-8699

Look for the **NEWEST** version, which is **2.04g** as of 6/93.

## Prompt Mode Procedures

This section describes basic **prompt mode** procedures. For a description of how to work with **drag & drop** and **file select** modes, refer to the advanced procedures section.

### Important!!

**NILBUILD** will **not** run if the **Norton Icon Editor** is already open. You must close the editor prior to running **NILBUILD** or fatal Error 101 will result.

### A) Importing Icons

- 1) Prepare a source directory containing all of the **.ICO** files you wish to import.
- 2) Launch **NILBUILD** by double-clicking on its icon. **NILBUILD** will come up in prompt mode and you will be presented with the prompt mode menu. Choose option "**A**" from the menu.
- 3) Choose a target library from the listbox. If you specify a non-existent library, you will be given the option of creating it.
- 4) Choose the source directory from the next listbox.
- 5) Enter up to **nine** filenames or wildcards specifying **.ICO** files that you wish to import. If you wish to import **all** of the **.ICO** files in the directory, enter **\***.
- 6) If you have NFIXICO installed correctly, **NILBUILD** will give you the option of **FIX**ing the icons in the source directory. Unless the icons have already been fixed, it is recommended that you answer in the affirmative.
- 7) The **import** process will commence. You must hold down the **CONTROL-key** for several seconds if you wish to **abort**. A report will be generated when the process terminates.

### B) Exporting Icons

- 1) Determine how many icons you want to export. If your source library is an **.NIL** file, **NILBUILD** will export **ALL** the icons in the file by default. However, if your source is an **.EXE** or a **.DLL** file, **NILBUILD** will not be able to determine the number of icons contained in the library. You must, therefore, **count** the number of desired icons. The best way to do this is to load the file into the **Norton Viewer** and select "**Windows Icons**" as the current view. The icons will be displayed in rows of 8 for easy counting.
- 2) Prepare a target directory.
- 3) Launch **NILBUILD**. Select the appropriate option "**B**", "**C**", or "**D**" from the prompt mode menu.
- 4) Choose the source library from the listbox.
- 5) Choose the target directory from the listbox.
- 6) From step **one**, enter the number of icons to export. If your source library is an **.NIL** file, the total number of icons in the library will appear as the default. Otherwise, the default will be **zero**, and you must enter a number. If the specified number is greater than the total number of icons contained in the library, the **last** icon will be duplicated over and over again until the specified quantity is reached.
- 7) The **export** process will commence. Hold the **CONTROL-key** down for several seconds if you wish to abort. **Reports** are not generated for export operations.



Yes, it's a dumb logo. But what do you expect from **freeware**?

A **source directory** is a directory containing **.ICO** files that the user wants to **import** into a target library. To satisfy memory constraints, it is recommended that the source directory contain no more than **450** icons.

A **target library** is an **.NIL** file that the user wishes to **import** icons into. The icons may be selected from a drive window or placed in a specially prepared source directory.

A **source library** is an **.NIL**, **.EXE**, or **.DLL** file that the user wishes to **export** icons from. The icons must be sent to a pre-selected target directory.

A **target directory** is a directory designated to receive **.ICO** files **exported** from a source library. The directory must not contain any filenames of the form **ICON???.ICO** or an error message will be issued. For best results, it is recommended that the target directory be **empty**.

# Modes of Operation

There are 3 modes of **NILBUILD** operation:

## 1) Drag & Drop Mode

Files may be selected from any drive window and then passed to **NILBUILD** as parameters by dragging them from the window and dropping them onto the **NILBUILD** icon. (See the **Norton Desktop User's Guide**, page 6-6.) Up to 9 files may be dropped in this manner. However, the total combined length of the dropped filenames may not exceed the length of the **DOS** command line, which is 127 characters. If this limit is exceeded, **Norton Desktop** will issue a warning message explaining that the command line has been truncated. If you say OK, the launch will proceed normally, but some of the dropped files will **not** be passed as parameters. To solve this problem, use the **file select** mode explained below. For more information on using **drag & drop**, see [Advanced Mode Procedures](#).

## 2) File Select Mode

If you have **BATCHRUN.EXE** in your [Norton Desktop directory](#), you can use the far easier **file select** method to pass an almost unlimited number of filenames to **NILBUILD**. First, **select** and **highlight** all the desired files in the drive window as if you were going to use the **drag & drop** method. However, instead of dragging the files over to the **NILBUILD** icon, hold down the **CONTROL-key** and double-click on the icon with the desired files left highlighted in the window. Hold the **CONTROL-key** down for several seconds while **NILBUILD** launches. The filenames will automatically be fetched. For more information on using **file select** mode, see [Advanced Mode Procedures](#).

**Note:** If **BATCHRUN.EXE** is not found, you will hear a [beep](#) whenever you attempt to use **file select mode**. When this happens, **NILBUILD** automatically switches to prompt mode.

## 3) Prompt Mode

Prompt mode is the default mode for **NILBUILD** and will activate whenever there are no files **selected** or **dropped**. To run prompt mode, simply double click on the **NILBUILD** icon. You will be presented with the prompt mode menu and prompted for all necessary information. You may perform any **NILBUILD** function using **prompt mode**. See [Prompt Mode Procedures](#) for more information.

### Notes:

- If a single **.NIL** file is selected or dropped, the user is asked if he wants to import **to**, or export **from** the selected file.
- If a single **.EXE** or **.DLL** file is selected or dropped, an **export** operation is assumed and the user is prompted for a [target directory](#).
- If a single **.ICO** file is selected, an **import** operation is assumed and the user is prompted for a [target library](#).
- If more than one file is selected or dropped, it is assumed that all the files are **.ICO** files. An **import** operation is performed and the user is asked to specify a [target library](#).

## Advanced Mode Procedures

This section describes the use of NILBUILD's **drag & drop** and **file select** techniques. Please read the section on modes of operation if you haven't already done so.

### Important!!

**NILBUILD** will not run if the **Norton Icon Editor** is already open. You must close the editor prior to running **NILBUILD** or fatal Error 101 will result.

## A) Importing Icons

### Method I

- 1) Select the appropriate number of **.ICO** files and launch **NILBUILD** using either the **drag & drop** or **file select** method outlined in the modes of operation section.
- 2) Choose a target library from the listbox.. If you specify a non-existent library, you will be given the option of creating it.
- 3) If you have NFIXICO installed correctly, **NILBUILD** will give you the option of **FIX**ing the icons you have selected. Unless the icons have already been fixed, it is recommended that you answer in the affirmative.
- 4) The import process will commence. You must hold down the **CONTROL-key** for several seconds if you wish to **abort**. A report will be generated when the process terminates.

### Method II

- 1) **Drag & drop** the target .NIL library onto the **NILBUILD** icon using the method outlined in the modes of operation section.
- 2) Choose option "**A**" from the startup menu.
- 3) Follow procedure "**A**" outlined in Prompt Mode Procedures. Start with step **4**.

## B) Exporting Icons

- 1) Determine how many icons you want to export. If your source library is an **.NIL** file, **NILBUILD** will export **ALL** the icons in the file by default. However, if your source is an **.EXE** or a **.DLL** file, **NILBUILD** will not be able to determine the number of icons contained in the library. You must, therefore, **count** the number of desired icons. The best way to do this is to load the file into the **Norton Viewer** and select "**Windows Icons**" as the current view. The icons will then be displayed in rows of 8 for easy counting.
- 2) Prepare a target directory.
- 3) Drag & drop the source library onto the **NILBUILD** icon using the method outlined in Modes of Operation. If the source is an **.NIL** file, choose option "**B**" from the menu. If the source is an **.EXE** or **.DLL** file, an export operation is assumed and there will be no menu.
- 4) Choose the target directory from the listbox.
- 5) From **step one**, enter the number of icons to export. If your source library is an **.NIL** file, the total number of icons in the library will appear as the default. Otherwise, the default will be **zero**, and you must enter a number. If the specified number is greater than the total number of icons contained in the library, the **last** icon will be duplicated over and over again until the specified quantity is reached.
- 6) The **export** process will commence. Hold the **CONTROL-key** down for several seconds if you wish to **abort**. **Reports** are not generated for export operations.

## Error Messages

### Beep

If you attempt to use the file select feature and you hear a "beep" during startup, it means that NILBUILD could not find the **BATCHRUN.EXE** file in the NDW directory. **BATCHRUN** is necessary for NILBUILD to obtain the highlighted filenames from the drive window. NILBUILD switches to prompt mode when this error occurs. See Modes of Operation.

### Error 101

NILBUILD works by "taking control" of the **Norton Icon Editor**. Since the editor does not allow two versions of itself to run simultaneously, NILBUILD would have to take control of an existing window if the editor were already running. Since this could result in data loss, NILBUILD is designed to launch and take control of a "fresh" copy of the editor.

### Error 102

The main **Windows** directory must contain the **NDW.INI** file which, in turn, must contain the entry "**NDWDir=**" in the **Configuration** section. Otherwise, NILBUILD will not be able to determine the name of the Norton Desktop directory and **Error 102** will result.

### Error 103

NILBUILD is designed to work with the **Norton Icon Editor** and will produce this error message if **ICONEDIT.EXE** is not found in the Norton Desktop directory. See System Requirements.

### Error 104

This message will result if the NILBUILD subroutine file, **NILBUILD.SUB** is not found in the Norton Desktop directory. See Installation.

### Error 105

This message will result if NILBUILD cannot locate a **dropped** or **selected** file. If this happens, try **REFRESH**ing the drive window to make sure the files you want are still there.

### Error 106

During drag & drop or file select operation, **Error 106** will occur if:

- 1) only a single file is selected, **and**
- 2) the file is neither type **.NIL**, **.DLL**, **.EXE** nor **.ICO**

See Modes of Operation.

### Error 107

This error will occur when the **Norton Icon Editor** cannot write an **.ICO** file to disk. This will occur if the current directory is invalid or if the directory already contains a file of the same name. Hardware, FAT, or directory problems can produce this error as well.

### Error 200

The main program, **NILBUILD.EXE**, is a different version from the subroutine file, **NILBUILD.SUB**. This can only happen if NILBUILD is updated to a **newer** version and the older files are not deleted.

### Error 201

This error occurs when NILBUILD tells the **Norton Icon Editor** to load an **.NIL**, **.EXE** or **.DLL** file and the editor reports an error afterward. This will occur if:



- 1) the file is type **.EXE** or **.DLL** (not **.NIL**) and contains no icons.
- 2) there are not enough GDI resources to load the file.
- 3) the file is corrupt.
- 4) the file somehow confuses the editor into coming up in the wrong **MODE**. (see below)

Some **.EXE** and **.DLL** files, such as **DESKEDIT.EXE**, "trick" the icon editor into coming up in **LIB** mode instead of in **EXE** mode. (See the Norton Desktop User's Guide, page 19-13.) This is due to an undocumented feature of the editor.

### **Error 202**

If the **Norton Icon Editor** reports an error while trying to write a new **.NIL** file to disk, **Error 202** will result. This can be caused by an invalid pathname, or hardware or FAT problems. On rare occasions, this can be caused by too few GDI resources. If this happens, try deleting just a few icons from the library before saving it.

## Reports

A **report** is copied to the Windows clipboard at the end of every **import** operation. The clipboard viewer is started up automatically for the user's convenience. The report can be **pasted** into a document with any editor and then **saved** for future reference. A typical report may look like this:

NILBUILD vers 2.03 Beta  
Copyright (C) 1993 by Monarch Software

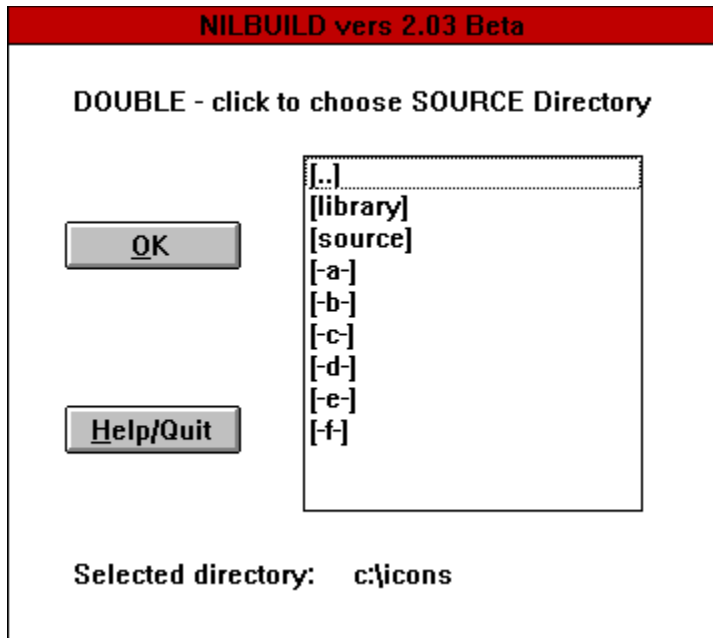
Import process is COMPLETE.  
Status report for TARGET library "c:\test.nil" follows:

Successfully imported 60 icons from "cad.ico" to "cave.ico".  
There were NO corrupt or unreadable icons.

System GDI resources currently at 65 percent.  
The Norton Icon Editor has been left open. You may make any  
necessary changes before SAVING the library and CLOSING the editor.  
\*\*\*\*\* END OF REPORT \*\*\*\*\*

### Notes:

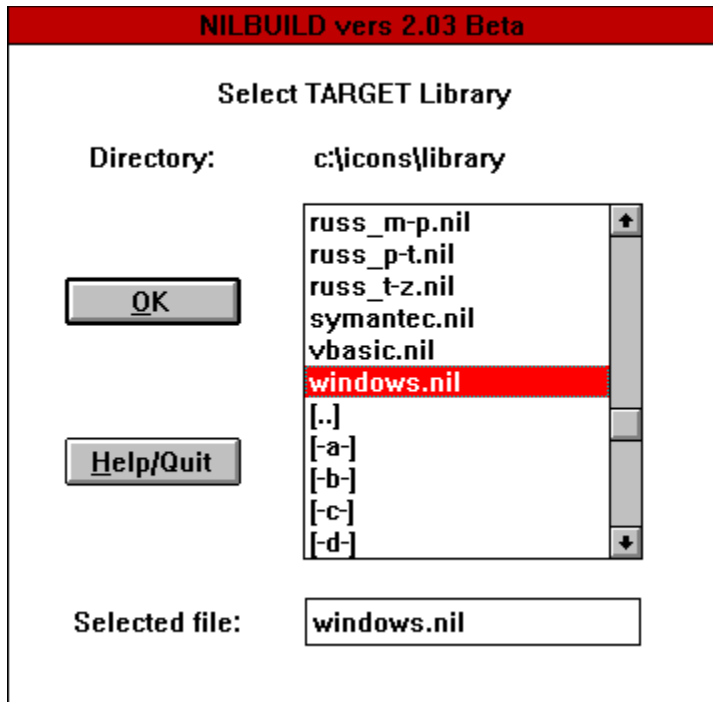
- The report states whether the import process **completed** or was **interrupted**. The process can only be **interrupted** if the user presses the **CONTROL** key or if Windows **GDI** resources fall below **12 percent** of maximum.
- The number of successfully imported icons as well as the **first** and **last** (alphabetically) successfully imported filenames are displayed.
- If all the specified **.ICOs** were successfully imported, **NILBUILD** will state that there were **no** unreadable icons. Otherwise, an alphabetical list of unreadable **.ICO** files is produced. If **NFIXICO** is not on the system, **NILBUILD** will recommend that it be installed.
- The report will give the percentage of Windows **GDI** resources remaining at the end of the import process. **G.D.I.** stands for "**Graphics Device Interface**" and can be loosely thought of as an area of memory where **Windows** stores graphics images. The size of this memory area is unrelated to system memory size. As the **Norton Icon Editor** imports icons, **GDI** memory is consumed very rapidly. **NILBUILD** interrupts the import process when **89 percent** of the available resource is consumed. This allows for about **450** imported icons on most systems while leaving room for a few miscellaneous operations. If you find that you cannot import at least **400** icons, refer to the [troubleshooting](#) section.
- At the end of the report, **NILBUILD** offers a gentle reminder that it is up to the user to **SAVE** the imported icons to disk. **NILBUILD** does **NOT** close the icon editor.



## Directory Listbox

This box is used to select target and source directories. It differs slightly from the standard Windows listbox in that only drives and subdirectories are displayed. **Double**-click on any drive or subdirectory to display it. Click the **OK** button to select it. You cannot enter the directory name with the keyboard.

For more information, click on any listbox control above.



## File Listbox

This listbox is used to select source and target libraries. It is similar to the standard Windows dialog box. To select a file, click once on the filename or type it in the editbox at the bottom. Click the **OK** button to complete the selection. To view a different directory, **double-click** on any of the directory names encased in square brackets, "[ ]". The symbol, "[..]", represents the parent directory.

For further information, click on any of the listbox controls above.

## The Norton Desktop Directory

is usually named "**c:\ndw**". However, the directory can be given a different name during **NDW** installation. If you do not know the name of your **NDW** directory, view the contents of the **NDW.INI** file located in the main **WINDOWS** directory. The directory name should be defined in the **Configuration** section of the file as shown below:

### [Configuration]

Save=TRUE

NDWErrorCode=0

NDWVersionMajor=2

**NDWDir=?????**

NDWVersionMinor=0

**Note:** Error 102 will result if the **NDW** directory is not defined in this manner.

## Troubleshooting

Here is a list of common problems and their solutions. For help with specific errors, refer to the [error messages](#) section.

### **NILBUILD does not import the icons that I specify.**

One way around this problem is to prepare your [source directory](#) so that it contains only the **.ICO** files you want to import. Use the **Norton** file manager to prepare the directory and to double-check its contents. Use the default wildcard, **\***, to select all the files in the source directory. If you must use specific [wildcards](#), familiarize yourself with their operation by reading the appropriate section in the **DOS** manual. Remember that **NILBUILD** accepts up to **nine** wildcards separated by **spaces**.

### **I can't get the "File Select" mode to operate.**

You must have the file **BATCHRUN.EXE** in your [NDW directory](#) in order for [file select](#) to operate. If the file is missing, you will hear a [beep](#). Another reason may be that you aren't holding the **control key** down long enough when you launch **NILBUILD**. When **NILBUILD** launches, you will see the icon appear momentarily at the bottom left-hand corner of the screen. You should wait until the icon has disappeared before you take your finger off the key. By that time, **NILBUILD** has already checked the status of the keyboard. In fact, it is not recommended that you hold the key down any longer. My experience has been that the keyboard buffer can overflow if the key is held down for too long a time. This can cause some unpredictable problems.

### **I get an error message when I try to use "Drag & Drop".**

**Norton Desktop** passes its [drag & drop](#) parameters through the **DOS** command line, which is limited to **128** characters. Therefore, **drag & drop** is only good for a few filenames. Use [file select](#) mode for 5 or more files.

### **"Drag & Drop" and "File Select" don't work at all.**

You must have **Norton Desktop** specified as your shell. **Program Manager** does not support these features. See [System Requirements](#).

### **I can't get NILBUILD to stop!!**

Sometimes it takes **NILBUILD** several seconds to respond. Just hold down the **control key** until things come to a halt. The **control key** on your keyboard may also be faulty. See [Prompt Mode Procedures](#).

### **NILBUILD runs out of GDI resources before importing the 400th icon.**

Remember that the number **400** refers to the approximate **maximum** number of icons that can be loaded into the icon editor at one time. Therefore, this amount refers to the number of imported icons **plus** the number of icons already in the library. This is assuming, of course, that no other active applications are using **GDI** resources. To be on the safe side, **close** all other apps before doing a large import. Next, check the availability of system resources by selecting **"About.."** from the Norton Desktop **Help** menu. The percentage of remaining system resources will appear at the bottom of the window and should be at least **70**. See [Reports](#).

### **When I export from an .EXE or an .DLL file, NILBUILD counts zero icons in the library.**

This is because **NILBUILD** cannot count icons in an **.EXE** or **.DLL** library. You must count them yourself using the **Norton Viewer**. See the **"Exporting Icons"** section of either

Prompt Mode Procedures or Advanced Mode Procedures.

**NILBUILD doesn't present a report after EXPORT operations.**

**NILBUILD** presents reports only after **IMPORT** operations. If there are any errors during an **EXPORT** operation, **NILBUILD** will either refuse to begin the operation or terminate with an error message.

**Wild Cards** are exactly like the ones used in **DOS** to specify more than one filename. However, the extension **.ICO** is **always** used, regardless of which extension is actually specified. For example, the following line selects all icons beginning with the letters **A-D**.

**a\*.ico b\*. c\*.bak d\***

Remember: **NILBUILD** allows up to **9** wildcards per import. For more information on wildcards, please refer to your **DOS** manual.



This is the name of the file selected by the **OK** button. You may type the desired filename into this editbox or select it from the listbox above. You may also type a **wildcard** into this box to change the type of file displayed.

This is a listing of the directory whose name appears directly above. Only subdirectories and files of the type specified in the editbox (below) are displayed. Subdirectories are encased in square brackets, [ ]. To change the directory, **double**-click on any subdirectory or drive name presented in the listbox. The parent directory is displayed as "[..]". Drives are displayed as "[-a-],[-b-]" etc.

The contents of this directory is displayed in the listbox below.

This button gives you the option of reading the **HELP** file or of **QUITTING** the program.

This button **SELECTS** the file displayed in the edit box at the bottom.

This directory is displayed in the listbox above and is selected by the **OK** button.

This is a listing of the directory whose name appears directly below. Only subdirectories are displayed and are encased in brackets, "[ ]". To change the directory, **double**-click on any subdirectory or drive name presented in the listbox. The parent directory is displayed as "[..]". Drives are displayed as "[-a-],[-b-]" etc.

This button **selects** the directory whose name appears at the bottom.



