

## CONTENTS

This package contains 5 programs:

- PRTSC.exe -- Prints the current screen contents
- PRTCLIP.exe -- Prints the current contents of the clipboard, either graphic or text
  
- PPRINT.exe -- Iconized program which executes PRTSC for "hotkey" screen prints
- PCLIP.exe -- Iconized program which executes PRTCLIP for "hotkey" clipboard prints
  
- PORTLAND.exe -- Iconized program which sets default printer orientation alternately to Portrait and Landscape mode.

If this package does not contain VBRUN300.DLL, you'll need to get it. It's Microsoft's free Visual Basic Runtime module, and is available on most Bulletin Boards.

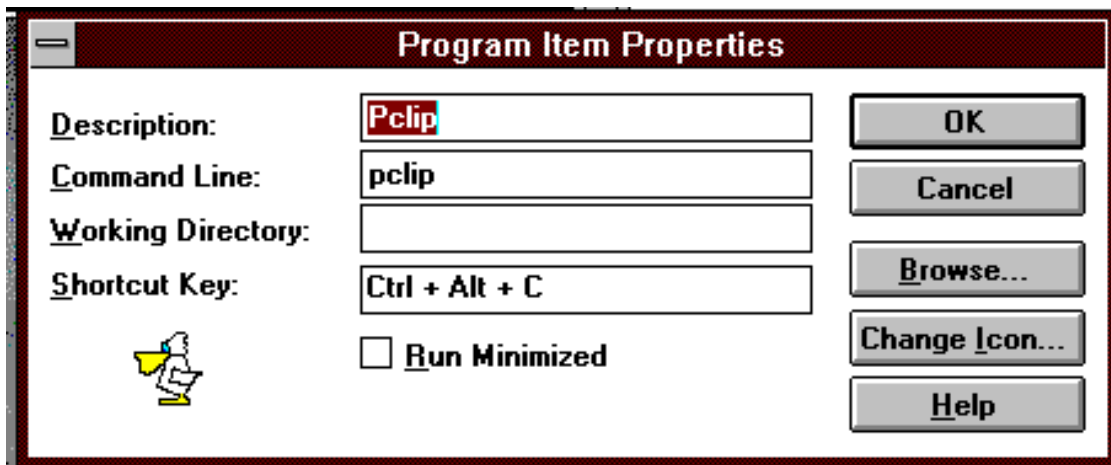
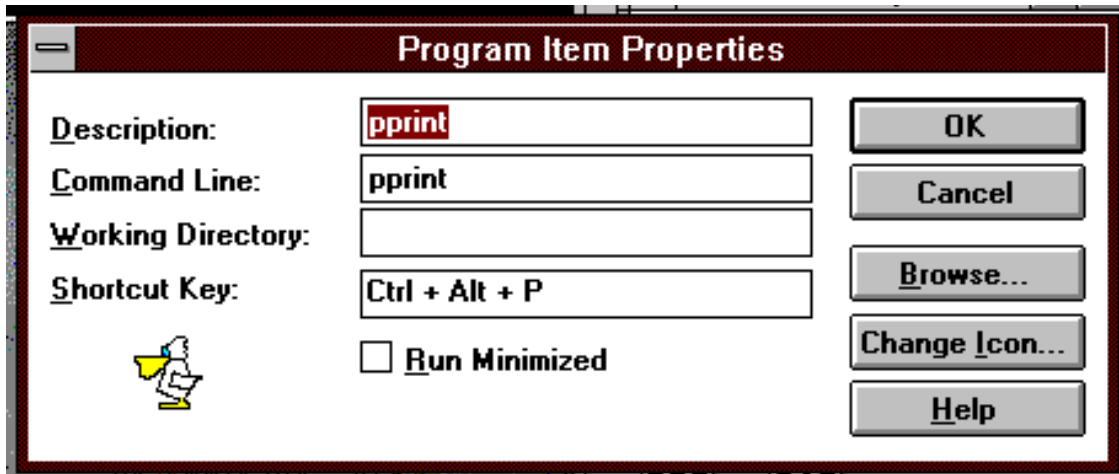
The 5 programs must be located in your WINDOWS directory or a directory in your path. The DLL should be placed in your WINDOWS\SYSTEM directory.

## SETUP

PRTSC or PRTCLIP can be executed from within any program capable of making Windows API calls or in any other way launching a Windows program. Their only output is to the printer, via Windows, thus printing according to your current Windows' printer setup...displaying a temporary "PRINTING" box...leaving the clipboard and screen as they found them. Since PRTSC is expected to be executed by a call from another program, no other setup is required for it.

PRTCLIP can be set up in any Windows group for execution via double-click. It executes, then goes away.

PPRINT and PCLIP are intended to be placed in your Windows STARTUP group. They then load as icons when Windows starts up. When activated after that, PPRINT executes PRTSC and stays iconized; likewise PCLIP executes PRTCLIP. Most people, tho, prefer that PPRINT and PCLIP be activated with a "hotkey" rather than double clicking. That way, printing the clipboard or screen is as easy as is the DOS PRTSC key. Simply set up PPRINT and PCLIP in the STARTUP group with a Program Manager "Shortcut Key". I recommend Alt-Ctrl-P for PPRINT (P for prtsc) and Alt-Ctrl-C for PCLIP (C for clipboard). Windows forces shortcut keys to be Alt-Ctrl combinations; you just type the letter in the "properties" dialog:



Then, anytime you want a screen print, simply hit ALT-CTRL-P. And ALT-CTRL-C anytime will print the clipboard, no matter what it contains.

PORTLAND is also intended to be placed in your windows STARTUP group, similarly to PCLIP and PPRINT above. I suggest Ctrl + Alt + O [for Orientation] as the hotkey. A red letter in the icon indicates the current default printer's orientation. The icon will always reflect this orientation, as long as the orientation setting program follows Windows conventions for printer event notification. Double-clicking the icon will change the orientation, as will keying the hotkey combination.

#### DISCLAIMER

These programs have been well used. I expect they'll perform reliably and well for you. But I make no guarantees as your mileage may vary.

#### THE PITCH

These programs are shareware. You are free to try them out for a period of 30 days. If you should find these programs useful and use them beyond that trial period, you are obligated to

send \$10 to:

Paul Poellinger  
2019 Round Lake Drive  
Houston, TX 77077

If you paid for the diskette or CD these programs were on, you still must pay the \$10 for legal use past the free 30 day trial.

I'll let you know of any problems/fixes and future tools.

**FINALLY**

Drop me a note if you find any problems, have any ideas for improvement, or you just want some email...at the above address or on Compuserve (70732,3576).