

## Contents

DDP (Drag & Drop Printer) is a utility to print ASCII text files. DDP allows you to drag file on top of it's icon and then it will print the file.

To learn how to use Help press F1

[What's New in Version 2.0?](#)

### **How To...**

[Print Files](#)

[Change Fonts](#)

[Set up Margins, Headings & Footings](#)

[Set up the Printer](#)

[Set up Preferences](#)

### **Legal Information**

[Copyright](#)

[Warranty](#)

[License](#)

[Shareware Concept](#)

### **Order Information**

[Registration Benefits](#)

[Upgrades](#)

[Order By Mail](#)

[Order by Credit Card](#)

[Order by CompuServe Email to FLFSOft](#)

[Authorized International Distributors](#)

### **Company Information**

[Contacting FLFSOft, Inc.](#)

## Contacting FLFSoft, Inc.

For technical assistance, order, site licenses, upgrades or general information, you may contact us at:

Address: FLFSoft, Inc.  
PO. Box 306  
Oak Creek, WI 53154-0306

CompuServe: 75010,237  
Internet: 75010,237.@compuserve.com

## **Printing Files**

To print files with DDP, just drag the file from the file manager (or any application which allows files to be dragged) on top of the DDP icon. DDP will then print the file to the currently selected printer.

## Setting Fonts

You can use the Fonts menu option to display the Fonts dialog. The Fonts dialog allows you to modify the Font, Font Style and Font Size for the entire document. These changes only apply to the documents being printed, they do not actually modify the file contents.

To change the Font, Font Style or Font Size using the Fonts Dialog

- 1 In the Font box, type or select a Font Name.
- 2 In the Font Style box, type or select a style for the text.
- 3 In the Size box, type or select a font size.
- 4 Choose the OK button.

## Page Setup

The Page Setup dialog allows you to set the Headings and Footings, the Top, Bottom, Left and Right margins for printing.

To add Headings or Footings

1 Enter the desired text in the Heading or Footing box.

2 Select the Check Box to the right of the Heading or Footing box to select the text to be printed. If the Heading or Footing Check Box is not selected, the Heading or Footing text will not be printed.

The following special characters may be used in the Headings or Footings:

%d	Current date
%t	Current time
%f	Full file name, including path
%p	Current page number

The Vertical Bar character separates the headings and footings into text to be left justified, centered and right justified. Any text to the left of the first Vertical Bar will be left justified. Any text to the right of the first Vertical Bar will be Centered. Any text to the right of a second Vertical Bar will be right justified. The Vertical Bar must be separated by at least one space.

For example:

Left justified text | Centered text | Right justified text

will print

Left Justified text

Centered text

Right justified text

## Heading

A Heading is a line printed at the top of each page.

## Footing

A Footing is a line printed at the bottom of each page.

Vertical Bar

A Vertical Bar is the character '|'.



## Printer Setup

The Printer Setup dialog allows you to select a printer (other than the default), change paper orientation, size and source. The Options... button will allow you to further configure your printer. The options available on Options... depends on the specific printer.

To modify the printer click on either the Default Printer or on the Specific Printer. If you select Specific Printer, a list of your installed printers will be displayed. Select one from the list.

To modify the paper orientation select either Landscape or Portrait.

To modify the Paper Size or Source click on the appropriate box. A list of the available sizes or source will be displayed. Select one from the list.

Landscape



Portrait



## Order by Mail



[Click here to print the order form](#)

Name: \_\_\_\_\_

Address: \_\_\_\_\_

City: \_\_\_\_\_ State: \_\_\_\_\_ Zip: \_\_\_\_\_

Country: \_\_\_\_\_ Telephone: \_\_\_\_\_

Circle Disk Size:      5 1/4"   3 1/2"      Circle Graphics:    EGA   VGA   SVGA

Circle Computer Type: 286   386   486   Other

Drag and Drop Printing v2.0                      \$15.00 (US) x \_\_\_\_ Units = \$ \_\_\_\_\_  
Upgrade from Drag and Drop Printing v1.0      \$5.00 (US) x \_\_\_\_ Units                      = \$ \_\_\_\_\_

U.S. shipping and handling                      \$1.50 (US)                                      = \$ \_\_\_\_\_  
Canadian Shipping                                      \$2.00 (US)                                      = \$ \_\_\_\_\_

Overseas shipping and handling                      \$5.00 (US)                                      = \$ \_\_\_\_\_

Total                      \$ \_\_\_\_\_

Mail to: FLFSoft, Inc.  
          PO. Box 306  
          Oak Creek, WI 53154-0306

Make checks payable to "FLFSOFT, INC.". We will attempt to ship all orders within 24 hours.

Where did you obtain this copy of Drag and Drop Printing?

---

---

Please pass along any comments or suggestions about Drag and Drop Printing.

---

---

---

Thank you for your comments!

FLFSoft, Inc.

## Order by Credit Card

You can register Drag and Drop Printing with Master Card, Visa, American Express, or Discover card from Public (software) Library by calling PsL at one of the following numbers 800-242-PsL or 713-524-6394 or by FAX at 713-524-6398 or by CIS Email at 71355,470. You can also mail credit card orders to Psl at:

Public (software) Library  
P.O. Box 35705  
Houston, TX 77235-5705

Drag and Drop Printing is product number 11178.

"THE ABOVE NUMBERS ARE FOR CREDIT CARD ORDERS ONLY"

Registrations are taken by PsL as a convenience to FLFSOFT, Inc. customers. Any questions about the status of shipment of the order, refunds, registrations options, product details, technical support, volume discounts, dealer pricing, site licenses, etc, must be directed to FLFSOFT, Inc.

To insure that you get the latest version, PsL will notify FLFSOFT the day of your order and we will ship Drag and Drop Printing directly to you.

Also see

[Contacting FLFSOFT, Inc.](#)

[Order by Mail](#)

[Order by CIS Email](#)

## **Order by CompuServe Email to FLFSoft, Inc.**

You may register your copy of Drag and Drop Printing by sending an Email to FLFSoft, Inc. We will ship you a registered copy of the program and bill you.

Also see

[Contacting FLFSoft, Inc.](#)

To move an item on the screen by selecting the item and then pressing and holding down the mouse button while moving the mouse.



## **Disclaimer Of Warranty**

### **TRIAL USE (SHAREWARE EVALUATION VERSION) WARRANTY:**

The Shareware evaluation (trial use) version is provided AS IS. FLFSOFT, Inc. MAKES NO WARRANTY OF ANY KIND, EXPRESSED OR IMPLIED, INCLUDING WITHOUT LIMITATION, ANY WARRANTIES OF MERCHANTABILITY AND/OR FITNESS FOR A PARTICULAR PURPOSE.

### **REGISTERED VERSION ONLY WARRANTY:**

FLFSOFT, Inc. warrants the physical diskette(s) and physical documentation provided with registered versions to be free of defects in materials and workmanship for a period of ninety days from the date of registration. If FLFSOFT, Inc. receives notification within the warranty period of defects in materials or workmanship, and such notification is determined by FLFSOFT, Inc. to be correct, FLFSOFT, Inc. will replace the defective diskette(s) or documentation.

The entire and exclusive liability and remedy for breach of this Limited Warranty shall be limited to replacement of defective diskette(s) or documentation and shall not include or extend to any claim for or right to recover any other damages, including but not limited to, loss of profit, data, or use of the software, or special, incidental, or consequential damages or other similar claims, even if FLFSOFT, Inc. has been specifically advised of the possibility of such damages. In no event will FLFSOFT, Inc. liability for any damages to you or any other person ever exceed the lower of suggested list price or actual price paid for the license to use the software, regardless of any form of the claim.

FLFSOFT, Inc. SPECIFICALLY DISCLAIMS ALL OTHER WARRANTIES, EXPRESS OR IMPLIED, INCLUDING BUT NOT LIMITED TO, ANY IMPLIED WARRANTY OF MERCHANTABILITY AND/OR FITNESS FOR A PARTICULAR PURPOSE.

## **Copyright Notice**

Copyright (c) 1993-1994 FLFSOFT, INC. All Rights Reserved

No part of this publication may be copied without the express written permission of

FLFSOFT, INC.,  
PO. Box  
306 Oak Creek, WI 53154-0306

## Definition of Shareware

Shareware distribution gives users a chance to try software before buying it. If you try a Shareware program and continue using it, you are expected to register. Individual programs differ on details -- some request registration while others require it, some specify a maximum trial period. With registration, you get anything from the simple right to continue using the software to an updated program with a printed manual.

Copyright laws apply to both Shareware and commercial software, and the copyright holder retains all rights, with a few specific exceptions as stated below. Shareware authors are accomplished programmers, just like commercial authors, and the programs are of comparable quality. (In both cases, there are good programs and bad ones!) The main difference is in the method of distribution. The author specifically grants the right to copy and distribute the software, either to all and sundry or to a specific group. For example, some authors require written permission before a commercial disk vendor may copy their Shareware.

Shareware is a distribution method, not a type of software. You should find software that suits your needs and pocketbook, whether it's commercial or Shareware. The Shareware system makes fitting your needs easier, because you can try before you buy. And because the overhead is low, prices are low also. Shareware has the ultimate money-back guarantee -- if you don't use the product, you don't pay for it.

(This section written by Paul Mayer, the author of GRAB Plus, and provided courtesy of the Association of Shareware Professionals.)

## LICENSE

This section contains important license information regarding the use of Drag and Drop Printing, Version 2.00. This information applies to individual users who wish to pass copies out to friends and associates.

User Groups, Computer Clubs, Disk Vendors and Distributors, Subscription Services, Disk-of-the-Month Clubs, etc., should refer to the VENDOR.DOC file on the distribution disk for complete information relating to them.

BBS SYSOPs should refer to the SYSOP.DOC file on the distribution disk for complete information relating to them.

PLEASE! Show your support for Shareware by registering the programs you actually use. FLFSOFT, Inc. depends upon and needs your support. Thank you!

### **Trial Use License:**

Drag and Drop Printing is NOT a public domain program. It is Copyright (c) 1993-1994 by FLFSOFT, Inc. All rights reserved.

This software and accompanying documentation are protected by United States Copyright law and also by International Treaty provisions. Any use of this software in violation of Copyright law or the terms of this limited license will be prosecuted to the best of our ability. The conditions under which you may copy this software and documentation are clearly outlined below under "Distribution Restrictions".

FLFSOFT, Inc. hereby grants you a limited license to use this software for evaluation purposes for a period not to exceed sixty (60) days. If you intend to continue using this software (and/or it's documentation) after the sixty (60) day evaluation period, you MUST make a registration payment to FLFSOFT, Inc.

Using this software after the sixty (60) day evaluation period, without registering the software is a violation of the terms of this limited license.

Licensee shall not use, copy, rent, lease, sell, modify, decompile, disassemble, otherwise reverse engineer, or transfer the licensed program except as provided in this agreement. Any such unauthorized use shall result in immediate and automatic termination of this license. All rights not expressly granted here are reserved to FLFSOFT, Inc.

### **Limited Distribution License:**

As the copyright holder for Drag and Drop Printing, FLFSOFT, Inc. authorizes distribution by individuals only in accordance with the following restrictions.

(User Groups, Computer Clubs, Disk Vendors and Distributors, Subscription Services, Disk-of-the-Month Clubs, etc., should refer to the VENDOR.DOC file on the distribution disk for complete information relating to them.)

(BBS SYSOPs should refer to the SYSOP.DOC file on the distribution disk for complete information relating to them.)

Individuals are hereby granted permission by FLFSOFT, Inc. to copy the Drag and Drop Printing diskette for their own use (for evaluation purposes) or for other individuals to evaluate, ONLY when the following conditions are met.

The Drag and Drop Printing package is defined as containing all the material listed in the PACKING.LST

text file. If any files listed in the PACKING.LST text file, or the PACKING.LST file itself, are missing, then the package is not complete and distribution is forbidden. Please contact us to obtain a complete package suitable for distribution.

- o The Drag and Drop Printing package - including all related program files and documentation files - CANNOT be modified in any way and must be distributed as a complete package, without exception. The PACKING.LST text file contains a list of all files that are part of the Drag and Drop Printing package.

- o No price or other compensation may be charged for the Drag and Drop Printing package. A distribution cost may be charged for the cost of the diskette, shipping and handling, as long as the total (per disk) does not exceed US\$8.00 in the U.S. and Canada, or US\$12.00 internationally.

- o The Drag and Drop Printing package CANNOT be sold as part of some other inclusive package. Nor can it be included in any commercial software packaging offer, without a written agreement from FLFSOFT, Inc.

- o The PRINTED User's Guide may not be reproduced in whole or in part, using any means, without the written permission of FLFSOFT, Inc. In other words, the disk-based documentation may not be distributed in PRINTED (hardcopy) form.

- o The Drag and Drop Printing package cannot be "rented" or "leased" to others.

- o Licensee shall not use, copy, rent, lease, sell, modify, decompile, disassemble, otherwise reverse engineer, or transfer the licensed program except as provided in this agreement. Any such unauthorized use shall result in immediate and automatic termination of this license.

- o U.S. Government Information: Use, duplication, or disclosure by the U.S. Government of the computer software and documentation in this package shall be subject to the restricted rights applicable to commercial computer software as set forth in subdivision (b)(3)(ii) of the Rights in Technical Data and Computer Software clause at 252.227-7013 (DFARS 52.227-7013). The Contractor/manufacturer is FLFSOFT, Inc., P.O. Box 306 Oak Creek, Wisconsin, 53154-0306. All rights not expressly granted here are reserved to FLFSOFT, Inc.

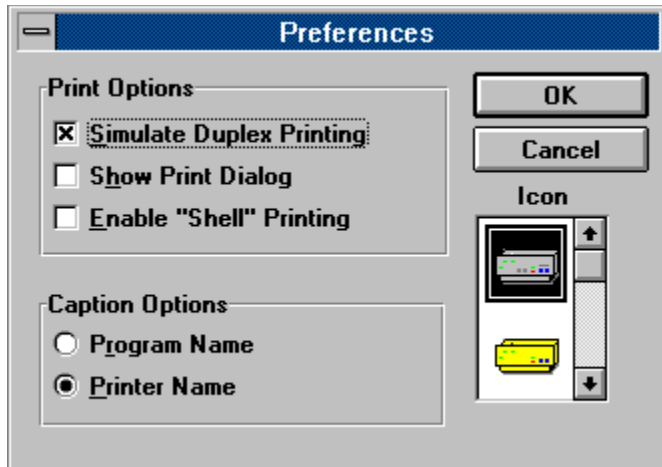
## Upgrade

Upgrades from Drag and Drop Printing are available for \$5.00 + shipping and handling to registered customers of Drag and Drop Printing. If you registered Drag and Drop Printing v1.0 after 01NOV93, you will receive a free upgrade.

also see  
[Order Form](#)

## Preferences

You can use the Preferences menu option to select several parameters for the program. Use the mouse to select items from the dialog below or from the list below.



### Printing Options

Simulate Duplex Printing

Shell Printing

Show Print Dialog

### General Options

Set Program Icon

Set Program Description

## What's New in Version 2.0?



Handle any size file



Ability to select and drop multiple files



All Controls now 3D



Setup Dialog renamed to Page Setup Dialog



Spin buttons added to Page Setup Dialog



Added Preferences:

[Allowing 'Shell' Printing](#)

[Simulated Duplex Printing](#)

[Customization of Program Description](#)

[Customization of Program Icon](#)



Enhanced Installation



Removed Unnecessary Items from DDP Main Menu

For a complete list of improvements see the file `WHATS.NEW`.



## Registration Benefits

When you register your copy of Drag and Drop Printing you will receive the following benefits:

- A professionally printed copy of the manual
- Three (3) months support for the product
- Notification of future releases / bug fixes
- An introductory membership to CompuServe and a \$15 usage credit
- A subscription to Shareware Magazine for \$14.95
- A certificate that will allow you to purchase the JCSM shareware CD at one half the normal price.

For complete information on registration benefits, please see the file `BENEFITS.TXT` in the directory that you installed Drag and Drop Printing.

## Simulated Duplex Printing

Duplex printing allows you to save paper by printing on both sides of the paper. Simulated duplex printing allows you to do duplex printing on printers that do not internally support duplex printing.

### Duplex Printers

If you have a printer that internally supports duplex printing you must change the duplex printing option from the Printer Setup option. From the Printer Setup dialog box, choose the Options button. In the Duplex Printing group box, select the option you want to use. Choose the OK button and print as normal.

### Simplex Printers

Drag and Drop Printing implements duplex printing by first printing the odd pages, pausing to allow you to re-insert the pages and then printing the even pages. After the odd pages are printed a dialog will appear requesting you to re-insert the pages in the printer.

When the dialog appears you will need to re-order the paper and put it back into the printer. Depending on how your printer feeds paper you will have to turn the paper over and/or re-order the sheets of paper.

Experiment with duplex printing with a small file until you determine the correct method to put the pages back in the printer.

**Note:** Some printer manufactures recommend that you do not print on both sides of the paper. Please refer to your printer manual for more details.

Duplex printing is to print on both sides of the paper.

## Shell Printing

"Shell" printing allows you to print files created with your favorite programs to be printed easily by just dropping the file on top of the Drag and Drop Printing icon. This process of "Shell" printing is implemented in two phases. The first phase is when you install applications in Windows. As an option, applications may add information to a special Windows file call the "REGISTRATION DATABASE". The second phase is when you use the File Manager Associate command to associate a file extension with a program. Once this association is completed, Drag and Drop Printing can retrieve information about the application that is associated with the file and determine if the application can be run to print the file. If there is no program associated with the program then Drag and Drop Printing will just print the file as ASCII text.

## Show Print Dialog

You can use the Show Print Dialog option to determine if Drag and Drop Printing will show the Print Dialog before printing.. The following options are available on the print dialog.

### Range Options

All This will print all pages of the file

Pages This option will only print the pages entered in the To and From edit boxes.

**Note:** You cannot use Pages when you have the Simulated Duplex Printing selected.

### General Options

Print to File This option will cause your file to be printed to a file rather than your printer. You will be prompted for a file name when printing begins.

Setup This button will bring up the Printer Setup dialog.

## **Set Program Icon**

The Set Program Icon allows you to change the icon that is displayed when Drag and Drop Printing runs on your system. To change the icon scroll through the list and select the icon of your choice.

## Set Program Description

The Set Program Description allows you to change the description of the program when it is running under Windows. There are two options for the program description:

### Program Name

This option will display the program name (DDP v2.0) as the description of the program.

### Printer Name

This option will display the printer and port name as the description of the program. The format of the description is '*printer name*' on '*port name*'. *Printer name* is the name of the printer when you installed the driver. *Port Name* is the name of the port that the printer is connected to. An example is 'HP LaserJet III' on 'LPT1:'

## **Authorized International Distributors**

The registered version of Drag and Drop Printing may be purchased from the distributor of your choice.

Distributor: Countries:

WindowShare France, Belgium and Switzerland



## WindowShare



[Click here to print the order form](#)

Bon de Commande Français

Drag and Drop Printing v2.0 LICENCE d'UTILISATION

(Les sociétés peuvent nous consulter pour des licences multipostes ou des licences multiples)

Remplacez le soulignement par les renseignements demandés. Imprimez cette fiche, et adressez le tout avec votre règlement de 210 FF TTC (pour chaque poste), TVA (18,6 %) et port compris à :

WindowShare SARL  
B.P. 2078  
57051-METZ cedex 2  
France  
Fax:(+33)87 32 37 75  
Vox:(+33)87 30 85 57  
Minitel 3615 WinShare

---

Nom et Prénom : \_\_\_\_\_

Adresse : \_\_\_\_\_

---

Code Postal et Ville : \_\_\_\_\_

Nombre de licences : \_\_\_\_\_

Date \_\_\_\_\_

Disquette : \_\_\_ 3 1/2" \_\_\_ 5 1/4"

Total TTC \_\_\_\_\_

Paiement par chèque (bancaire ou postal), Eurochèque, mandat-lettre, ou carte bancaire.(barrer la mention inutile)

Carte bancaire, indiquez ici les 16 chiffres et la date d'expiration.

---

Exp. : \_\_\_\_\_

Signature :

Merci de respecter le principe du shareware.

