



とっても フェロモナ

★ TOTTEMO PHEROMONE ★

Help Manual

Thank you for purchasing this product.

"Tottemo Pheromone" is an erotic slapstick comedy adventure game, where you go through tons of funny experiences with Silk, the cute witch. Please sit back and enjoy the entire game. We suggest that you read these start up and execution instructions before playing the game.

CONTENTS

"Tottemo Pheromone" Guide

Compatible Formats

Game Contents

Characters

Theme Song

Game Execution

Start Up and Installing

Starting the Game

Controls

Customer Care

About Customer Care

Trouble Shooting

About Copyrights and Warranty

Homepage Introduction

Homepage Introduction

"Tottemo Pheromone" Guide

[Compatible Formats](#)

[Game Contents](#)

[Characters](#)

[Theme Song](#)

Compatible Formats

"Tottemo Pheromone" will work only on the following settings (Minimum/Recommendations under Windows 98). Please check if the settings match before booting up the game.

OS	Windows 98,2000,Me,XP
CPU	PentiumII 233MHz / 300MHz or more
Memory	64MB/96MB or more
Display	640*480 HighColor/24bit TrueColor
CD-ROM	8x / 12x or more & CD-DA compatible driver
Sound	CD-DA / DirectSound
Interface	Mouse (or something that will scroll the cursor)

- *Please use Microsoft Windows 98,2000,Me,XP with Direct X.
- *The above settings are minimum/recommended for Windows 98. If you're using a different Windows OS (Me, 2000, XP), different graphic board, or other software, recommended settings will change accordingly. Please check your Windows settings and play at optimal settings.
- *The settings given are for when other application(s) are not running. If other applications are running, we suggest you exit the application(s). Furthermore, we recommend that you not open any new applications while playing the game.

Game Contents

Your pheromone is pumped up, and all the cute girls are after you!! Takuya Sakuragi lives with his cousin, Takashi. One night, while having dinner, a bright light suddenly flashes, and a girl appears out of nowhere. She slowly descends, where Takuya catches her. From this moment on, he becomes a real lady's man. He is no longer an ordinary guy... Sit back and enjoy this hilarious, erotic comedy!

*"Tottemo Pheromone" is a command selection adventure game. This game utilizes a multi-ending system, where the stories unfold and change according to command selections. It's entirely up to you how the stories will unfold.

What's "Majokko Silk"?

"Tottemo Pheromone" is the sequel to our "Majokko Silk." But don't worry; you'll enjoy "Tottemo Pheromone," even if you've never played "Majokko Silk." Here's a short introduction to "Majokko Silk."

"Majokko Silk" is the story of Silk, a sexy witch from another dimension. One day, a witch named Silk suddenly visits Takashi Sakuragi's house...She's from another world! She has a beautiful face, gorgeous blonde hair, and a very attractive body with intriguing clothes. Takashi is astonished by her beauty, but it's only the beginning of his extra-ordinary life...

You'll see Takashi, Silk and Erika in "Tottemo Pheromone" as well.

About the game system

"Tottemo Pheromone" is a command selection adventure game. This game utilizes a multi-ending system, where the stories unfold and change according to command selections. It's entirely up to you how the stories will unfold.

About Hints

To help you pursue the story, "Tottemo Pheromone" utilizes a convenient "Hint System." You can find hints concerning the story divergences by viewing hints found in "Properties." You can utilize these hints in your conquest for your perfect story and ending!

Characters

Takuya Sakuragi



Silk



Sana Matsubara



Ayumi Wakabayashi



Kumi Yamashita



Kaori Miyasaka



Erika Tsunashima



Silk Sakuragi

Theme Song

"LOVE PARADISE"

Lyrics Takeshi Yokoyama

Composer Wasabi

Vocal Noriko Saito

1.

Ijiwaru na amai pheromone ni
Kokoro made tokechaiso
Ichibyō demo gaman dekinai no
Onegai gyutto dakishimete

Seifuku no shita no chocolate
Ima wa mada semi-sweet
Jirasanaide hayaku ajiwatte
Atatakana milk kakete

Koi wa itsumo Magic
Jibun sae mo wasureru
Dare mo shiranai rakuen de
Futari wa hadaka ni naru

LOVE konomama doko made mo
Anata to nobori tsumetai
Asebanu yubi no saki made
Motto kanji sasete
LOVE nannimo kowakunai
Konya wa okini mesumama
Nandomo tabete hoshii no
Datte ichigo no chocolate
Anata no mono yo

2.

Kuchibiru ni tsuita hachimitsu wo
Yukkuri to fukitottara
Atsui yume ga sameru sono mae ni
Moichido daite hoshii no

Hoshi ga furisosogu
Paradise ni ikitai
Akai senaka no tsumeato wa
Kienai ai no tatoo

LOVE anata ga suki dakara
Ironna dance wo shiyo
Heart ga torokeru kiss de
Motto atsuku sasete
LOVE aisuru futari ni wa
Ikenai koto nanka nai
Karada no oku made rendezvous
Short suru hodo moesasete
Anata dake nano

LOVE kono mama doko made mo
Anata to nobori tsumetai
Asebamu yubi no saki made
Motto kanji sasete
LOVE nannimo kowakunai
Konya wa okini mesumama
Nandomo tabete hoshii no
Datte ichigo no chocolate
Anata no mono yo

Director	Tetsu Tsukamoto
Chorus	Noriko Saito & Tsutomu Saito
Manipulator	Kenji Miyamoto
Chorus Arrange	Tsutomu Saito
Bass	Osamu Tsurumi
Guitar	TARO

Game Execution

Start up and Installing

Starting the Game

Controls

Start Up and Installing

Booting up

After your computer starts up, insert the CD into your CD drive. A pop up window should appear. If it does not, open up the game from your cd drive and execute **SILK2UST.EXE**. Game installation, play, and quit will be executed through this pop up window.



*When you first start the game, you will have "Play," "End," and "Help" to choose from.

Play	Will boot up the game/installation.
Uninstall	Will uninstall the game. It will appear after the installation of the game.
Re-install	Will reinstall the game. It will appear after the installation of the game.
Help	Opens up the game help menu.
End	Will exit "Tottemo Pheromone."

*You can boot up the game from the game disk after installation.

About Installing

In order to run "Tottemo Pheromone," you will need to install some data on to your hard drive. If you click "Execute" before the game is installed, it will take you to the installation screen. Please follow the directions.

Installation Settings

You will see the "Reinstall" command in the pop-up menu after installation. Please use this command when you need to change the installation settings.

Uninstall

Use this command when you want to delete "Tottemo Pheromone" files.

***WARNING!!**

Please uninstall using the pop up window. If you delete it any other way, you might not be able to reinstall the game properly.

Starting the Game

Game Start

After installation, please choose "OK" to run the game. The computer will then ask you to switch the install disk to the "Tottemo Pheromone" game disk. Please put the game disk in your CD drive accordingly.

*Restarting the game

You can start the game from the game disk after installation. When you put the game disk in the CD drive after you boot up Windows, the pop up window will appear. Choose "Play" from the menu to play the game.



*You cannot install or reinstall the game from the game disk. Please use the install disk when you want to install/reinstall the game.

Title Menu

Once the game boots up, you will be brought to the title menu. The title menu contains the following:



- Start** Start playing from the beginning of the game.
- Continue** Loads a saved spot.
- Extra** You will be able to view CGs, sex scenes, and songs.
- End** Quit the game.

Controls

Basic Maneuvers

You will use the mouse cursor throughout "Tottemo Pheromone." When making a decision, move the cursor to your choice and click. To proceed to the next message, you will also click on your mouse. If you are able to cancel, you will be able to cancel by hitting the cancel button. The left mouse button is to accept, and the right mouse button is to cancel and bring up the pop up menu.

*You can utilize some of the keyboard keys.

Enter Key

This is the same as a left mouse button click. Push this key to decide and message forward/skip cancel.

Ctrl Key

Message Skip (Press and hold down)

Shift Key

Skip previously read messages.

Esc Key

Message Window On/Off

Tab Key

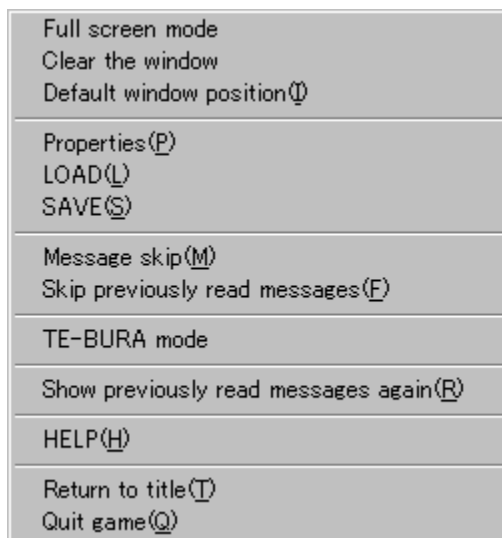
Open the pop up menu.

Cursor Key

Command Selection (Move)

Pop Up Menu

The pop up menu can be accessed by clicking the right mouse button.



Full Screen Mode / Window Mode

Changes the game window size.

Clear the Window / Show the Window

The setting for the window. During "Clear the Window" mode, the game will be on pause.

Default window position

This pushes the text window back to the default location.

Properties

Allows you to change the game setting(s).

LOAD

Loads previously saved game data.

SAVE

Save current position.

Message Skip

The messages will be skipped. It will stop if it reaches a command selection. You can continue to skip messages after a choice has been made.

Skip previously read messages

Messages already read will be skipped. It will stop at a command selection.

TE-BURA Mode

You can set how long you want your message to be displayed. It will stop at a command selection.

Show previously read message again

You can read(confirm) messages that you just read.

HELP

Opens up the help menu.

Return to Title

Returns to the title screen.

Quit game

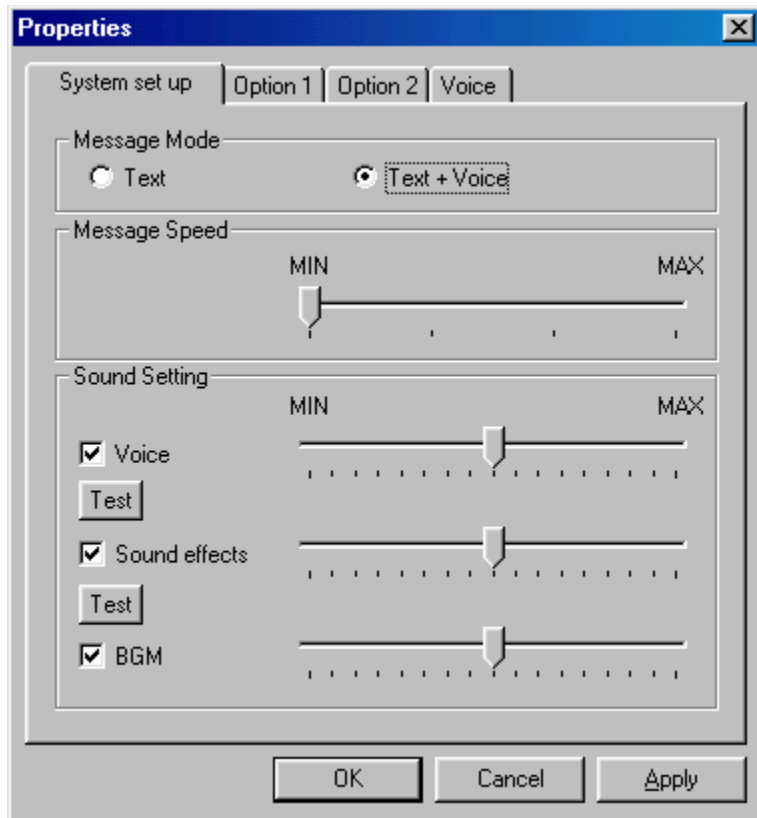
Exits the game.

*In "Extra" Mode, the right button will cancel previous actions. Please go to the title screen or proceed to the game to bring up the pop up menu.

Properties Sheet

Accessible through the pop up menu under "Properties."

System set up



Message Mode

You can select the way to show messages.

Text : You can only see messages.

Text+Voice : You can see and hear messages. (Voices will be in Japanese.)

Message Speed

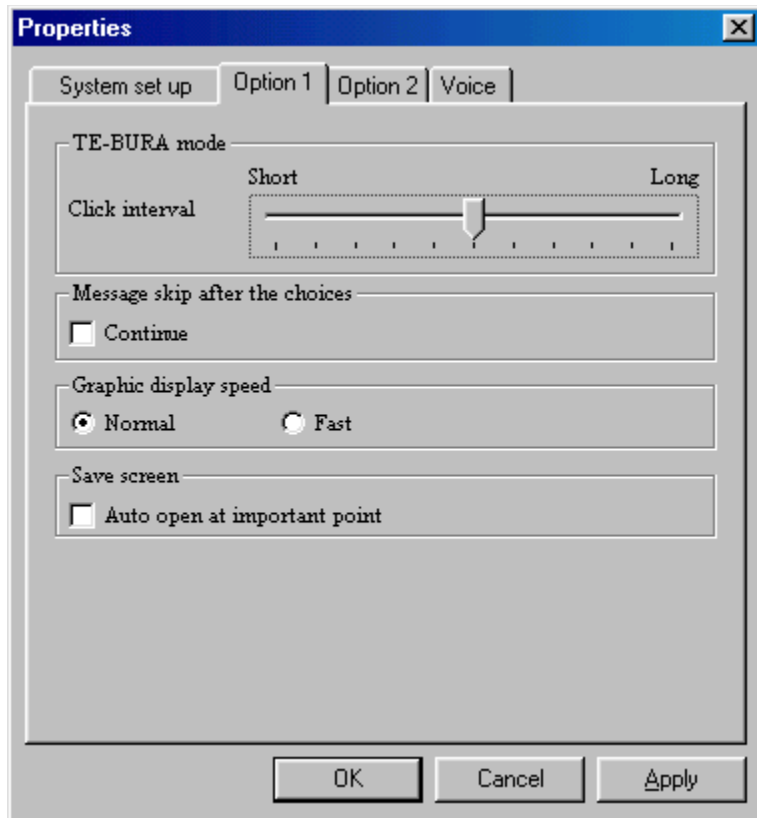
Allows you to change your text speed. Choose "Text + Voice" if you want to hear character voices.

Sound Settings

You can turn on/off and change the volume of your BGM, Voices, and Sound Effects. MAX is the loudest you can set it to. You can test your Voice and Sound Effects volume by clicking the "Test" button.

*Depending on your sound board, you might not be able to change the BGM volume under the property settings. If this is the case, please adjust the volume with Window's "Volume Control"

Option 1



TE-BURA Settings

Mouse click interval. You can choose the time duration for auto text scroll.

Message skip after the choices

You can choose to skip texts after a choice has been made.

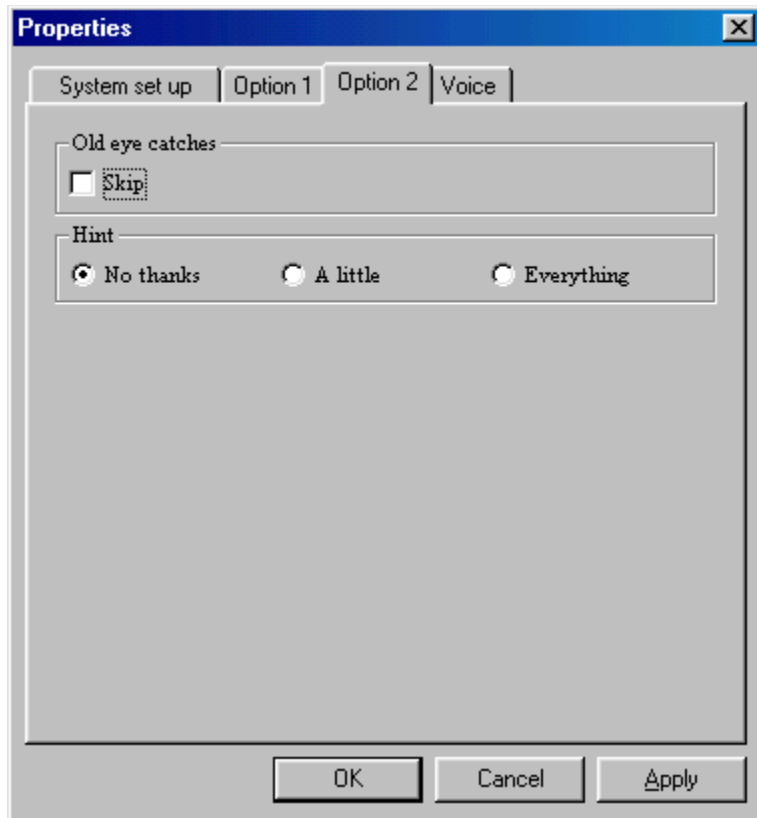
Graphic display speed

You can choose the speed of your graphic display. If you choose "FAST," the graphics will load fast. In "Normal," we have added motions, so it will load a bit slower. If you are running under the recommended settings, you should run on "FAST."

Save screen

You can save the game at certain scenario points (the game will not save automatically).

Option 2



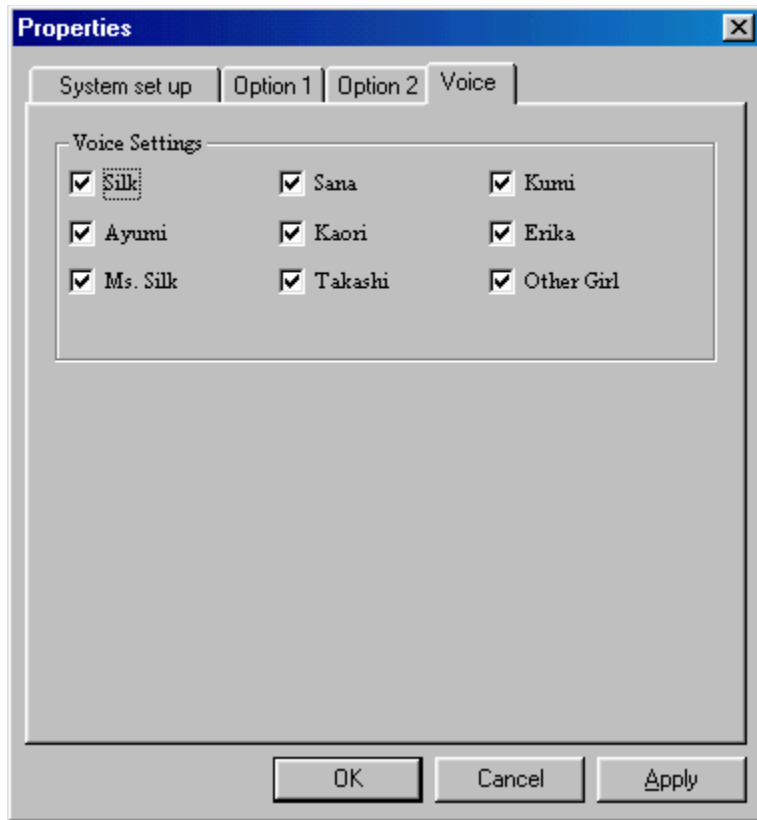
Old eye catches

You can skip Eye-catch scenes which have been previously viewed.

Hint

You can choose either to show a hint or not show a hint at each command selection.

Voice



Voice Settings

You can turn on/off a particular character voice.

Customer Care

[About Customer Care](#)

[Trouble Shooting](#)

[About Copyrights and Warranty](#)

About Customer Care

When you have problems, please follow the instructions in Trouble Shooting. If you still experience problems after following the instructions, please contact our customer care section. When you do this, please send the user registration card included in this game package.

*The CD itself may have defects. Please send us the CD with a memo describing the problems. We will research the cause and exchange the defective CD with a new CD free of charge.

User Registration

Fill out the user registration card and send it to us. Otherwise, you may not be able to receive our user support.

If you have any opinions about the game, please send them to us. Your opinions are very important to us.

Questions about the Product

Please send us your questions, included with a stamped, self-addressed envelope. You may also E-Mail us.

About Hints

If you would like hints about the game, you can contact us by mail or E-Mail. Please send us a description of what hints you would like help with.

Address

G-Collections.com
3540 West Sahara N. E-155
Las Vegas, NV 89102-5816

E-mail

info@G-Collections.com

*Concerning our homepage, please refer to [G-Collections.com Homepage Introduction](#).

Trouble Shooting

We continually strive to control the quality of our products. However, if you experience difficulties running a program, please try the following procedures first.

- +Please check the power supply to your computer and devices.**
- +Make sure your systems do not have any problems.**
- +Make sure your system meets the program system requirements.**
- +Is MS Windows running without problems?**
- +Did you follow the instruction manual procedures?**
- +Are your system devices compatible with MS Windows?**
- +Are other applications running without problems?**
- +Did you restart your system and try to run the program again?**

We have confirmed that this product is compatible with MS Windows under normal circumstances. However, this does not include conditions when you change the configuration of your system or when the system is not certified as a licensed product. If you need certain adjustments with your device, please contact the manufacturer of the device for further assistance.

When you have sound related trouble...

This game plays BGM, sounds, and other sound effects using DirectX. If you have trouble playing these simultaneously, please check your DirectX driver or your sound card driver.

Furthermore, please note that if you are originally unable to play Windows start up sounds or other sounds, you will not be able to play any sounds for this game.

Please try re-registering the PCM switch driver.

After you try all of the above and still have problems, please contact our [Customer Support](#).

About Copyrights and Warranty

About Copyrights

The copyrights of this product are owned by TRABULANCE and G-collections.com. This includes the game program, sound data, graphic data, printed matter, and all the accessories attached to this product. It is prohibited to copy all or a part of them.

It is prohibited to show or distribute the whole or part of this product without permission.

It is prohibited to rent this product out.

It is unlawful to sell this product.

If any violation of these articles is found, we may take legal action.

About Warranty

We do not guarantee this program's normal movement, if your device or OS does not function properly. Furthermore, we do not guarantee its normal movement if it is affected by other programs. We do not guarantee that this program will not affect other programs.

*All the names in this help file are general trademarks or registered trademarks of companies.

Homepage Introduction

Homepage Introduction

Homepage Introduction



You can check out our latest game information, new illustrations, on-line shopping, and more. We sometimes ask our fans to give us their ideas for our games. Check us out now!

Homepage URL

<http://www.G-Collections.com/>

You can also check out the actual game producer's Japanese Homepage.
<http://trb.cd-bros.co.jp/>

Information Mail Address

You can contact us using this e-mail address.

info@G-Collections.com


{button Send Mail,EF(`mailto:info@G-Collections.com?subject=About Homepage',`,1)}

Support Mail Address

Please contact us through this e-mail address concerning customer care.


support@G-Collections.com

{button Send Mail,EF(`mailto:support@G-Collections.com?subject=Tottemo Pheromone Users Support',`,1)}

Takuya Sakuragi  Silk

 Sana Matsubara

 Ayumi Wakabayashi

 Kumi Yamashita


 Kaori Miyasaka

 Erika Tsunashima


 Silk Sakuragi

Takuya Sakuragi

Here's our hero. He travels to Tokyo and moves in with his cousin Takashi to go to college. He hopes to find a girlfriend by Spring. Instead of paying rent, he starts helping out at Takashi's cake shop "Sakuragi" and...

Takuya Sakuragi  Silk

 Sana Matsubara

 Ayumi Wakabayashi

 Kumi Yamashita

 Kaori Miyasaka


 Erika Tsunashima

 Silk Sakuragi


Silk



The story's heroine. This beautiful, blonde witch from another dimension suddenly shows up in the Sakuragi living room. As you can probably guess, she doesn't know anything about this world, so she sometimes behaves in a very "unique" way. She asks (forces, in a sense) Takuya to help her return to where she belongs.

Takuya Sakuragi  Silk

 Sana Matsubara

 Ayumi Wakabayashi

 Kumi Yamashita

 Kaori Miyasaka


 Erika Tsunashima

 Silk Sakuragi


Sana Matsubara




Sana works at the cake shop Sakuragi. She is an energetic and honest girl. She's interested in Takashi, but she doesn't have the courage to begin an affair with him.


Takuya Sakuragi  Silk

 Sana Matsubara

 Ayumi Wakabayashi

 Kumi Yamashita

 Kaori Miyasaka

 Erika Tsunashima

 Silk Sakuragi

Ayumi Wakabayashi



Ayumi works at the bakery shop "Marine," which is located near Takashi's shop. She and Sana are close friends and go to a same school. She may look younger than she actually is, but she's still very popular among her customers. Even though she has a boyfriend, she seems to be interested in Takuya.



Takuya Sakuragi

Silk



Sana Matsubara



Ayumi Wakabayashi



Kumi Yamashita



Kaori Miyasaka



Erika Tsunashima



Silk Sakuragi

Kumi Yamashita



This lustrous lady works in the Japanese confectionary shop "Taikodo." It's located in the same shopping mall as "Sakuragi." Kumi has a fantastic body

but she doesn't seem too aware of the fact.
She has a warm personality and is a natural at playing innocent. She has a very disarming smile, and everyone seems to know it.



Takuya Sakuragi

Silk



Sana Matsubara



Ayumi Wakabayashi



Kumi Yamashita



Kaori Miyasaka



Erika Tsunashima



Silk Sakuragi

Kaori Miyasaka



Kaori is a hostess at a club called Carrot. This club is also located in the

shopping mall where Sakuragi is. The uniforms for the club are bunny costumes! Kaori has always been a very quiet and introverted girl, but recently, she's started to like the idea of being looked at.



Takuya Sakuragi

Silk



Sana Matsubara



Ayumi Wakabayashi



Kumi Yamashita



Kaori Miyasaka



Erika Tsunashima



Silk Sakuragi

Erika Tsunashima



Erika used to work for Takashi. She calls him Bro and seems pretty close to

him. She has just returned from studying abroad. Erika was always a bit childish and pampered, but it seems her trip abroad has helped her to grow up a bit. However, she's her old self around Takashi. When she meets Takuya, who looks a lot like Takashi, she's more than a little interested in him.



Takuya Sakuragi

Silk



Sana Matsubara



Ayumi Wakabayashi



Kumi Yamashita



Kaori Miyasaka



Erika Tsunashima



Silk Sakuragi

Silk Sakuragi



Silk is now Takashi's wife, but she was originally a witch from another world.

Because she decided to live on Earth, she has lost her magical powers, but she still has the knowledge, and her personality hasn't changed either. She isn't embarrassed to show her feelings towards Takashi in public, but it sure embarrasses Takuya and Sana.

