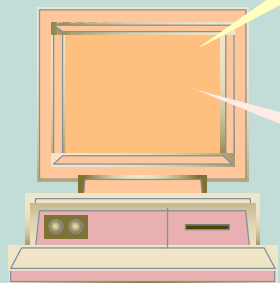


ONE STEP TOOMANY

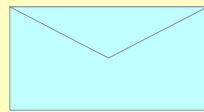
Unlike Lotus Notes and other group discussion packages, Channels utilizes a cumbersome multistep process for remote use. Channels Remote relies on an existing mail system for communications services.

A Launch your e-mail package and retrieve new messages from the Channels server.

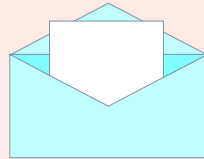


Channels Remote client

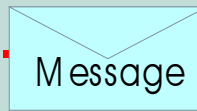
E-mail package



Channels Remote

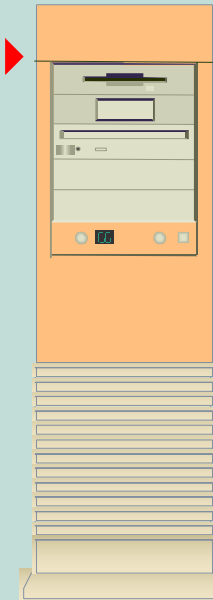


Message



B Launch Channels Remote to retrieve the messages from the e-mail in-box.

C Reverse the process to send messages back to the server.



Channels server

