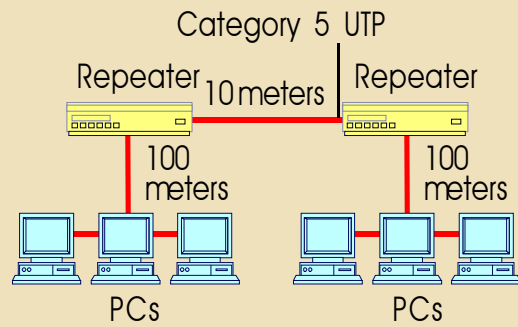


## Fast Ethernet

With Fast Ethernet, you are generally limited to two repeaters between any two end nodes. With Category 5 UTP, the maximum distance between any two devices is 100 meters. (Fiber-based products extend this limit.) The maximum distance between two end nodes is  $400 - (r \times 95)$  where  $r$  is the number of repeaters.

In the configuration shown, you have  $400 - (2 \times 95) = 210$ .



If you run 100 meters from the repeaters to your PCs (top), you have 10 meters left to run between repeaters. If you run 50 meters from repeaters to PCs (bottom) you have 110 meters between repeaters.

