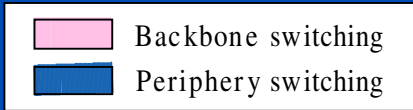
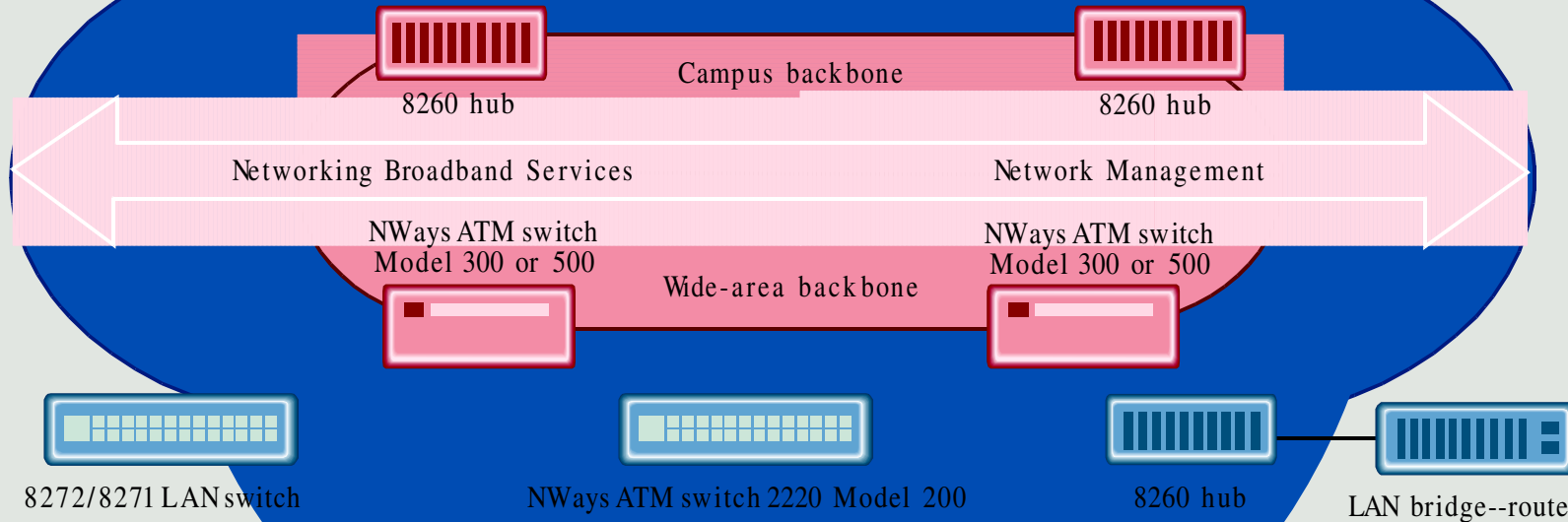


# IBM SWITCHED VIRTUAL NETWORKING

NWays ATM workgroup switch



Mainframe communications controller



The four main components of IBM's Switched Virtual Networking strategy—periphery switching, backbone switching, networking broadband services, and systems management—will be implemented in many established products to preserve investment in current networks. The strategy will decentralize routing in the network, moving the function all the way out to end stations, and providing one-hop routing between any two communicating end stations. Source: IBM