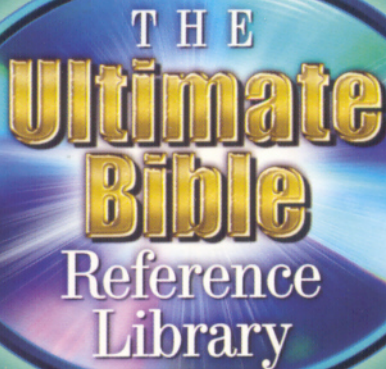


LOGOS  
Library  
SYSTEM

RUNS UNDER  
Microsoft® Windows®  
3.1 & 95/98/00

 **NELSON**  
REFERENCE & ELECTRONIC  
PUBLISHING



THE  
**Ultimate  
Bible**  
Reference  
Library

QUICK START GUIDE

THE  
**Ultimate  
Bible**  
Reference  
Library

**USER'S GUIDE**



P.O. Box 141000, Nashville, Tennessee 37214-1000

## Nelson's Electronic Bible Reference Library, Running Logos Library System Version 2.1

*The Ultimate Bible Reference Library Quick Start Guide*, Copyright © 1998, 2001 by Thomas Nelson, Inc. All rights reserved. Logos Library System, Copyright 1995–1997 by Logos Research Systems, Inc.

*Nelson's Electronic Bible Reference Library* and *Nelson Electronic Publishing* are trademarks of Thomas Nelson, Inc. Logos Bible Software and The Logos Library System are trademarks of Logos Research Systems, Inc., Microsoft is a registered trademark and Windows is a trademark of Microsoft Corporation. Ami Professional is a trademark of Samna Corporation, a subsidiary of Lotus Development Corporation.

Information presented in this document is subject to change without notice and does not represent a commitment on the part of Logos Research Systems or Thomas Nelson, Inc. The software described in this document is furnished under a license agreement or nondisclosure agreement which appears in the *User's Guide*. The software may be used or copied only in accordance with the terms of the agreement. It is against the law to copy the software except as specifically allowed in the license or nondisclosure agreement. No part of this manual may be reproduced or transmitted in any form or by any means, electronic, mechanical, or chemical, for any purpose without the express written permission of Thomas Nelson, Inc.

## 1 The Basics

---

### Welcome!

Welcome to *The Ultimate Bible Reference Library*! You have purchased an expandable library system that is stocked with books from the world's leading publisher of Bibles and Biblical reference material. We hope that it brings you many fruitful and fulfilling hours of study and enjoyment, and equips you to understand and share the Word of God like never before!

Read through the rest of this guide for a quick overview of the most useful and powerful features of *The Ultimate Bible Reference Library* (TUBRL). The software engine behind this remarkable collection is the Logos Library System™ (LLS), the leading standard for electronic publishing. It provides powerful, yet easy to use software, and allows you to quickly, easily, and economically add additional books to your library as your needs change.

*The Ultimate Bible Reference Library* (TUBRL) contains the complete LLS technology. Nothing is missing. The LLS opens this unmatched collection from Nelson along with any other books sharing the LLS standard, regardless of the publisher. Now you can stock your electronic library with the best books from Thomas Nelson, and identify others that are guaranteed to work seamlessly with TUBRL by looking for the LLS logo where you buy electronic books.

### Getting Help

We've made it easy for you to get help when you need it! TUBRL has plenty of help ready and waiting for you. Just select the **Help** menu option, then **Contents** for context-sensitive help. Also, the complete electronic *User's Guide* for TUBRL is available as a separate book in your Library under **Logos Research Systems, Documentation**. This TUBRL edition also contains a 192-page print version of the *TUBRL User's Guide*.

### Technical Support

#### Telephone

You must call 615/902-2440 Monday–Friday, 8:00 A.M.–5:00 P.M. CST. Please have your complete system information ready. If you reach a recording, please leave a mes-

sage with your name and phone number, and a technician will return your call as quickly as possible. Please consult this *Quick Start Guide* before calling tech support. You will find that these guides will answer most of your questions. See the System Requirements section of this guide (below) for a list of things you should know about your computer system before you call. Technical support fees may apply.

### **E-Mail**

The technical support department can be reached via e-mail at [NelsonCDTech@ThomasNelson.com](mailto:NelsonCDTech@ThomasNelson.com). When requesting technical support via e-mail, please include your name, phone number, and brief description of the problem in the e-mail message.

### **The World Wide Web**

Nelson Reference & Electronic's website is at [www.Nelsonreference.com](http://www.Nelsonreference.com). The Logos Research Systems (developers of the LLS) website is [www.logos.com](http://www.logos.com). You can find technical support information on the LLS 24 hours a day, seven days a week. Nelson also maintains a technical support site at [www.nelsondirect.com/nelsondirect/support.asp](http://www.nelsondirect.com/nelsondirect/support.asp). This is a free benefit to all owners of Nelson's LLS products.

NOTE: Please do not call Logos' technical support telephone number for questions about TUBRL, unless directed to do so by a Nelson technician.

## **2 I'm Ready to Install & Start TUBRL**

---

### **System Requirements**

As with any computer software, the better your hardware is, the better your software performance will be. Here are the essentials: **Operating System**—Windows 95™ or Windows 3.1™; **Computer**—486sx or better, DOS 3.3 or later; **Memory**—8Mb of RAM memory required, 16Mb of RAM recommended; **Monitor**—Any Microsoft Windows 3.1 or later compatible VGA graphics card and monitor; **Disk Storage**—Hard drive with at least 15 Mb of free space; **CD-ROM**—Minimum 2X CD-ROM drive

### **How Do I Install TUBRL?**

If you have a previous version of LLS installed on your computer, be sure to see the instructions in the Readme file. Double click on the Nelson Readme icon in the Nelson Electronic Library program group. Otherwise proceed as follows:

1. Insert the TUBRL CD-ROM CD#1 in your CD-ROM drive.
2. If you are running **Windows 3.1**, select **File . . . Run** in the Program Manager. If you are running **Windows 95**, select **Start . . . Run**, or if you have **Autoplay** enabled, the Setup will automatically run.
3. In the Run dialog's **Command: line (for Windows 3.1)** or **Open: line (for Windows 95)**, type **D:\SETUP** (Where D: is your CD-ROM drive letter).
4. Click "OK." Follow the on-screen instructions to complete setup.

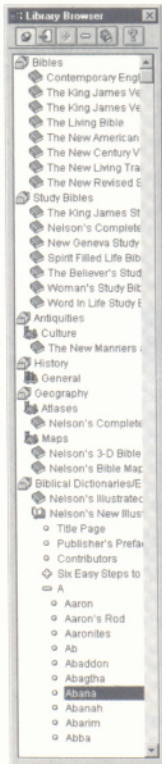
Setup Complete! When this message appears, you are ready to start TUBRL.

### **How Do I Get Free Tech Support and Other Benefits? The Nelson Electronic Advantage Program**

Fill out and mail the Registration Card today, which automatically enrolls you in the Nelson Electronic Advantage program. It is very important that you complete and return your registration, so that you will be eligible for free technical support, special discounts on unlocking books, and product upgrade announcements.













## What's in My Library?

The **Library Browser** (Figure 2) appears on the left-hand side of the main screen. Every book in your library is displayed here, sorted by categories—such as **Bibles** or **Commentaries**—and further sorted by subcategories. From here you can open any book in your library. If you have a large library, you probably won't be able to see all of your books at once. Use the scroll bar on the right edge of the browser window to scroll up and down through your titles. The **Library Browser** is its own window. This means that you can resize and reposition it to fit your needs.

### • Categories and Subcategories

As you can see in Figure 2, each line in the browser begins with an icon. There are three icons you should be familiar with:

- ◆ the **Category icon**—closed (  ) and open (  ),
- ◆ the **Subcategory icon**—closed (  ) and open (  ), and
- ◆ the **Book icon**—closed (  ) and open (  ).

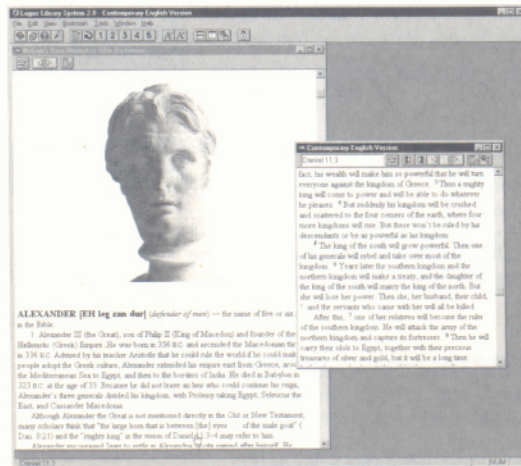
Clicking on any of these icons expands or contracts the browser outline at that level. For example, if you click on the **Bibles** category, it should collapse into a closed category icon. If you click on the closed category icon, the **Bibles** category should toggle back to being expanded.

The program sorts your library by category and subcategory automatically. Which books you have in each category and/or subcategory in your browser is determined by which books you have in your library. See **HOW DO I ADD MORE BOOKS TO MY LIBRARY?** in this guide for instructions on how to expand your library.

### • Plus, Minus, and Bullets

There are three other icons in the library browser that you should be aware of. Look at Figure 2 at the bottom half of the library browser. Notice how the book icon for *Nelson's New Illustrated Biblical Dictionary* is an open book icon, and beneath it there is a detailed outline of the book's contents. The **Title Page** entry is preceded by a dot, or bullet ( • ), which means that there are no further subdivisions.

The outline heading that reads **Six Easy Steps to Better Bible Study Using Nelson's New Illustrated Bible Dictionary**, however, is preceded by a plus icon ( + ), which means that there are further entries beneath it. If you were to click on the plus icon with your mouse, those entries would become visible in the browser. The outline entry which reads **A** is preceded by a minus icon ( - ), meaning that particular entry in the outline is open (expanded) to the next possible level. Clicking on the minus would collapse that outline entry into one preceded by a plus.



## Where Do I Read My Books?

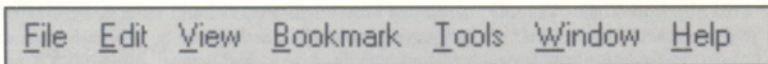
The **Library Browser** is the bookshelf where you keep your books, and the **Viewing Window** is the desktop on which you read them. This desktop is on the right-hand side of your screen, and it usually takes up the majority of the screen. It can also be moved and resized just like any other window.

Figure 2:  
The Library Browser

Figure 3:  
The Viewing Window

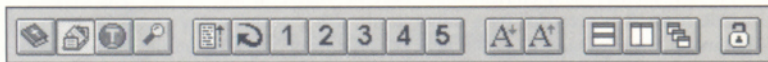


### • The Menu Bar—The Main Functions



As you can see in Figure 3, the Viewing Window has several parts. Across the top, there is a menu bar. From here, you can access all of the functions of the LLS software. The menus and their respective commands are explained in detail in the *User's Guide*.

### • The Tool Bar—The Main Shortcuts



Beneath the Menu Bar is the Tool Bar. It is fully customizable—you can pick and choose from a multitude of possible button faces and commands. The default tool bar (what automatically appears) is very capable, though. Here are the buttons you should see in the default tool bar and what they do.



**Print**—Clicking on this button pulls up the Print dialog. Use this to print the article you are viewing.



**Browser On/Off Toggle**—Clicking on this button will toggle the Library Browser on and off.



**View Topic Browser**—Clicking on this button will pull up the Topic Browser.



**Search**—Opens the Search dialog.



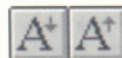
**History**—Opens the History list, a list of the articles you have visited in your current session.



**Backtrack**—Sends you back to the most recently visited article.



**Go To Bookmark**—Numbered 1–5, these buttons recall bookmarks that have been set using the Bookmark feature. To set a bookmark to the article you are currently viewing, go to the Bookmark menu, choose Set, and then choose the number of the bookmark you wish to set.



**Scale Font Size**—Use these buttons to change the font size of the text in any open book.



**Arrange Desktop**—These buttons arrange all of the open windows in the Viewing Window. They are: *Tile Horizontally*, which stacks all open windows horizontally; *Tile Vertically*, which fits all open windows side by side; and *Cascade*, which switches all open windows to the default size and overlaps them.



**Unlock Books or Collections**—Brings up the Unlocking Dialog, which will allow you to expand your library by “unlocking” additional books or collections of books that have been preshipped in a “locked” format on the CD or CDs that you have purchased. See I'M READY TO UNLOCK BOOKS in this guide for step-by-step directions.

## How Do I Read My Books?

Once you open a book—or several books—into the Viewing window, you will notice that each book has its own distinct window, complete with a Title Bar and a Tool Bar. There are two different kinds of Book Windows: Biblical and Non-Biblical. *Biblical Book Windows* are reserved for Bibles or biblical commentaries which are laid out in canonical order. *Non-Biblical Book Windows* are used by all other types of books.

### • Features of All Book Windows

**Scrolling.** Along the right edge of all Book Windows there is a scroll bar. Use it to move up and down in the text. You can also use the Up Arrow, Down Arrow, Page Up, and Page Down keys on the keyboard. Notice that as you click and drag the slider on the scroll bar, the title of a particular article appears (or the Scripture reference if in canonically ordered book). If you drag the slider down until it shows the article you are looking for and release it at that point, the text window will display that article.

**Title Bars.** Along the top edge of the window is the Title Bar. This shows the title of the Book Window. On the right corner of the Title Bar are the familiar window control buttons. (The window control buttons pictured here appear in Windows 95™. You can use these buttons to minimize, maximize, or close the Book Window.)

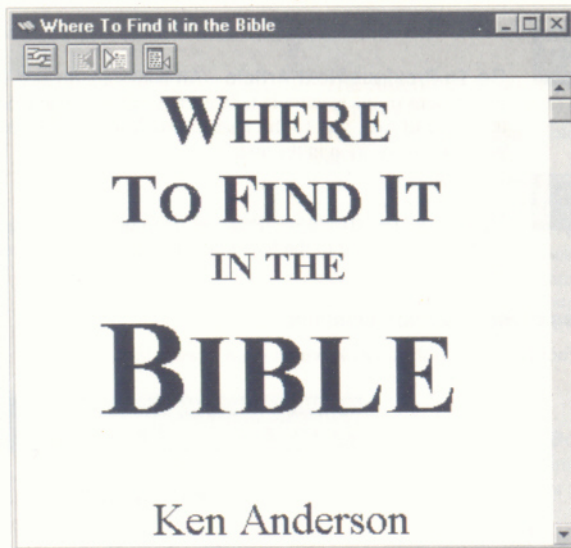


Figure 4: Non-Biblical Book Window

### • Features of Non-Biblical Book Windows

Beneath the Title Bar, each Non-Biblical Book Window has a Tool Bar that is specific to that Book Window alone.



**Link**—Links any number of books together which share the biblical/canonical reference structure like Bibles and commentaries. The texts will scroll together, e.g., if one text is placed at John 1:1, the other texts will also jump to John 1:1.





**Go To Previous/Next Article**—All books are divided into “articles,” or divisions of the electronic text, each beginning with a headline. These buttons will take you to the nearest article forward or backward from your current location in the text.



**Synchronize Browser**—Pressing this button will cause your library browser to open up to the location which matches your current location in the text.

#### • Features of Biblical Book Windows

The Tool Bar for a Biblical Book Window has a few added features.

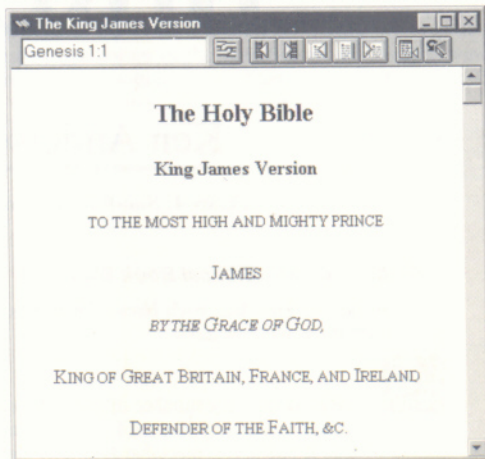


Figure 5: Biblical Book Window

## Genesis 1:1

**The Reference Box**—This box serves two purposes.

- 1) It shows the current Bible book, chapter, and verse.
- 2) If you click your mouse in the Reference Box of a Biblical Book Window, you can type in a new reference. E.g., type in 2 Kings 4:5, press the Enter key on your keyboard, and you'll go directly to 2 Kings 4:5. Typing an abbreviation, like 2 Ki will also take you to 2 Kings 1:1.



**Go To Previous/Next Book**—Use these buttons to jump to the beginning of the nearest Bible book forward or backward from your current position.



**Go To Previous Chapter, Go To Reference, & Go To Next Chapter**—The first button will take you to the beginning of the nearest chapter backward from your current location. The second button will start the **Go To Reference Dialog**. From here you can go to any biblical reference location in the Bible. The third button will take you to the beginning of the next chapter forward from your current location.



**Set Bible Target Window**—This is a “toggle button,” that is, it’s either on or off. Pressing this button sets the current window as the Bible Target Window, which means that clicking on a Bible reference in any book will take you to the referenced location in the Bible Target Window Book. Note that the Bible Target Window doesn’t have to be a Bible—if you want to send all Bible reference clicks to the nearest reference in *Matthew Henry’s Commentary*, you are free to do so.

### 3 I’m Ready to Use TUBRL—What Do I Need to Know?

Now that you have a grasp of the main TUBRL features, it’s time to put your library through its paces. This section of the guide uses real examples from real books in *The Ultimate Bible Reference Library*. Here you will learn how to open the books in your library, use their hypertext features, link canonically ordered texts, and perform several types of searches, including topic searches, word and phrase searches, reference searches and keylinks. You’ll also learn how to utilize *Strong’s* numbers throughout your library.

#### How Do I Open a Book?

There are three different ways to open books. All use the Library Browser.

##### • Right Click

- 1) Use the scroll bar and/or use the left mouse button to expand and collapse levels in the browser until you see the book you are planning to open.

- 2) Click on the book you wish to open with the right mouse button.
- 3) Choose **View Selection** from the menu which appears.

##### • Drag and Drop

- 1) Use the scroll bar and/or use the left mouse button to expand and collapse levels in the browser until you see the book you are planning to open.
- 2) Point to book you wish to open with the mouse pointer.
- 3) Press and hold down the left mouse button until your mouse pointer changes to the pointer pictured below. Then “drag” the book title from the Library Browser into the View Window and “drop” it into the View Window by releasing the mouse button.



#### Drag and Drop Mouse Pointer

##### • Double-Click

You should only double-click on the text portion of a Library Browser outline item. Double-clicking on any of the icons in the browser will cause them to toggle back and forth between expansion and contraction in rapid succession.

- 1) Use the scroll bar and/or use the left mouse button to expand and collapse levels in the browser until you see the book you are planning to open.
- 2) Double-click on the book title you wish to open.
- 3) The book’s outline will expand. Double-click on the article title you wish to open. If you double-click on an article title preceded by a plus or minus, that level will expand or contract. If you double-click on an article title preceded by a bullet (dot), the book will open in the View Window to that article.

#### Now Try It!

For the next section of this guide, you’ll need to have *Nelson’s New Illustrated Bible Dictionary* (NNIBD) open in the View Window (users of *NEBRL Starter Edition* can substitute *Smith’s Bible Dictionary*). We’ll assume that you’re starting from a blank View

Window. Select the NNIBD in the Library Browser by clicking on it with the left mouse button. Open the contents of the book by clicking on the Expand button in the Library



Browser Tool Bar ( ). Click on the Library Browser entry that reads A. Again, click on the Expand button to show all of the articles in the book that begin with the letter A. Right click on the entry for Aaron and choose View Selection from the menu that appears. The NNIBD should open to the article on Aaron, which leads us to other features you can use.

*Nelson's New Illustrated Bible Dictionary (NNIBD)*

## Bible References, Internal Book Jumps, and Popups

Now that you have the Aaron article in the NNIBD open, you'll notice that not all of the text in the text window is the normal system color (typically black). If you are using the default colors to highlight hypertext elements in your books, then Bible references in the text should be dark blue, internal cross-references should be red, and the footnotes or abbreviations should be dark green. You can, of course, change these colors to match your own aesthetic sense. See System Management Preferences in the User's Guide.

### • Bible References

Reading from the beginning of the Aaron article on your screen, the first piece of hypertext you should encounter is this: ". . . his marriage to Elisheba, daughter of Amminadab (Ex. 6:23)." Click on Ex. 6:23 with the left mouse button. Your preferred Bible should now open to the book of Exodus, chapter 6, verse 23. If the NNIBD window you were just viewing disappeared, it's because it's lying directly behind the Bible window. Press the



Cascade button on the main Tool Bar ( ) to show all of your available windows.

To change your preferred Bible version, bring up the Preferences Dialog by choosing Preferences from the Edit Menu. Look toward the bottom of the General tab. There you will find a drop-down list named Preferred Bible that contains the titles of all of the Bibles you have currently loaded into your library. Choose your new preferred Bible from this list. Press OK to save the changes and return to your text.

### • Bible Reference Information

You can quickly view Bible verses from their hypertext link without opening a Bible. Right mouse click on the Bible reference within NNIBD and select Information from the resulting right mouse menu. The Bible verse in question will be displayed in a temporary pop-up window.

### • Internal Book Jumps

If you pressed the Cascade button on the main Tool Bar, the NNIBD window will be lying in back of the Bible window. To bring the NNIBD to the front, click on any part of its window. It will immediately jump to the front.

Again reading from the front of the Aaron article, you should come across this piece of text ". . . A central figure in the EXODUS from Egypt. . . ." The word "Exodus" is in red. Click on the word "Exodus" and your NNIBD window should immediately display the article entitled "Exodus, the." Scrolling through that article, you'll come upon the word "Passover," also highlighted in the Hotspot Jump color. Click on "Passover" to be whisked to the article entitled "Feasts and Festivals" under the section entitled "Passover and the Feast of Unleavened Bread." Your electronic reference library is already saving you time and effort—no more flipping pages.

## How Do I Search Through My Books?

### 1. Searching for Topics

Get back to the article on the Exodus by pressing the Backtrack button from the main Tool



Bar ( ). Again reading from the beginning of the article, right click on the first occurrence of the word "Moses." Choose Topic Search → All Books from the resulting



menu. Click on the Show Hits In Context button ( ) to see a context for each hit in your search. Click on the "+" symbol under the titles on the left side of the window, and you should get something approximating Figure 7, depending on your library. Double-clicking on any of the search hits will take you to the precise article shown in the Search Results window.



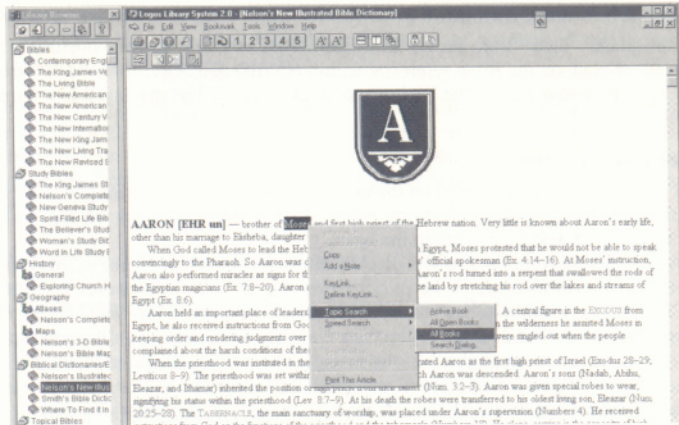


Figure 6: Topic Search

### The King James Version of the Bible

Let's move on. Close all active windows.

Open the King James Version of the Bible to John 1:5 (see "How Do I Open A Book?" in this guide.)

## 2. Searching for Words

### —All Books

Right click on the word "light" in John 1:5, and select Speed Search → All Books from the resulting menu. In just a few seconds, you will have found every occurrence of the word "light" in your entire library.

### —Just Some Books

To search only the book that you are in for a particular word, right click on the word and choose Speed Search → Active Book from the resulting menu. To search all of the

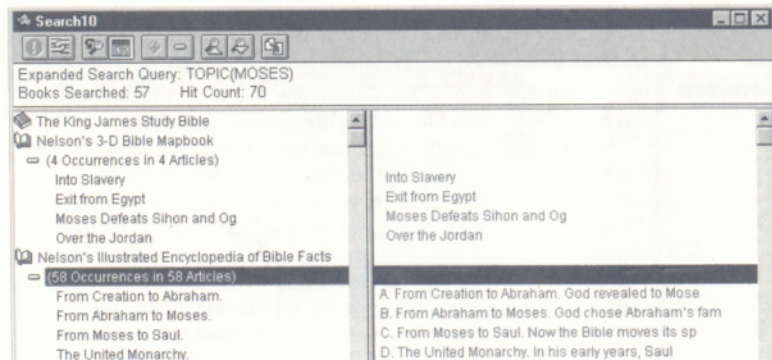


Figure 7: Search Results With Hits in Context

books that you currently have open, right click on the word and choose Speed Search → All Open Books from the resulting menu. If you want to be even more selective, the full Search Dialog will allow you more options. You can get to it quickly by right clicking on the word you want to search for, and choosing Speed Search → Search Dialog from the resulting menu.

## 3. Searching for References

Reference Searching is one of the most powerful searches your Electronic Library can perform. Suppose you ask the question, "Where in my library is John 1:18 mentioned in any context?" A simple word search isn't up to the task. Phrases like "Jn. 1:18," "Joh. 1:18," "John's Gospel, chapter 1, verse 18," and even "St. John 1:1-24" or just "vv. 17-20" should match your query, and would be missed by even the most impressive of word search engines.

However, in NEBRL, you can ask this simple question and get the correct answer every time. In the KJV text window, scroll down until you see John 1:18 on the screen. Now right click anywhere in the verse. The particular word you click on isn't important.

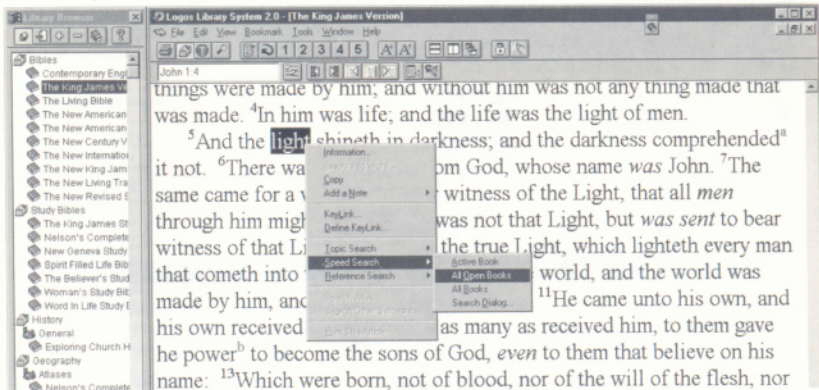


Figure 8: Speed Search

Now choose Reference Search → All Books from the resulting menu. The Search Results window shows every place John 1:18 is referenced in your library, in any context.

## How Do I Use Strong's Numbers?

Close all open windows *except* the KJV window. Choose View → Inline Strong's/TVM from the Menu Bar. Immediately, Strong's numbers appear following almost every word (see Figure 9). Click on the Strong's number 3056 following “. . . the Word.” The *Strong's Numbers Enhanced Lexicon* will open to the article on *logos*, Strong's number 3056.

*New Strong's™ Guide to Bible Words* and *New Strong's™ Dictionary of Hebrew & Greek Words*

For this section, you'll also need to have the *New Strong's™ Dictionary* and the *New Strong's™ Guide to Bible Words* open, as well as the King James Version of the Bible.

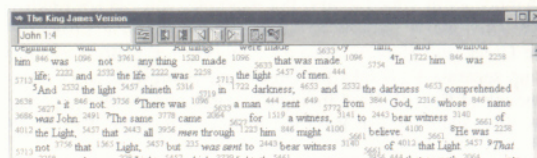



Figure 9: KJV With Inline Strong's

These titles are listed under the Language category and Dictionaries subcategory. Use your favorite method to open these two books to their respective title pages.



Click the Tile Horizontally button on the main Tool Bar (  ) to quickly arrange all three books on the screen where you can see them. It doesn't matter what order they're in on the screen. Click in the KJV text window to make it the active text window. Its title bar will change color to indicate that it is the active window. To turn the inline Strong's numbers on or off choose View → Inline Strong's/TVM from the main Menu. Make sure the KJV window is positioned on John 1:1.

## Strong's Numbers as a Language

In the Logos Library System, *Strong's* numbers are treated as two distinct languages (one for Hebrew numbers, and one for Greek), which enables you to apply all language-sensitive features, such as Searching and KeyLinking, to *Strong's* numbers.

## Word Searching on Strong's Numbers

Right click on the number 2316—either in the *Guide*, or in the *Dictionary*, or in the KJV with inline numbers. Choose Speed Search → All Books from the resulting right click menu. All locations in all books where the *Strong's* number 2316 appears will appear in a new Search Results window.

## How Do I Link Key Words Together From Different Books?

**KeyLinks** allows you to “link” words in a particular language to your favorite reference work for that language. KeyLinks are language-based, which means that you can set a



KeyLink for any language that occurs in your Library. For example, you can set English to KeyLink with *Smith's Bible Dictionary*, Hebrew to KeyLink with the *New Strong's™ Dictionary*, and so on. Since Greek and Hebrew *Strong's Numbers* are defined as their own languages, you can set up separate KeyLinks for Greek and Hebrew *Strong's numbers*. If you want to use the power of English KeyLinking in coordination with the power of *Strong's numbers*, you can reset your English KeyLink to link to the *New Strong's™ Guide to Bible Words*.

#### • **Setting a KeyLink**

Right click on the word "beginning" in John 1:1 in the KJV (or any English word) and choose **Define KeyLink** from the menu that results. This will display the **Define KeyLink** dialog. Under **KeyLink Type** on the dialog, choose **Use Topic Browser**. Under **Books**, you'll notice that your **Library Browser** is reproduced, with the same icons down to the **Book level**. Use the **Scroll Bar** to scroll down to the **Languages**, then **Dictionaries**

category. Expand it by clicking on the **Category icon** () . Choose *New Strong's™ Guide to Bible Words* by clicking on it. Now click **OK**.


#### • **Using the KeyLink**

Now go back to the **View window** with your three books. Double-click (with the left mouse button) on the word "beginning." The *New Strong's™ Guide to Bible Words* should open to an article entitled "Beginning."

## How Do I Link Books Together?

*The New King James Version of the Bible* and *The New Geneva Study Bible*


Close all open windows. Open the *New King James Version of the Bible* (NKJV) and the *New Geneva Study Bible* from the **Library Browser**. Click the **Tile Vertically** button from

the main **Tool Bar** () , to arrange the two books side by side. Click on the **Link**

button () on the **NKJV Book Window**. Choose **Set A** from the resulting menu.

Click on the **Link** button on the *New Geneva Study Bible* **Book Window**. Choose **Set A** from the resulting menu. Both **Link** buttons on both windows should change to reflect the



linkage (). Now scroll up and down in the **NKJV**. Notice how the *New Geneva Study Bible* follows your every move.

You can link more than two books together. Open another Bible translation and click on the **Link** button. Choose **Set A** from the resulting menu. Now the new translation has joined the chain. Enter your favorite Bible verse into the **Go To Reference** box and watch as all three books line up on the same location.

## How Do I Take Notes?


With **NEBRL**, you can write notes in the margins of your books, or highlight them with color, just as you would in a printed book. A note can be attached to any text in your library at any location. Notes attached to a Bible verse (not a particular word in a Bible verse) can even be version independent, which means that a note attached to John 1:1 in the **KJV** can be available to all other Bibles.

#### • **Creating a Note and Using Color Highlighting**

The easiest way to create a note attached to a particular phrase is via the right mouse menu. Bring the **NKJV** and *New Geneva Study Bible* to **Ecclesiastes 12:12**. Notice that in the *New Geneva Study Bible*, there is no annotation that explicitly references **Ecclesiastes 12:12**; **NEBRL** is smart enough to find the nearest article and display it instead. In the **NKJV** text, select the phrase "Of making many books *there is no end.*" Right click in the selected text and choose **Add a Note → To Selection**. This brings up the **Note Window** (**Figure 10**). You should be able to type in the right-hand pane.

Choose a highlight color for this note by clicking on the **Color Highlighting** button



on the **Note Window Tool Bar** () and choosing a color from the resulting menu. Closing the window at this point will prompt you to save the Note. Press **Yes**. The **File Save As Dialog** will appear. Type `note1.not` into the **File name** field of the dialog. Press **OK**, and your notes file is saved. To see the highlighting produced by the note you



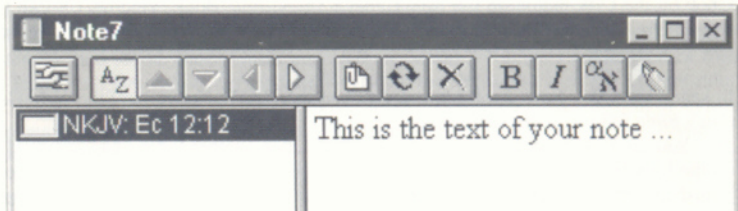


Figure 10: Taking Notes

just entered, choose File → Open from the menu. Double click on `note1.not`. See NOTES AND CROSS REFERENCES in the 2.1 *User's Guide* for complete details on using notes.

## 4 I'm Ready to Unlock Books and Try DVI!


### How Do I Add More Books to My Library?

- **Unlocking a Book or Collection**

One of the most attractive things about TUBRL is its unlimited expandability. You can add books from the CD-ROM(s) you obtained with your purchase, or from any other LLS compatible publishers. Ask your local retailer for other available LLS collections or call the toll-free number on the back of the CD case. Your library can grow as your needs change, without costly upgrades or technical headaches.

When you purchased TUBRL, you purchased a certain set of books. However, you probably didn't purchase *every* book on the CD(s). Additional books may reside on your CD(s) which are ready to be unlocked and used immediately—no shipping, no handling, no hassle.

- 1) To browse through the list of locked titles on your CD, start the Locked Book

and Collection Browser by clicking on the Unlock button (  ) on your

Tool Bar. In the left-hand pane of the dialog is an outline of all the unlockable titles on your system, set up in the same format as the Library Browser. In the right hand pane is a Description field, which shows the descriptions and prices of individual books or collections.

- 2) Click on the book or collection from the Locked Book and Collection Browser that you want to unlock, and a description appears.
- 3) Click on the Add button to select it for unlocking.
- 4) Click on the Unlock button, and the Unlock dialog appears.
- 5) Call the Unlock Hotline number provided in the Unlock dialog.
- 6) A sales representative will guide you through the rest of the unlocking procedure.

- **International Customers:** Call the dealer nearest you, from the drop-down distributor list in the Locked Book and Collection Browser (click on the Unlock button on your toolbar).

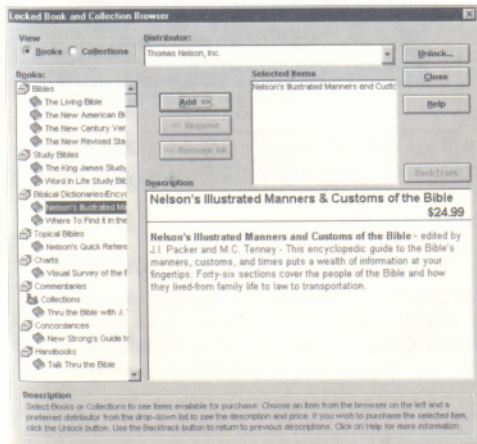
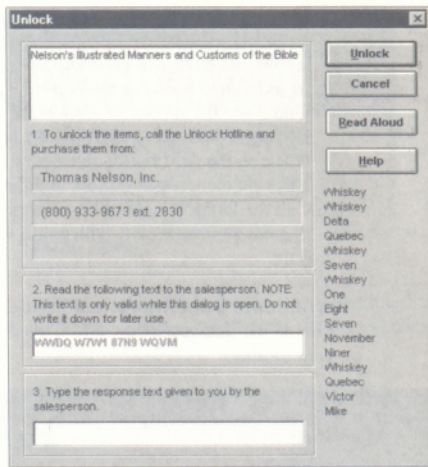


Figure 11:  
Locked Book  
and Collection Browser

Figure 12: Unlock Dialog



### Don't Forget!

Registering your NEBRL purchase will automatically enroll you in the Nelson Electronic Advantage program, and you will receive notification of special unlocking discount offers. Send your registration in today!

## Dynamic Verse Insertion (DVI)




Figure 13:  
DVI (Dynamic Verse Insertion)

The Logos Library System is not only easy to use by itself, it's easy to use with your other Windows™ applications. Use Dynamic Verse Insertion (DVI) to quickly export Bible verses directly to your word processing document.

1) Position your cursor in the Microsoft Word™ (or other similar application) document where you want to insert the verses.



2) Click the floating DVI button (  ) in the upper left corner of your screen. This will open the DVI dialog (Figure 13).

3) Click the Bible version you wish to insert verses from.

4) In the Bible Reference box, enter the ranges of verses you wish to insert into your document. Click Insert to insert the verses.

### Additional Information

More information on NEBRL can be found in the *NEBRL User's Guide*. It is included as an electronic book in all NEBRL editions. Look in your Library Browser under Documentation → *NEBRL User's Guide*. Context-sensitive help is available by selecting the Help menu at the top of your screen.

NOTES

NOTES





# THE Ultimate Bible Reference Library

The ultimate Bible study resource that will help  
you better understand and share God's Word



[www.nelsonreference.com](http://www.nelsonreference.com)  
[www.thomasnelson.com](http://www.thomasnelson.com)

## **WINDOWS® SYSTEM REQUIREMENTS**

Requires Windows® 3.1 or Windows® 95/98/00, 486-SX or higher,  
DOS 3.3 or later with minimum 8 MB RAM (16 MB RAM  
recommended), 15 megs free space on your hard drive,  
and minimum 2X CD-ROM drive.

Copyright © 2002 by Thomas Nelson, Inc. All rights reserved. 501 Nelson Place, Nashville, TN  
37214-1000. The Nelson Reference & Electronic Publishing logo is a trademark of Thomas  
Nelson, Inc. The Logos Library System logo is a trademark of Logos Research Systems, Inc.  
Windows and Windows 95/98/00 are trademarks of Microsoft Corporation.