

This list box contains a list of entries.

Existing entries may be changed by transferring them to the edit box, making the changes and reinserting the new data in the list

Depending on the page, the list may be sorted or unsorted, case-insensitive or not

Remote

This dialog can be used to select a remote computer running NTMail and allow the user to remotely configure the NTMail servers on that machine.

The CPL will only connect to the remote machine if the software version on that machine matches that of the CPL.

If the CPL applet is connected to a remote machine, files cannot be written or deleted so some functionality is lost.

A connection via a low speed modem link.

It is recommended that the following options are set as listed.

non-default Outgoing:Remote Mail Servers
disable Outgoing:Send Outgoing Mail Immediately
disable Outgoing:Retry interval

Domain Robot

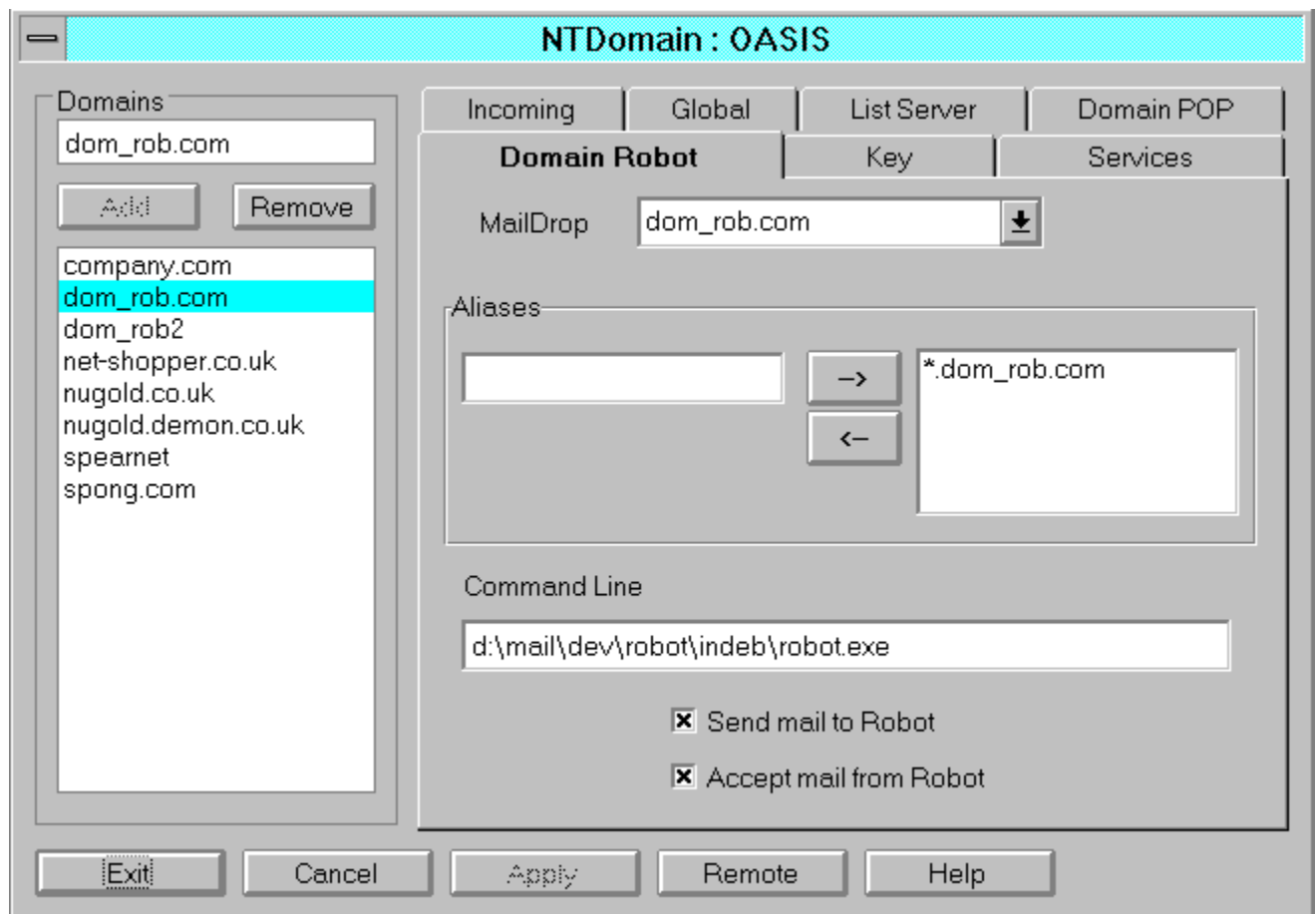
Maildrop: The name of the Domain robot account

Aliases: A list of other domains to which the Domain robot responds.

Command Line: The full path of the executable program.

Send mail to Robot: If checked, the incoming mail message is passed to the robot for processing.

Accept mail from Robot: If checked the robot can generate a new message which is then mailed as required



The Account Selection dialog allows the user to select which type of account to add.

The allowed types are:

User Maildrops

Forwarding Maildrops

Executable Maildrops

Auto Responder Maildrops

This button can be used to add text in the edit box on the left of the button to the list box on the right

this button can be used to remove a selected entry from the list box on the right of the button and to place it in the edit box to the left

Variables

NTMail will check for a sequence %command% in an information or holiday message. The sequence will be replaced with a value.

The following commands are available:

%subject% subject of incoming mail message

%from% who the message is from

%to% who the message is to

%date% date and time of the original message

%messages:maildrop-name% the number of messages currently waiting in the given POP account. The value is 0 if the account does not exist.

see also

[Subject Heading](#)

Account Type

Access Control File

This is a text file containing an ordered sequence of access control lines.

An access control line has the form:

```
access_mode email_address telephone_number [cost_code]
```

where `access_mode` is either 'A' or 'Allow' for allow access or 'D' or 'Deny' for denied access. The strings are matched independent of case.

`email_address` is a wild card email address

`telephone_number` is a wild card telephone number.

`cost_code` is an optional cost code, which will be placed in the log file with the statistics for this entry.

Pressing this button will cause the CPL applet to write any outstanding changes to the registry, and then close, returning control to the Control Panel.

The caption bar shows the name of the currently connected machine

This edit box may be used to enter text for new entries to be inserted in the associated list box, or to change existing entries.

Mail to a Fax account is sent on via Fax rather than e-mail.

An e-mail message is sent automatically in reply to anyone sending mail to this account.

Mail sent to an Executable account causes the action defined by the command line to be automatically invoked.

A Forwarding account can be used to reject mail or to forward it to alternative destinations, eg if someone has changed job.

Contents

Full Domains

Domain POP accounts

Domain Robot accounts

default.fax

The default fax template is:

-----FAX STARTS-----

From: %from%

To: %to%

Subject: %subject%

Date: %date%

%message%

-----FAX ENDS-----

Press one of these tabs to configure NTMail options and settings

Incoming

The Incoming page contains:

- The default Domain Name - this is set when the domain is added to the list of domains and can only be changed by deleting the entry from the Domains list and adding a new entry.
- An optional list of Local Domain names. The default is to include '*.company.com' where 'company.com' is the domain name.
- Provision for limiting message size to n kBytes. - If the Limit check box is not checked or the limit value is zero, then there is no limit to the allowed message size. If you wish to use this option, the recommended minimum size is 64K.
- Provision for defining a single line message to be added to every message passing through the NTMail system. This may be used to add your own customised message advertising your services. The message is limited to a maximum of 60 characters.

Outgoing

The Outgoing page contains:

- The list of Remote Mail servers is a list defining how NTMail will send outbound mail. If a '*' is used, the mail server defined in the message will be used. A list of mail servers may be defined to allow redundancy in the case that mail must be delivered (for example, on a dial-up line).
- The Check button will attempt to reach the specified mail server. If the mail server cannot be reached, then it will fail.
- An Explain button that gives an explanation of the action if mail is sent to the selected entry in the Remote Mail Server list. The action for '*' is to send mail to the address given in the email message.
- If the 'Send Outgoing Mail Immediately' option is selected, NTMail will immediately send outbound mail when it arrives at the server. This option should not be checked for dial-up connections..
- The retry interval specifies how often NTMail will try to send mail to servers that cannot be reached. The default interval is 12 minutes. This should not be set for dial-up connections.
- Provision for sending a warning if mail could not be sent. If the 'Send warning' check box is not checked or the limit value is zero, then the default retry interval is 24 hours.
- Provision for setting a delay period, after which unsent mail is returned to the sender. If the limit value is zero, then the default delay is 72 hours.
- Provision for changing the maximum number of simultaneous outgoing messages - the allowed range is 5 to 128, with a default of 20

Post Office

The Post Office page contains:

- Provision for enabling (default) or disabling the Password server, which can be used by Eudora.
- Provision for enabling (default) or disabling the FINGER server, which will display the number of messages waiting for a user.
- Provision for changing the maximum number of simultaneous POP clients - the allowed range is 5 to 128, with a default of 20

User Maildrops

This page is used to Add, Remove or Change User maildrops.

The User Name field contains a list of existing Users. When one is selected, the Password and Alias entries are filled. If the user has a holiday maildrop rather than a pop maildrop, then the Holiday message is also filled.

The user can be removed by pressing the Remove button.

Toggling the Holiday message check box causes the maildrop type to change from pop to holiday or from holiday to pop.

If a holiday maildrop is changed to a pop maildrop, then the holiday message is cleared. If the changes are applied using the Apply button, the the original message is lost.

The Holiday message may contain a subject heading and variables. If a subject is present, the subject text will be used in the description field of the Accounts List.

If either of the selected fields is changed, the Add button is enabled, allowing the user to add the changed entry - note if the user name is not changed, the effect is to replace the existing user.

If the Add or Remove buttons are used, the Accounts list is updated accordingly, but the Registry is only updated when the Apply button is pressed

Accounts List

This page has a list of all the known maildrops. The four buttons at the head of the list can be used to sort the list - either by alias, by type, by user or by description.

New maildrops are created using the Add button. This takes the users to the Account Selection dialog. Once the user has selected the type of maildrop, the appropriate maildrop page is activated.

Existing entries can be edited by double-clicking on the appropriate line. This causes the appropriate maildrop page to be filled with the data for that maildrop.

The Remove button can be used to remove a selected entry. An entry may be selected by means of a single click or by dragging the focus rectangle.

see also:

User Maildrops

Forwarding Maildrops

Executable Maildrops

Auto Responder Maildrops

Forwarding Maildrops

This page is used to Add, Remove or Change Forwarding maildrop.

The Maildrop field contains a list of existing Forwarding maildrops. When one is selected, the Reject or Forward fields are filled - including the list of addresses for the forward mode.

The maildrop can be removed by pressing the Remove button.

If the Reject button is selected, the maildrop is converted to a moved maildrop.

If the Forward button is selected, the maildrop is made converted to a forward maildrop, and a list of one or more email addresses must be supplied.

If either of the selected fields is changed, the Add button is enabled, allowing the user to add the changed entry - note if the maildrop is not changed, the effect is to replace the existing maildrop.

If the Add or Remove buttons are used, the Accounts list is updated accordingly, but the Registry is only updated when the Apply button is pressed.

fax template file

This file defines the layout of the fax page. The default file for new templates is the file 'default.fax' in the NTMail base directory.

The following parameters are supported:

%subject%	The message subject.
%from%	The complete from line
%from-email%	Email address in the From: clause
%from-user%	User's name if it is in the From: clause, otherwise email-address
%to%	
%to-email%	Email address in the to clause
%to-user%	User's name if it is in the To: clause, otherwise email-address
%date%	
%cc%	
%message%	the entire message body
%header%	the entire message header
%mailbox:box-name%	

Auto Responder Maildrops

This page is used to Add, Remove or Change Auto Responder maildrops.

The Maildrop field contains a list of existing Executable maildrops When one is selected, the corresponding Message field is filled.

The message may contain a subject heading and variables. If a subject is found, the subject text will be used in the description field of the Accounts List.

If either of the selected fields is changed, the Add button is enabled, allowing the user to add the changed entry - note if the maildrop is not changed, the effect is to replace the existing maildrop

If the Add or Remove buttons are used, the Accounts list is updated accordingly, but the Registry is only updated when the Apply

Executable Maildrops

This page is used to Add, Remove or Change Executable maildrops.

The Maildrop field contains a list of existing Executable maildrops When one is selected, the corresponding Command Line field is filled.

If either of the selected fields is changed, the Add button is enabled, allowing the user to add the changed entry - note if the maildrop is not changed, the effect is to replace the existing maildrop

If the Add or Remove buttons are used, the Accounts list is updated accordingly, but the Registry is only updated when the Apply button is pressed.

Log Actions

The Log Actions page contains:

- Provision for tuning the logging actions for POP, POST and SMTP services. The default action is to log all failures for each service.
- You may also elect to log statistics of all messages that pass through the SMTP server.

Key

This page shows the current software key, along with a description of the facilities enabled by this key.

If the system key is invalid when the CPL applet is activated, the user must enter a valid key in order to proceed.

Domain Alias List

This page has a list of domains and their associated aliases. The two buttons at the head of the list can be used to sort the list - either by domain or by alias.

New maildrops are created using the Add button. This takes the user to the [Domain Alias](#) page.

Existing entries can be edited by double-clicking on the appropriate line. This causes the [Domain Alias](#) page to be filled with the appropriate data.

The Remove button can be used to remove a selected entry. An entry may be selected by means of a single click or by dragging the focus rectangle.

see also:

[Domain Alias](#)

Domain Alias

This page is used to Add, Remove or Change Domain Alias entries

The Domain field contains a list of existing Domains. When one is selected, the Destination Machine edit box is filled with the name of the Destination Machine to be used for the given Domain.

The alias can be removed by pressing the Remove button.

If either of the selected fields is changed, the Add button is enabled, allowing the user to add the changed entry - note if the alias is not changed, but the domain is, then the effect is to replace the existing alias.

If the Add or Remove buttons are used, the Domain Alias list is updated accordingly, but the Registry is only updated when the Apply button is pressed

This account is used for normal e-mail. A holiday message can be setup to be used as a reply should someone be temporarily unavailable.

Domain Status

Services

This page allows the user to start, stop or update selected services.

On leaving the CPL, if one or more services are stopped, the user will be asked if they should be re-started.

Configuration Pages

Full Domain: Incoming, Global, List Server.

Domain POP: Domain POP.

Domain robot: Domain robot

.

Domains

The upper edit box contains the name of the currently selected full Domain, Domain POP account or Domain robot.

New Domain are created by entering the domain name here and pressing the 'Add' button. A dialog box appears asking the user to select the type of Domain to be added

Full Domain

Domain POP account

Domain robot.

After selecting the required type, the user can enter the configuration data on the relevant pages of the Domain CPL.

A domain can be deleted by selecting it in the list of Domains and pressing the 'Delete' button. Once this has been done, the Registry entries and relevant directories and files are removed.

Note the root full Domain set (ie those in the NTMail Base directory) cannot be removed.

The Apply button is activated if there are outstanding changes on one or more pages.

Pressing this button forces all outstanding changes to be written to the Registry.

It is not necessary to apply all changes before leaving one page for another.

A user maildrop may have one or more aliases.

Auto Responder, Executable, Fax and Forwarding maildrops have just one alias.

The type field may be one of the following:

- executable
- fax
- forward
- holiday
- info
- list
- list manager
- moved
- pop
- robot

The user field contains the actual user name for the maildrop. In the case of pop or holiday maildrops, where the user may have aliases, there will be one entry per alias.

The description field gives further information about a maildrop.

Fax maildrop: either the telephone number to be dialled or the name of the fax access control file.

Forward maildrop: the email address where mail is to be forwarded.

Holiday maildrop: either the subject of the holiday message or the name of the holiday message file if no subject could be found.

Info maildrop: either the subject of the information message or the name of the information message file if no subject could be found.

Robot maildrop: the command line for the executable.

Subject Heading

NTMail will allow you to change any elements of the the mail message header. To change the subject you would set the first line to:

-Subject: new subject text

It is also a good idea to set the from field using:

-From: null@company.com (User Name)

see also

[Variables](#)

Pressing this button leads to this file

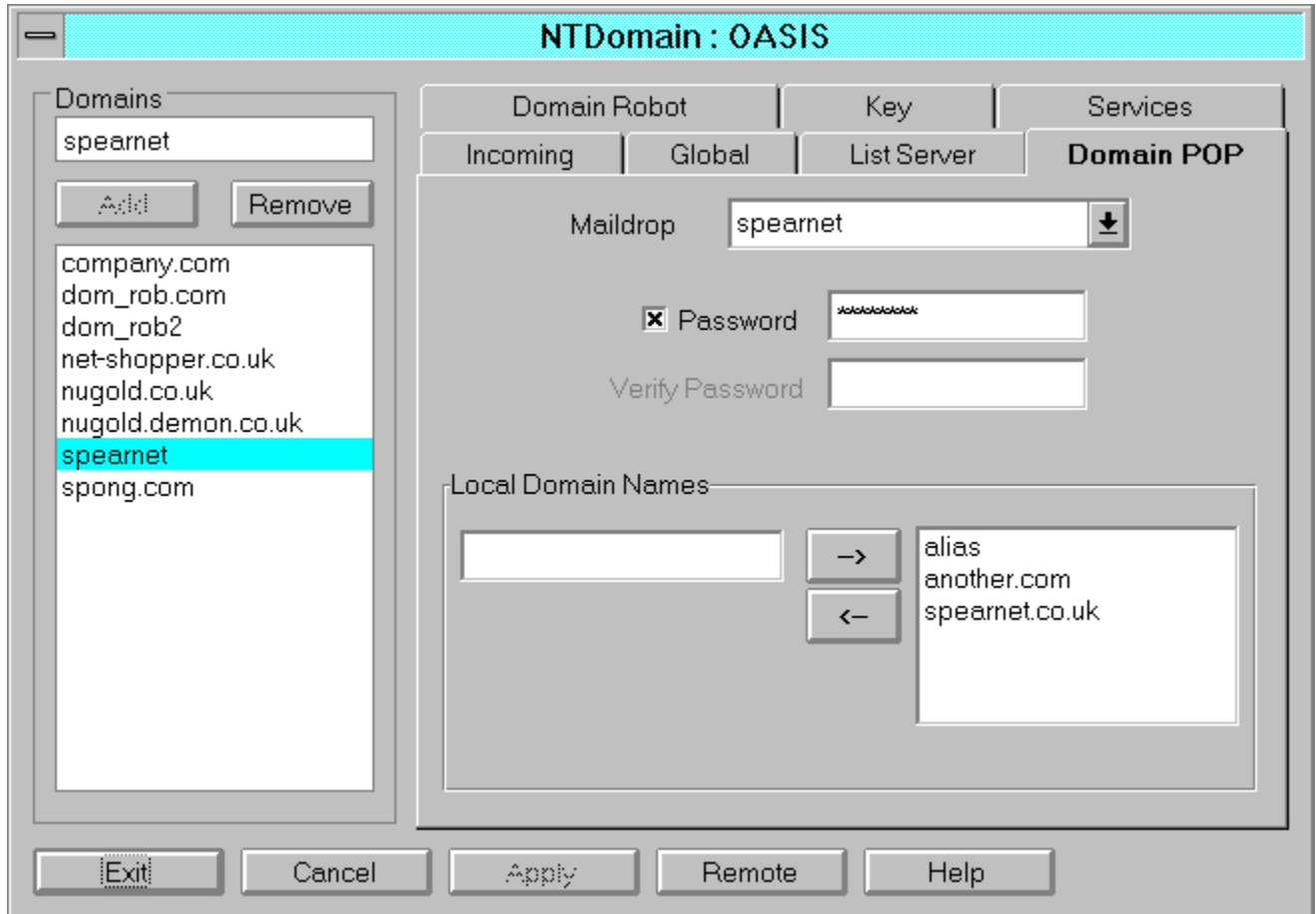
Pressing this button will cause the CPL applet to discard any outstanding changes and to close returning control to the Control Panel

Domain POP

Maidrop: This is the name of the Domain POP account.

Password: This is the password that is used to control access to the Domain POP account

Local Domain Names: A set of additional domain names. Mail sent to the domains will be routed to this Domain POP account.



Global Settings

- Company Fax Name: This is the name used by LGFax on the fax pages.
- Postmaster mail address: This is the address of the domain Postmaster.
- Provision to set a password for the domain Postmaster account.
- Provision to log all messages passing through the server. The messages are stored in the domain MesLog directory.
- Options for handling mail to an unknown user. The mail can either be rejected, sent to a specified account (typically the root or Postmaster account) or redirected to another mail server.

List Server

These options are enabled in the NTMail key support the NTList option.

- Provision to specify the account name and password of the All List. This list can be used to send messages to all local users.
- Provision to create a daily archive of all mail addressed to the list.
- Provision to use one file for all members of the list. If not enabled, a file is used for mail to each member.
- Provision to specify the action to be taken when mail bounces back to the list. The options are to ignore the mail, to suspend the user responsible from the list or to remove the user from the list.

Full Domains

The following pages are used to configure NTDomain full Domain entries

[Incoming](#)

[Global](#)

[List Server](#)

The screenshot shows the 'NTDomain : OASIS' configuration window. On the left, a list of domains is shown with 'company.com' selected. The main area is divided into tabs: 'Incoming', 'Global', 'List Server', and 'Domain POP'. The 'Incoming' tab is active, showing 'Domain Name' as 'company.com' and 'IP Address' as '200.200.200.200'. Below this, there is a section for 'Other Domain Names' with a list containing '*.company.com'. At the bottom, there are checkboxes for 'Limit message size to' (set to 0 KBytes) and 'Add X-Info'. The window has standard buttons: Exit, Cancel, Apply, Remote, and Help.

Domain Robot	Key	Services	
Incoming	Global	List Server	Domain POP

Domain Name: IP Address:

Other Domain Names:

<input type="text"/>	→	<input type="text" value="*.company.com"/>
	←	

Limit message size to KBytes

Add X-Info

Exit Cancel Apply Remote Help

