

**(c) 1997-1998 M.Pacchiarotti - JimjamsAbsolutely On-
lineABSONyesyesyesyesyesTRUEyesyes07/03/98**

Absolutely On-line

[Introduction](#)

[Overview](#)

[F.A.Q.](#)

[Known Problems](#)

[Licence](#)

[Registration](#)

Help file produced by **HELLLP!** v2.7 , a product of Guy Software, on 07/03/98 for Mario Pacchiarotti.

The above table of contents will be automatically completed and will also provide an excellent cross-reference for context strings and topic titles. You may leave it as your main table of contents for your help file, or you may create your own and cause it to be displayed instead by using the I button on the toolbar. This page will not be displayed as a topic. It is given a context string of `__` , but this is not presented for jump selection.

HINT: If you do not wish some of your topics to appear in the table of contents as displayed to your users (you may want them ONLY as PopUps), move the lines with their titles and contexts to below this point. If you do this remember to move the whole line, not part. As an alternative, you may wish to set up your own table of contents, see Help under The Structure of a Help File.

Do not delete any codes in the area above the Table of Contents title, they are used internally by HELLLP!

Introduction

I use a nice local ISP (Internet Service Provider) to connect Internet from my home computer, but they configured their modems to drop the line after five-ten minutes inactivity.

Sometimes, when I'm thinking about a reply to a user, or while reading an interesting article on the WEB, or simply when I go down to get something to drink, my ISP drop the line and I have to reconnect.

Many people known how annoying it is.

Absolutely On-line periodically polls the line (about one time a minute) performing the minimum activity required to avoid line drop by ISP.

This version should work with AOL connection too, using the dialog autoreply feature, but I haven't tried it, so test the program for a while before to buy.

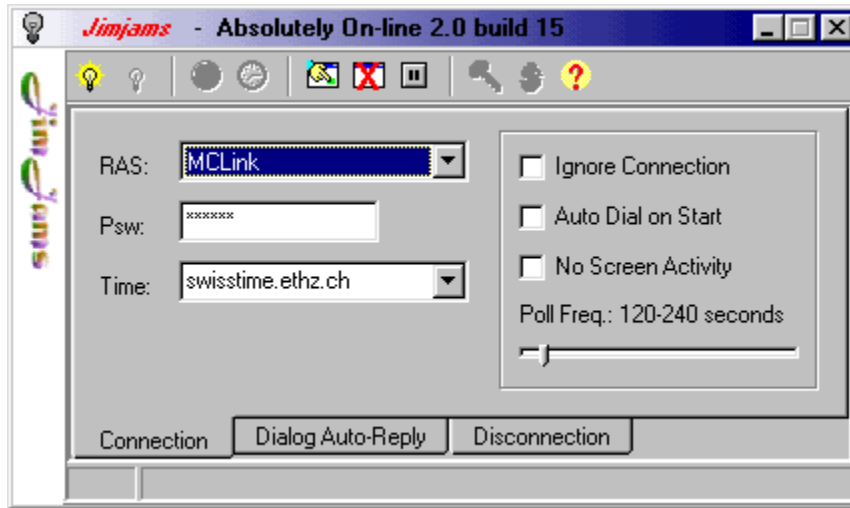
While developing it I added also two simple functions, the first to automatically dial and connect to your RAS ISP (optionally remembering your password for you); the second to set the system clock using your favorite Internet time server.

The dialog autoreply feature is also useful to get rid of annoying dialog pop-up.

This version has an option to automatically drop the line after a fixed amount of time. This to avoid to be on-line forever (so you can leave your computer while it download the email or a newsgroup fixing a maximum time to stay online).

Good work....

Overview



Absolutely On-line is really easy to use, after you started it the first time, you need to choose your default RAS services selecting it from the RAS combo box (if you use only one RAS provider then it will be automatically selected).

Some users will not need to use a RAS connection because their ISP may have a special client software to connect.

Optionally you can provide a password associated with that provider. Abson will remember the password for you.

If you want to use the time set function then insert a Time Server name in the Time combo.




Check “**Auto dial on start**” if you want to dial your ISP immediately when you launch the program.





Check “**No Screen activity**” if you use a screen saver, to avoid generation of screen activity detected by your screen saver.

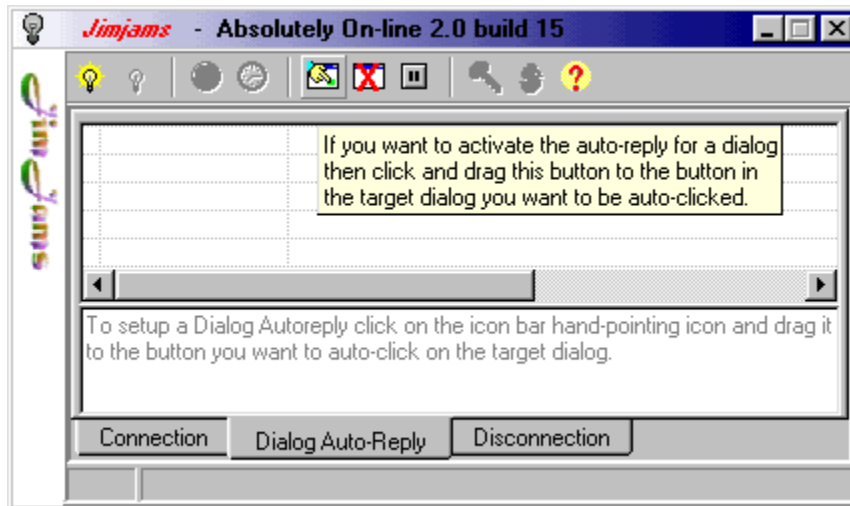
If you connect to your ISP by yourself using some kind of RAS enhancer or a dedicated client, then you can select “**Ignore Connection**” to avoid conflicts with your software. This way it starts polling immediately.

You can change the poll frequency modifying “**Freq**” (seconds).


All settings will be saved.

-  Use the “ **Light-On** ” icon to connect.
-  Use the “ **Light-Off** ” icon to disconnect and hang-up the line.
-  Use the “ **Green Led** ” icon to start/stop **Absolutely On-line** polling.


-  Use the “ **Clock** ” icon to connect Time Server and set the system time.
-  “ **Key** ” icon is used to insert registration key.
-  “ **Dollar** ” icon is used to connect to registration site or to activate `register.exe`.
-  “ **Help** ” icon will start this help.




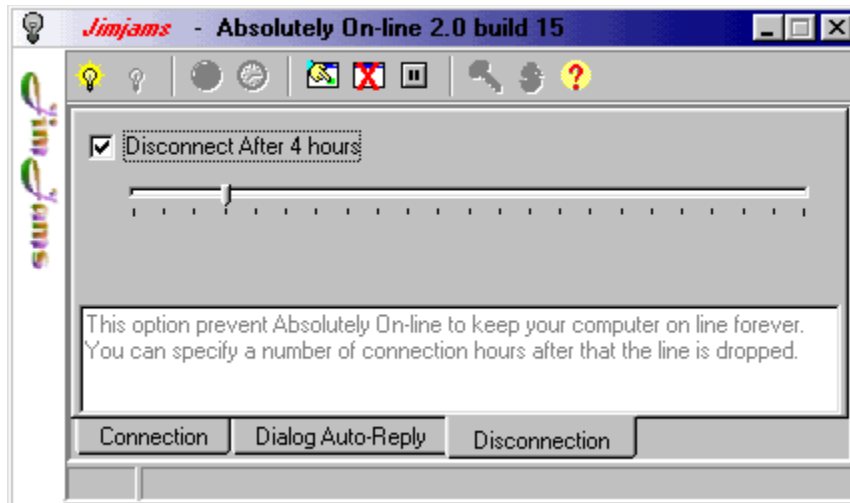
If your ISP use a special client software may be it will pop-up periodically with a dialog asking you to confirm you want be on-line. Absolutely On-line has a new feature to get rid of this dialogs.

To activate this feature you must wait the dialog to pop-up, now, instead to reply it, go to Absolutely On-line window, select “Dialog Auto-reply” tab, then click and drag this icon  dropping it on the button you need to click in the pop-up dialog.

Absolutely On-line should now auto-click that dialog each time it will pop-up again. You can add as many autoreply as you need.

You can delete an entry from the auto-reply list selecting it and clickint the **Delete** button 

You can suspend the auto-reply feature clicking the **Pause** button  Click it again to reactivate the feature.



Finally you can select a maximum number of hours for your connection. When Absolutely On-line detect the connection is active past that amount of hours, it will automatically drop the line.

I use this setting to avoid to stay connected for ever if I forgot to drop the line manually.

There is no more to speak about, **Absolutely On-line** is a simple program.

Licence

License Agreement

By installing this software you accept the following license agreement.

The software is distributed through a means known as Shareware. Shareware is not a type of software, but a means of distribution. **Shareware is not free software.** You are granted a right to use the software for an evaluation period of 31 days. If you continue to use the software after the evaluation period you are required to either register or remove the software from your computer.

The software is considered *registered* once the author has received the appropriate payment for the software and the "registration ID" has been entered to the program.

Your registration ID code is for your personal use only. You may not publish your registration ID code or distribute it in any way nor may you distribute the software once it has been registered. Distributing your registration ID is illegal and is no different from distributing illegal copies of the registered software.

You may freely distribute the SHAREWARE (not registered) version provided that

- you distribute the original ZIP file containing all the original files
- it's clearly stated that the software is Shareware

Shareware distribution systems can distribute the SHAREWARE (not registered) version in their CD-ROMs.

The software and documentation are copyrighted.

Warranty

This product comes with the ultimate warranty. You can try it, use it and test it 30 times without spending a cent. If you are satisfied with the product (as I hope you will be) then register. If you are not satisfied with the product simply remove it from your computer and that's it.

Disclaimer

THE AUTHOR DISCLAIMS ALL WARRANTIES RELATING TO THIS SOFTWARE WHETHER EXPRESS OR IMPLIED, INCLUDING BUT NOT LIMITED TO ANY IMPLIED WARRANTIES OF MERCHANTABILITY AND FITNESS FOR A PARTICULAR PURPOSE, AND ALL SUCH WARRANTIES ARE EXPRESSLY AND SPECIFICALLY DISCLAIMED. NEITHER THE AUTHOR NOR ANYONE ELSE WHO HAS BEEN INVOLVED IN THE CREATION, PRODUCTION, OR DELIVERY OF THIS SOFTWARE SHALL BE LIABLE FOR ANY INDIRECT, CONSEQUENTIAL, OR INCIDENTAL DAMAGES ARISING OUT OF THE USE OR INABILITY TO USE SUCH SOFTWARE EVEN IF THE AUTHOR HAS BEEN ADVISED OF THE POSSIBILITY OF SUCH DAMAGES OR CLAIMS. IN NO EVENT SHALL THE AUTHOR'S LIABILITY FOR ANY DAMAGES EVER EXCEED THE PRICE PAID FOR THE LICENSE TO USE THE SOFTWARE, REGARDLESS OF THE FORM OF CLAIM, THE PERSON USING THE SOFTWARE BEARS ALL RISKS AS TO THE QUALITY AND PERFORMANCE OF THE SOFTWARE. SOME STATES DO NOT ALLOW THE EXCLUSION OF THE LIMIT OF LIABILITY FOR CONSEQUENTIAL OR INCIDENTAL DAMAGES, SO THE ABOVE LIMITATION MAY NOT APPLY TO YOU.

Registration

Registering **Absolutely On-line** you help Jimjams and the Shareware system. You gain also email support directly from the author, free upgrades for at least one year and discounts over other Jimjams shareware.

Registration fee for **Absolutely On-line** is **\$15**, if you are interested in buying multiple copies or site license please check the price using `register.exe` program.

A special discounted price is available to Jimjams customers who purchased another Jimjams product in the past, check it using `register.exe`.

To register you can use the attached `register.exe` program, or use the on-line internet secure registration pages starting from:

<http://order.kagi.com/?JJ&SI>

After you received the key you should click on the Key icon to type in your name and the unlock code.

You can find the latest version of this software at our internet site:

<http://www.jimjams.com>

Author contact:

Mario Pacchiarotti
Development & Support, Jimjams
mario@jimjams.com
jimjams@mclink.it

Known Problems

There are no known problems or bugs.

F.A.Q.

- 1 **When I close Absolutely On-line it drop the line. How can I keep the line on, while closing it?**

Absolutely On-line drop the line in exit if you used it to start the connection. There is no reason to close the program while you stay connected, because you can disable polling and auto-reply.

Still if you want to close the program remaining connected you have to connect by hand and only after the connection is established you have to start **Absolutely On-line**.

- 2 **When Absolutely On-line sincronyze time with a remote Time Server how accurate is it?**

It's not a Rolex, but it's good if you don't need an absolute precision. Error can vary, but should be very little.

