

Shutdown v1.0

Copyright ©1994, Limelight Media, Inc. All rights reserved.

Introduction

What is Shutdown?

About Limelight Media, Inc.

Using Shutdown

Using the Interface

Using Command-Line Parameters

About Limelight Media, Inc.

Limelight Media, Inc. is a multimedia publishing company which was founded to produce extremely high-quality titles at a very reasonable price. Our company hires only the best programmers, with outstanding skill and unsurpassed dedication to our cause.

If you have any question about our products or suggestions for new products, please call us. We are always eager to talk about the industry and potential opportunities.



Limelight Media, Inc.
P.O. Box 3536
Terre Haute, IN 47803
(812) 234-8800
FAX (812) 238-2336

What is Shutdown?

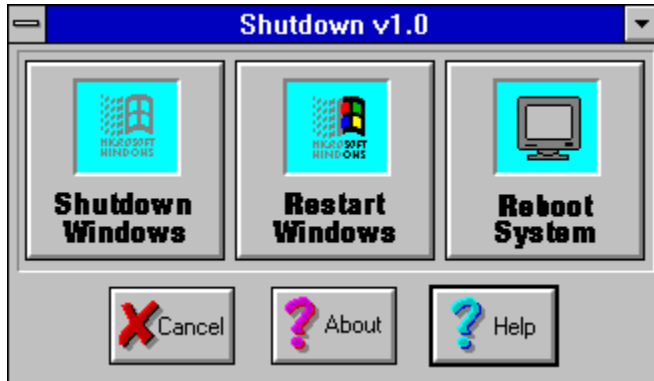
Shutdown is a utility which allows you to exit Windows, restart Windows, and reboot your system with ease.

Shutdown contains an effective and easy-to-use interface, but can be used just as effectively with command line-parameters. For example, you can configure a Program Manger icon to restart Windows simply by double-clicking it. Or you can reboot your system, just as easily.

Shutdown and its accompanying documentation is the Copyrighted property of Limelight Media, Inc., and is not to be distributed under any circumstances without prior consent of Limelight Media.

Using the Interface

The Shutdown interface is very easy to use. Simply click on one of the three Command buttons, the Exit button, or either of the two Information buttons.



The buttons work as follows:

Command Buttons

- Shutdown** Shuts down all applications, and exits Windows
- Restart** Same as Shutdown, but restarts Windows
- Reboot** Same as Shutdown, but reboots your system

Exit Button

- Exit** Closes only the Shutdown application

Information Buttons

- About** Shows the About dialog box
- Help** Displays this help document

Using Command-Line Parameters

Shutdown v1.0 supports four command line parameters. Three of the parameters perform the same functions as the Command Buttons, while the fourth is a verification switch.

The parameters are:

Command Parameters

/SHUTDOWN Shuts down all applications, and exits Windows

/RESTART Same as Shutdown, but restarts Windows

/REBOOT Same as Shutdown, but reboots your system

Option Parameters

/VERIFY Forces Shutdown to verify all actions before performing them.

To use the command line parameters, simply edit Shutdown's Program Manager icon. For example, if you want Shutdown to verify all actions before performing them, you could edit the Shutdown icon to read as follows:

