

Welcome to The *Word-Wise Web Writer*™

(Version 2.01)



(Captain Quad Dub, our mascot spinning his magical Web)

The Word-Wise Web Writer is brought to you by Aspiring Software Add-Ins (creators of SCRNPPO, the screenplay template, TELEPRO, the teleplay template and UTILPRO, the Utility Toolbar Template.)¹

What is the Word-Wise Web Writer?

WWWPRO Version 2.0 (hereafter occasionally referred to as W⁴2 or Web Writer) is a Word for Windows 6 (or higher) shareware template for creating and editing HTML (HyperText Markup Language) documents for your web pages. Version 2 is more powerful and flexible than ever, though it is not a standalone HTML editor. If you are familiar with earlier versions (1.0, 1.1 or 1.2) and would like to find out what's *new*, skip down to below.

The ultimate goal of W⁴2 is to simplify the process of creating your web pages by keeping you in a comfortable interface, namely Word for Windows, resulting in a minimized learning curve. Second, the design of W⁴2 was (and will continue to be) directed toward a simplified and 'guiding hand' approach, using many dynamic dialog boxes and sample text. W⁴2 will cut through the thorny bush of HTML, HTML+, HTML 3.0, Netscape or MS Internet Explorer extensions, etc., giving you just what you — the web author — need to meet your everyday HTML homepage writing quota.

Web Writer intentionally does not come preloaded with its own menu and bewildering array of sub-menus and sub-sub menus. Instead, you'll find the tools you need most right on the colorful "WWW HTML" toolbar. Sounds simple, doesn't it.

¹ Visit *Aspiring Software Add-Ins* on the internet at <http://members.aol.com/jackwpass/aspire.html> or contact Aspiring via email at jackwpass@aol.com with questions, comments or suggestions..

Let me briefly explain the ‘guiding hand’ approach. In order to simplify the process of getting your HTML code down on paper—to use an antiquated metaphor—W⁴2 incorporates dynamic dialog boxes to guide your selections, sometimes with mini-templates within the template that show you just where to put your text in the midst of the bewildering array of HTML tags.

Yet another example of the ‘guiding hand,’ well, common sense actually, is that some toolbar buttons combine similar functions. For instance, each of the six heading levels can be selected from one button instead of cluttering up the screen and confusing you with six buttons labeled: H1, H2, H3, H4, H5, H6. That’s a lot of screen real estate just for heading levels and frankly, just a little redundant. Instead, with W⁴2 you click the sole Level Headings button, select the heading level you want, type in the heading text and you’re done.

Finally, the Web Writer incorporates a WYSIAWYG (sic) approach to help you visualize your page while you create it.

What the heck is WYSIAWYG?

No, that’s not a typo. W⁴2 walks the line between WYSIWYG (What You See Is What You Get) and WYSIAWYG (What You See Is **Almost** What You Get.) Headings (from Level 1 down to Level 6) appear as large text in proportion to the level. The style for HTML code (style name logically called HTMLCode) is blue and with the flip of a virtual toggle switch, i.e., button, you can hide it. Additionally, your linked text (Style = ?? Anyone? That’s right, LinkText) is green so that it stands out when you’re in development: you’ll know which words are your anchors to your other HTML pages, external sites, etc.

A Text Editor By Any Other Name

Let’s be frank, if you know HTML you can get the job done with a basic text editor. Although this is not recommended for long periods of time if sanity is part of your recommended daily mental-health regimen. And it certainly won’t be pretty.


However, if you don’t want to worry about getting the exact syntax right (when you can remember it!) for all those many, many HTML tags, and if you like the ability to hide or display your HTML code at will, and if you want to see linked anchor text pop out of all those jumbled <'s and >'s along with your enlarged (naturally) headings, and if you want to know—without scratching your head while you flip through that reference book—just where to put *your* text in the middle of all that code, well then the Word-Wise Web Writer might just be the answer.

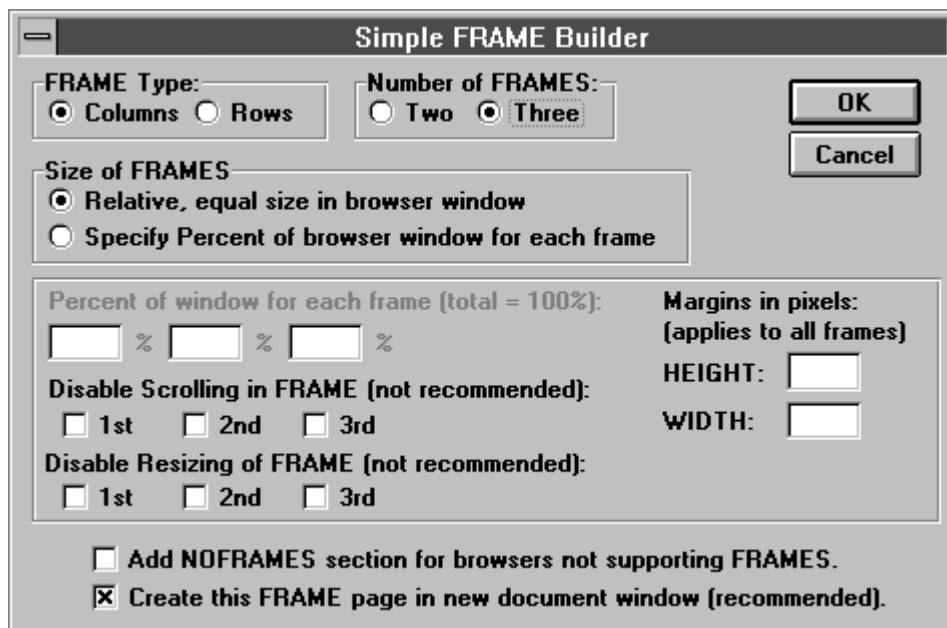
What's New in 2?

The Word Wise Web Writer Version 2.0 features a dramatic overhaul of the existing interface — virtually every toolbar function was thoroughly revamped. Additionally, the Web Writer now includes built-in support for many new HTML features, including Netscape Navigator and Microsoft Internet Explorer extensions. Under the hood of Version 2 are over 50 pages of WordBasic macros!

NEW FEATURES:

Frames Support

Netscape Navigator 2.0 Frames support accessed through two new toolbar buttons:  The first brings up the following Simple FRAME Builder which will, by default, create a new document based on the Web Writer template and set up your FRAMESET tags with the options you choose from this dialog. The second toolbar button lets you set up a target tag to update your individual frames.



The image shows a dialog box titled "Simple FRAME Builder". It contains several sections for configuring frames:

- FRAME Type:** Radio buttons for "Columns" (selected) and "Rows".
- Number of FRAMES:** Radio buttons for "Two" and "Three" (selected).
- Size of FRAMES:** Radio buttons for "Relative, equal size in browser window" (selected) and "Specify Percent of browser window for each frame".
- Percent of window for each frame (total = 100%):** Three input fields with percentage signs.
- Margins in pixels: (applies to all frames)** Input fields for "HEIGHT:" and "WIDTH:".
- Disable Scrolling in FRAME (not recommended):** Checkboxes for "1st", "2nd", and "3rd".
- Disable Resizing of FRAME (not recommended):** Checkboxes for "1st", "2nd", and "3rd".
- Options:** Checkboxes for "Add NOFRAMES section for browsers not supporting FRAMES." and "Create this FRAME page in new document window (recommended)." (checked).
- Buttons:** "OK" and "Cancel" buttons.

Fixed Background & Document Margins

Under the revised BodyElements toolbar button you'll find support for Internet Explorer's Fixed Wallpaper/Background as well as document Top & Left Margins.

Sound and Video

Web Writer now lets you add Internet Explorers Video and Background Audio tags.

Word Table Conversion

Got a Word table you'd like converted to the HTML format, complete with all the <TR>, <TD>, etc. tags. Simply cut & paste the table into your page document, click anywhere in the table and click on the SimpleTableBuilderConverter button. The table Builder supports optional Caption and Border tags, along with Header and Data Rows; the table Converter supports Caption and Border, along with data rows.

Client Side Image Maps



Add your own clickable image map with this Netscape tag.

Marquee



Add a scrolling banner with this Internet Explorer extension.

IMPROVED FEATURES:

Anchor Links

New dynamic dialog walks you through your URL and Linked text entry. Now separate support for images linked to http and ftp sites.

Bullets And Numbers

Combined on one dialog, adds support for List headers. Enter up to 6 list items right in the dialog. (Definition List similarly enhanced.) You now can select Netscape bullet and number TYPES for your lists. (e.g., A, B, C... i,ii,iii for numbers... or circles, squares and disks for bullets.)

Horizontal Rules with Netscape Extensions.

Specify horizontal rule widths in pixels or percentage of visible browser window, change their alignment, even lose the 3D effect if you want.

Image Tag

Now features a checkbox for the ISMAP tag, as well as support for HEIGHT and WIDTH elements. (Note: supplying HEIGHT and WIDTH for all your page graphics substantially speeds the loading of your page!)

Address

Enter up to 5 address lines in the dialog box, the
 tags will be entered after each line for you.

Get Big or Small

With these additional HTML 3 Common Text Attributes.

Paragraph Extensions

Align, specify wrapping or clearing attributes with the container style HTML 3 paragraphs; or stick with the old plain ones.

Special Characters And Symbols

Now supports the [™] character and features a WYSIWYG display of foreign characters.

Internal Links

More intuitive now with a dynamic dialog box.

View & Hide HTML

Both features now on a one button toggle switch.

The PRICE!

Version 2.0 comes with a price cut as well, making this powerful Word HTML template an even better offer. The original version carried a shareware registration fee of only \$9.95 + 2.00 S/H. The price for Version 2.0 has been cut to \$8.50 + S/H for a miraculously affordable total of \$10.50. Additionally, registered users receive even more HTML support. See the **Benefits of Registering** below. (If you are a registered owner of Version 1.0-1.2, relax, you'll get your copy of Version 2.0 for free, don't even sweat the shipping and handling charges.)

WWW Program & Version Notes

Working with the Word-Wise Web Writer: Copy the WWWWPRO.DOT template into your Word Template directory. Then do a **FileNew**, type in a file name and base the document on WWWWPRO.DOT. (Registered Users: if you have an existing HTML document in text format that you'd like to import and convert to Web Writer's styles, start a new document based on WWWWPRO.DOT, then select everything and delete it. Next, open your text html document in another window (automatic), select it all and bring it into the WWWWPRO blank document using cut/copy (CTRL-X or CTRL-C) and paste (CTRL-V). Run the ConvertToW4Styles macro — there will be a pause while the conversion happens (screen updating is off) — and all your tags will now be in the HTMLCode style; all linked text will be in LinkText style and everything else will be in UserText style. The converted does not attempt to apply bold, italics, font sizing, etc to converted HTML documents, although future versions may.)

HTML documents must be saved in text mode. However, you'll also want to retain all the benefits of the Word for Windows styles, color coding, font sizing, etc. Version 1.1 of the Word-Wise Web Writer smoothed the process of saving your document in HTML (text only) format with the Audit and Save as HTML toolbar button. This goes through a multi-step process to (1) remove any curly quotes, (2) count the number of single and double quotes (you'll want an even

number of each), (3) check to see if your >'s and your <'s are equal in number, then it (4) checks to see if you've already saved your document in the Word DOC format (if not, you're prompted to do so), and if you have (5), your document is then saved as HOMEPAGE.HTM in text only with line breaks. You will no longer be prompted to save the document yet again — or risk losing formatting. The default saved text name (HOMEPAGE.HTM) can then be changed through regular file management means. [Note: if you are working with several HTML documents at once, be sure to close and rename each before you audit & save the next using the toolbar button. Optionally, you can manually save them in text format after you've saved a Word version with the DOC extension.] You'll always want to have both formats saved/synchronized: Word DOC format (for the WYSIAWYG coding) and HTM (text only with breaks.) Remember: web browsers will be totally confused if you feed them the DOC file and not the Text Only HTM file. (Note: Word for Windows 95 users can change the default htm name to use the full HTML extension for their Text Only versions.)

Fixing Style Snafus: If you add your own codes or accidentally change any styles, the only functional problem will be if you entered incorrect/incomplete HTML syntax. HTML Code entered without the appropriate style will simply not 'disappear' when you click the Toggle HTML Tag Viewing. This will become apparent if you use this feature. Simply highlight the code and select the correct style from the style drop down list on the formatting toolbar.

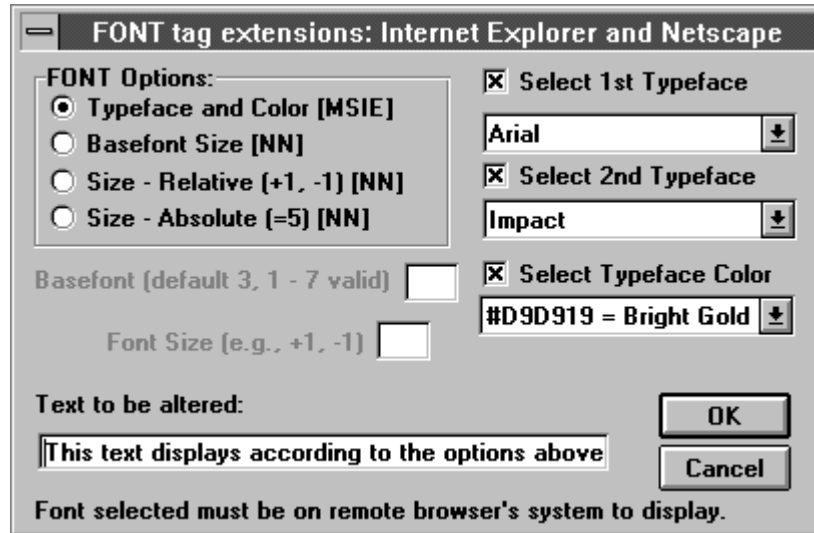
Table Notes: The table Converter does not, at this time, support a header row. If your table has a header row, simply run the conversion then replace the first rows <TD> and </TD> tags with <TH> and </TH>. Also, the Converter isn't smart enough to figure out ROWSPAN and COLSPAN situations. For best results: you should have the same number of columns in each row. (Valid table sizes — to start off the converter — would be 3x2, 4x8, 10x20, etc. You should not have 3 cells in one row, 5 in another row and seven in yet another row. Browser results may vary. A tiny bug in the Converter displays the CAPTION text in HTML tag format, meaning your caption text will vanish if you hide HTML tags. You can fix this by selecting the text and choosing FormatStyle, UserText... or select UserText from the dropdown Style list on the Word formatting toolbar. Screen updating is turned off during the conversion.

FONT dialog issue: (Registered Users Only): Depending on how many fonts you have loaded on your system as well as the relative speed of your system, you will notice a pause when you select the FONT Extensions function... your system is supplying a list of fonts to the array that fills the dropdown list box. Don't worry.

Text Box Prompting: You are prompted for pixels or percentages or URLs in various text boxes. If you see a *http://* pop up in front of where you need to type a URL, that means it will be entered for you, i.e., you don't need to type the *http://* part of the URL, just what follows. Same goes for percent signs (%). Exception to the rule regarding the FONT (registered version only) SIZE extensions for relative sizing, you need to enter the plus or minus before the number. For absolute sizing, just enter the number.

Benefits of Registering

If you register Version 2.0 of the Word-Wise Web Writer, you get additional HTML tag support, beginning with the **FONT** tag extensions brought to you by MS Internet Explorer and by Netscape Navigator. As you can see from the dialog box...



...this feature supports the MSIE's FONT color and typeface options, allowing you to specify the first two font choices you want to be displayed. The drop-down list boxes include every font on *your* system, but keep to the basics unless you know your audience shares the same taste in fonts. The text you enter in the text box will even display in your Web Writer screen in the font you choose! The third drop-down list box includes 60 popular colors with text descriptions for your sanity and hex codes for the browser's.

This dialog also supports Netscape's relative and absolute FONT sizing as well as BASEFONT specifications.

Additionally, you get support for the **FIG**ure tag, including ALIGN options for the figure and optional caption. The CREDIT and OVERLAY features are also supported. Find out why FIG may replace IMG in functionality.

The Web Writer Toolkit includes a macro to convert your existing text HTML document into the color coded font styles the Web Writer. After you run this macro, you can toggle tag viewing and easily distinguish your linked text. You will also receive any additional features added to the toolkit.

***NEW* The Word-Wise Web Writer Survival Kit** is a quick reference for beginning HTML authors to help you get up to speed fast. Read this before you buy any manuals! Additionally, the Survival Kit includes a

button by button breakdown of the toolbar guiding you in the use of the Word-Wise Web Writer's dialog boxes, often with tips on making the best selections.

Painless Registration

If you find the Word-Wise Web Writer useful, please register it for the startlingly affordable price of \$8.50 + \$2.00 (for shipping and handling), a total of \$10.50. You're comments on the future development of WWWW are eagerly solicited.

Those who register WWWW Version 2.0 reap the following benefits:

- **The FONT: FACE, COLORS, SIZE, BASEFONT extensions (MSIE & NN)**
- **The FIGure extensions. (HTML 3)**
- **The Text HTML to WebWriter Styles Converter**
- **The Word-Wise Web Writer Survival Kit (NEW!)**
- Additional, interim Web Writer toolkit items as added.
- Peace of mind from a clear conscious
- Elimination of the registration reminder screens
- Any interim improvements in the template

-----<snip>----- O R D E R F O R M -----
<snip>-----

[] **YES:** I want to register the Word-Wise Web Writer™ Version 2.0 and receive support for the FONT and FIG extensions as well as the Web Writer HTML toolkit. **My check or money order for \$10.50 is enclosed.** My comments/suggestions (if any) are listed below or in the email. (Send email to: jackwpass@aol.com)

Mail my 3.5" DS/HD disk to:

NAME: _____
Addr: _____
City: _____
State, ZIP: _____
email: _____

Please make check Payable to:

Jack Passarella
ASPIRING Software Add-Ins
24 Shady Brooke Lane
Swedesboro, NJ 08085
email: jack.passarella@compudata.com
jackwpass@aol.com

WWW:

<http://members.aol.com/jackwpass/aspire.html>

[] **NO:** I don't want to register at this time, but my comments/suggestions are listed below. Keep me posted on developments via email address:

COMMENTS:

