

Robot Battle Game Help

Top Level Topics

[Win Cash Prizes](#)

[Registering Robot Battle](#)

[More About Robot Battle](#)

[Using the Main ToolBar](#)

[Using Various Dialogs](#)

[Point Calculations](#)

[Robot Battle Version 2](#)

[How to Contact Me](#)

[Copyright and Disclaimer](#)

The Contest

The contest entrance fees has been reduced to **\$5**. Previous contests have cost \$10.

The Contest is your chance to determine how good your robots actually are. Send in your robots to compete in a tournament against robots written by others from all over the world. Your robot will fight in hundred of games, steadily facing tougher and tougher competition.

The contest will be a round robin tournament. At each level, your robot will fight in many thirty game matches against various competitors. At the end of each level, total points will be tallied. Only the top one third high scoring robots will proceed to the next level of competition.

Six robots will make it to the final level. These six robots will fight in one sixty game match to decide the overall champion. **All six finalist will receive a substantial cash prize.** Prize amounts will be a given percentage of total the entrance fees collected. Actual amounts will change as the number of entrants changes.

<u>Place</u>	<u>Percentage</u>	<u>Sample Prize (assuming 200 entrants)</u>
Winner	35%	\$350
2nd Place	6%	\$60
3rd Place	6%	\$60
4th Place	6%	\$60
5th Place	6%	\$60
6th Place	6%	\$60

All contestants will receive final results. These results will contain overall contest information such as the number of contestants, the number of levels in the tournament, finalists' names, champion's name, and prize details. Contestant will also receive individual results. These will include the highest level your robot reached, the number of wins and losses during each level, score at each level, and final tournament standing.

The currently scheduled contest dates are listed below. If there is enough demand, additional contest dates will be scheduled.

-November 1st, 1995
-May 1st, 1996

Send in as many robots as you like. Each robot has a **\$5** registration fee. Remember, you do not have to register the game itself to enter the contest. If you do register the game, however, you may enter one robot at no charge. All robots must be properly prepared before entry. To prepare a robot for contest entry, run the **contest.exe** program included with the game or click the button below.

Prepare Robot

Once your have prepared your robots for entry, you must send them in. See How to Contact Me for more information about getting your robots to me. Also, let me know if you would like contests with other formats in the future. For example, I could also organize one-on-one tournaments.

Robot Battle Dialogs

Since Robot Battle contains no menus, the primary user interface mechanism is dialog boxes. Various dialogs are displayed to option detailed information and clarity actions. The list below shows all of the more complicated dialogs. Click on a specific dialog to obtain more help.

<u>Error Dialog</u>	Displays errors caused by robots.
<u>File Dump Dialog</u>	Used to select information that will be written to file.
<u>Information Dialog</u>	Displays information about a specific robot.
<u>Match Results Dialog</u>	Displays point results at the end of a match..
<u>Selection Dialog</u>	Used to setup and start new matches.
<u>Setup Dialog</u>	Used to change the game's environment.
<u>Variable Inspector Dialog</u>	Used to view and modify robot variables.

About Robot Battle

Can you design a robot to best all challengers? To survive, your robot must have better tactics, intelligence, and adaptability than all others. Can you out think and out gun your opponents? This is the place to find out! Build a robot and match your wits against up to five other robots in head to head battles to the death. Watch your ANIMATED robots come to life with stunning sound effects in matches of 1 to 65,500 games.

Robot creation starts by dreaming. How can your robot stay alive in an open arena with five other deadly robots hunting it down? How can you find and destroy the enemy before they find you? Of course the only way to answer these questions is trial by fire. Build a few robots and watch them get crushed by the simple sample robots provided with this game. Eventually, you will be able to match wits with other skilled robot designers.

If you have any ideas about the future of Robot Battle, please see the [Robot Battle Version 2](#) help topic.

Damage Summary

The following summarizes the events that can change a robot's energy store. When a robot collides with any other object, it loses 1 energy point. The "obtained from" description below is provided to illustrate this. All objects contain positive energy. There is no such thing as negative energy. The difference between objects is whether they add or subtract their energy from a robot.

<u>Action</u>	<u>Energy Change</u>	
Firing energy missile	-1 to -7	
Collision with energy missile	-5 to -29	obtained from: (-4 to -28 -1)
Collision with another robot	-1	obtained from: (-1)
Collision with energy mine	-20	obtained from: (-19 - 1)
Collision with energy cookie	+20	obtained from: (21 - 1)

Copyright and Warranty

Copyright Notice

Robot Battle is Copyrighted © 1995 by Bradley Schick. All rights reserved.

License Agreement

You should carefully read the following terms and conditions before using this software. Your use of this software indicates your acceptance of this license agreement and warranty.

Distribution

You are hereby licensed to make as many copies of this software and documentation as you wish. You are required to distribute only exact copies of the original software, supporting files, and documentation. You are expressly prohibited from charging or requesting donations for this software or its documentation. You are also specifically prohibited from distributing this product with other products without written permission from the author.

Disclaimer of Warranty

THIS SOFTWARE AND THE ACCOMPANYING FILES ARE SOLD "AS IS" WITHOUT ANY WARRANTIES WHETHER EXPRESSED OR IMPLIED. THE AUTHOR WILL NOT BE HELD LIABLE FOR ANY SPECIAL, INCIDENTAL, CONSEQUENTIAL, DIRECT OR INDIRECT DAMAGES DUE TO THE USE OF THIS SOFTWARE OR ITS DOCUMENTATION.

Registering Robot Battle

Robot Battle may be registered for the low price of \$25. What is in it for you? Two things. First of all, I will send you more pre-built robots. These robots are substantially more advanced than the sample robots provided with the Game. You might use these additional robots to improve your own designs. Also, these robots are quite fun to watch.

The second benefit is encouragement. If you like this game and would like more, why not register it? The more registrations I receive, the more likely I am to produce more games. A little financial backing will also help me crank out Robot Battle Version 2 faster. Please help support the development of Robot Battle.

Remember, you **do not** need to register Robot Battle to enter The Contest. If you do register, however, you may enter one robot in The Contest at no charge.

Registration Methods:

Standard Mail

CompuServe SWREG

International Registration

Registering by Mail

Select <File | Print Topic> to print out this order form. The order.frm file also contains the same order form. Mail the completed form and payment to:

Brad Schick
PO Box 14056
Chicago, IL 60614-0056

Personal Information

Name: _____ Date: _____
Address: _____
City: _____ State: _____, Zip: _____
Country: _____
Day Phone: _____ Evn: _____
Email: _____

Payment Method (check one)

Check: _____ Money Order: _____ Credit Card: _____

Credit Card Information

Mastcard: _____ VISA: _____
Card Number: _____
Exp. Date: _____
Signature: _____

* Charges will appear under the name **Wille Products**

Payment Amount

Number of Copies _____ at \$25 each = _____

Disk Type (check one)

3.5: _____ 5.25: _____

Operating System (check one)

Windows 3.1: _____ Windows NT: _____ Other: _____

How did you obtain Robot Battle (complete one line)

CompuServe: _____
America Online: _____
FTP Site: _____ Site Address: _____
Disk Vendor: _____ Vendor Name: _____
BBS: _____ BBS Name: _____ BBS Number: _____
Other: _____

Registering on CompuServe

Your may register Robot battle on CompuServe using the software registration forum. The registration fee will be added to your CompuServe bill. At the ! prompt type GO SWREG and follow the menus. The registration ID for Robot Battle is 4093. SWREG may be used only to register the game itself, not to enter The Contest.

International Registration

The easiest way for non US citizens to register is via credit card. Both MasterCard and VISA are accepted. If you do not have MasterCard or VISA, you may send me a check in your native currency. You must convert \$25 US into your native currency using the latest conversion rate. You may also obtain a money order in \$US from your local bank. Since I am charged to convert checks written in non-US currency, I prefer credit card and money order registrations.

In all cases, fill out the order form and send it to me by standard mail. Although I am charged for non-US checks, please register using a method that is convenient for you. If you are a CompuServe member, SWREG is another great way to register.

How to Contact Me

The following is a list of way to contact me if you need to do any of the following:

- Enter robots in The Contest
- Give suggestions for Version 2
- Report problems
- Get technical support
- Ask other questions.

Additional Contest Information

To enter The Contest using CompuServe, America Online, or the Internet, send an email containing your prepared robots. To enter using the Robot Battle FTP Site, simply upload your prepared robots to the /RobotBattle/contest_uploads directory. Before sending in your robots, they must be prepared using the **contest.exe** program included with this game. If you are paying the entrance fee using VISA or MasterCard, prepared robots are all you need to send. If you are paying the entrance fee with a check or money order, you must send the payment separately via Standard Mail.

Standard Mail

Brad Schick
PO Box 14056
Chicago, IL 60614-0056

Robot Battle FTP Site (ftp site)

Site address: ftp.interaccess.com
Login: anonymous
Password: <your email address>
Directory: /RobotBattle

Robot Battle Mailing List (mailing list)

You must send an email to the following address:
majordomo@interaccess.com
In the BODY of your message, type this AND ONLY THIS:
subscribe robot-list
The subject of your message is ignored.

The Internet

schick@interaccess.com

CompuServe

75573,1112

America Online

robotbt1

Robot Battle BBS

The Robot Battle BBS never made it. I have found that most Robot Battle players have Internet access. I have therefore chosen to provide an FTP site instead of a BBS. The FTP site should be less expensive since no long distance bills are involved. For more information see the [Robot Battle FTP Site](#) help topic.

Robot Battle FTP Site

The Robot Battle FTP Site serves as the headquarters for Robot Battle updates, utilities, and contest entries. It is also a great place to trade robots with other Robot Battle gamers from all over the world. Jump on the Net and join the fun! There is absolutely no charge. The ftp site is already available.

Please remember to occasionally upload robots to the ftp site. If you do not want people stealing your great work, use the distrib.exe program to scramble your robots. If you do not want to be associated with your robots, simply do not put your name in the comments. Its an anonymous ftp site.

Site address: [ftp.interaccess.com](ftp://ftp.interaccess.com)
Login: anonymous
Password: <your email address>
Directory: /RobotBattle

Check out the [Robot Battle Mailing List](#) as well!

Robot Battle Mailing List

The Robot Battle Mailing List is an electronic forum for news, questions, discussions, and debates about the game Robot Battle. Trade information about designing robots with other Robot Battle gamers from all over the world free of charge. The Robot Battle Mailing List is an open list. The list owner does not approve messages. Postings are immediately reflected to every member of the list.

To Get More Information

You must send an email to the following address:

majordomo@interaccess.com

In the BODY of your message, type this AND ONLY THIS:

info robot-list

The subject of your message is ignored.

To Subscribe

You must send an email to the following address:

majordomo@interaccess.com

In the BODY of your message, type this AND ONLY THIS:

subscribe robot-list

The subject of your message is ignored.

To Unsubscribe

You must send an email to the following address:

majordomo@interaccess.com

In the BODY of your message, type this AND ONLY THIS:

unsubscribe robot-list

The subject of your message is ignored.

Check out the [Robot Battle FTP Site](#) as well!

Robot Battle Version 2

Yes, another version of Robot Battle is already being designed. You can influence its outcome. Below I have listed a few of the major features I plan to add to Version 2. I would like to know what you think. Do you like the ideas below? What other ideas do you have? It is hard to say when Version 2 will be done, but I think it will be near the end of 1995.

To send me your thoughts see: [How to Contact Me](#)

Custom Maps:

I plan to allow maps that are much bigger than the current 400 x 400 display area. You will be able to scroll around the map or follow a single robot. There will also be a map builder. This will allow you to build custom maps with both obstacles and terrain.

Team Playing:

This will involve a few extensions to the robot scripting language. I would like to allow robots to communicate with one another. This should enable coordinated team battles. Commanders could sit behind the battle lines instructing other robots.

Interactive Debugger:

This should make debugging robots a lot easier. The debugger will allow for both event simulation and stepping through a robot's script while it executes.

Better Graphics:

I would like to integrate a better graphics engine. Currently, I use my own home grown stuff. This should allow me to get rid of that annoying "dead zone" surrounding robots. This "dead zone" becomes noticeable when Robots collide.

Network Support:

I plan to allow for network and possibly modem games. This will let many people watch games as they progress. I am still not sure how this will work. Any ideas?

Visual Language Editor:

This is a very cool, but undefined idea. I would like to provide a way of visually building robots. I think some form of text editing would still be required, maybe I could just provide a graphical way of binding events to their handlers. I could also change the language somewhat to accommodate this.

Selectable Weapons:

This would allow robots to chose their weapons and defenses at the start of every game. Various types of guns, mines, and shields would be available. There would also have to be some type of limitation such as weight, energy, or cost regulating the weapons selection process.

Prepared Robots

Before robots are entered in The Contest, they must be prepared using the **contest.exe** program included with the game. This simple Windows program adds important information such as your name, address, and payment method to robot script files. Robots that have not been prepared for entry will not be accepted. Press the button below to start **contest.exe**.



About the Distrib Program

The **distrib.exe** allows you to scramble robots for distribution to others. Scrambled robots are not readable by other people. This allows you to give others your robots without giving them your secrets. The Robot Battle game itself is able to read robots that have been scrambled with the **distrib.exe** program.

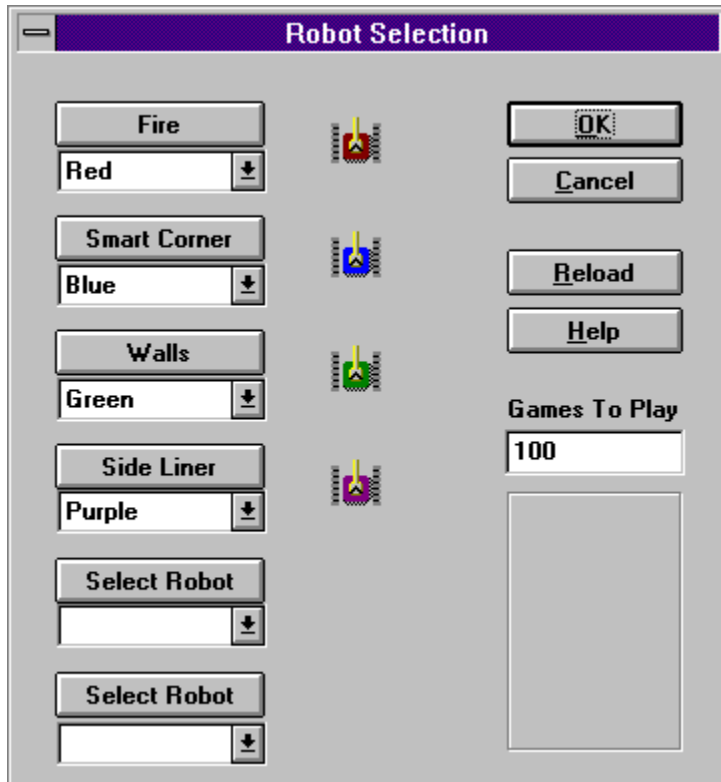
The scrambling technique is fairly simple. Please do not assume scrambled robots are uncrackable. I make no guarantees about the safety of robots scrambled with the **distrib.exe** program. That said, I can not imagine why anyone would go to the trouble of building a descrambler. Your scrambled robots should be safe.

Do not enter scrambled robots in the contest. If a scrambled robot is received, you will be required to resubmit a plain unscrambled robot. Press the button below to start **distrib.exe**.

Scramble Robot

Selection Dialog

This dialog appears when the **New** button is pressed on the ToolBar. It allows you to setup a match between robots. From one to six robot files may be loaded from disk. Robot colors may also be specified using this dialog. The selection dialog is also used to specify how many games should be played in the match.



Select Robot

Press this button to load a robot file from disk. Each button represents one robot. Once a robot has been selected for this button, it may be clicked again to select a different robot.

Select Color

This drop down list allows a custom color to be assigned to a robot. A robot's color may be changed any number of times while the selection dialog is open.

OK Button

Click this button to accept the selected robots, colors, and game count, and start a new match. If another match is already in progress, a confirmation window will appear after pressing OK.

Cancel Button

Click this button to ignore all changes and closes selection dialog. If another match was already in progress, it will continue unchanged.

Help Button

Click this button to bring up the help text you are reading.

Games To Play

Use this field to specify how many games should be played in the match. The selected robots will play this number of games before the match ends.

Robot Pictures

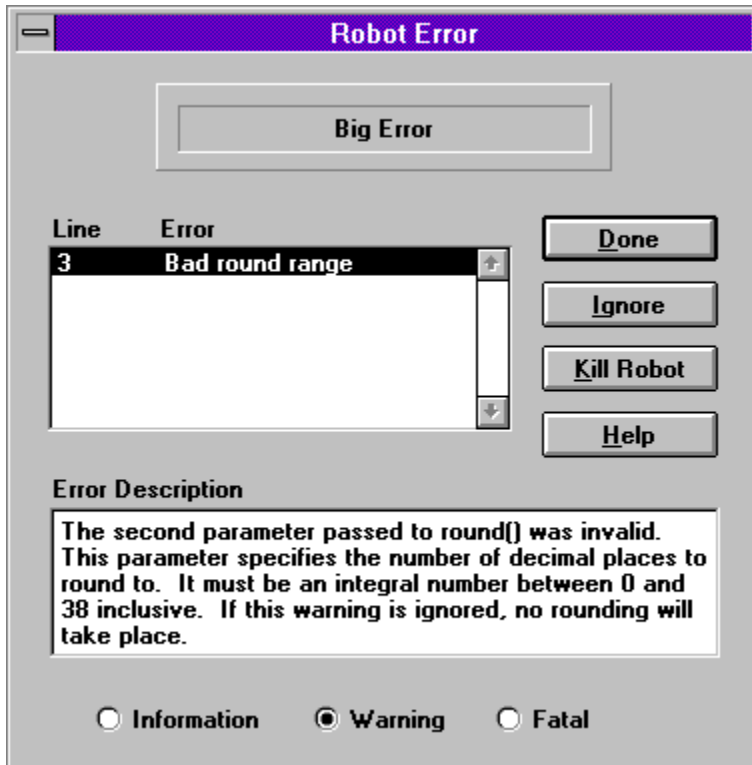
Each loaded robot is displayed next to the button that was used to load it. The currently selected color is used to draw each robot.

Reload Button

Click this button to automatically reload the same robots that played in the last match.

Errors Dialog

This dialog appears when a robot error occurs. Errors may occur either during robot loading from the Selection Dialog or during actual game play. If the **Error Dialog** appear during robot loading, the Ignore and Kill Robot buttons will not be displayed. Since all errors prevent a robot from loading, these buttons do not apply.



Robot Name

This area displays the name of the robot that caused an error. If an error occurs while loading a robot from disk, this area will display "During Load".

List of Errors

This list shows all of the errors caused by the robot. It includes a line number from the robots script file and a short description of the error. Selecting an entry will provide a more detailed description of the error.

Error Description

When an error is selected from the list of errors, this area displays a detailed description of the error. It also provides suggestions for resolving the error.

Done Button

Click this button to close the error dialog.

Help Button

Click this button to bring up the help text you are reading.

Ignore Button

This button is only displayed when an error occurs during game play. Click this button to cause the displayed error to be ignored for the rest of the match. The error is ignored only for the robot and line on which it occurred. If this same error occurs on another line it will not be ignored.

Kill Robot Button

This button is only displayed when an error occurs during game play. Click this button to kill the robot that caused the error removing it from the current game.

Error Type

When an error is selected from the list of errors, these radio buttons display the error type.

Points Calculation

Points calculation is straight forward. When a robot is eliminated from a game, all surviving robots receive a single point. The winner of a game also receives one bonus point for winning. In a six player game, for example, the winner receives 6 points, second place receives 4, third gets 3, fourth gets 2, fifth gets 1, and the loser gets nothing. Points are displayed at the end of each *match*. In a multiple game match, points from all games in the match are tallied for the final standings.

Match Results							
	1sts	2nds	3rds	4ths	5ths	6ths	Points
Smart Corner	3	3	1				12
Fire	2	3	2				9
Side Liner	2	1	4				7

Firsts

This column displays the number of times each robot placed first.

Seconds

This column displays the number of times each robot placed second.

Thirds

This column displays the number of times each robot placed third.

Fourths

This column displays the number of times each robot placed fourth.

Fifths

This column displays the number of times each robot placed fifth.

Sixths

This column displays the number of times each robot placed sixth.

Total Points

This column displays the total number of points earned by each robot.

Smart Corner

This row displays scoring information for the first place robot name *Smart Corner*.

Fire

This row displays scoring information for the second place robot name *Fire*.

Side Liner

This row displays scoring information for the third place robot name *Side Liner*.

Smart Corner Firsts

Displays the number of times *Smart Corner* placed first (3 times).

Smart Corner Seconds

Displays the number of times *Smart Corner* placed second (3 times).

Smart Corner Thirds

Displays the number of times *Smart Corner* placed third (1 time).

Smart Corner Total Points

Displays the total points earned by *Smart Corner*

$$(3 \text{ firsts}) \times (3 \text{ points}) = 9 \text{ points}$$

$$(3 \text{ seconds}) \times (1 \text{ point}) = 3 \text{ points}$$

$$(1 \text{ third}) \times (0 \text{ points}) = \underline{0 \text{ points}}$$

12 points

Fire Firsts

Displays the number of times *Fire* placed first (2 times).

Fire Seconds

Displays the number of times *Fire* placed second (3 times).

Fire Thirds

Displays the number of times *Fire* placed third (2 times).

Fire Total Points

Displays the total points earned by *Fire*

(2 firsts) x (3 points) = 6 points

(3 seconds) x (1 point) = 3 points

(2 thirds) x (0 points) = 0 points

9 points

Side Liner Firsts

Displays the number of times *Side Liner* placed first (2 times).

Side Liner Seconds

Displays the number of times *Side Liner* placed second (1 time).

Side Liner Thirds

Displays the number of times *Side Liner* placed third (4 times).

Side Liner Total Points

Displays the total points earned by *Side Liner*

(2 firsts) x (3 points) = 6 points

(1 second) x (1 point) = 1 points

(4 thirds) x (0 points) = 0 points

7 points

Done Button

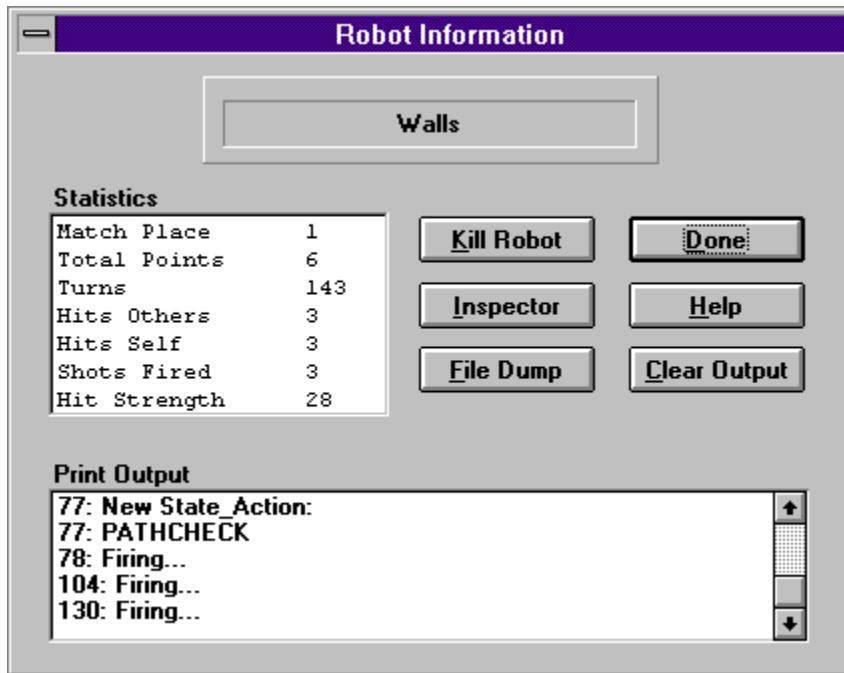
Closes the results window and returns to the last game.

Help Button

Brings up the help information you are reading.

Robot Information Dialog

This dialog appears when a robot button is clicked from Robot Battle's main screen. This dialog shows statistics about the robot whose button was clicked. This includes the output display from Print statements. Robots may retrieve most of the information shown in this dialog by using the various Get... functions. This dialog also serves as a debugging tool. It provides access to the Inspector dialog, provides file output, and allows a robot to be immediately killed.



Robot Name

This area displays the name of the robot whose information button has been pressed.

Match Place

This area displays the robot's current place in the match. Since points are awarded when robots die, this value is not effected by robots in the current game that are still alive. For example, all robots are tied for first place at the start of a new match.

Total Points

This area displays the total number of points the robot has scored thus far in the match.
This is a cumulative score from all games played in the current match

Hits Others

This area displays the number of times the robot has hit another robot with an energy missile. Missiles that hit mines, cookies, or nothing are not included in this number. A robot may retrieve this number by calling [GetHitsOther](#).

Shots Fired

This area displays the total number of energy missiles fired by the robot. This includes missiles that hit an object and missiles that hit nothing. A robot may retrieve this number by calling [GetShots](#).

Turns

This area displays the number of turns the robot has had in the current game. This number is used as the time-stamp displayed in the output list below. A robot may retrieve this number by calling GetTurns.

Hits Self

This area displays the number of times the robot has been hit an energy missile. This number does not include collisions with any other object types. A robot may retrieve this number by calling [GetHitsSelf](#).

Hits Strength

This area displays the average impact strength of the energy missiles fired by a robot that hit another robot. Missiles that hit mines, cookies, or nothing do not effect this number. A robot may retrieve this number by calling [GetHitStr](#).

Print Output

This list box displays the results of calls to the Print function. A time stamp is added to each line. The time stamp represents the robot's turn number when Print was called. This list has a maximum of 200 entries.

Kill Robot Button

Click this button to kill the robot. The robot is killed by setting its energy to zero.

Inspector Button

Click this button to display the Inspector dialog. This window is used to view and modify user variables, and system variables.

File Dump Button

Click this button to write information about the robot to a file. This information may include Print output, user variables, and system variables.

Done Button

Click this button to close the robot information dialog.

Clear Output Button

Click this button to remove all entries from the output list below.

Help Button

Click this button to bring up the help text you are reading.

ToolBar

The **ToolBar** provides control over the game. Several of the buttons on the **ToolBar** change as the game changes states. Most of the buttons on the **ToolBar** bring up other dialog boxes that obtain more detailed information.



New Button

Click this button to start a new match. This button opens the [Selection Dialog](#) which obtains information about the new match.

Game State Button

This button changes between several states. It is used to either start, pause, or resume the current game. When the button reads "Start", clicking it will start the match. When the button reads "Pause", clicking it will cause the game to pause. When the button reads "Resume", clicking it will cause the game to resume. A paused game will remain frozen until the resume button is clicked.

End Button

Click this button to end the current game or match. This button opens a dialog that asks whether the current game or match should be ended.

Games Remaining

This field displays the number of games remaining in the current match. This number includes the currently playing game.

Exit Button

Click this button to quit Robot Battle. If a match is in progress, a confirmation dialog will be displayed, and will therefore never be less than one,

Setup Button

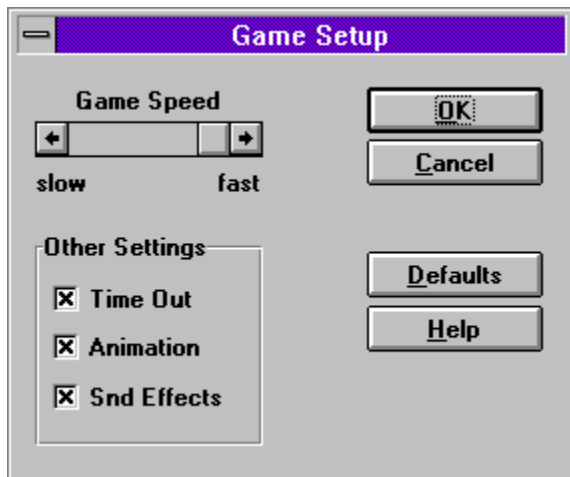
Click this button to open the [Setup Dialog](#). This dialog allows for customization of the game.

Help Button

Click this button to open the [Help Dialog](#). This dialog provides help on various Robot Battle topics.

Robot Battle Setup Dialog

This dialog appears when the **Setup** button is pressed on the ToolBar. The setup dialog allows configuration of the game. Various features may be turned on and off using this dialog. By turning off non-essential features, the speed of game play may be greatly increased. Setup choices are written to disk and will be remember in future uses of the game.



Game Speed Adjuster

This control may be used to change the speed of game play. This control is particularly useful on very fast computer systems. It allows the game to be slowed to a tolerable pace. When animation is deactivated, game speed defaults to its maximum and this control is disabled

Time Out Check Box

This check box allows game time-outs to be turned on or off. When time-outs are enabled (this control is checked) games that have no activity for an extended period of time will be automatically ended. When time-outs are disabled all games will continue until only one robot is alive.

Animation Check Box

This check box allows animation to be turned on or off. When Robot Battle is not displaying animation, games play much faster. This is often desirable when playing matches of hundreds or thousands of games. Deactivating animation also defaults game speed to its maximum value.

Sound Effect Check Box

This check box allows sound effect to be turned on or off. This control is disabled if your PC does not have a WAV sound device. Turning off sound effects also speeds up game play somewhat.

OK Button

Click this button to accept all setup changes and close the setup dialog.

Cancel Button

Click this button to ignore all setup changes and close the setup dialog.

Defaults Button

Click this button to return all setup parameters to their default states. Default game speed is calculated each time Robot Battle is started. It is based upon both processor and graphics speed.

Help Button

Click this button to bring up the help text you are reading.

End Dialog

This dialog appears when the **End** button is clicked from the ToolBar. The end dialog requests information about what should be ended. Click the **Nothing** button if you do not want to end anything. Click the **Game** button if you would like to end only the current game but continue with the rest of the match. Click on the **Match** button if you would like to abort the entire match.

About Dialog

This dialog display information about the Robot Battle game.

File Open Dialog

This is a standard Windows file open dialog. Use it to change drives, directories, and file types. Once you have found the file you would like, either double click on the file name or highlight the file name and select the **OK** button. Clicking the **Cancel** button will ignore any selection and close the dialog.

Help Dialog

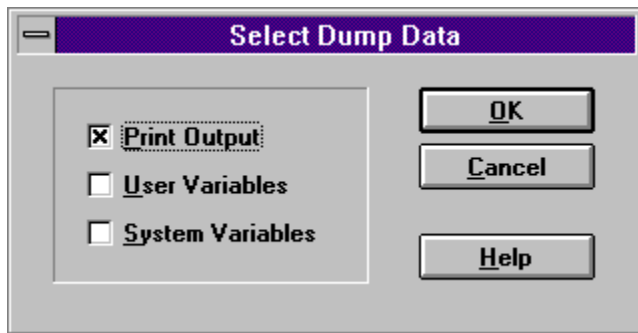
This dialog appears when the **Help** button is clicked from the ToolBar. The help dialog provides a number of options for which help is available. Select the item you would like help with and click the **OK** button. Clicking the **Cancel** button to return to the game without viewing any help.

Exit Dialog

This dialog appears when the **Exit** button is clicked from the ToolBar. The exit dialog will only appear when a match was in progress when the **Exit** button was clicked. This is your last change to change your mind about exiting Robot Battle. If the **Yes** button is selected, the current match will be aborted.

File Dump Dialog

This dialog appears when the File Dump button is clicked on the Robot Information dialog. Use this dialog to select the information that should be written to file. This dialog only appear when the Robot Information dialog is displaying information about a living robot. Only the Print output of a dead robot may be displayed, making this dialog unnecessary.



Print Output Check Box

This check box causes Print output to be included in the output file.

User Variables Check Box

This check box causes user variables to be included in the output file.

System Variables Check Box

This check box causes system variables to be included in the output file.

OK Button

Click this button to accept current selections and move to the file selection dialog. The file selection dialog is used to specify the file to which information should be appended.

Cancel Button

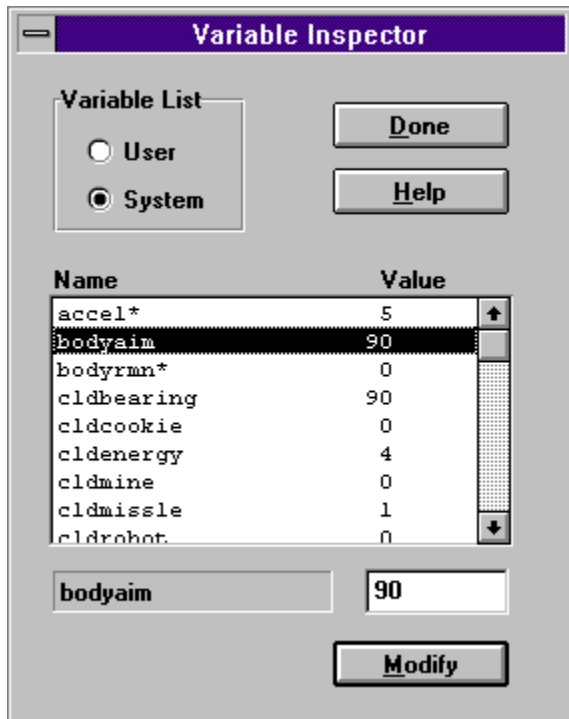
Click this button to abort the information dump process and return to the [Robot Information](#) dialog.

Help Button

Click this button to bring up the help text you are reading.

Variable Inspector Dialog

This dialog appears when the Inspector button is clicked on the Robot Information dialog. This dialog allows all robot variables to be viewed. It also allows all user variables and most system variables to be modified. This dialog is an extremely useful debugging tool. For example, collision and detection events may be simulated by modifying the appropriate system variables.



User Radio Button

This radio button causes the list below to display the robot's user variables.

System Radio Button

This radio button causes the list below to display the robot's system variables.

Variable Display List

This area displays the robot's variables and their current values. The type of variables displayed depends upon the radio button selected above. Selecting an item from this list will copy it to the modification area below. Variable names that are followed by a star (*) may not be modified.

Variable Name

This area displays the name of the variable selected from the list above. Variable names may not be modified.

Variable Value

This area displays the value of the variable selected from the list above. This area may be used to change the value of most variables. If a variable is not modifiable, its name is followed by a star (*).

Modify Button

Click this button to change the value of the select variable to the value displayed above. Changes to a variable's value do not take effect until this button is clicked.

Done Button

Click this button to close the variable inspector dialog.

Help Button

Click this button to bring up the help text you are reading.

Version 1.2 Updates

Welcome to Robot Battle 1.2. Version 1.2 maintains 100% compatibility with all previous Robot Battle versions. Several additions have been made to the Robot Battle Scripting language, many usability enhancements have been added, and a few bugs have been fixed. The Contest entrance fee has also been lowered and additional dates have been added. The following list details the additions to Robot Battle 1.2.

Usability Enhancements

- Automatic reload button added to robot selection dialog
- Debugger style inspector available from robot information dialog
- Complete file dump utility available from robot information dialog
- Kill robot button on information dialog
- Match place displayed in information dialog
- Added alt hotkeys to toolbar
 - alt-n new match
 - alt-s start match
 - alt-p pause game
 - alt-r resume game
 - alt-e end options
 - alt-x exit Robot Battle
 - alt-t setup options
 - alt-h help options
- Added ctrl hotkeys for common tasks
 - ctrl-g ends game
 - ctrl-m ends match
 - ctrl-r automatically reloads match

Language Enhancements

- Modulus operator (see math operators)
- Abs command*
- Max command
- Min command
- Event on/off commands only reset their corresponding variables when the event state is changed

*Note to 1.2 beta testers. The absolute value command is no longer an operator. Abs copies its results into the result variable. This change was made for consistency with other mathematical commands.

Also check out the new Robot Battle FTP Site and Robot Battle Mailing List information.

