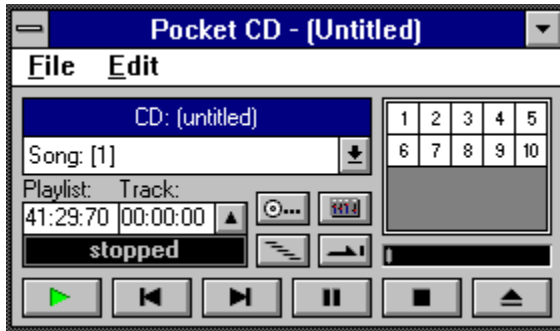


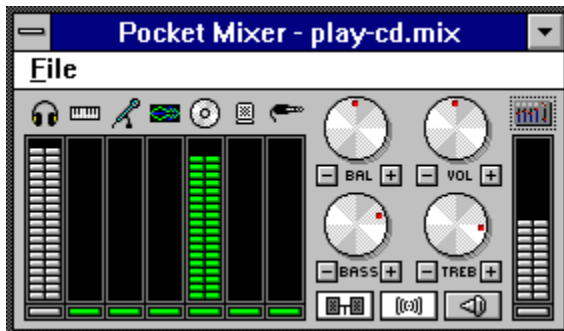
# Understanding the CDPlayer

Courtney Harrington  
72330,1502

The CD Player is a nice little program from MediaVision that will allow you to play your audio CD's through your computer. It turns your \$3,000 computer into a \$300 stereo.



This is your CD player. The audio is taken from the CD and goes to the Mixer and then to your soundboard. If you do not understand the mixer, then it is suggested you download the file MIXER.ZIP from this forum. It will show you how to set up the mixer to play and record from various inputs, as well as how to adjust your MIDI Mapper to play MIDI files. For now....



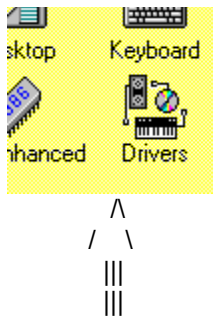
This is how your Pocket Mixer should be set up to play from your CD. If your Mixer does not look like this, change it, then open FILE and SAVE it as something like PLAY-CD.MIX so you can recall these settings next time you want to play a CD. Remember you are changing your mixer, so it must be changed again to hear WAV or MIDI files. If you don't know how, download the MIXER.ZIP file before making any changes to your current setup.

## Installing the CD Player

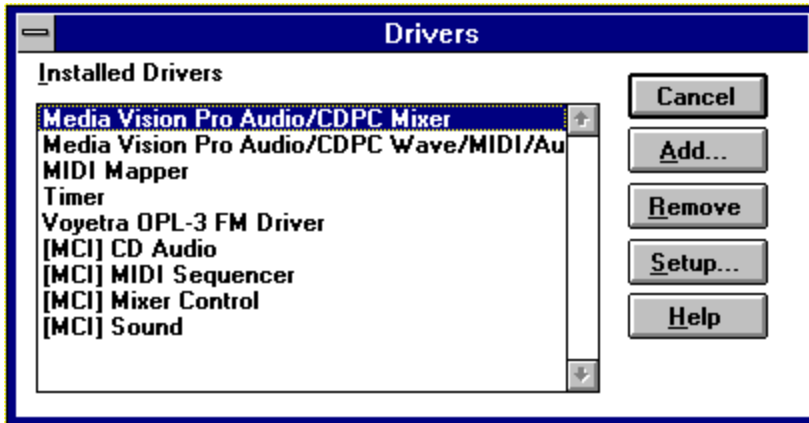
The CD Player is installed on your hard disk as part of the installation process by the MV disks. One major problem most people have is the error: "Undetectable problem in loading the specified device driver" when opening CD Player.

Here's the fix:

Open your Control Panel and double click on the Devices icon.



You will then see this screen...



Highlight [MCI] CD Audio

Click on remove

Close the window and restart Windows.

Place an AUDIO CD in your player. (Is it turned ON?)

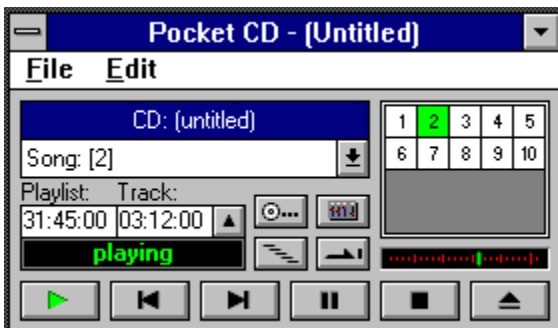
Open Control Panel/Drivers again.

Click on ADD and reinstall the CD Audio Driver.

That generally takes care of this error. Seems the driver has to see an audio CD in the player before it installs properly.

## The Player

The CD player is a simple program. The icons on it are as follows:



Play Back Forward Pause Stop Eject

1 track 1 track

(I find if I use EJECT, it won't play the CD anymore. Best to not push it...)



These four icons control how the CD is played:

The upper left is CUE. Sorry, I haven't figured that out yet.

Upper right calls up the mixer.

Lower left toggles the player between **random play** and **straight first to last** track.

Lower right toggles between **play to end and stop** and **play to end and repeat**.

Clicking on EDIT will allow you to make a list of the songs on that CD and then save this list to a file that can be recalled later. This player does not read any list information off the CD automatically.