

UNDERSTANDING THE POCKET MIXER

Courtney Harrington
72330,1502

A lot of us don't read the documentation, and just stuff in the card, wrestle with the DMA's and IRQ's and punch go.
Oops, no sound.
Boy, am I gonna blast MediaVision.
Wrong target.

Once thing overlooked by a lot of people, especially those upgrading from a SoundBaster is the Pocket Mixer and Pro Mixer.



The Pocket mixer.

This controls your Pro Audio sound card. You MUST have these sliders set correctly to hear MIDI, CD or WAV sound. The arrangement above will play WAV files through your card. Set your ProMixer to look like this, then click on FILE, then SAVE AS... and save it as something you'll remember. PLAYWAV.MIX seems to work. If you want to play WAV files, make sure this is the setup. If not, Click on FILE, then OPEN and select your MIX file: PLAYWAV.MIX. It will move everything around and here comes WAV sound.



The above arrangement will play MIDI files (provided your MIDI configuration is set correctly)
More on that later.

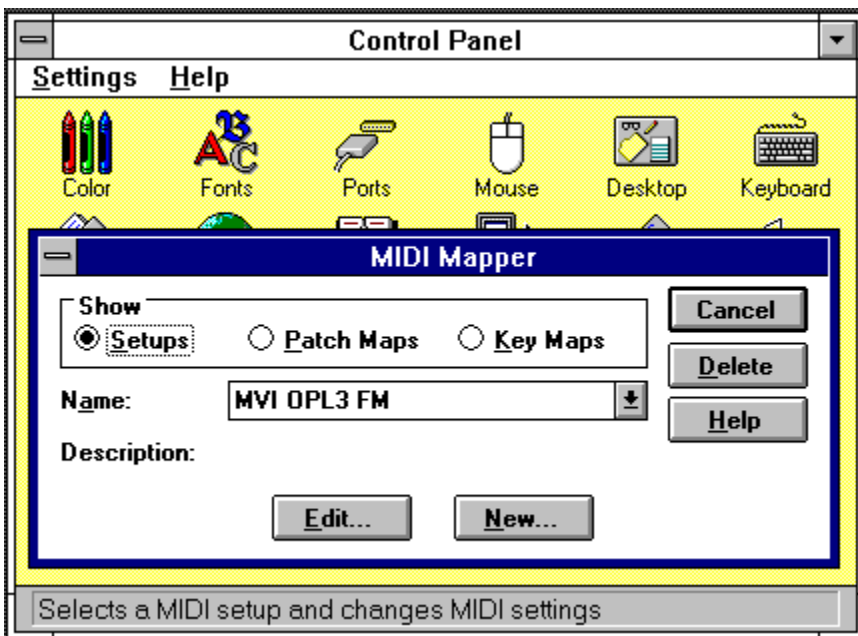


This arrangement will allow you to record from the LINE IN input on the card. This can be your CD, tuner, record player or whatever is plugged in there. To record using a microphone, plug it in to the MIC IN jack and click on the MIC ICON located on the bottom right of the PocketMixer and bring up the slider under the small MIC ICON (3rd from left). Click on the small green bar located at the bottom of that slider and it will turn red. That means RECORD MODE.

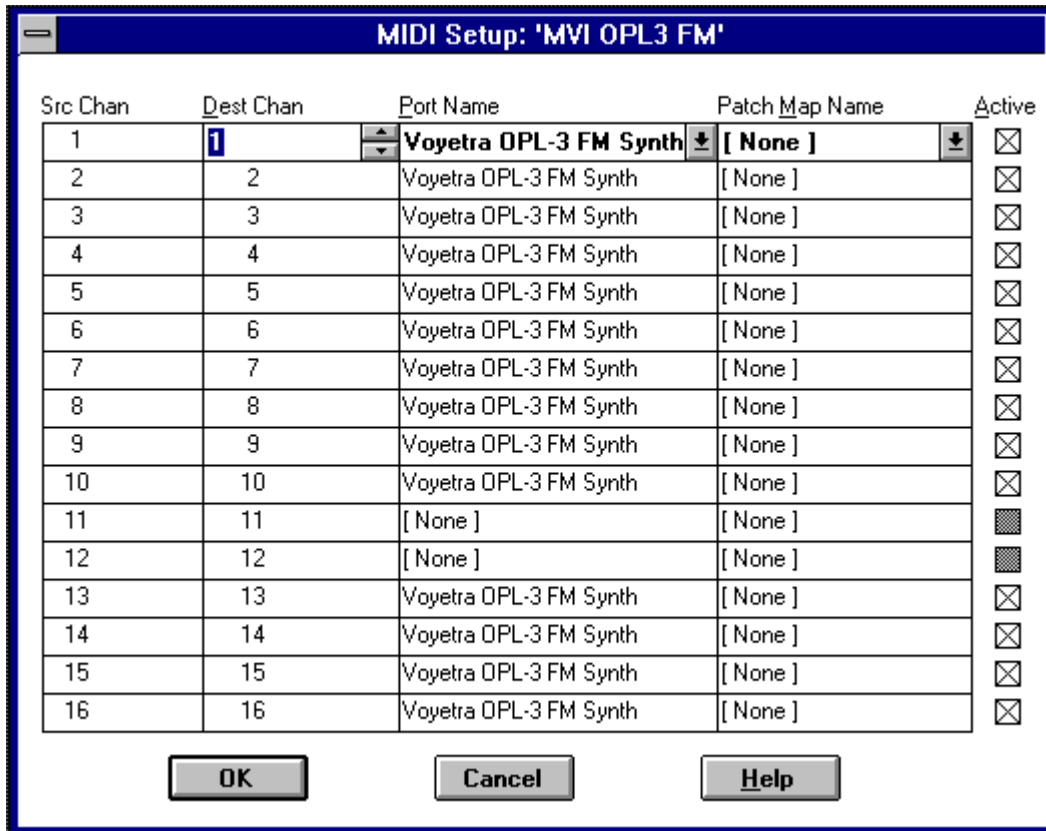
Now that you understand the concept of the Pocket Mixer, let's run through the other small icons along the bottom right. The mic you know. The one to the left is LOUDNESS, just like on your stereo. It increases bass. The one to the left of that is STEREO ENHANCE - it broadens the stereo effect...somewhat.

Playing MIDI Files

There have a lot of messages in the MV forum about not being able to play MIDI songs, with the exception of Canyon.Mid which Windows stuffs on your disk. The answer is change your MIDI configuration. Open your Control Panel and double click on MIDI MAPPER. You should see something like this (ignore what I have in the "Name:" box).



Click on EDIT and you should see something like this (yours may say MV ProAudio):



Notice how this one is set up. If yours is different, change it. Just click on the PORT NAME box and it will give some choices. Change #1-10 and 13-16 to what you see above. Keep 11-12 set to NONE. Click on OK and choose MVI OPL-3 FM as the name in the box (like in the first MIDI picture). Close the Control Panel.

That should get you going for those MIDI songs. Not ALL will work with this set up, but most will. If you run across one that doesn't, change your MIDI MAPPER back to what it was before you made these changes and try again.

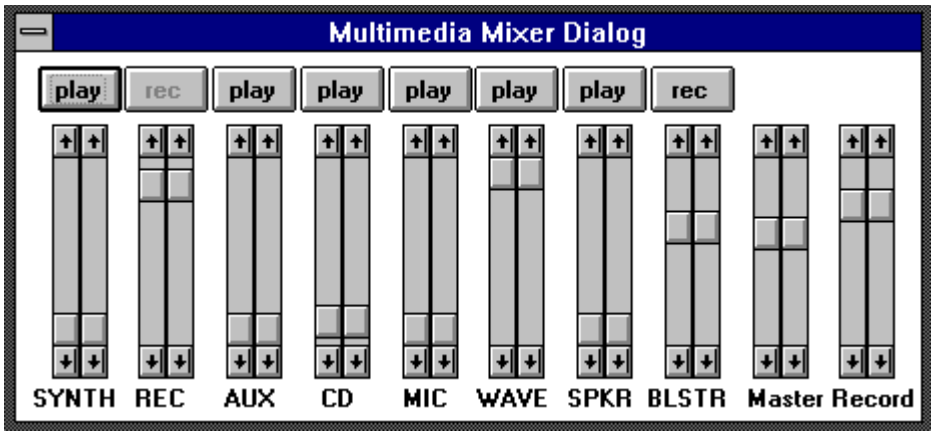
Pro Mixer

The Pro Mixer is nothing more than an enhanced Pocket Mixer. The two are tied together. Make changes in one, it affects the other. When you double click on promixer, it becomes an icon at the bottom of your screen.



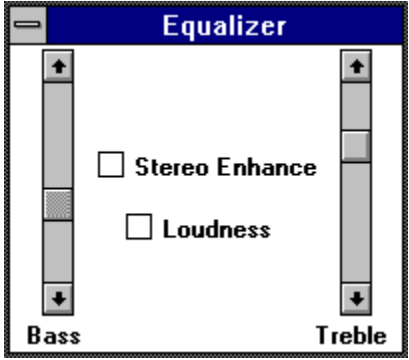
This confuses a lot of people. They say "where's the program?" Click once on the icon and a menu opens up.

This menu lists the components of the Pro Mixer. Clicking on them will open them up.



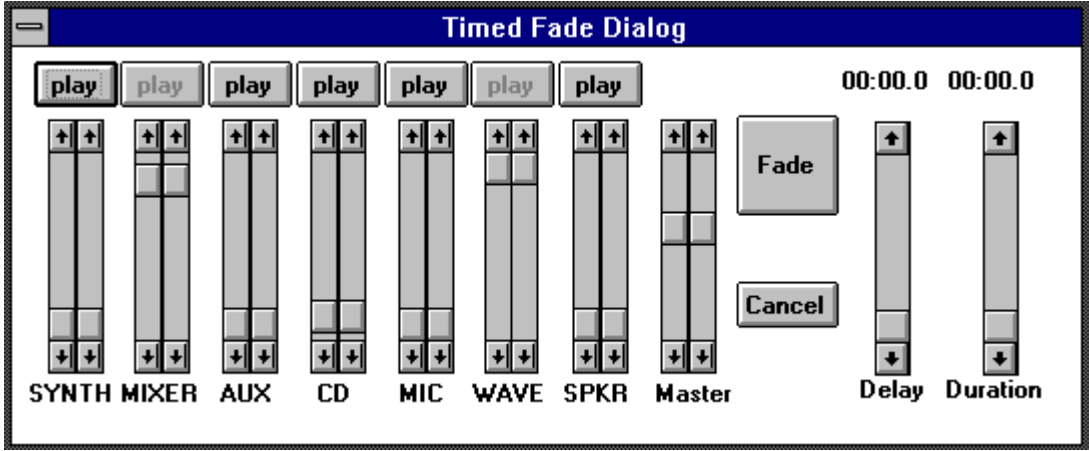
The Pro Mixer

This is like the various sliders on your Pocket Mixer with the addition of a few more. You move the sliders in Pocket Mixer, these will move too. The best way to learn it is open Pocket Mixer too and move things around and watch what happens.



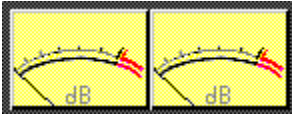
The Equalizer

These are the same as the Treble and Bass knobs in the Pocket Mixer. Stereo Enhance and Loudness are also repeated here.



Timed Fade Dialog (Mixer)

With this you can do fade up/down or pan on a timed basis. This is covered fairly well in the manual so I won't confused both of us here.



Wave Meter.

Cute. Don't work very well. They should give you an indication of your record level, just like the red line in the Pocket Recorder. Sometimes they read backwards. Sometimes they don't work at all. Don't depend on them. But they are fun to watch.

Wrapping it all up

Just remember, you have to set the Pocket Mixer (or Pro Mixer) if you want to hear anything out of your sound card. Think of the whole thing as a very expensive stereo system. You got knobs to turn (or push) to select Tuner, CD, Tape and Records. Same thing here except you use sliders. You have to push a button to go from RECORD to PLAYBACK on your stereo. Same thing here with the little red/green bar at the bottom of each slider.

If you have any questions, just leave them in the MediaVision Forum and one of us will try to help.