
Swift Platinum

All Holiday Clip Art +

By Cosmi Corporation

Contents

Chapter 1	1
Glossary of Terms	3
Index	5

Help- All Holiday Clipart +

Introduction

Swift Platinum All Holiday Clipart+ is the premier holiday clipart program. This program contains 1,350 pieces of clipart covering all of the holidays of the year. In addition, this program includes a very large "+." We are proud to go the extra mile for our customers, and this program features:

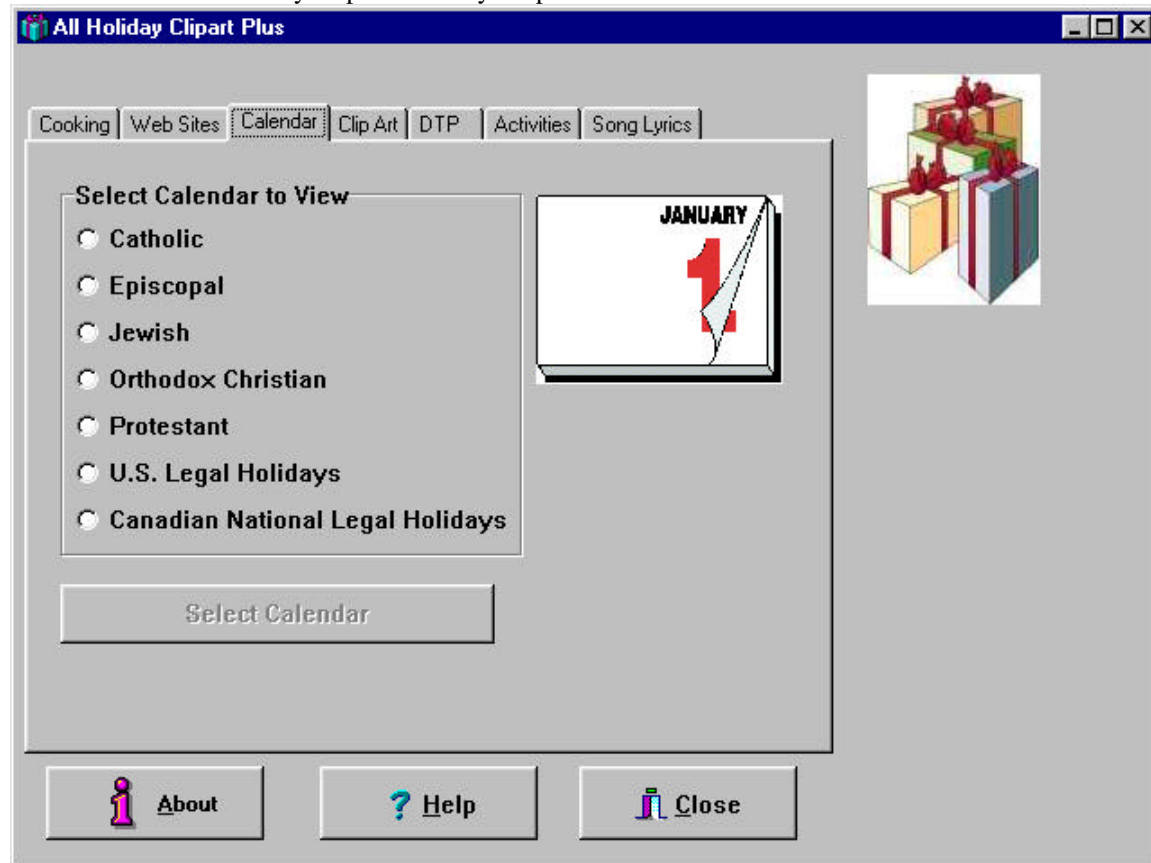
A directory of recommended web sites for various holidays

- Legal and religious holiday calendars for 1997-2017
- Activities for the whole family
- A collection of holiday recipes
- Example uses of the clip art to make publications
- The Lyrics to holiday songs
- Screensavers

We know that you will enjoy this program all year.

Main Menu

Swift Platinum All Holiday Clipart+ is very simple to use. You need to become familiar with the main menu:



The About button provides copyright information. The Help Button shows the file that you are seeing now. The Close Button exits the program and returns to Windows.

Each page provides either a list or series of buttons from which you make your choice.

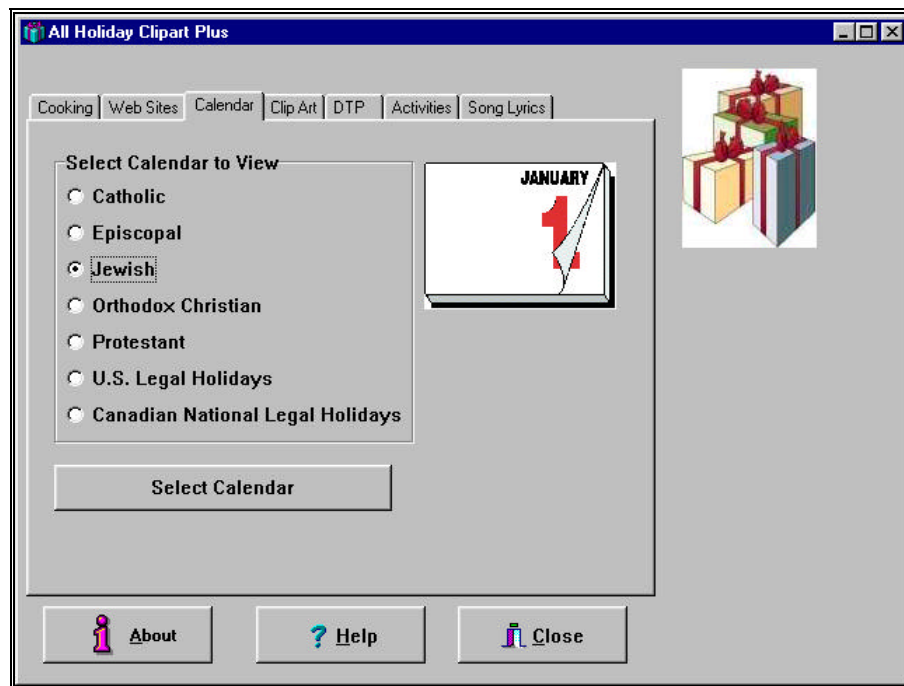
Radio Groups

A radio group gets the name from old style car radios. When you press in one button, that automatically pushes out the button that is punched in. Restated, you can only make ONE choice from within a radio group.



As you can see, the radio group above has *not* had an item selected. The Select Calendar button is grayed out, or disabled. When you click on one of the circles next to the item, you have pushed the button, and can then select which item you wish to run by clicking on "Select Calendar."

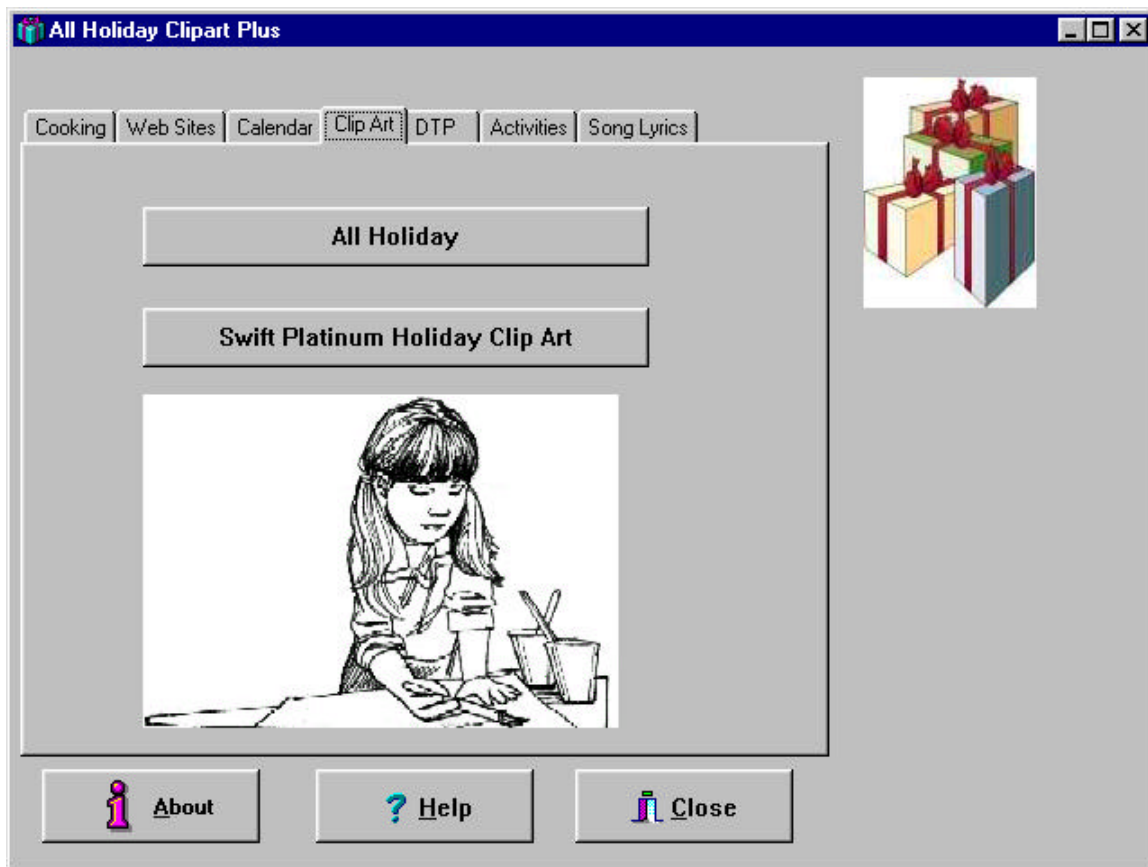
In this screen the JEWISH button is pressed. It will be run when you press SELECT CALENDAR.



That's all there is to it- know click on select calendar to run the calendar. Please note that the calendar have their on-line help.

Push Buttons

Some pages have "push buttons. They appear as follows:



Using a push button is very simple- just click on it. You will then be taken to the clipart viewers where you can view and export these files. Again, these programs also have help available.

Screensavers

Installing and activating the screen savers

There is a separate installation routine for each of the screen saver. The screen saver modules are:

Autumn (Hallowe'en, fairs and carnivals, leaves, harvest, Thanksgiving)

Father (Father's Day)

February (Presidents' Day, Valentines's Day and Black History Month)

Kwanza

LaborDay

Mothers (Mother's Day)

Patriot (Patriotic US Holidays, including Memorial Day, Flag Day, Independence Day, and Veterans Day)

Summer (vacation spots and sports)

Winter (scenes)

Xmas (Christmas)

To use one of these screen savers, you need to install it according to the following directions, and then once it is installed activate it as described below.

Installation for Windows 3.1 or Windows 3.11

To install a screen saver, insert the CD into your CD-ROM drive, launch File Manager, and locate the appropriate setup.exe file. Double click on that setup.exe to begin the installation routine. These setup.exe files are located on the CD in the savers\16bit\ subdirectory.

Installation for Windows 95

To install a screen saver, insert the CD into your CD-ROM drive, launch Windows Explorer, and locate the appropriate setup.exe file. Double click on that setup.exe to begin the installation routine. These setup.exe files are located on the CD in the savers\32bit\ subdirectory:

Activating your selected screen saver

After installation, you can easily activate the religious screen saver as your default Windows screen saver. Here's how:

In Win 3.1x, select the "control panel" icon. This normally resides in your "Main" group.

In the Control Panel, double-click on the "desktop" icon.

Locate the "Screen Saver" control grouping in the center of the Desktop dialog box. Single click on the down arrow next to the "Name" list box, and select the appropriate screen saver module name from the dropdown list.

Change the activation delay if you'd like, then close the Control Panel.

In Win95, right click on your desktop, click on properties, and click on the Screen Saver tab.

Single click on the down arrow next to the "Screen Saver" list box, and select the appropriate screen saver module name from the dropdown list.

Change the activation delay if you'd like, then close the Properties dialog.

Troubleshooting screen saver

The screen art has been processed to display as beautifully as possible on the widest number of computers. We hope that you are able to enjoy the screen savers with your current system configuration. Here are some common issues which might arise.

The pictures don't fill the screen. The screen art modules contains many images whose compositions were portrait rather than landscape oriented. It would mar their beauty to distort them into a landscape view. Therefore, those images have been centered on a plain black background.

The screen jumps or flickers between pictures or When I resume working on my computer, the colors turn ugly for a moment. The illustrations were individually created with their own, as opposed to the Windows standard, 256-color palette. Windows is designed to load the palette for the next screen while the previous screen is still on your monitor. As a result, when you move your mouse or strike a key you might see an image that has been richly reproduced in 256 deep hues, suddenly redisplayed in the nearest colors to be found in the standard Windows 256 color palette before your desktop reappears. If you have a faster computer, the palette change may simply appear as a barely discernible flicker when the display changes.

The pictures don't have any detail; they look like they were drawn with finger-paints on sandpaper. The illustrations contain 256 different colors. If your video driver is only displaying 16 colors (no, there is no setting between 16 and 256), then you will not see all the colors in the original illustration. If your system can support displaying 256 colors, you may try changing your video settings. You will need your original Windows diskettes, and the diskettes that came with your video card. For detailed instructions, consult your Windows manual and any "read me" files that came with your video card.

The pictures are distorted or unintelligible or My system locks up while the screen saver is running.

The video display in the screen saver modules was designed to run using standard Windows video drivers. If your system does not currently use standard Windows video drivers, but is able to, you may try installing a different video driver. You will need your original Windows diskettes, and the diskettes that came with your video card. For detailed instructions, consult your Windows manual and any "read me" files that came with your video card.

You may also try installing the video driver supplied in the screen saver installation routines.

Printing Recipes

All Holiday Clip Art + provides three different ways for printing out recipes. The first is to print them from the main program. In addition, we provide RTF files of the recipes. These are installed in the root folder of the CD-ROM. One prints out on 3 by 5 cards, the other 4 by 6 cards.

3 by 5 cards: 3by5.rtf

4 by 6 cards: 4by6.rtf

In addition, we have provided a Recipe printing program which is available by clicking on the PRINT RECIPE icon.

You may use your favorite word processor to print out recipes by opening the files named above.

If you would like the recipes printed out in another size or format you can do so either from your favorite word processor or from our Recipe printing program by selecting PAGE SETUP and then setting the size you desire.

The recipe printing program has further help.

Users of the Windows 95 version of this program can also use WORDPAD to view or print recipes.

Please note that we do not include the graphics in the RTF files.

Frequently asked questions

1

Q: The quiz used to work- why doesn't it now?

A: If you MOVE the holiday quiz file the computer will look for the file it needs to run the quiz in the location where the program was originally installed. The moral of the story—if you need to move a program to another folder or drive designation, REINSTALL it, so the computer will know where to get the files in question.

2

Q: I can run part of the program but not other....

A: This is a variety of question # 1. The computer is looking for the files needed to run each part of this program in specific places. If you move anything, or if any files or folders are moved (which can happen by accident) the computer gets very unhappy.

#3

Q: I've just installed the program. Why doesn't it run? All that happens is that I see a flicker.

A: VERY IMPORTANT- there are two versions of this program. One for Windows 3.x and one for Windows 95. Install the correct version, please!

4

Q: My program doesn't look like the illustrations. The buttons on my program are plain, and there are not as many pictures.

A: This is a similar problem to question 3, above. There are two versions of the program. Windows 3.x and Windows 95. The Windows 3.x program does not support graphics in the same way that the Windows 95 program does. You are getting the SAME information, although there are less graphics on the menus. The clipart and activities are the same for both versions. Sorry- this is a limitation imposed by the 16 bit (win 3.x) versus 32 bit (windows 95) operating systems.

5

Q: I am changing from Windows 3.x to Windows 95- what should I do?

A: Reinstall the program and pick the Windows 95 installation.

6

Q: Can I run both the Windows 3.1 program and Windows 95 program on the same machine?

A: There are two situations in which there can be contention between the Windows 3.1 and Windows 95 versions. These could make your computer hiccup loudly. We recommend that you run only the version which is designed for your operating system.

7

Q: There are blank spaces in the songs, recipes, and activities. Why?

A: The songs, recipes and activities use high resolution graphics. Check your DISPLAY and set for the maximum number of colors available.

Contacting Cosmi

We encourage all of our users to provide comments and suggestions about this program. This program is supported by voice, fax and Internet e-mail.

Voice Support



For telephone support, call Cosmi Customer Service at 1-310-886-3510:

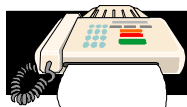
Monday through Thursday, 8:30 am - 12:00 noon and 1:00 pm - 4:00 pm. Pacific time.

Friday, 8:30 am - 12:00 noon. Pacific time.

E-mail

Support questions may be addressed to cos550@aol.com

Fax



You may fax any customer support questions to: 310-886-3517.

Tradenames

Acknowledgments

Adobe Acrobat and Adobe PDF are tradenames of Adobe Systems.
Windows 95 and Windows NT are trademarks of Microsoft, Inc.

Acknowledgments

Team Cosmi, the only fully integrated software developer and publisher in the budget software industry, wishes to give special thanks to Team Cosmi members who made special contributions to this program:

Executive producer and programmer: Herb Kraft
Screensaver producer: Amy Seeberger
Additional programming: Bob Truxal
Art: Susan Randle
Marketing: Ray Allen, Randy Jick, Beverly Johnson

Copyright Notices

All Holiday Clipart + is © 1997 Cosmi Corporation.

A portion of the images and software provided courtesy GraphicCorp. All Rights Reserved.

A portion of the images © 1996-1997 IA Users Club, Inc., d/b/a Graphic Corp. All Rights Reserved.

A portion of the images © 1996-1997 The Gifted Line. From the John Grossman Collection of Antique Images. All Rights Reserved. The images contained herein may not be included in any commercial product intended for manufacture, or for distribution or sale to the general public.

Glossary of Terms

video drivers

Video cards are hardware that control your display. Video drivers are the software which run your graphic cards. Many video cards can operate different software drivers. In some cases, non-standard drivers can refuse to operate with some programs. In general, standard drivers are compatible with most programs.

DISPLAY

Like cars, different computers have different levels of equipment. Some cars have 4 cylinders, other 6, 8 or more. Computers have different capabilities to show graphics or to show different colors. Many computers can show a higher quality of video than what they were set on by their manufacturer. In both Windows 3.1 and Windows 95, the "Control Panel" has video settings, and in many cases, people can select more colors than those currently displayed.

video card

A part of your computer which is used to process the graphics on your screen. Your video card may support 16, 256 or other color palletes and modes. Different computers which can all run Windows have different video cards, and the differences in video cards affect the speed and quality of the display.

PAGE SETUP

A command which is available in most word processors and printing dialogs to set the size of paper (8.5" by 11", A4 or other size) and the orientation of the printing (portrait or landscape.)

root folder

Also known as the root subdirectory.

WORDPAD

A word processing program included with Windows 95 by Microsoft that can display RTF documents.

palette

Selection of colors. As used in computers, the colors that your system is configured to show.

landscape

A page which is printed or shown so the longest side is the top. Opposite of portrait. (Similar to letterbox movie format.)

portrait

A page which is longer than it is wide. Standard 8.5" by 11" size office paper is usually printed in portait mode. The name comes from the fact that in fine art, portraits are usually painted on paper which is hung so that the widest part hangs up and down.

RTF

Rich Text Format. This is a format which is readable by almost all Windows word processing programs including Microsoft Word, Microsoft Works, Corel Word Perfect and Wordpad, which is included with Windows 95. In addition, the Recipe printing program processes RTF files.