



# GT Icon Extract v2.0

## Introduction

[What Is GT Icon Extract v2.0](#)

[Copyright and Disclaimer of Liability](#)

[Installation](#)

[Bugs](#)

## Procedures

[Choosing an Extract Directory](#)

[Extracting An Icon](#)

[Selecting Files to Extract](#)

[Setting Options](#)

## Tool Buttons



[About Button](#)



[Setup Button](#)



[Extract Button](#)



[Exit Button](#)

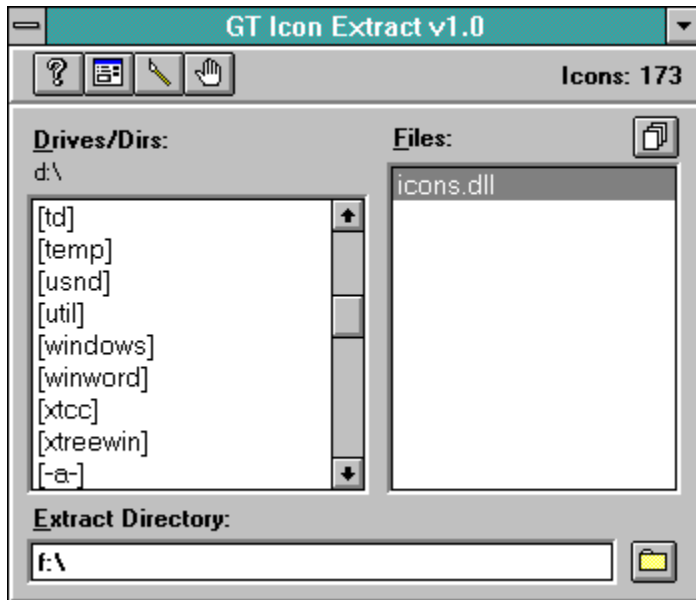


[Browse Button](#)



[Select All Button](#)

## What Is GT Icon Extract v2.0



**GT Icon Extract v2.0** is a utility that will extract icons from Windows executable (.EXE) files and Windows dynamic link library (.DLL) files. This utility is brought to you for free. However, I have not been known to refuse money.

## Copyright and Disclaimer of Liabilities

**GT Icon Extract v2.0** is the copyright of George Rallos Torralba. Portions of the software is the copyright of **Microsoft** Corporation.

The author George Rallos Torralba will not be responsible for damages, direct or consequential, from the use of this software. If you use this software, you are hereby bound by the aforementioned disclaimer. Use it at your own risk.

If you find bugs, which is highly likely, or just want to make comments or suggestions, please feel free to contact the author at:

Email: [grtorlba@seattleu.edu](mailto:grtorlba@seattleu.edu) (preferred)  
US Mail: George R. Torralba  
8728 Phinney Avenue N #8  
Seattle, WA 98103  
(206) 781-7622

# Installation

## Distribution Files:

ICO_EX20.EXE	The main executable. You can put this file in any directory you wish.
ICO_EX20.HLP	The help file. You must put this file in the same directory as ICO_EX11.EXE
ICO_DLL.DLL	This file contains components used in the program. You must put this file in the same directory as ICO_EX11.EXE
CTL3D.DLL	Dynamic link library used in the program. Place this file in your \windows\system directory. <b>Please check to make sure you dont have a file of the same name in your \windows\system directory. If you do, check its date and make sure its not newer than the file in this distribution. Either way, its a good idea to make a backup of that file before copying over it.</b>
THREED.VBX	The same installation note as CTL3D.DLL
GTTBAR.VBX	Either goes with ICO_EX20.EXE or the same directory as CTL3D.DLL

## File Not Included But Required:

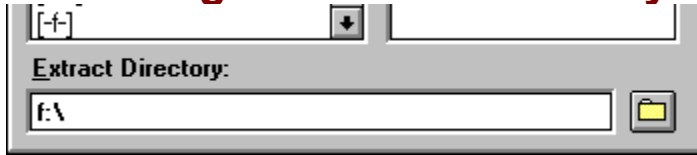
VBRUN300.DLL	Although this file is needed to run the program, it is not included in the package to reduce its size. If you dont have this file in your system (check your ~\windows or ~\windows\system directory) you can download it from the site where you acquired this program. If not, write the author and he'll be happy to send a copy.
--------------	--



## Bugs Zapped!

08/04/93    Removed function that needed another 31K dynamic link library and which was accidentally left off from version 1.0 causing a nasty File Not Found message.

## Choosing an Extract Directory



Before extracting icons, please make sure that you have chosen a directory to which the icons will be extracted. Also make sure that you have enough disk space for the extracted icons in that directory.

Enter the path in the text box as pictured below. You can also use the directory browser by clicking on the Browse button.

**See Also:** [Setting Options](#)

## Extracting An Icon



Extract Button

Click on the Extract button in the Toolbar to extract the file or files selected/highlighted in the filelist box. If the filelist box is empty or there are no files selected, the Extract button will be disabled.

**See Also:** [Selecting Files to Extract](#)  
[Setting Options](#)

## Selecting Files to Extract

### Selecting a Non-Contiguous Range of Files:

To select a non-contiguous range of files, hold down the the Control key on your keyboard while clicking on the files you want to include in the range.

### Selecting a Contiguous Range of Files:

- Hold the left mouse button down and drag across your selection.
- Or**
- Select the first item in the range.
  - Move down to the last item of the range you want to include.
  - Hold down the Shift key on your keyboard and click on the last item to include in the range.

### Selecting all files:

Click on the SelectAll button or use either method described in **Selecting a Contiguous Range of Files** above.

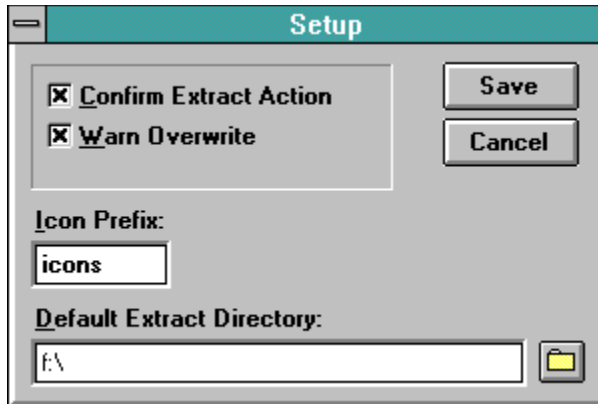


# Setting Options



## Setup Button

Click on the Setup button to bring up the Setup dialog.



### Confirm Extract Action

If this box is checked, you will be asked to confirm extraction. This is done each time you click on the Extract button and not for each file selected.

### Warn Overwrite

If a file is encountered with the same filename given to the current icon about to be extracted, you will be presented a dialog box to choose an appropriate action.

### Icon Prefix

This prefix will be appended a unique number and will be used as the filename for extracted icon(s). If this is left blank, **GT Icon Extract v2.0** will use the first five letters of the source file as the prefix.

### Default Extract Directory

This will be the extract directory used each time you start **GT Icon Extract v2.0**. The extract directory entry on the main screen overrides this one. To facilitate the directory selection, click on the Browse button.



The Browse button brings up a dialog box to facilitate directory selection.



The Select All button allows you to select all the files currently listed in the filelist box.



If a function assigned to a button is not available, the button will be grayed to give a cue of the state of the button, and hence, the availability of the function.

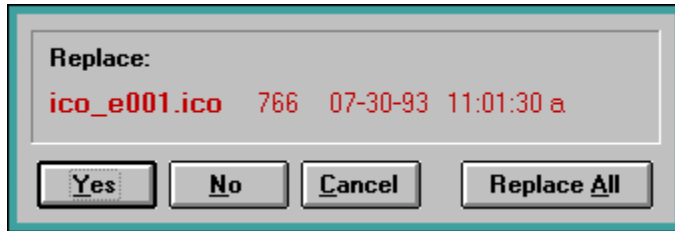


If a function assigned to a button is not available, the button will be grayed to give a cue of the state of the button, and hence, the availability of the function.



Click on the Extract button to start extracting icons from the selected file(s).

## Replace Dialog



**Choose:**            **To:** \_\_\_\_\_

- |             |   |
|-------------|---|
| Yes         | To replace the current file indicated.  |
| No          | To let <b>GT Icon Extract v2.0</b> pick a unique name for the icon currently extracted. The filename will compose of a ~ character followed by the first three letters of the prefix in context, and finally, a unique random number. |
| Cancel      | To terminated the Extract operation.  |
| Replace All | To replace the current file and all subsequent files having the same filename as the extracted icon. Choosing this option, in essence, disables the Warn Overwrite for the current extract operation.                                 |

**Setup Button**

Brings up the Setup dialog box.



## **About Button**

Brings up a dialog box about **GT Icon Extract v2.0**.

**Extract Button**

Extracts icon(s) from the selected file(s).

**Exit Button**

Exits GT Icon Extract v2.0.

**Browse Button**

Brings up the directory list dialog.

**Select All Button**

Selects all the files in the File List box.

