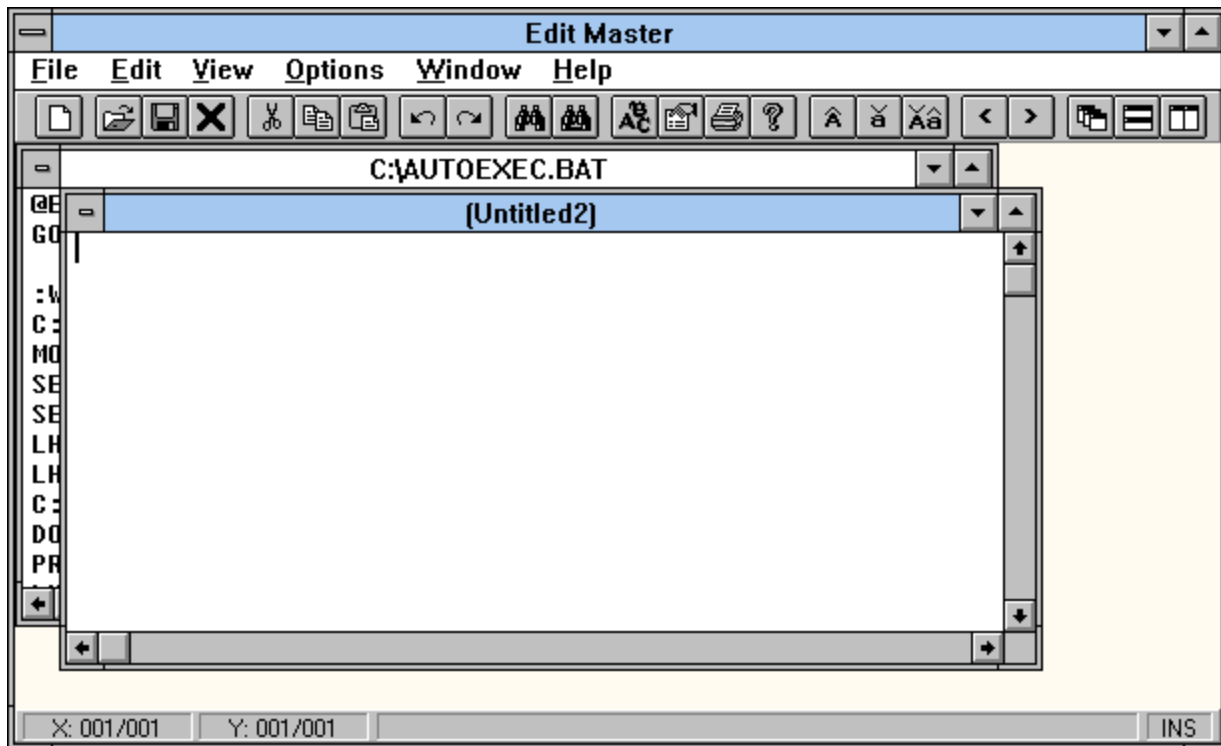




Edit Master Help Contents



Click on the part of the screen you would like help on.

[Registration](#)

[EDITMSTR.INI File](#)

[Common Problems](#)



File Menu

New	Opens a new window.
Open	Brings up a dialog box to open a new text file. You can select multiple files from this dialog box to open all at once by using the control key while clicking the mouse button.
Close	Closes the currently selected window.
Save	Saves the current text file.
Save As	Saves the current text file under a new name.
Insert File	Brings up a dialog box to insert the text of another text file at the current position.
Frequent Files	Brings up the frequent file list where you can edit the list or double click on a frequent file to load it into Edit Master.
Delete	Deletes the current file from disk and closes the window.
Print	Prints the current text file.
Recent File List	Lists the 9 most recent files used for easier retrieval.
Exit	Exits Edit Master.



Edit Menu

Undo	Undoes the previous change to the active text file. There is a buffer of 255 changes that are remembered.
Redo	Redoes the previously undone change to the active text file.
Cut	Cuts the selected text into the clipboard.
Copy	Copies the selected text into the clipboard.
Paste	Pastes the text on the clipboard into the selected area.
Paste to New File	Opens a new window and pastes the text from the clipboard into it.
Paste ASCII Value	Prompts the user for an ASCII value to insert at the selected position.
Delete	Deletes the selected text.
Find	Finds an occurrence text within the currently selected item.
Find Next	Finds the next occurrence of text within the currently selected item.
Replace	Replaces all occurrences of one string with another in the currently selected item.
Select All	Selects all text in the current text file.
Time/Date	Inserts the current time and date into the active text file.
Goto Line	Jumps to the given line number in the active editor.
Trim	Trims spaces from the L eft, R ight, or B oth sides of the selected text.
Convert Case	Converts the selected text to all upper or lower case letters or switches the case of all selected letters.
Shift Text	Shifts the selected text to the left or right by removing or adding one leading space or tab from each selected line.
UNIX Convert	Converts the selected text from the UNIX format so that the carriage returns are in the right places.
ROT13 Encode	Shifts all characters (A..Z and a..z) by 13 ASCII places. This is used by people to conceal potentially offensive text.
Invert	Inverts all ASCII characters where character 0 becomes character 255 and 1 becomes 254 and so on. This can be used as a simplistic encryption.



View Menu

- Tool Bar** Makes the tool bar visible or invisible.
- Status Bar** Makes the status bar visible or invisible.
- Font** Changes the font for all windows. This information is saved in the EDITMSTR.INI file.
- Printing Font** Changes the font for printing. This information is saved in the EDITMSTR.INI file.
- Set Bookmark** Sets a bookmark at the current location in the current file.
- Goto Bookmark** Moves the cursor to the file and location of the previously set bookmark.
- Grep** Prompts the user for a string. Then it opens a new window displaying all lines from the text file that contain that string.



Options Menu

Options	Brings up the <u>Options Screen</u> .
Print Options	Brings up the <u>Print Options Screen</u> .
Customize Tool Bar	Allows the user to customize the tool bar.
Word Wrap	Wraps the whole file based on the current window's width.
Perm Word Wrap	Prompts for a character width to wrap the selected text (or whole file if no text is selected).
Auto Indent	Makes all new lines indent like the previous one.
Drag Drop	Enables/Disables drag-and-drop moving and copying in the current window. When enabled a selected block can be moved by dragging it to a new location. If the control key is held down during the drag, the block will be copied.
Unix Save	Option so that when the file is saved it is saved in UNIX format. This is automatically set if the file opened is in UNIX format.
Selection Mode	Sets the selection mode the current file. None: No selection Normal: stream selection (default) Line: whole lines are selected at once Column: columns are selected - this is a great feature



Window Menu

Cascade	Cascades the open windows.
Tile Horizontal	Tiles the open windows horizontally.
Tile Vertical	Tiles the open windows vertically.
Arrange Icons	Arranges the iconized windows.
Close All	Closes all open text windows prompting for save if needed.
Save All	Saves all open text windows.
Window List	Keeps a list of the current windows to select from.



Help Menu

- Contents** Brings up the help file.
- About** Brings up the about screen.
- Register** Brings up the Registration window. (not visible in registered version)



Text Window

This window displays the current text file for viewing and editing. Text in this window can be edited and then saved with the command from the File menu if it was not loaded read-only.

When the right mouse button is clicked on the text area, a menu of editing commands pops up based on the selection. See [Edit Menu](#).

Text can be easily moved by selecting it and dragging it to a new position. If the control key is held down during the drag-drop, the text will be copied to the new position.

A new window can be created by selecting New from the File menu.

This window will open a file if it is dropped from the file manager



Initialization File: EDITMSTR.INI

When you change any options on the options screen, they are saved to the EDITMSTR.INI in your Edit Master directory.

The EDITMSTR.INI flag is an ASCII text file, which should not be edited since values read from this file are not validated. If an item is deleted from the file, MultEdit will replace it with a default value.

The following information is saved to the EDITMSTR.INI file:

Edit Master:

AutoIndent: Makes all new lines indent like the previous one.

DefaultEditor: Tells if Edit Master is set as the default Windows editor. This should only be changed via the Options Screen.

Dialog Filter: Tells Edit Master what selections to put in the file dialog boxes. Do not change this unless you know what you are doing. If you mess it up, delete the line and Edit Master will replace it with a default.

DragDrop: Enables text drag-and-drop of selected text with the mouse.

KeepUnixFormat: Sets the Unix Save Option whenever a unix file is opened.

MarginWidth: Specifies the width (in pixels) of the margin for all text windows.

Maximized Child: Tells if the startup code window is maximized.

PrintFileName: Prints the file name at the top of the printed document.

SelectType: Selection type for all editing windows:

0 - None

1 - Stream selection (default)

2 - Line selection (whole lines are selected at once)

3 - Column selection

ShowPercentage: Tells if the percentage bar should be displayed on long functions.

StatusBar: Shows the status bar at the bottom of the screen.

TabWidth: Specifies the width (in characters) of the tabs for all text windows.

ToolBar: Tells Edit Master whether to display the tool bar or not.

ToolBarTips: Displays tool bar tips when a button is clicked.

WordWrap: Makes all new windows have word wrap on (-1) or off (0) by default.

Font and Printing Font:

Details about the default font used for all Edit Master windows and printing.

Print Options:

Details about the options all Edit Master printing.

Margins: Margin widths in inches.

PrintFileName: Tells Edit Master whether or not to print the file name at the top of the first page.

ToolBar: Tells Edit Master whether or not to print the date at the top of the first page.

Window:

Position of the Edit Master windows at startup. This is saved every time you exit.

Registration:

Encrypted information that tells the program if you are registered. Do not change these entries as it will render your program unregistered. Use the Registration

screen to enter this data. If you want to re-enter your registration information, delete this section.

Recent Files:

This is where Edit Master keeps a list of recently used files. Every time a file is opened or saved, it is put at position 1.

Frequent Files:

Records the file information for the Frequent Files screen.

Tool Bar:

Records the visual setup of the tool bar.



Registration

Edit Master for Windows is distributed as "shareware." It is not free software. You are being given a chance to use this program for a period of thirty (30) days before buying it. If after this time you continue to use Edit Master, you are expected to register it. Registration gives you the right to continue to use this software as well as news and discounts on future upgrades. You are encouraged to distribute this software, providing it is distributed in its entirety and without charge (except for media and handling, if applicable). I reserve the right to change these restrictions in future versions.

If you find this product useful and continue to use Edit Master after thirty days, you are required to register it by making a payment of \$15 (US) to Princeton Computer Consulting. Include an additional \$5 (US) if you would like the most recent version mailed to you. This fee will license one copy of Edit Master for use on any one computer at any one time. To register Edit Master, print out the form called REGISTER.WRI using Windows Write and send with your payment to:

Princeton Computer Consulting, Inc.
16 Pennington-Hopewell Road
Pennington, NJ 08534-3612

You may also contact me (Brad Murray) by E-Mail at pcci@pluto.njcc.com. I would like to hear suggestions for updates as well as overall comments.



Options Screen

Allows you to change options for the program.

- Make Default Editor** Makes Edit Master the default editor for Windows. This will change your registration database so that all extensions associated as text files will run under Edit Master when they are double clicked on.
- Max Child Window** Tells the program to maximize the active text window at the start of the program.
- Print File Name** Tells the program to put the file name on top of the first page when printed.
- Tool Bar Tips** Tells the program to print a description of each tool bar when it is clicked on with either mouse button.
- Word Wrap** Tells the program to put word wrap on or off on all new windows.
- Tab Width** Sets the width (in characters) for each tab stop. Must be between 1 and 9.
- Margin Width** Sets the width (in pixels) of the left margin. Must be between 0 and 9.
- Selection Mode** Sets the default selection mode for all editors.
None
Normal: stream selection (default)
Line: whole lines are selected at once
Column
- File Dialog Filters** Shows a list of all file types displayed in the file dialog boxes. You may add, delete, or edit the types, but they must be formatted correctly.



Print Options Screen

Allows you to change printing options for the program.

Left/Right/Top/Bottom Sets the margins on the printed page in inches.

Print File Name in Header Prints the name of the file (with path) on the top of the first printed page.

Print Current Date Prints the current date (format defined in country settings) on the top of the first printed page.



Customize Tool Bar Screen

Allows you to customize the tool bar by specifying which buttons you want on the tool bar and in what order.

You can add a new tool bar item to the end of the list on the left by double clicking the desired item in the list on the right. You can also insert a new item by selecting the desired item in the right list and selecting the item you would like it to precede in the left list and the clicking on the button with the < sign.

You can remove a selected tool bar item by double click on it in the left list or by clicking on it and clicking the button with the > sign.

The icon for the selector

Text Window

This window displays the current text file. Text in this window can be edited and then saved with the command from the File menu.

When the right mouse button is clicked on the text area, a menu of editing commands pops up based on the selection.

A new window can be created by selecting New from the File menu.

Shift Left/Right

- < Shifts the selected text to the left by removing one leading space from each line.
- > Shifts the selected text to the right by adding one leading space to each line.

Convert Case

A Converts the selected text to all upper case letters.

a Converts the selected text to all lower case letters.

Aa Switches the case of all selected letters.

New

Opens a new window.

Open

Brings up a dialog box to open a new text file.

Save

Saves the current text file.

Delete

Deletes the current file from disk and closes the window.

Cut

Cuts the selected text into the clipboard.

Copy

Copies the selected text into the clipboard.

Paste

Pastes the text on the clipboard into the selected area.

Undo

Undoes the previous change to the active text file. There is a buffer of 255 changes that are remembered.

Redo

Redoes the previously undone change to the active text file.

Font

Changes the font for all windows and printing. This information is saved in the EDITMSTR.INI file.

Options

Brings up the options screen.

Print

Prints the current text file.

Help

Brings up the help file.

Find

Finds an occurrence text within the currently selected item.

Replace

Replaces all occurrences of one string with another in the currently selected item.

Status Bar

Tells you where you are in the text file as [X position]/[length of line] and [Y position]/[Number of lines]. Contains a meter for displaying the progress of long actions. The right-most part shows whether the current text file is in INS - insert or OVR - overwrite mode.

Window Functions

Cascade Cascades the open windows.

Tile Horizontal Tiles the open windows horizontally.

Tile Vertical Tiles the open windows vertically.

File Location Pointer

Shows the location of the cursor on the current line and the location of the current line.

Status Bar

Shows tool bar tips if they are turned on. On long operations, this shows a percentage bar indicating the progress of the function.

Insert/Overwrite Indicator

Shows whether the current file is in insert (INS) or overwrite (OVR) mode.



Common Problems

Invalid Property Value Error: A font that is set in the EDITMSTR.INI file is not on your system. Edit the file and change the font name to one that is on your system.

Edit Master locks up when you double click on a file from the File Manager: You should use the Make Default Editor option from the Options Screen. This will make an entry in your registration database for Edit Master as you text editor. Then to associate files with Edit Master, pick File Associate from the File Manager and associate your file types with Text File from the list box on the File Associate screen.

Other Problems: Contact me (Brad Murray) at pcci@pluto.njcc.com.

