

# Memory Tools 2.1



## CPU Monitor

Introduction:

[What is CPU Monitor?](#)

[About Memory Tools 2.1](#)

[Why Register???](#)

Monitoring:

[Start/Stop Monitoring Buttons](#)

[Calibration](#)

[Changing the Interval](#)

[The OVERLOAD! Feature](#)

Graphing:

[Displaying a Graph](#)

[Changing a Graphs Settings](#)

[Copying a Graph to the Clipboard](#)

[Saving a Graph](#)

Miscellaneous:

[Always on Top](#)

## What is CPU Monitor?

CPU Monitor is a powerful utility that allows you to accurately measure your systems CPU Usage. It can perform numerous functions not usually available in other monitoring programs such as:

- An OVERLOAD! feature which warns you when your CPU Usage becomes dangerously high
  - Resizable graphs with many user-definable Options
  - The ability to make certain forms on top of everything else in windows
  - A small bar graph in the minimized icon
  - Once calibrated you never have to recalibrate
  - and much, much, more...
- 
- PLUS... every user-definable option is saved upon exiting. Your personal modifications will always be there!

Abbreviation for Central Processing Unit. This is the brain inside your computer. It is often referred to as the processor.

## Start/Stop Monitoring Buttons

The Start and Stop Monitoring buttons are self-explanatory. They Start and Stop the monitoring process!

The section on the main form below indicates the status of CPU Monitor.



A dark bulb symbolizes Not Calibrated or Not Monitoring. A lit bulb symbolizes that CPU Monitor is Calibrated or is currently Monitoring.

## Calibration

Calibration is the process by which CPU Monitor determines the maximum number of operations your computer can complete in a set amount of time. This generally takes a few moments. Once calibrated you should never have to recalibrate as this information is saved. If you change computers/processors or change Windows internal setup you may want to recalibrate CPU Monitor.

To do so, click on the button entitled:  and follow the instructions.

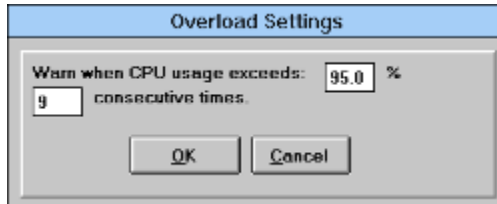
## Changing the Interval

To change the interval (how often CPU Monitor samples your system) go to the **Options** menu and select **Change Interval...**

Enter the new interval in seconds. The interval you specify can range from 0.5 seconds to 60 (You may use decimals).

## The OVERLOAD! Feature


The OVERLOAD! feature is one of CPU Monitors best. By default CPU Monitor will warn when your CPU Usage exceeds 98%, on 9 or more consecutive samples. You can change every attribute of the Overload feature. By going to the **Options** menu and selecting **Set Overload** the following self-explanatory dialog box will appear:



The following bar is displayed above the blue percentage gauge.



The white portion indicates safe CPU Usage levels; the red portion - the dangerous levels. When you change the Overload settings the bar automatically resizes to the new setup.

If CPU Monitor detects an overload click on:  for information on how to lower your CPUs usage.

You can enable and disable the Overload feature by checking or unchecking **Warn if Overload** in the **Options** menu.

## Displaying a Graph

To display a graph of your CPUs Usage go to the **Options** menu and select **Graph CPU Usage**. The graph can be resized to fit in any nick or cranny on your desktop. When the graph is resized it will automatically adjust.

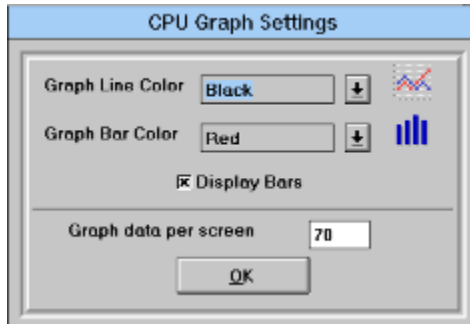
All the data to be plotted on a graph is stored temporarily in memory. Because of this you do not need to worry about losing your graph data when you close a graph. However, CPU Monitor can only keep track of the last 700 samples it took.

You can switch back to CPU Monitor by selecting **Switch to Main Form** from the **Options** menu of any graph.



## Changing a Graphs Settings

The CPU Usage Graph has many options. Select **Graph Settings...** from the **Options** Menu of to bring up the following dialog box:



Graph Line Color is the color of the top line of the graph.

Graph Bar Color is the color of the bars below the top line.

Graph data per screen defines the number of samples to plot on the screen.

Select or Deselect the Display Bars checkbox to enable or disable the bars below the top line.

You can use to the scroll bar at the bottom of the graph to scroll forward and backward.

## Copying a Graph to the Clipboard

You can copy a graph to the clipboard by selecting **Copy Graph to Clipboard** from the **Options** menu. Once in the clipboard, it can be pasted into any other document.

## Saving a Graph

You can save a graph in .grf format by selecting **Save Graph** from the **Options** menu. This format is only supported by Graph Viewer, a utility available in the Registered Version of Memory Tools 2.1.

[Why Register???](#)

## REGISTRATION

At Ross Co. we believe that **registration fees should NOT be a multi-million dollar deal!**  
We MAXIMIZE what you get and minimize what you \$\$\$pay\$\$\$ to register Memory Tools 2.1...



Just a click away...

When you register Memory Tools 2.1 you will receive:

1. Graph Viewer, a powerful editing utility which can read the graphs you save from System Resource Monitor and CPU Monitor. Its features include:

- MDI interface
- Conversion to multiple graph types
- Full dynamic resizing
- Saving in .bmp and .wmf file formats
- Printing capabilities
- The editing features you'll find in Paintbrush
- Selectable brush sizes and colors

2. Super-Sense, a utility to carefully log Windows usage. It can record the opening of any window, whether it be an application or a Save As dialog box. With this ability you can create logs of your systems usage and incorporate them into your graphs.

3. ENHANCED VERSIONS of System Resource Monitor and CPU Monitor.

To register please send,

1. A mere \$9 U.S. (foreign orders - the nearest equivalent to \$15 U.S.) check or cash
2. Your Name
3. Your Address
4. Diskette Preference (3 1/2 or 5 1/4)

to:

<p>Ross Co. Memory Tools P.O. Box 299 Vienna, VA 22183 U.S.A</p>	
--	---

[About Memory Tools 2.1](#)

MDI stands for Multiple Document Interface

## Always on Top

Every form in the Memory Tools 2.1 series has the ability to be always visible in Windows. To enable or disable this feature, check or uncheck **Always on Top** from the **Options** menu of any form.

By holding the right-mouse button down on any graph, you can what lies below it.

# About Memory Tools 2.1



Just a click away...

We welcome any questions/complaints/ideas that you have. We can be reached at the following address:

Ross Co.  
P.O. Box 299  
Vienna, VA 22183  
U.S.A

