

Memory Tools 2.1

System Resource Monitor

Introduction:

[What is System Resource Monitor?](#)

[About Memory Tools 2.1](#)

[Why Register???](#)

Monitoring:

[Start/Stop Monitoring Buttons](#)

[Changing the Interval](#)

[Setting System Resource Monitor to Warn You](#)
[Resource Tracker](#)

Graphing:

[Displaying a Graph](#)

[Changing a Graphs Settings](#)

[Copying a Graph to the Clipboard](#)

[Saving a Graph](#)

Miscellaneous:

[Always on Top](#)

[System Status](#)

What is System Resource Monitor?

Microsoft Windows has a deadly problem... a problem that can cause your applications to crash unexpectedly. These are known as the GDI and USER resource heaps which can run out of space even when you have several megabytes of free memory.

System Resource Monitor is a powerful utility that allows you to accurately measure your systems GDI and USER Resource Heaps in addition to your systems free memory. It can perform numerous functions not usually available in other monitoring programs such as:

- A Warning Feature which warns you when your GDI and USER Resource Heaps fill up leaving you crash prone.
 - Resizable graphs with many user-definable Options
 - The ability to make certain forms on top of everything else in windows
 - A small bar graph in the minimized icon
 - and much, much, more...
-
- PLUS... every user-definable option is saved upon exiting. Your personal modifications will always be there!

Start/Stop Monitoring Buttons

The Start and Stop Monitoring buttons are self explanatory. They start and stop the monitoring process!

The section on the main form below indicates the status of System Resource Monitor.



or



A red light symbolizes Not Monitoring; a green light symbolizes Monitoring.

Changing the Interval

To change the interval (how often System Resource Monitor samples your system) go to the **Options** menu and select **Change Interval...**

Enter the new interval in seconds. The interval you specify can range from 0.5 seconds to 60 (You may use decimals).

Setting System Resource Monitor to Warn You

The warning feature is one of System Resource Monitors best. By default System Resource Monitor will warn when either the GDI or USER Resource Heaps usage exceeds 80% or when the free memory drops below 1500 K.

You can change every attribute of the Warning feature.

By going to the **Warning Settings** menu and selecting **GDI**, **USER**, or **Free Memory** the following self-explanatory dialog box will appear:



The following bar is displayed above every percentage gauge.



The white portion indicates safe levels; the red portion - the dangerous levels when you are crash prone.

When you change the Warning settings the bar automatically resizes to the new setup.

Resource Tracker

Resource Tracker allows you to measure the specific resource usage of an individual application. Resource Tracker can be displayed by selecting **Resource Tracker...** from CPU Monitor's **Options** menu.

Resource Tracker will first display the current GDI and USER resource heap usage levels, and your systems free memory. This information will appear in a section entitled Before.

Once the Resource Tracker Window is visible, launch the application to evaluate. When it is opened, click on the Evaluate button.

Resource Tracker will then display the new GDI and USER resource heap usage levels, and your systems free memory in a section entitled After.

The specific usage levels of the Application you ran, are displayed in the last section entitled Application Usage.

Displaying a Graph

To display a graph of your GDI, USER, or Free Memory go to the **Graph** menu of and select either

GDI Resources

USER Resources

Free Memory

All Information - to display GDI, USER, and Free Memory stats on a single graph.

All graphs can be resized to fit in any nick or cranny on your desktop. When the graphs are resized they will automatically adjust.

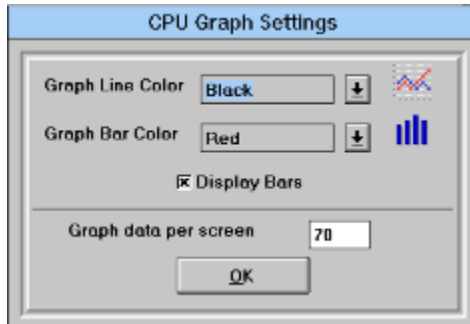
All the data to be plotted on a graph is stored temporarily in memory. Because of this you do not need to worry about losing your graph data when you close a graph. However, System Resource Monitor can only keep track of last 700 samples it took.

You can switch back to System Resource Monitor by selecting **Switch to Main Form** from the **Options** menu of any graph.

On the graph of all Information, there is a key indicating what each line represents. This key can be hidden and unhidden by checking or unchecking **Hide Key** in the graphs **Options** menu.

Changing a Graphs Settings

The Graphs have many options. Select **Graph Settings...** from the **Options** Menu of a Graph to bring up the following dialog box (or one like it for the graph all information):



Graph Line Color is the color of the top line of the graph.

Graph Bar Color is the color of the bars below the top line.

Graph data per screen defines the number of samples to plot on the screen.

Select or Deselect the Display Bars checkbox to enable or disable to bars below the top line.

You can use to the scroll bar at the bottom of the graph to scroll forward and backward.

Copying a Graph to the Clipboard

You can copy a graph to the clipboard by selecting **Copy Graph to Clipboard** from the **Options** menu of a Graph. Once in the clipboard, it can be pasted into any other document.

Saving a Graph

You can save a graph in .grf format by selecting **Save Graph** from the **Options** menu of a Graph. This format is only supported by Graph Viewer, a utility available in the Registered Version of Memory Tools 2.1.

[Why Register???](#)

REGISTRATION

At Ross Co. we believe that **registration fees should NOT be a multi-million dollar deal!**
We MAXIMIZE what you get and minimize what you \$\$\$pay\$\$\$ to register Memory Tools 2.1...



Just a click away...

When you register Memory Tools 2.1 you will receive:

1. Graph Viewer, a powerful editing utility which can read the graphs you save from System Resource Monitor and CPU Monitor. Its features include:


- MDI interface
- Conversion to multiple graph types
- Full dynamic resizing
- Saving in .bmp and .wmf file formats
- Printing capabilities
- The editing features you'll find in Paintbrush
- Selectable brush sizes and colors

2. Super-Sense, a utility to carefully log Windows usage. It can record the opening of any window, whether it be an application or a Save As dialog box. With this ability you can create logs of your systems usage and incorporate them into your graphs.

3. ENHANCED VERSIONS of System Resource Monitor and CPU Monitor.

To register please send,

1. A mere \$9 U.S. (foreign orders - the nearest equivalent to \$15 U.S.) check or cash
 2. Your name
 3. Your address
 4. Diskette Preference (3 1/2 or 5 1/4)
- to:

<p>Ross Co. Memory Tools P.O. Box 299 Vienna, VA 22183 U.S.A</p> 
--

[About Memory Tools 2.1](#)

MDI stands for Multiple Document Interface

Always on Top

Every form in the Memory Tools 2.1 series has the ability to be always visible in Windows. To use it select **Always on Top** from any **Options** menu.

By holding the right-mouse button down on any graph, you can what lies below it.

GDI RESOURCE HEAP

GDI is the abbreviation for graphics device interface. The GDI Resource Heap manages the graphical aspects of windows. This includes handles (references to an object) to device contexts, brushes, pens, regions and bitmaps.

In general, you can lower GDI usage by closing applications which have numerous toolbars and other graphically intensive characteristics. However, occasionally an application will misbehave and not relinquish the GDI resources it claimed.

Note: Do not confuse System Resources with GDI Resources. System Resources is just an indication of whichever is lower; the GDI or USER Resource Usage.

USER RESOURCE HEAP

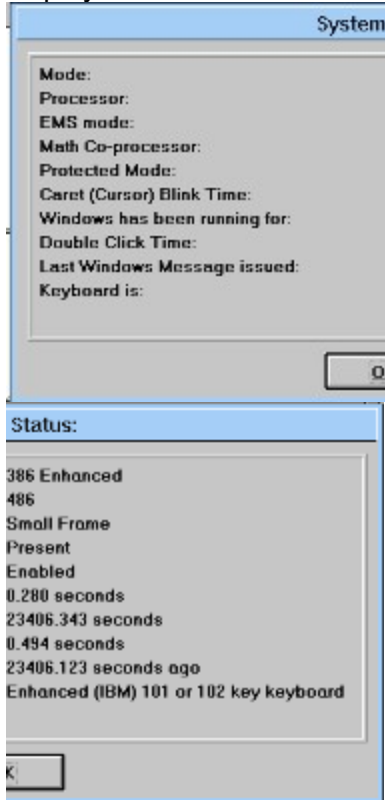
The User Resource Heap manages the handles (references to an object) to windows and menus.

In general, you can lower GDI usage by closing applications which have complex menus and many windows. However, occasionally an application will misbehave and not relinquish the USER resources it claimed.

Note: Do not confuse System Resources with USER Resources. System Resources is just an indication of whichever is lower; the GDI or USER Resource Usage.

System Status

For a brief listing of your systems setup, select **System Status...** from the **Options** menu. It will display information such as:



About Memory Tools 2.1



Just a click away...

We welcome any questions/complaints/ideas that you have. You can reach us at the following address:

Ross Co.
P.O. Box 299
Vienna, VA 22183
U.S.A

